

Flight Procedures Cover Page	Task Action: Cancellation	Task Type: IAP	Estimated Chart Date: 07/14/2022	APWS Task ID: 9884B2F51A254CEAAEBBB528F860009A	APWS Project ID: EDB2622251324767BC865A0D2C74FF18
Procedure: RNAV (GPS)-D AMDT 1		Enroute: NO	Specialist: Jackson, Frank		Agreement Number:
Airport ID: KEGE		Airport City: EAGLE		State: CO	
Facility ID:	Facility Type:	Flight Inspection Remark Type:			
<p>Procedure Comments: ACTIVE DATA USED.</p> <p>CONTACT: DON LANIER, AJV-A430 LEAD, 405.954.8242.</p>					



EAGLE, COLORADO

AL-6403 (FAA)

21224

APP CRS	Rwy Idg	N/A
251°	TDZE	N/A
	Apt Elev	6547

# RNAV (GPS)-D

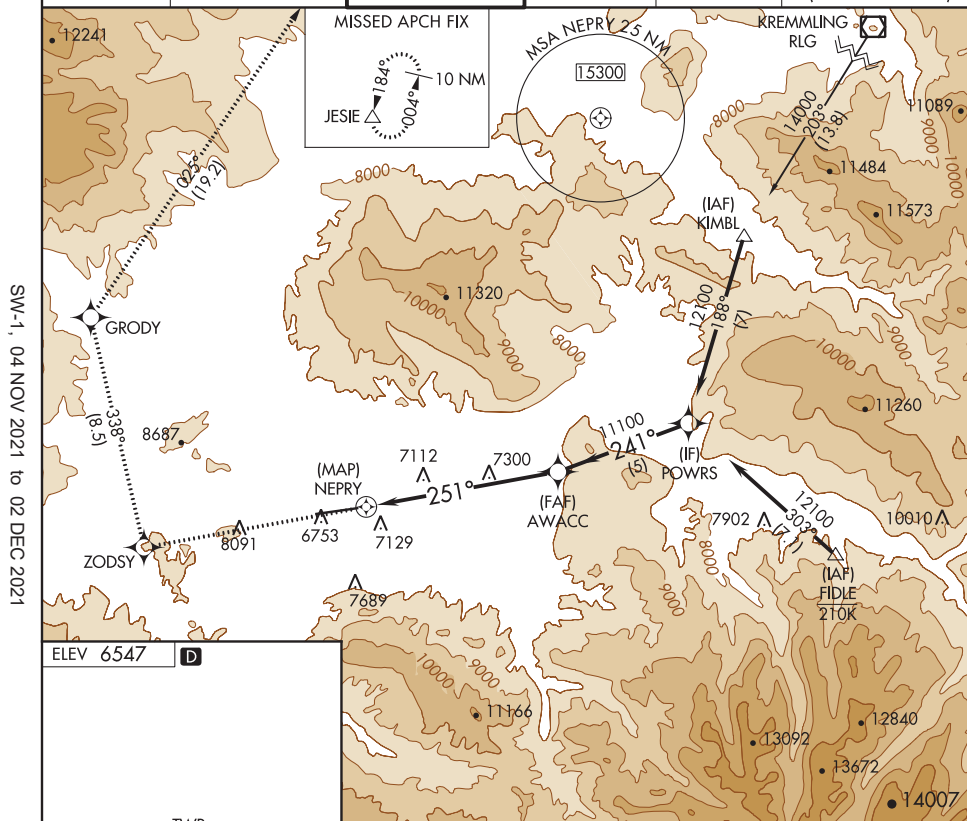
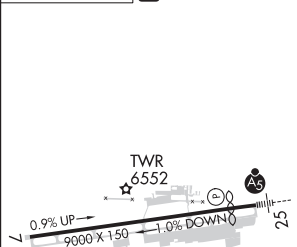
EAGLE COUNTY RGNL (EGE)

## RNP APCH.

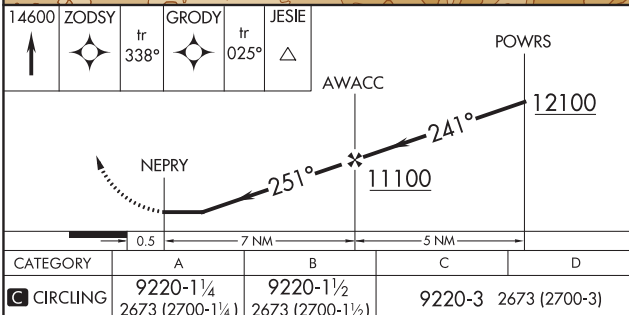
**⚠** Circling to Rwy 7 NA at night. Circling NA for Cats C and D south of Rwy 7-25. Rwy 7 helicopter visibility reduction below 1 SM NA. Rwy 25 helicopter visibility reduction below ¾ SM NA. Inoperative table does not apply.

**MISSED APPROACH:** (Do not exceed 185K until GRODY) Climb to 14600 direct ZODSY then on track 338° to GRODY and on track 025° to JESIE and hold, continue climb in-hold to 14600.

ATIS	DENVER CENTER	EAGLE TOWER ★	GND CON	CLNC DEL	DENVER CLNC DEL
135.575	128.65 282.2	119.8 (CTAF) 0	121.8	124.75	124.75 (When tower closed)

ELEV 6547 **D**

HIRL Rwy 7-25 **0**  
REIL Rwy 7 **0**



EAGLE, COLORADO  
Amdt 1 19JUL18

39°39'N-106°55'W

EAGLE COUNTY RGNL (EGE)  
RNAV (GPS)-D

SW-1, 04 NOV 2021 to 02 DEC 2021

SW-1, 04 NOV 2021 to 02 DEC 2021

**1. FLIGHT PROCEDURE IDENTIFICATION:**

Eagle County RGNL  
Eagle, CO  
RNAV (GPS)-D

**2. WAIVER REQUIRED AND APPLICABLE STANDARD:**

8260.58 PARA 1-2-5 c (2), Table 1-2-2 Minimum Speed of 250 KTS above 10000 feet.

**3. REASON FOR WAIVER (JUSTIFICATION FOR NONSTANDARD TREATMENT):**

210 KTS above 10000 feet is needed for the reduction of leg length and avoidance of terrain and man made obstacles.

**4. EQUIVALENT LEVEL OF SAFETY PROVIDED:**

1. 210 KTS will be coded in database.
2. 210 KTS will be depicted on the approach chart.

**5. ALTERNATIVE ACTIONS DEEMED NOT FEASIBLE:**

The increase in airspeed would require the climb gradient and termination altitude to be raised.

**6. COORDINATION WITH USER ORGANIZATIONS (SPECIFY):**

Flight Standards

**7. SUBMITTED BY:**

DATE	OFFICE IDENTIFICATION	TITLE	SIGNATURE
------	-----------------------	-------	-----------

**8. AFS ACTIONS:**

☐ APPROVED ☐ DISAPPROVED ☐ NOT REQUIRED

**COMMENTS:**

DATE	ROUTING SYMBOL	SIGNATURE
------	----------------	-----------