

| | | | | | |
|--|------------------------------|---|-------------------------------------|---|--|
| Flight Procedures Cover Page | Task Action: FLIGHT CHECK | Task Type: IAP | Estimated Chart Date: 04/22/2021 | APWS Task ID: 987B6D77B5FA436C9F42BFDE4B3D2843 | APWS Project ID: 00035F95DC9941B38DDDA3592DC5AE0D |
| Procedure: RNAV (GPS) RWY 35 AMDT 0B | | Enroute: NO | Specialist: Tuttle, Judith | | Agreement Number: |
| Airport ID: KMKN | | | Airport City: COMANCHE | | State: TX |
| Facility ID: | Facility Type: | Flight Inspection Remark Type: New FC Slot | | | |
| <p>Procedure Comments: PENDING DATA USED FOR KMKN AIRPORT.</p> <p>INCORPORATED NOTAMS 9/6709.</p> <p>CRC REMAINDER CHANGED FROM E2AB4270 TO A9D24671 .</p> <p>CONTACT JOHN BORDY 405-954-0980.</p> | | | | | |



COMANCHE, TEXAS

AL-10216 (FAA)

FIG

| | | |
|--|------------------------|---|
| WAAS CH 61136 W35A | APP CRS 353° | Rwy Idg TDZE 1384 Apt Elev 1387 |
|--|------------------------|---|

RNAV (GPS) RWY 35

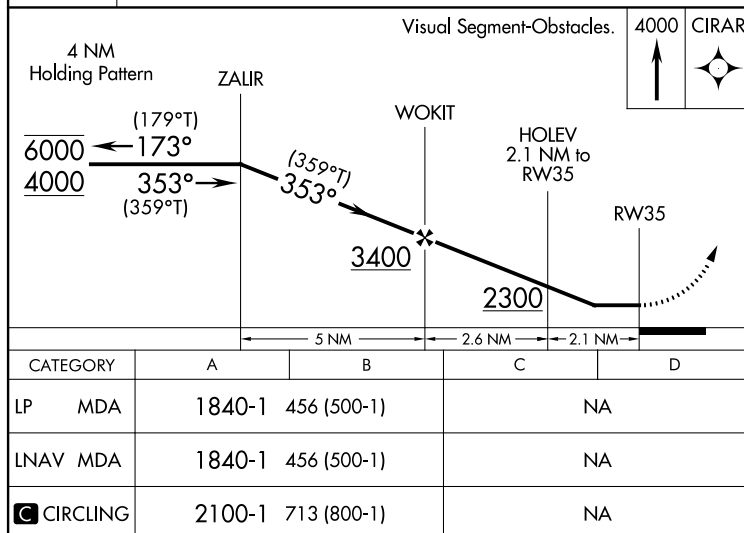
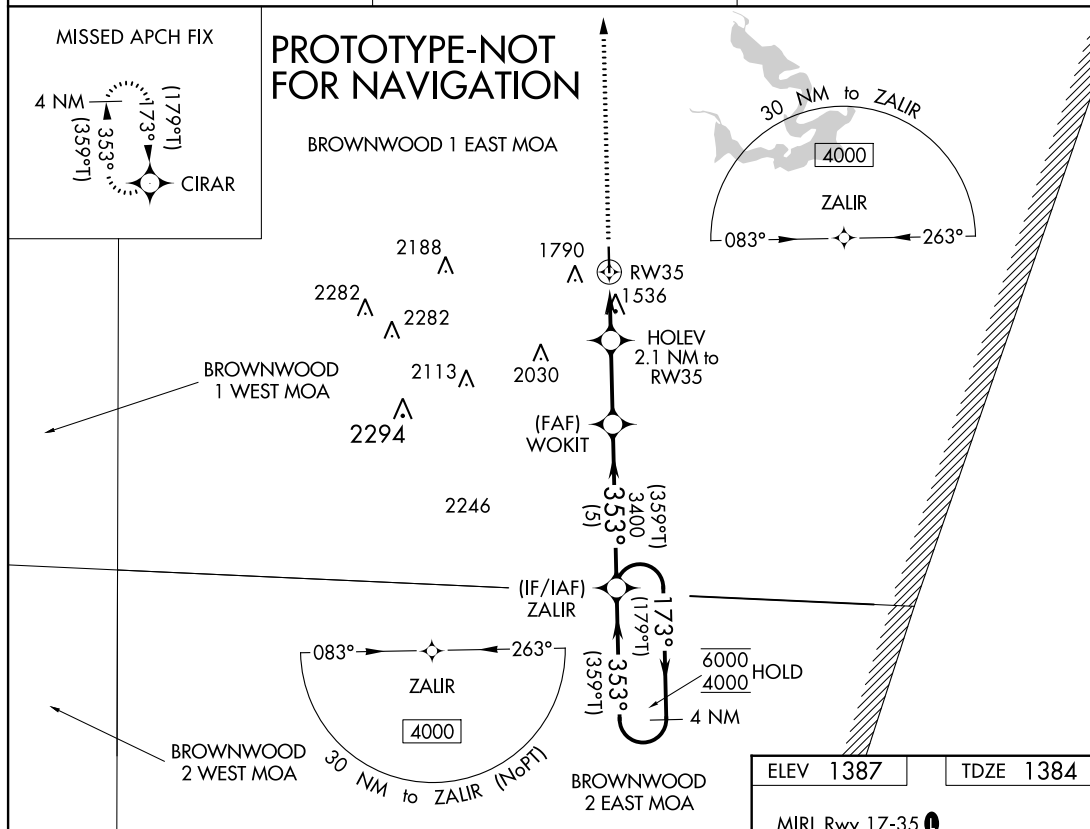
COMANCHE COUNTY-CITY (MKN)

RNP APCH.

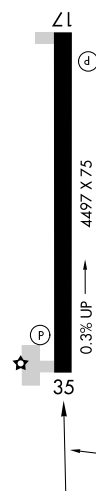
▼ Rwy 35 helicopter visibility reduction below 1 SM NA. Rwy 35 Straight-In and Circling minimums NA at night. When local altimeter setting not received, use Brownwood altimeter setting and increase all MDA 60 feet.

MISSED APPROACH: Climb to 4000 direct CIRAR and hold.

| | | |
|--------------------------|--|---------------------------------|
| AWOS-3 118.575 | FORT WORTH CENTER 127.15 314.0 | UNICOM 123.075 (CTAF) |
|--------------------------|--|---------------------------------|



MIRL Rwy 17-35



AUTOMATED AL-10216 RNAV (GPS) RWY 35

SC-3

1/25/2021

COMPILER: SQ

REVIEWER:

DBL CHKR:

EFF: FIG

COMANCHE, TEXAS

Orig-B FIG

31°55'N-98°36'W

COMANCHE COUNTY-CITY (MKN)

RNAV (GPS) RWY 35

COMANCHE, TEXAS

AL-10216 (FAA)

19115

| | | | |
|--|------------------------|-----------------------------|---|
| WAAS CH 61136 W35A | APP CRS 353° | Rwy Idg TDZE Apt Elev | 4497 1374 1387 |
|--|------------------------|-----------------------------|---|

OLD

RNAV (GPS) RWY 35 COMANCHE COUNTY-CITY (MKN)

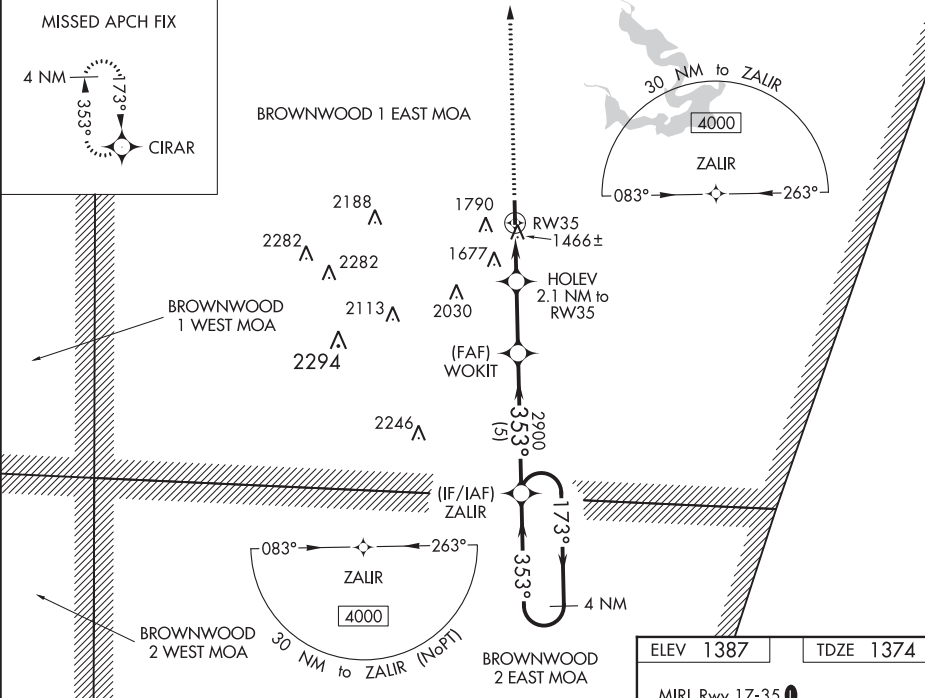
⚠ When local altimeter setting not received, use Brownwood altimeter setting and increase all MDA 60 feet. DME/DME RNP-0.3 NA. Rwy 35 Straight-In and Circling minimums NA at night. Helicopter visibility reduction below 1 SM NA.

MISSED APPROACH: Climb to 4000 direct CIRAR and hold.

AWOS-3
118.575

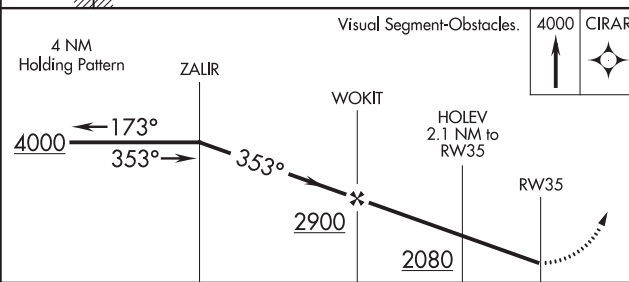
FORT WORTH CENTER
127.15 314.0

UNICOM
123.075 (CTAF)



SC-3, 23 APR 2020 to 21 MAY 2020

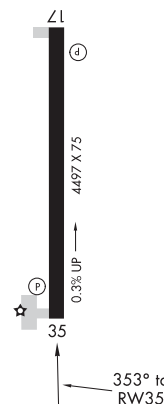
SC-3, 23 APR 2020 to 21 MAY 2020



| CATEGORY | A | B | C | D |
|-----------------|--------|-------------|----|----|
| LP MDA | 1720-1 | 346 (400-1) | NA | NA |
| LNAV MDA | 1800-1 | 426 (500-1) | NA | NA |
| CIRCLING | 2100-1 | 713 (800-1) | NA | NA |

ELEV 1387 TDZE 1374

MIRL Rwy 17-35



COMANCHE, TEXAS
 Orig-A 17AUG17

31°55'N-98°36'W

COMANCHE COUNTY-CITY (MKN)
RNAV (GPS) RWY 35

