

Flight Procedures Cover Page	Task Action: Amendment	Task Type: IAP	Estimated Chart Date: 09/08/2022	APWS Task ID: 984A102165DF4C97AB61BC36626189A4	APWS Project ID: E47B8E8A733C4B598F4D90AD7E04D47A
Procedure: ILS OR LOC RWY 28 AMDT 17A		Enroute: NO	Specialist: Garrity, Michael		Agreement Number:
Airport ID: KBWI			Airport City: BALTIMORE		State: MD
Facility ID:	Facility Type:	Flight Inspection Remark Type:			
<div>Procedure Comments:</div> <div>ACTIVE DATA USED FOR KBWI AIRPORT AND RUNWAYS</div> <div>ABBREVIATED AMENDMENT</div> <div>CLEAR !FDC 2/0151</div> <div>PROCESSED IAW TECHNICAL SUPPORT GROUP (AJF-17) MEMO DATED 07/07/2021 GUIDANCE FOR PROCEDURAL CHANGES REQUIRING FLIGHT INSPECTION/VALIDATION</div> <div>CONTACT: ALLAN WILL, TEAM 2 SUBTEAM-C MANAGER, 405.954.6103, OR MARLON ROBINSON, TEAM 2 MANAGER, 405.954.3636</div> <div><div>QUALITY 12 CHECKED</div><div>QUALITY 38 CHECKED</div></div>					

BALTIMORE, MARYLAND

AL-804 (FAA)

OLD

20310

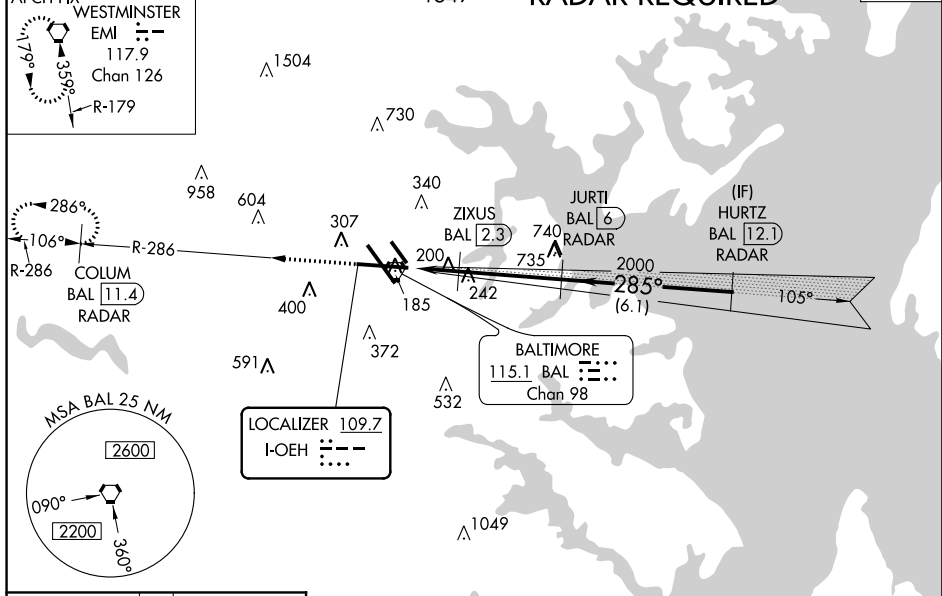
LOC I-0EH	APP CRS	Rwy Idg	9803
109.7	285°	TDZE	143
		Apt Elev	143

BALTIMORE/
WASHINGTON INTL THURGOOD MARSHALL (BWI)**ILS or LOC RWY 28**

▼ DME or radar required. For inoperative MALS, increase S-LOC 28 Cat C/D visibility to 1½ mile, and increase ZIXUS fix S-LOC 28 Cat C/D visibility to RVR 4500. ▲ **RVR 1800 authorized with the use of FD or AP or HUD to DA.	MALS 	MISSED APPROACH: Climb to 2500 on BAL VORTAC R-286 to COLUM/BAL 11.4 DME/RADAR and hold.
---	-----------------	---

D-ATIS 115.1 127.8	POTOMAC APP CON (020°-100°) 119.0 282.275 (101°-130°) 124.55 317.425	(131°-180°) 119.7 290.475 (181°-019°) 128.7 307.9	BALTIMORE TOWER 119.4 257.8	GND CON 121.9	CLNC DEL 118.05
------------------------------	--	--	--	--------------------------------	----------------------------------

ALTERNATE MISSED APCH FIX WESTMINSTER EMI 117.9 Chan 126 R-179	CPDLC
--	--------------



ELEV 143	D	TDZE 143	2500	COLUM BAL 11.4 RADAR	JURTI BAL 6 RADAR	HURTZ BAL 12.1 RADAR
TDZ/CL Rwy 10 and 33L REIL Rwy 15L and 33R HIRL all rwy				GS 3.00° TCH 55		
FAF to MAP 5.7 NM						
Knots	60	90	120	150	180	
Min:Sec	5:42	3:48	2:51	2:17	1:54	

BALTIMORE, MARYLAND

BALTIMORE/WASHINGTON INTL THURGOOD MARSHALL (BWI)

Amdt 17 04FEB16

39°11'N-76°40'W

ILS or LOC RWY 28

NE-3, 24 FEB 2022 to 24 MAR 2022