

<b>Flight Procedure Tracking Form</b>		<b>Action:</b> AMENDMENT	<b>Task Type:</b> IAP	<b>Date Open:</b> 03/21/2019	<b>Task #:</b> 2019032135035101001	<b>Request #:</b> 20190321350351
<b>Procedure:</b> RNAV (GPS) RWY 30 AMDT 2A			<b>Airport ID:</b> K9D9	<b>Airport:</b> HASTINGS		<b>Reimbursable #:</b> NO
<b>City:</b> HASTINGS	<b>ST:</b> MI	<b>GPS #:</b>	<b>Estimated Chart Date:</b> 01/30/2020		<b>FICO #:</b>	
<b>Fac ID:</b> N/A		<b>Fac. Type:</b>			<b>Specialist:</b> SHANE FOWLER	
<b>Procedure Review</b>						
	<b>Rec'd</b>	<b>Rel'd</b>	<b>Full Name</b>	<b>Comments</b>		
<b>Lead:</b>	08/05/2019					
<b>QA:</b>				SN 10/31/19 6		
<b>Liaison:</b>				CHECKED		
<b>Procedure Comments:</b>			ENROUTE-NON	<b>Remark Type:</b> INFORMATION		QUALITY 15
P-NOTAM.  PROCESSED IAW AIRCRAFT OPERATIONS GROUP (AJW-33) MEMO, OCTOBER 3, 2018, SUBJECT: FLIGHT INSPECTION REVIEW NOTREQUIRED.  CONTACT: ALLAN WILL 405-954-6103.						

WAAS CH <b>86326</b> <b>W30A</b>	APP CRS <b>309°</b>	Rwy Idg <b>4752</b> TDZE <b>800</b> Apt Elev <b>800</b>
--	------------------------	---

OLD

RNAV (GPS) RWY 30  
HASTINGS (9D9)

**V** Circling NA to Rwy 9, 18, 27 and 36. Baro-VNAV NA. DME/DME RNP-0.3 NA.  
**A** NA Use Grand Rapids altimeter setting; when not received, use Ionia altimeter setting:  
 increase LPV DA to 1123 feet; increase LNAV/VNAV DA to 1377 feet; increase  
 all MDA 20 feet.

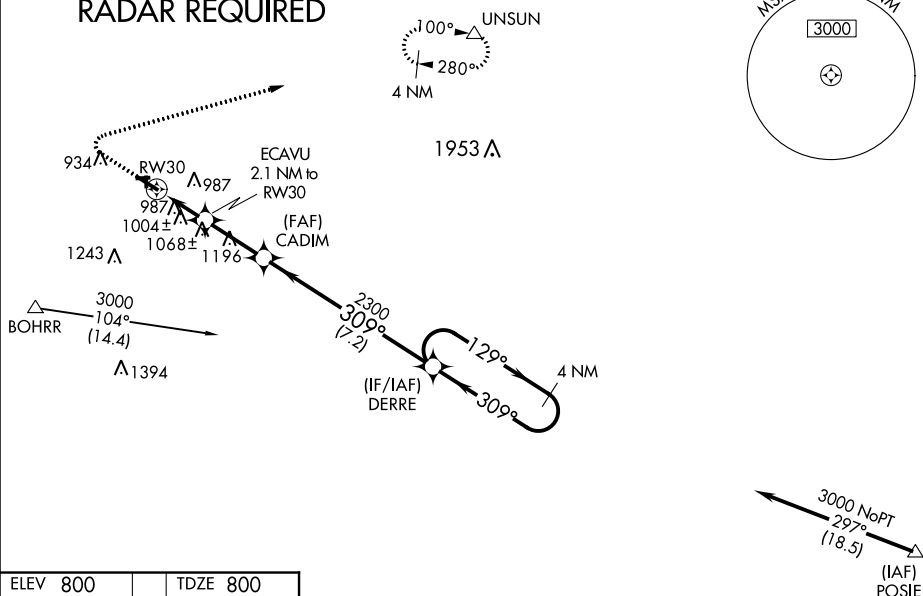
**MISSED APPROACH:**  
Climb to 1400 then climbing  
right turn to 3000 direct  
UNSUB and hold.

GERALD R FORD INTL ASOS  
118.725

GREAT LAKES APP CON ★  
128.4 257.6

UNICOM  
123.075 (CTAF) **L**

## RADAR REQUIRED



ELEV 800

TDZE 800

MRL Rwy 12-30

REIL Rwy 12 and 30

Diagram illustrating a holding pattern for RW30. The pattern consists of a series of turns: a 180° turn, followed by a 309° turn, then a 129° turn, and finally a 309° turn back to the start. The pattern is centered on the RW30 runway. The distance from the runway to the start of the pattern is 2.1 NM. The distance between the start and the first turn is 2.5 NM. The distance between the first and second turns is 7.2 NM. The altitude at the start is 1500 feet. The altitude at the first turn is 2300 feet. The altitude at the second turn is 2300 feet. The altitude at the end of the pattern is 3000 feet. The pattern is labeled 'RW30' and 'Holding Pattern'. The diagram also shows a '4 NM Holding Pattern' and a 'GP 3.00° TCH 40'.



