

Flight Procedures Cover Page	Task Action: P-NOTAM	Task Type: IAP	Estimated Chart Date: 12/02/2021	APWS Task ID: 9832548FE82F4FD3851208D37E87E42A	APWS Project ID: F2138EE506374F93A6440D68C29182EE
Procedure: RNAV (GPS) RWY 31 AMDT 1B		Enroute: NO	Specialist: Lindsey, John		Agreement Number:
Airport ID: KLEE		Airport City: LEESBURG		State: FL	
Facility ID:	Facility Type:	Flight Inspection Remark Type:			
<p>Procedure Comments: P-NOTAM New RWY 31 VGSI requires Non-Coincident note.</p> <p>Processed IAW Technical Support Group (AJF-17) Memo dated 07/07/2021, Subject: Guidance for Procedural Changes Requiring Flight Inspection/Validation</p> <p>pending airport data used</p> <p>contact John Bordy (405) 954-0980</p>					

J ZEDER 08/20/2021



LEESBURG, FLORIDA

AL 6676 (FAA)

21224

WAAS CH 97602 W31A	APP CRS 315°	Rwy Idg TDZE 5900 Apt Elev 76
--	------------------------	---

OLD

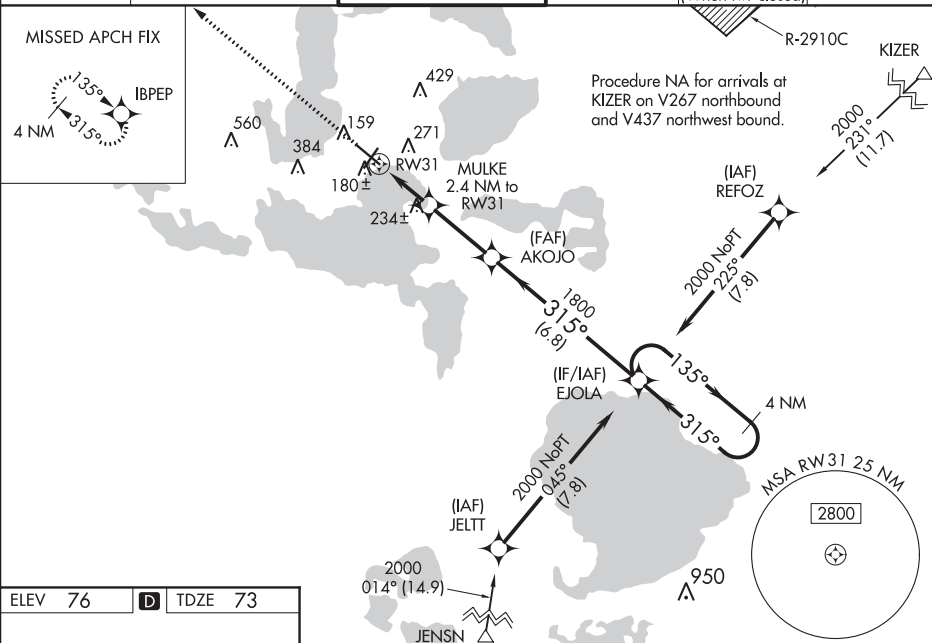
RNAV (GPS) RWY 31

LEESBURG INTL (LEE)

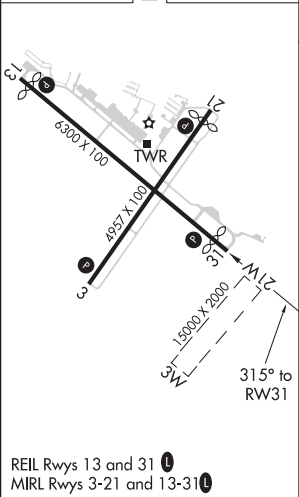
⚠ Baro-VNAV NA when using Orlando Intl altimeter setting. For uncompensated Baro-VNAV systems, LNAV/VNAV NA below -15°C (5°F) or above 43°C (109°F). DME/DME RNP-0.3 NA. Helicopter visibility reduction below 1 SM NA. When local altimeter setting not received, use Orlando Intl altimeter setting and increase all DA 85 feet and all MDA 100 feet; increase LPV all Cats visibility 1/8 mile, increase LNAV/VNAV all Cats, LNAV and Circling Cats C/D visibility 1/4 mile. When VGSI inop, Straight-in/Circling Rwy 31 procedure NA at night. When VGSI inop, Circling Rwy 3 and 21 NA at night.

MISSED APPROACH:
Climb to 2000 direct
IBPEP and hold.

ATIS 134.325	ORLANDO APP CON 135.3 351.9	LEESBURG TOWER ★ 119.35 (CTAF) 0	GND CON 121.725	CLNC DEL 120.225 (When twr closed)	UNICOM 122.725
------------------------	---------------------------------------	--	---------------------------	---	--------------------------



ELEV 76	TDZE 73
---------	---------



REIL Rwy 13 and 31
MIRL Rwy 3-21 and 13-31

LEESBURG, FLORIDA

Amdt 1A 24JUL14

28°49'N-81°49'W

RNAV (GPS) RWY 31

LEESBURG INTL (LEE)

SE-3, 12 AUG 2021 to 09 SEP 2021

SE-3, 12 AUG 2021 to 09 SEP 2021