

DME DME Assessment Results for DSNEE5 path EMLLD_DRTHI

Results Summary

Flyability:	Completed
DME/DME:	Completed - No Critical DMEs
Name:	Jeffery D-CTR Camara
Project File:	C:\Users\Jeffery D-CTR Camara\Targets Projects\SNA DSNEE STAR\DSNEE (RNAV).tgs
Output File:	D:\SNA DSNEE STAR\DSNEE STAR ESVs\KLGB [IFPA] DSNEE5 20201029_0608 PDT\EMLLD_DRTHI\KLGB DSNEE5 RNAV STAR EMLLD DRTHI 20201029_0608 PDT.pdf
Procedure Name:	DSNEE5
Software: DmeDmePlugin:	6.2.0
Date/Time:	10/29/2020 06:08 PDT
Databases:	DTED 0

Failures

No Failures

Warnings

No Warnings

Notes For Flight Check

None

Flight Plan

Name	Type	Lat/Lon	Altitude (ft)	VNAV Mode	Ground Speed (kts)	Turn Type	Leg Type
EMLLD	WP	N33° 45' 28.80", W114° 08' 46.00"	17000	VNAV	280	FLY_BY	TF
LITNG	WP	N33° 50' 45.32", W114° 54' 43.84"	17000	VNAV	280	FLY_BY	TF
WTTCH	WP	N33° 55' 33.39", W115° 38' 48.40"	17000	VNAV	280	FLY_BY	TF
DRTHI	WP	N33° 57' 53.23", W116° 12' 10.83"	17000	VNAV	280	FLY_BY	TF

Flyability

Flight Type:	RNAV_STAR
Selected Airport:	KLGB [IFPA]
Climb Gradient:	None assigned
Speeds:	200 Ground Speed to 11000 FT
	240 Ground Speed to 18000 FT
	260 Ground Speed to 24000 FT
	340 Ground Speed above 24000 FT
Descent During a Turn:	Allowed
VNAV Mode:	Flight Plan

DME DME Assessment Results for DSNEE5 path EMLLD_DRTHI

DME/DME	
RNP:	RNP 2
Flight Mode:	Manual
Line of Sight (DTED Level 0 Max):	Evaluated
Inertial Drift:	Enabled
Initial Drift:	0.558 NM
INS Drift Rate:	8.0 NM/Hour
Range Mode:	OSV
RNP Edges:	Evaluated
Min DME Range:	3.0 NM
DME Types:	DME, VOR-DME, VORTAC
DME Include Angles:	30 to 150
Critical DMEs:	Allowed
DoD Facilities:	Included
Foreign Facilities:	Not included
High DMEs:	Included
Low DMEs:	Included
Terminal DMEs:	Included
Flight Check DMEs:	Not selected
Higher Altitudes:	Not Evaluated
Near Maximum Altitude:	Not Evaluated
Automatic ESVs:	Not enabled
Disabled DMEs:	None

DME/DME (Continued)										
DMEs Used										
#	Name	Lat/Lon	MAGVAR	Range	Type	Source	Critical	Status	Time	Distance
1	BZA	N32° 46' 05.19", W114° 36' 10.61"	14.0 E	130	H	IFPA	NO	Enabled	87.1 %	87.1 %
2	IPL	N32° 44' 55.92", W115° 30' 30.90"	14.0 E	130	H	IFPA	NO	Enabled	100 %	100 %
3	PKE	N34° 06' 07.10", W114° 40' 55.44"	15.0 E	130	H	IFPA	NO	Enabled	69 %	69 %
4	PDZ	N33° 55' 06.01", W117° 31' 47.99"	15.0 E	130	H	IFPA	NO	Enabled	32.4 %	32.4 %
5	TRM	N33° 37' 41.15", W116° 09' 36.70"	13.0 E	130	H	IFPA	NO	Enabled	71.4 %	71.4 %
6	HEC	N34° 47' 49.26", W116° 27' 46.52"	15.0 E	130	H	IFPA	NO	Enabled	65.1 %	65.1 %
7	PSP	N33° 52' 12.05", W116° 25' 47.22"	13.0 E	40	L	IFPA	NO	Enabled	26.8 %	26.8 %
8	EED	N34° 45' 57.62", W114° 28' 26.77"	15.0 E	130	H	IFPA	NO	Enabled	51.1 %	51.1 %
9	GBN	N32° 57' 22.53", W112° 40' 27.38"	14.0 E	130	H	IFPA	NO	Enabled	10.9 %	10.9 %
10	MZB	N32° 46' 55.95", W117° 13' 31.53"	15.0 E	130	H	IFPA	NO	Enabled	12.9 %	12.9 %
11	TNP	N34° 06' 44.04", W115° 46' 11.66"	15.0 E	40	L	IFPA	NO	Enabled	55.8 %	55.8 %
12	BLH	N33° 35' 45.83", W114° 45' 40.58"	14.0 E	130	H	IFPA	NO	Enabled	91.8 %	91.8 %
13	OCN	N33° 14' 26.28", W117° 25' 03.79"	15.0 E	130	H	IFPA	NO	Enabled	17.7 %	17.7 %

DME DME Assessment Results for DSNEE5 path EMLLD_DRTHI

Flight Check DME Selection						
Distance [NM]	Selected DMEs					Alternate
0.0	EED	BLH	BZA	GBN	IPL	
11.3	EED	BLH	BZA	IPL		
21.0	BZA	TRM	EED	BLH	IPL	
23.7	BZA	IPL				
32.1	BZA	TRM	BLH	EED	PKE	IPL
37.0	BZA	TRM	BLH	PKE	HEC	IPL
90.3	BLH	TRM	PSP	HEC	IPL	PKE

Inertial Drift Segments			
#	Start Location	End Location	Length [NM]

Available DMEs by Waypoints		
Waypoint Before	Waypoint After	DME List
EMLLD	LITNG	GBN, IPL, EED, HEC, BZA, PKE, TRM, BLH
LITNG	WTTCH	IPL, HEC, TNP, PDZ, BZA, PKE, TRM, BLH
WTTCH	DRTHI	IPL, MZB, EED, PDZ, TNP, HEC, BZA, PKE, OCN, PSP, TRM, BLH

DME DME Assessment Results for DSNEE5 path EMLLD_DRTHI

User Data Files

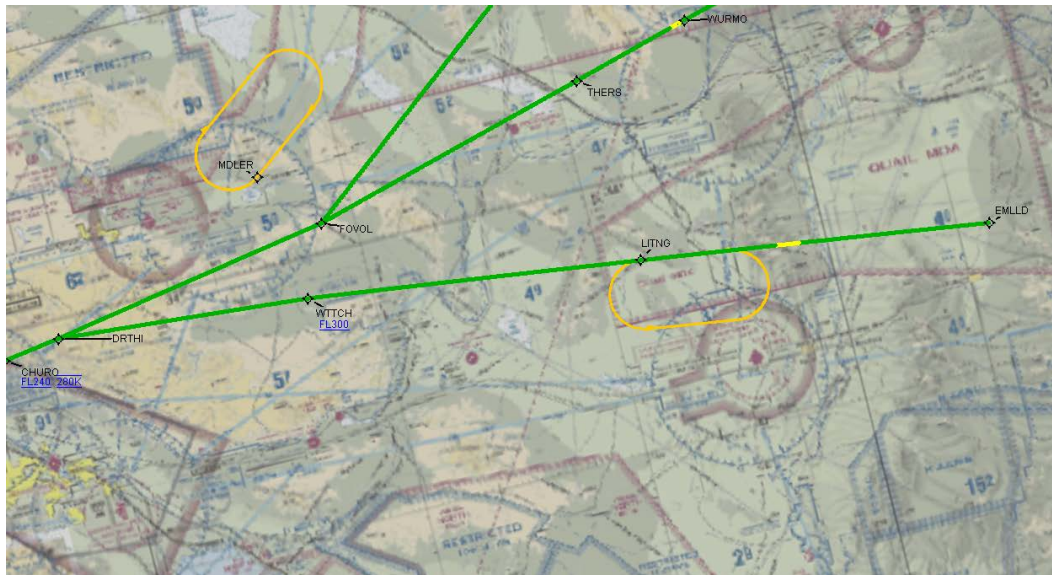
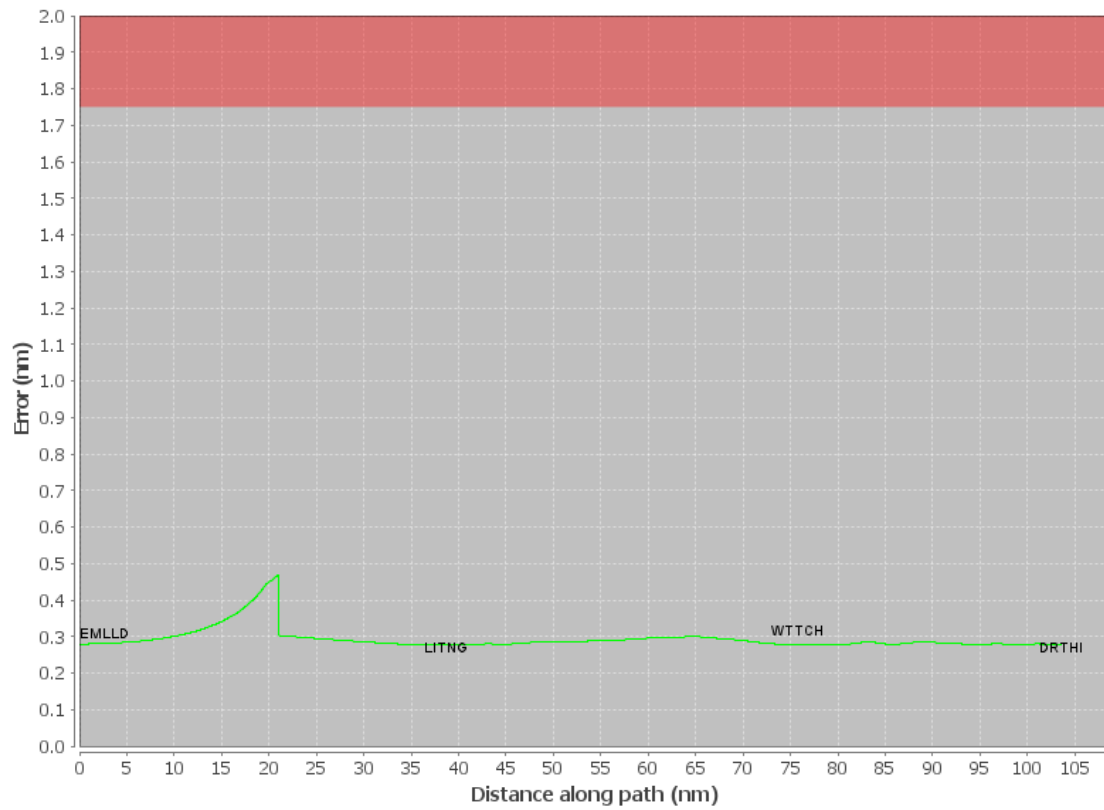
#	File Name
1	UserDMEs_KLGB DSNEE2 STAR DSNEE MIDDs 20170410_2241.udt

User DMEs

#	Name	Lat/Lon	MAGVAR	Range	Elevation [ft]	Frequency	Replaces	Status
1	UDT ESV IPL IPL [IFPA]	N32° 44' 55.92", W115° 30' 30.90"	14.0 E	130	-3.3	115.9	UDT ESV IPL	
ESV:		Bearing [True]: 320.0° to 347.0° Bearing [Mag]: 306.0° to 333.0°				Arc Distance: Out to 140.0 NM Altitude: 12900.0 to 45000.0 ft		
2	BLD FAA 702031-48 BLD [IFPA]	N35° 59' 44.84", W114° 51' 48.88"	15.0 E	130	3641.9	116.7	BLD FAA 702031-48	
ESV:		Bearing [True]: 177.0° to 230.0° Bearing [Mag]: 162.0° to 215.0°				Arc Distance: Out to 95.0 NM Altitude: 17000.0 to 20000.0 ft		
3	UDT ESV SXC SXC [IFPA]	N33° 22' 30.20", W118° 25' 11.68"	15.0 E	40	2126	111.4	UDT ESV SXC	
ESV:		Bearing [True]: 47.0° to 80.0° Bearing [Mag]: 32.0° to 65.0°				Arc Distance: Out to 88.0 NM Altitude: 5800.0 to 22000.0 ft		
4	UDT ESV LAX LAX [IFPA]	N33° 55' 59.34", W118° 25' 55.25"	15.0 E	130	188.4	113.6	UDT ESV LAX	
ESV:		Bearing [True]: 74.0° to 107.0° Bearing [Mag]: 59.0° to 92.0°				Arc Distance: Out to 103.0 NM Altitude: 6000.0 to 20000.0 ft		
5	UDT ESV JLI JLI [IFPA]	N33° 08' 25.65", W116° 35' 09.37"	15.0 E	40	5560	114.0	UDT ESV JLI	
ESV:		Bearing [True]: 323.0° to 24.0° Bearing [Mag]: 308.0° to 9.0°				Arc Distance: Out to 53.0 NM Altitude: 8000.0 to 24000.0 ft		
6	UDT ESV BLD BLD [IFPA]	N35° 59' 44.84", W114° 51' 48.88"	15.0 E	130	3641.9	116.7	UDT ESV BLD	
ESV:		Bearing [True]: 219.0° to 237.0° Bearing [Mag]: 204.0° to 222.0°				Arc Distance: Out to 99.0 NM Altitude: 17000.0 to 20000.0 ft		
7	BLD FAA 702031-36 BLD [IFPA]	N35° 59' 44.84", W114° 51' 48.88"	15.0 E	130	3641.9	116.7	BLD FAA 702031-36	
ESV:		Bearing [True]: 154.0° to 179.0° Bearing [Mag]: 139.0° to 164.0°				Arc Distance: Out to 110.0 NM Altitude: 17000.0 to 22000.0 ft		
8	UDT ESV IGM IGM [IFPA]	N35° 15' 37.85", W113° 56' 02.69"	15.0 E	40	3428.5	108.8	UDT ESV IGM	
ESV:		Bearing [True]: 214.0° to 233.0° Bearing [Mag]: 199.0° to 218.0°				Arc Distance: Out to 77.0 NM Altitude: 17000.0 to 22000.0 ft		
9	UDT ESV PMD PMD [IFPA]	N34° 37' 53.03", W118° 03' 49.76"	15.0 E	130	2509.8	114.5	UDT ESV PMD	
ESV:		Bearing [True]: 86.0° to 125.0° Bearing [Mag]: 71.0° to 110.0°				Arc Distance: Out to 72.0 NM Altitude: 9700.0 to 18000.0 ft		
10	UDT ESV BLD BLD [IFPA]	N35° 59' 44.84", W114° 51' 48.88"	15.0 E	130	3641.9	116.7	UDT ESV BLD	
ESV:		Bearing [True]: 154.0° to 179.0° Bearing [Mag]: 139.0° to 164.0°				Arc Distance: Out to 110.0 NM Altitude: 17000.0 to 22000.0 ft		
11	UDT ESV POM POM [IFPA]	N34° 04' 42.20", W117° 47' 13.47"	15.0 E	40	1302.5	110.4	UDT ESV POM	
ESV:		Bearing [True]: 81.0° to 138.0° Bearing [Mag]: 66.0° to 123.0°				Arc Distance: Out to 81.0 NM Altitude: 12800.0 to 20000.0 ft		

DME DME Assessment Results for DSNEE5 path EMLLD_DRTHI

DME Error



DME DME Assessment Results for DSNEE5 path FOVOL_EED

Results Summary

Flyability:	Completed
DME/DME:	Completed - No Critical DMEs
Name:	Jeffery D-CTR Camara
Project File:	C:\Users\Jeffery D-CTR Camara\Targets Projects\SNA DSNEE STAR\DSNEE (RNAV).tgs
Output File:	D:\SNA DSNEE STAR\DSNEE STAR ESVs\KLGB [IFPA] DSNEE5 20201029_0608 PDT\FOVOL_EED\KLGB DSNEE5 RNAV STAR FOVOL EED 20201029_0608 PDT.pdf
Procedure Name:	DSNEE5
Software: DmeDmePlugin:	6.2.0
Date/Time:	10/29/2020 06:08 PDT
Databases:	DTED 0

Failures

No Failures

Warnings

No Warnings

Notes For Flight Check

None

Flight Plan

Name	Type	Lat/Lon	Altitude (ft)	VNAV Mode	Ground Speed (kts)	Turn Type	Leg Type
FOVOL	WP	N34° 03' 12.00", W115° 34' 37.00"	17000	VNAV	280	FLY_BY	TF
ONLYY	WP	N34° 27' 25.33", W114° 57' 22.47"	17000	VNAV	280	FLY_BY	TF
EED	WP	N34° 45' 57.62", W114° 28' 26.77"	18700	VNAV	280	FLY_BY	TF

Flyability

Flight Type:	RNAV_STAR
Selected Airport:	KLGB [IFPA]
Climb Gradient:	None assigned
Speeds:	200 Ground Speed to 11000 FT
	240 Ground Speed to 18000 FT
	260 Ground Speed to 24000 FT
	340 Ground Speed above 24000 FT
Descent During a Turn:	Allowed
VNAV Mode:	Flight Plan

DME DME Assessment Results for DSNEE5 path FOVOL_EED

DME/DME	
RNP:	RNP 2
Flight Mode:	Manual
Line of Sight (DTED Level 0 Max):	Evaluated
Inertial Drift:	Enabled
Initial Drift:	0.558 NM
INS Drift Rate:	8.0 NM/Hour
Range Mode:	OSV
RNP Edges:	Evaluated
Min DME Range:	3.0 NM
DME Types:	DME, VOR-DME, VORTAC
DME Include Angles:	30 to 150
Critical DMEs:	Allowed
DoD Facilities:	Included
Foreign Facilities:	Not included
High DMEs:	Included
Low DMEs:	Included
Terminal DMEs:	Included
Flight Check DMEs:	Not selected
Higher Altitudes:	Not Evaluated
Near Maximum Altitude:	Not Evaluated
Automatic ESVs:	Not enabled
Disabled DMEs:	None

DME/DME (Continued)										
DMEs Used										
#	Name	Lat/Lon	MAGVAR	Range	Type	Source	Critical	Status	Time	Distance
1	BZA	N32° 46' 05.19", W114° 36' 10.61"	14.0 E	130	H	IFPA	NO	Enabled	32.5 %	32.5 %
2	IPL	N32° 44' 55.92", W115° 30' 30.90"	14.0 E	130	H	IFPA	NO	Enabled	53.2 %	53.2 %
3	GFS	N35° 07' 52.12", W115° 10' 35.19"	15.0 E	40	L	IFPA	NO	Enabled	1.6 %	1.6 %
4	PKE	N34° 06' 07.10", W114° 40' 55.44"	15.0 E	130	H	IFPA	NO	Enabled	87.5 %	87.5 %
5	PDZ	N33° 55' 06.01", W117° 31' 47.99"	15.0 E	130	H	IFPA	NO	Enabled	0.3 %	0.3 %
6	TRM	N33° 37' 41.15", W116° 09' 36.70"	13.0 E	130	H	IFPA	NO	Enabled	20.7 %	20.7 %
7	HEC	N34° 47' 49.26", W116° 27' 46.52"	15.0 E	130	H	IFPA	NO	Enabled	65.8 %	65.8 %
8	EED	N34° 45' 57.62", W114° 28' 26.77"	15.0 E	130	H	IFPA	NO	Enabled	95.4 %	95.4 %
9	LAS	N36° 04' 46.93", W115° 09' 35.27"	15.0 E	130	H	IFPA	NO	Enabled	24.9 %	24.9 %
10	TNP	N34° 06' 44.04", W115° 46' 11.66"	15.0 E	40	L	IFPA	NO	Enabled	47 %	47 %
11	IGM	N35° 15' 37.85", W113° 56' 02.69"	15.0 E	40	L	IFPA	NO	Enabled	29.6 %	29.6 %
12	BLH	N33° 35' 45.83", W114° 45' 40.58"	14.0 E	130	H	IFPA	NO	Enabled	36.9 %	36.9 %
13	BLD	N35° 59' 44.84", W114° 51' 48.88"	15.0 E	130	H	IFPA	NO	Enabled	31 %	31 %

DME DME Assessment Results for DSNEE5 path FOVOL_EED

Flight Check DME Selection						
Distance [NM]	Selected DMEs					Alternate
0.0	HEC	TRM	EED	BLH	IPL	PKE
4.3	HEC	TRM	EED	IPL	PKE	TNP
14.4	EED	HEC	IPL	PKE	BZA	TNP
22.7	EED	HEC	PKE	IPL	TNP	
28.0	EED	PKE	HEC	TNP		
32.7	EED	PKE	IGM	HEC		
35.8	EED	PKE	HEC			
39.4	EED	PKE	BLH	HEC		
45.7	EED	PKE	IGM	BLH	BLD	
47.9	EED	PKE	IGM	BLH		
50.0	EED	PKE	IGM	BLH	BLD	
59.7	EED	LAS	BLD	IGM	BLH	IPL
59.8	EED	LAS	BLD	IPL		
63.5	EED	LAS	IGM	BLD	IPL	
64.2	EED	LAS	IPL	BLD		
65.2	IGM	LAS	BLD	IPL		
65.3	EED	GFS	PKE	BLH	LAS	BLD
66.5	IGM	LAS	BLD			
67.6	IGM	BLD				

Inertial Drift Segments			
#	Start Location	End Location	Length [NM]

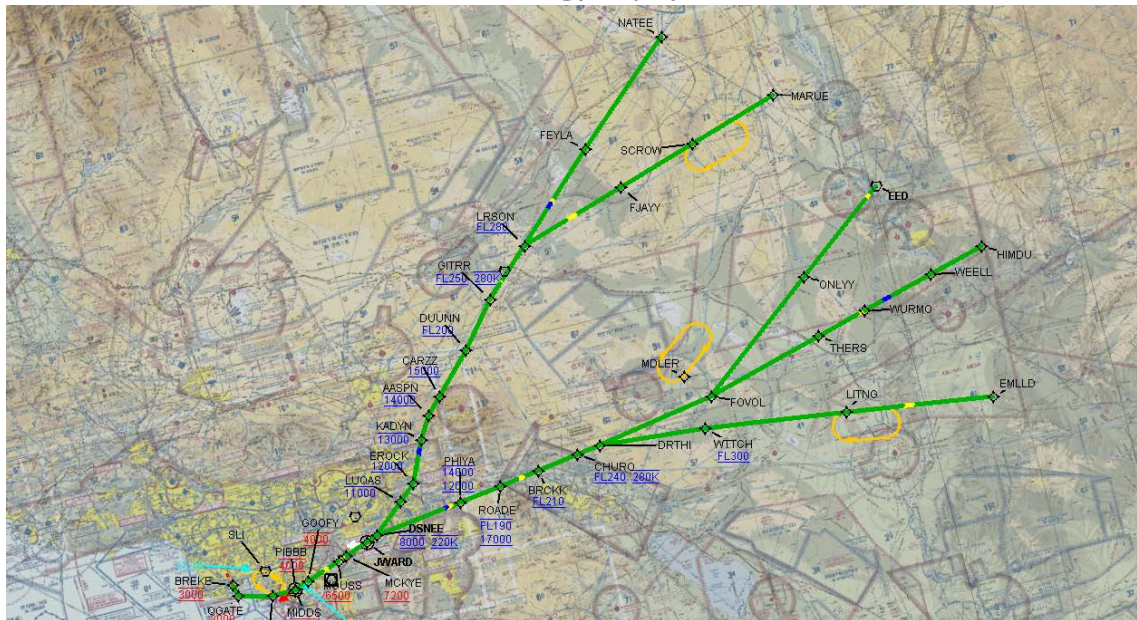
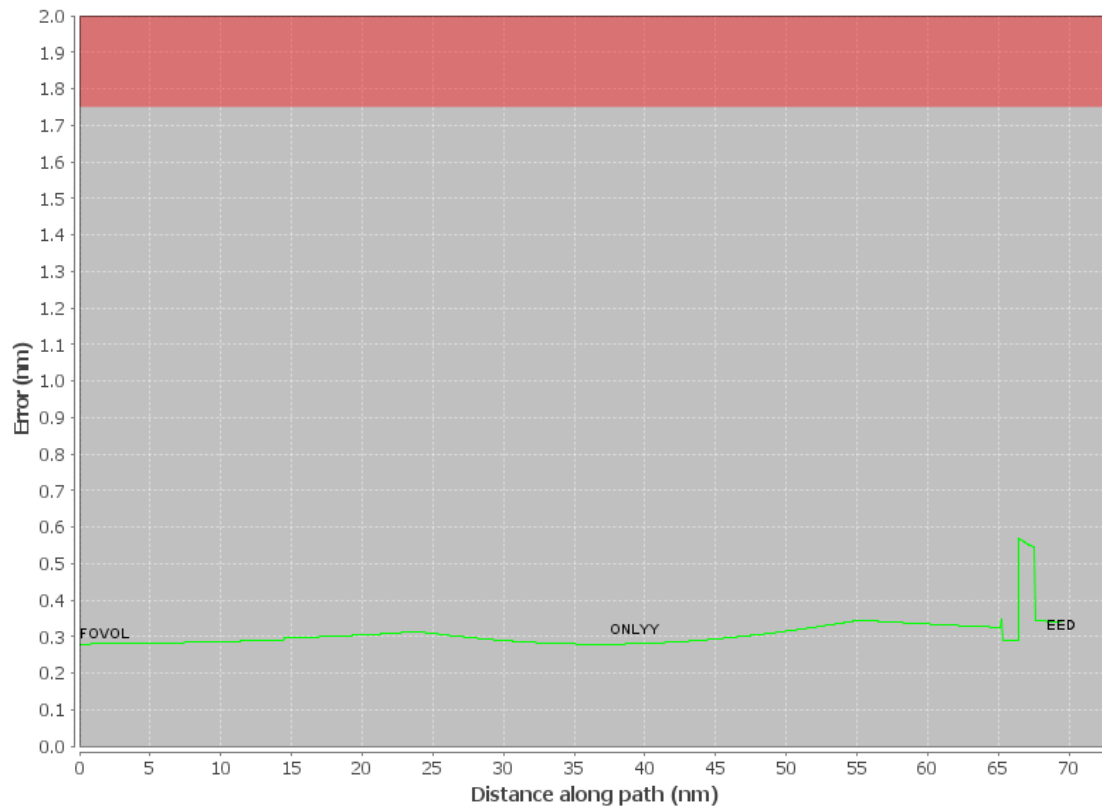
Available DMEs by Waypoints		
Waypoint Before	Waypoint After	DME List
FOVOL	ONLYYY	IPL, EED, PDZ, TNP, HEC, BZA, PKE, TRM, IGM, BLH
ONLYYY	EED	IPL, EED, GFS, HEC, PKE, BLD, IGM, BLH, LAS

DME DME Assessment Results for DSNEE5 path FOVOL_EED

User Data Files								
#	File Name							
1	UserDMEs_KLGB DSNEE2 STAR DSNEE MIDDs 20170410_2241.udt							
User DMEs								
#	Name	Lat/Lon	MAGVAR	Range	Elevation [ft]	Frequency	Replaces	Status
1	UDT ESV IPL IPL [IFPA]	N32° 44' 55.92", W115° 30' 30.90"	14.0 E	130	-3.3	115.9	UDT ESV IPL	
ESV:		Bearing [True]: 320.0° to 347.0° Bearing [Mag]: 306.0° to 333.0°				Arc Distance: Out to 140.0 NM Altitude: 12900.0 to 45000.0 ft		
2	BLD FAA 702031-48 BLD [IFPA]	N35° 59' 44.84", W114° 51' 48.88"	15.0 E	130	3641.9	116.7	BLD FAA 702031-48	
ESV:		Bearing [True]: 177.0° to 230.0° Bearing [Mag]: 162.0° to 215.0°				Arc Distance: Out to 95.0 NM Altitude: 17000.0 to 20000.0 ft		
3	UDT ESV SXC SXC [IFPA]	N33° 22' 30.20", W118° 25' 11.68"	15.0 E	40	2126	111.4	UDT ESV SXC	
ESV:		Bearing [True]: 47.0° to 80.0° Bearing [Mag]: 32.0° to 65.0°				Arc Distance: Out to 88.0 NM Altitude: 5800.0 to 22000.0 ft		
4	UDT ESV LAX LAX [IFPA]	N33° 55' 59.34", W118° 25' 55.25"	15.0 E	130	188.4	113.6	UDT ESV LAX	
ESV:		Bearing [True]: 74.0° to 107.0° Bearing [Mag]: 59.0° to 92.0°				Arc Distance: Out to 103.0 NM Altitude: 6000.0 to 20000.0 ft		
5	UDT ESV JLI JLI [IFPA]	N33° 08' 25.65", W116° 35' 09.37"	15.0 E	40	5560	114.0	UDT ESV JLI	
ESV:		Bearing [True]: 323.0° to 24.0° Bearing [Mag]: 308.0° to 9.0°				Arc Distance: Out to 53.0 NM Altitude: 8000.0 to 24000.0 ft		
6	UDT ESV BLD BLD [IFPA]	N35° 59' 44.84", W114° 51' 48.88"	15.0 E	130	3641.9	116.7	UDT ESV BLD	
ESV:		Bearing [True]: 219.0° to 237.0° Bearing [Mag]: 204.0° to 222.0°				Arc Distance: Out to 99.0 NM Altitude: 17000.0 to 20000.0 ft		
7	BLD FAA 702031-36 BLD [IFPA]	N35° 59' 44.84", W114° 51' 48.88"	15.0 E	130	3641.9	116.7	BLD FAA 702031-36	
ESV:		Bearing [True]: 154.0° to 179.0° Bearing [Mag]: 139.0° to 164.0°				Arc Distance: Out to 110.0 NM Altitude: 17000.0 to 22000.0 ft		
8	UDT ESV IGM IGM [IFPA]	N35° 15' 37.85", W113° 56' 02.69"	15.0 E	40	3428.5	108.8	UDT ESV IGM	
ESV:		Bearing [True]: 214.0° to 233.0° Bearing [Mag]: 199.0° to 218.0°				Arc Distance: Out to 77.0 NM Altitude: 17000.0 to 22000.0 ft		
9	UDT ESV PMD PMD [IFPA]	N34° 37' 53.03", W118° 03' 49.76"	15.0 E	130	2509.8	114.5	UDT ESV PMD	
ESV:		Bearing [True]: 86.0° to 125.0° Bearing [Mag]: 71.0° to 110.0°				Arc Distance: Out to 72.0 NM Altitude: 9700.0 to 18000.0 ft		
10	UDT ESV BLD BLD [IFPA]	N35° 59' 44.84", W114° 51' 48.88"	15.0 E	130	3641.9	116.7	UDT ESV BLD	
ESV:		Bearing [True]: 154.0° to 179.0° Bearing [Mag]: 139.0° to 164.0°				Arc Distance: Out to 110.0 NM Altitude: 17000.0 to 22000.0 ft		
11	UDT ESV POM POM [IFPA]	N34° 04' 42.20", W117° 47' 13.47"	15.0 E	40	1302.5	110.4	UDT ESV POM	
ESV:		Bearing [True]: 81.0° to 138.0° Bearing [Mag]: 66.0° to 123.0°				Arc Distance: Out to 81.0 NM Altitude: 12800.0 to 20000.0 ft		

DME DME Assessment Results for DSNEE5 path FOVOL_EED

DME Error



DME DME Assessment Results for DSNEE5 path GOOFY_MIDDS

Results Summary

Flyability:	Completed
DME/DME:	Completed - No Critical DMEs
Name:	Jeffery D-CTR Camara
Project File:	C:\Users\Jeffery D-CTR Camara\Targets Projects\SNA DSNEE STAR\DSNEE (RNAV).tgs
Output File:	D:\SNA DSNEE STAR\DSNEE STAR ESVs\KLGB [IFPA] DSNEE5 20201029_0608 PDT\GOOFY_MIDDS\KLGB DSNEE5 RNAV STAR GOOFY MIDDS 20201029_0608 PDT.pdf
Procedure Name:	DSNEE5
Software: DmeDmePlugin:	6.2.0
Date/Time:	10/29/2020 06:08 PDT
Databases:	DTED 0

Failures

No Failures

Warnings

No Warnings

Notes For Flight Check

None

Flight Plan

Name	Type	Lat/Lon	Altitude (ft)	VNAV Mode	Ground Speed (kts)	Turn Type	Leg Type
GOOFY	WP	N33° 41' 48.56", W117° 51' 02.13"	4000	VNAV	220	FLY_BY	TF
MIDDS	WP	N33° 40' 27.26", W117° 55' 32.80"	4000	VNAV	220	FLY_OVER	TF

Flyability

Flight Type:	RNAV STAR
Selected Airport:	KLGB [IFPA]
Climb Gradient:	None assigned
Speeds:	200 Ground Speed to 11000 FT
	240 Ground Speed to 18000 FT
	260 Ground Speed to 24000 FT
	340 Ground Speed above 24000 FT
Descent During a Turn:	Allowed
VNAV Mode:	Flight Plan

DME DME Assessment Results for DSNEE5 path GOOFY_MIDDs

DME/DME	
RNP:	RNP 2
Flight Mode:	Manual
Line of Sight (DTED Level 0 Max):	Evaluated
Inertial Drift:	Enabled
Initial Drift:	0.558 NM
INS Drift Rate:	8.0 NM/Hour
Range Mode:	OSV
RNP Edges:	Evaluated
Min DME Range:	3.0 NM
DME Types:	DME, VOR-DME, VORTAC
DME Include Angles:	30 to 150
Critical DMEs:	Allowed
DoD Facilities:	Included
Foreign Facilities:	Not included
High DMEs:	Included
Low DMEs:	Included
Terminal DMEs:	Included
Flight Check DMEs:	Not selected
Higher Altitudes:	Not Evaluated
Near Maximum Altitude:	Not Evaluated
Automatic ESVs:	Not enabled
Disabled DMEs:	None

DME/DME (Continued)										
DMEs Used										
#	Name	Lat/Lon	MAGVAR	Range	Type	Source	Critical	Status	Time	Distance
1	POM	N34° 04' 42.20", W117° 47' 13.47"	15.0 E	40	L	IFPA	NO	Enabled	100 %	100 %
2	SMO	N34° 00' 37.53", W118° 27' 22.97"	15.0 E	40	L	IFPA	NO	Enabled	100 %	100 %
3	SLI	N33° 46' 59.88", W118° 03' 17.13"	15.0 E	40	L	IFPA	NO	Enabled	100 %	100 %
4	ELB	N33° 40' 33.71", W117° 43' 51.90"	14.0 E	25	T	IFPA	NO	Enabled	100 %	100 %
5	LAX	N33° 55' 59.34", W118° 25' 55.25"	15.0 E	130	H	IFPA	NO	Enabled	100 %	100 %
6	SXC	N33° 22' 30.20", W118° 25' 11.68"	15.0 E	40	L	IFPA	NO	Enabled	100 %	100 %
7	OCN	N33° 14' 26.28", W117° 25' 03.79"	15.0 E	130	H	IFPA	NO	Enabled	72.7 %	72.7 %

Flight Check DME Selection						
Distance [NM]	Selected DMEs					Alternate
0.0	POM	ELB	LAX	SLI	SMO	SXC

Inertial Drift Segments			
#	Start Location	End Location	Length [NM]

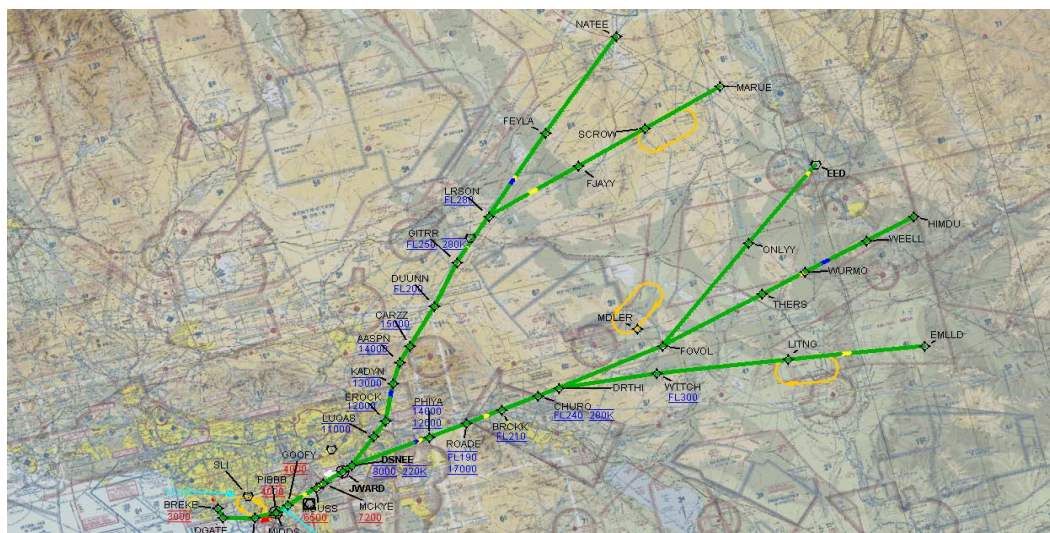
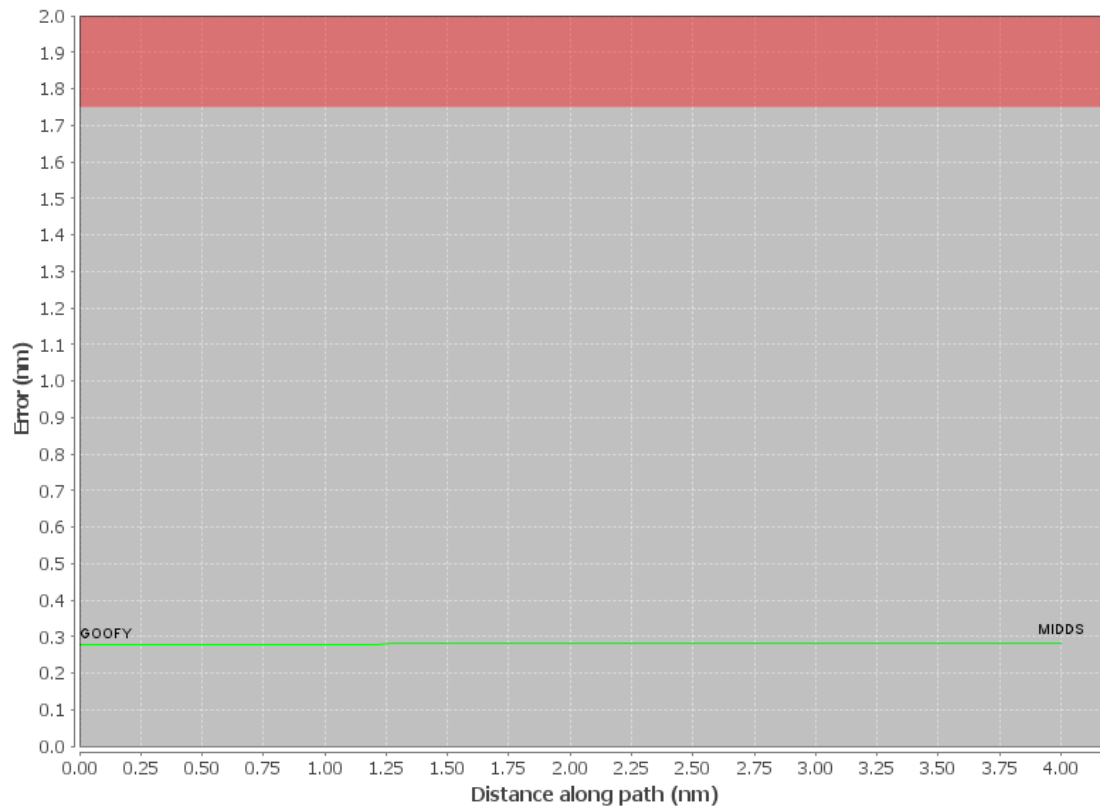
Available DMEs by Waypoints		
Waypoint Before	Waypoint After	DME List
GOOFY	MIDDs	SLI, LAX, SMO, ELB, OCN, POM, SXC

DME DME Assessment Results for DSNEE5 path GOOFY_MIDDS

User Data Files								
#	File Name							
1	UserDMEs_KLGB DSNEE2 STAR DSNEE MIDDS 20170410_2241.udt							
User DMEs								
#	Name	Lat/Lon	MAGVAR	Range	Elevation [ft]	Frequency	Replaces	Status
1	UDT ESV IPL IPL [IFPA]	N32° 44' 55.92", W115° 30' 30.90"	14.0 E	130	-3.3	115.9	UDT ESV IPL	
ESV:		Bearing [True]: 320.0° to 347.0° Bearing [Mag]: 306.0° to 333.0°				Arc Distance: Out to 140.0 NM Altitude: 12900.0 to 45000.0 ft		
2	BLD FAA 702031-48 BLD [IFPA]	N35° 59' 44.84", W114° 51' 48.88"	15.0 E	130	3641.9	116.7	BLD FAA 702031-48	
ESV:		Bearing [True]: 177.0° to 230.0° Bearing [Mag]: 162.0° to 215.0°				Arc Distance: Out to 95.0 NM Altitude: 17000.0 to 20000.0 ft		
3	UDT ESV SXC SXC [IFPA]	N33° 22' 30.20", W118° 25' 11.68"	15.0 E	40	2126	111.4	UDT ESV SXC	
ESV:		Bearing [True]: 47.0° to 80.0° Bearing [Mag]: 32.0° to 65.0°				Arc Distance: Out to 88.0 NM Altitude: 5800.0 to 22000.0 ft		
4	UDT ESV LAX LAX [IFPA]	N33° 55' 59.34", W118° 25' 55.25"	15.0 E	130	188.4	113.6	UDT ESV LAX	
ESV:		Bearing [True]: 74.0° to 107.0° Bearing [Mag]: 59.0° to 92.0°				Arc Distance: Out to 103.0 NM Altitude: 6000.0 to 20000.0 ft		
5	UDT ESV JLI JLI [IFPA]	N33° 08' 25.65", W116° 35' 09.37"	15.0 E	40	5560	114.0	UDT ESV JLI	
ESV:		Bearing [True]: 323.0° to 24.0° Bearing [Mag]: 308.0° to 9.0°				Arc Distance: Out to 53.0 NM Altitude: 8000.0 to 24000.0 ft		
6	UDT ESV BLD BLD [IFPA]	N35° 59' 44.84", W114° 51' 48.88"	15.0 E	130	3641.9	116.7	UDT ESV BLD	
ESV:		Bearing [True]: 219.0° to 237.0° Bearing [Mag]: 204.0° to 222.0°				Arc Distance: Out to 99.0 NM Altitude: 17000.0 to 20000.0 ft		
7	BLD FAA 702031-36 BLD [IFPA]	N35° 59' 44.84", W114° 51' 48.88"	15.0 E	130	3641.9	116.7	BLD FAA 702031-36	
ESV:		Bearing [True]: 154.0° to 179.0° Bearing [Mag]: 139.0° to 164.0°				Arc Distance: Out to 110.0 NM Altitude: 17000.0 to 22000.0 ft		
8	UDT ESV IGM IGM [IFPA]	N35° 15' 37.85", W113° 56' 02.69"	15.0 E	40	3428.5	108.8	UDT ESV IGM	
ESV:		Bearing [True]: 214.0° to 233.0° Bearing [Mag]: 199.0° to 218.0°				Arc Distance: Out to 77.0 NM Altitude: 17000.0 to 22000.0 ft		
9	UDT ESV PMD PMD [IFPA]	N34° 37' 53.03", W118° 03' 49.76"	15.0 E	130	2509.8	114.5	UDT ESV PMD	
ESV:		Bearing [True]: 86.0° to 125.0° Bearing [Mag]: 71.0° to 110.0°				Arc Distance: Out to 72.0 NM Altitude: 9700.0 to 18000.0 ft		
10	UDT ESV BLD BLD [IFPA]	N35° 59' 44.84", W114° 51' 48.88"	15.0 E	130	3641.9	116.7	UDT ESV BLD	
ESV:		Bearing [True]: 154.0° to 179.0° Bearing [Mag]: 139.0° to 164.0°				Arc Distance: Out to 110.0 NM Altitude: 17000.0 to 22000.0 ft		
11	UDT ESV POM POM [IFPA]	N34° 04' 42.20", W117° 47' 13.47"	15.0 E	40	1302.5	110.4	UDT ESV POM	
ESV:		Bearing [True]: 81.0° to 138.0° Bearing [Mag]: 66.0° to 123.0°				Arc Distance: Out to 81.0 NM Altitude: 12800.0 to 20000.0 ft		

DME DME Assessment Results for DSNEE5 path GOOFY_MIDDS

DME Error



DME DME Assessment Results for DSNEE5 path HIMDU_JWARD

Results Summary

Flyability:	Completed
DME/DME:	Completed - No Critical DMEs
Name:	Jeffery D-CTR Camara
Project File:	C:\Users\Jeffery D-CTR Camara\Targets Projects\SNA DSNEE STAR\DSNEE (RNAV).tgs
Output File:	D:\SNA DSNEE STAR\DSNEE STAR ESVs\KLGB [IFPA] DSNEE5 20201029_0608 PDT\HIMDU_JWARD\KLGB DSNEE5 RNAV STAR HIMDU JWARD 20201029_0608 PDT.pdf
Procedure Name:	DSNEE5
Software: DmeDmePlugin:	6.2.0
Date/Time:	10/29/2020 06:08 PDT
Databases:	DTED 0

Failures

No Failures

Warnings

No Warnings

Notes For Flight Check

None

Flight Plan

Name	Type	Lat/Lon	Altitude (ft)	VNAV Mode	Ground Speed (kts)	Turn Type	Leg Type
HIMDU	WP	N34° 24' 06.00", W114° 00' 51.00"	17000	VNAV	280	FLY_BY	TF
WEELL	WP	N34° 20' 14.60", W114° 18' 29.50"	17000	VNAV	280	FLY_BY	TF
WURMO	WP	N34° 15' 13.00", W114° 41' 26.00"	17000	VNAV	280	FLY_BY	TF
THERS	WP	N34° 11' 35.14", W114° 57' 17.65"	17000	VNAV	280	FLY_BY	TF
FOVOL	WP	N34° 03' 12.00", W115° 34' 37.00"	17000	VNAV	280	FLY_BY	TF
DRTHI	WP	N33° 57' 53.23", W116° 12' 10.83"	17000	VNAV	280	FLY_BY	TF
CHURO	WP	N33° 56' 56.38", W116° 19' 49.39"	13000	VNAV	280	FLY_BY	TF
BRCKK	WP	N33° 55' 20.87", W116° 32' 40.97"	13000	VNAV	280	FLY_BY	TF
ROADE	WP	N33° 53' 42.15", W116° 45' 25.03"	13000	VNAV	280	FLY_BY	TF
PHIYA	WP	N33° 52' 13.73", W116° 58' 53.48"	10700	VNAV	280	FLY_BY	TF
DSNEE	WP	N33° 49' 05.48", W117° 26' 50.06"	8000	VNAV	220	FLY_BY	TF
JWARD	WP	N33° 47' 59.00", W117° 30' 20.00"	0	VNAV	220	FLY_OVER	TF

Flyability

Flight Type:	RNAV_STAR
Selected Airport:	KLGB [IFPA]
Climb Gradient:	None assigned
Speeds:	200 Ground Speed to 11000 FT
	240 Ground Speed to 18000 FT
	260 Ground Speed to 24000 FT
	340 Ground Speed above 24000 FT
Descent During a Turn:	Allowed
VNAV Mode:	Flight Plan

DME DME Assessment Results for DSNEE5 path HIMDU_JWARD

DME/DME	
RNP:	RNP 2
Flight Mode:	Manual
Line of Sight (DTED Level 0 Max):	Evaluated
Inertial Drift:	Enabled
Initial Drift:	0.558 NM
INS Drift Rate:	8.0 NM/Hour
Range Mode:	OSV
RNP Edges:	Evaluated
Min DME Range:	3.0 NM
DME Types:	DME, VOR-DME, VORTAC
DME Include Angles:	30 to 150
Critical DMEs:	Allowed
DoD Facilities:	Included
Foreign Facilities:	Not included
High DMEs:	Included
Low DMEs:	Included
Terminal DMEs:	Included
Flight Check DMEs:	Not selected
Higher Altitudes:	Not Evaluated
Near Maximum Altitude:	Not Evaluated
Automatic ESVs:	Not enabled
Disabled DMEs:	None

DME/DME (Continued)										
DMEs Used										
#	Name	Lat/Lon	MAGVAR	Range	Type	Source	Critical	Status	Time	Distance
1	POM	N34° 04' 42.20", W117° 47' 13.47"	15.0 E	40	L	IFPA	NO	Enabled	26.6 %	26.2 %
2	SLI	N33° 46' 59.88", W118° 03' 17.13"	15.0 E	40	L	IFPA	NO	Enabled	7.4 %	6.9 %
3	BZA	N32° 46' 05.19", W114° 36' 10.61"	14.0 E	130	H	IFPA	NO	Enabled	31.9 %	32.1 %
4	IPL	N32° 44' 55.92", W115° 30' 30.90"	14.0 E	130	H	IFPA	NO	Enabled	54.6 %	54.9 %
5	SXC	N33° 22' 30.20", W118° 25' 11.68"	15.0 E	40	L	IFPA	NO	Enabled	17.7 %	17.8 %
6	PKE	N34° 06' 07.10", W114° 40' 55.44"	15.0 E	130	H	IFPA	NO	Enabled	63 %	63.3 %
7	PDZ	N33° 55' 06.01", W117° 31' 47.99"	15.0 E	130	H	IFPA	NO	Enabled	36.2 %	36.1 %
8	HEC	N34° 47' 49.26", W116° 27' 46.52"	15.0 E	130	H	IFPA	NO	Enabled	46.8 %	47.1 %
9	TRM	N33° 37' 41.15", W116° 09' 36.70"	13.0 E	130	H	IFPA	NO	Enabled	38.5 %	38.7 %
10	PSP	N33° 52' 12.05", W116° 25' 47.22"	13.0 E	40	L	IFPA	NO	Enabled	27.6 %	27.8 %
11	EED	N34° 45' 57.62", W114° 28' 26.77"	15.0 E	130	H	IFPA	NO	Enabled	52.8 %	53 %
12	MZB	N32° 46' 55.95", W117° 13' 31.53"	15.0 E	130	H	IFPA	NO	Enabled	8 %	8.1 %
13	TNP	N34° 06' 44.04", W115° 46' 11.66"	15.0 E	40	L	IFPA	NO	Enabled	38.8 %	39 %
14	LAX	N33° 55' 59.34", W118° 25' 55.25"	15.0 E	130	H	IFPA	NO	Enabled	24.8 %	25 %
15	JLI	N33° 08' 25.65", W116° 35' 09.37"	15.0 E	40	L	IFPA	NO	Enabled	18.9 %	19 %
16	BLH	N33° 35' 45.83", W114° 45' 40.58"	14.0 E	130	H	IFPA	NO	Enabled	50.6 %	50.8 %
17	BLD	N35° 59' 44.84", W114° 51' 48.88"	15.0 E	130	H	IFPA	NO	Enabled	18.3 %	18.4 %
18	OCN	N33° 14' 26.28", W117° 25' 03.79"	15.0 E	130	H	IFPA	NO	Enabled	17.2 %	16.8 %

DME DME Assessment Results for DSNEE5 path HIMDU_JWARD

Flight Check DME Selection						
Distance [NM]	Selected DMEs					Alternate
0.0	EED	BLH	PKE	BLD		
21.5	EED	PKE	BLD			
23.2	BLD	PKE				
27.2						
29.6	PKE	HEC	BLH	EED	BLD	
35.3	EED	HEC	BLH	PKE	IPL	BZA
35.8	EED	HEC	BLH	PKE	BZA	BLD
35.8	EED	HEC	BLH	IPL	PKE	BZA
36.5	EED	HEC	BLH	BZA	PKE	
49.6	IPL	PKE	HEC	BLH	BZA	
62.8	EED	HEC	IPL	PKE	TNP	BZA
86.6	HEC	TRM	BLH	EED	IPL	PKE
86.9	HEC	TRM	EED	IPL	PKE	PSP
112.3	PDZ	TRM	TNP	HEC	PSP	PKE
113.5	PDZ	TRM	TNP	PKE	PSP	IPL
114.3	TNP	TRM	PSP	PKE	IPL	OCN
115.2	TNP	TRM	PSP	IPL	OCN	BLH
116.4	TNP	TRM	PSP	OCN	IPL	
117.1	TNP	TRM	PSP	IPL		
117.2	TNP	TRM	PSP	IPL	POM	
121.2	POM	JLI	TNP	TRM	IPL	LAX
125.2	POM	JLI	LAX	TRM	IPL	
135.2	POM	JLI	PSP	LAX		
139.7	JLI	PDZ	PSP	POM	LAX	
140.6	JLI	PDZ	LAX			
141.9	JLI	PDZ	LAX	SXC		
153.7	SXC	JLI	LAX	PDZ	POM	
155.1						
156.0	SXC	POM				
163.2	SXC	POM	PDZ			
164.1	SXC	POM	PDZ	LAX		
165.7	SXC	POM	PDZ	SLI	LAX	
174.6	OCN	SLI	PDZ	POM		
175.3	SXC	PDZ	POM	SLI	LAX	
175.4	OCN	SLI	PDZ	POM		
176.7	OCN	SLI	POM			

Inertial Drift Segments			
#	Start Location	End Location	Length [NM]
1	N34° 17' 09.14", W114° 32' 38.57"	N34° 16' 32.09", W114° 35' 27.18"	2.4088
2	N33° 51' 44.85", W117° 03' 14.54"	N33° 51' 38.07", W117° 04' 15.63"	0.8554

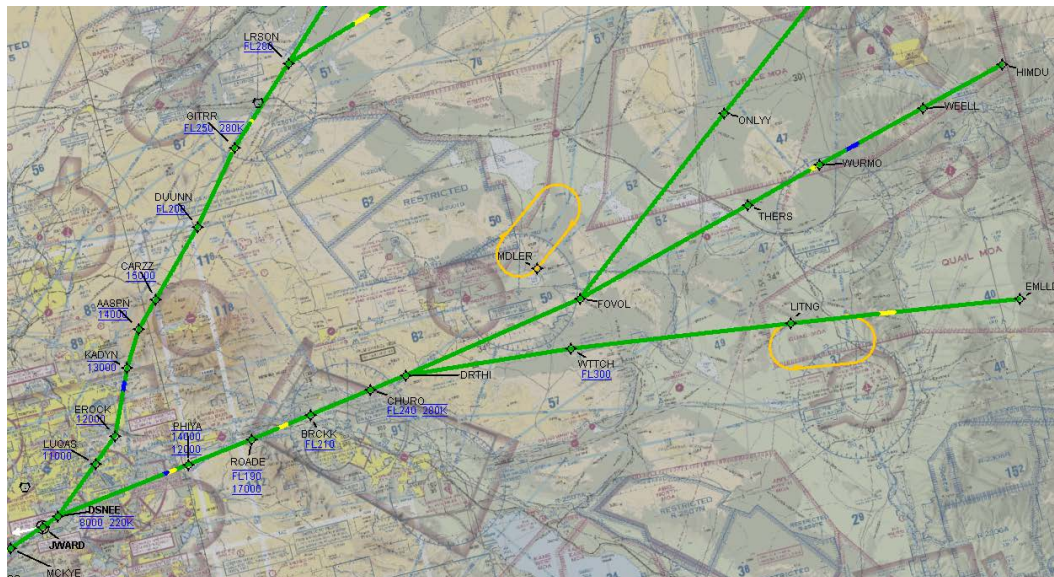
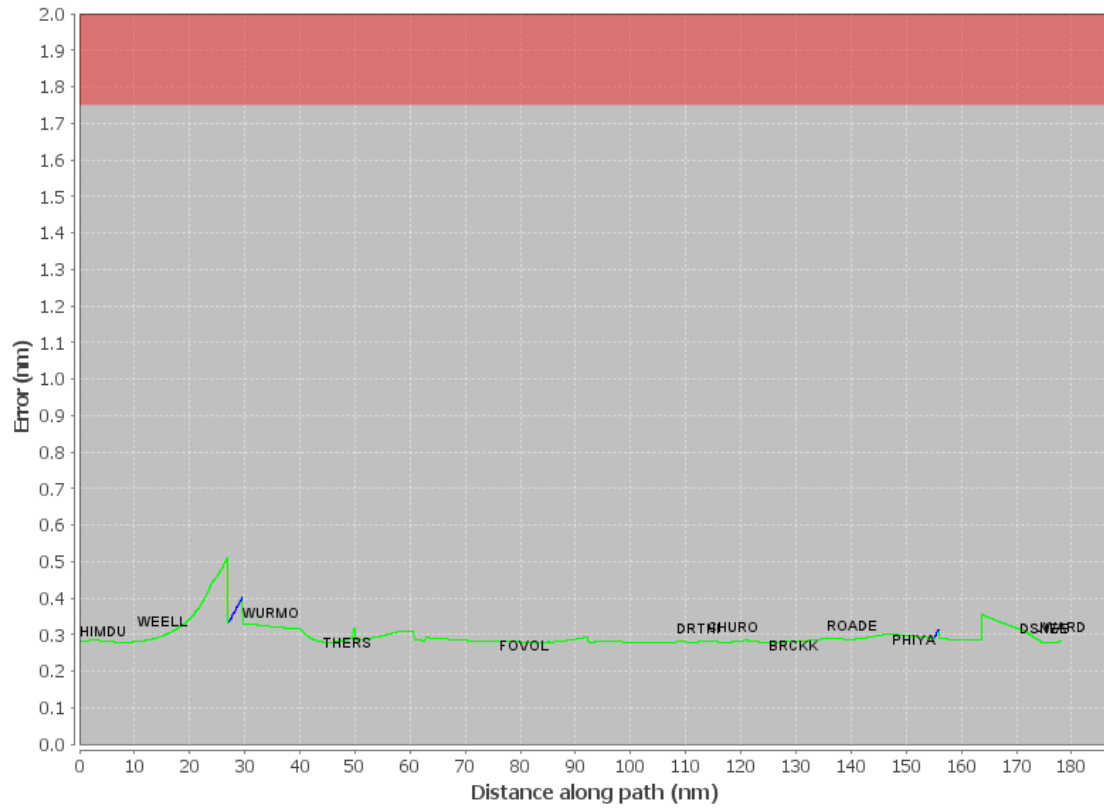
Available DMEs by Waypoints		
Waypoint Before	Waypoint After	DME List
HIMDU	WEELL	EED, PKE, BLD, BLH
WEELL	WURMO	EED, HEC, PKE, BLD, BLH
WURMO	THERS	IPL, EED, HEC, BZA, PKE, BLD, BLH
THERS	FOVOL	IPL, EED, HEC, TNP, PDZ, BZA, PKE, TRM, BLH
FOVOL	DRTHI	IPL, MZB, EED, PDZ, TNP, HEC, BZA, PKE, OCN, PSP, TRM, BLH
DRTHI	CHURO	IPL, MZB, EED, HEC, TNP, PDZ, OCN, PKE, PSP, TRM, BLH, POM
CHURO	BRCKK	LAX, IPL, JLI, TNP, PSP, TRM, POM
BRCKK	ROADE	LAX, IPL, JLI, PDZ, PSP, TRM, POM
ROADE	PHIYA	LAX, JLI, PDZ, PSP, POM, SXC
PHIYA	DSNEE	SLI, LAX, JLI, PDZ, OCN, SXC, POM
DSNEE	JWARD	SLI, LAX, PDZ, OCN, POM, SXC

DME DME Assessment Results for DSNEE5 path HIMDU_JWARD

User Data Files								
#	File Name							
1	UserDMEs_KLGB DSNEE2 STAR DSNEE MIDDs 20170410_2241.udt							
User DMEs								
#	Name	Lat/Lon	MAGVAR	Range	Elevation [ft]	Frequency	Replaces	Status
1	UDT ESV IPL IPL [IFPA]	N32° 44' 55.92", W115° 30' 30.90"	14.0 E	130	-3.3	115.9	UDT ESV IPL	
ESV:		Bearing [True]: 320.0° to 347.0° Bearing [Mag]: 306.0° to 333.0°				Arc Distance: Out to 140.0 NM Altitude: 12900.0 to 45000.0 ft		
2	BLD FAA 702031-48 BLD [IFPA]	N35° 59' 44.84", W114° 51' 48.88"	15.0 E	130	3641.9	116.7	BLD FAA 702031-48	
ESV:		Bearing [True]: 177.0° to 230.0° Bearing [Mag]: 162.0° to 215.0°				Arc Distance: Out to 95.0 NM Altitude: 17000.0 to 20000.0 ft		
3	UDT ESV SXC SXC [IFPA]	N33° 22' 30.20", W118° 25' 11.68"	15.0 E	40	2126	111.4	UDT ESV SXC	
ESV:		Bearing [True]: 47.0° to 80.0° Bearing [Mag]: 32.0° to 65.0°				Arc Distance: Out to 88.0 NM Altitude: 5800.0 to 22000.0 ft		
4	UDT ESV LAX LAX [IFPA]	N33° 55' 59.34", W118° 25' 55.25"	15.0 E	130	188.4	113.6	UDT ESV LAX	
ESV:		Bearing [True]: 74.0° to 107.0° Bearing [Mag]: 59.0° to 92.0°				Arc Distance: Out to 103.0 NM Altitude: 6000.0 to 20000.0 ft		
5	UDT ESV JLI JLI [IFPA]	N33° 08' 25.65", W116° 35' 09.37"	15.0 E	40	5560	114.0	UDT ESV JLI	
ESV:		Bearing [True]: 323.0° to 24.0° Bearing [Mag]: 308.0° to 9.0°				Arc Distance: Out to 53.0 NM Altitude: 8000.0 to 24000.0 ft		
6	UDT ESV BLD BLD [IFPA]	N35° 59' 44.84", W114° 51' 48.88"	15.0 E	130	3641.9	116.7	UDT ESV BLD	
ESV:		Bearing [True]: 219.0° to 237.0° Bearing [Mag]: 204.0° to 222.0°				Arc Distance: Out to 99.0 NM Altitude: 17000.0 to 20000.0 ft		
7	BLD FAA 702031-36 BLD [IFPA]	N35° 59' 44.84", W114° 51' 48.88"	15.0 E	130	3641.9	116.7	BLD FAA 702031-36	
ESV:		Bearing [True]: 154.0° to 179.0° Bearing [Mag]: 139.0° to 164.0°				Arc Distance: Out to 110.0 NM Altitude: 17000.0 to 22000.0 ft		
8	UDT ESV IGM IGM [IFPA]	N35° 15' 37.85", W113° 56' 02.69"	15.0 E	40	3428.5	108.8	UDT ESV IGM	
ESV:		Bearing [True]: 214.0° to 233.0° Bearing [Mag]: 199.0° to 218.0°				Arc Distance: Out to 77.0 NM Altitude: 17000.0 to 22000.0 ft		
9	UDT ESV PMD PMD [IFPA]	N34° 37' 53.03", W118° 03' 49.76"	15.0 E	130	2509.8	114.5	UDT ESV PMD	
ESV:		Bearing [True]: 86.0° to 125.0° Bearing [Mag]: 71.0° to 110.0°				Arc Distance: Out to 72.0 NM Altitude: 9700.0 to 18000.0 ft		
10	UDT ESV BLD BLD [IFPA]	N35° 59' 44.84", W114° 51' 48.88"	15.0 E	130	3641.9	116.7	UDT ESV BLD	
ESV:		Bearing [True]: 154.0° to 179.0° Bearing [Mag]: 139.0° to 164.0°				Arc Distance: Out to 110.0 NM Altitude: 17000.0 to 22000.0 ft		
11	UDT ESV POM POM [IFPA]	N34° 04' 42.20", W117° 47' 13.47"	15.0 E	40	1302.5	110.4	UDT ESV POM	
ESV:		Bearing [True]: 81.0° to 138.0° Bearing [Mag]: 66.0° to 123.0°				Arc Distance: Out to 81.0 NM Altitude: 12800.0 to 20000.0 ft		

DME DME Assessment Results for DSNEE5 path HIMDU_JWARD

DME Error



DME DME Assessment Results for DSNEE5 path MARUE_BREKE

Results Summary

Flyability:	Completed
DME/DME:	Completed - No Critical DMEs
Name:	Jeffery D-CTR Camara
Project File:	C:\Users\Jeffery D-CTR Camara\Targets Projects\SNA DSNEE STAR\DSNEE (RNAV).tgs
Output File:	D:\SNA DSNEE STAR\DSNEE STAR ESVs\KLGB [IFPA] DSNEE5 20201029_0608 PDT\MARUE_BREKE\KLGB DSNEE5 RNAV STAR MARUE BREKE 20201029_0608 PDT.pdf
Procedure Name:	DSNEE5
Software: DmeDmePlugin:	6.2.0
Date/Time:	10/29/2020 06:08 PDT
Databases:	DTED 0

Failures

No Failures

Warnings

No Warnings

Notes For Flight Check

None

Flight Plan

Name	Type	Lat/Lon	Altitude (ft)	VNAV Mode	Ground Speed (kts)	Turn Type	Leg Type
MARUE	WP	N35° 15' 23.00", W114° 52' 55.00"	17000	VNAV	280	FLY_BY	TF
SCROW	WP	N35° 08' 11.11", W115° 21' 01.56"	17000	VNAV	280	FLY_BY	TF
FJAYY	WP	N35° 01' 40.02", W115° 46' 11.86"	17000	VNAV	280	FLY_BY	TF
LRSON	WP	N34° 52' 59.88", W116° 19' 58.65"	17000	VNAV	280	FLY_BY	TF
GITRR	WP	N34° 41' 35.50", W116° 34' 29.32"	17000	VNAV	280	FLY_BY	TF
DUUNN	WP	N34° 30' 14.36", W116° 45' 35.29"	13000	VNAV	280	FLY_BY	TF
CARZZ	WP	N34° 20' 12.15", W116° 57' 13.91"	13000	VNAV	280	FLY_BY	TF
AASPN	WP	N34° 16' 05.53", W117° 01' 57.56"	10800	VNAV	280	FLY_BY	TF
KADYN	WP	N34° 10' 18.69", W117° 06' 08.00"	10800	VNAV	280	FLY_BY	TF
EROCK	WP	N33° 59' 48.10", W117° 11' 45.83"	9000	VNAV	280	FLY_BY	TF
LUQAS	WP	N33° 56' 04.25", W117° 16' 58.39"	8000	VNAV	280	FLY_BY	TF
DSNEE	WP	N33° 49' 05.48", W117° 26' 50.06"	8000	VNAV	220	FLY_BY	TF
MCKYE	WP	N33° 45' 49.59", W117° 37' 31.98"	7200	VNAV	220	FLY_BY	TF
MOUSS	WP	N33° 44' 59.22", W117° 40' 20.47"	6500	VNAV	220	FLY_BY	TF
GOOFY	WP	N33° 41' 48.56", W117° 51' 02.13"	4000	VNAV	220	FLY_BY	TF
PIBBB	WP	N33° 40' 28.61", W117° 55' 33.38"	4000	VNAV	220	FLY_BY	TF
LUVCI	WP	N33° 40' 30.41", W118° 03' 03.68"	3000	VNAV	220	FLY_BY	TF
QGATE	WP	N33° 42' 31.68", W118° 13' 22.02"	3000	VNAV	220	FLY_BY	TF
BREKE	WP	N33° 45' 46.07", W118° 14' 22.11"	3000	VNAV	220	FLY_BY	TF

DME DME Assessment Results for DSNEE5 path MARUE_BREKE

Flyability	
Flight Type:	RNAV_STAR
Selected Airport:	KLGB [IFPA]
Climb Gradient:	None assigned
Speeds:	200 Ground Speed to 11000 FT
	240 Ground Speed to 18000 FT
	260 Ground Speed to 24000 FT
	340 Ground Speed above 24000 FT
Descent During a Turn:	Allowed
VNAV Mode:	Flight Plan

DME/DME	
RNP:	RNP 2
Flight Mode:	Manual
Line of Sight (DTED Level 0 Max):	Evaluated
Inertial Drift:	Enabled
Initial Drift:	0.558 NM
INS Drift Rate:	8.0 NM/Hour
Range Mode:	OSV
RNP Edges:	Evaluated
Min DME Range:	3.0 NM
DME Types:	DME, VOR-DME, VORTAC
DME Include Angles:	30 to 150
Critical DMEs:	Allowed
DoD Facilities:	Included
Foreign Facilities:	Not included
High DMEs:	Included
Low DMEs:	Included
Terminal DMEs:	Included
Flight Check DMEs:	Not selected
Higher Altitudes:	Not Evaluated
Near Maximum Altitude:	Not Evaluated
Automatic ESVs:	Not enabled
Disabled DMEs:	None

DME DME Assessment Results for DSNEE5 path MARUE_BREKE

DME/DME (Continued)										
DMEs Used										
#	Name	Lat/Lon	MAGVAR	Range	Type	Source	Critical	Status	Time	Distance
1	DAG	N34° 57' 44.84", W116° 34' 41.40"	15.0 E	40	L	IFPA	NO	Enabled	28.8 %	30.5 %
2	PMD	N34° 37' 53.03", W118° 03' 49.76"	15.0 E	130	H	IFPA	NO	Enabled	16.3 %	17.3 %
3	POM	N34° 04' 42.20", W117° 47' 13.47"	15.0 E	40	L	IFPA	NO	Enabled	39.7 %	36.2 %
4	SMO	N34° 00' 37.53", W118° 27' 22.97"	15.0 E	40	L	IFPA	NO	Enabled	15 %	12.5 %
5	SLI	N33° 46' 59.88", W118° 03' 17.13"	15.0 E	40	L	IFPA	NO	Enabled	26.9 %	23.3 %
6	GFS	N35° 07' 52.12", W115° 10' 35.19"	15.0 E	40	L	IFPA	NO	Enabled	23.1 %	24.4 %
7	IPL	N32° 44' 55.92", W115° 30' 30.90"	14.0 E	130	H	IFPA	NO	Enabled	25.3 %	26.8 %
8	SXC	N33° 22' 30.20", W118° 25' 11.68"	15.0 E	40	L	IFPA	NO	Enabled	31.8 %	29.6 %
9	PKE	N34° 06' 07.10", W114° 40' 55.44"	15.0 E	130	H	IFPA	NO	Enabled	12.3 %	13 %
10	PDZ	N33° 55' 06.01", W117° 31' 47.99"	15.0 E	130	H	IFPA	NO	Enabled	18.3 %	19.2 %
11	HEC	N34° 47' 49.26", W116° 27' 46.52"	15.0 E	130	H	IFPA	NO	Enabled	23.7 %	25.1 %
12	TRM	N33° 37' 41.15", W116° 09' 36.70"	13.0 E	130	H	IFPA	NO	Enabled	1.8 %	1.9 %
13	EED	N34° 45' 57.62", W114° 28' 26.77"	15.0 E	130	H	IFPA	NO	Enabled	30 %	31.8 %
14	LAS	N36° 04' 46.93", W115° 09' 35.27"	15.0 E	130	H	IFPA	NO	Enabled	28.7 %	30.4 %
15	ELB	N33° 40' 33.71", W117° 43' 51.90"	14.0 E	25	T	IFPA	NO	Enabled	18.1 %	15.1 %
16	LAX	N33° 55' 59.34", W118° 25' 55.25"	15.0 E	130	H	IFPA	NO	Enabled	23.7 %	21 %
17	BLD	N35° 59' 44.84", W114° 51' 48.88"	15.0 E	130	H	IFPA	NO	Enabled	22.1 %	23.4 %
18	OCN	N33° 14' 26.28", W117° 25' 03.79"	15.0 E	130	H	IFPA	NO	Enabled	9.3 %	7.9 %

DME DME Assessment Results for DSNEE5 path MARUE_BREKE

Flight Check DME Selection						
Distance [NM]	Selected DMEs					Alternate
0.0	EED	GFS	LAS	PKE	BLD	
5.0	EED	GFS	PKE	LAS		
6.8	EED	GFS	LAS			
7.0	EED	GFS	PKE	LAS		
8.7	EED	GFS	LAS			
9.5	EED	GFS	BLD	LAS		
12.2	EED	GFS	PKE	LAS		
12.3	EED	GFS	BLD	LAS	PKE	
13.3	BLD	EED	LAS	PKE		
18.9	LAS	GFS	EED	PKE		
30.4	BLD	EED	LAS	GFS		
31.9	EED	LAS	GFS	HEC		
39.2	EED	LAS	BLD	GFS	HEC	
50.5	EED	LAS	BLD	DAG	GFS	
55.6	EED	LAS	DAG	BLD		
59.3	EED	LAS	DAG	HEC		
62.2	BLD	EED	DAG			
64.3	BLD	DAG	IPL	HEC		
68.7	BLD	DAG	IPL	HEC	EED	
69.0	BLD	DAG	IPL	HEC		
73.9	DAG	HEC	IPL			
74.3	DAG	HEC	PDZ	IPL		
75.0	DAG	HEC	BLD	IPL		
75.7	DAG	HEC	IPL			
76.5	DAG	HEC	PDZ	IPL		
77.0	DAG	HEC	IPL			
78.1	DAG	HEC	PDZ	IPL		
80.2	DAG	PDZ	IPL			
86.0	DAG	PDZ	EED	HEC		
86.1	DAG	PDZ	TRM	EED	HEC	
86.5	DAG	PDZ	IPL			
88.9	DAG	PDZ	IPL	HEC		
90.9	PDZ	TRM	HEC	DAG		
91.5	PDZ	TRM	HEC	IPL		
92.2	DAG	PDZ	IPL	HEC		
92.5	PDZ	TRM	HEC	IPL		
93.6	HEC	TRM	IPL			
94.6	IPL	HEC				
94.9	HEC	TRM	IPL			
95.4	IPL	HEC				
98.8	IPL	HEC	DAG			
99.1	PMD	DAG	HEC	IPL		
102.6	PMD	DAG	IPL			
116.4	PMD	IPL				
118.5	PMD	PDZ	IPL			
120.1	PMD	PDZ				
126.7	PMD	PDZ	SXC			
128.5	PMD	PDZ	SXC	POM		
130.6	PMD	PDZ	SXC	LAX	POM	
134.2	PMD	PDZ	SXC	POM		
134.5						
136.3	SXC	POM				
149.5	SXC	POM	LAX			
151.3	SXC	POM	SLI	LAX		
155.2	SXC	POM	PDZ	SLI	LAX	
158.7	OCN	SLI	POM	PDZ		

DME DME Assessment Results for DSNEE5 path MARUE_BREKE

Flight Check DME Selection						
Distance [NM]	Selected DMEs					Alternate
160.6	SXC	PDZ	POM	SLI	LAX	
160.8	OCN	SLI	PDZ	POM		
162.1	OCN	SLI	POM			
163.6	POM	ELB	OCN	SLI		
164.6	POM	ELB	SXC	SLI	LAX	
165.9	POM	ELB	OCN	SLI		
171.5	LAX	ELB	POM	SLI	OCN	
171.8	SXC	POM	SLI			
172.1	POM	SLI	OCN	ELB		
172.9	SXC	OCN	POM	SLI		
173.1	SXC	POM	SLI			
173.6	POM	SLI				
174.8	POM	SLI	LAX			
175.9	POM	SLI	SXC	ELB	LAX	SMO
177.0	POM	SLI	LAX	SXC		
177.5	POM	SLI	SXC			
178.2	POM	SLI	LAX	SXC		
179.4	POM	SLI	LAX	ELB	SXC	
190.5	SMO	SXC	LAX	POM	ELB	
200.2	SMO	SLI	POM	LAX	SXC	

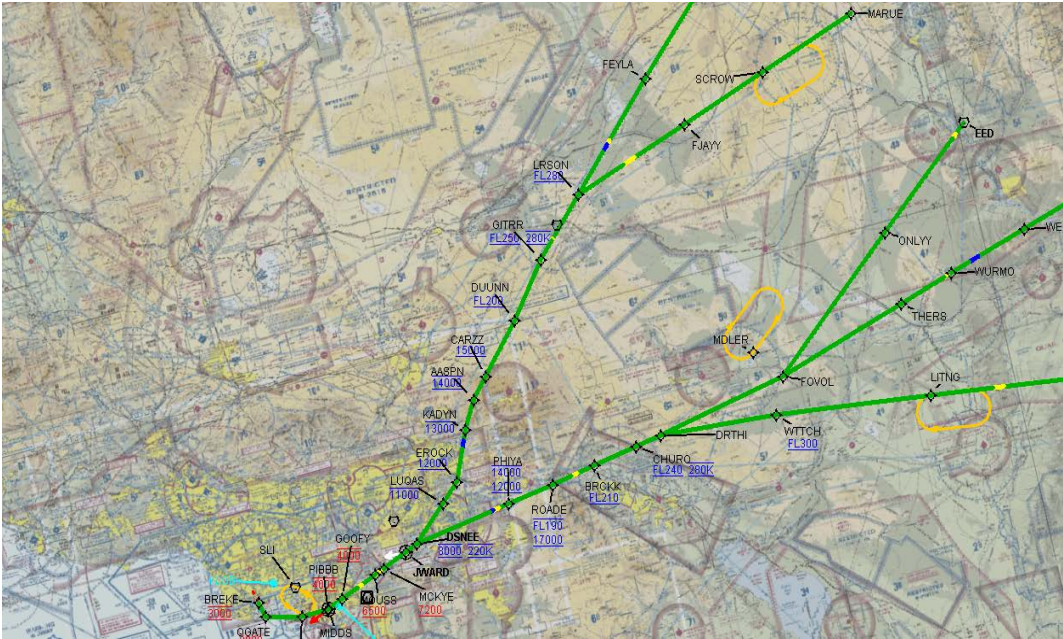
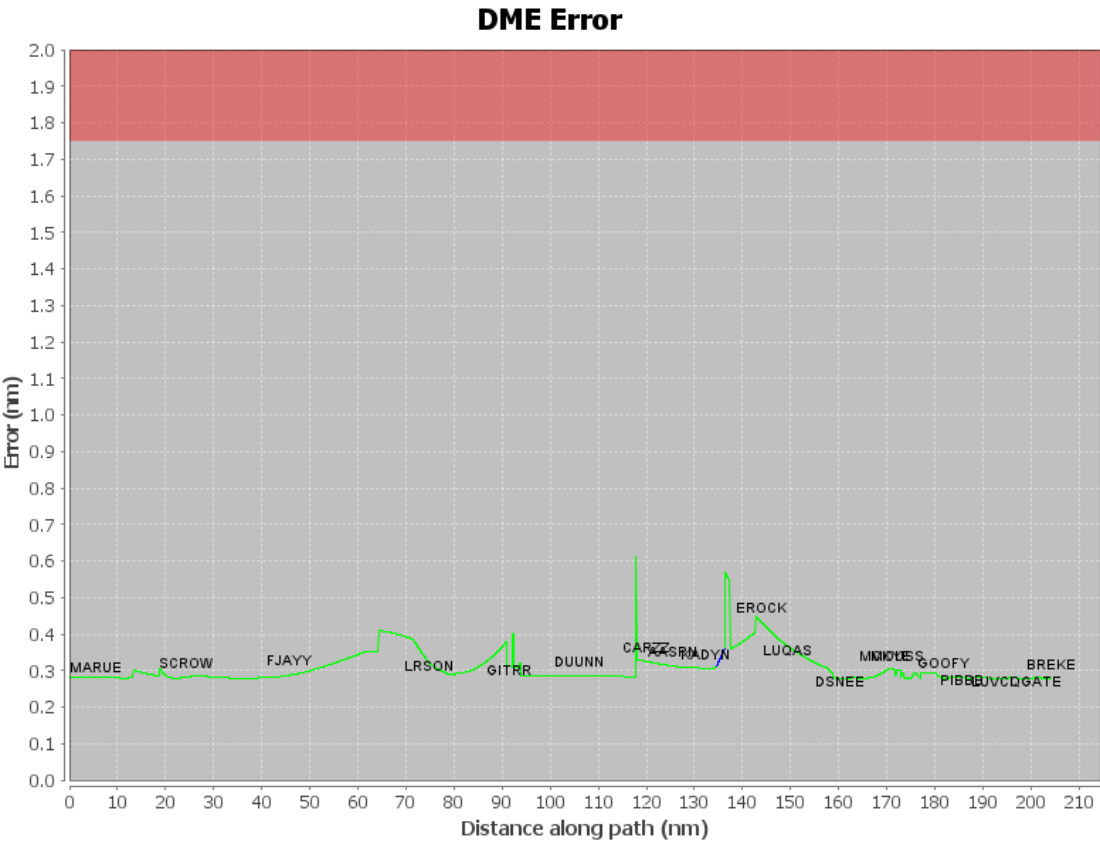
Inertial Drift Segments			
#	Start Location	End Location	Length [NM]
1	N34° 08' 15.15", W117° 07' 14.31"	N34° 06' 37.16", W117° 08' 06.86"	1.785

Available DMEs by Waypoints		
Waypoint Before	Waypoint After	DME List
MARUE	SCROW	EED, GFS, PKE, BLD, LAS
SCROW	FJAYY	EED, GFS, HEC, PKE, BLD, LAS
FJAYY	LRSON	IPL, EED, GFS, HEC, PDZ, BLD, DAG, LAS
LRSON	GITRR	IPL, EED, HEC, PDZ, DAG, BLD, TRM
GITRR	DUUNN	IPL, PMD, PDZ, HEC, DAG, TRM
DUUNN	CARZZ	IPL, PMD, PDZ, DAG
CARZZ	AASPN	IPL, PMD, PDZ
AASPN	KADYN	LAX, PMD, PDZ, SXC, POM
KADYN	EROCK	LAX, PMD, PDZ, POM, SXC
EROCK	LUQAS	LAX, SXC, POM
LUQAS	DSNEE	SLI, LAX, PDZ, OCN, SXC, POM
DSNEE	MCKYE	SLI, LAX, PDZ, ELB, OCN, POM, SXC
MCKYE	MOUSS	SLI, LAX, ELB, OCN, POM, SXC
MOUSS	GOOFY	SLI, LAX, SMO, ELB, OCN, POM, SXC
GOOFY	PIBBB	SLI, LAX, SMO, ELB, OCN, POM, SXC
PIBBB	LUVCI	SLI, LAX, SMO, ELB, OCN, POM, SXC
LUVCI	QGATE	SLI, LAX, SMO, ELB, POM, SXC
QGATE	BREKE	SLI, LAX, SMO, POM, SXC

DME DME Assessment Results for DSNEE5 path MARUE_BREKE

User Data Files								
#	File Name							
1	UserDMEs_KLGB DSNEE2 STAR DSNEE MIDDs 20170410_2241.udt							
User DMEs								
#	Name	Lat/Lon	MAGVAR	Range	Elevation [ft]	Frequency	Replaces	Status
1	UDT ESV IPL IPL [IFPA]	N32° 44' 55.92", W115° 30' 30.90"	14.0 E	130	-3.3	115.9	UDT ESV IPL	
ESV:		Bearing [True]: 320.0° to 347.0° Bearing [Mag]: 306.0° to 333.0°				Arc Distance: Out to 140.0 NM Altitude: 12900.0 to 45000.0 ft		
2	BLD FAA 702031-48 BLD [IFPA]	N35° 59' 44.84", W114° 51' 48.88"	15.0 E	130	3641.9	116.7	BLD FAA 702031-48	
ESV:		Bearing [True]: 177.0° to 230.0° Bearing [Mag]: 162.0° to 215.0°				Arc Distance: Out to 95.0 NM Altitude: 17000.0 to 20000.0 ft		
3	UDT ESV SXC SXC [IFPA]	N33° 22' 30.20", W118° 25' 11.68"	15.0 E	40	2126	111.4	UDT ESV SXC	
ESV:		Bearing [True]: 47.0° to 80.0° Bearing [Mag]: 32.0° to 65.0°				Arc Distance: Out to 88.0 NM Altitude: 5800.0 to 22000.0 ft		
4	UDT ESV LAX LAX [IFPA]	N33° 55' 59.34", W118° 25' 55.25"	15.0 E	130	188.4	113.6	UDT ESV LAX	
ESV:		Bearing [True]: 74.0° to 107.0° Bearing [Mag]: 59.0° to 92.0°				Arc Distance: Out to 103.0 NM Altitude: 6000.0 to 20000.0 ft		
5	UDT ESV JLI JLI [IFPA]	N33° 08' 25.65", W116° 35' 09.37"	15.0 E	40	5560	114.0	UDT ESV JLI	
ESV:		Bearing [True]: 323.0° to 24.0° Bearing [Mag]: 308.0° to 9.0°				Arc Distance: Out to 53.0 NM Altitude: 8000.0 to 24000.0 ft		
6	UDT ESV BLD BLD [IFPA]	N35° 59' 44.84", W114° 51' 48.88"	15.0 E	130	3641.9	116.7	UDT ESV BLD	
ESV:		Bearing [True]: 219.0° to 237.0° Bearing [Mag]: 204.0° to 222.0°				Arc Distance: Out to 99.0 NM Altitude: 17000.0 to 20000.0 ft		
7	BLD FAA 702031-36 BLD [IFPA]	N35° 59' 44.84", W114° 51' 48.88"	15.0 E	130	3641.9	116.7	BLD FAA 702031-36	
ESV:		Bearing [True]: 154.0° to 179.0° Bearing [Mag]: 139.0° to 164.0°				Arc Distance: Out to 110.0 NM Altitude: 17000.0 to 22000.0 ft		
8	UDT ESV IGM IGM [IFPA]	N35° 15' 37.85", W113° 56' 02.69"	15.0 E	40	3428.5	108.8	UDT ESV IGM	
ESV:		Bearing [True]: 214.0° to 233.0° Bearing [Mag]: 199.0° to 218.0°				Arc Distance: Out to 77.0 NM Altitude: 17000.0 to 22000.0 ft		
9	UDT ESV PMD PMD [IFPA]	N34° 37' 53.03", W118° 03' 49.76"	15.0 E	130	2509.8	114.5	UDT ESV PMD	
ESV:		Bearing [True]: 86.0° to 125.0° Bearing [Mag]: 71.0° to 110.0°				Arc Distance: Out to 72.0 NM Altitude: 9700.0 to 18000.0 ft		
10	UDT ESV BLD BLD [IFPA]	N35° 59' 44.84", W114° 51' 48.88"	15.0 E	130	3641.9	116.7	UDT ESV BLD	
ESV:		Bearing [True]: 154.0° to 179.0° Bearing [Mag]: 139.0° to 164.0°				Arc Distance: Out to 110.0 NM Altitude: 17000.0 to 22000.0 ft		
11	UDT ESV POM POM [IFPA]	N34° 04' 42.20", W117° 47' 13.47"	15.0 E	40	1302.5	110.4	UDT ESV POM	
ESV:		Bearing [True]: 81.0° to 138.0° Bearing [Mag]: 66.0° to 123.0°				Arc Distance: Out to 81.0 NM Altitude: 12800.0 to 20000.0 ft		

DME DME Assessment Results for DSNEE5 path MARUE_BREKE



DME DME Assessment Results for DSNEE5 path NATEE_LRSON

Results Summary

Flyability:	Completed
DME/DME:	Completed - No Critical DMEs
Name:	Jeffery D-CTR Camara
Project File:	C:\Users\Jeffery D-CTR Camara\Targets Projects\SNA DSNEE STAR\DSNEE (RNAV).tgs
Output File:	D:\SNA DSNEE STAR\DSNEE STAR ESVs\KLGB [IFPA] DSNEE5 20201029_0608 PDT\NATEE_LRSON\KLGB DSNEE5 RNAV STAR NATEE LRSON 20201029_0608 PDT.pdf
Procedure Name:	DSNEE5
Software: DmeDmePlugin:	6.2.0
Date/Time:	10/29/2020 06:08 PDT
Databases:	DTED 0

Failures

No Failures

Warnings

No Warnings

Notes For Flight Check

None

Flight Plan

Name	Type	Lat/Lon	Altitude (ft)	VNAV Mode	Ground Speed (kts)	Turn Type	Leg Type
NATEE	WP	N35° 37' 14.00", W115° 22' 26.00"	17000	VNAV	280	FLY_BY	TF
FEYLA	WP	N35° 13' 36.52", W115° 54' 04.77"	17000	VNAV	280	FLY_BY	TF
LRSON	WP	N34° 52' 59.88", W116° 19' 58.65"	17000	VNAV	280	FLY_BY	TF

Flyability

Flight Type:	RNAV_STAR
Selected Airport:	KLGB [IFPA]
Climb Gradient:	None assigned
Speeds:	200 Ground Speed to 11000 FT
	240 Ground Speed to 18000 FT
	260 Ground Speed to 24000 FT
	340 Ground Speed above 24000 FT
Descent During a Turn:	Allowed
VNAV Mode:	Flight Plan

DME DME Assessment Results for DSNEE5 path NATEE_LRSON

DME/DME	
RNP:	RNP 2
Flight Mode:	Manual
Line of Sight (DTED Level 0 Max):	Evaluated
Inertial Drift:	Enabled
Initial Drift:	0.558 NM
INS Drift Rate:	8.0 NM/Hour
Range Mode:	OSV
RNP Edges:	Evaluated
Min DME Range:	3.0 NM
DME Types:	DME, VOR-DME, VORTAC
DME Include Angles:	30 to 150
Critical DMEs:	Allowed
DoD Facilities:	Included
Foreign Facilities:	Not included
High DMEs:	Included
Low DMEs:	Included
Terminal DMEs:	Included
Flight Check DMEs:	Not selected
Higher Altitudes:	Not Evaluated
Near Maximum Altitude:	Not Evaluated
Automatic ESVs:	Not enabled
Disabled DMEs:	None

DME/DME (Continued)										
DMEs Used										
#	Name	Lat/Lon	MAGVAR	Range	Type	Source	Critical	Status	Time	Distance
1	HEC	N34° 47' 49.26", W116° 27' 46.52"	15.0 E	130	H	IFPA	NO	Enabled	45.9 %	45.9 %
2	DAG	N34° 57' 44.84", W116° 34' 41.40"	15.0 E	40	L	IFPA	NO	Enabled	32.5 %	32.5 %
3	EED	N34° 45' 57.62", W114° 28' 26.77"	15.0 E	130	H	IFPA	NO	Enabled	79.9 %	79.9 %
4	LAS	N36° 04' 46.93", W115° 09' 35.27"	15.0 E	130	H	IFPA	NO	Enabled	62.5 %	62.5 %
5	GOG	N35° 53' 39.30", W115° 29' 45.90"	0.0 E	130	H	IFPA	NO	Enabled	43.1 %	43.1 %
6	BLD	N35° 59' 44.84", W114° 51' 48.88"	15.0 E	130	H	IFPA	NO	Enabled	72.6 %	72.6 %
7	GFS	N35° 07' 52.12", W115° 10' 35.19"	15.0 E	40	L	IFPA	NO	Enabled	23.9 %	23.9 %
8	IPL	N32° 44' 55.92", W115° 30' 30.90"	14.0 E	130	H	IFPA	NO	Enabled	6.5 %	6.5 %
9	PKE	N34° 06' 07.10", W114° 40' 55.44"	15.0 E	130	H	IFPA	NO	Enabled	7.2 %	7.2 %

DME DME Assessment Results for DSNEE5 path NATEE_LRSON

Flight Check DME Selection						
Distance [NM]	Selected DMEs					Alternate
0.0	EED	BLD	GOG	GFS	LAS	
2.4	EED	BLD	LAS	GOG		
3.0	EED	BLD	LAS	GOG	PKE	
5.2	EED	BLD	LAS	GOG		
12.7	EED	LAS	GOG	PKE		
15.4	EED	LAS	BLD	GOG		
23.1	LAS	GFS	GOG	EED		
27.9	LAS	GFS	EED	BLD		
33.1	EED	LAS	GFS	HEC	DAG	
36.3	EED	LAS	HEC	BLD	DAG	
40.4	EED	HEC	BLD	DAG		
42.1	EED	HEC	BLD			
50.7	EED	HEC	BLD	DAG		
51.7						
53.5	DAG	HEC				
58.4	DAG	HEC	BLD			
60.4	DAG	HEC	BLD	IPL		

Inertial Drift Segments			
#	Start Location	End Location	Length [NM]
1	N35° 01' 59.37", W116° 08' 43.23"	N35° 00' 44.68", W116° 10' 16.96"	1.7862

Available DMEs by Waypoints		
Waypoint Before	Waypoint After	DME List
NATEE	FEYLA	EED, GFS, HEC, BLD, PKE, DAG, GOG, LAS
FEYLA	LRSON	IPL, EED, GFS, HEC, DAG, BLD, LAS

DME DME Assessment Results for DSNEE5 path NATEE_LRSON

User Data Files								
#	File Name							
1	UserDMEs_KLGB DSNEE2 STAR DSNEE MIDDs 20170410_2241.udt							
User DMEs								
#	Name	Lat/Lon	MAGVAR	Range	Elevation [ft]	Frequency	Replaces	Status
1	UDT ESV IPL IPL [IFPA]	N32° 44' 55.92", W115° 30' 30.90"	14.0 E	130	-3.3	115.9	UDT ESV IPL	
ESV:		Bearing [True]: 320.0° to 347.0° Bearing [Mag]: 306.0° to 333.0°				Arc Distance: Out to 140.0 NM Altitude: 12900.0 to 45000.0 ft		
2	BLD FAA 702031-48 BLD [IFPA]	N35° 59' 44.84", W114° 51' 48.88"	15.0 E	130	3641.9	116.7	BLD FAA 702031-48	
ESV:		Bearing [True]: 177.0° to 230.0° Bearing [Mag]: 162.0° to 215.0°				Arc Distance: Out to 95.0 NM Altitude: 17000.0 to 20000.0 ft		
3	UDT ESV SXC SXC [IFPA]	N33° 22' 30.20", W118° 25' 11.68"	15.0 E	40	2126	111.4	UDT ESV SXC	
ESV:		Bearing [True]: 47.0° to 80.0° Bearing [Mag]: 32.0° to 65.0°				Arc Distance: Out to 88.0 NM Altitude: 5800.0 to 22000.0 ft		
4	UDT ESV LAX LAX [IFPA]	N33° 55' 59.34", W118° 25' 55.25"	15.0 E	130	188.4	113.6	UDT ESV LAX	
ESV:		Bearing [True]: 74.0° to 107.0° Bearing [Mag]: 59.0° to 92.0°				Arc Distance: Out to 103.0 NM Altitude: 6000.0 to 20000.0 ft		
5	UDT ESV JLI JLI [IFPA]	N33° 08' 25.65", W116° 35' 09.37"	15.0 E	40	5560	114.0	UDT ESV JLI	
ESV:		Bearing [True]: 323.0° to 24.0° Bearing [Mag]: 308.0° to 9.0°				Arc Distance: Out to 53.0 NM Altitude: 8000.0 to 24000.0 ft		
6	UDT ESV BLD BLD [IFPA]	N35° 59' 44.84", W114° 51' 48.88"	15.0 E	130	3641.9	116.7	UDT ESV BLD	
ESV:		Bearing [True]: 219.0° to 237.0° Bearing [Mag]: 204.0° to 222.0°				Arc Distance: Out to 99.0 NM Altitude: 17000.0 to 20000.0 ft		
7	BLD FAA 702031-36 BLD [IFPA]	N35° 59' 44.84", W114° 51' 48.88"	15.0 E	130	3641.9	116.7	BLD FAA 702031-36	
ESV:		Bearing [True]: 154.0° to 179.0° Bearing [Mag]: 139.0° to 164.0°				Arc Distance: Out to 110.0 NM Altitude: 17000.0 to 22000.0 ft		
8	UDT ESV IGM IGM [IFPA]	N35° 15' 37.85", W113° 56' 02.69"	15.0 E	40	3428.5	108.8	UDT ESV IGM	
ESV:		Bearing [True]: 214.0° to 233.0° Bearing [Mag]: 199.0° to 218.0°				Arc Distance: Out to 77.0 NM Altitude: 17000.0 to 22000.0 ft		
9	UDT ESV PMD PMD [IFPA]	N34° 37' 53.03", W118° 03' 49.76"	15.0 E	130	2509.8	114.5	UDT ESV PMD	
ESV:		Bearing [True]: 86.0° to 125.0° Bearing [Mag]: 71.0° to 110.0°				Arc Distance: Out to 72.0 NM Altitude: 9700.0 to 18000.0 ft		
10	UDT ESV BLD BLD [IFPA]	N35° 59' 44.84", W114° 51' 48.88"	15.0 E	130	3641.9	116.7	UDT ESV BLD	
ESV:		Bearing [True]: 154.0° to 179.0° Bearing [Mag]: 139.0° to 164.0°				Arc Distance: Out to 110.0 NM Altitude: 17000.0 to 22000.0 ft		
11	UDT ESV POM POM [IFPA]	N34° 04' 42.20", W117° 47' 13.47"	15.0 E	40	1302.5	110.4	UDT ESV POM	
ESV:		Bearing [True]: 81.0° to 138.0° Bearing [Mag]: 66.0° to 123.0°				Arc Distance: Out to 81.0 NM Altitude: 12800.0 to 20000.0 ft		

DME DME Assessment Results for DSNEE5 path NATEE_LRSON

DME Error

