

Flight Procedures Cover Page	Task Action: FLIGHT CHECK	Task Type: IAP	Estimated Chart Date: 08/07/2025	APWS Task ID: 97D1356458884D9C925BCAA28B1C8B00	APWS Project ID: 24B22E7DB7C642DD9469F6011D651816
Procedure: RNAV (GPS) RWY 32 AMDT 2		Enroute: NO	Specialist: Cyrus, Theron		Agreement Number:
Airport ID: KSTP			Airport City: ST PAUL		State: MN
Facility ID:	Facility Type:	Flight Inspection Remark Type: New FC Slot			
<div>Procedure Comments: VOR MON: MSP DECOMMISSIONING. ACTIVE DATA USED FOR KSTP/RUNWAYS. CONTACT CASIMIR TABAKA 405 202 7857.</div> <div>QUALITY 21 CHECKED</div> <div>QUALITY 38 CHECKED</div>					

RNAV (GPS) RWY 32

ST PAUL DOWNTOWN HOLMAN FLD (STP)




MISSED APPROACH: Climb to 1400 then climbing right turn to 3000 direct WHISK and hold.



Procedure NA for arrivals at PRESS on V2-97 southeast bound and V26 eastbound.

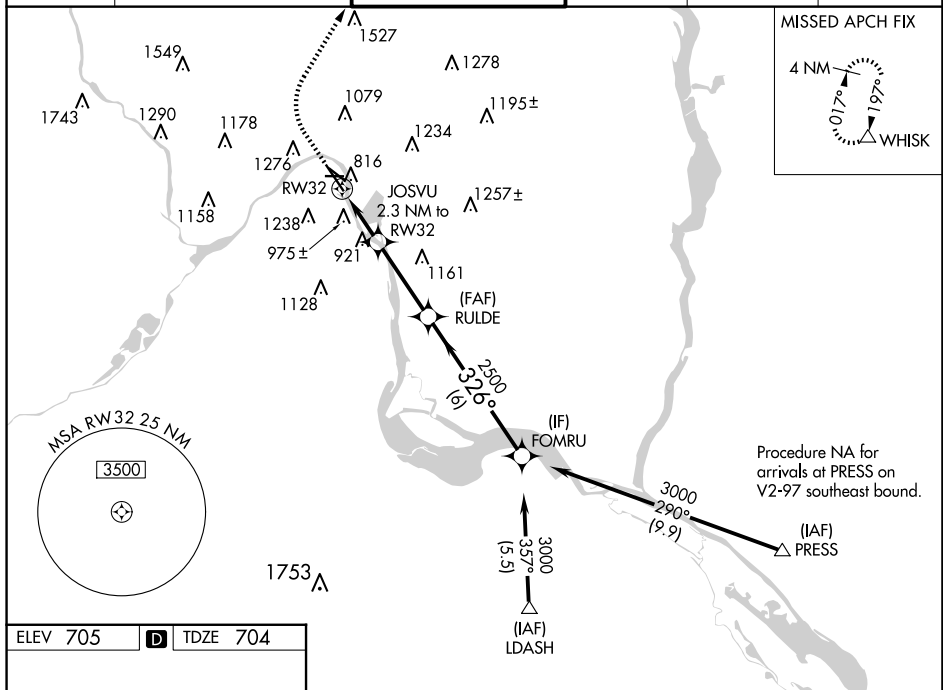
1400 ↑	3000 ↷	WHISK △								
CATEGORY			A		B		C		D	
LPV DA			1031/50 327 (400-1)							
LNAV/VNAV DA			1240-1½ 536 (600-1½)							
LNAV MDA			1240/55 536 (600-1)				1240-1½ 536 (600-1½)			
CIRCLING			1580-1¼ 875 (900-1¼)				1580-2½ 875 (900-2½)		1600-3 895 (900-3)	

RNAV (GPS) RWY 32
ST PAUL DOWNTOWN HOLMAN FLD (STP)

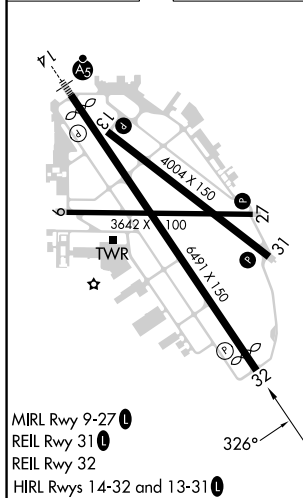
	Rwy 32 helicopter visibility reduction below $\frac{3}{4}$ SM NA.
	For uncompensated Baro-VNAV systems, LNAV/VNAV NA
	below -21°C or above 54°C.

MISSED APPROACH: Climb to 1400 then climbing right turn to 3000 direct WHISK and hold.

ATIS 118.35	MINNEAPOLIS APP CON 121.2 335.65	ST. PAUL TOWER ★ 119.1(CTAF) 0 257.8	GND CON 121.675	CLNC DEL 121.675	UNICOM 122.95
-----------------------	--	--	---------------------------	----------------------------	-------------------------



ELEV 705	D	TDZE 704
----------	----------	----------



1400 ↑	3000 ↗	WHISK △				
CATEGORY	A	B	C	D		
LPV DA	1031/50 327 (400-1)					
LNAV/VNAV	1258-1½ 554 (600-1½)					
LNAV MDA	1240/55	536 (600-1)	1240-1½	536 (600-1½)		
CIRCLING	1580-1¼	875 (900-1¼)	1580-2½ 875 (900-2½)	1580-2¾ 875 (900-2¾)		

ST PAUL, MINNESOTA
Amdt 1A 17JUN21

ST PAUL DOWNTOWN HOLMAN FLD (STP)
RNAV (GPS) RWY 32

