

| | | | | | |
|--|-------------------------|--------------------------------|-------------------------------------|---|--|
| Flight Procedures Cover Page | Task Action: P-NOTAM | Task Type: IAP | Estimated Chart Date: 11/04/2021 | APWS Task ID: 97341BE58D4B42CE89B78C28996A6C68 | APWS Project ID: 12577A4E206549B1882FB0629DC74C3D |
| Procedure: RNAV (GPS) RWY 18 AMDT 1B | | Enroute: NO | Specialist: Copeland, Guy | | Agreement Number: |
| Airport ID: KEUF | | | Airport City: EUFAULA | | State: AL |
| Facility ID: | Facility Type: | Flight Inspection Remark Type: | | | |
| <div> <div> Procedure Comments: P-NOTAM This Cancels FDC 9/9386 Order 8260.3, Chapter 2, New Circling Criteria Applied Contact Dave Teffeteller at 202-267-5177 </div> <div> <div>QUALITY 26 CHECKED</div> <div>QUALITY 45 CHECKED</div> </div> </div> | | | | | |

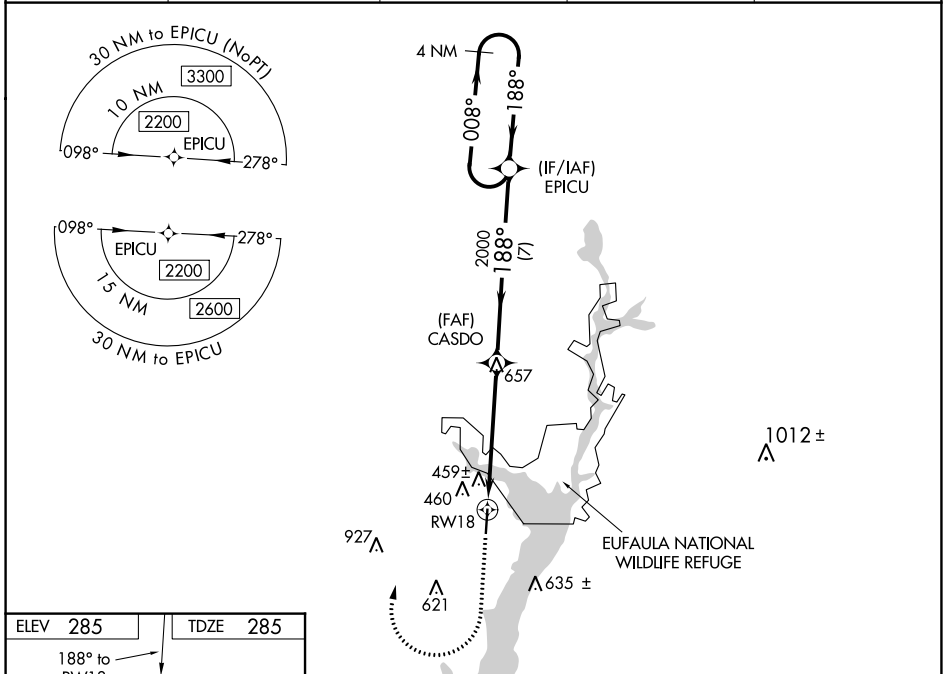
| | | | |
|--|------------------------|-----------------------------|---|
| WAAS CH 86723 W18A | APP CRS 188° | Rwy Idg TDZE Apt Elev | 5000 285 285 |
|--|------------------------|-----------------------------|---|

RNAV (GPS) RWY 18
WEEDON FIELD (EUF)

⚠ DME/DME RNP-0.3 NA. Baro-VNAV NA. Use Clayton altimeter setting; when not received, use Columbus, GA altimeter setting and increase all DA 33 feet and all MDA 40 feet; increase LPV all Cats and LNAV Cats C and D and Circling Cat C visibility $\frac{1}{8}$ mile and Circling D visibility $\frac{1}{4}$ mile.

⚠ NA MISSED APPROACH: Climb to 1300 then climbing right turn to 2200 direct EPICU and hold.

| | | | | |
|------------------------|------------------------------|---|---------------------------------|--|
| ASOS 128.325 | 11A AWOS-3 118.775 | ATLANTA APP CON ★ 125.5 323.1 | CLNC DEL 134.25 339.8 | UNICOM 122.8 (CTAF) 📶 |
|------------------------|------------------------------|---|---------------------------------|--|



MIRL Rwy 18-36 **1**

VGSI and RNAV glidepath not coincident (VGSI Angle 3.00/TCH 26).

EPICU

008° → 2200

← 188°

CASDO 2000

RW18

5.3 NM

7 NM

GP 3.00° TCH 40

| CATEGORY | A | B | C | D |
|--------------|---------------------|---|---------------------|----------------------|
| LPV DA | 599-1 314 (400-1) | | | |
| LNAV/VNAV DA | 706-1½ 421 (500-1½) | | | |
| LNAV MDA | 940-1 655 (700-1) | | 940-1⅞ 655 (700-1⅞) | |
| CIRCLING | 940-1 655 (700-1) | | 940-1⅞ 655 (700-1⅞) | 1000-2¼ 715 (800-2¼) |

