

Flight Procedures Cover Page	Task Action: FLIGHT CHECK	Task Type: IAP	Estimated Chart Date: 08/12/2021	APWS Task ID: 96D9BB40625543A682F0A586CB8901CC	APWS Project ID: 7864F9C94B8644A09AAFB04553432BA0
Procedure: RNAV (GPS) RWY 29 AMDT 2B		Enroute: NO	Specialist: Johnsen, Daniel		Agreement Number:
Airport ID: KLMO	Airport Name: VANCE BRAND		Airport City: LONGMONT		State: CO
Facility ID:	Facility Type:	Flight Inspection Remark Type: New FC Slot			
<p><b>Procedure Comments:</b></p> <p>Active data used for KLMO airport and runways.</p> <p>*No 8260-9 documentation available for Amdt 2.</p> <p>* Known changes to controlling obstacles: – Circling CAT C changed to 5559 MSL TREE (correction to NOTAM obstacle).</p> <p>* Unknown changes to controlling obstacles: – Initial WOLTS to FIMUR 6260 MSL Tower (08-000677). – Initial FIPSS to FIMUR 5570 MSL AAO. – LPV and LNAV/VNAV All Surfaces Clear. – Circling CAT A 5237 MSL TREE (08-045845). – Circling CAT B 5272 MSL TREE (08-036227). – Circling CAT D 6180 AAO. – Missed Approach Level Surface 5860 MSL AAO.</p> <p>Cancels NOTAM FDC 9/1173.</p> <p>Contact Jason Kretschmer, AJV-A421, 405-954-4019.</p> <div style="text-align: right;"> <p><i>Digitally signed by</i>  <b>JASON KRETSCHMER</b>  Jan 06, 2021</p> </div>					

QUALITY  
15  
CHECKED

QUALITY  
8  
CHECKED

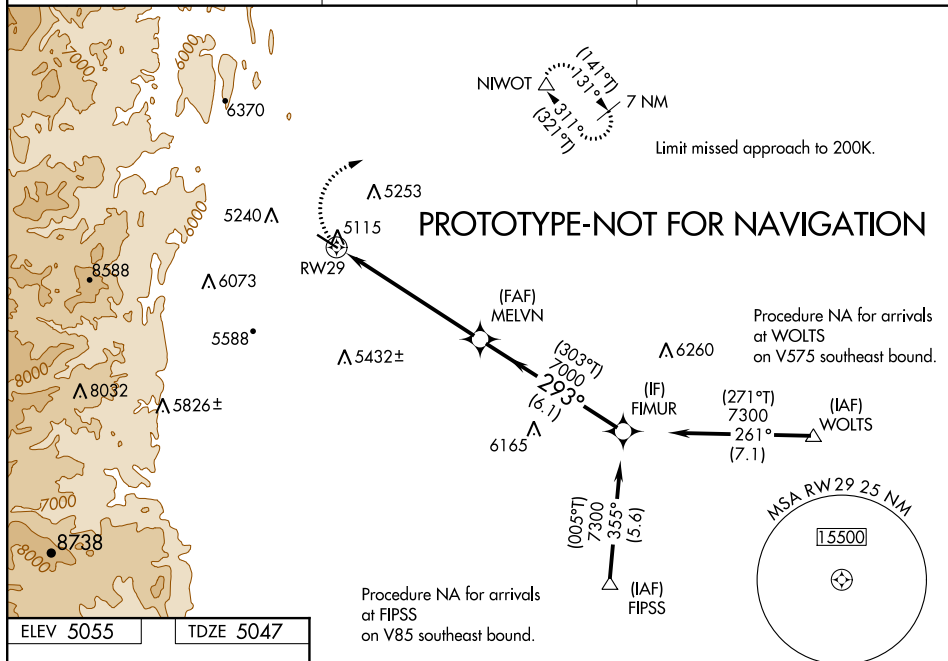
<b>FIPC BASIC FORM</b>							
<b>PROCEDURE:</b> RNAV (GPS) RWY 29 AMDT 2B			<b>AIRPORT NAME:</b> VANCE BRAND		<b>AIRPORT ID:</b> KLMO	<b>SPECIAL CONTROL NO:</b> SG-05-244-21	
<b>FAC ID:</b> KLMO29.02		<b>CITY:</b> LONGMONT			<b>ST:</b> CO	<b>ORIG CHART DATE:</b> 08/12/2021	
<b>DFL TYPE:</b> PROC/S	<b>THIRD PARTY:</b> <input type="checkbox"/> YES	<b>EST. TIME ON SITE:</b> 0.4	<b>REIMB. NUMBER:</b>		<b>PTS TASK ID:</b>		
<b>PREFLIGHT NOTES</b>							
<b>REVIEWER:</b>					<b>DATE:</b>		
<b>COMMENTS:</b>					<b>CHECK ONE:</b>		
					<input type="checkbox"/> FLT CK REQ <input type="checkbox"/> NFCR <input type="checkbox"/> REJECT		
							<b>YES</b>
					<b>CPV COMPLETE?</b>		<b>X</b>
<b>PROCEDURE RESULTS</b>							
<b>INSPECTION DATE:</b> 06/28/2021		<b>CREW #:</b> VN239	<b>N #:</b> N86	<b>INSTRUMENT PROCEDURE STATUS:</b> <input checked="" type="checkbox"/> SAT <input type="checkbox"/> SAT W/CHANGES <input type="checkbox"/> UNSAT		<b>ARINC CODING:</b> <input type="checkbox"/> SAT <input checked="" type="checkbox"/> SAT/GOLD <input type="checkbox"/> UNSAT	
<b>FLIGHT INSPECTOR SIGNATURE:</b> daniel stricker @ 06/28/2021 20:02			<b>PRINTED NAME:</b> STRICKER, DANIEL EDWARD				<b>NOTAM INITIATED?</b> <input type="checkbox"/> YES <input checked="" type="checkbox"/> NO
<b>FLIGHT INSPECTOR REMARKS:</b> Gold standard.							
<b>IN-FLIGHT OBSTACLE REPORT</b>							
<b>OBSTRUCTION ID #:</b>	<b>COORDINATES OR LOCATION:</b>		<b>GNSS ALTITUDE (MSL):</b>		<b>BAROMETRIC ALTITUDE (MSL):</b>		<b>HEIGHT ABOVE GROUND LEVEL:</b>

FIG

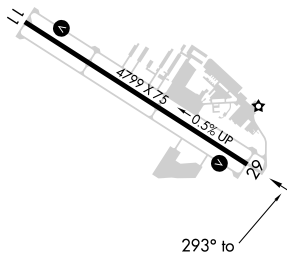
# RNAV (GPS) RWY 29

**T**  
**A** For uncompensated Baro-VNAV systems, procedure NA below -25°C or above 54°C.

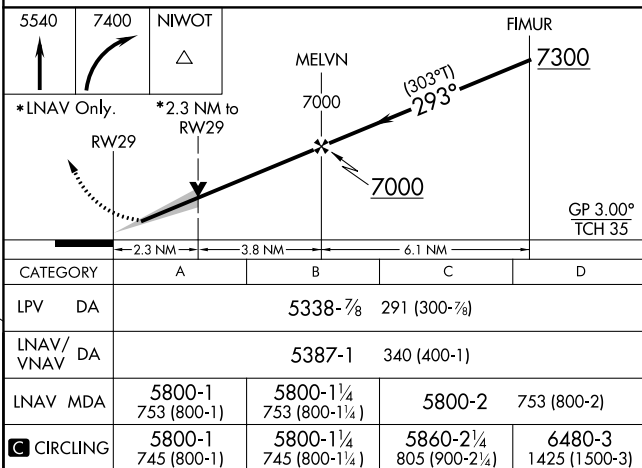
**MISSED APPROACH:** Climb to 5540 then climbing right turn to 7400 direct NIWOT and hold, continue climb-in-hold to 7400.

UNICOM  
122.975 (CTAF) **L**

TDZE 5047



Amdt 2B FIG



RNAV (GPS) RWY 29

40°10'N-105°10'W

WAAS CH <b>86834</b> <b>W29A</b>	APP CRS <b>293°</b>	Rwy Idg <b>4799</b> TDZE <b>5047</b> Apt Elev <b>5055</b>
--	------------------------	---

OLD

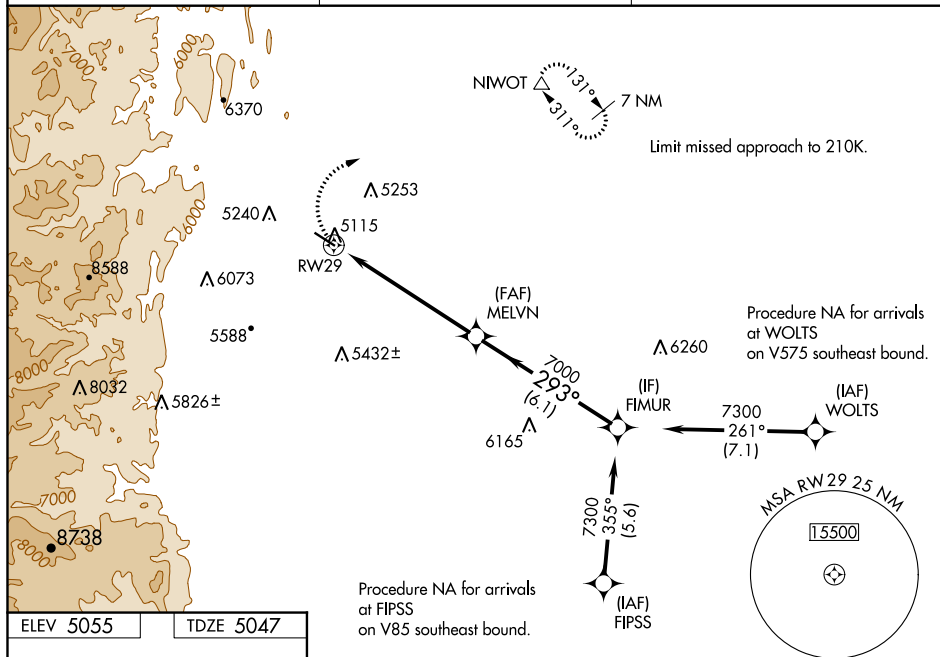
RNAV (GPS) RWY 29  
VANCE BRAND (LMO)

**⚠** Baro-VNAV NA when using Denver Intl altimeter setting. For uncompensated Baro-VNAV systems, LNAV/VNAV NA below -25°C (-13°F) or above 52°C (127°F). DME/DME RNP-0.3 NA. When local altimeter setting not received, use Denver Intl altimeter setting and increase all DA and MDA 120 feet, increase LPV all Cats visibility ¾ mile, LNAV/VNAV all Cats visibility ½ mile, LNAV Cat A and Circling Cat A and C visibility ¼ mile.

**MISSED APPROACH:** Climbing right turn to 7400 direct NIWOT and hold, continue climb-in-hold to 7400.

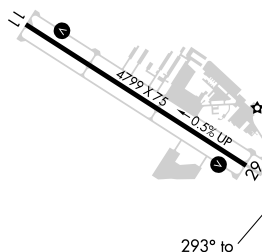
AWOS-3  
120.0

DENVER APP CON  
126.1 360.75

UNICOM  
122.975 (CTAF) **L**

ELEV 5055

TDZE 5047

MIRL Rwy 11-29 **L**

LONGMONT, COLORADO

Amdt 2A 01MAY14

40°10'N-105°10'W

VANCE BRAND (LMO)

RNAV (GPS) RWY 29

Figure 1: Example of a 4-segment RNAV approach. The diagram shows a 4-segment RNAV approach with segments A, B, C, and D. Segment A is a 2.3 NM climb from RW29 to 7000. Segment B is a 3.8 NM climb from 7000 to 7300. Segment C is a 6.1 NM climb from 7300 to 7300. Segment D is a 3.00° climb from 7300 to 7300. The total distance is 12.2 NM. The approach is labeled 'RNAV 4' and 'RNAV 4'.

SW-1, 18 JUN 2020 to 16 JUL 2020



