

DME DME Assessment Results for ENDED2 path ENDED_LACEN

Results Summary

Flyability:	Completed
DME/DME:	Completed - No Critical DMEs
Name:	Mark J-CTR Dillon
Project File:	C:\Users\mark j-ctr dillon\Documents\TARGETS PROJECTS\PIE TPA\FOXAR_PIE TPA\KPIE ENDED2 (RNAV) SID\DME\KPIE ENDED2 (RNAV) SID DME 230509.tgs
Output File:	C:\Users\mark j-ctr dillon\Documents\TARGETS PROJECTS\PIE TPA\FOXAR_PIE TPA\KPIE ENDED2 (RNAV) SID\DME\KPIE [IFPA] ENDED2 20230509_1343 EDT\ENDED_LACEN\KPIE ENDED2 SID ENDED LACEN 20230509_1343 EDT.pdf
Procedure Name:	ENDED2
Software: DmeDmePlugin:	7.1.0
Date/Time:	05/09/2023 13:43 EDT
Databases:	DTED 0 MAX

Failures

No Failures

Warnings

No Warnings

Informational

No Informational

Notes For Flight Check

None

Flight Plan

Name	Type	Lat/Lon	Altitude (ft)	VNAV Mode	Ground Speed (kts)	Turn Type	Leg Type
ENDED	WP	N28° 24' 35.14", W082° 47' 03.97"	1600	VNAV	200	FLY_BY	TF
LACEN	WP	N28° 34' 28.09", W082° 48' 40.78"	3591.7	VNAV	200	FLY_BY	TF

Flyability

Flight Type:	SID
Selected Airport:	KPIE [IFPA]
Climb Gradient:	None assigned
Speeds:	130 at the Runway DER
	145 at the end of the VA or VI leg
	200 Ground Speed to 11000 FT
	240 Ground Speed to 18000 FT
	260 Ground Speed to 24000 FT
	340 Ground Speed above 24000 FT
Descent During a Turn:	Allowed
VNAV Mode:	Flight Plan

DME DME Assessment Results for ENDED2 path ENDED_LACEN

DME/DME	
RNP:	RNP 2
Flight Mode:	Manual
Line of Sight (DTED Level 0 Max):	Evaluated
Inertial Drift:	Enabled
Initial Drift:	0.558 NM
INS Drift Rate:	8.0 NM/Hour
Range Mode:	OSV
RNP Edges:	Evaluated
Min DME Range:	3.0 NM
DME Types:	DME, VOR-DME, VORTAC, TACAN
DME Include Angles:	30 to 150
Critical DMEs:	Not Allowed
DoD Facilities:	Included
Foreign Facilities:	Not included
High DMEs:	Included
Low DMEs:	Included
Terminal DMEs:	Included
Flight Check DMEs:	Not selected
Higher Altitudes:	Not Evaluated
Near Maximum Altitude:	Not Evaluated
Automatic ESVs:	Not enabled
Disabled DMEs:	None

DME/DME (Continued)										
DMEs Used										
#	Name	Lat/Lon	MAGVAR	Range	Type	Source	Critical	Status	Time	Distance

Flight Check DME Selection						
Distance [NM]	Selected DMEs					Alternate
0.0						

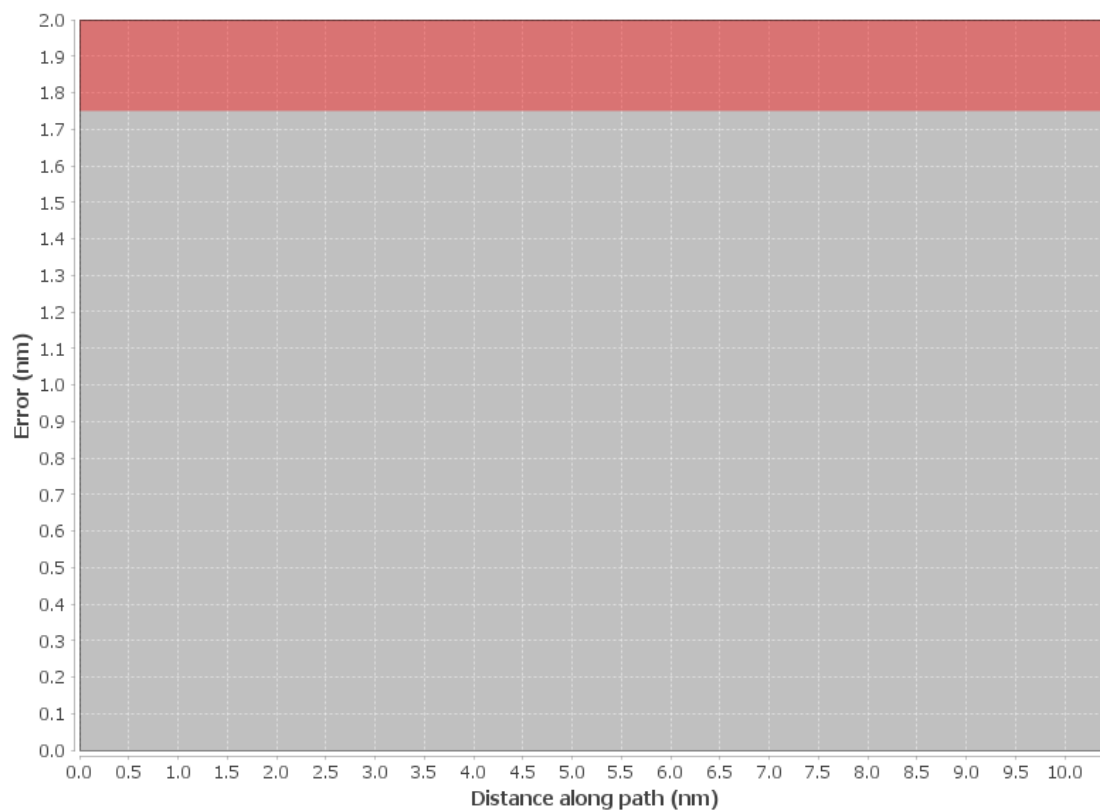
Inertial Drift Segments			
#	Start Location	End Location	Length [NM]
1	N28° 24' 35.14", W082° 47' 03.97"	N28° 34' 28.09", W082° 48' 40.78"	9.9585

Available DMEs by Waypoints			
Waypoint Before	Waypoint After	DME List	Suggested DMEs
ENDED	LACEN		

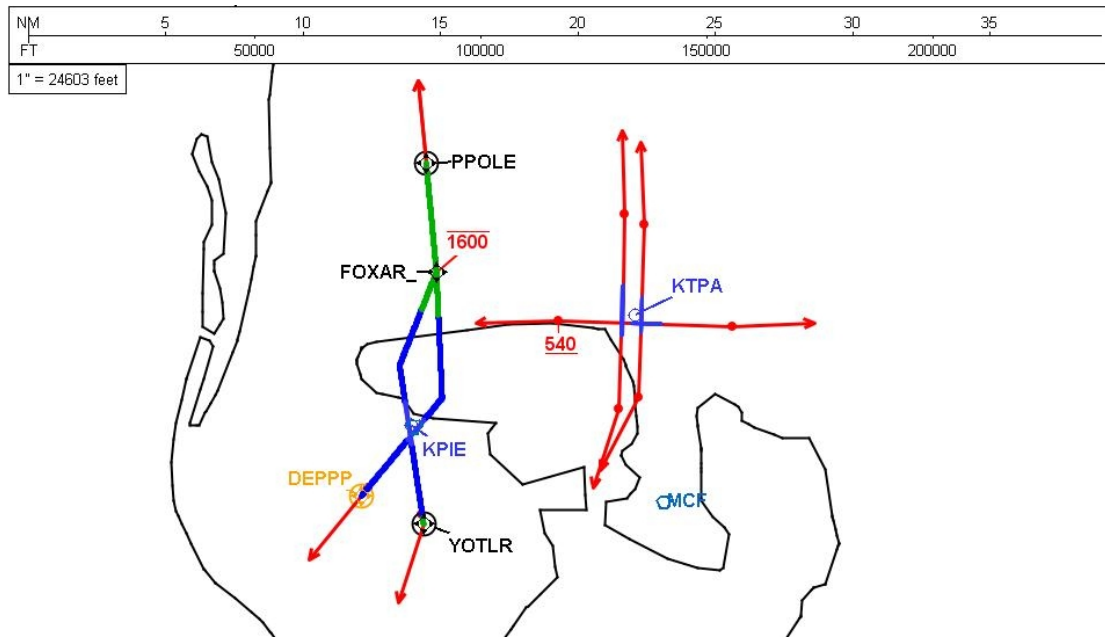
User Data Files								
#	File Name							
None								
User DMEs								
#	Name	Lat/Lon	MAGVAR	Range	Elevation [ft]	Frequency	Replaces	Status
None								

DME DME Assessment Results for ENDED2 path ENDED_LACEN

DME Error

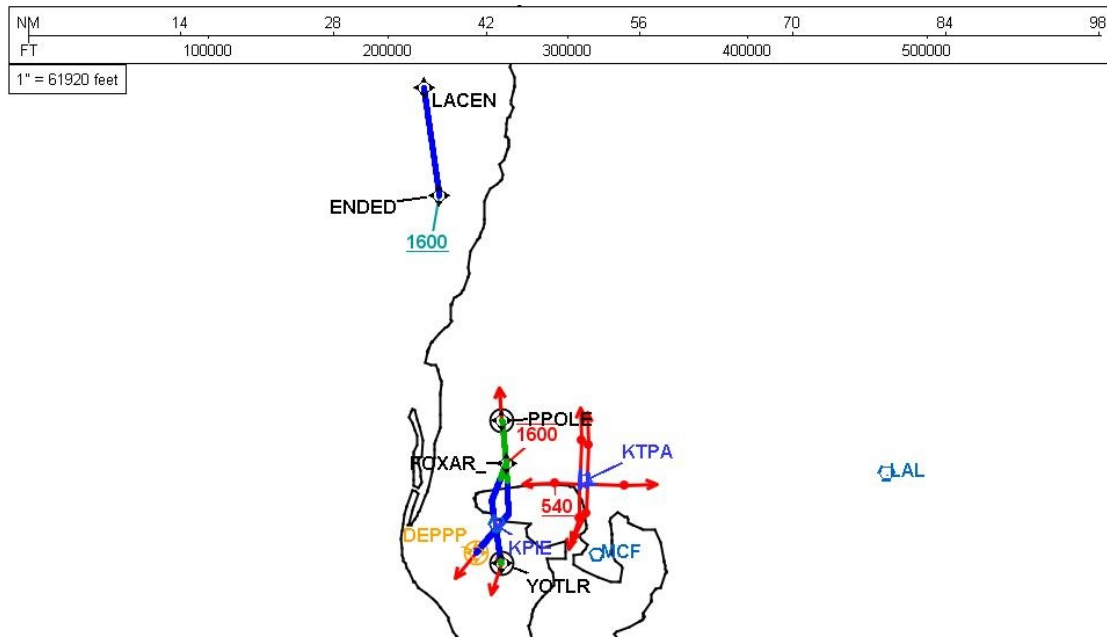


Graphic Depiction 1



DME DME Assessment Results for ENDED2 path ENDED_LACEN

Graphic Depiction 2



DME DME Assessment Results for ENDED2 path KPIE:RW04:DER_PPOLE

Results Summary

Flyability:	Completed
DME/DME:	Completed - No Critical DMEs
Name:	Mark J-CTR Dillon
Project File:	C:\Users\mark j-ctr dillon\Documents\TARGETS PROJECTS\PIE TPA\FOXAR_PIE TPA\KPIE ENDED2 (RNAV) SID\DME\KPIE ENDED2 (RNAV) SID DME 230509.tgs
Output File:	C:\Users\mark j-ctr dillon\Documents\TARGETS PROJECTS\PIE TPA\FOXAR_PIE TPA\KPIE ENDED2 (RNAV) SID\DME\KPIE [IFPA] ENDED2 20230509_1343 EDT\KPIE-RW04-DER_PPOLE\KPIE ENDED2 SID RW04 PPOLE 20230509_1343 EDT.pdf
Procedure Name:	ENDED2
Software: DmeDmePlugin:	7.1.0
Date/Time:	05/09/2023 13:43 EDT
Databases:	DTED 0 MAX

Failures

No Failures

Warnings

No Warnings

Informational

No Informational

Notes For Flight Check

None

Flight Plan

Name	Type	Lat/Lon	Altitude (ft)	VNAV Mode	Ground Speed (kts)	Turn Type	Leg Type
KPIE:RW04:DER	WP	N27° 54' 44.86", W082° 40' 38.86"	5.1	VNAV	130	FLY_BY	TF
FOXAR_	WP	N28° 00' 06.25", W082° 40' 09.12"	1395.4	VNAV	200	FLY_BY	TF
PPOLE	WP	N28° 04' 02.55", W082° 40' 34.45"	1600	VNAV	200	FLY_OVER	TF
Climb Gradient: 500.0 ft/NM up to 511.0 ft MSL							

Flyability

Flight Type:	SID
Selected Airport:	KPIE [IFPA]
Climb Gradient:	500.0 ft/NM up to 511.0 ft MSL
Speeds:	130 at the Runway DER
	145 at the end of the VA or VI leg
	200 Ground Speed to 11000 FT
	240 Ground Speed to 18000 FT
	260 Ground Speed to 24000 FT
	340 Ground Speed above 24000 FT
Descent During a Turn:	Allowed
VNAV Mode:	Flight Plan

DME DME Assessment Results for ENDED2 path KPIE:RW04:DER_PPOLE

DME/DME	
RNP:	RNP 2
Flight Mode:	Manual
Line of Sight (DTED Level 0 Max):	Evaluated
Inertial Drift:	Enabled
Initial Drift:	0.558 NM
INS Drift Rate:	8.0 NM/Hour
Range Mode:	OSV
RNP Edges:	Evaluated
Min DME Range:	3.0 NM
DME Types:	DME, VOR-DME, VORTAC, TACAN
DME Include Angles:	30 to 150
Critical DMEs:	Not Allowed
DoD Facilities:	Included
Foreign Facilities:	Not included
High DMEs:	Included
Low DMEs:	Included
Terminal DMEs:	Included
Flight Check DMEs:	Not selected
Higher Altitudes:	Not Evaluated
Near Maximum Altitude:	Not Evaluated
Automatic ESVs:	Not enabled
Disabled DMEs:	None

DME/DME (Continued)										
DMEs Used										
#	Name	Lat/Lon	MAGVAR	Range	Type	Source	Critical	Status	Time	Distance
1	LAL	N27° 59' 10.31", W082° 00' 50.06"	1.0 E	130	H	IFPA	NO	Enabled	51 %	58.3 %
2	PIE	N27° 54' 27.95", W082° 41' 03.51"	5.0 W	130	H	IFPA	NO	Enabled	51 %	58.3 %
3	MCF	N27° 51' 40.18", W082° 30' 48.64"	6.0 W	40	L	IFPA	NO	Enabled	50.1 %	57.4 %

Flight Check DME Selection						
Distance [NM]	Selected DMEs					Alternate
0.0						
4.0	PIE	LAL				
4.1	PIE	LAL	MCF			

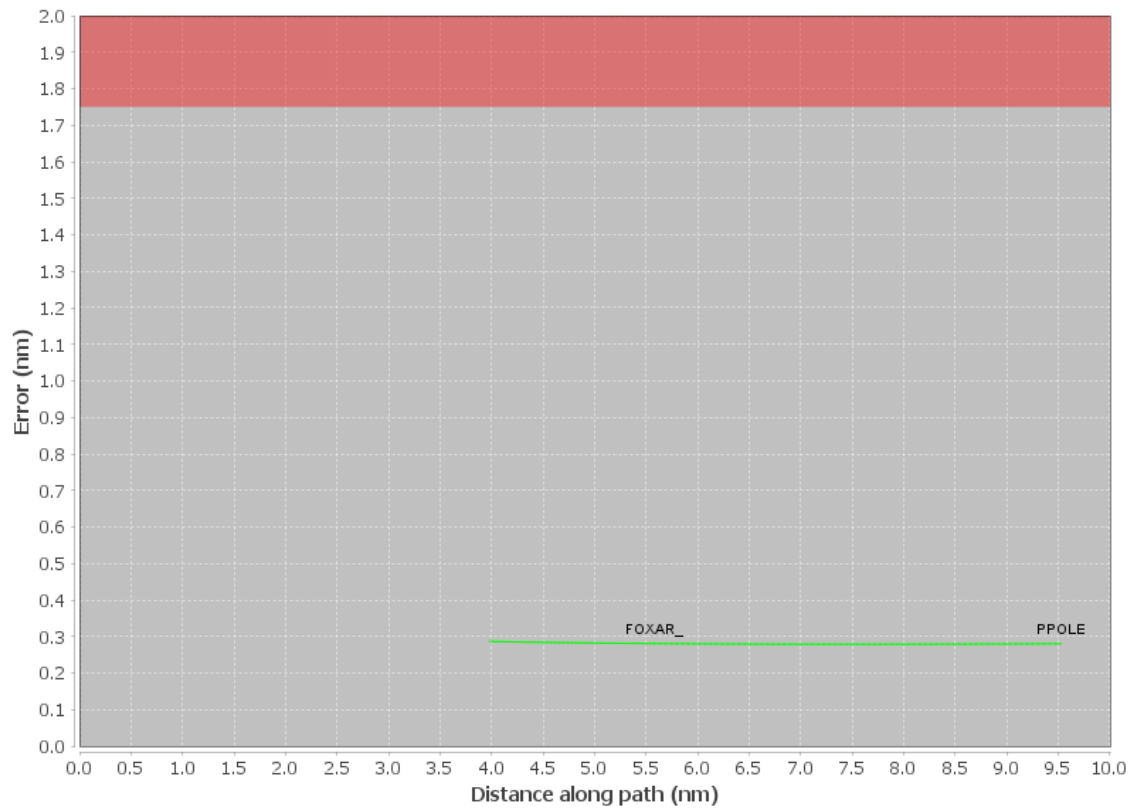
Inertial Drift Segments			
#	Start Location	End Location	Length [NM]
1	N27° 54' 46.47", W082° 40' 37.35"	N27° 58' 29.92", W082° 40' 04.17"	3.9435

Available DMEs by Waypoints			
Waypoint Before	Waypoint After	DME List	Suggested DMEs
KPIE:RW04:DER	FOXAR_	MCF, LAL, PIE	
FOXAR_	PPOLE	MCF, LAL, PIE	

User Data Files								
#	File Name							
None								
User DMEs								
#	Name	Lat/Lon	MAGVAR	Range	Elevation [ft]	Frequency	Replaces	Status
None								

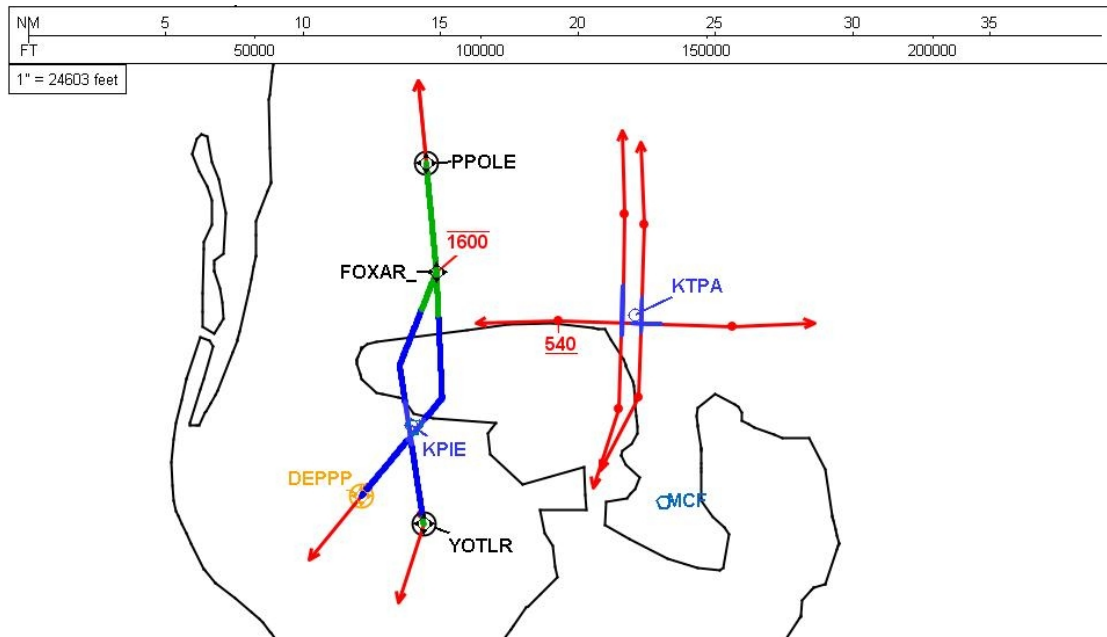
DME DME Assessment Results for ENDED2 path KPIE:RW04:DER_PPOLE

DME Error



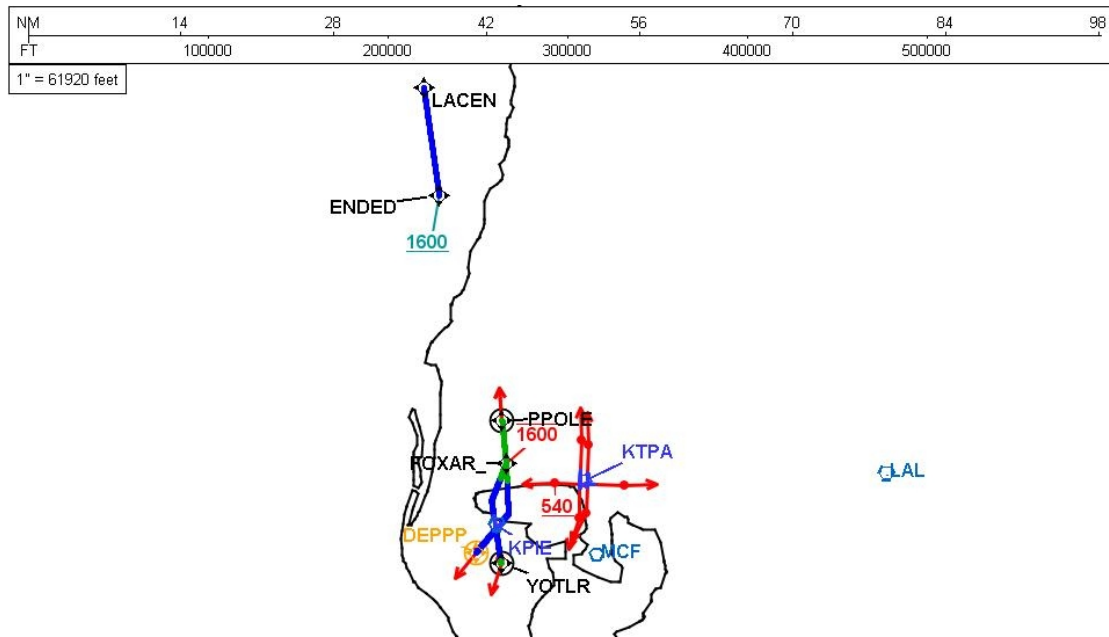
DME DME Assessment Results for ENDED2 path KPIE:RW04:DER_PPOLE

Graphic Depiction 1



DME DME Assessment Results for ENDED2 path KPIE:RW04:DER_PPOLE

Graphic Depiction 2



DME DME Assessment Results for ENDED2 path KPIE:RW18:DER_YOTLR

Results Summary

Flyability:	Completed
DME/DME:	Completed - No Critical DMEs
Name:	Mark J-CTR Dillon
Project File:	C:\Users\mark j-ctr dillon\Documents\TARGETS PROJECTS\PIE TPA\FOXAR_PIE TPA\KPIE ENDED2 (RNAV) SID\DME\KPIE ENDED2 (RNAV) SID DME 230509.tgs
Output File:	C:\Users\mark j-ctr dillon\Documents\TARGETS PROJECTS\PIE TPA\FOXAR_PIE TPA\KPIE ENDED2 (RNAV) SID\DME\KPIE [IFPA] ENDED2 20230509_1343 EDT\KPIE-RW18-DER_YOTLR\KPIE ENDED2 SID RW18 YOTLR 20230509_1343 EDT.pdf
Procedure Name:	ENDED2
Software: DmeDmePlugin:	7.1.0
Date/Time:	05/09/2023 13:43 EDT
Databases:	DTED 0 MAX

Failures

No Failures

Warnings

No Warnings

Informational

No Informational

Notes For Flight Check

None

Flight Plan

Name	Type	Lat/Lon	Altitude (ft)	VNAV Mode	Ground Speed (kts)	Turn Type	Leg Type
KPIE:RW18:DER	WP	N27° 53' 49.05", W082° 41' 10.15"	9.8	VNAV	130	FLY_OVER	TF
YOTLR	WP	N27° 50' 58.39", W082° 40' 40.87"	583.7	VNAV	200	FLY_OVER	TF
Climb Gradient: 0.0 ft/NM up to 520.0 ft MSL							

Flyability

Flight Type:	SID
Selected Airport:	KPIE [IFPA]
Climb Gradient:	0.0 ft/NM up to 520.0 ft MSL
Speeds:	130 at the Runway DER
	145 at the end of the VA or VI leg
	200 Ground Speed to 11000 FT
	240 Ground Speed to 18000 FT
	260 Ground Speed to 24000 FT
	340 Ground Speed above 24000 FT
Descent During a Turn:	Allowed
VNAV Mode:	Flight Plan

DME DME Assessment Results for ENDED2 path KPIE:RW18:DER_YOTLR

DME/DME	
RNP:	RNP 2
Flight Mode:	Manual
Line of Sight (DTED Level 0 Max):	Evaluated
Inertial Drift:	Enabled
Initial Drift:	0.558 NM
INS Drift Rate:	8.0 NM/Hour
Range Mode:	OSV
RNP Edges:	Evaluated
Min DME Range:	3.0 NM
DME Types:	DME, VOR-DME, VORTAC, TACAN
DME Include Angles:	30 to 150
Critical DMEs:	Not Allowed
DoD Facilities:	Included
Foreign Facilities:	Not included
High DMEs:	Included
Low DMEs:	Included
Terminal DMEs:	Included
Flight Check DMEs:	Not selected
Higher Altitudes:	Not Evaluated
Near Maximum Altitude:	Not Evaluated
Automatic ESVs:	Not enabled
Disabled DMEs:	None

DME/DME (Continued)										
DMEs Used										
#	Name	Lat/Lon	MAGVAR	Range	Type	Source	Critical	Status	Time	Distance
1	PIE	N27° 54' 27.95", W082° 41' 03.51"	5.0 W	130	H	IFPA	NO	Enabled	6.4 %	8.3 %
2	MCF	N27° 51' 40.18", W082° 30' 48.64"	6.0 W	40	L	IFPA	NO	Enabled	6.4 %	8.3 %

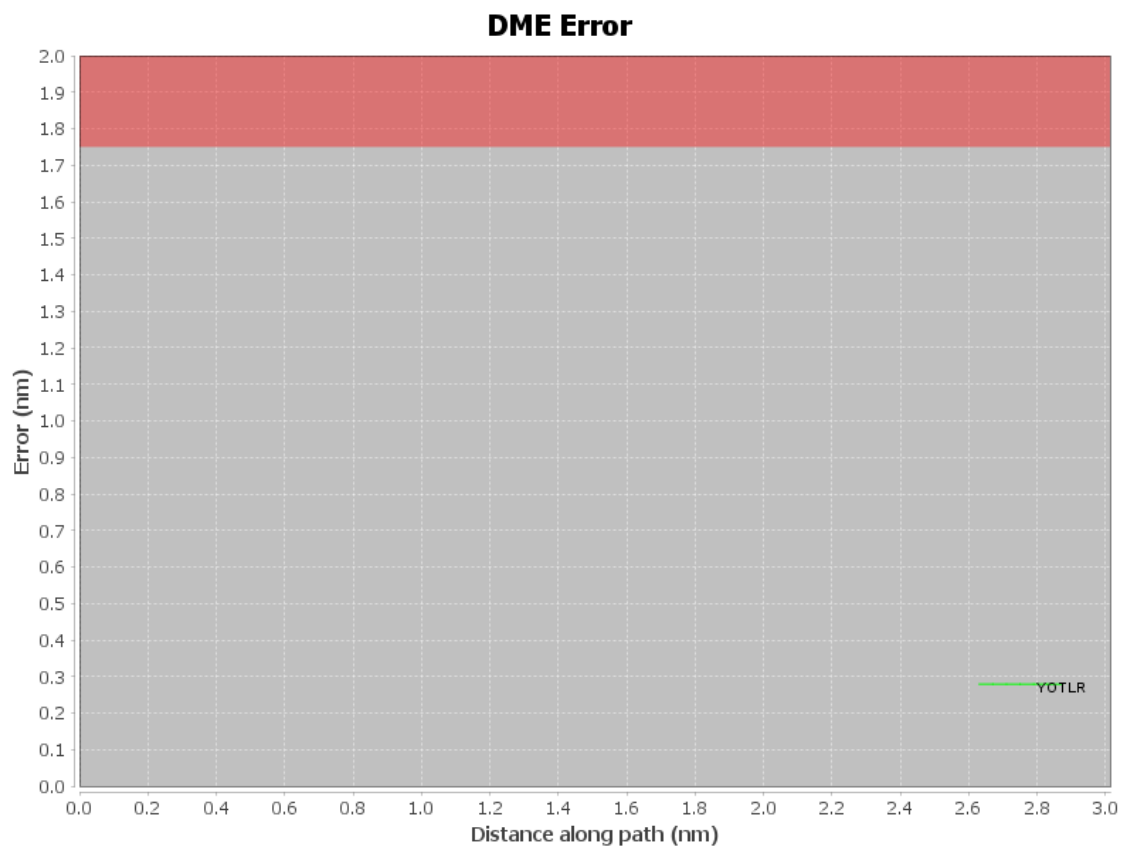
Flight Check DME Selection						
Distance [NM]	Selected DMEs					Alternate
0.0						
2.6	MCF	PIE				

Inertial Drift Segments			
#	Start Location	End Location	Length [NM]
1	N27° 53' 46.92", W082° 41' 09.78"	N27° 51' 12.60", W082° 40' 43.27"	2.6015

Available DMEs by Waypoints			
Waypoint Before	Waypoint After	DME List	Suggested DMEs
KPIE:RW18:DER	YOTLR	MCF, PIE	

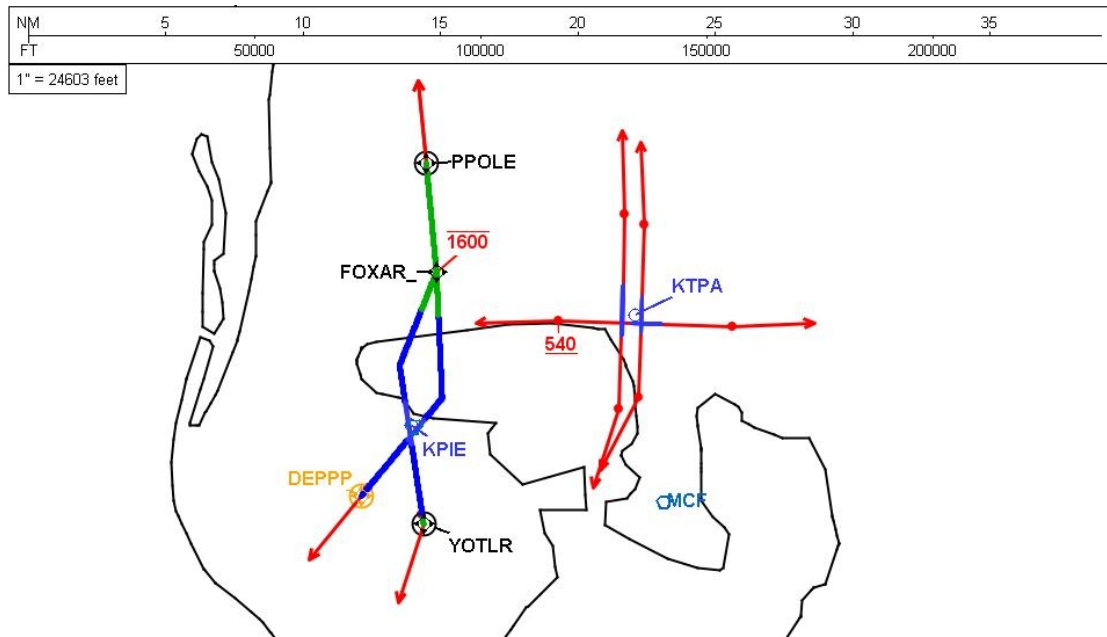
User Data Files								
#	File Name							
None								
User DMEs								
#	Name	Lat/Lon	MAGVAR	Range	Elevation [ft]	Frequency	Replaces	Status
None								

DME DME Assessment Results for ENDED2 path KPIE:RW18:DER_YOTLR



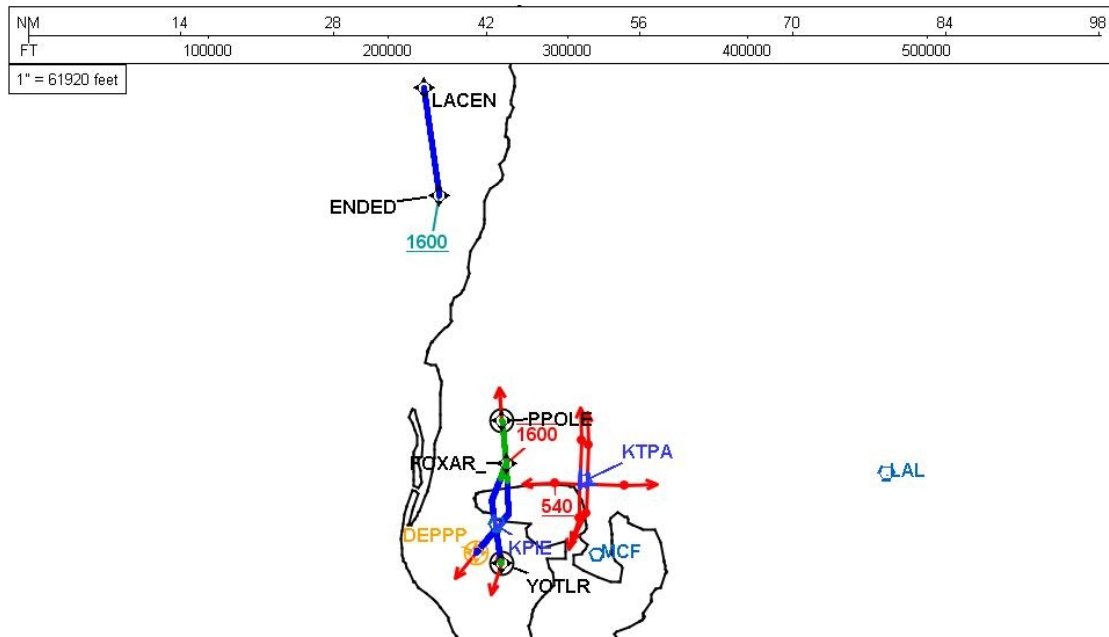
DME DME Assessment Results for ENDED2 path KPIE:RW18:DER_YOTLR

Graphic Depiction 1



DME DME Assessment Results for ENDED2 path KPIE:RW18:DER_YOTLR

Graphic Depiction 2



DME DME Assessment Results for ENDED2 path KPIE:RW22:DER_DEPPP

Results Summary

Flyability:	Completed
DME/DME:	Completed - No Critical DMEs
Name:	Mark J-CTR Dillon
Project File:	C:\Users\mark j-ctr dillon\Documents\TARGETS PROJECTS\PIE TPA\FOXAR_PIE TPA\KPIE ENDED2 (RNAV) SID\DME\KPIE ENDED2 (RNAV) SID DME 230509.tgs
Output File:	C:\Users\mark j-ctr dillon\Documents\TARGETS PROJECTS\PIE TPA\FOXAR_PIE TPA\KPIE ENDED2 (RNAV) SID\DME\KPIE [IFPA] ENDED2 20230509_1343 EDT\KPIE-RW22- DER_DEPPP\KPIE ENDED2 SID RW22 DEPPP 20230509_1343 EDT.pdf
Procedure Name:	ENDED2
Software: DmeDmePlugin:	7.1.0
Date/Time:	05/09/2023 13:43 EDT
Databases:	DTED 0 MAX

Failures

No Failures

Warnings

No Warnings

Informational

No Informational

Notes For Flight Check

None

Flight Plan

Name	Type	Lat/Lon	Altitude (ft)	VNAV Mode	Ground Speed (kts)	Turn Type	Leg Type
KPIE:RW22:DER	WP	N27° 53' 59.16", W082° 41' 21.60"	10.7	VNAV	130	FLY_OVER	TF
DEPPP	WP	N27° 51' 58.64", W082° 43' 14.27"	594.1	VNAV	200	FLY_OVER	TF
Climb Gradient: 228.0 ft/NM up to 217.0 ft MSL 0.0 ft/NM up to 520.0 ft MSL							

Flyability

Flight Type:	SID
Selected Airport:	KPIE [IFPA]
Climb Gradient:	228.0 ft/NM up to 217.0 ft MSL 0.0 ft/NM up to 520.0 ft MSL
Speeds:	130 at the Runway DER
	145 at the end of the VA or VI leg
	200 Ground Speed to 11000 FT
	240 Ground Speed to 18000 FT
	260 Ground Speed to 24000 FT
	340 Ground Speed above 24000 FT
Descent During a Turn:	Allowed
VNAV Mode:	Flight Plan

DME DME Assessment Results for ENDED2 path KPIE:RW22:DER_DEPPP

DME/DME	
RNP:	RNP 2
Flight Mode:	Manual
Line of Sight (DTED Level 0 Max):	Evaluated
Inertial Drift:	Enabled
Initial Drift:	0.558 NM
INS Drift Rate:	8.0 NM/Hour
Range Mode:	OSV
RNP Edges:	Evaluated
Min DME Range:	3.0 NM
DME Types:	DME, VOR-DME, VORTAC, TACAN
DME Include Angles:	30 to 150
Critical DMEs:	Not Allowed
DoD Facilities:	Included
Foreign Facilities:	Not included
High DMEs:	Included
Low DMEs:	Included
Terminal DMEs:	Included
Flight Check DMEs:	Not selected
Higher Altitudes:	Not Evaluated
Near Maximum Altitude:	Not Evaluated
Automatic ESVs:	Not enabled
Disabled DMEs:	None

DME/DME (Continued)										
DMEs Used										
#	Name	Lat/Lon	MAGVAR	Range	Type	Source	Critical	Status	Time	Distance

Flight Check DME Selection						
Distance [NM]	Selected DMEs					Alternate
0.0						

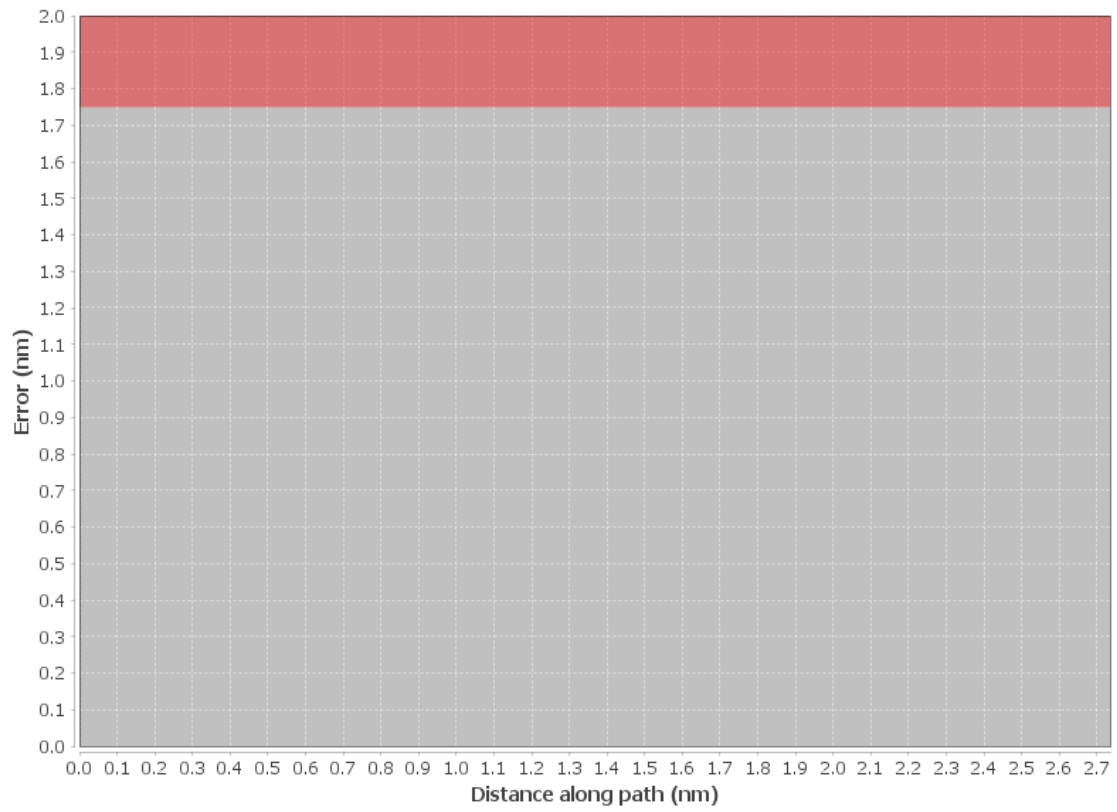
Inertial Drift Segments			
#	Start Location	End Location	Length [NM]
1	N27° 53' 57.50", W082° 41' 23.16"	N27° 51' 58.64", W082° 43' 14.27"	2.5697

Available DMEs by Waypoints			
Waypoint Before	Waypoint After	DME List	Suggested DMEs
KPIE:RW22:DER	DEPPP		

User Data Files								
#	File Name							
None								
User DMEs								
#	Name	Lat/Lon	MAGVAR	Range	Elevation [ft]	Frequency	Replaces	Status
None								

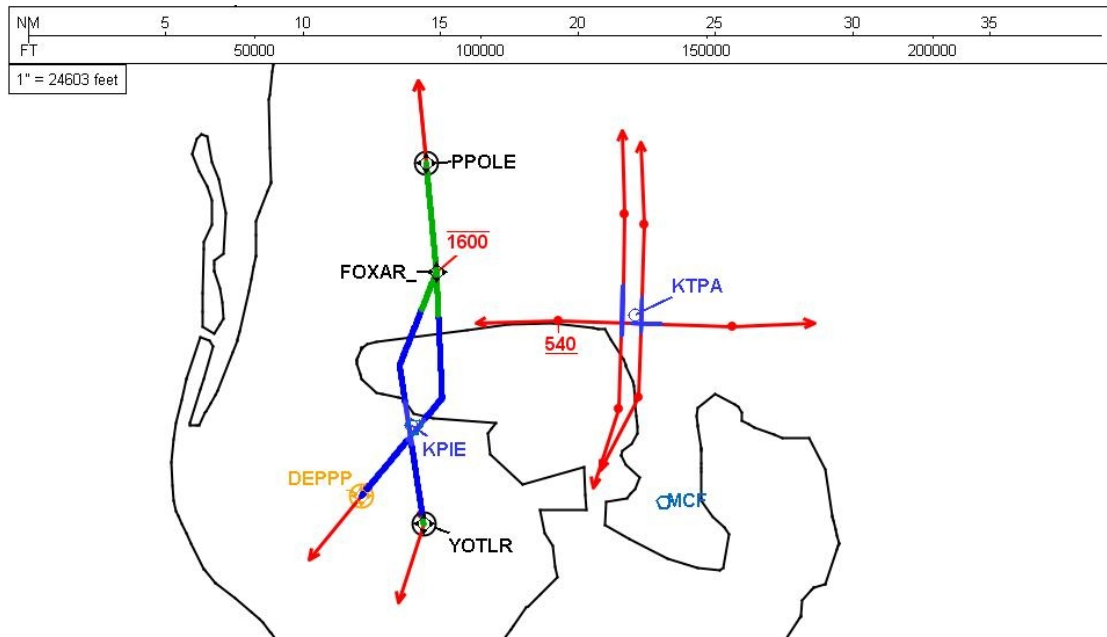
DME DME Assessment Results for ENDED2 path KPIE:RW22:DER_DEPPP

DME Error



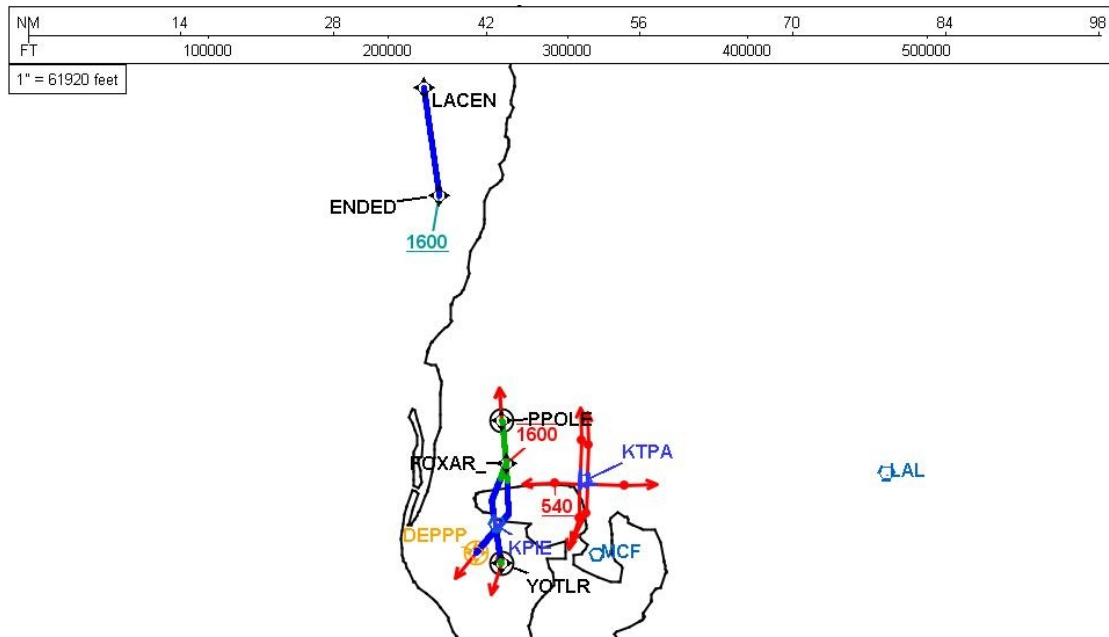
DME DME Assessment Results for ENDED2 path KPIE:RW22:DER_DEPPP

Graphic Depiction 1



DME DME Assessment Results for ENDED2 path KPIE:RW22:DER_DEPPP

Graphic Depiction 2



DME DME Assessment Results for ENDED2 path KPIE:RW36:DER_FOXAR_

Results Summary

Flyability:	Completed
DME/DME:	Completed - No Critical DMEs
Name:	Mark J-CTR Dillon
Project File:	C:\Users\mark j-ctr dillon\Documents\TARGETS PROJECTS\PIE TPA\FOXAR_PIE TPA\KPIE ENDED2 (RNAV) SID\DME\KPIE ENDED2 (RNAV) SID DME 230509.tgs
Output File:	C:\Users\mark j-ctr dillon\Documents\TARGETS PROJECTS\PIE TPA\FOXAR_PIE TPA\KPIE ENDED2 (RNAV) SID\DME\KPIE [IFPA] ENDED2 20230509_1343 EDT\KPIE-RW36-DER_FOXAR_KPIE ENDED2 SID RW36 FOXAR 20230509_1343 EDT.pdf
Procedure Name:	ENDED2
Software: DmeDmePlugin:	7.1.0
Date/Time:	05/09/2023 13:43 EDT
Databases:	DTED 0 MAX

Failures

No Failures

Warnings

No Warnings

Informational

No Informational

Notes For Flight Check

None

Flight Plan

Name	Type	Lat/Lon	Altitude (ft)	VNAV Mode	Ground Speed (kts)	Turn Type	Leg Type
KPIE:RW36:DER	WP	N27° 55' 24.29", W082° 41' 26.54"	6.6	VNAV	130	FLY_BY	TF
FOXAR_	WP	N28° 00' 06.25", W082° 40' 09.12"	1395.4	VNAV	200	FLY_BY	TF
Climb Gradient: 500.0 ft/NM up to 520.0 ft MSL							

Flyability

Flight Type:	SID
Selected Airport:	KPIE [IFPA]
Climb Gradient:	500.0 ft/NM up to 520.0 ft MSL
Speeds:	130 at the Runway DER
	145 at the end of the VA or VI leg
	200 Ground Speed to 11000 FT
	240 Ground Speed to 18000 FT
	260 Ground Speed to 24000 FT
	340 Ground Speed above 24000 FT
Descent During a Turn:	Allowed
VNAV Mode:	Flight Plan

DME DME Assessment Results for ENDED2 path KPIE:RW36:DER_FOXAR_

DME/DME	
RNP:	RNP 2
Flight Mode:	Manual
Line of Sight (DTED Level 0 Max):	Evaluated
Inertial Drift:	Enabled
Initial Drift:	0.558 NM
INS Drift Rate:	8.0 NM/Hour
Range Mode:	OSV
RNP Edges:	Evaluated
Min DME Range:	3.0 NM
DME Types:	DME, VOR-DME, VORTAC, TACAN
DME Include Angles:	30 to 150
Critical DMEs:	Not Allowed
DoD Facilities:	Included
Foreign Facilities:	Not included
High DMEs:	Included
Low DMEs:	Included
Terminal DMEs:	Included
Flight Check DMEs:	Not selected
Higher Altitudes:	Not Evaluated
Near Maximum Altitude:	Not Evaluated
Automatic ESVs:	Not enabled
Disabled DMEs:	None

DME/DME (Continued)										
DMEs Used										
#	Name	Lat/Lon	MAGVAR	Range	Type	Source	Critical	Status	Time	Distance
1	LAL	N27° 59' 10.31", W082° 00' 50.06"	1.0 E	130	H	IFPA	NO	Enabled	25.1 %	29.8 %
2	PIE	N27° 54' 27.95", W082° 41' 03.51"	5.0 W	130	H	IFPA	NO	Enabled	25.1 %	29.8 %
3	MCF	N27° 51' 40.18", W082° 30' 48.64"	6.0 W	40	L	IFPA	NO	Enabled	25.1 %	29.8 %

Flight Check DME Selection						
Distance [NM]	Selected DMEs					Alternate
0.0						
3.5	PIE	LAL	MCF			

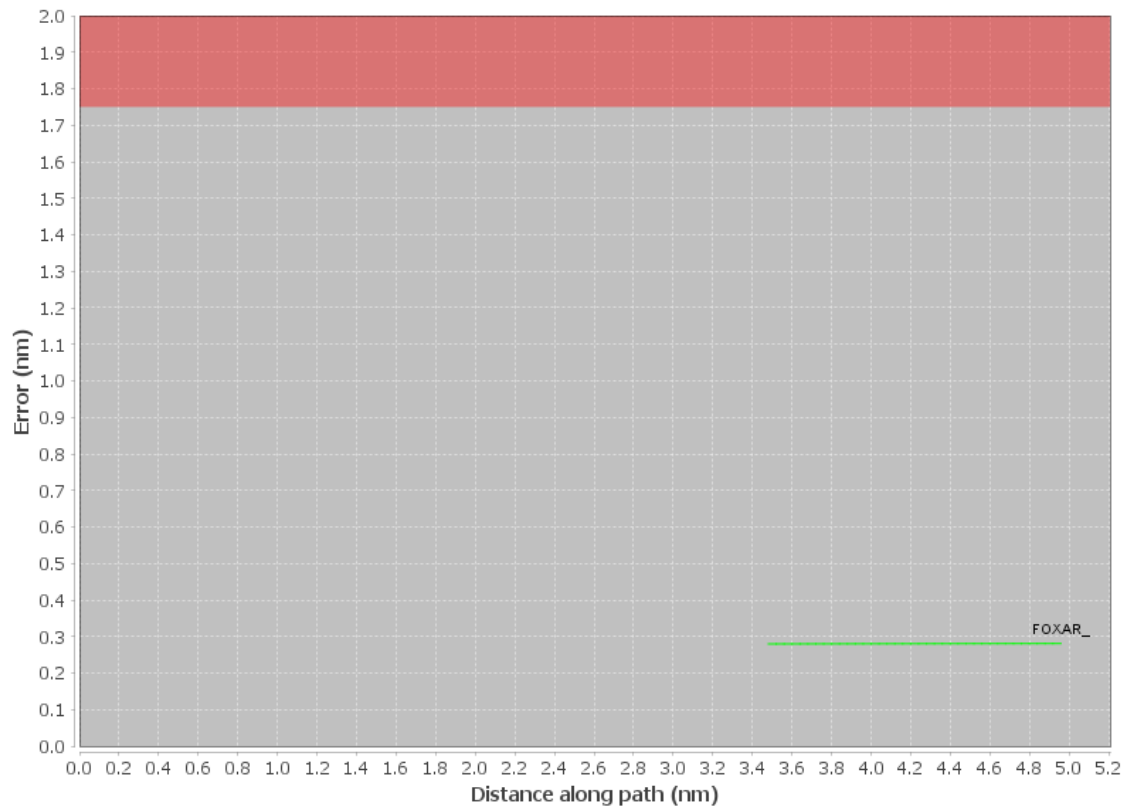
Inertial Drift Segments			
#	Start Location	End Location	Length [NM]
1	N27° 55' 26.40", W082° 41' 26.90"	N27° 58' 43.62", W082° 40' 46.12"	3.4488

Available DMEs by Waypoints			
Waypoint Before	Waypoint After	DME List	Suggested DMEs
KPIE:RW36:DER	FOXAR_	MCF, LAL, PIE	

User Data Files								
#	File Name							
None								
User DMEs								
#	Name	Lat/Lon	MAGVAR	Range	Elevation [ft]	Frequency	Replaces	Status
None								

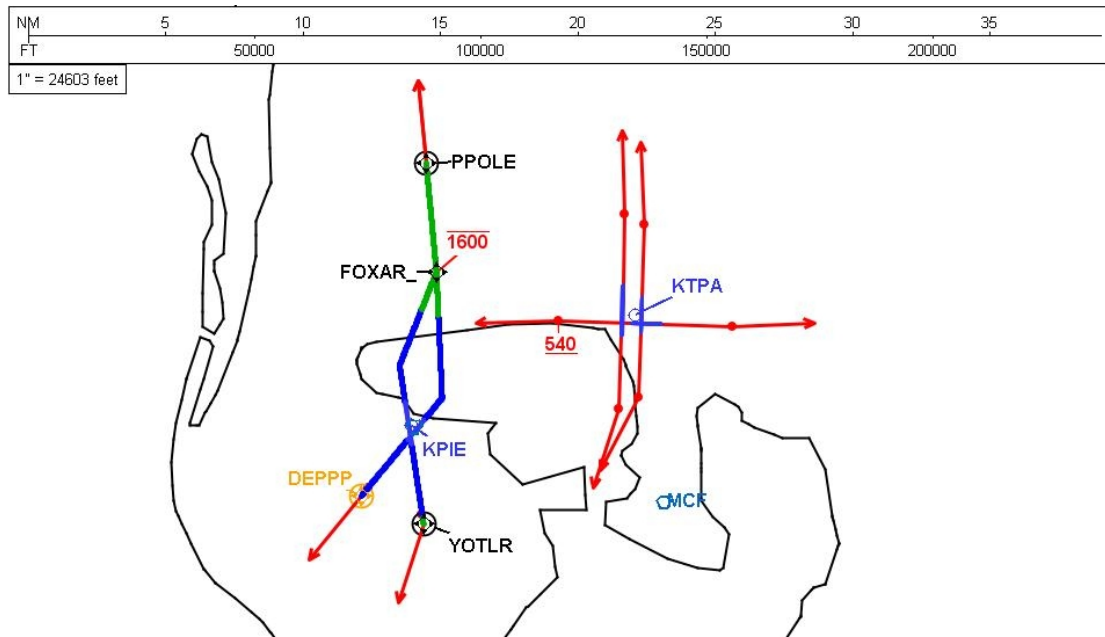
DME DME Assessment Results for ENDED2 path KPIE:RW36:DER_FOXAR_

DME Error



DME DME Assessment Results for ENDED2 path KPIE:RW36:DER_FOXAR_

Graphic Depiction 1



DME DME Assessment Results for ENDED2 path KPIE:RW36:DER_FOXAR_

Graphic Depiction 2

