

**DME ESVs**

#	Name	Lat/Lon	MAGVAR	Range	Elevation [ft]	Frequency	Replaces	Status
1	CYY FAA 815803-026 CYY [IFPA]	N26° 09' 12.339" W081° 46' 41.172"	3.0 W	25	8.7	108.6	CYY FAA 815803-026	
Restriction:		Bearing [True]: 212.0° to 312.0° Bearing [Mag]: 215.0° to 315.0°				Distance: All Altitude: Below 99999.0 ft		
ESV:		Bearing [True]: 347.0° to 17.0° Bearing [Mag]: 350.0° to 20.0°				Arc Distance: Out to 65.0 NM Altitude: 3500.0 to 10000.0 ft		
2	SRQ FAA 070100-053 SRQ [IFPA]	N27° 24' 25.256" W082° 33' 49.185"	5.0 W	130	19	117.0	SRQ FAA 070100-053	
ESV:		Bearing [True]: 95.0° to 115.0° Bearing [Mag]: 100.0° to 120.0°				Arc Distance: Out to 60.0 NM Altitude: 3000.0 to 10000.0 ft		

**DME ESVs**

#	Name	Lat/Lon	MAGVAR	Range	Elevation [ft]	Frequency	Replaces	Status
1	CYY FAA 815803-026 CYY [IFPA]	N26° 09' 12.339" W081° 46' 41.172"	3.0 W	25	8.7	108.6	CYY FAA 815803-026	
Restriction:		Bearing [True]: 212.0° to 312.0° Bearing [Mag]: 215.0° to 315.0°				Distance: All Altitude: Below 99999.0 ft		
ESV:		Bearing [True]: 347.0° to 17.0° Bearing [Mag]: 350.0° to 20.0°				Arc Distance: Out to 65.0 NM Altitude: 3500.0 to 10000.0 ft		
2	SRQ FAA 070100-053 SRQ [IFPA]	N27° 24' 25.256" W082° 33' 49.185"	5.0 W	130	19	117.0	SRQ FAA 070100-053	
ESV:		Bearing [True]: 95.0° to 115.0° Bearing [Mag]: 100.0° to 120.0°				Arc Distance: Out to 60.0 NM Altitude: 3000.0 to 10000.0 ft		

## DME DME Assessment Results for BNICE1 path KFL:RW28R:DER\_KBUNK

### Results Summary

Flyability:	Completed
DME/DME:	Completed - No Critical DMEs
Name:	Miles CTR Carpenter
Project File:	C:\Users\Miles CTR Carpenter\Desktop\FLMP May 2022 DME Evaluations\KFL\KFL BNICE1 SID DME 20220131_0538 EST\KFL BNICE1 SID DME 20220131.tgs
Output File:	C:\Users\Miles CTR Carpenter\Desktop\FLMP May 2022 DME Evaluations\KFL\KFL [IFPA] BNICE1 20220201_0705 EST\KFL-RW28R-DER_KBUNK\KFL BNICE1 SID KFL RW28R KBUNK 20220201_0705 EST.pdf
Procedure Name:	BNICE1
Software: DmeDmePlugin:	6.4.1
Date/Time:	02/01/2022 07:05 EST
Databases:	DTED MAX

### Failures

No Failures

### Warnings

No Warnings

### Notes For Flight Check

None

### Flight Plan

Name	Type	Lat/Lon	Altitude (ft)	VNAV Mode	Ground Speed (kts)	Turn Type	Leg Type
KFL:RW28R:DER	WP	N26° 04' 37.017", W080° 09' 59.538"	6	VNAV	130	FLY_OVER	TF
SEAZZ_	WP	N26° 04' 33.309", W080° 13' 51.458"	1000	VNAV	200	FLY_BY	TF
HEPAD_	WP	N26° 04' 28.676", W080° 18' 32.556"	1800	VNAV	200	FLY_BY	TF
KBUNK	WP	N26° 13' 23.910", W080° 29' 28.010"	4000	VNAV	200	FLY_BY	TF
Climb Gradient: 500.0 ft/NM up to 580.0 ft MSL 200.0 ft/NM							

### Flyability

Flight Type:	SID
Selected Airport:	KFL [IFPA]
Climb Gradient:	500.0 ft/NM up to 580.0 ft MSL 200.0 ft/NM
Speeds:	130 at the Runway DER
	145 at the end of the VA or VI leg
	200 Ground Speed to 11000 FT
	240 Ground Speed to 18000 FT
	260 Ground Speed to 24000 FT
	340 Ground Speed above 24000 FT
Descent During a Turn:	Allowed
VNAV Mode:	Flight Plan

# DME DME Assessment Results for BNICE1 path KLL:RW28R:DER\_KBUNK

DME/DME	
RNP:	RNP 2
Flight Mode:	Manual
Line of Sight (DTED Level 0 Max):	Evaluated
Inertial Drift:	Enabled
Initial Drift:	0.558 NM
INS Drift Rate:	8.0 NM/Hour
Range Mode:	OSV
RNP Edges:	Evaluated
Min DME Range:	3.0 NM
DME Types:	DME, VOR-DME, VORTAC
DME Include Angles:	30 to 150
Critical DMEs:	Not Allowed
DoD Facilities:	Not included
Foreign Facilities:	Included
High DMEs:	Included
Low DMEs:	Included
Terminal DMEs:	Included
Flight Check DMEs:	Not selected
Higher Altitudes:	Not Evaluated
Near Maximum Altitude:	Not Evaluated
Automatic ESVs:	Not enabled
Disabled DMEs:	ZFP,ZQA,ZTC

DME/DME (Continued)										
DMEs Used										
#	Name	Lat/Lon	MAGVAR	Range	Type	Source	Critical	Status	Time	Distance
1	PHK	N26° 46' 57.873", W080° 41' 29.157"	0.0 E	130	H	IFPA	NO	Enabled	14.2 %	14.8 %
2	VKZ	N25° 45' 06.846", W080° 09' 15.996"	4.0 W	130	H	IFPA	NO	Enabled	33.7 %	35.2 %
3	FLL	N26° 04' 26.183", W080° 09' 59.192"	6.0 W	130	H	IFPA	NO	Enabled	80.3 %	84 %
4	DHP	N25° 47' 59.866", W080° 20' 56.526"	4.0 W	130	H	IFPA	NO	Enabled	72.6 %	76 %
5	PBI	N26° 40' 48.198", W080° 05' 11.359"	3.0 W	130	H	IFPA	NO	Enabled	46.3 %	48.5 %
6	ZFP	N26° 33' 19.250", W078° 41' 52.250"	3.0 W	130	H	IFPA	NO	Disabled		
7	ZQA	N25° 01' 31.800", W077° 26' 47.100"	6.0 W	130	H	IFPA	NO	Disabled		
8	ZTC	N26° 44' 05.000", W077° 22' 45.000"	5.0 W	130	H	IFPA	NO	Disabled		

Flight Check DME Selection						
Distance [NM]	Selected DMEs					Alternate
0.0						
3.4	VKZ	FLL				
5.0	FLL	PBI	DHP	VKZ		
7.8	FLL	DHP	VKZ			
7.8	FLL	DHP	PBI	VKZ		
8.5	FLL	DHP	VKZ			
9.5	FLL	DHP				
14.1	FLL	PBI	DHP	VKZ		
15.5	FLL	PBI	DHP			
17.9	FLL	PBI	PHK	DHP		

Inertial Drift Segments			
#	Start Location	End Location	Length [NM]
1	N26° 04' 37.030", W080° 10' 01.929"	N26° 04' 33.524", W080° 13' 43.419"	3.3222

# DME DME Assessment Results for BNICE1 path KFL:RW28R:DER\_KBUNK

## Available DMEs by Waypoints

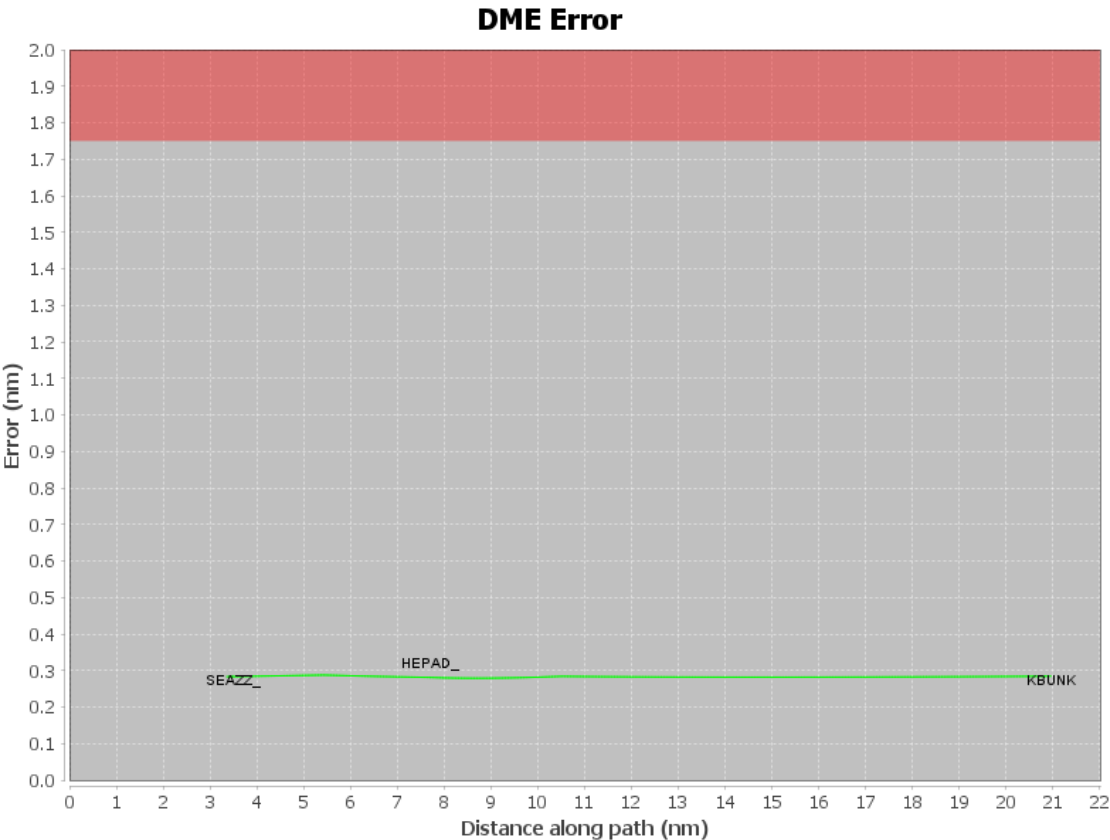
Waypoint Before	Waypoint After	DME List
KFL:RW28R:DER	SEAZZ_	VKZ, FLL
SEAZZ_	HEPAD_	VKZ, PBI, FLL, DHP
HEPAD_	KBUNK	PHK, VKZ, PBI, FLL, DHP

## User Data Files

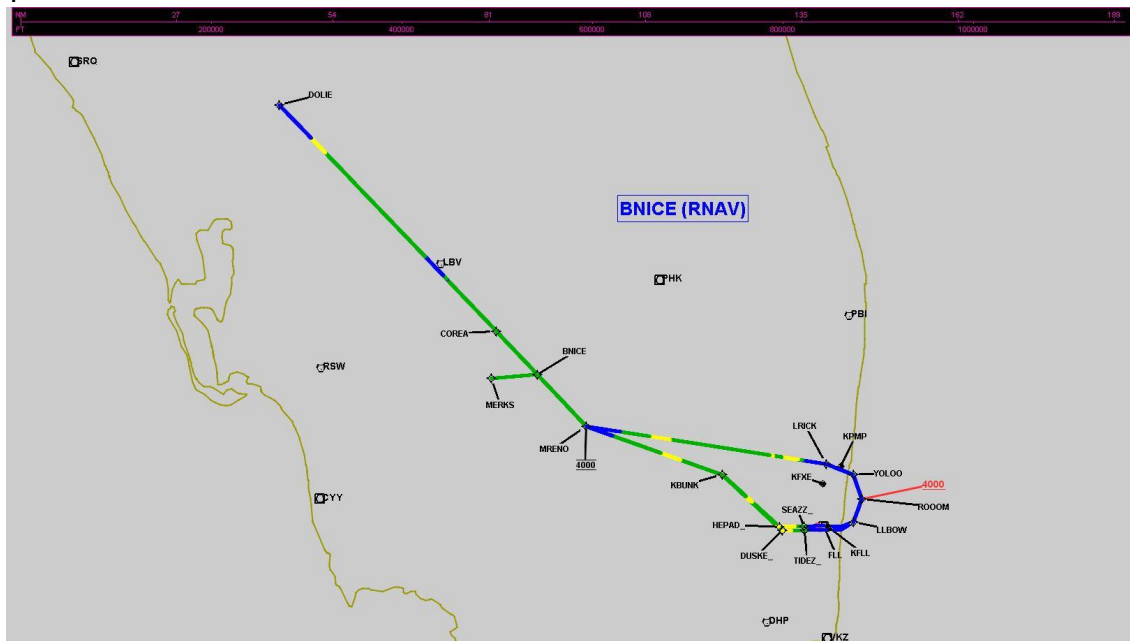
#	File Name
1	UserDMEsKFL [IFPA] BNICE1 SID_20211210_0903 EST.udt

## User DMEs

#	Name	Lat/Lon	MAGVAR	Range	Elevation [ft]	Frequency	Replaces	Status
1	CYY FAA 815803-026 CYY [IFPA]	N26° 09' 12.339", W081° 46' 41.172"	3.0 W	25	8.7	108.6	CYY FAA 815803-026	
ESV:		Bearing [True]: 347.0° to 17.0° Bearing [Mag]: 350.0° to 20.0°				Arc Distance: Out to 65.0 NM Altitude: 3500.0 to 10000.0 ft		
2	SRQ FAA 070100-053 SRQ [IFPA]	N27° 24' 25.256", W082° 33' 49.185"	5.0 W	130	19	117.0	SRQ FAA 070100-053	
ESV:		Bearing [True]: 95.0° to 115.0° Bearing [Mag]: 100.0° to 120.0°				Arc Distance: Out to 60.0 NM Altitude: 3000.0 to 10000.0 ft		

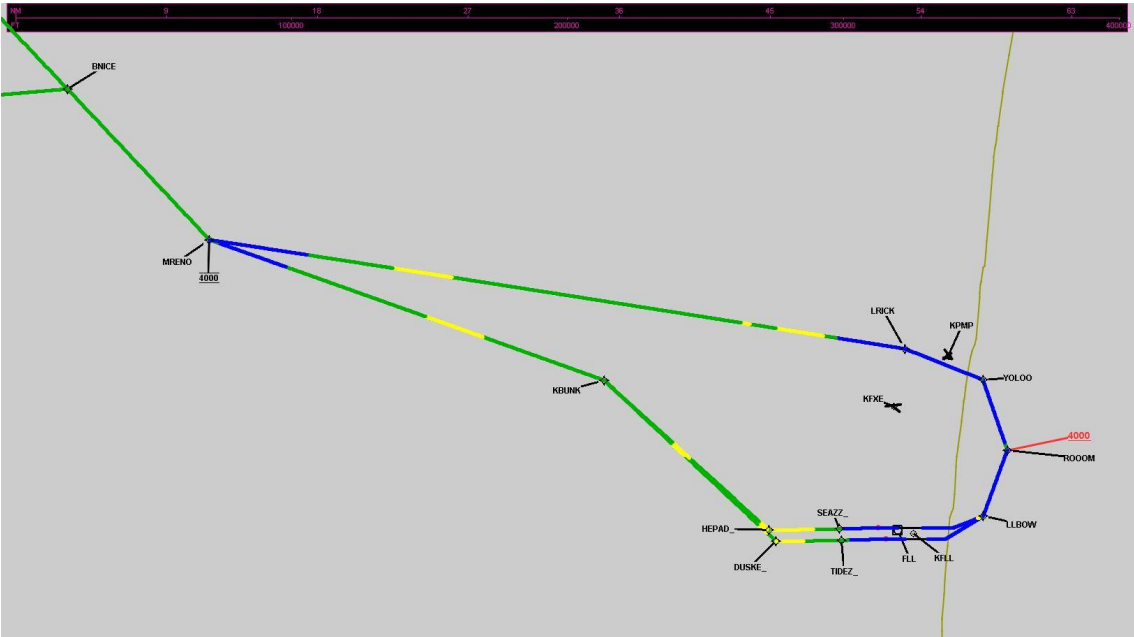


### Graphic Depiction 1



DME DME Assessment Results for BNICE1 path KFL:RW28R:DER\_KBUNK

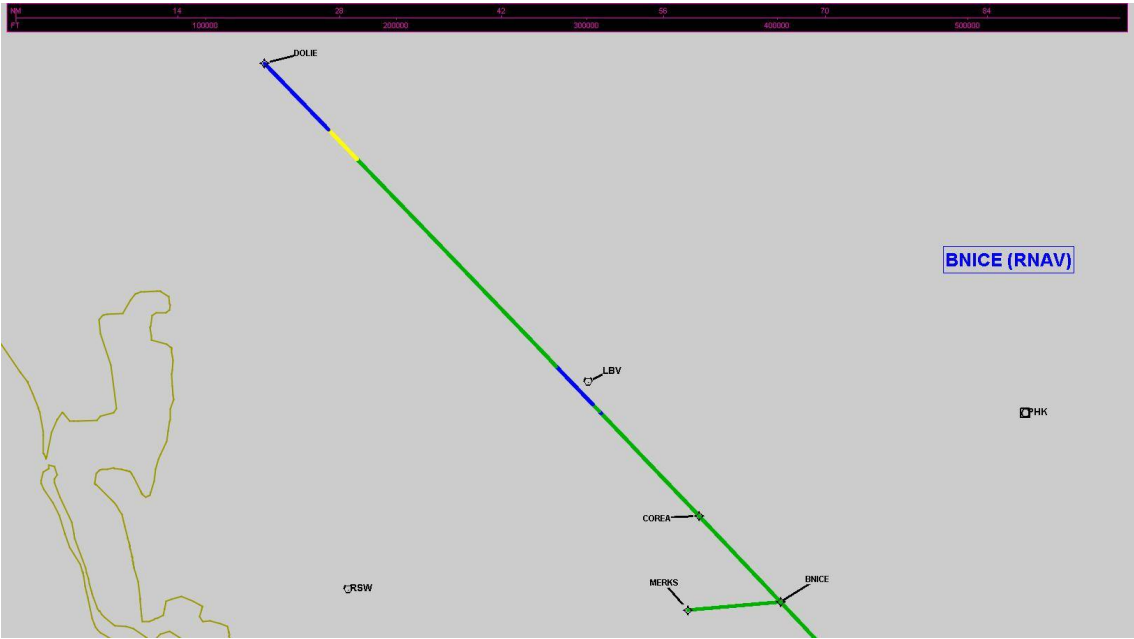
Graphic Depiction 2





DME DME Assessment Results for BNICE1 path KFL:RW28R:DER\_KBUNK

Graphic Depiction 3



## DME DME Assessment Results for BNICE1 path KFL:RW10R:DER\_LLBO

### Results Summary

Flyability:	Completed
DME/DME:	Completed - No Critical DMEs
Name:	Miles CTR Carpenter
Project File:	C:\Users\Miles CTR Carpenter\Desktop\FLMP May 2022 DME Evaluations\KFL\KFL BNICE1 SID DME 20220131_0538 EST\KFL BNICE1 SID DME 20220131.tgs
Output File:	C:\Users\Miles CTR Carpenter\Desktop\FLMP May 2022 DME Evaluations\KFL\KFL [IFPA] BNICE1 20220201_0705 EST\KFL-RW10R-DER_LLBO\KFL BNICE1 SID KFL RW10R LLBO 20220201_0705 EST.pdf
Procedure Name:	BNICE1
Software: DmeDmePlugin:	6.4.1
Date/Time:	02/01/2022 07:05 EST
Databases:	DTED MAX

### Failures

No Failures

### Warnings

No Warnings

### Notes For Flight Check

None

### Flight Plan

Name	Type	Lat/Lon	Altitude (ft)	VNAV Mode	Ground Speed (kts)	Turn Type	Leg Type
KFL:RW10R:DER	WP	N26° 03' 56.672", W080° 08' 02.339"	65	VNAV	130	FLY_BY	TF
LLBO	WP	N26° 05' 18.360", W080° 04' 20.240"	1000	VNAV	200	FLY_BY	TF
Climb Gradient: 500.0 ft/NM up to 580.0 ft MSL 200.0 ft/NM							

### Flyability

Flight Type:	SID
Selected Airport:	KFL [IFPA]
Climb Gradient:	500.0 ft/NM up to 580.0 ft MSL 200.0 ft/NM
Speeds:	130 at the Runway DER
	145 at the end of the VA or VI leg
	200 Ground Speed to 11000 FT
	240 Ground Speed to 18000 FT
	260 Ground Speed to 24000 FT
	340 Ground Speed above 24000 FT
Descent During a Turn:	Allowed
VNAV Mode:	Flight Plan

## DME DME Assessment Results for BNICE1 path KFL:RW10R:DER\_LL BOW

DME/DME	
RNP:	RNP 2
Flight Mode:	Manual
Line of Sight (DTED Level 0 Max):	Evaluated
Inertial Drift:	Enabled
Initial Drift:	0.558 NM
INS Drift Rate:	8.0 NM/Hour
Range Mode:	OSV
RNP Edges:	Evaluated
Min DME Range:	3.0 NM
DME Types:	DME, VOR-DME, VORTAC
DME Include Angles:	30 to 150
Critical DMEs:	Not Allowed
DoD Facilities:	Not included
Foreign Facilities:	Included
High DMEs:	Included
Low DMEs:	Included
Terminal DMEs:	Included
Flight Check DMEs:	Not selected
Higher Altitudes:	Not Evaluated
Near Maximum Altitude:	Not Evaluated
Automatic ESVs:	Not enabled
Disabled DMEs:	ZFP,ZQA,ZTC

DME/DME (Continued)										
DMEs Used										
#	Name	Lat/Lon	MAGVAR	Range	Type	Source	Critical	Status	Time	Distance
1	FLL	N26° 04' 26.183", W080° 09' 59.192"	6.0 W	130	H	IFPA	NO	Enabled	2.6 %	3.2 %
2	PBI	N26° 40' 48.198", W080° 05' 11.359"	3.0 W	130	H	IFPA	NO	Enabled	2.6 %	3.2 %
3	ZFP	N26° 33' 19.250", W078° 41' 52.250"	3.0 W	130	H	IFPA	NO	Disabled		
4	ZQA	N25° 01' 31.800", W077° 26' 47.100"	6.0 W	130	H	IFPA	NO	Disabled		
5	ZTC	N26° 44' 05.000", W077° 22' 45.000"	5.0 W	130	H	IFPA	NO	Disabled		

Flight Check DME Selection						
Distance [NM]	Selected DMEs					Alternate
0.0						
3.6	FLL	PBI				

Inertial Drift Segments			
#	Start Location	End Location	Length [NM]
1	N26° 03' 56.658", W080° 07' 59.972"	N26° 05' 14.628", W080° 04' 27.118"	3.5533

Available DMEs by Waypoints		
Waypoint Before	Waypoint After	DME List
KFL:RW10R:DER	LLBOW	PBI, FLL

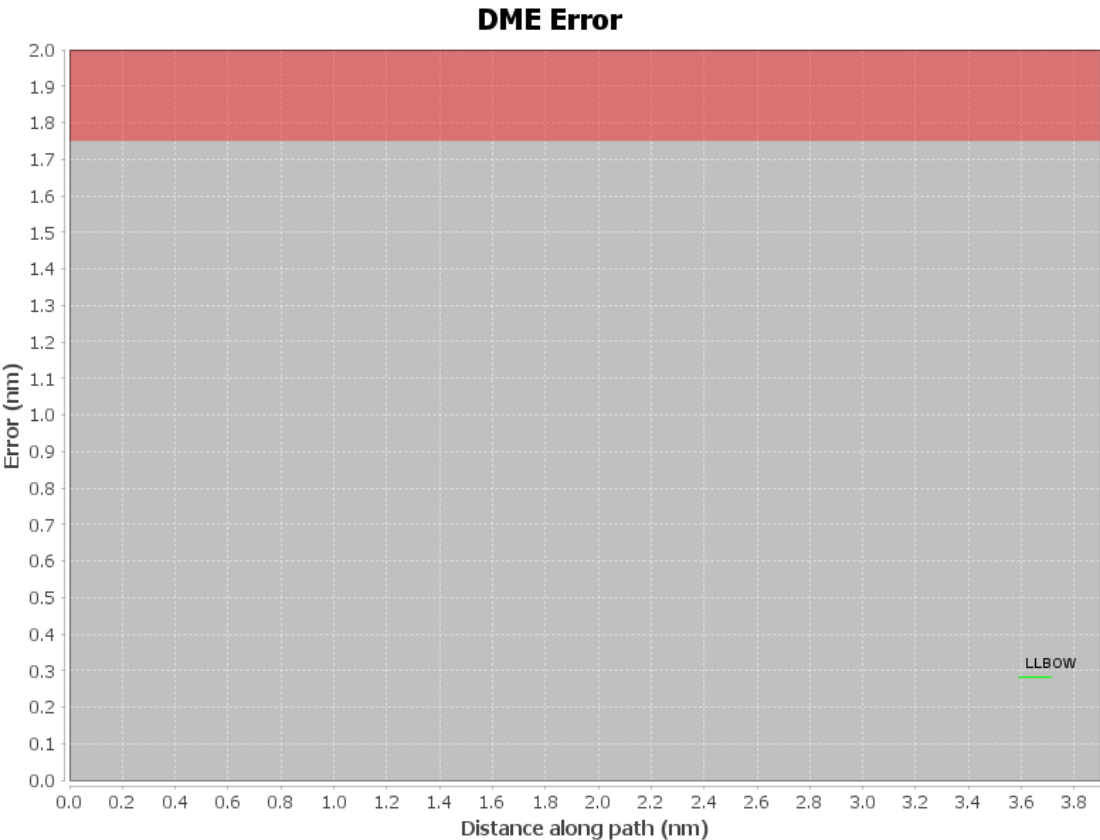
# DME DME Assessment Results for BNICE1 path KFL:RW10R:DER\_LL

## User Data Files

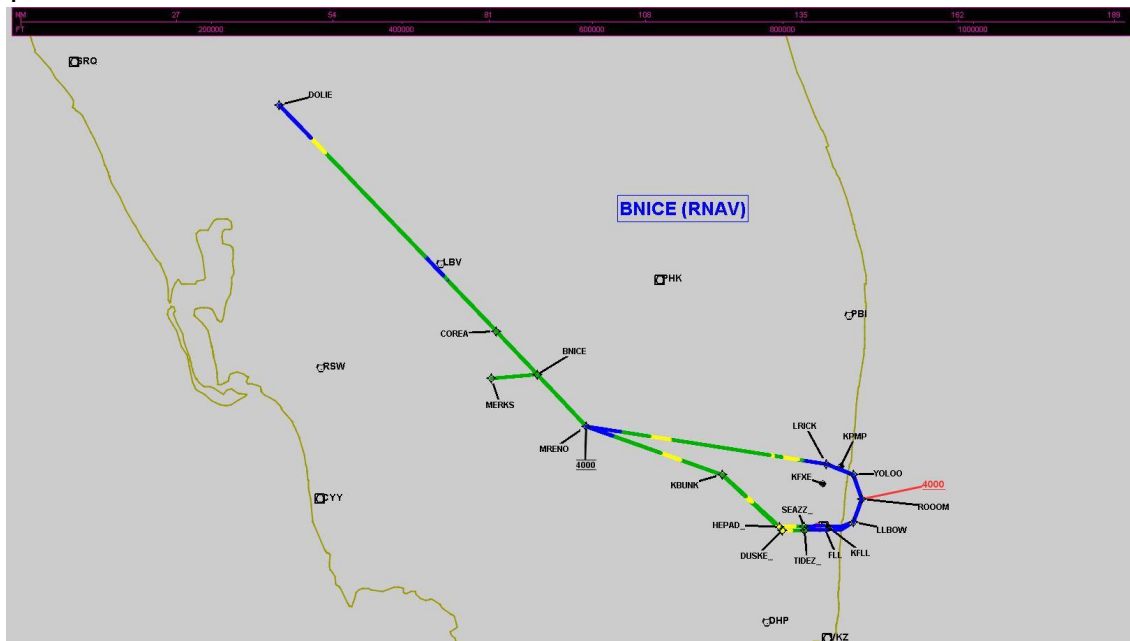
#	File Name
1	UserDMEsKFL [IFPA] BNICE1 SID_20211210_0903 EST.udt

## User DMEs

#	Name	Lat/Lon	MAGVAR	Range	Elevation [ft]	Frequency	Replaces	Status
1	CYY FAA 815803-026 CYY [IFPA]	N26° 09' 12.339", W081° 46' 41.172"	3.0 W	25	8.7	108.6	CYY FAA 815803-026	
ESV:		Bearing [True]: 347.0° to 17.0° Bearing [Mag]: 350.0° to 20.0°				Arc Distance: Out to 65.0 NM Altitude: 3500.0 to 10000.0 ft		
2	SRQ FAA 070100-053 SRQ [IFPA]	N27° 24' 25.256", W082° 33' 49.185"	5.0 W	130	19	117.0	SRQ FAA 070100-053	
ESV:		Bearing [True]: 95.0° to 115.0° Bearing [Mag]: 100.0° to 120.0°				Arc Distance: Out to 60.0 NM Altitude: 3000.0 to 10000.0 ft		

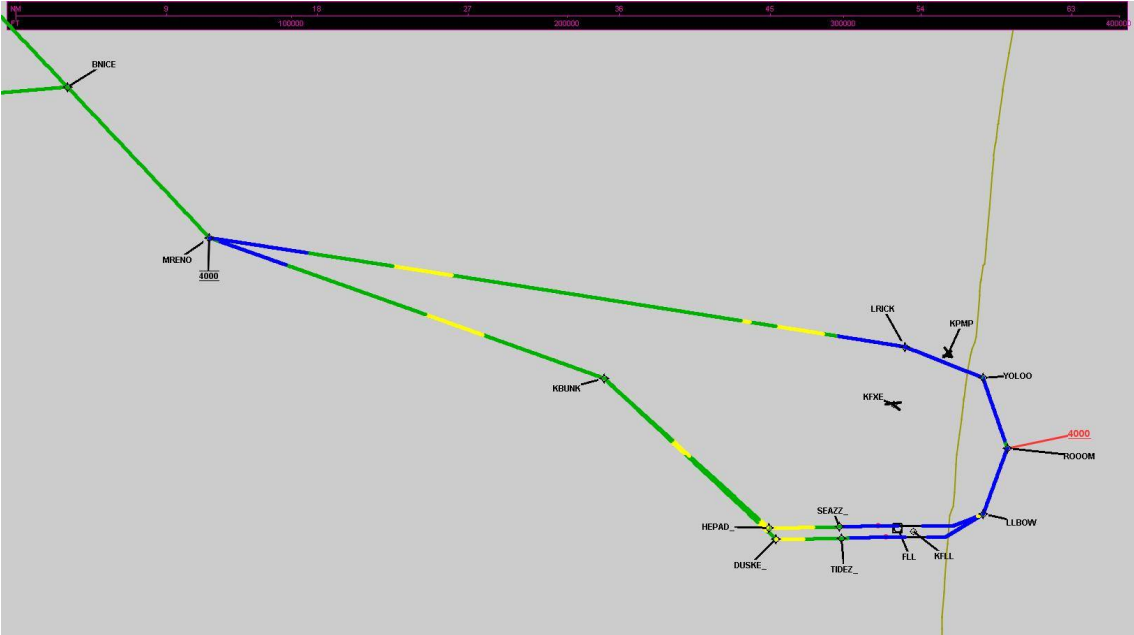


### Graphic Depiction 1



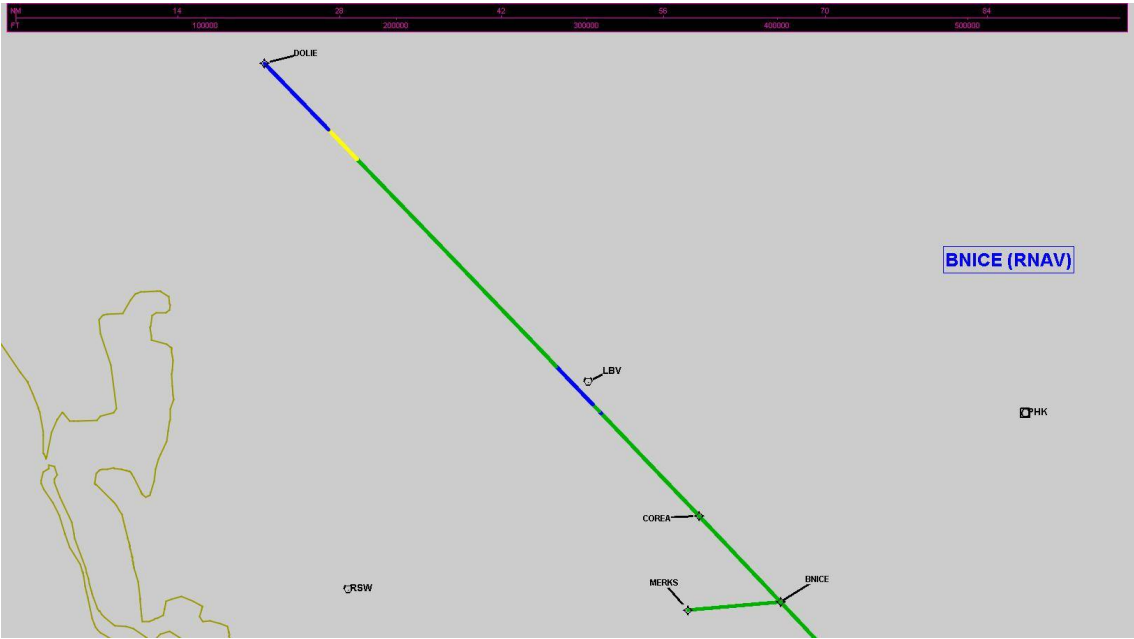
DME DME Assessment Results for BNICE1 path KFL:RW10R:DER\_LLBO

Graphic Depiction 2



DME DME Assessment Results for BNICE1 path KFL:RW10R:DER\_LLBOV

Graphic Depiction 3





## DME DME Assessment Results for BNICE1 path KFL:RW10L:DER\_DOLIE

### Results Summary

Flyability:	Completed
DME/DME:	Completed - No Critical DMEs
Name:	Miles CTR Carpenter
Project File:	C:\Users\Miles CTR Carpenter\Desktop\FLMP May 2022 DME Evaluations\KFL\KFL BNICE1 SID DME 20220131_0538 EST\KFL BNICE1 SID DME 20220131.tgs
Output File:	C:\Users\Miles CTR Carpenter\Desktop\FLMP May 2022 DME Evaluations\KFL\KFL [IFPA] BNICE1 20220201_0705 EST\KFL-RW10L-DER_DOLIE\KFL BNICE1 SID KFL RW10L DOLIE 20220201_0705 EST.pdf
Procedure Name:	BNICE1
Software: DmeDmePlugin:	6.4.1
Date/Time:	02/01/2022 07:05 EST
Databases:	DTED MAX

### Failures

No Failures

### Warnings

No Warnings

### Notes For Flight Check

None

### Flight Plan

Name	Type	Lat/Lon	Altitude (ft)	VNAV Mode	Ground Speed (kts)	Turn Type	Leg Type
KFL:RW10L:DER	WP	N26° 04' 36.451", W080° 08' 20.835"	5.5	VNAV	130	FLY_BY	TF
LLBOW	WP	N26° 05' 18.360", W080° 04' 20.240"	1000	VNAV	200	FLY_BY	TF
ROOOM	WP	N26° 09' 14.710", W080° 02' 44.550"	1800	VNAV	200	FLY_BY	TF
YOLOO	WP	N26° 13' 25.670", W080° 04' 21.650"	2500	VNAV	200	FLY_BY	TF
LRICK	WP	N26° 15' 15.980", W080° 09' 31.190"	3500	VNAV	200	FLY_BY	TF
MRENO	WP	N26° 21' 45.030", W080° 55' 37.060"	4000	VNAV	200	FLY_BY	TF
BNICE	WP	N26° 30' 43.070", W081° 05' 01.950"	4000	VNAV	200	FLY_BY	TF
COREA	WP	N26° 38' 08.960", W081° 12' 52.290"	4000	VNAV	200	FLY_BY	TF
DOLIE	WP	N27° 17' 08.210", W081° 54' 36.170"	4000	VNAV	200	FLY_BY	TF

Climb Gradient:  
500.0 ft/NM up to 580.0 ft MSL  
200.0 ft/NM

### Flyability

Flight Type:	SID
Selected Airport:	KFL [IFPA]
Climb Gradient:	500.0 ft/NM up to 580.0 ft MSL 200.0 ft/NM
Speeds:	130 at the Runway DER
	145 at the end of the VA or VI leg
	200 Ground Speed to 11000 FT
	240 Ground Speed to 18000 FT
	260 Ground Speed to 24000 FT
	340 Ground Speed above 24000 FT
Descent During a Turn:	Allowed
VNAV Mode:	Flight Plan

## DME DME Assessment Results for BNICE1 path KLL:RW10L:DER\_DOLIE

DME/DME	
RNP:	RNP 2
Flight Mode:	Manual
Line of Sight (DTED Level 0 Max):	Evaluated
Inertial Drift:	Enabled
Initial Drift:	0.558 NM
INS Drift Rate:	8.0 NM/Hour
Range Mode:	OSV
RNP Edges:	Evaluated
Min DME Range:	3.0 NM
DME Types:	DME, VOR-DME, VORTAC
DME Include Angles:	30 to 150
Critical DMEs:	Not Allowed
DoD Facilities:	Not included
Foreign Facilities:	Included
High DMEs:	Included
Low DMEs:	Included
Terminal DMEs:	Included
Flight Check DMEs:	Not selected
Higher Altitudes:	Not Evaluated
Near Maximum Altitude:	Not Evaluated
Automatic ESVs:	Not enabled
Disabled DMEs:	ZFP,ZQA,ZTC

DME/DME (Continued)										
DMEs Used										
#	Name	Lat/Lon	MAGVAR	Range	Type	Source	Critical	Status	Time	Distance
1	CYY	N26° 09' 12.339", W081° 46' 41.172"	3.0 W	25	T	IFPA	NO	Enabled	14.7 %	14.9 %
2	PHK	N26° 46' 57.873", W080° 41' 29.157"	0.0 E	130	H	IFPA	NO	Enabled	44.4 %	44.7 %
3	SRQ	N27° 24' 25.256", W082° 33' 49.185"	5.0 W	130	H	IFPA	NO	Enabled	3.5 %	3.6 %
4	VKZ	N25° 45' 06.846", W080° 09' 15.996"	4.0 W	130	H	IFPA	NO	Enabled	8.5 %	8.5 %
5	LBV	N26° 49' 41.466", W081° 23' 29.178"	1.0 E	40	L	IFPA	NO	Enabled	45.9 %	46.3 %
6	FLL	N26° 04' 26.183", W080° 09' 59.192"	6.0 W	130	H	IFPA	NO	Enabled	23.8 %	23.9 %
7	RSW	N26° 31' 47.551", W081° 46' 32.764"	2.0 W	40	L	IFPA	NO	Enabled	37.3 %	37.7 %
8	DHP	N25° 47' 59.866", W080° 20' 56.526"	4.0 W	130	H	IFPA	NO	Enabled	18.9 %	19 %
9	PBI	N26° 40' 48.198", W080° 05' 11.359"	3.0 W	130	H	IFPA	NO	Enabled	19.8 %	19.9 %
10	ZFP	N26° 33' 19.250", W078° 41' 52.250"	3.0 W	130	H	IFPA	NO	Disabled		
11	ZQA	N25° 01' 31.800", W077° 26' 47.100"	6.0 W	130	H	IFPA	NO	Disabled		
12	ZTC	N26° 44' 05.000", W077° 22' 45.000"	5.0 W	130	H	IFPA	NO	Disabled		

# DME DME Assessment Results for BNICE1 path KFLL:RW10L:DER\_DOLIE

Flight Check DME Selection						
Distance [NM]	Selected DMEs					Alternate
0.0						
3.4	FLL	PBI	VKZ	DHP		
3.8						
8.0	FLL	PBI				
8.3						
12.4	DHP	PBI				
12.5						
21.4	FLL	PBI				
22.3	PHK	PBI	DHP	FLL		
22.6	PHK	PBI	DHP	FLL	VKZ	
33.9	FLL	PBI	PHK	DHP		
44.3	PHK	FLL				
44.6	DHP	PBI	FLL	PHK		
48.2	PHK	FLL				
53.3						
59.3	PHK	LBV				
71.7	PHK	LBV	RSW			
88.3	RSW	LBV				
93.9						
94.2	PHK	RSW				
94.9						
99.5	RSW	LBV				
107.5	RSW	LBV	CYY			
122.9	SRQ	RSW	CYY	LBV		
127.8						

Inertial Drift Segments				
#	Start Location	End Location	Length [NM]	
1	N26° 04' 36.437", W080° 08' 18.442"	N26° 05' 10.693", W080° 04' 42.358"	3.3463	
2	N26° 05' 18.360", W080° 04' 20.240"	N26° 09' 14.710", W080° 02' 44.550"	4.1918	
3	N26° 09' 36.670", W080° 02' 53.042"	N26° 13' 25.670", W080° 04' 21.650"	4.0406	
4	N26° 13' 28.123", W080° 04' 28.527"	N26° 15' 54.777", W080° 14' 02.124"	8.974	
5	N26° 20' 50.797", W080° 49' 04.776"	N26° 21' 45.030", W080° 55' 37.060"	5.9285	
6	N26° 46' 55.779", W081° 22' 12.522"	N26° 47' 07.855", W081° 22' 25.388"	0.2777	
7	N26° 47' 41.665", W081° 23' 01.418"	N26° 50' 59.643", W081° 26' 32.566"	4.5538	
8	N27° 11' 26.552", W081° 48' 27.820"	N27° 17' 08.210", W081° 54' 36.170"	7.8858	

Available DMEs by Waypoints		
Waypoint Before	Waypoint After	DME List
KFLL:RW10L:DER	LLBOW	VKZ, PBI, FLL, DHP
LLBOW	ROOOM	
ROOOM	YOLOO	PBI, FLL
YOLOO	LRICK	PBI, DHP
LRICK	MRENO	PHK, VKZ, PBI, FLL, DHP
MRENO	BNICE	LBV, PHK
BNICE	COREA	LBV, PHK, RSW
COREA	DOLIE	LBV, PHK, CYY, SRQ, RSW

# DME DME Assessment Results for BNICE1 path KFL:RW10L:DER\_DOLIE

## User Data Files

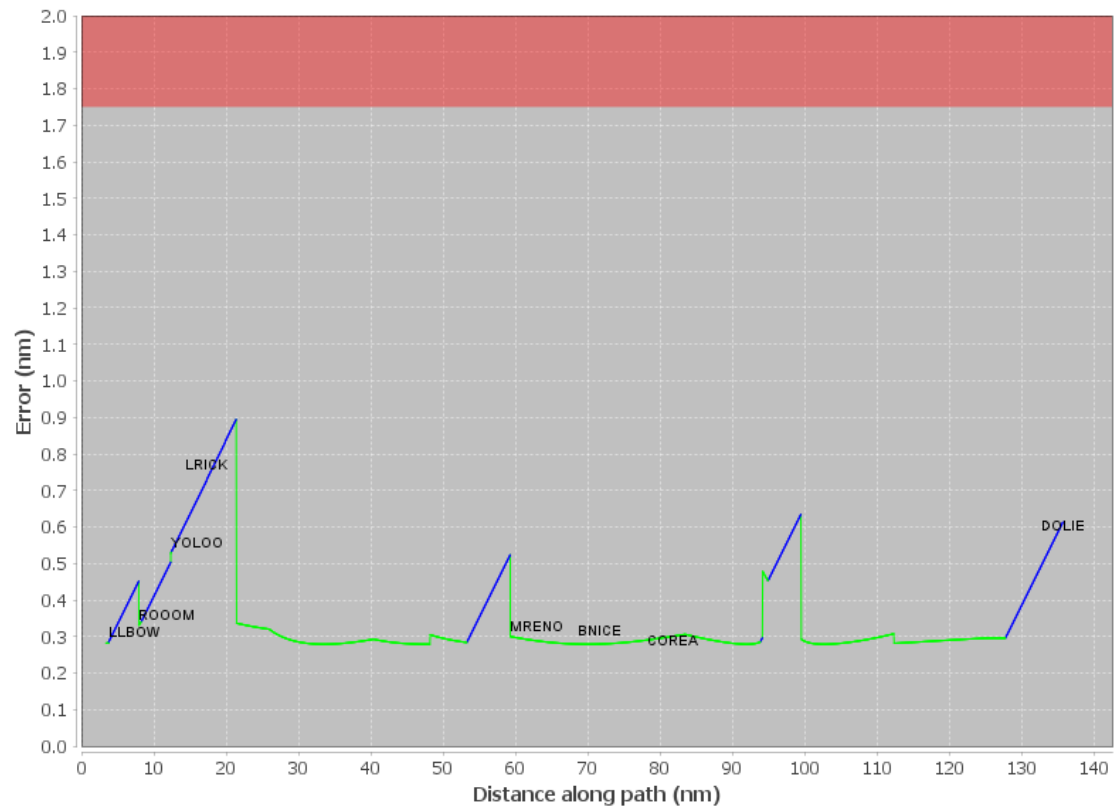
#	File Name
1	UserDMEsKFL [IFPA] BNICE1 SID_20211210_0903 EST.udt

## User DMEs

#	Name	Lat/Lon	MAGVAR	Range	Elevation [ft]	Frequency	Replaces	Status
1	CYY FAA 815803-026 CYY [IFPA]	N26° 09' 12.339", W081° 46' 41.172"	3.0 W	25	8.7	108.6	CYY FAA 815803-026	
ESV:		Bearing [True]: 347.0° to 17.0° Bearing [Mag]: 350.0° to 20.0°				Arc Distance: Out to 65.0 NM Altitude: 3500.0 to 10000.0 ft		
2	SRQ FAA 070100-053 SRQ [IFPA]	N27° 24' 25.256", W082° 33' 49.185"	5.0 W	130	19	117.0	SRQ FAA 070100-053	
ESV:		Bearing [True]: 95.0° to 115.0° Bearing [Mag]: 100.0° to 120.0°				Arc Distance: Out to 60.0 NM Altitude: 3000.0 to 10000.0 ft		

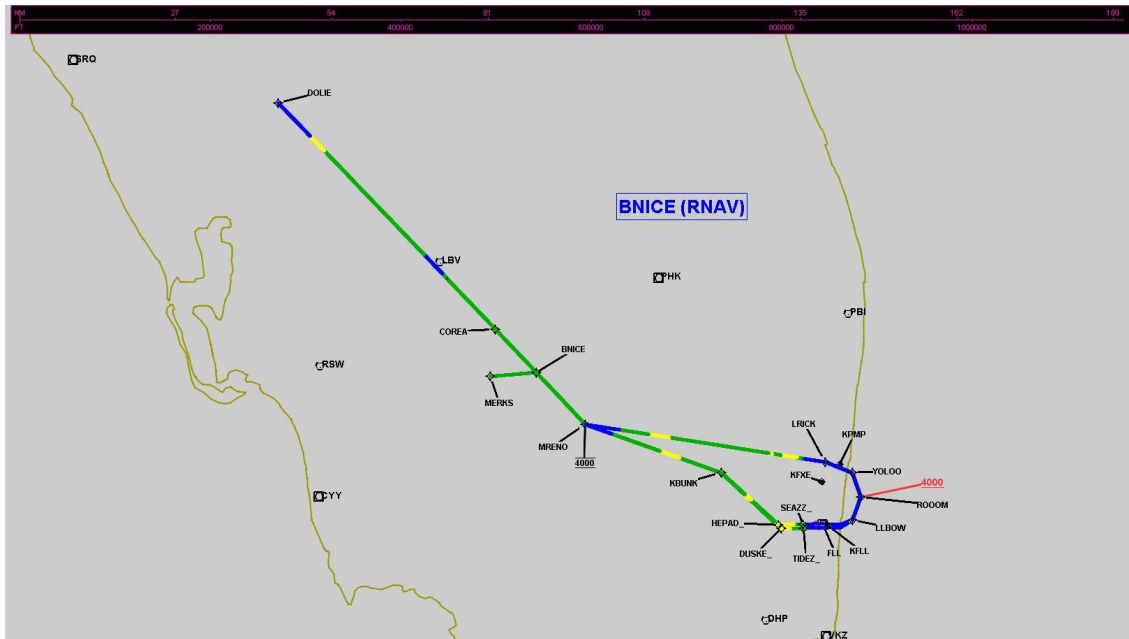
## DME DME Assessment Results for BNICE1 path KFL:RW10L:DER\_DOLIE

### DME Error



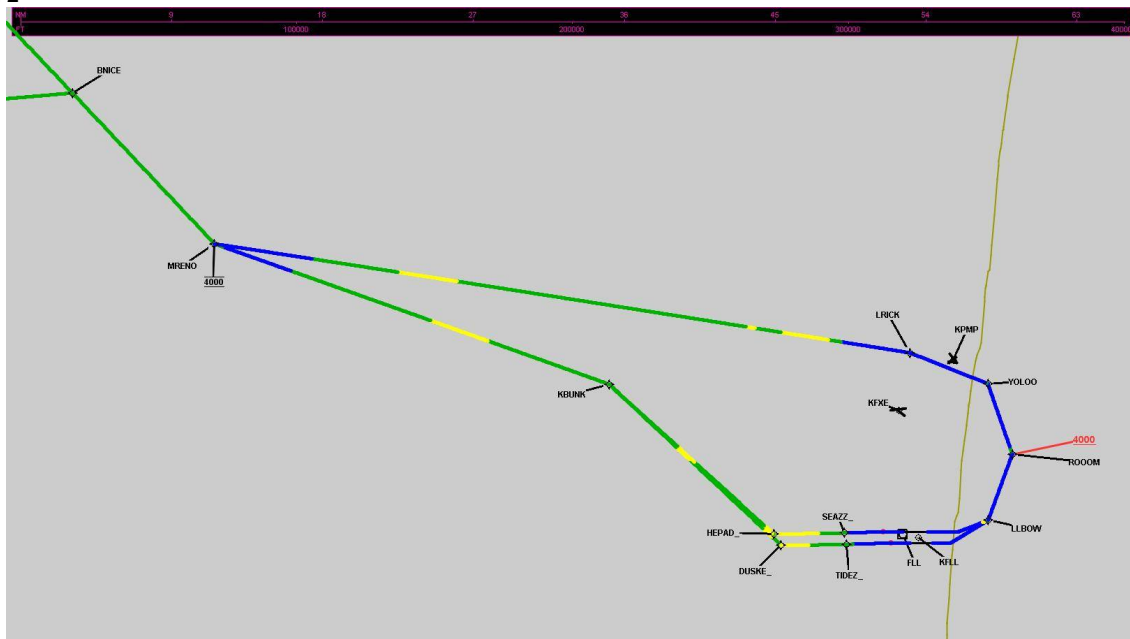
# DME DME Assessment Results for BNICE1 path KFL:RW10L:DER\_DOLIE

Graphic Depiction 1



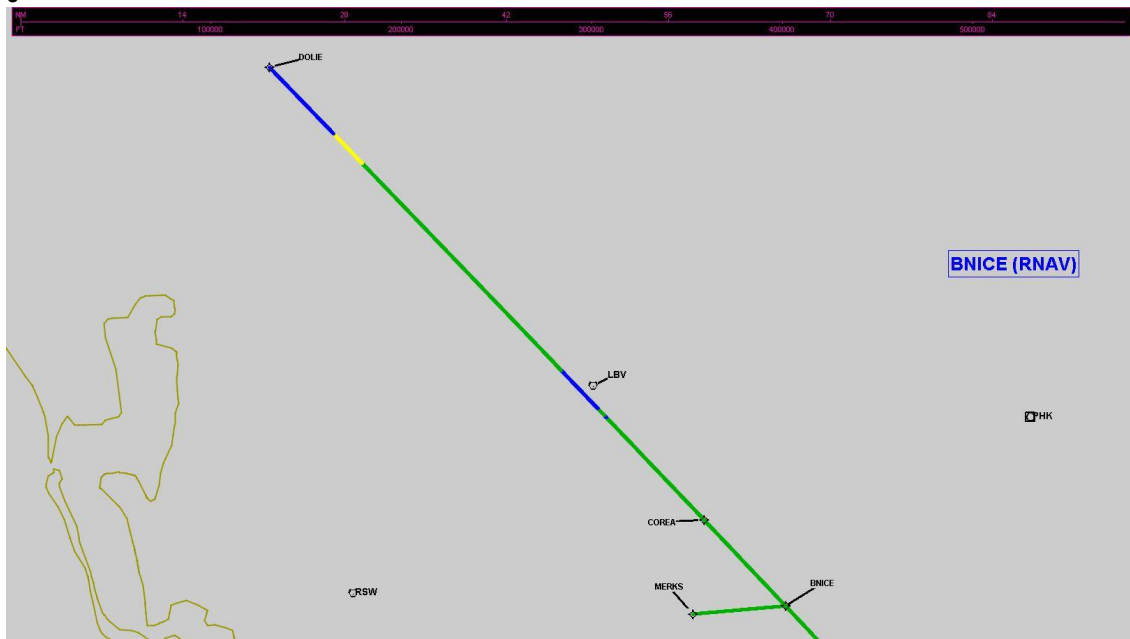
## DME DME Assessment Results for BNICE1 path KFL:RW10L:DER\_DOLIE

Graphic Depiction 2



# DME DME Assessment Results for BNICE1 path KFL:RW10L:DER\_DOLIE

Graphic Depiction 3





## DME DME Assessment Results for BNICE1 path KFL:RW28L:DER\_MRENO

### Results Summary

Flyability:	Completed
DME/DME:	Completed - No Critical DMEs
Name:	Miles CTR Carpenter
Project File:	C:\Users\Miles CTR Carpenter\Desktop\FLMP May 2022 DME Evaluations\KFL\KFL BNICE1 SID DME 20220131_0538 EST\KFL BNICE1 SID DME 20220131.tgs
Output File:	C:\Users\Miles CTR Carpenter\Desktop\FLMP May 2022 DME Evaluations\KFL\KFL [IFPA] BNICE1 20220201_0705 EST\KFL-RW28L-DER_MRENO\KFL BNICE1 SID KFL RW28L MRENO 20220201_0705 EST.pdf
Procedure Name:	BNICE1
Software: DmeDmePlugin:	6.4.1
Date/Time:	02/01/2022 07:05 EST
Databases:	DTED MAX

### Failures

No Failures

### Warnings

No Warnings

### Notes For Flight Check

None

### Flight Plan

Name	Type	Lat/Lon	Altitude (ft)	VNAV Mode	Ground Speed (kts)	Turn Type	Leg Type
KFL:RW28L:DER	WP	N26° 03' 57.192", W080° 09' 30.056"	10.1	VNAV	130	FLY_OVER	TF
TIDEZ_	WP	N26° 03' 52.613", W080° 13' 43.441"	1000	VNAV	200	FLY_BY	TF
DUSKE_	WP	N26° 03' 48.326", W080° 18' 03.188"	1800	VNAV	200	FLY_BY	TF
KBUNK	WP	N26° 13' 23.910", W080° 29' 28.010"	4000	VNAV	200	FLY_BY	TF
MRENO	WP	N26° 21' 45.030", W080° 55' 37.060"	4000	VNAV	200	FLY_BY	TF
Climb Gradient: 500.0 ft/NM up to 580.0 ft MSL 200.0 ft/NM							

### Flyability

Flight Type:	SID
Selected Airport:	KFL [IFPA]
Climb Gradient:	500.0 ft/NM up to 580.0 ft MSL 200.0 ft/NM
Speeds:	130 at the Runway DER
	145 at the end of the VA or VI leg
	200 Ground Speed to 11000 FT
	240 Ground Speed to 18000 FT
	260 Ground Speed to 24000 FT
	340 Ground Speed above 24000 FT
Descent During a Turn:	Allowed
VNAV Mode:	Flight Plan

## DME DME Assessment Results for BNICE1 path KFL:RW28L:DER\_MRENO

DME/DME	
RNP:	RNP 2
Flight Mode:	Manual
Line of Sight (DTED Level 0 Max):	Evaluated
Inertial Drift:	Enabled
Initial Drift:	0.558 NM
INS Drift Rate:	8.0 NM/Hour
Range Mode:	OSV
RNP Edges:	Evaluated
Min DME Range:	3.0 NM
DME Types:	DME, VOR-DME, VORTAC
DME Include Angles:	30 to 150
Critical DMEs:	Not Allowed
DoD Facilities:	Not included
Foreign Facilities:	Included
High DMEs:	Included
Low DMEs:	Included
Terminal DMEs:	Included
Flight Check DMEs:	Not selected
Higher Altitudes:	Not Evaluated
Near Maximum Altitude:	Not Evaluated
Automatic ESVs:	Not enabled
Disabled DMEs:	ZFP,ZQA,ZTC

DME/DME (Continued)										
DMEs Used										
#	Name	Lat/Lon	MAGVAR	Range	Type	Source	Critical	Status	Time	Distance
1	PHK	N26° 46' 57.873", W080° 41' 29.157"	0.0 E	130	H	IFPA	NO	Enabled	49.6 %	50.7 %
2	VKZ	N25° 45' 06.846", W080° 09' 15.996"	4.0 W	130	H	IFPA	NO	Enabled	14.6 %	14.9 %
3	LBV	N26° 49' 41.466", W081° 23' 29.178"	1.0 E	40	L	IFPA	NO	Enabled	1.2 %	1.2 %
4	FLL	N26° 04' 26.183", W080° 09' 59.192"	6.0 W	130	H	IFPA	NO	Enabled	80.4 %	82.1 %
5	DHP	N25° 47' 59.866", W080° 20' 56.526"	4.0 W	130	H	IFPA	NO	Enabled	64 %	65.4 %
6	PBI	N26° 40' 48.198", W080° 05' 11.359"	3.0 W	130	H	IFPA	NO	Enabled	33.7 %	34.5 %
7	ZFP	N26° 33' 19.250", W078° 41' 52.250"	3.0 W	130	H	IFPA	NO	Disabled		
8	ZQA	N25° 01' 31.800", W077° 26' 47.100"	6.0 W	130	H	IFPA	NO	Disabled		
9	ZTC	N26° 44' 05.000", W077° 22' 45.000"	5.0 W	130	H	IFPA	NO	Disabled		

# DME DME Assessment Results for BNICE1 path KFL:RW28L:DER\_MRENO

## Flight Check DME Selection

Distance [NM]	Selected DMEs					Alternate
0.0						
3.4	VKZ	FLL				
6.1	VKZ	FLL	PBI	DHP		
7.8	FLL	DHP	VKZ			
8.5	FLL	DHP	PBI	VKZ		
9.2	FLL	DHP	VKZ			
9.4	FLL	DHP				
15.2	FLL	PBI	DHP	VKZ		
16.2	FLL	PBI	DHP			
18.6	FLL	PBI	PHK	DHP		
25.5	PHK	FLL	DHP			
29.4	DHP	PBI	FLL	PHK		
33.0	PHK	FLL	DHP			
34.7	PHK	FLL				
35.0	PHK	FLL	DHP			
37.0	PHK	FLL				
41.8						
46.1	PHK	LBV				

## Inertial Drift Segments

#	Start Location	End Location	Length [NM]
1	N26° 03' 57.206", W080° 09' 32.429"	N26° 03' 53.365", W080° 13' 16.958"	3.3683
2	N26° 20' 07.192", W080° 50' 29.245"	N26° 21' 33.921", W080° 55' 02.074"	4.3316

## Available DMEs by Waypoints

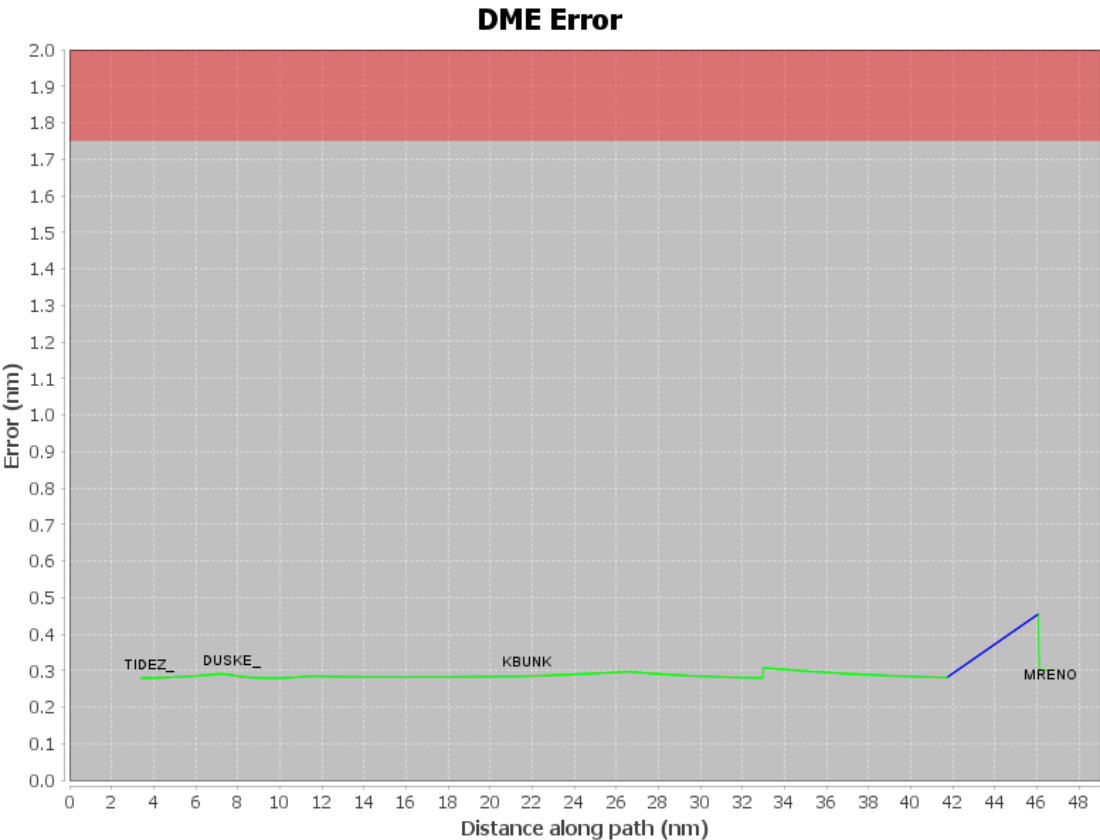
Waypoint Before	Waypoint After	DME List
KFL:RW28L:DER	TIDEZ_	VKZ, FLL
TIDEZ_	DUSKE_	VKZ, PBI, FLL, DHP
DUSKE_	KBUNK	PHK, VKZ, PBI, FLL, DHP
KBUNK	MRENO	LBV, PHK, PBI, FLL, DHP

## User Data Files

#	File Name
1	UserDMEsKFL [IFPA] BNICE1 SID_20211210_0903 EST.udt

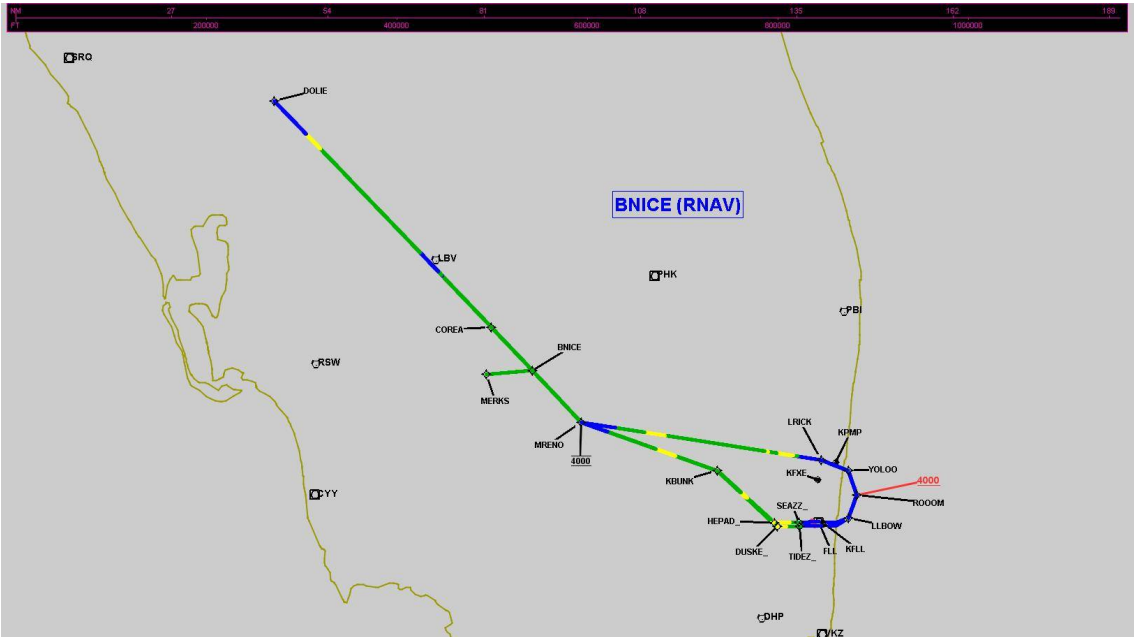
## User DMEs

#	Name	Lat/Lon	MAGVAR	Range	Elevation [ft]	Frequency	Replaces	Status
1	CYY FAA 815803-026 CYY [IFPA]	N26° 09' 12.339", W081° 46' 41.172"	3.0 W	25	8.7	108.6	CYY FAA 815803-026	
ESV:		Bearing [True]: 347.0° to 17.0° Bearing [Mag]: 350.0° to 20.0°				Arc Distance: Out to 65.0 NM Altitude: 3500.0 to 10000.0 ft		
2	SRQ FAA 070100-053 SRQ [IFPA]	N27° 24' 25.256", W082° 33' 49.185"	5.0 W	130	19	117.0	SRQ FAA 070100-053	
ESV:		Bearing [True]: 95.0° to 115.0° Bearing [Mag]: 100.0° to 120.0°				Arc Distance: Out to 60.0 NM Altitude: 3000.0 to 10000.0 ft		



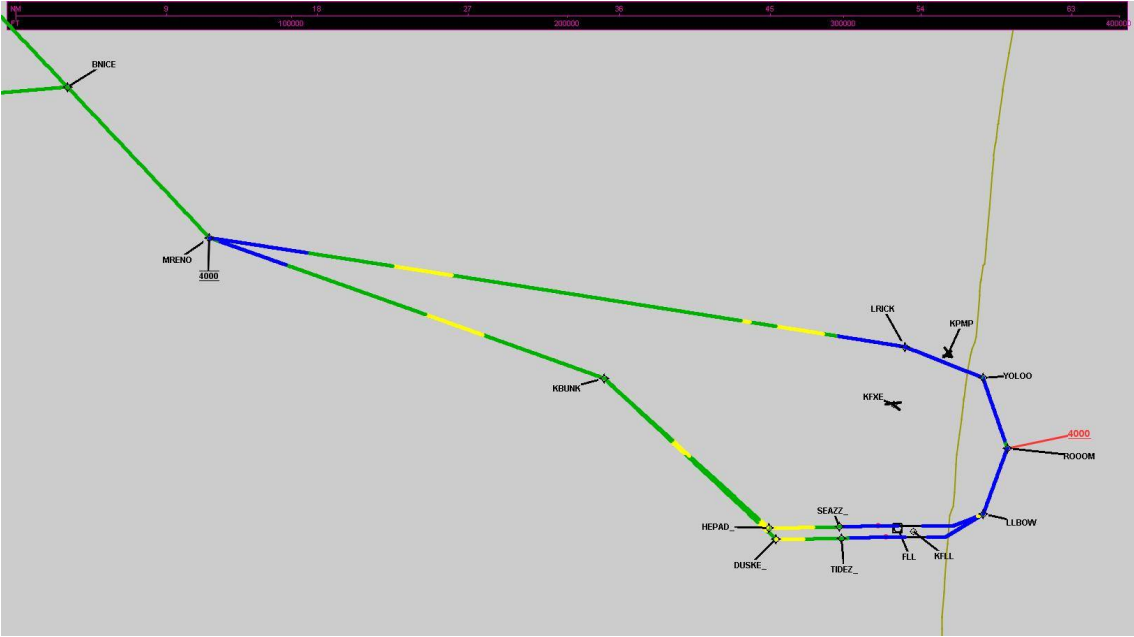
DME DME Assessment Results for BNICE1 path KFL:RW28L:DER\_MRENO

Graphic Depiction 1



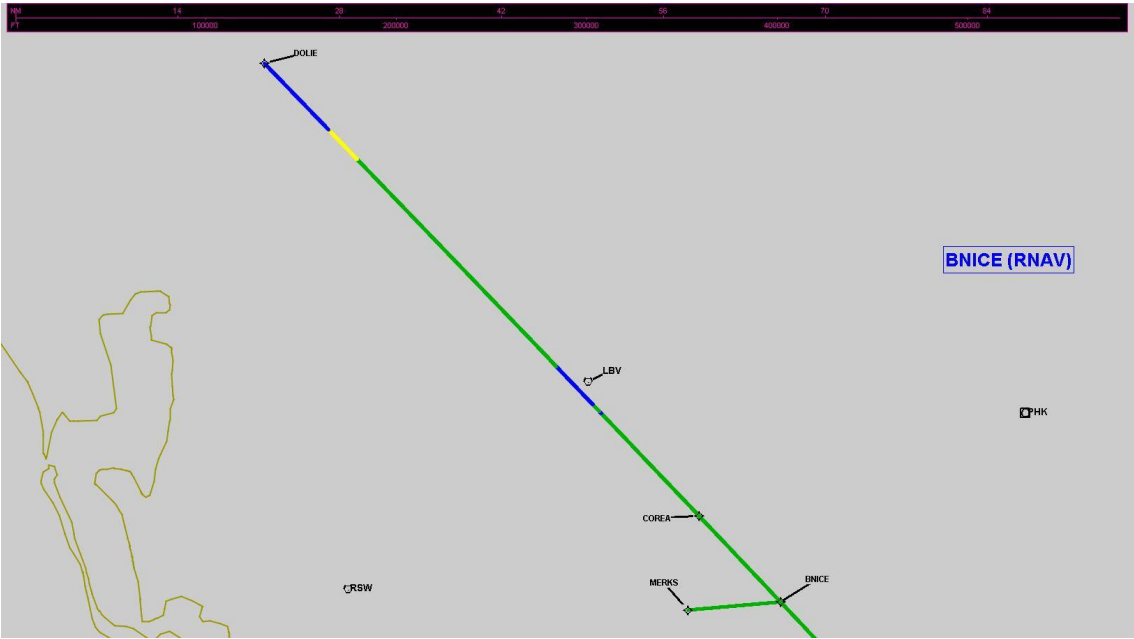
DME DME Assessment Results for BNICE1 path KFL:RW28L:DER\_MRENO

Graphic Depiction 2



DME DME Assessment Results for BNICE1 path KFL:RW28L:DER\_MRENO

Graphic Depiction 3



## DME DME Assessment Results for BNICE1 path BNICE\_MERKS

### Results Summary

Flyability:	Completed
DME/DME:	Completed - No Critical DMEs
Name:	Miles CTR Carpenter
Project File:	C:\Users\Miles CTR Carpenter\Desktop\FLMP May 2022 DME Evaluations\KFL\KFL BNICE1 SID DME 20220131_0538 EST\KFL BNICE1 SID DME 20220131.tgs
Output File:	C:\Users\Miles CTR Carpenter\Desktop\FLMP May 2022 DME Evaluations\KFL\KFL [IFPA] BNICE1 20220201_0705 EST\BNICE_MERKS\KFL BNICE1 SID BNICE MERKS 20220201_0705 EST.pdf
Procedure Name:	BNICE1
Software: DmeDmePlugin:	6.4.1
Date/Time:	02/01/2022 07:05 EST
Databases:	DTED MAX

### Failures

No Failures

### Warnings

No Warnings

### Notes For Flight Check

None

### Flight Plan

Name	Type	Lat/Lon	Altitude (ft)	VNAV Mode	Ground Speed (kts)	Turn Type	Leg Type
BNICE	WP	N26° 30' 43.070", W081° 05' 01.950"	4000	VNAV	200	FLY_BY	TF
MERKS	WP	N26° 30' 01.290", W081° 13' 55.410"	4000	VNAV	200	FLY_BY	TF

### Flyability

Flight Type:	SID
Selected Airport:	KFL [IFPA]
Climb Gradient:	None assigned
Speeds:	130 at the Runway DER
	145 at the end of the VA or VI leg
	200 Ground Speed to 11000 FT
	240 Ground Speed to 18000 FT
	260 Ground Speed to 24000 FT
	340 Ground Speed above 24000 FT
Descent During a Turn:	Allowed
VNAV Mode:	Flight Plan



## DME DME Assessment Results for BNICE1 path BNICE\_MERKS

DME/DME	
RNP:	RNP 2
Flight Mode:	Manual
Line of Sight (DTED Level 0 Max):	Evaluated
Inertial Drift:	Enabled
Initial Drift:	0.558 NM
INS Drift Rate:	8.0 NM/Hour
Range Mode:	OSV
RNP Edges:	Evaluated
Min DME Range:	3.0 NM
DME Types:	DME, VOR-DME, VORTAC
DME Include Angles:	30 to 150
Critical DMEs:	Not Allowed
DoD Facilities:	Not included
Foreign Facilities:	Included
High DMEs:	Included
Low DMEs:	Included
Terminal DMEs:	Included
Flight Check DMEs:	Not selected
Higher Altitudes:	Not Evaluated
Near Maximum Altitude:	Not Evaluated
Automatic ESVs:	Not enabled
Disabled DMEs:	ZFP,ZQA,ZTC

DME/DME (Continued)										
DMEs Used										
#	Name	Lat/Lon	MAGVAR	Range	Type	Source	Critical	Status	Time	Distance
1	PHK	N26° 46' 57.873", W080° 41' 29.157"	0.0 E	130	H	IFPA	NO	Enabled	100 %	100 %
2	LBV	N26° 49' 41.466", W081° 23' 29.178"	1.0 E	40	L	IFPA	NO	Enabled	100 %	100 %
3	RSW	N26° 31' 47.551", W081° 46' 32.764"	2.0 W	40	L	IFPA	NO	Enabled	100 %	100 %
4	ZFP	N26° 33' 19.250", W078° 41' 52.250"	3.0 W	130	H	IFPA	NO	Disabled		
5	ZQA	N25° 01' 31.800", W077° 26' 47.100"	6.0 W	130	H	IFPA	NO	Disabled		
6	ZTC	N26° 44' 05.000", W077° 22' 45.000"	5.0 W	130	H	IFPA	NO	Disabled		

Flight Check DME Selection						
Distance [NM]	Selected DMEs					Alternate
0.0	PHK	LBV	RSW			

Inertial Drift Segments			
#	Start Location	End Location	Length [NM]

Available DMEs by Waypoints		
Waypoint Before	Waypoint After	DME List
BNICE	MERKS	LBV, PHK, RSW

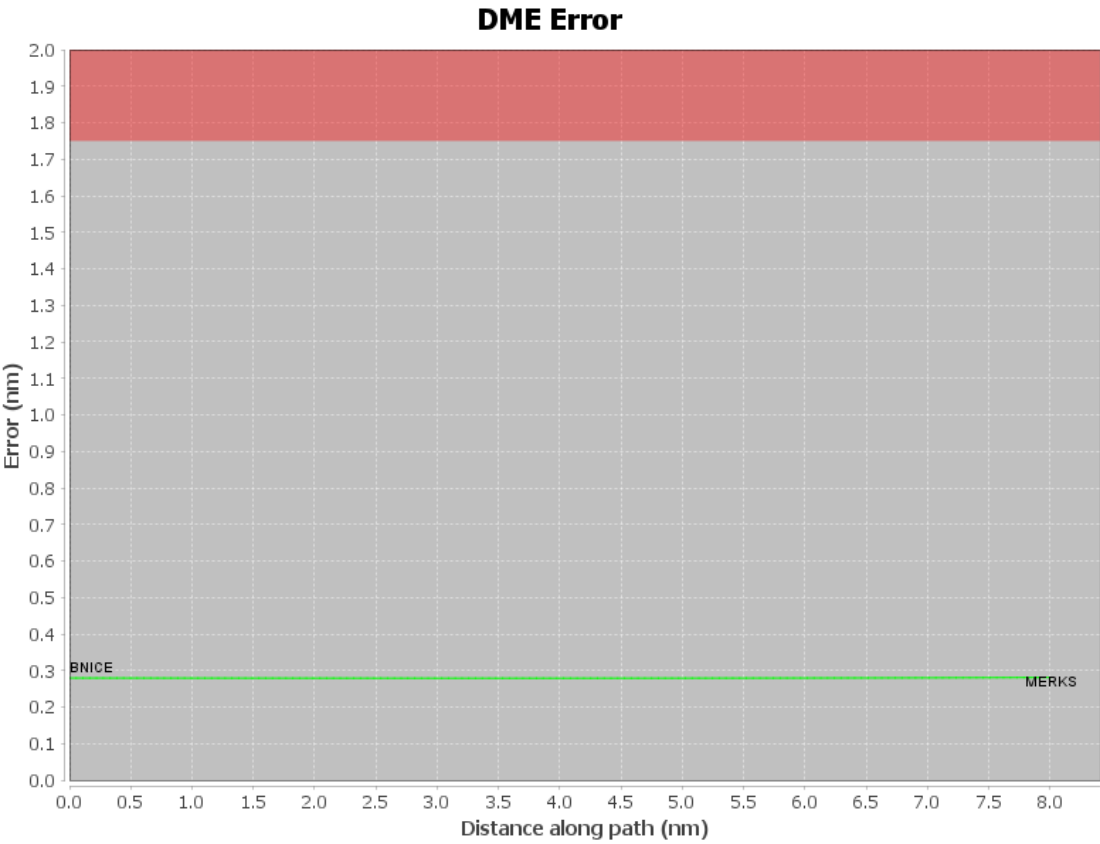
# DME DME Assessment Results for BNICE1 path BNICE\_MERKS

## User Data Files

#	File Name
1	UserDMEsKFLL [IFPA] BNICE1 SID_20211210_0903 EST.udt

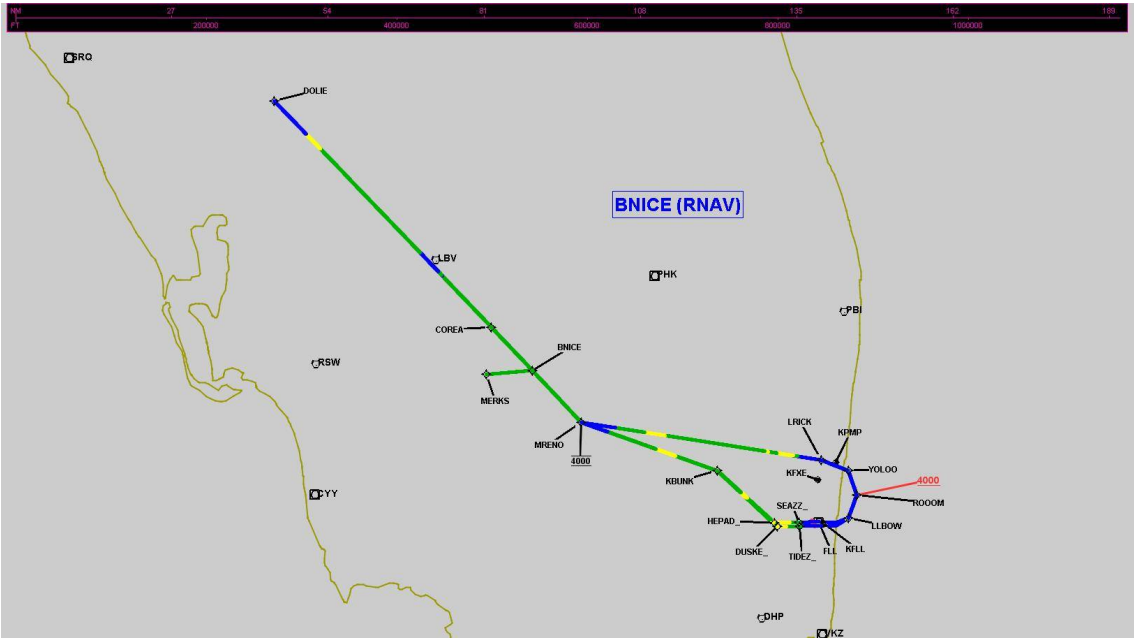
## User DMEs

#	Name	Lat/Lon	MAGVAR	Range	Elevation [ft]	Frequency	Replaces	Status
1	CYY FAA 815803-026 CYY [IFPA]	N26° 09' 12.339", W081° 46' 41.172"	3.0 W	25	8.7	108.6	CYY FAA 815803-026	
ESV:		Bearing [True]: 347.0° to 17.0° Bearing [Mag]: 350.0° to 20.0°				Arc Distance: Out to 65.0 NM Altitude: 3500.0 to 10000.0 ft		
2	SRQ FAA 070100-053 SRQ [IFPA]	N27° 24' 25.256", W082° 33' 49.185"	5.0 W	130	19	117.0	SRQ FAA 070100-053	
ESV:		Bearing [True]: 95.0° to 115.0° Bearing [Mag]: 100.0° to 120.0°				Arc Distance: Out to 60.0 NM Altitude: 3000.0 to 10000.0 ft		



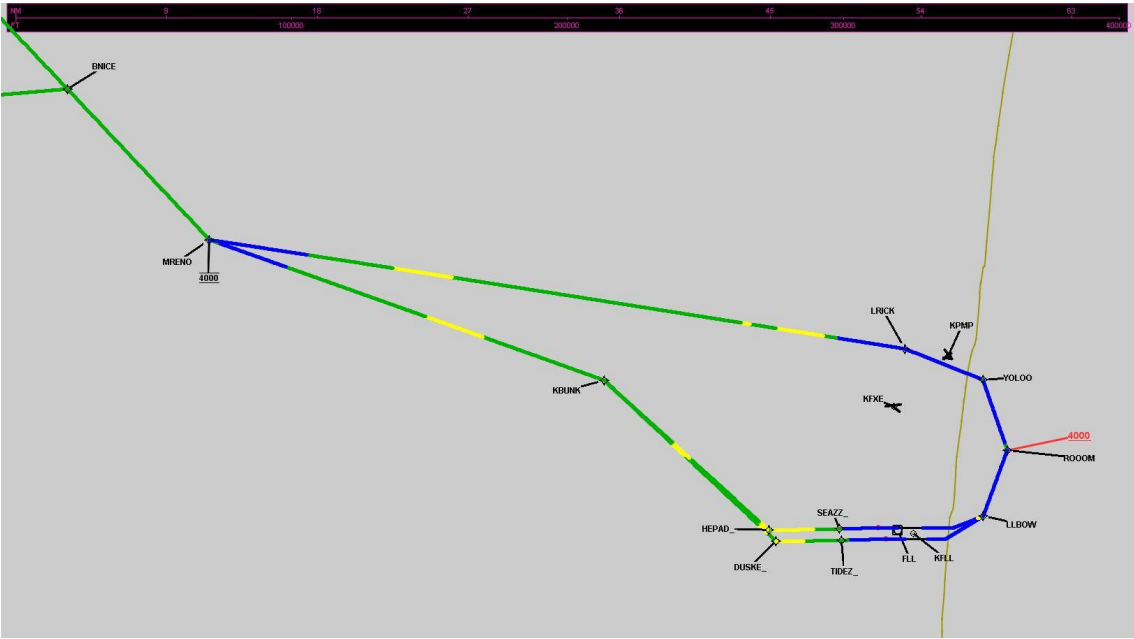
DME DME Assessment Results for BNICE1 path BNICE\_MERKS

Graphic Depiction 1



DME DME Assessment Results for BNICE1 path BNICE\_MERKS

Graphic Depiction 2



DME DME Assessment Results for BNICE1 path BNICE\_MERKS

Graphic Depiction 3

