

DME DME Assessment Results for AARPS1 path KFL:RW10L:DER_ONEWY

Results Summary

Flyability:	Completed
DME/DME:	Completed - No Critical DMEs
Name:	Miles CTR Carpenter
Project File:	C:\Users\Miles CTR Carpenter\Desktop\KFL:RW10L:DER_ONEWY\KFL:RW10L:DER_ONEWY SID DME_03.18.2021.tgs
Output File:	C:\Users\Miles CTR Carpenter\Desktop\KFL:RW10L:DER_ONEWY\KFL:RW10L:DER_ONEWY SID DME_03.18.2021.tgs
Procedure Name:	AARPS1
Software: DmeDmePlugin:	6.2.0
Date/Time:	03/18/2021 11:32 EDT
Databases:	DTED 0max

Failures

No Failures

Warnings

No Warnings

Notes For Flight Check

None

Flight Plan

Name	Type	Lat/Lon	Altitude (ft)	VNAV Mode	Ground Speed (kts)	Turn Type	Leg Type
KFL:RW10L:DER	WP	N26° 04' 36.451", W080° 08' 20.835"	5.5	VNAV	130	FLY_BY	TF
LLBOW	WP	N26° 05' 27.565", W080° 02' 36.374"	1000	VNAV	200	FLY_BY	TF
ROOOM	WP	N26° 09' 14.710", W080° 02' 44.550"	1800	VNAV	200	FLY_BY	TF
YOLOO	WP	N26° 13' 25.670", W080° 04' 21.650"	2500	VNAV	200	FLY_BY	TF
AGERS	WP	N26° 22' 53.320", W080° 16' 43.060"	5000	VNAV	200	FLY_BY	TF
PERTS	WP	N26° 33' 30.992", W080° 19' 05.938"	6000	VNAV	200	FLY_BY	TF
AARPS	WP	N26° 39' 58.322", W080° 20' 39.945"	8500	VNAV	200	FLY_BY	TF
MMART	WP	N26° 55' 19.780", W080° 25' 03.060"	10000	VNAV	200	FLY_BY	TF
ENWOD	WP	N27° 05' 03.400", W080° 28' 41.370"	12000	VNAV	240	FLY_BY	TF
SEAZY	WP	N27° 21' 47.320", W080° 36' 36.040"	15000	VNAV	240	FLY_BY	TF
ONEWY	WP	N28° 21' 53.660", W081° 03' 21.040"	18000	VNAV	240	FLY_BY	TF

Climb Gradient:
500.0 ft/NM up to 580.0 ft MSL
200.0 ft/NM

DME DME Assessment Results for AARPS1 path KFL:RW10L:DER_ONEWY

Flyability	
Flight Type:	SID
Selected Airport:	KFL (IFPA)
Climb Gradient:	500.0 ft/NM up to 580.0 ft MSL 200.0 ft/NM
Speeds:	130 at the Runway DER
	145 at the end of the VA or VI leg
	200 Ground Speed to 11000 FT
	240 Ground Speed to 18000 FT
	260 Ground Speed to 24000 FT
	340 Ground Speed above 24000 FT
Descent During a Turn:	Allowed
VNAV Mode:	Flight Plan

DME/DME	
RNP:	RNP 2
Flight Mode:	Manual
Line of Sight (DTED Level 0 Max):	Evaluated
Inertial Drift:	Enabled
Initial Drift:	0.558 NM
INS Drift Rate:	8.0 NM/Hour
Range Mode:	OSV
RNP Edges:	Evaluated
Min DME Range:	3.0 NM
DME Types:	DME, VOR-DME, VORTAC
DME Include Angles:	30 to 150
Critical DMEs:	Not Allowed
DoD Facilities:	Not included
Foreign Facilities:	Included
High DMEs:	Included
Low DMEs:	Included
Terminal DMEs:	Included
Flight Check DMEs:	Not selected
Higher Altitudes:	Not Evaluated
Near Maximum Altitude:	Not Evaluated
Automatic ESVs:	Not enabled
Disabled DMEs:	ZFP,ZQA,ZTC

DME DME Assessment Results for AARPS1 path KFL:RW10L:DER_ONEWY

DME/DME (Continued)										
DMEs Used										
#	Name	Lat/Lon	MAGVAR	Range	Type	Source	Critical	Status	Time	Distance
1	LAL	N27° 59' 10.310", W082° 00' 50.056"	1.0 E	130	H	IFPA	NO	Enabled	44.7 %	49.4 %
2	PHK	N26° 46' 57.873", W080° 41' 29.157"	0.0 E	130	H	IFPA	NO	Enabled	78.7 %	81.5 %
3	TRV	N27° 40' 42.326", W080° 29' 23.012"	7.0 W	130	H	IFPA	NO	Enabled	51 %	56 %
4	OMN	N29° 18' 11.707", W081° 06' 45.706"	0.0 E	130	H	IFPA	NO	Enabled	25.9 %	28.6 %
5	PIE	N27° 54' 27.952", W082° 41' 03.513"	5.0 W	130	H	IFPA	NO	Enabled	15.7 %	17.3 %
6	VKZ	N25° 45' 06.846", W080° 09' 15.996"	4.0 W	130	H	IFPA	NO	Enabled	4 %	3.5 %
7	LBV	N26° 49' 41.466", W081° 23' 29.178"	1.0 E	40	L	IFPA	NO	Enabled	16.3 %	16.8 %
8	MLB	N28° 06' 19.120", W080° 38' 06.460"	7.0 W	40	L	IFPA	NO	Enabled	33.9 %	37.4 %
9	FLL	N26° 04' 26.183", W080° 09' 59.192"	6.0 W	130	H	IFPA	NO	Enabled	30.8 %	30.3 %
10	DHP	N25° 47' 59.866", W080° 20' 56.526"	4.0 W	130	H	IFPA	NO	Enabled	15.6 %	14.8 %
11	PBI	N26° 40' 48.198", W080° 05' 11.359"	3.0 W	130	H	IFPA	NO	Enabled	69.7 %	70.5 %
12	ORL	N28° 32' 33.802", W081° 20' 06.053"	0.0 E	130	H	IFPA	NO	Enabled	39.2 %	43.3 %
13	ZFP	N26° 33' 19.250", W078° 41' 52.250"	3.0 W	130	H	IFPA	NO	Disabled		
14	ZQA	N25° 01' 31.860", W077° 26' 47.140"	6.0 W	130	H	IFPA	NO	Disabled		
15	ZTC	N26° 44' 05.000", W077° 22' 45.000"	5.0 W	130	H	IFPA	NO	Disabled		

DME DME Assessment Results for AARPS1 path KFL:RW10L:DER_ONEWY

Flight Check DME Selection						
Distance [NM]	Selected DMEs					Alternate
0.0						
2.5	FLL	PBI	VKZ	DHP		
2.9	VKZ	FLL				
3.0	FLL	PBI	VKZ	DHP		
4.4	VKZ	FLL				
4.7	FLL	PBI	VKZ	DHP		
5.2	FLL	PBI	DHP			
5.4	DHP	PBI				
5.9	FLL	PBI	VKZ	DHP		
6.6	FLL	PBI	DHP			
7.2	FLL	PBI				
8.2						
9.2	FLL	PBI				
9.5						
21.4	PHK	DHP	PBI	VKZ		
21.6	PHK	DHP	PBI			
26.8	PHK	PBI	DHP	FLL		
28.1	PHK	PBI	DHP			
29.7	PHK	PBI	FLL	DHP		
33.2	PHK	PBI	FLL			
48.4						
55.6	PHK	PBI				
60.7	PHK	PBI	LBV			
67.1	PHK	PBI	TRV			
67.6	PHK	PBI	LBV			
68.4	PHK	PBI	LBV	TRV		
77.7	LBV	PBI	TRV	LAL	PHK	
78.6	LBV	TRV	LAL	PHK		
86.8	LBV	FLL	LAL	TRV	PHK	VKZ
87.4	TRV	PBI	PHK	ORL		
87.6	LAL	TRV	PHK	PBI	DHP	ORL
94.0	LAL	TRV	PBI	PHK	ORL	FLL
108.4	PHK	TRV	LAL	MLB	ORL	PBI
140.0	LAL	OMN	MLB	PHK	ORL	PIE

Inertial Drift Segments			
#	Start Location	End Location	Length [NM]
1	N26° 04' 36.437", W080° 08' 18.442"	N26° 04' 35.436", W080° 05' 31.076"	2.5091
2	N26° 08' 21.264", W080° 02' 42.625"	N26° 09' 14.710", W080° 02' 44.550"	0.8913
3	N26° 09' 36.670", W080° 02' 53.042"	N26° 18' 32.292", W080° 11' 01.706"	11.9075
4	N26° 42' 49.693", W080° 21' 28.786"	N26° 49' 46.781", W080° 23' 27.833"	7.1553

Available DMEs by Waypoints		
Waypoint Before	Waypoint After	DME List
KFL:RW10L:DER	LLBOW	VKZ, PBI, FLL, DHP
LLBOW	ROOOM	VKZ, PBI, FLL, DHP
ROOOM	YOLOO	PBI, FLL
YOLOO	AGERS	PHK, VKZ, PBI, FLL, DHP
AGERS	PERTS	PHK, PBI, FLL, DHP
PERTS	AARPS	PHK, PBI, FLL
AARPS	MMART	LBV, PHK, PBI, FLL
MMART	ENWOD	LBV, PHK, PBI, TRV
ENWOD	SEAZY	LBV, PHK, VKZ, PBI, LAL, FLL, ORL, TRV, DHP
SEAZY	ONEWY	OMN, PHK, MLB, LAL, PBI, FLL, ORL, TRV, DHP, PIE

DME DME Assessment Results for AARPS1 path KFLL:RW10L:DER_ONEWY

User Data Files

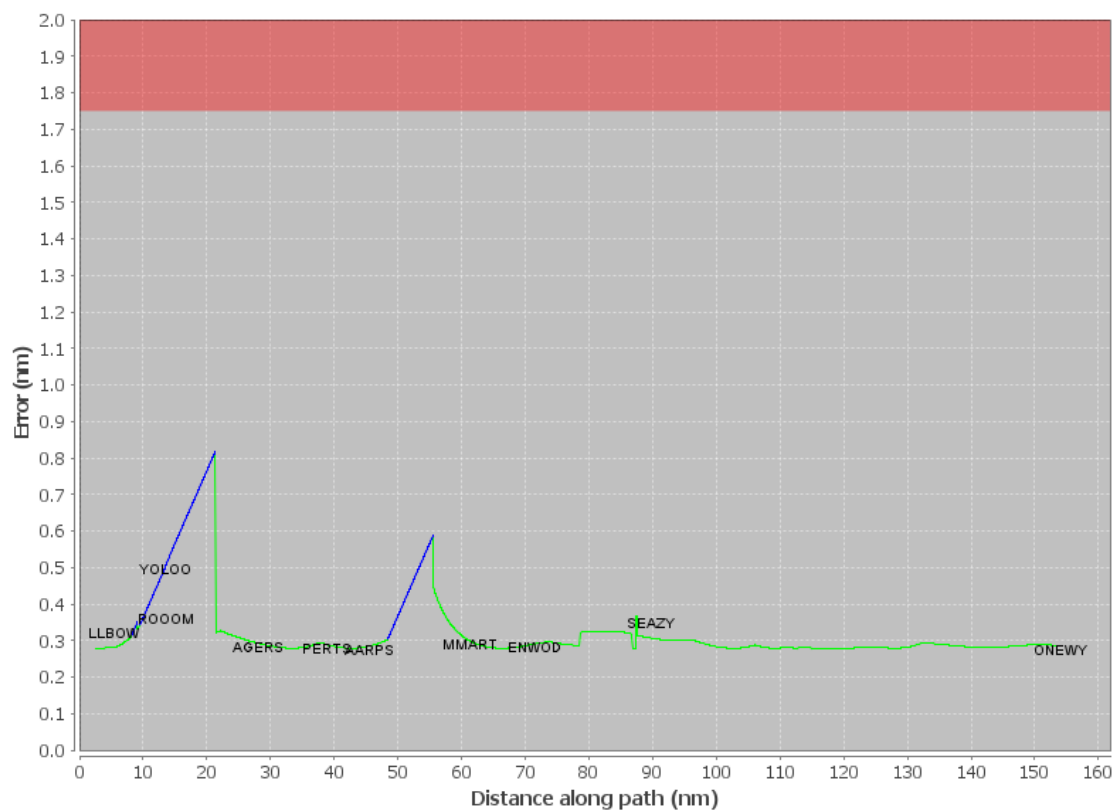
File Name

None

User DMEs

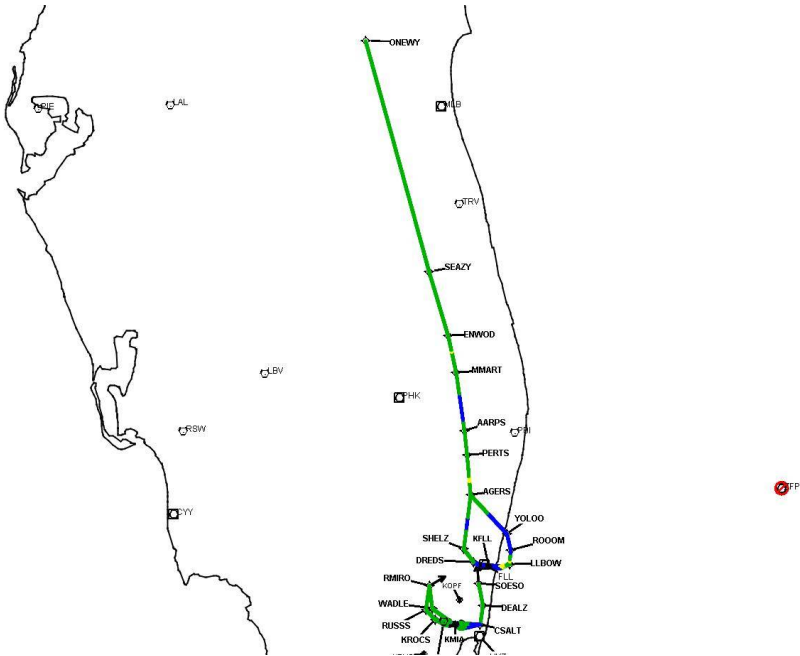
#	Name	Lat/Lon	MAGVAR	Range	Elevation [ft]	Frequency	Replaces	Status
1	LAL FAA 704224-40 LAL [IFPA]	N27° 59' 10.310", W082° 00' 50.056"	1.0 E	130	133.8	116.0	LAL FAA 704224-40	
ESV:		Bearing [True]: 43.0° to 123.0° Bearing [Mag]: 42.0° to 122.0°				Arc Distance: Out to 102.0 NM Altitude: 6000.0 to 18000.0 ft		
2	LBV FAA 755486-29 LBV [IFPA]	N26° 49' 41.466", W081° 23' 29.178"	1.0 E	40	30	110.4	LBV FAA 755486-29	
ESV:		Bearing [True]: 45.0° to 85.0° Bearing [Mag]: 44.0° to 84.0°				Arc Distance: Out to 85.0 NM Altitude: 6000.0 to 18000.0 ft		

DME Error



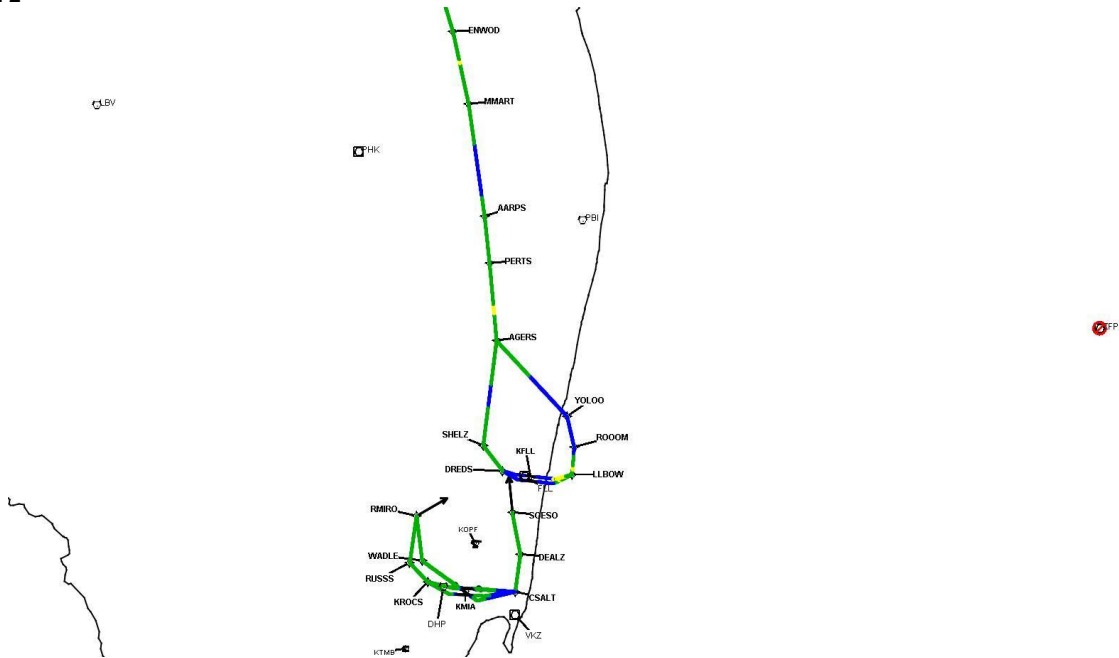
DME DME Assessment Results for AARPS1 path KFL:RW10L:DER_ONEWY

Graphic Depiction 1



DME DME Assessment Results for AARPS1 path KFL:RW10L:DER_ONEWY

Graphic Depiction 2



Graphic Depiction 3



DME DME Assessment Results for AARPS1 path KFL:RW10R:DER_LL

Results Summary

Flyability:	Completed
DME/DME:	Completed - No Critical DMEs
Name:	Miles CTR Carpenter
Project File:	C:\Users\Miles CTR Carpenter\Desktop\KFL: SIDs DME\KFL: AARPS SID DME\KFL: AARPS1 SID DME_03.18.2021.tgs
Output File:	C:\Users\Miles CTR Carpenter\Desktop\KFL: SIDs DME\KFL: AARPS SID DME\KFL: [IFPA] AARPS1 20210318_1132 EDT\KFL:RW10R-DER_LL\BOW\KFL: AARPS1 SID KFL: RW10R LLBOW 20210318_1132 EDT.pdf
Procedure Name:	AARPS1
Software: DmeDmePlugin:	6.2.0
Date/Time:	03/18/2021 11:32 EDT
Databases:	DTED 0max

Failures

No Failures

Warnings

No Warnings

Notes For Flight Check

None

Flight Plan

Name	Type	Lat/Lon	Altitude (ft)	VNAV Mode	Ground Speed (kts)	Turn Type	Leg Type
KFL:RW10R:DER	WP	N26° 03' 56.672", W080° 08' 02.339"	65	VNAV	130	FLY_BY	TF
LLBOW	WP	N26° 05' 27.565", W080° 02' 36.374"	1000	VNAV	200	FLY_BY	TF
Climb Gradient: 500.0 ft/NM up to 580.0 ft MSL 200.0 ft/NM							

Flyability

Flight Type:	SID
Selected Airport:	KFL [IFPA]
Climb Gradient:	500.0 ft/NM up to 580.0 ft MSL 200.0 ft/NM
Speeds:	130 at the Runway DER
	145 at the end of the VA or VI leg
	200 Ground Speed to 11000 FT
	240 Ground Speed to 18000 FT
	260 Ground Speed to 24000 FT
	340 Ground Speed above 24000 FT
Descent During a Turn:	Allowed
VNAV Mode:	Flight Plan

DME DME Assessment Results for AARPS1 path KLL:RW10R:DER_LL

DME/DME	
RNP:	RNP 2
Flight Mode:	Manual
Line of Sight (DTED Level 0 Max):	Evaluated
Inertial Drift:	Enabled
Initial Drift:	0.558 NM
INS Drift Rate:	8.0 NM/Hour
Range Mode:	OSV
RNP Edges:	Evaluated
Min DME Range:	3.0 NM
DME Types:	DME, VOR-DME, VORTAC
DME Include Angles:	30 to 150
Critical DMEs:	Not Allowed
DoD Facilities:	Not included
Foreign Facilities:	Included
High DMEs:	Included
Low DMEs:	Included
Terminal DMEs:	Included
Flight Check DMEs:	Not selected
Higher Altitudes:	Not Evaluated
Near Maximum Altitude:	Not Evaluated
Automatic ESVs:	Not enabled
Disabled DMEs:	ZFP,ZQA,ZTC

DME/DME (Continued)										
DMEs Used										
#	Name	Lat/Lon	MAGVAR	Range	Type	Source	Critical	Status	Time	Distance
1	VKZ	N25° 45' 06.846", W080° 09' 15.996"	4.0 W	130	H	IFPA	NO	Enabled	47.7 %	51.3 %
2	FLL	N26° 04' 26.183", W080° 09' 59.192"	6.0 W	130	H	IFPA	NO	Enabled	51.2 %	55.8 %
3	DHP	N25° 47' 59.866", W080° 20' 56.526"	4.0 W	130	H	IFPA	NO	Enabled	21.2 %	24.9 %
4	PBI	N26° 40' 48.198", W080° 05' 11.359"	3.0 W	130	H	IFPA	NO	Enabled	21.2 %	24.9 %
5	ZFP	N26° 33' 19.250", W078° 41' 52.250"	3.0 W	130	H	IFPA	NO	Disabled		
6	ZQA	N25° 01' 31.860", W077° 26' 47.140"	6.0 W	130	H	IFPA	NO	Disabled		
7	ZTC	N26° 44' 05.000", W077° 22' 45.000"	5.0 W	130	H	IFPA	NO	Disabled		

Flight Check DME Selection						
Distance [NM]	Selected DMEs					Alternate
0.0						
2.4	VKZ	FLL				
3.3	FLL	PBI	VKZ	DHP		
3.7	VKZ	FLL				
4.4	FLL	PBI	VKZ	DHP		
5.1	FLL	PBI	DHP			

Inertial Drift Segments			
#	Start Location	End Location	Length [NM]
1	N26° 03' 56.658", W080° 07' 59.972"	N26° 03' 55.707", W080° 05' 25.590"	2.3117

Available DMEs by Waypoints		
Waypoint Before	Waypoint After	DME List
KLL:RW10R:DER	LLBOW	VKZ, PBI, FLL, DHP

DME DME Assessment Results for AARPS1 path KFLL:RW10R:DER_LLBO

User Data Files

File Name

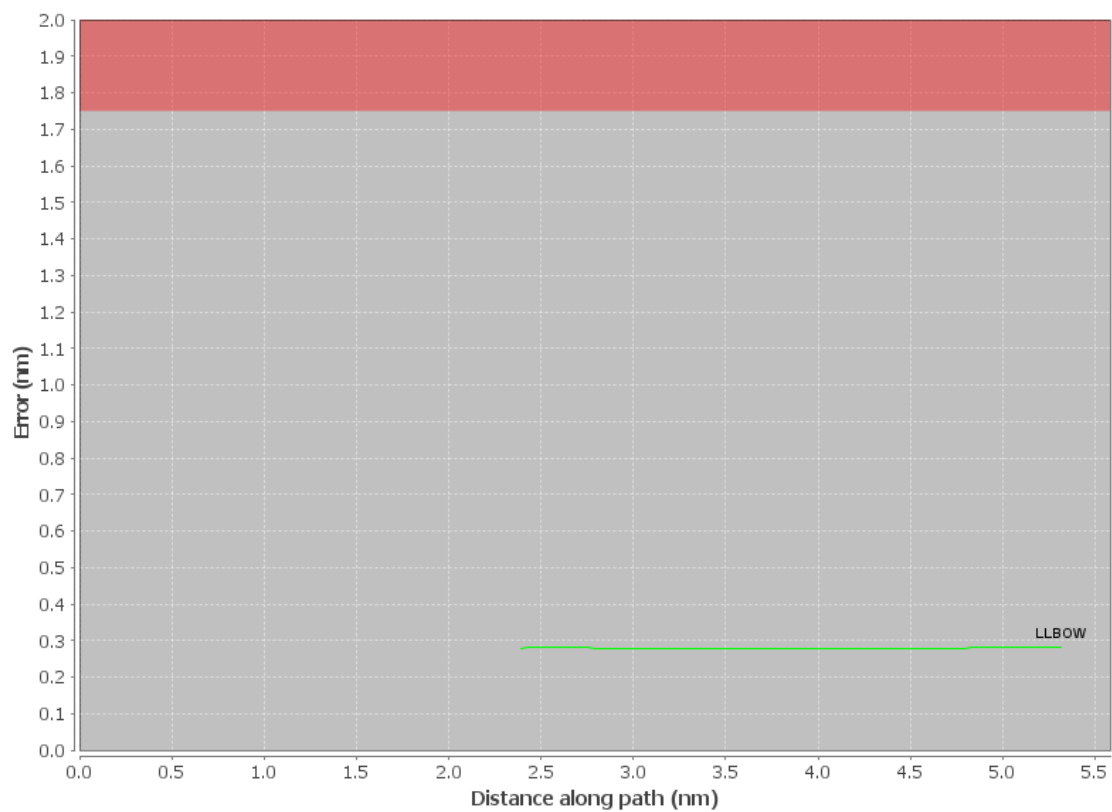
None

User DMEs

#	Name	Lat/Lon	MAGVAR	Range	Elevation [ft]	Frequency	Replaces	Status
1	LAL FAA 704224-40 LAL [IFPA]	N27° 59' 10.310", W082° 00' 50.056"	1.0 E	130	133.8	116.0	LAL FAA 704224-40	
ESV:		Bearing [True]: 43.0° to 123.0° Bearing [Mag]: 42.0° to 122.0°				Arc Distance: Out to 102.0 NM Altitude: 6000.0 to 18000.0 ft		
2	LBV FAA 755486-29 LBV [IFPA]	N26° 49' 41.466", W081° 23' 29.178"	1.0 E	40	30	110.4	LBV FAA 755486-29	
ESV:		Bearing [True]: 45.0° to 85.0° Bearing [Mag]: 44.0° to 84.0°				Arc Distance: Out to 85.0 NM Altitude: 6000.0 to 18000.0 ft		

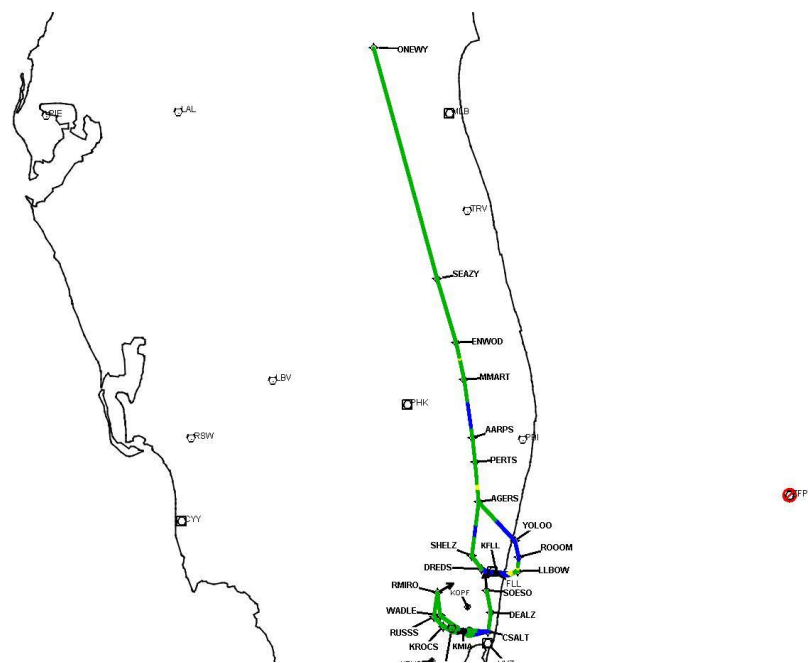
DME DME Assessment Results for AARPS1 path KFL:RW10R:DER_LLBO

DME Error



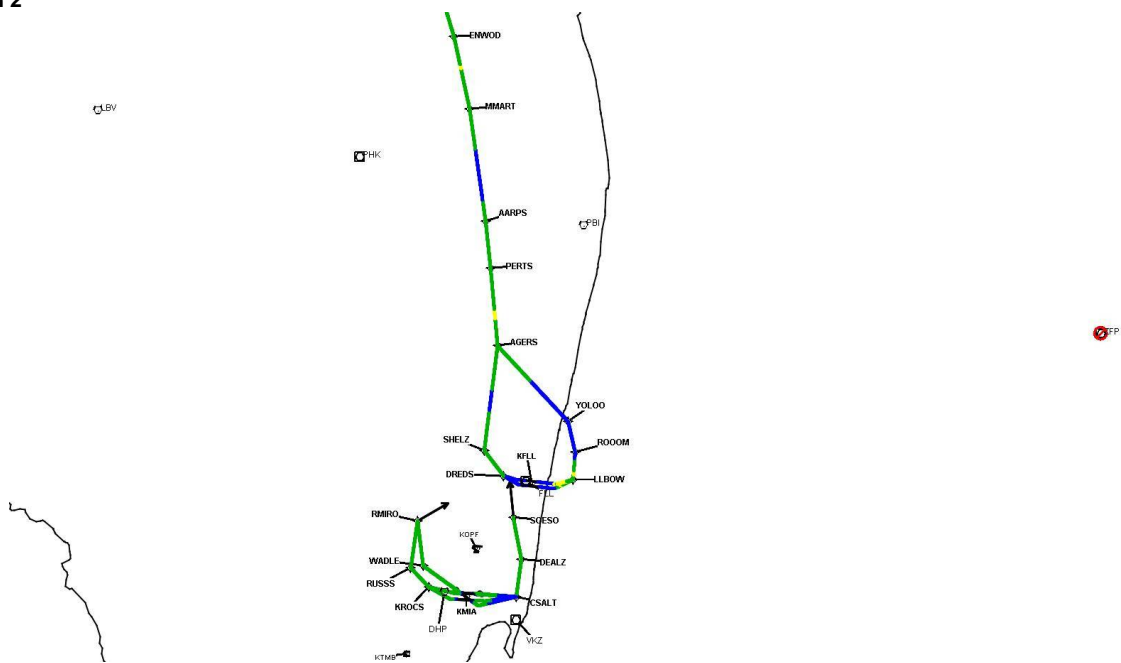
DME DME Assessment Results for AARPS1 path KFL:RW10R:DER_LLBO

Graphic Depiction 1



DME DME Assessment Results for AARPS1 path KFL:RW10R:DER_LLBO

Graphic Depiction 2



Graphic Depiction 3



DME DME Assessment Results for AARPS1 path KFL:RW28L:DER_AGERS

Results Summary

Flyability:	Completed
DME/DME:	Completed - No Critical DMEs
Name:	Miles CTR Carpenter
Project File:	C:\Users\Miles CTR Carpenter\Desktop\KFL: SIDs DME\KFL: AARPS SID DME\KFL: AARPS1 SID DME_03.18.2021.tgs
Output File:	C:\Users\Miles CTR Carpenter\Desktop\KFL: SIDs DME\KFL: AARPS SID DME\KFL: [IFPA] AARPS1 20210318_1132 EDT\KFL:RW28L-DER_AGERS\KFL: AARPS1 SID KFL: RW28L AGERS 20210318_1132 EDT.pdf
Procedure Name:	AARPS1
Software: DmeDmePlugin:	6.2.0
Date/Time:	03/18/2021 11:32 EDT
Databases:	DTED 0max

Failures

No Failures

Warnings

No Warnings

Notes For Flight Check

None

Flight Plan

Name	Type	Lat/Lon	Altitude (ft)	VNAV Mode	Ground Speed (kts)	Turn Type	Leg Type
KFL:RW28L:DER	WP	N26° 03' 57.192", W080° 09' 30.056"	10.1	VNAV	130	FLY_BY	TF
DREDS	WP	N26° 04' 56.670", W080° 13' 34.420"	1000	VNAV	200	FLY_BY	TF
SHELZ	WP	N26° 08' 10.810", W080° 17' 05.350"	2000	VNAV	200	FLY_BY	TF
AGERS	WP	N26° 22' 53.320", W080° 16' 43.060"	5000	VNAV	200	FLY_BY	TF
Climb Gradient: 500.0 ft/NM up to 580.0 ft MSL 200.0 ft/NM							

Flyability

Flight Type:	SID
Selected Airport:	KFL [IFPA]
Climb Gradient:	500.0 ft/NM up to 580.0 ft MSL 200.0 ft/NM
Speeds:	130 at the Runway DER
	145 at the end of the VA or VI leg
	200 Ground Speed to 11000 FT
	240 Ground Speed to 18000 FT
	260 Ground Speed to 24000 FT
	340 Ground Speed above 24000 FT
Descent During a Turn:	Allowed
VNAV Mode:	Flight Plan

DME DME Assessment Results for AARPS1 path KLL:RW28L:DER_AGERS

DME/DME	
RNP:	RNP 2
Flight Mode:	Manual
Line of Sight (DTED Level 0 Max):	Evaluated
Inertial Drift:	Enabled
Initial Drift:	0.558 NM
INS Drift Rate:	8.0 NM/Hour
Range Mode:	OSV
RNP Edges:	Evaluated
Min DME Range:	3.0 NM
DME Types:	DME, VOR-DME, VORTAC
DME Include Angles:	30 to 150
Critical DMEs:	Not Allowed
DoD Facilities:	Not included
Foreign Facilities:	Included
High DMEs:	Included
Low DMEs:	Included
Terminal DMEs:	Included
Flight Check DMEs:	Not selected
Higher Altitudes:	Not Evaluated
Near Maximum Altitude:	Not Evaluated
Automatic ESVs:	Not enabled
Disabled DMEs:	ZFP,ZQA,ZTC

DME/DME (Continued)										
DMEs Used										
#	Name	Lat/Lon	MAGVAR	Range	Type	Source	Critical	Status	Time	Distance
1	PHK	N26° 46' 57.873", W080° 41' 29.157"	0.0 E	130	H	IFPA	NO	Enabled	25.4 %	26.7 %
2	FLL	N26° 04' 26.183", W080° 09' 59.192"	6.0 W	130	H	IFPA	NO	Enabled	42.9 %	44.9 %
3	DHP	N25° 47' 59.866", W080° 20' 56.526"	4.0 W	130	H	IFPA	NO	Enabled	68.3 %	71.6 %
4	PBI	N26° 40' 48.198", W080° 05' 11.359"	3.0 W	130	H	IFPA	NO	Enabled	52 %	54.5 %
5	ZFP	N26° 33' 19.250", W078° 41' 52.250"	3.0 W	130	H	IFPA	NO	Disabled		
6	ZQA	N25° 01' 31.860", W077° 26' 47.140"	6.0 W	130	H	IFPA	NO	Disabled		
7	ZTC	N26° 44' 05.000", W077° 22' 45.000"	5.0 W	130	H	IFPA	NO	Disabled		

Flight Check DME Selection						
Distance [NM]	Selected DMEs					Alternate
0.0						
3.6	FLL	DHP				
5.7	FLL	DHP	PBI			
12.2	FLL	DHP				
14.0						
16.9	PHK	PBI	DHP			

Inertial Drift Segments			
#	Start Location	End Location	Length [NM]
1	N26° 03' 57.206", W080° 09' 32.429"	N26° 04' 50.876", W080° 13' 19.769"	3.5935
2	N26° 13' 50.497", W080° 16' 56.782"	N26° 16' 43.669", W080° 16' 52.408"	2.8784

DME DME Assessment Results for AARPS1 path KFL:RW28L:DER_AGERS

Available DMEs by Waypoints

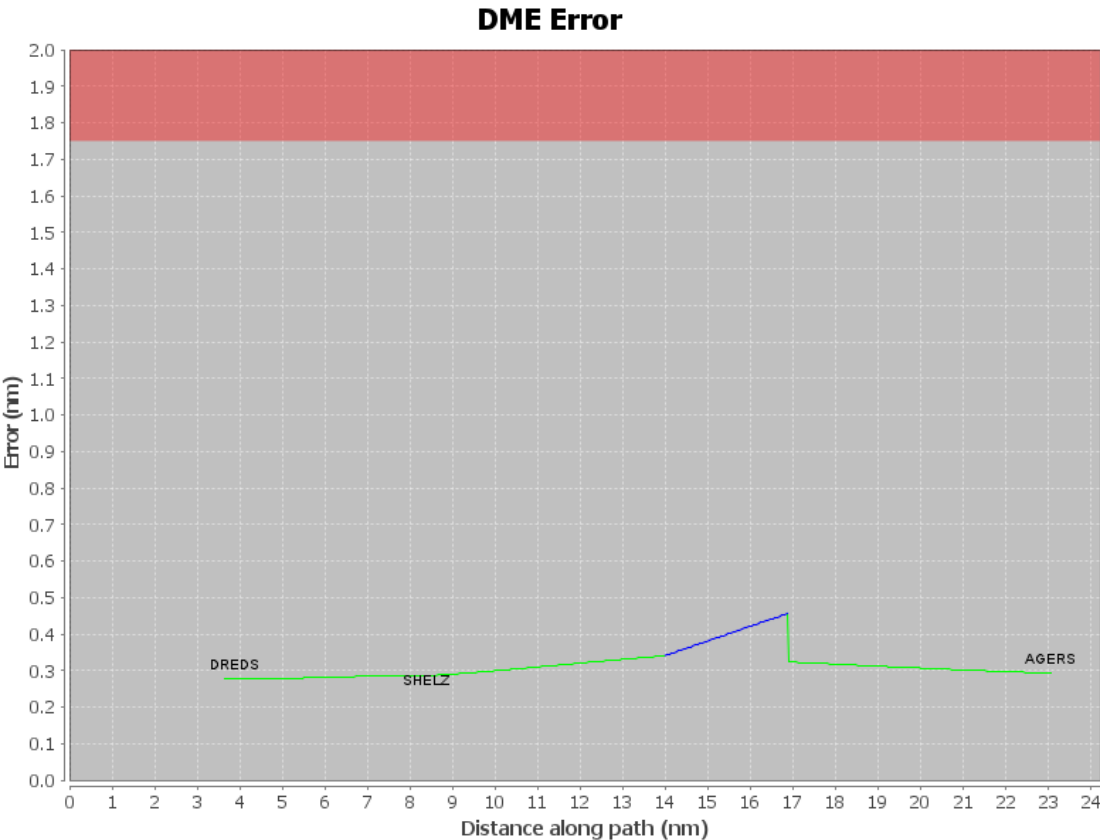
Waypoint Before	Waypoint After	DME List
KFL:RW28L:DER	DREDS	FLL, DHP
DREDS	SHELZ	PBI, FLL, DHP
SHELZ	AGERS	PHK, PBI, FLL, DHP

User Data Files

#	File Name
None	

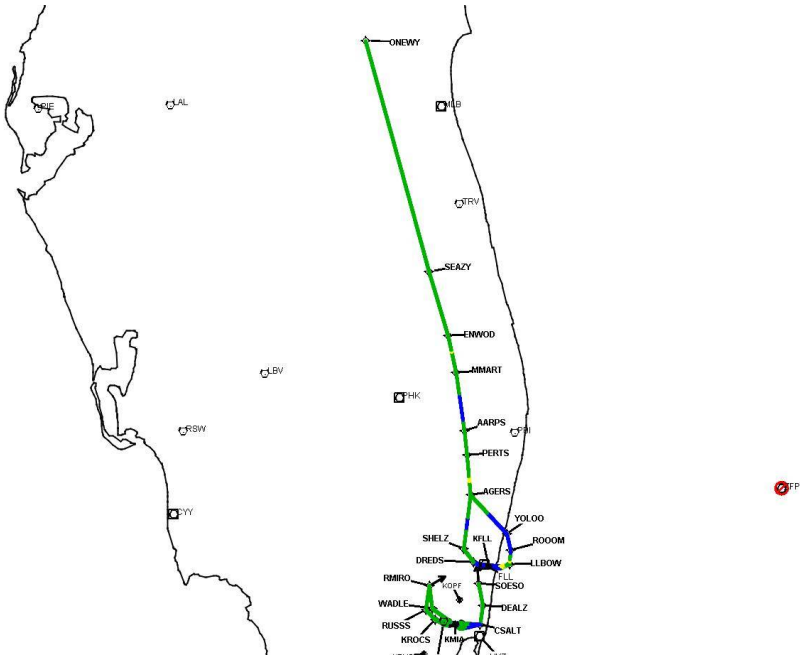
User DMEs

#	Name	Lat/Lon	MAGVAR	Range	Elevation [ft]	Frequency	Replaces	Status
1	LAL FAA 704224-40 LAL [IFPA]	N27° 59' 10.310" W082° 00' 50.056"	1.0 E	130	133.8	116.0	LAL FAA 704224-40	
ESV:		Bearing [True]: 43.0° to 123.0° Bearing [Mag]: 42.0° to 122.0°				Arc Distance: Out to 102.0 NM Altitude: 6000.0 to 18000.0 ft		
2	LBV FAA 755486-29 LBV [IFPA]	N26° 49' 41.466" W081° 23' 29.178"	1.0 E	40	30	110.4	LBV FAA 755486-29	
ESV:		Bearing [True]: 45.0° to 85.0° Bearing [Mag]: 44.0° to 84.0°				Arc Distance: Out to 85.0 NM Altitude: 6000.0 to 18000.0 ft		



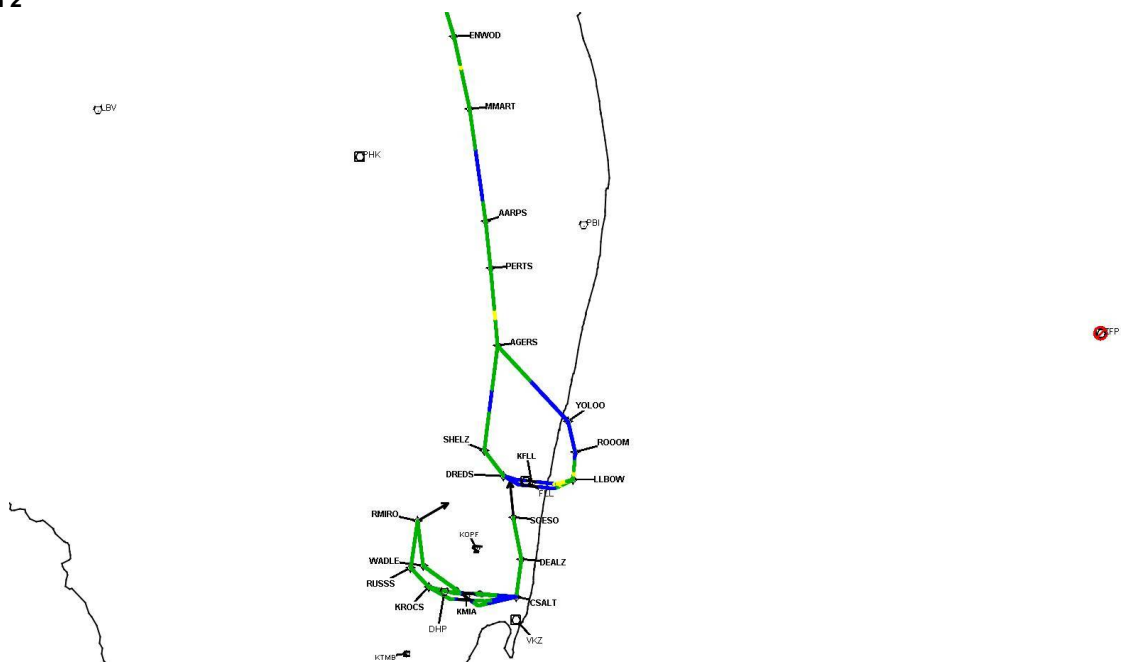
DME DME Assessment Results for AARPS1 path KFL:RW28L:DER_AGERS

Graphic Depiction 1



DME DME Assessment Results for AARPS1 path KFL:RW28L:DER_AGERS

Graphic Depiction 2



Graphic Depiction 3



DME DME Assessment Results for AARPS1 path KFL:RW28R:DER_DREDS

Results Summary

Flyability:	Completed
DME/DME:	Completed - No Critical DMEs
Name:	Miles CTR Carpenter
Project File:	C:\Users\Miles CTR Carpenter\Desktop\KFL SIDs DME\KFL AARPS SID DME\KFL AARPS1 SID DME_03.18.2021.tgs
Output File:	C:\Users\Miles CTR Carpenter\Desktop\KFL SIDs DME\KFL AARPS SID DME\KFL [IFPA] AARPS1 20210318_1132 EDT\KFL-RW28R-DER_DREDS\KFL AARPS1 SID KFL RW28R DREDS 20210318_1132 EDT.pdf
Procedure Name:	AARPS1
Software: DmeDmePlugin:	6.2.0
Date/Time:	03/18/2021 11:32 EDT
Databases:	DTED 0max

Failures

No Failures

Warnings

No Warnings

Notes For Flight Check

None

Flight Plan

Name	Type	Lat/Lon	Altitude (ft)	VNAV Mode	Ground Speed (kts)	Turn Type	Leg Type
KFL:RW28R:DER	WP	N26° 04' 37.017", W080° 09' 59.538"	6	VNAV	130	FLY_BY	TF
DREDS	WP	N26° 04' 56.670", W080° 13' 34.420"	1000	VNAV	200	FLY_BY	TF
Climb Gradient: 500.0 ft/NM up to 580.0 ft MSL 200.0 ft/NM							

Flyability

Flight Type:	SID
Selected Airport:	KFL [IFPA]
Climb Gradient:	500.0 ft/NM up to 580.0 ft MSL 200.0 ft/NM
Speeds:	130 at the Runway DER
	145 at the end of the VA or VI leg
	200 Ground Speed to 11000 FT
	240 Ground Speed to 18000 FT
	260 Ground Speed to 24000 FT
	340 Ground Speed above 24000 FT
Descent During a Turn:	Allowed
VNAV Mode:	Flight Plan

DME DME Assessment Results for AARPS1 path KFL:RW28R:DER_DREDS

DME/DME	
RNP:	RNP 2
Flight Mode:	Manual
Line of Sight (DTED Level 0 Max):	Evaluated
Inertial Drift:	Enabled
Initial Drift:	0.558 NM
INS Drift Rate:	8.0 NM/Hour
Range Mode:	OSV
RNP Edges:	Evaluated
Min DME Range:	3.0 NM
DME Types:	DME, VOR-DME, VORTAC
DME Include Angles:	30 to 150
Critical DMEs:	Not Allowed
DoD Facilities:	Not included
Foreign Facilities:	Included
High DMEs:	Included
Low DMEs:	Included
Terminal DMEs:	Included
Flight Check DMEs:	Not selected
Higher Altitudes:	Not Evaluated
Near Maximum Altitude:	Not Evaluated
Automatic ESVs:	Not enabled
Disabled DMEs:	ZFP,ZQA,ZTC

DME/DME (Continued)										
DMEs Used										
#	Name	Lat/Lon	MAGVAR	Range	Type	Source	Critical	Status	Time	Distance
1	ZFP	N26° 33' 19.250", W078° 41' 52.250"	3.0 W	130	H	IFPA	NO	Disabled		
2	ZQA	N25° 01' 31.860", W077° 26' 47.140"	6.0 W	130	H	IFPA	NO	Disabled		
3	ZTC	N26° 44' 05.000", W077° 22' 45.000"	5.0 W	130	H	IFPA	NO	Disabled		

Flight Check DME Selection						
Distance [NM]	Selected DMEs					Alternate
0.0						

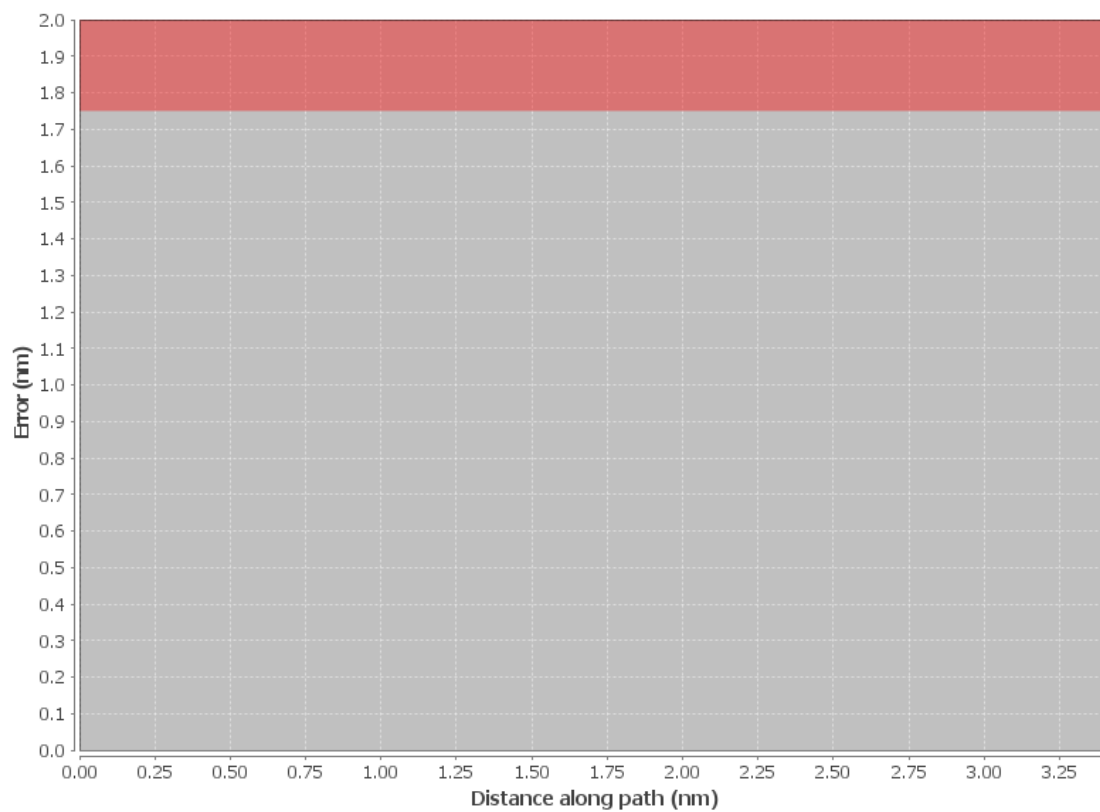
Inertial Drift Segments			
#	Start Location	End Location	Length [NM]
1	N26° 04' 37.030", W080° 10' 01.929"	N26° 04' 56.670", W080° 13' 34.420"	3.2146

Available DMEs by Waypoints		
Waypoint Before	Waypoint After	DME List
KFL:RW28R:DER	DREDS	

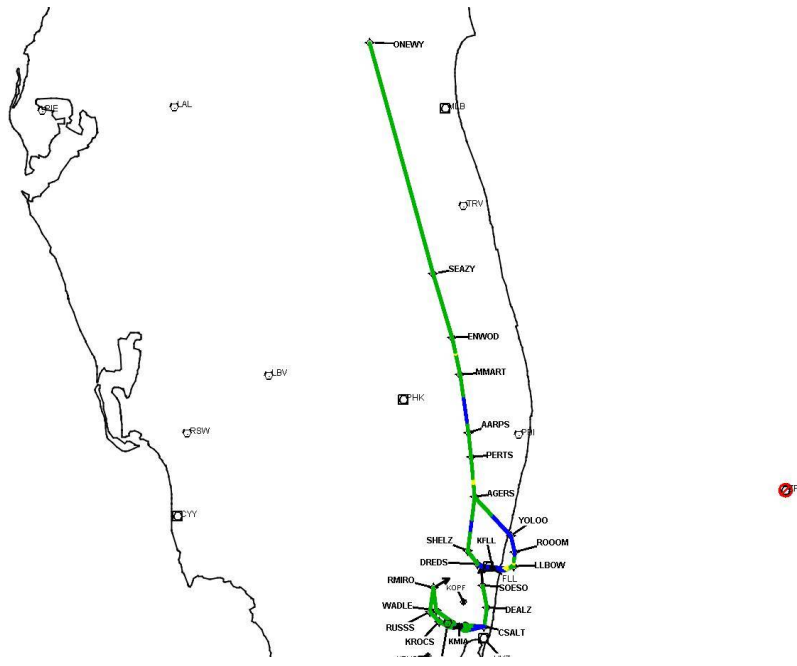
User Data Files								
#	File Name							
None								
User DMEs								
#	Name	Lat/Lon	MAGVAR	Range	Elevation [ft]	Frequency	Replaces	Status
1	LAL FAA 704224-40 LAL [IFPA]	N27° 59' 10.310", W082° 00' 50.056"	1.0 E	130	133.8	116.0	LAL FAA 704224-40	
ESV:		Bearing [True]: 43.0° to 123.0° Bearing [Mag]: 42.0° to 122.0°				Arc Distance: Out to 102.0 NM Altitude: 6000.0 to 18000.0 ft		
2	LBV FAA 755486-29 LBV [IFPA]	N26° 49' 41.466", W081° 23' 29.178"	1.0 E	40	30	110.4	LBV FAA 755486-29	
ESV:		Bearing [True]: 45.0° to 85.0° Bearing [Mag]: 44.0° to 84.0°				Arc Distance: Out to 85.0 NM Altitude: 6000.0 to 18000.0 ft		

DME DME Assessment Results for AARPS1 path KFL:RW28R:DER_DREDS

DME Error

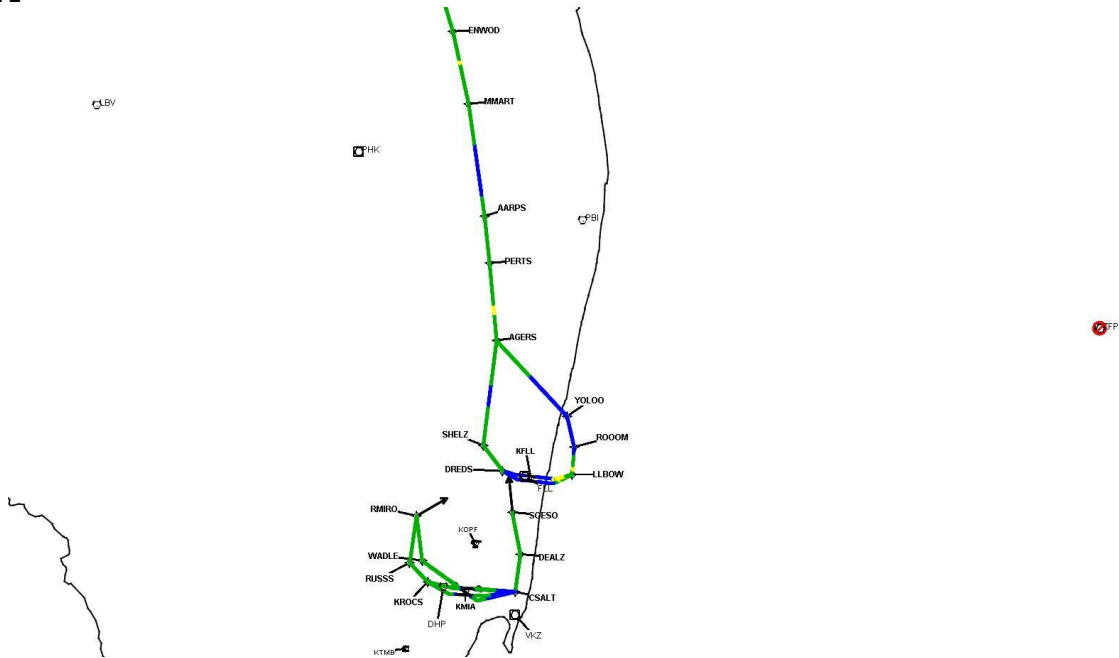


Graphic Depiction 1



DME DME Assessment Results for AARPS1 path KFL:RW28R:DER_DREDS

Graphic Depiction 2



Graphic Depiction 3



DME DME Assessment Results for AARPS1 path KMIA:RW08L:DER_CSALT

Results Summary

Flyability:	Completed
DME/DME:	Completed - No Critical DMEs
Name:	Miles CTR Carpenter
Project File:	C:\Users\Miles CTR Carpenter\Desktop\KFLI SIDs DME\KFLI AARPS SID DME\KFLI AARPS1 SID DME_03.18.2021.tgs
Output File:	C:\Users\Miles CTR Carpenter\Desktop\KFLI SIDs DME\KFLI AARPS SID DME\KFLI [IFPA] AARPS1 20210318_1132 EDT\KMIA-RW08L-DER_CSALT\KFLI AARPS1 SID KMIA RW08L CSALT 20210318_1132 EDT.pdf
Procedure Name:	AARPS1
Software: DmeDmePlugin:	6.2.0
Date/Time:	03/18/2021 11:32 EDT
Databases:	DTED 0max

Failures

No Failures

Warnings

No Warnings

Notes For Flight Check

None

Flight Plan

Name	Type	Lat/Lon	Altitude (ft)	VNAV Mode	Ground Speed (kts)	Turn Type	Leg Type
KMIA:RW08L:DER	WP	N25° 48' 14.320", W080° 16' 31.550"	8.8	VNAV	130	FLY_OVER	TF
CSALT	WP	N25° 48' 23.360", W080° 09' 38.320"	1500	VNAV	200	FLY_BY	TF
Climb Gradient: 500.0 ft/NM up to 520.0 ft MSL 200.0 ft/NM							

Flyability

Flight Type:	SID
Selected Airport:	KFLI [IFPA]
Climb Gradient:	500.0 ft/NM up to 520.0 ft MSL 200.0 ft/NM
Speeds:	130 at the Runway DER
	145 at the end of the VA or VI leg
	200 Ground Speed to 11000 FT
	240 Ground Speed to 18000 FT
	260 Ground Speed to 24000 FT
	340 Ground Speed above 24000 FT
Descent During a Turn:	Allowed
VNAV Mode:	Flight Plan

DME DME Assessment Results for AARPS1 path KMIA:RW08L:DER_CSALT

DME/DME	
RNP:	RNP 2
Flight Mode:	Manual
Line of Sight (DTED Level 0 Max):	Evaluated
Inertial Drift:	Enabled
Initial Drift:	0.558 NM
INS Drift Rate:	8.0 NM/Hour
Range Mode:	OSV
RNP Edges:	Evaluated
Min DME Range:	3.0 NM
DME Types:	DME, VOR-DME, VORTAC
DME Include Angles:	30 to 150
Critical DMEs:	Not Allowed
DoD Facilities:	Not included
Foreign Facilities:	Included
High DMEs:	Included
Low DMEs:	Included
Terminal DMEs:	Included
Flight Check DMEs:	Not selected
Higher Altitudes:	Not Evaluated
Near Maximum Altitude:	Not Evaluated
Automatic ESVs:	Not enabled
Disabled DMEs:	ZFP,ZQA,ZTC

DME/DME (Continued)										
DMEs Used										
#	Name	Lat/Lon	MAGVAR	Range	Type	Source	Critical	Status	Time	Distance
1	VKZ	N25° 45' 06.846", W080° 09' 15.996"	4.0 W	130	H	IFPA	NO	Enabled	56.5 %	52.7 %
2	FLL	N26° 04' 26.183", W080° 09' 59.192"	6.0 W	130	H	IFPA	NO	Enabled	55.8 %	52.4 %
3	DHP	N25° 47' 59.866", W080° 20' 56.526"	4.0 W	130	H	IFPA	NO	Enabled	58.5 %	54.7 %
4	ZFP	N26° 33' 19.250", W078° 41' 52.250"	3.0 W	130	H	IFPA	NO	Disabled		
5	ZQA	N25° 01' 31.860", W077° 26' 47.140"	6.0 W	130	H	IFPA	NO	Disabled		
6	ZTC	N26° 44' 05.000", W077° 22' 45.000"	5.0 W	130	H	IFPA	NO	Disabled		

Flight Check DME Selection						
Distance [NM]	Selected DMEs					Alternate
0.0						
0.3	VKZ	DHP				
0.4	VKZ	FLL	DHP			
3.6	FLL	DHP				
3.7						

Inertial Drift Segments			
#	Start Location	End Location	Length [NM]
1	N25° 48' 14.417", W080° 16' 29.208"	N25° 48' 15.093", W080° 16' 12.818"	0.2468
2	N25° 48' 20.388", W080° 12' 24.293"	N25° 48' 23.360", W080° 09' 38.320"	2.4969

Available DMEs by Waypoints		
Waypoint Before	Waypoint After	DME List
KMIA:RW08L:DER	CSALT	VKZ, FLL, DHP

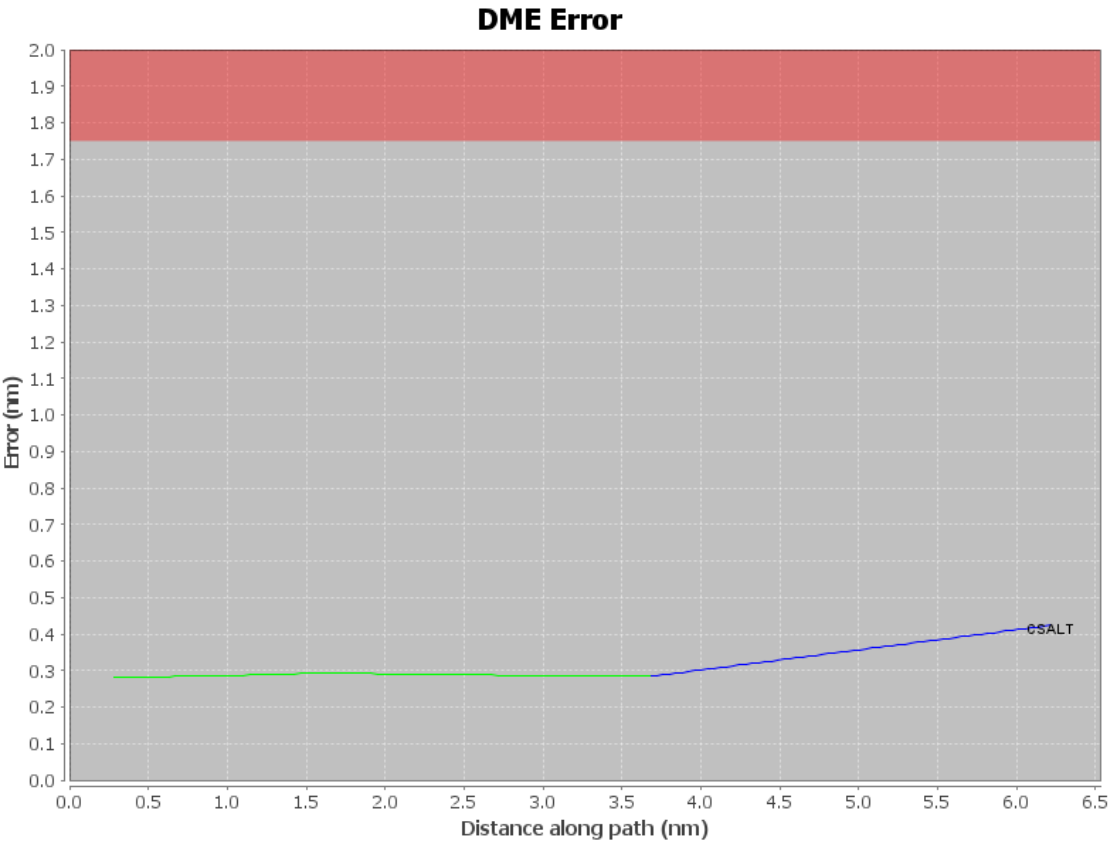
DME DME Assessment Results for AARPS1 path KMIA:RW08L:DER_CSALT

User Data Files

#	File Name
	None

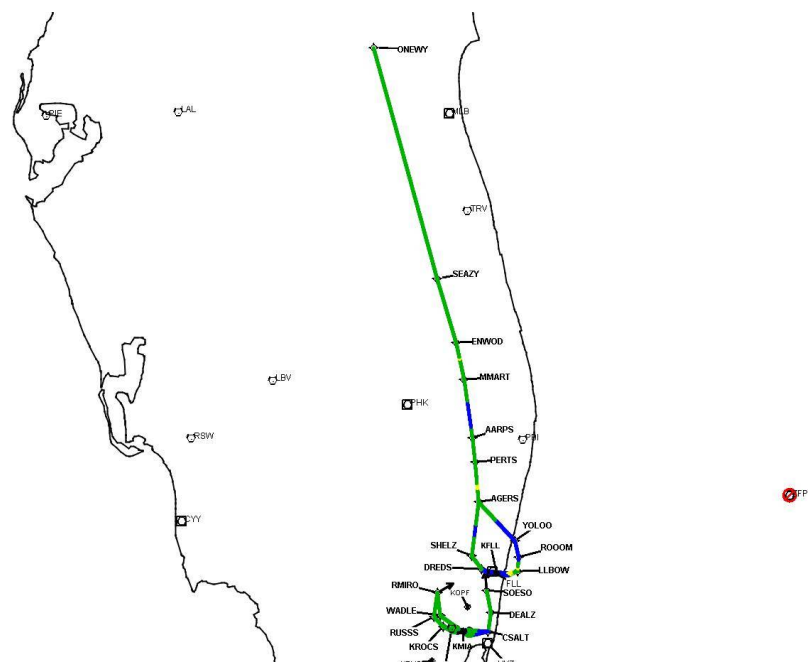
User DMEs

#	Name	Lat/Lon	MAGVAR	Range	Elevation [ft]	Frequency	Replaces	Status
1	LAL FAA 704224-40 LAL [IFPA]	N27° 59' 10.310", W082° 00' 50.056"	1.0 E	130	133.8	116.0	LAL FAA 704224-40	
ESV:		Bearing [True]: 43.0° to 123.0° Bearing [Mag]: 42.0° to 122.0°				Arc Distance: Out to 102.0 NM Altitude: 6000.0 to 18000.0 ft		
2	LBV FAA 755486-29 LBV [IFPA]	N26° 49' 41.466", W081° 23' 29.178"	1.0 E	40	30	110.4	LBV FAA 755486-29	
ESV:		Bearing [True]: 45.0° to 85.0° Bearing [Mag]: 44.0° to 84.0°				Arc Distance: Out to 85.0 NM Altitude: 6000.0 to 18000.0 ft		



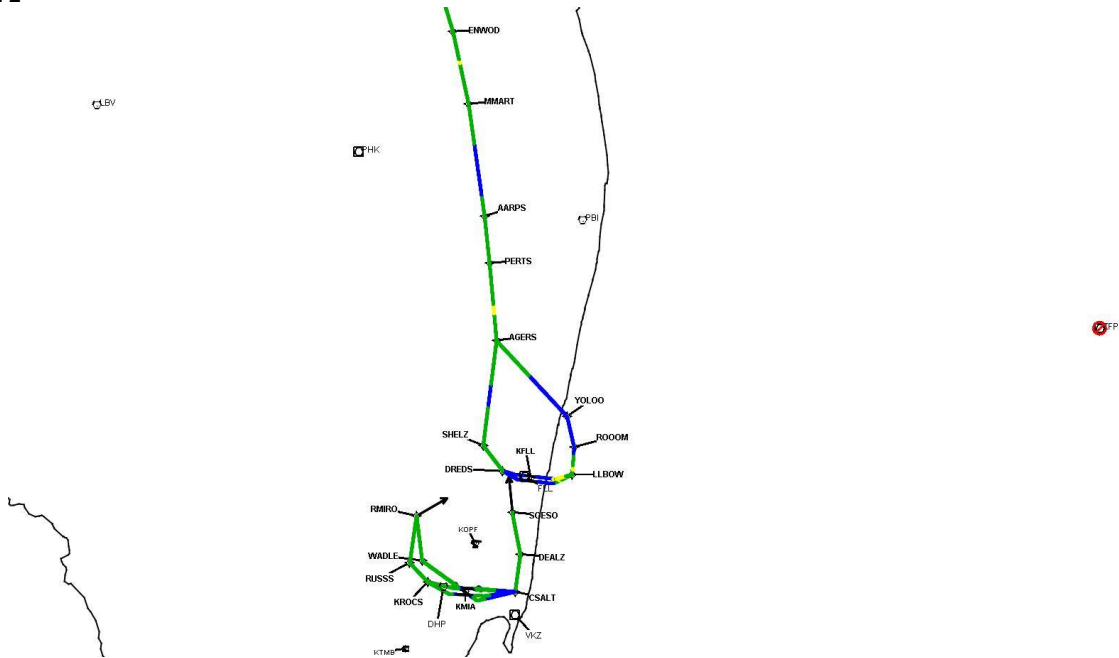
DME DME Assessment Results for AARPS1 path KMIA:RW08L:DER_CSALT

Graphic Depiction 1



DME DME Assessment Results for AARPS1 path KMIA:RW08L:DER_CSALT

Graphic Depiction 2



Graphic Depiction 3



DME DME Assessment Results for AARPS1 path KMIA:RW08R:DER_CSALT

Results Summary

Flyability:	Completed
DME/DME:	Completed - No Critical DMEs
Name:	Miles CTR Carpenter
Project File:	C:\Users\Miles CTR Carpenter\Desktop\KFLI SIDs DME\KFLI AARPS SID DME\KFLI AARPS1 SID DME_03.18.2021.tgs
Output File:	C:\Users\Miles CTR Carpenter\Desktop\KFLI SIDs DME\KFLI AARPS SID DME\KFLI [IFPA] AARPS1 20210318_1132 EDT\KMIA-RW08R-DER_CSALT\KFLI AARPS1 SID KMIA RW08R CSALT 20210318_1132 EDT.pdf
Procedure Name:	AARPS1
Software: DmeDmePlugin:	6.2.0
Date/Time:	03/18/2021 11:32 EDT
Databases:	DTED 0max

Failures

No Failures

Warnings

No Warnings

Notes For Flight Check

None

Flight Plan

Name	Type	Lat/Lon	Altitude (ft)	VNAV Mode	Ground Speed (kts)	Turn Type	Leg Type
KMIA:RW08R:DER	WP	N25° 48' 07.265", W080° 16' 10.328"	8.9	VNAV	130	FLY_OVER	TF
CSALT	WP	N25° 48' 23.360", W080° 09' 38.320"	1500	VNAV	200	FLY_BY	TF
Climb Gradient: 500.0 ft/NM up to 520.0 ft MSL 200.0 ft/NM							

Flyability

Flight Type:	SID
Selected Airport:	KFLI [IFPA]
Climb Gradient:	500.0 ft/NM up to 520.0 ft MSL 200.0 ft/NM
Speeds:	130 at the Runway DER
	145 at the end of the VA or VI leg
	200 Ground Speed to 11000 FT
	240 Ground Speed to 18000 FT
	260 Ground Speed to 24000 FT
	340 Ground Speed above 24000 FT
Descent During a Turn:	Allowed
VNAV Mode:	Flight Plan

DME DME Assessment Results for AARPS1 path KMIA:RW08R:DER_CSALT

DME/DME	
RNP:	RNP 2
Flight Mode:	Manual
Line of Sight (DTED Level 0 Max):	Evaluated
Inertial Drift:	Enabled
Initial Drift:	0.558 NM
INS Drift Rate:	8.0 NM/Hour
Range Mode:	OSV
RNP Edges:	Evaluated
Min DME Range:	3.0 NM
DME Types:	DME, VOR-DME, VORTAC
DME Include Angles:	30 to 150
Critical DMEs:	Not Allowed
DoD Facilities:	Not included
Foreign Facilities:	Included
High DMEs:	Included
Low DMEs:	Included
Terminal DMEs:	Included
Flight Check DMEs:	Not selected
Higher Altitudes:	Not Evaluated
Near Maximum Altitude:	Not Evaluated
Automatic ESVs:	Not enabled
Disabled DMEs:	ZFP,ZQA,ZTC

DME/DME (Continued)										
DMEs Used										
#	Name	Lat/Lon	MAGVAR	Range	Type	Source	Critical	Status	Time	Distance
1	VKZ	N25° 45' 06.846", W080° 09' 15.996"	4.0 W	130	H	IFPA	NO	Enabled	49.4 %	46.1 %
2	FLL	N26° 04' 26.183", W080° 09' 59.192"	6.0 W	130	H	IFPA	NO	Enabled	51.5 %	48.1 %
3	DHP	N25° 47' 59.866", W080° 20' 56.526"	4.0 W	130	H	IFPA	NO	Enabled	48.1 %	45.1 %
4	ZFP	N26° 33' 19.250", W078° 41' 52.250"	3.0 W	130	H	IFPA	NO	Disabled		
5	ZQA	N25° 01' 31.860", W077° 26' 47.140"	6.0 W	130	H	IFPA	NO	Disabled		
6	ZTC	N26° 44' 05.000", W077° 22' 45.000"	5.0 W	130	H	IFPA	NO	Disabled		

Flight Check DME Selection						
Distance [NM]	Selected DMEs					Alternate
0.0						
0.4	VKZ	FLL				
0.6	VKZ	FLL	DHP			
3.2	FLL	DHP				
3.3						

Inertial Drift Segments			
#	Start Location	End Location	Length [NM]
1	N25° 48' 07.362", W080° 16' 07.987"	N25° 48' 08.424", W080° 15' 42.237"	0.3877
2	N25° 48' 16.300", W080° 12' 31.010"	N25° 48' 23.360", W080° 09' 38.320"	2.6001

Available DMEs by Waypoints		
Waypoint Before	Waypoint After	DME List
KMIA:RW08R:DER	CSALT	VKZ, FLL, DHP

DME DME Assessment Results for AARPS1 path KMIA:RW08R:DER_CSALT

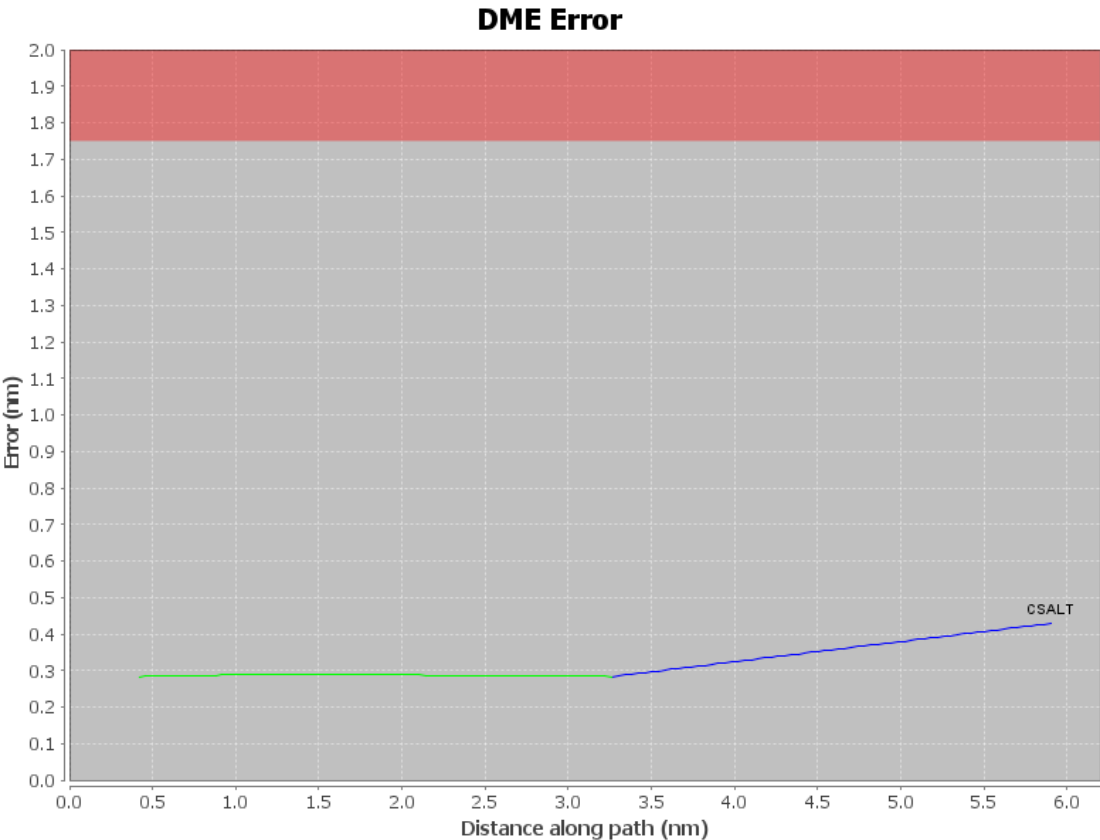
User Data Files

File Name

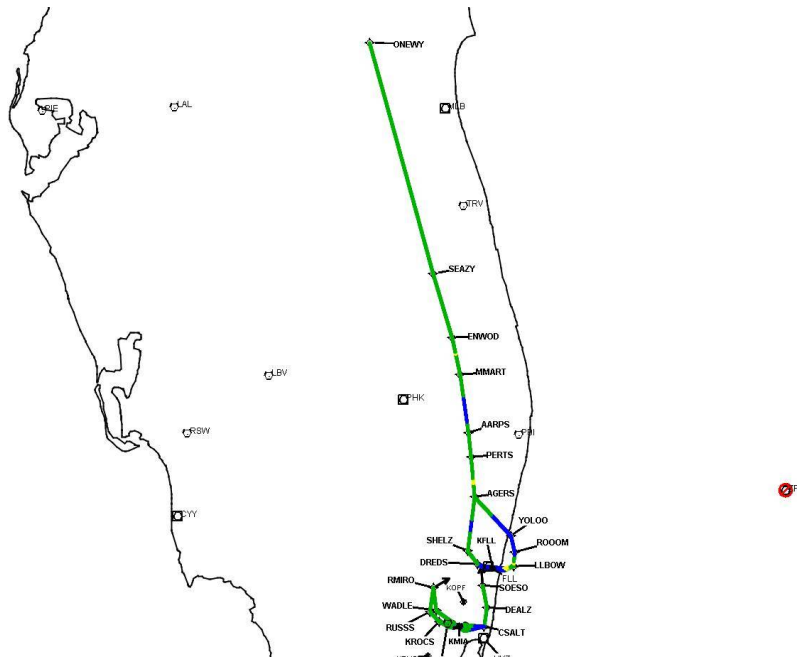
None

User DMEs

#	Name	Lat/Lon	MAGVAR	Range	Elevation [ft]	Frequency	Replaces	Status
1	LAL FAA 704224-40 LAL [IFPA]	N27° 59' 10.310", W082° 00' 50.056"	1.0 E	130	133.8	116.0	LAL FAA 704224-40	
ESV:		Bearing [True]: 43.0° to 123.0° Bearing [Mag]: 42.0° to 122.0°				Arc Distance: Out to 102.0 NM Altitude: 6000.0 to 18000.0 ft		
2	LBV FAA 755486-29 LBV [IFPA]	N26° 49' 41.466", W081° 23' 29.178"	1.0 E	40	30	110.4	LBV FAA 755486-29	
ESV:		Bearing [True]: 45.0° to 85.0° Bearing [Mag]: 44.0° to 84.0°				Arc Distance: Out to 85.0 NM Altitude: 6000.0 to 18000.0 ft		

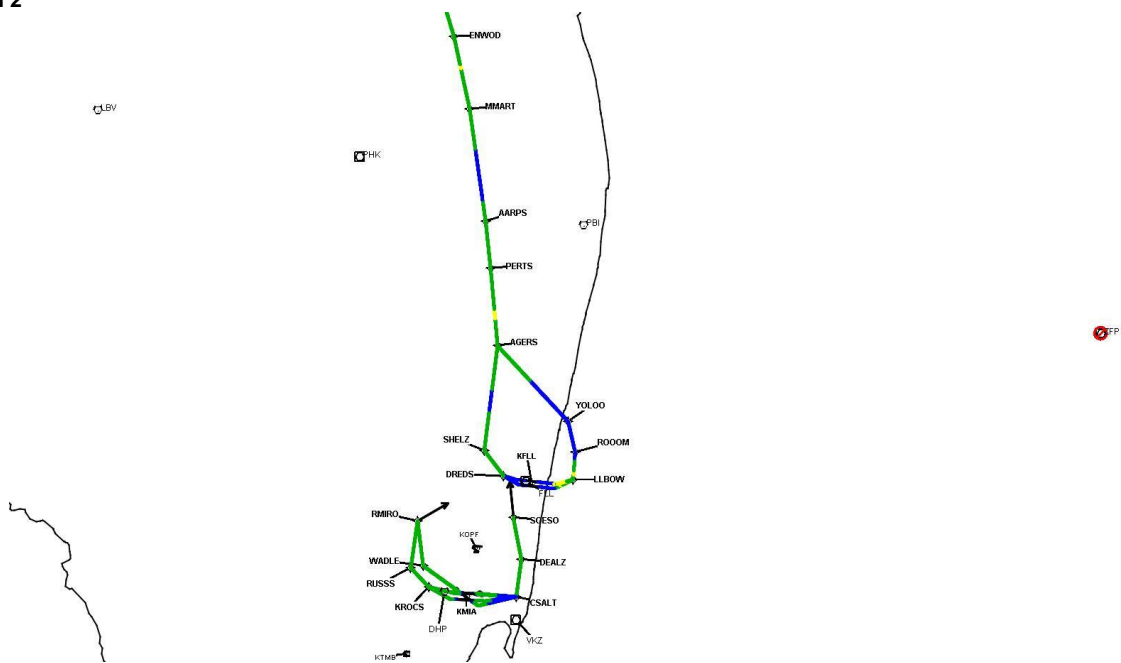


Graphic Depiction 1



DME DME Assessment Results for AARPS1 path KMIA:RW08R:DER_CSALT

Graphic Depiction 2



Graphic Depiction 3



DME DME Assessment Results for AARPS1 path KMIA:RW09:DER_SOESO

Results Summary

Flyability:	Completed
DME/DME:	Completed - No Critical DMEs
Name:	Miles CTR Carpenter
Project File:	C:\Users\Miles CTR Carpenter\Desktop\KFLI SIDs DME\KFLI AARPS SID DME\KFLI AARPS1 SID DME_03.18.2021.tgs
Output File:	C:\Users\Miles CTR Carpenter\Desktop\KFLI SIDs DME\KFLI AARPS SID DME\KFLI [IFPA] AARPS1 20210318_1132 EDT\KMIA-RW09-DER_SOESO\KFLI AARPS1 SID KMIA RW09 SOESO 20210318_1132 EDT.pdf
Procedure Name:	AARPS1
Software: DmeDmePlugin:	6.2.0
Date/Time:	03/18/2021 11:32 EDT
Databases:	DTED 0max

Failures

No Failures

Warnings

No Warnings

Notes For Flight Check

None

Flight Plan

Name	Type	Lat/Lon	Altitude (ft)	VNAV Mode	Ground Speed (kts)	Turn Type	Leg Type
KMIA:RW09:DER	WP	N25° 47' 15.833", W080° 16' 31.171"	8.9	VNAV	130	FLY_BY	TF
CSALT	WP	N25° 48' 23.360", W080° 09' 38.320"	1500	VNAV	200	FLY_BY	TF
DEALZ	WP	N25° 53' 38.460", W080° 09' 26.380"	2500	VNAV	200	FLY_BY	TF
SOESO	WP	N25° 59' 17.920", W080° 11' 24.530"	5000	VNAV	200	FLY_BY	TF
Climb Gradient: 500.0 ft/NM up to 520.0 ft MSL 200.0 ft/NM							

Flyability

Flight Type:	SID
Selected Airport:	KFLI [IFPA]
Climb Gradient:	500.0 ft/NM up to 520.0 ft MSL 200.0 ft/NM
Speeds:	130 at the Runway DER
	145 at the end of the VA or VI leg
	200 Ground Speed to 11000 FT
	240 Ground Speed to 18000 FT
	260 Ground Speed to 24000 FT
	340 Ground Speed above 24000 FT
Descent During a Turn:	Allowed
VNAV Mode:	Flight Plan

DME DME Assessment Results for AARPS1 path KMIA:RW09:DER_SOESO

DME/DME	
RNP:	RNP 2
Flight Mode:	Manual
Line of Sight (DTED Level 0 Max):	Evaluated
Inertial Drift:	Enabled
Initial Drift:	0.558 NM
INS Drift Rate:	8.0 NM/Hour
Range Mode:	OSV
RNP Edges:	Evaluated
Min DME Range:	3.0 NM
DME Types:	DME, VOR-DME, VORTAC
DME Include Angles:	30 to 150
Critical DMEs:	Not Allowed
DoD Facilities:	Not included
Foreign Facilities:	Included
High DMEs:	Included
Low DMEs:	Included
Terminal DMEs:	Included
Flight Check DMEs:	Not selected
Higher Altitudes:	Not Evaluated
Near Maximum Altitude:	Not Evaluated
Automatic ESVs:	Not enabled
Disabled DMEs:	ZFP,ZQA,ZTC

DME/DME (Continued)										
DMEs Used										
#	Name	Lat/Lon	MAGVAR	Range	Type	Source	Critical	Status	Time	Distance
1	VKZ	N25° 45' 06.846", W080° 09' 15.996"	4.0 W	130	H	IFPA	NO	Enabled	74.9 %	77.8 %
2	FLL	N26° 04' 26.183", W080° 09' 59.192"	6.0 W	130	H	IFPA	NO	Enabled	34.8 %	33.5 %
3	DHP	N25° 47' 59.866", W080° 20' 56.526"	4.0 W	130	H	IFPA	NO	Enabled	74.1 %	77.2 %
4	ZFP	N26° 33' 19.250", W078° 41' 52.250"	3.0 W	130	H	IFPA	NO	Disabled		
5	ZQA	N25° 01' 31.860", W077° 26' 47.140"	6.0 W	130	H	IFPA	NO	Disabled		
6	ZTC	N26° 44' 05.000", W077° 22' 45.000"	5.0 W	130	H	IFPA	NO	Disabled		

Flight Check DME Selection						
Distance [NM]	Selected DMEs					Alternate
0.0						
0.5	VKZ	FLL				
0.6	VKZ	FLL	DHP			
2.8						
2.9	VKZ	DHP				
3.0						
6.4	VKZ	DHP				
9.0	VKZ	DHP	FLL			
11.5	VKZ	DHP				
11.6	FLL	DHP	VKZ			
12.7	VKZ	DHP				

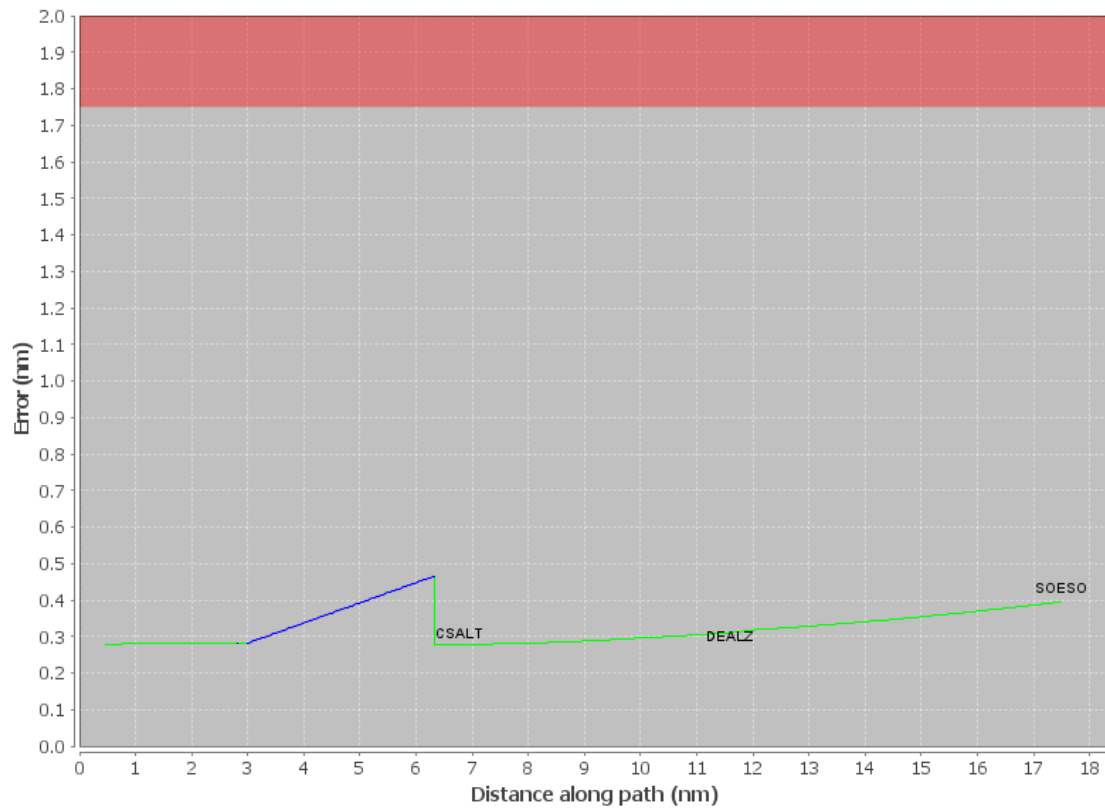
Inertial Drift Segments			
#	Start Location	End Location	Length [NM]
1	N25° 47' 15.929", W080° 16' 28.830"	N25° 47' 17.088", W080° 16' 00.742"	0.423
2	N25° 47' 34.308", W080° 13' 25.705"	N25° 47' 34.866", W080° 13' 23.122"	0.04
3	N25° 47' 37.098", W080° 13' 12.787"	N25° 48' 23.360", W080° 09' 38.320"	3.3096

DME DME Assessment Results for AARPS1 path KMIA:RW09:DER_SOESO

Available DMEs by Waypoints		
Waypoint Before	Waypoint After	DME List
KMIA:RW09:DER	CSALT	VKZ, FLL, DHP
CSALT	DEALZ	VKZ, FLL, DHP
DEALZ	SOESO	VKZ, FLL, DHP

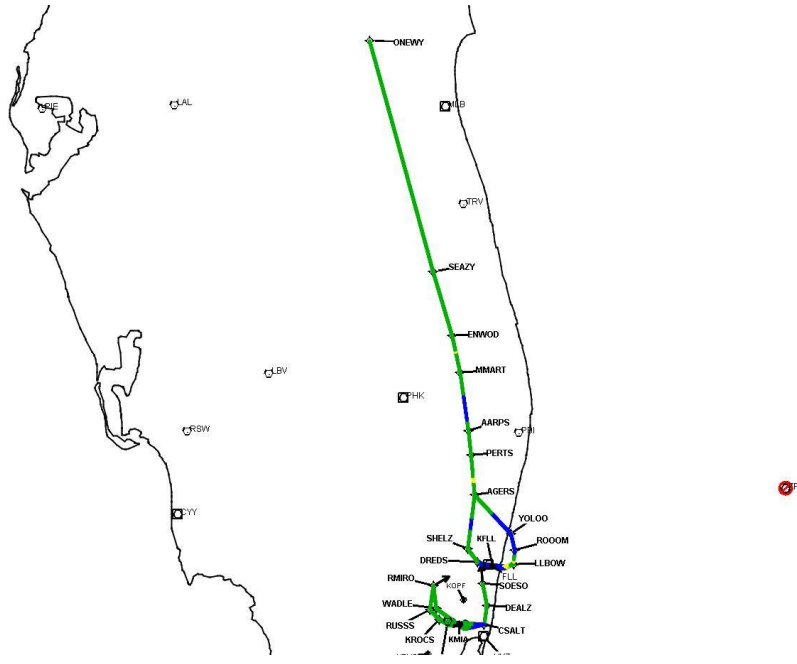
User Data Files								
#	File Name							
None								
User DMEs								
#	Name	Lat/Lon	MAGVAR	Range	Elevation [ft]	Frequency	Replaces	Status
1	LAL FAA 704224-40 LAL [IFPA]	N27° 59' 10.310", W082° 00' 50.056"	1.0 E	130	133.8	116.0	LAL FAA 704224-40	
ESV:		Bearing [True]: 43.0° to 123.0° Bearing [Mag]: 42.0° to 122.0°				Arc Distance: Out to 102.0 NM Altitude: 6000.0 to 18000.0 ft		
2	LBV FAA 755486-29 LBV [IFPA]	N26° 49' 41.466", W081° 23' 29.178"	1.0 E	40	30	110.4	LBV FAA 755486-29	
ESV:		Bearing [True]: 45.0° to 85.0° Bearing [Mag]: 44.0° to 84.0°				Arc Distance: Out to 85.0 NM Altitude: 6000.0 to 18000.0 ft		

DME Error



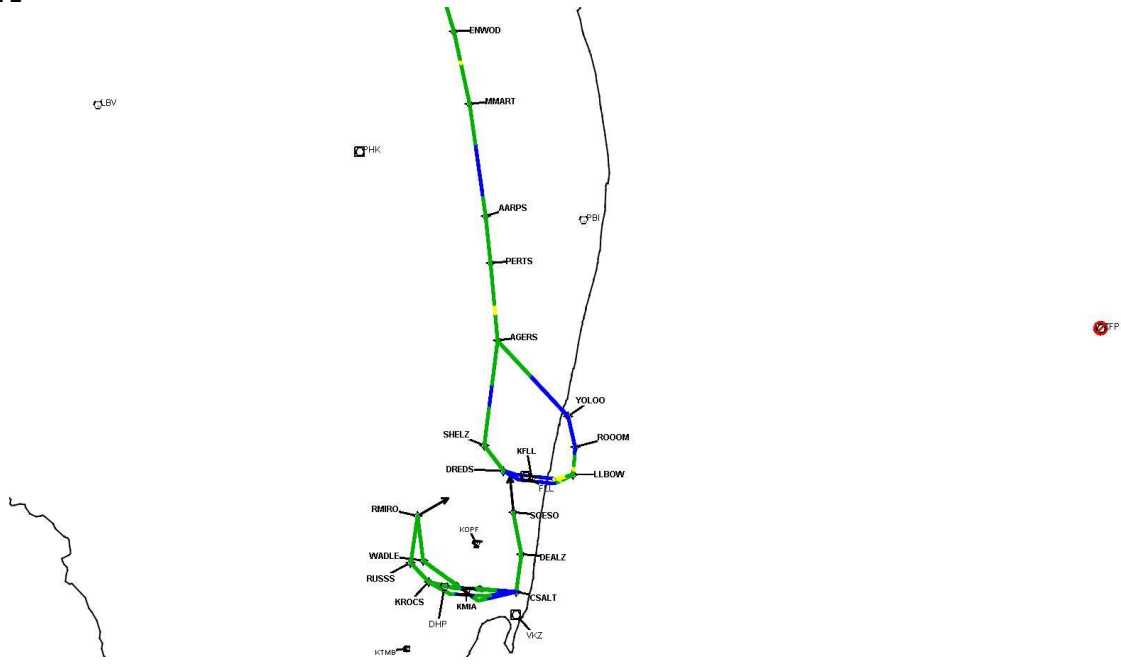
DME DME Assessment Results for AARPS1 path KMIA:RW09:DER_SOESO

Graphic Depiction 1



DME DME Assessment Results for AARPS1 path KMIA:RW09:DER_SOESO

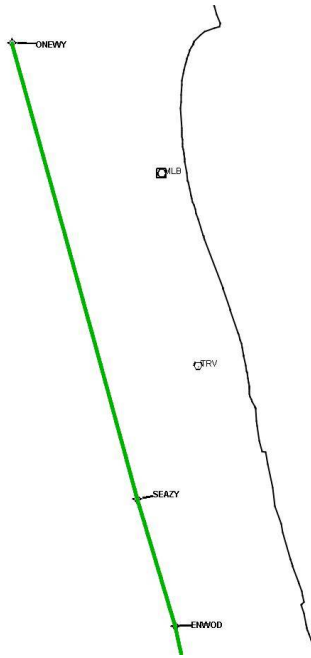
Graphic Depiction 2



DME DME Assessment Results for AARPS1 path KMIA:RW09:DER_SOESO

Graphic Depiction 3

QUAL



DME DME Assessment Results for AARPS1 path KMIA:RW12:DER_CSALT

Results Summary

Flyability:	Completed
DME/DME:	Completed - No Critical DMEs
Name:	Miles CTR Carpenter
Project File:	C:\Users\Miles CTR Carpenter\Desktop\KFLI SIDs DME\KFLI AARPS SID DME\KFLI AARPS1 SID DME_03.18.2021.tgs
Output File:	C:\Users\Miles CTR Carpenter\Desktop\KFLI SIDs DME\KFLI AARPS SID DME\KFLI [IFPA] AARPS1 20210318_1132 EDT\KMIA-RW12-DER_CSALT\KFLI AARPS1 SID KMIA RW12 CSALT 20210318_1132 EDT.pdf
Procedure Name:	AARPS1
Software: DmeDmePlugin:	6.2.0
Date/Time:	03/18/2021 11:32 EDT
Databases:	DTED 0max

Failures

No Failures

Warnings

No Warnings

Notes For Flight Check

None

Flight Plan

Name	Type	Lat/Lon	Altitude (ft)	VNAV Mode	Ground Speed (kts)	Turn Type	Leg Type
KMIA:RW12:DER	WP	N25° 47' 11.822", W080° 16' 39.081"	8.8	VNAV	130	FLY_BY	TF
CSALT	WP	N25° 48' 23.360", W080° 09' 38.320"	1500	VNAV	200	FLY_BY	TF
Climb Gradient: 500.0 ft/NM up to 520.0 ft MSL 200.0 ft/NM							

Flyability

Flight Type:	SID
Selected Airport:	KFLI [IFPA]
Climb Gradient:	500.0 ft/NM up to 520.0 ft MSL 200.0 ft/NM
Speeds:	130 at the Runway DER
	145 at the end of the VA or VI leg
	200 Ground Speed to 11000 FT
	240 Ground Speed to 18000 FT
	260 Ground Speed to 24000 FT
	340 Ground Speed above 24000 FT
Descent During a Turn:	Allowed
VNAV Mode:	Flight Plan

DME DME Assessment Results for AARPS1 path KMIA:RW12:DER_CSALT

DME/DME	
RNP:	RNP 2
Flight Mode:	Manual
Line of Sight (DTED Level 0 Max):	Evaluated
Inertial Drift:	Enabled
Initial Drift:	0.558 NM
INS Drift Rate:	8.0 NM/Hour
Range Mode:	OSV
RNP Edges:	Evaluated
Min DME Range:	3.0 NM
DME Types:	DME, VOR-DME, VORTAC
DME Include Angles:	30 to 150
Critical DMEs:	Not Allowed
DoD Facilities:	Not included
Foreign Facilities:	Included
High DMEs:	Included
Low DMEs:	Included
Terminal DMEs:	Included
Flight Check DMEs:	Not selected
Higher Altitudes:	Not Evaluated
Near Maximum Altitude:	Not Evaluated
Automatic ESVs:	Not enabled
Disabled DMEs:	ZFP,ZQA,ZTC

DME/DME (Continued)										
DMEs Used										
#	Name	Lat/Lon	MAGVAR	Range	Type	Source	Critical	Status	Time	Distance
1	VKZ	N25° 45' 06.846", W080° 09' 15.996"	4.0 W	130	H	IFPA	NO	Enabled	34.9 %	32.8 %
2	FLL	N26° 04' 26.183", W080° 09' 59.192"	6.0 W	130	H	IFPA	NO	Enabled	34.9 %	32.8 %
3	DHP	N25° 47' 59.866", W080° 20' 56.526"	4.0 W	130	H	IFPA	NO	Enabled	34.9 %	32.8 %
4	ZFP	N26° 33' 19.250", W078° 41' 52.250"	3.0 W	130	H	IFPA	NO	Disabled		
5	ZQA	N25° 01' 31.860", W077° 26' 47.140"	6.0 W	130	H	IFPA	NO	Disabled		
6	ZTC	N26° 44' 05.000", W077° 22' 45.000"	5.0 W	130	H	IFPA	NO	Disabled		

Flight Check DME Selection						
Distance [NM]	Selected DMEs					Alternate
0.0						
0.5	VKZ	FLL	DHP			
2.8						

Inertial Drift Segments			
#	Start Location	End Location	Length [NM]
1	N25° 47' 10.779", W080° 16' 37.040"	N25° 46' 57.208", W080° 16' 10.517"	0.4583
2	N25° 47' 05.082", W080° 13' 51.521"	N25° 48' 23.360", W080° 09' 38.320"	4.0247

Available DMEs by Waypoints		
Waypoint Before	Waypoint After	DME List
KMIA:RW12:DER	CSALT	VKZ, FLL, DHP

DME DME Assessment Results for AARPS1 path KMIA:RW12:DER_CSALT

User Data Files

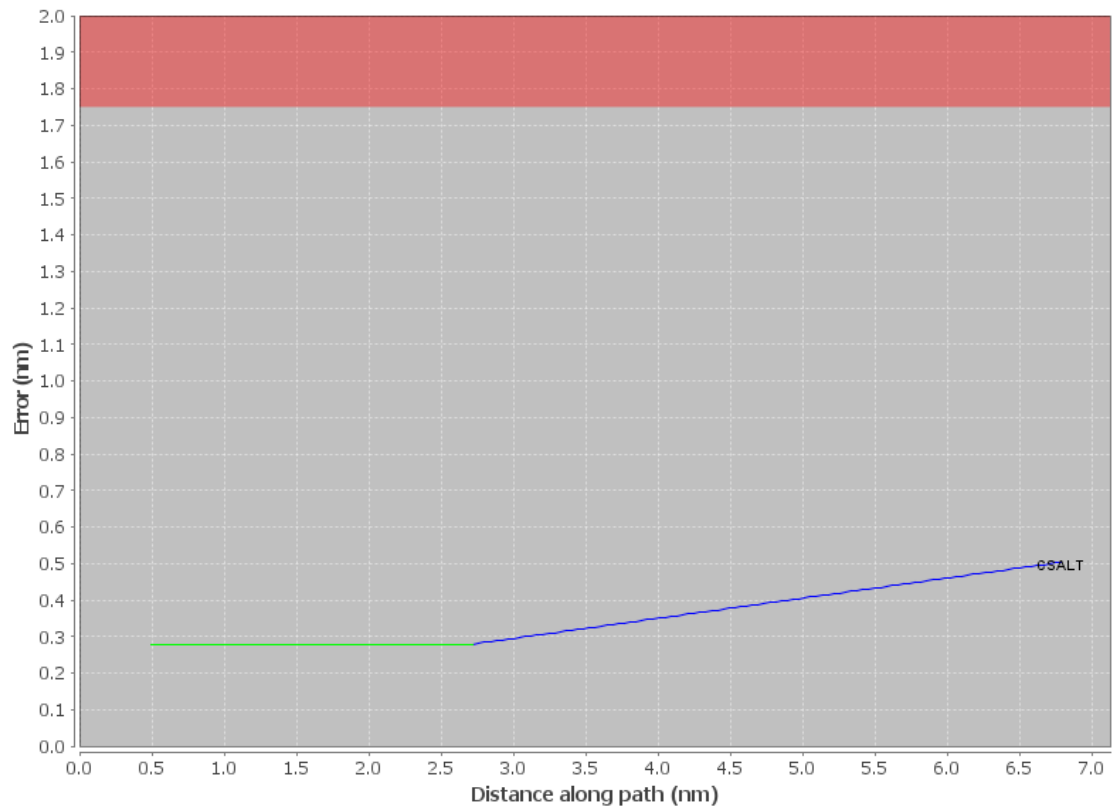
File Name

None

User DMEs

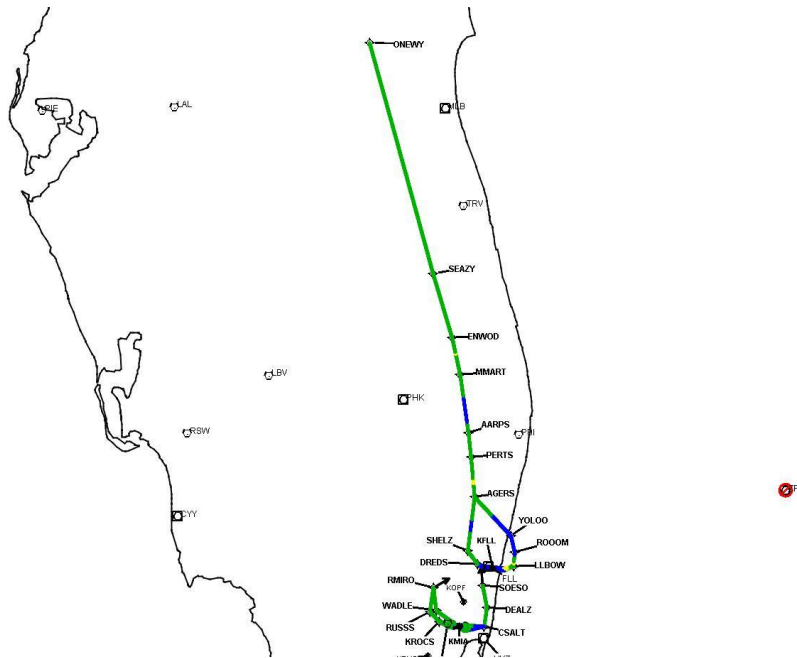
#	Name	Lat/Lon	MAGVAR	Range	Elevation [ft]	Frequency	Replaces	Status
1	LAL FAA 704224-40 LAL [IFPA]	N27° 59' 10.310", W082° 00' 50.056"	1.0 E	130	133.8	116.0	LAL FAA 704224-40	
ESV:		Bearing [True]: 43.0° to 123.0° Bearing [Mag]: 42.0° to 122.0°				Arc Distance: Out to 102.0 NM Altitude: 6000.0 to 18000.0 ft		
2	LBV FAA 755486-29 LBV [IFPA]	N26° 49' 41.466", W081° 23' 29.178"	1.0 E	40	30	110.4	LBV FAA 755486-29	
ESV:		Bearing [True]: 45.0° to 85.0° Bearing [Mag]: 44.0° to 84.0°				Arc Distance: Out to 85.0 NM Altitude: 6000.0 to 18000.0 ft		

DME Error



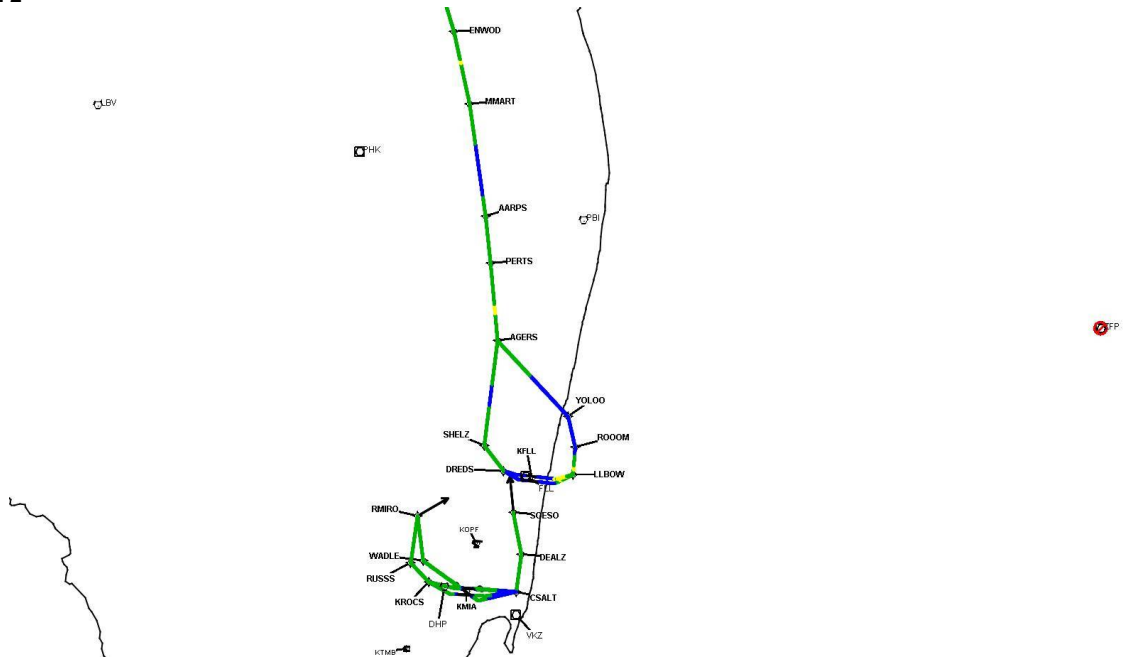
DME DME Assessment Results for AARPS1 path KMIA:RW12:DER_CSALT

Graphic Depiction 1



DME DME Assessment Results for AARPS1 path KMIA:RW12:DER_CSALT

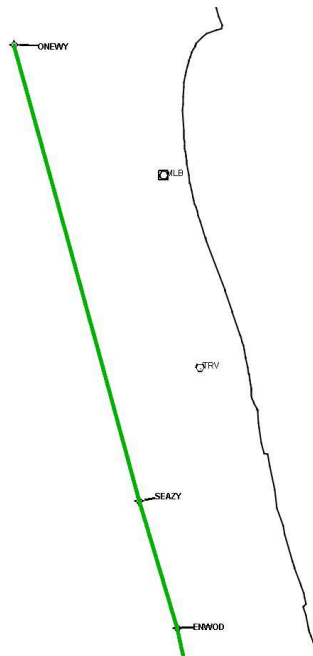
Graphic Depiction 2



DME DME Assessment Results for AARPS1 path KMIA:RW12:DER_CSALT

Graphic Depiction 3

QUAL



DME DME Assessment Results for AARPS1 path KMIA:RW26L:DER_RMIRO

Results Summary

Flyability:	Completed
DME/DME:	Completed - No Critical DMEs
Name:	Miles CTR Carpenter
Project File:	C:\Users\Miles CTR Carpenter\Desktop\KFLS SIDs DME\KFLS AARPS SID DME\KFLS AARPS1 SID DME_03.18.2021.tgs
Output File:	C:\Users\Miles CTR Carpenter\Desktop\KFLS SIDs DME\KFLS AARPS SID DME\KFLS [IFPA] AARPS1 20210318_1132 EDT\KMIA-RW26L-DER_RMIRO\KFLS AARPS1 SID KMIA RW26L RMIRO 20210318_1132 EDT.pdf
Procedure Name:	AARPS1
Software: DmeDmePlugin:	6.2.0
Date/Time:	03/18/2021 11:32 EDT
Databases:	DTED 0max

Failures

No Failures

Warnings

No Warnings

Notes For Flight Check

None

Flight Plan

Name	Type	Lat/Lon	Altitude (ft)	VNAV Mode	Ground Speed (kts)	Turn Type	Leg Type
KMIA:RW26L:DER	WP	N25° 48' 02.518", W080° 18' 05.159"	8.5	VNAV	130	FLY_BY	TF
KROCS	WP	N25° 48' 28.478", W080° 23' 34.651"	1000	VNAV	200	FLY_BY	TF
RUSSS	WP	N25° 50' 51.858", W080° 26' 42.601"	1800	VNAV	200	FLY_BY	TF
RMIRO	WP	N25° 57' 28.324", W080° 26' 25.018"	5000	VNAV	200	FLY_BY	TF
Climb Gradient: 500.0 ft/NM up to 520.0 ft MSL 200.0 ft/NM							

Flyability

Flight Type:	SID
Selected Airport:	KFLS [IFPA]
Climb Gradient:	500.0 ft/NM up to 520.0 ft MSL 200.0 ft/NM
Speeds:	130 at the Runway DER
	145 at the end of the VA or VI leg
	200 Ground Speed to 11000 FT
	240 Ground Speed to 18000 FT
	260 Ground Speed to 24000 FT
	340 Ground Speed above 24000 FT
Descent During a Turn:	Allowed
VNAV Mode:	Flight Plan

DME DME Assessment Results for AARPS1 path KMIA:RW26L:DER_RMIRO

DME/DME	
RNP:	RNP 2
Flight Mode:	Manual
Line of Sight (DTED Level 0 Max):	Evaluated
Inertial Drift:	Enabled
Initial Drift:	0.558 NM
INS Drift Rate:	8.0 NM/Hour
Range Mode:	OSV
RNP Edges:	Evaluated
Min DME Range:	3.0 NM
DME Types:	DME, VOR-DME, VORTAC
DME Include Angles:	30 to 150
Critical DMEs:	Not Allowed
DoD Facilities:	Not included
Foreign Facilities:	Included
High DMEs:	Included
Low DMEs:	Included
Terminal DMEs:	Included
Flight Check DMEs:	Not selected
Higher Altitudes:	Not Evaluated
Near Maximum Altitude:	Not Evaluated
Automatic ESVs:	Not enabled
Disabled DMEs:	ZFP,ZQA,ZTC

DME/DME (Continued)										
DMEs Used										
#	Name	Lat/Lon	MAGVAR	Range	Type	Source	Critical	Status	Time	Distance
1	VKZ	N25° 45' 06.846", W080° 09' 15.996"	4.0 W	130	H	IFPA	NO	Enabled	95.8 %	97 %
2	FLL	N26° 04' 26.183", W080° 09' 59.192"	6.0 W	130	H	IFPA	NO	Enabled	95.8 %	97 %
3	DHP	N25° 47' 59.866", W080° 20' 56.526"	4.0 W	130	H	IFPA	NO	Enabled	56.3 %	61.7 %
4	ZFP	N26° 33' 19.250", W078° 41' 52.250"	3.0 W	130	H	IFPA	NO	Disabled		
5	ZQA	N25° 01' 31.860", W077° 26' 47.140"	6.0 W	130	H	IFPA	NO	Disabled		
6	ZTC	N26° 44' 05.000", W077° 22' 45.000"	5.0 W	130	H	IFPA	NO	Disabled		

Flight Check DME Selection						
Distance [NM]	Selected DMEs					Alternate
0.0						
0.5	VKZ	FLL				
5.8	FLL	DHP	VKZ			

Inertial Drift Segments			
#	Start Location	End Location	Length [NM]
1	N25° 48' 02.421", W080° 18' 07.502"	N25° 48' 01.255", W080° 18' 35.614"	0.4233

Available DMEs by Waypoints		
Waypoint Before	Waypoint After	DME List
KMIA:RW26L:DER	KROCS	VKZ, FLL
KROCS	RUSSS	VKZ, FLL, DHP
RUSSS	RMIRO	VKZ, FLL, DHP

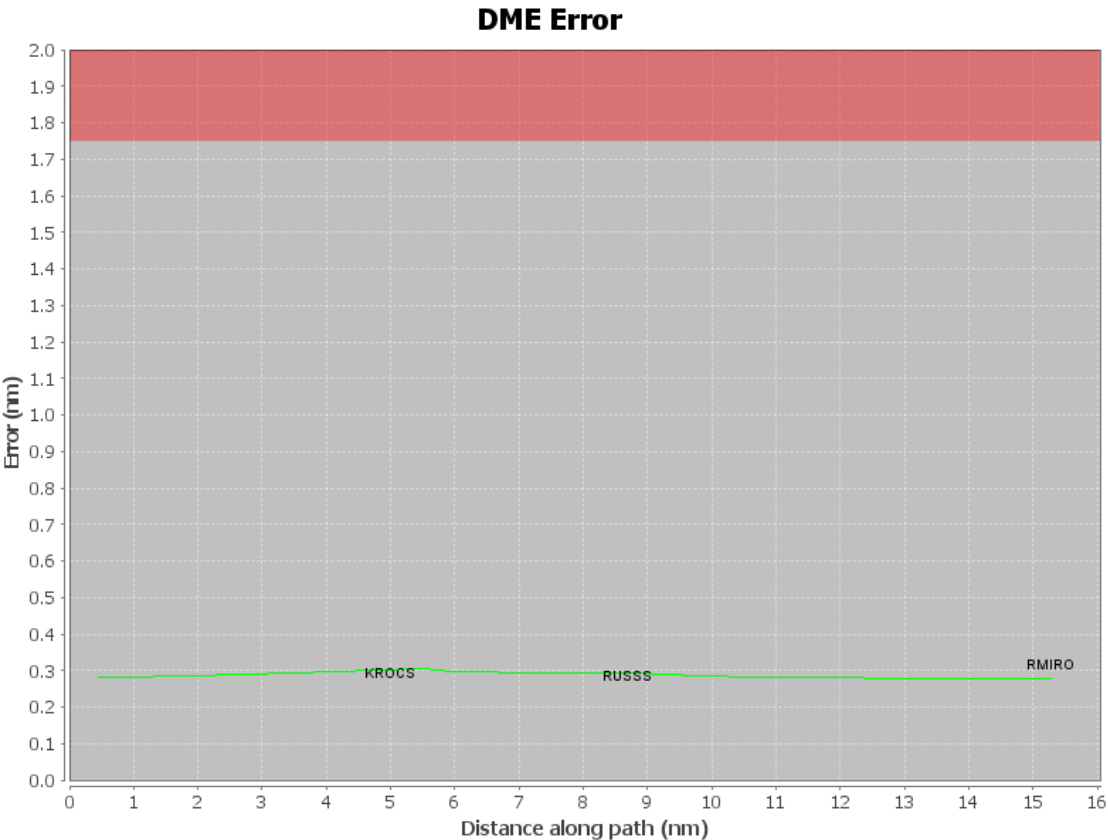
DME DME Assessment Results for AARPS1 path KMIA:RW26L:DER_RMIRO

User Data Files

#	File Name
	None

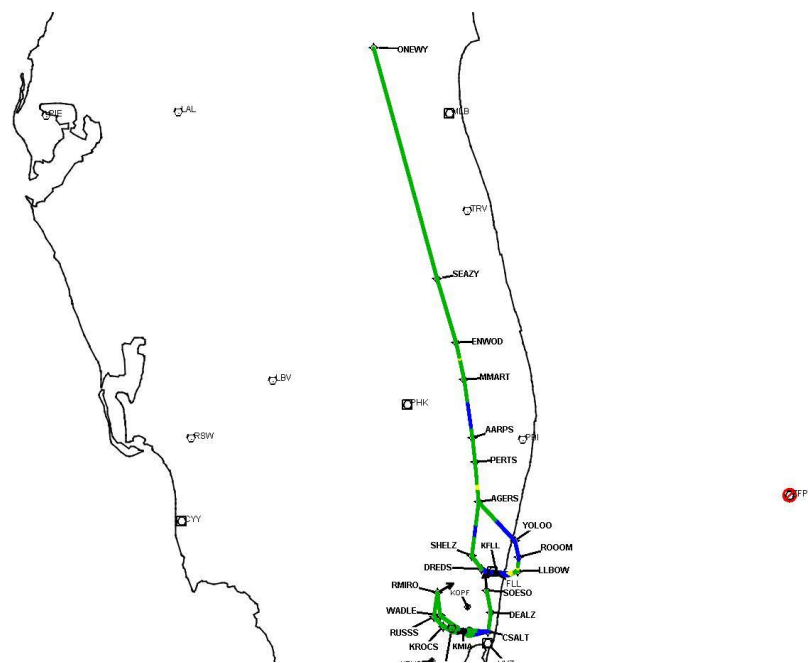
User DMEs

#	Name	Lat/Lon	MAGVAR	Range	Elevation [ft]	Frequency	Replaces	Status
1	LAL FAA 704224-40 LAL [IFPA]	N27° 59' 10.310", W082° 00' 50.056"	1.0 E	130	133.8	116.0	LAL FAA 704224-40	
ESV:		Bearing [True]: 43.0° to 123.0° Bearing [Mag]: 42.0° to 122.0°				Arc Distance: Out to 102.0 NM Altitude: 6000.0 to 18000.0 ft		
2	LBV FAA 755486-29 LBV [IFPA]	N26° 49' 41.466", W081° 23' 29.178"	1.0 E	40	30	110.4	LBV FAA 755486-29	
ESV:		Bearing [True]: 45.0° to 85.0° Bearing [Mag]: 44.0° to 84.0°				Arc Distance: Out to 85.0 NM Altitude: 6000.0 to 18000.0 ft		



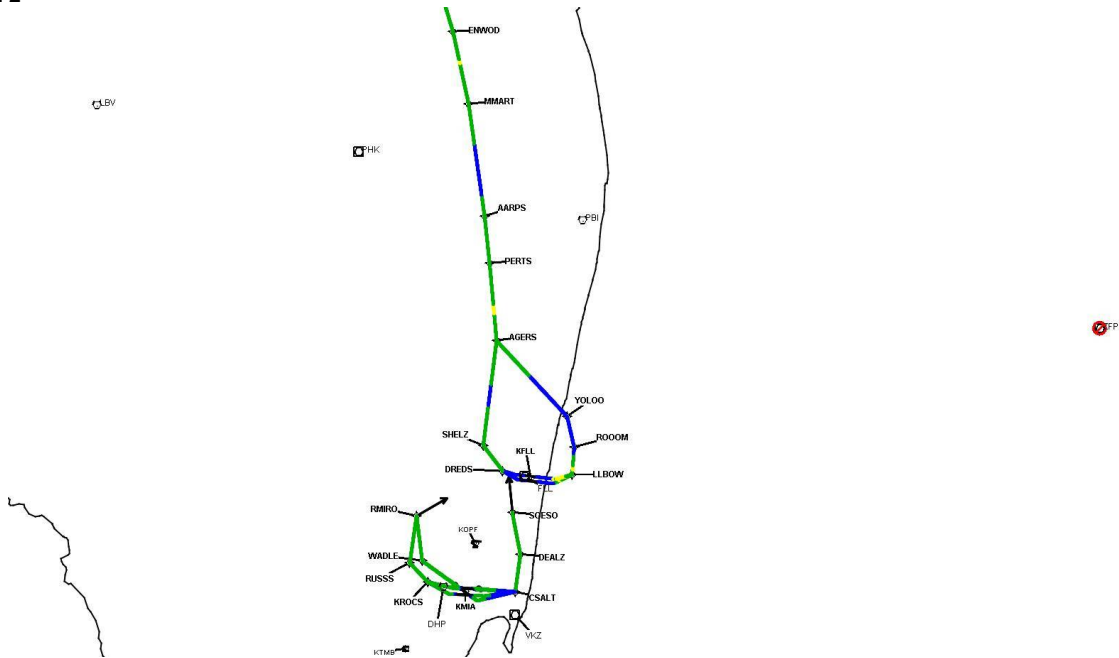
DME DME Assessment Results for AARPS1 path KMIA:RW26L:DER_RMIRO

Graphic Depiction 1



DME DME Assessment Results for AARPS1 path KMIA:RW26L:DER_RMIRO

Graphic Depiction 2



Graphic Depiction 3



DME DME Assessment Results for AARPS1 path KMIA:RW26R:DER_KROCS

Results Summary

Flyability:	Completed
DME/DME:	Completed - No Critical DMEs
Name:	Miles CTR Carpenter
Project File:	C:\Users\Miles CTR Carpenter\Desktop\KFLI SIDs DME\KFLI AARPS SID DME\KFLI AARPS1 SID DME_03.18.2021.tgs
Output File:	C:\Users\Miles CTR Carpenter\Desktop\KFLI SIDs DME\KFLI AARPS SID DME\KFLI [IFPA] AARPS1 20210318_1132 EDT\KMIA-RW26R-DER_KROCS\KFLI AARPS1 SID KMIA RW26R KROCS 20210318_1132 EDT.pdf
Procedure Name:	AARPS1
Software: DmeDmePlugin:	6.2.0
Date/Time:	03/18/2021 11:32 EDT
Databases:	DTED 0max

Failures

No Failures

Warnings

No Warnings

Notes For Flight Check

None

Flight Plan

Name	Type	Lat/Lon	Altitude (ft)	VNAV Mode	Ground Speed (kts)	Turn Type	Leg Type
KMIA:RW26R:DER	WP	N25° 48' 10.432", W080° 18' 05.551"	8.9	VNAV	130	FLY_BY	TF
KROCS	WP	N25° 48' 28.478", W080° 23' 34.651"	1000	VNAV	200	FLY_BY	TF
Climb Gradient: 500.0 ft/NM up to 520.0 ft MSL 200.0 ft/NM							

Flyability

Flight Type:	SID
Selected Airport:	KFLI [IFPA]
Climb Gradient:	500.0 ft/NM up to 520.0 ft MSL 200.0 ft/NM
Speeds:	130 at the Runway DER
	145 at the end of the VA or VI leg
	200 Ground Speed to 11000 FT
	240 Ground Speed to 18000 FT
	260 Ground Speed to 24000 FT
	340 Ground Speed above 24000 FT
Descent During a Turn:	Allowed
VNAV Mode:	Flight Plan

DME DME Assessment Results for AARPS1 path KMIA:RW26R:DER_KROCS

DME/DME	
RNP:	RNP 2
Flight Mode:	Manual
Line of Sight (DTED Level 0 Max):	Evaluated
Inertial Drift:	Enabled
Initial Drift:	0.558 NM
INS Drift Rate:	8.0 NM/Hour
Range Mode:	OSV
RNP Edges:	Evaluated
Min DME Range:	3.0 NM
DME Types:	DME, VOR-DME, VORTAC
DME Include Angles:	30 to 150
Critical DMEs:	Not Allowed
DoD Facilities:	Not included
Foreign Facilities:	Included
High DMEs:	Included
Low DMEs:	Included
Terminal DMEs:	Included
Flight Check DMEs:	Not selected
Higher Altitudes:	Not Evaluated
Near Maximum Altitude:	Not Evaluated
Automatic ESVs:	Not enabled
Disabled DMEs:	ZFP,ZQA,ZTC

DME/DME (Continued)										
DMEs Used										
#	Name	Lat/Lon	MAGVAR	Range	Type	Source	Critical	Status	Time	Distance
1	VKZ	N25° 45' 06.846", W080° 09' 15.996"	4.0 W	130	H	IFPA	NO	Enabled	89 %	90.8 %
2	FLL	N26° 04' 26.183", W080° 09' 59.192"	6.0 W	130	H	IFPA	NO	Enabled	89 %	90.8 %
3	ZFP	N26° 33' 19.250", W078° 41' 52.250"	3.0 W	130	H	IFPA	NO	Disabled		
4	ZQA	N25° 01' 31.860", W077° 26' 47.140"	6.0 W	130	H	IFPA	NO	Disabled		
5	ZTC	N26° 44' 05.000", W077° 22' 45.000"	5.0 W	130	H	IFPA	NO	Disabled		

Flight Check DME Selection						
Distance [NM]	Selected DMEs					Alternate
0.0						
0.5	VKZ	FLL				

Inertial Drift Segments			
#	Start Location	End Location	Length [NM]
1	N25° 48' 10.335", W080° 18' 07.892"	N25° 48' 09.171", W080° 18' 35.983"	0.423

Available DMEs by Waypoints		
Waypoint Before	Waypoint After	DME List
KMIA:RW26R:DER	KROCS	VKZ, FLL

DME DME Assessment Results for AARPS1 path KMIA:RW26R:DER_KROCS

User Data Files

File Name

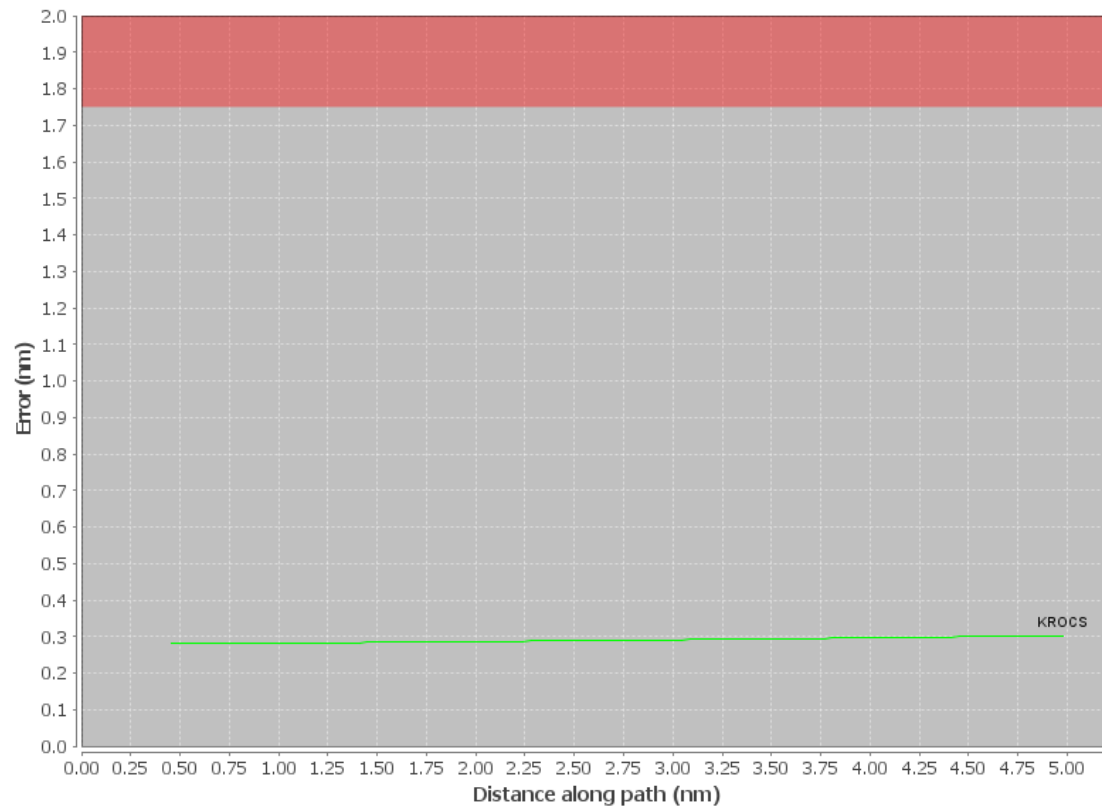
None

User DMEs

#	Name	Lat/Lon	MAGVAR	Range	Elevation [ft]	Frequency	Replaces	Status
1	LAL FAA 704224-40 LAL [IFPA]	N27° 59' 10.310", W082° 00' 50.056"	1.0 E	130	133.8	116.0	LAL FAA 704224-40	
ESV:		Bearing [True]: 43.0° to 123.0° Bearing [Mag]: 42.0° to 122.0°				Arc Distance: Out to 102.0 NM Altitude: 6000.0 to 18000.0 ft		
2	LBV FAA 755486-29 LBV [IFPA]	N26° 49' 41.466", W081° 23' 29.178"	1.0 E	40	30	110.4	LBV FAA 755486-29	
ESV:		Bearing [True]: 45.0° to 85.0° Bearing [Mag]: 44.0° to 84.0°				Arc Distance: Out to 85.0 NM Altitude: 6000.0 to 18000.0 ft		

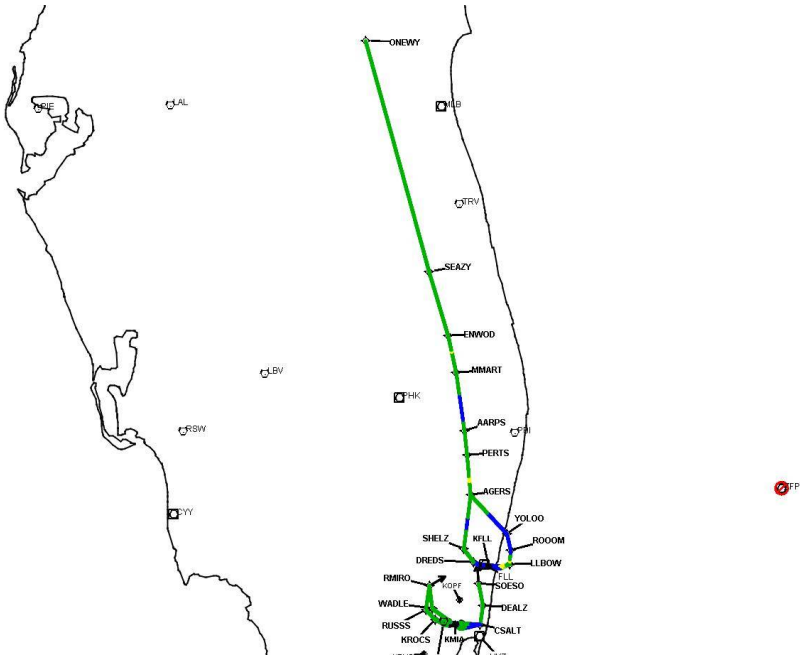
DME DME Assessment Results for AARPS1 path KMIA:RW26R:DER_KROCS

DME Error



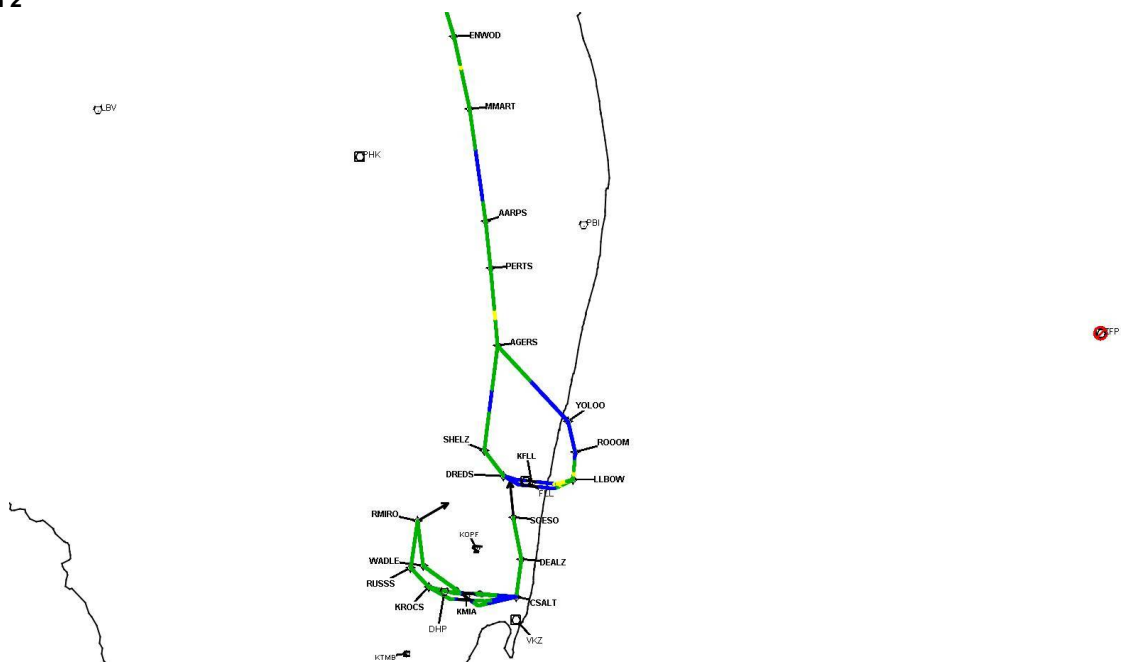
DME DME Assessment Results for AARPS1 path KMIA:RW26R:DER_KROCS

Graphic Depiction 1



DME DME Assessment Results for AARPS1 path KMIA:RW26R:DER_KROCS

Graphic Depiction 2



Graphic Depiction 3



DME DME Assessment Results for AARPS1 path KMIA:RW27:DER_KROCS

Results Summary

Flyability:	Completed
DME/DME:	Completed - No Critical DMEs
Name:	Miles CTR Carpenter
Project File:	C:\Users\Miles CTR Carpenter\Desktop\KFLS SIDs DME\KFLS AARPS SID DME\KFLS AARPS1 SID DME_03.18.2021.tgs
Output File:	C:\Users\Miles CTR Carpenter\Desktop\KFLS SIDs DME\KFLS AARPS SID DME\KFLS [IFPA] AARPS1 20210318_1132 EDT\KMIA-RW27-DER_KROCS\KFLS AARPS1 SID KMIA RW27 KROCS 20210318_1132 EDT.pdf
Procedure Name:	AARPS1
Software: DmeDmePlugin:	6.2.0
Date/Time:	03/18/2021 11:32 EDT
Databases:	DTED 0max

Failures

No Failures

Warnings

No Warnings

Notes For Flight Check

None

Flight Plan

Name	Type	Lat/Lon	Altitude (ft)	VNAV Mode	Ground Speed (kts)	Turn Type	Leg Type
KMIA:RW27:DER	WP	N25° 47' 09.942", W080° 18' 53.417"	8	VNAV	130	FLY_BY	TF
KROCS	WP	N25° 48' 28.478", W080° 23' 34.651"	1000	VNAV	200	FLY_BY	TF
Climb Gradient: 500.0 ft/NM up to 520.0 ft MSL 200.0 ft/NM							

Flyability

Flight Type:	SID
Selected Airport:	KFLS [IFPA]
Climb Gradient:	500.0 ft/NM up to 520.0 ft MSL 200.0 ft/NM
Speeds:	130 at the Runway DER
	145 at the end of the VA or VI leg
	200 Ground Speed to 11000 FT
	240 Ground Speed to 18000 FT
	260 Ground Speed to 24000 FT
	340 Ground Speed above 24000 FT
Descent During a Turn:	Allowed
VNAV Mode:	Flight Plan

DME DME Assessment Results for AARPS1 path KMIA:RW27:DER_KROCS

DME/DME	
RNP:	RNP 2
Flight Mode:	Manual
Line of Sight (DTED Level 0 Max):	Evaluated
Inertial Drift:	Enabled
Initial Drift:	0.558 NM
INS Drift Rate:	8.0 NM/Hour
Range Mode:	OSV
RNP Edges:	Evaluated
Min DME Range:	3.0 NM
DME Types:	DME, VOR-DME, VORTAC
DME Include Angles:	30 to 150
Critical DMEs:	Not Allowed
DoD Facilities:	Not included
Foreign Facilities:	Included
High DMEs:	Included
Low DMEs:	Included
Terminal DMEs:	Included
Flight Check DMEs:	Not selected
Higher Altitudes:	Not Evaluated
Near Maximum Altitude:	Not Evaluated
Automatic ESVs:	Not enabled
Disabled DMEs:	ZFP,ZQA,ZTC

DME/DME (Continued)										
DMEs Used										
#	Name	Lat/Lon	MAGVAR	Range	Type	Source	Critical	Status	Time	Distance
1	VKZ	N25° 45' 06.846", W080° 09' 15.996"	4.0 W	130	H	IFPA	NO	Enabled	85.9 %	88.3 %
2	FLL	N26° 04' 26.183", W080° 09' 59.192"	6.0 W	130	H	IFPA	NO	Enabled	85.9 %	88.3 %
3	ZFP	N26° 33' 19.250", W078° 41' 52.250"	3.0 W	130	H	IFPA	NO	Disabled		
4	ZQA	N25° 01' 31.860", W077° 26' 47.140"	6.0 W	130	H	IFPA	NO	Disabled		
5	ZTC	N26° 44' 05.000", W077° 22' 45.000"	5.0 W	130	H	IFPA	NO	Disabled		

Flight Check DME Selection						
Distance [NM]	Selected DMEs					Alternate
0.0						
0.5	VKZ	FLL				

Inertial Drift Segments			
#	Start Location	End Location	Length [NM]
1	N25° 47' 09.845", W080° 18' 55.762"	N25° 47' 08.484", W080° 19' 28.589"	0.4943

Available DMEs by Waypoints		
Waypoint Before	Waypoint After	DME List
KMIA:RW27:DER	KROCS	VKZ, FLL

DME DME Assessment Results for AARPS1 path KMIA:RW27:DER_KROCS

User Data Files

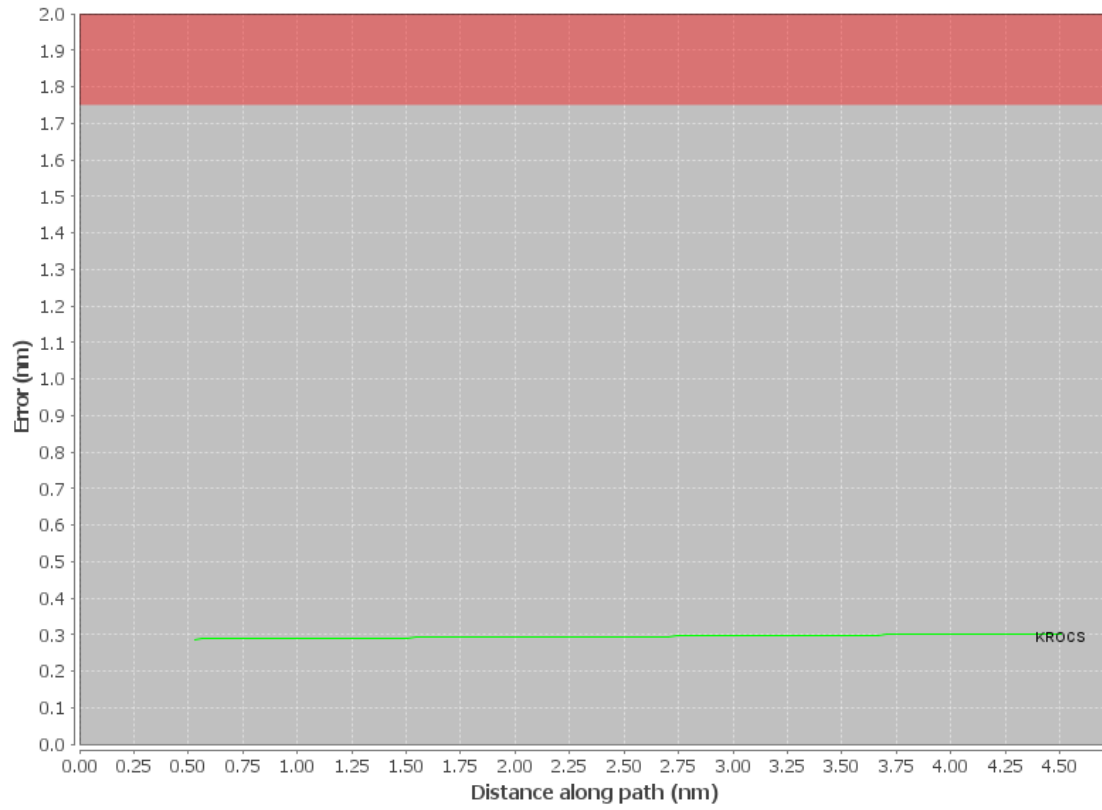
#	File Name
	None

User DMEs

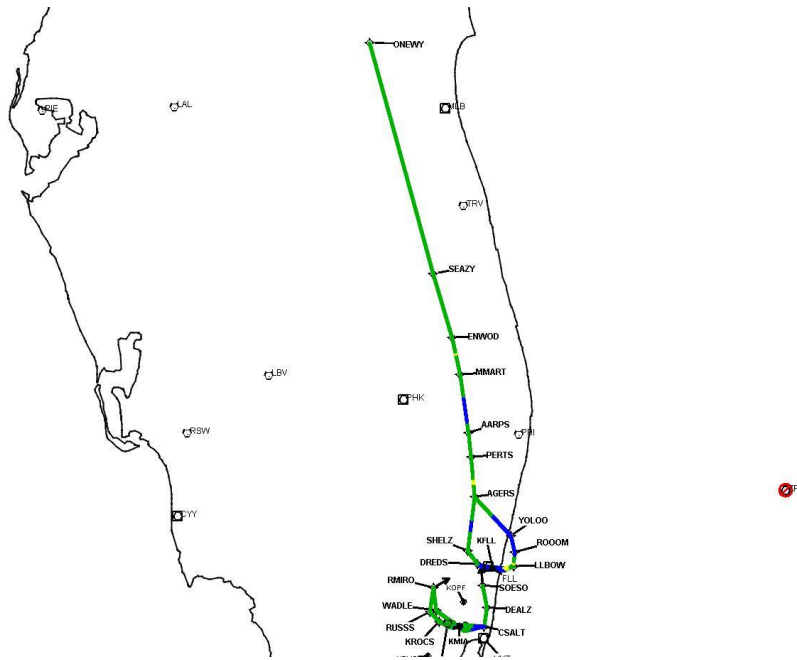
#	Name	Lat/Lon	MAGVAR	Range	Elevation [ft]	Frequency	Replaces	Status
1	LAL FAA 704224-40 LAL [IFPA]	N27° 59' 10.310", W082° 00' 50.056"	1.0 E	130	133.8	116.0	LAL FAA 704224-40	
ESV:		Bearing [True]: 43.0° to 123.0° Bearing [Mag]: 42.0° to 122.0°				Arc Distance: Out to 102.0 NM Altitude: 6000.0 to 18000.0 ft		
2	LBV FAA 755486-29 LBV [IFPA]	N26° 49' 41.466", W081° 23' 29.178"	1.0 E	40	30	110.4	LBV FAA 755486-29	
ESV:		Bearing [True]: 45.0° to 85.0° Bearing [Mag]: 44.0° to 84.0°				Arc Distance: Out to 85.0 NM Altitude: 6000.0 to 18000.0 ft		

DME DME Assessment Results for AARPS1 path KMIA:RW27:DER_KROCS

DME Error

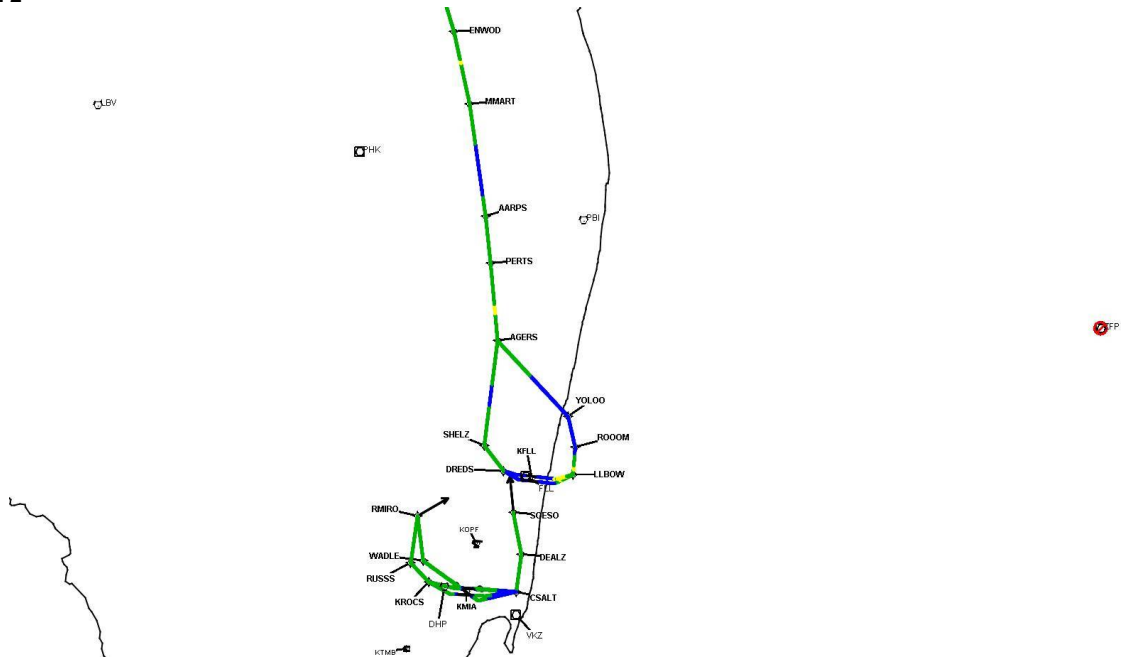


Graphic Depiction 1



DME DME Assessment Results for AARPS1 path KMIA:RW27:DER_KROCS

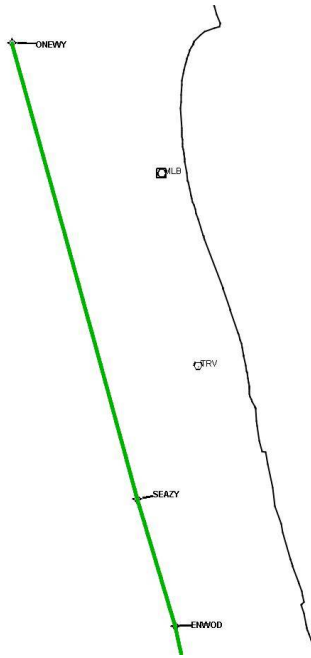
Graphic Depiction 2



DME DME Assessment Results for AARPS1 path KMIA:RW27:DER_KROCS

Graphic Depiction 3

QUAL



DME DME Assessment Results for AARPS1 path KMIA:RW30:DER_RMIRO

Results Summary

Flyability:	Completed
DME/DME:	Completed - No Critical DMEs
Name:	Miles CTR Carpenter
Project File:	C:\Users\Miles CTR Carpenter\Desktop\KFLI SIDs DME\KFLI AARPS SID DME\KFLI AARPS1 SID DME_03.18.2021.tgs
Output File:	C:\Users\Miles CTR Carpenter\Desktop\KFLI SIDs DME\KFLI AARPS SID DME\KFLI [IFPA] AARPS1 20210318_1132 EDT\KMIA-RW30-DER_RMIRO\KFLI AARPS1 SID KMIA RW30 RMIRO 20210318_1132 EDT.pdf
Procedure Name:	AARPS1
Software: DmeDmePlugin:	6.2.0
Date/Time:	03/18/2021 11:32 EDT
Databases:	DTED 0max

Failures

No Failures

Warnings

No Warnings

Notes For Flight Check

None

Flight Plan

Name	Type	Lat/Lon	Altitude (ft)	VNAV Mode	Ground Speed (kts)	Turn Type	Leg Type
KMIA:RW30:DER	WP	N25° 47' 57.426", W080° 18' 08.244"	9.1	VNAV	130	FLY_OVER	TF
WADLE	WP	N25° 51' 19.271", W080° 24' 47.659"	1800	VNAV	200	FLY_BY	TF
RMIRO	WP	N25° 57' 28.324", W080° 26' 25.018"	5000	VNAV	200	FLY_BY	TF
Climb Gradient: 500.0 ft/NM up to 520.0 ft MSL 200.0 ft/NM							

Flyability

Flight Type:	SID
Selected Airport:	KFLI [IFPA]
Climb Gradient:	500.0 ft/NM up to 520.0 ft MSL 200.0 ft/NM
Speeds:	130 at the Runway DER
	145 at the end of the VA or VI leg
	200 Ground Speed to 11000 FT
	240 Ground Speed to 18000 FT
	260 Ground Speed to 24000 FT
	340 Ground Speed above 24000 FT
Descent During a Turn:	Allowed
VNAV Mode:	Flight Plan

DME DME Assessment Results for AARPS1 path KMIA:RW30:DER_RMIRO

DME/DME	
RNP:	RNP 2
Flight Mode:	Manual
Line of Sight (DTED Level 0 Max):	Evaluated
Inertial Drift:	Enabled
Initial Drift:	0.558 NM
INS Drift Rate:	8.0 NM/Hour
Range Mode:	OSV
RNP Edges:	Evaluated
Min DME Range:	3.0 NM
DME Types:	DME, VOR-DME, VORTAC
DME Include Angles:	30 to 150
Critical DMEs:	Not Allowed
DoD Facilities:	Not included
Foreign Facilities:	Included
High DMEs:	Included
Low DMEs:	Included
Terminal DMEs:	Included
Flight Check DMEs:	Not selected
Higher Altitudes:	Not Evaluated
Near Maximum Altitude:	Not Evaluated
Automatic ESVs:	Not enabled
Disabled DMEs:	ZFP,ZQA,ZTC

DME/DME (Continued)										
DMEs Used										
#	Name	Lat/Lon	MAGVAR	Range	Type	Source	Critical	Status	Time	Distance
1	VKZ	N25° 45' 06.846", W080° 09' 15.996"	4.0 W	130	H	IFPA	NO	Enabled	95.4 %	96.5 %
2	FLL	N26° 04' 26.183", W080° 09' 59.192"	6.0 W	130	H	IFPA	NO	Enabled	95.4 %	96.5 %
3	DHP	N25° 47' 59.866", W080° 20' 56.526"	4.0 W	130	H	IFPA	NO	Enabled	54.8 %	62.2 %
4	ZFP	N26° 33' 19.250", W078° 41' 52.250"	3.0 W	130	H	IFPA	NO	Disabled		
5	ZQA	N25° 01' 31.860", W077° 26' 47.140"	6.0 W	130	H	IFPA	NO	Disabled		
6	ZTC	N26° 44' 05.000", W077° 22' 45.000"	5.0 W	130	H	IFPA	NO	Disabled		

Flight Check DME Selection						
Distance [NM]	Selected DMEs					Alternate
0.0						
0.5	VKZ	FLL				
5.0	FLL	DHP	VKZ			

Inertial Drift Segments			
#	Start Location	End Location	Length [NM]
1	N25° 47' 58.469", W080° 18' 10.283"	N25° 48' 10.983", W080° 18' 34.759"	0.4228

Available DMEs by Waypoints		
Waypoint Before	Waypoint After	DME List
KMIA:RW30:DER	WADLE	VKZ, FLL, DHP
WADLE	RMIRO	VKZ, FLL, DHP

DME DME Assessment Results for AARPS1 path KMIA:RW30:DER_RMIRO

User Data Files

File Name

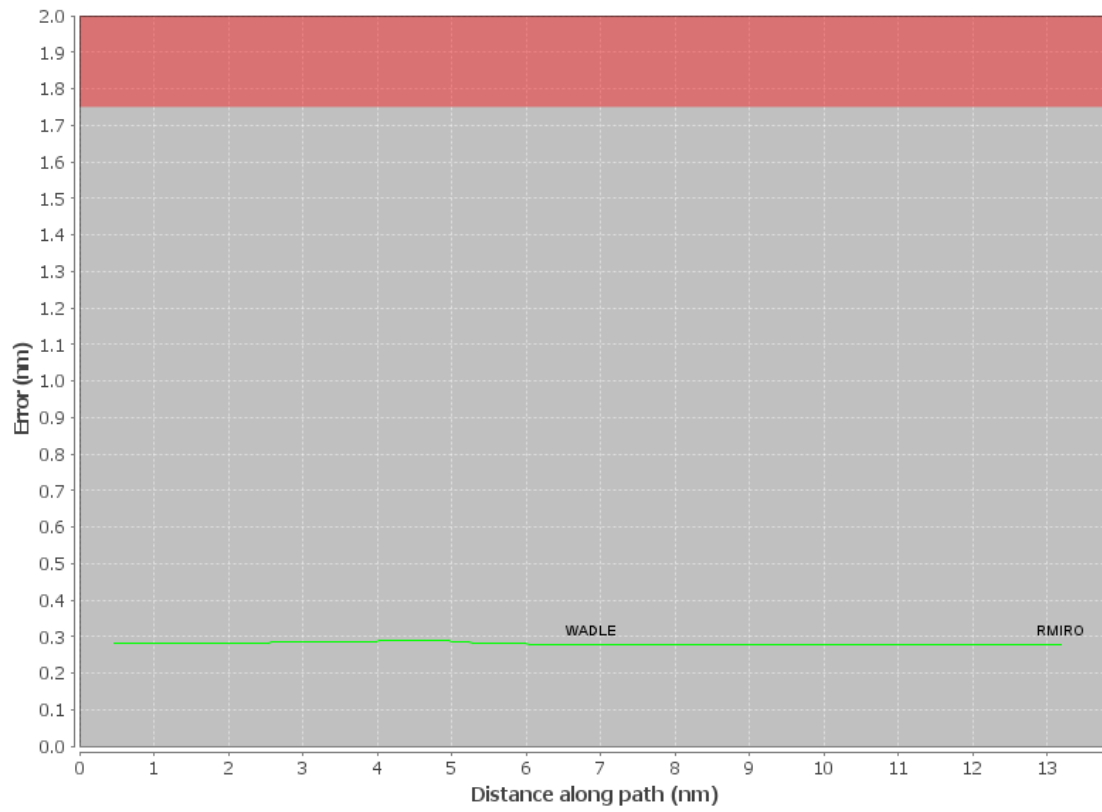
None

User DMEs

#	Name	Lat/Lon	MAGVAR	Range	Elevation [ft]	Frequency	Replaces	Status
1	LAL FAA 704224-40 LAL [IFPA]	N27° 59' 10.310", W082° 00' 50.056"	1.0 E	130	133.8	116.0	LAL FAA 704224-40	
ESV:		Bearing [True]: 43.0° to 123.0° Bearing [Mag]: 42.0° to 122.0°				Arc Distance: Out to 102.0 NM Altitude: 6000.0 to 18000.0 ft		
2	LBV FAA 755486-29 LBV [IFPA]	N26° 49' 41.466", W081° 23' 29.178"	1.0 E	40	30	110.4	LBV FAA 755486-29	
ESV:		Bearing [True]: 45.0° to 85.0° Bearing [Mag]: 44.0° to 84.0°				Arc Distance: Out to 85.0 NM Altitude: 6000.0 to 18000.0 ft		

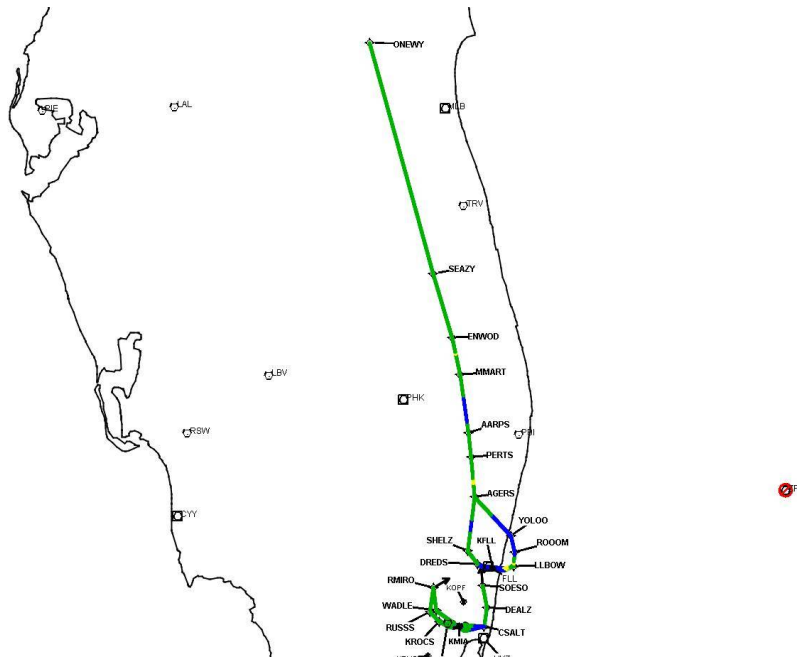
DME DME Assessment Results for AARPS1 path KMIA:RW30:DER_RMIRO

DME Error



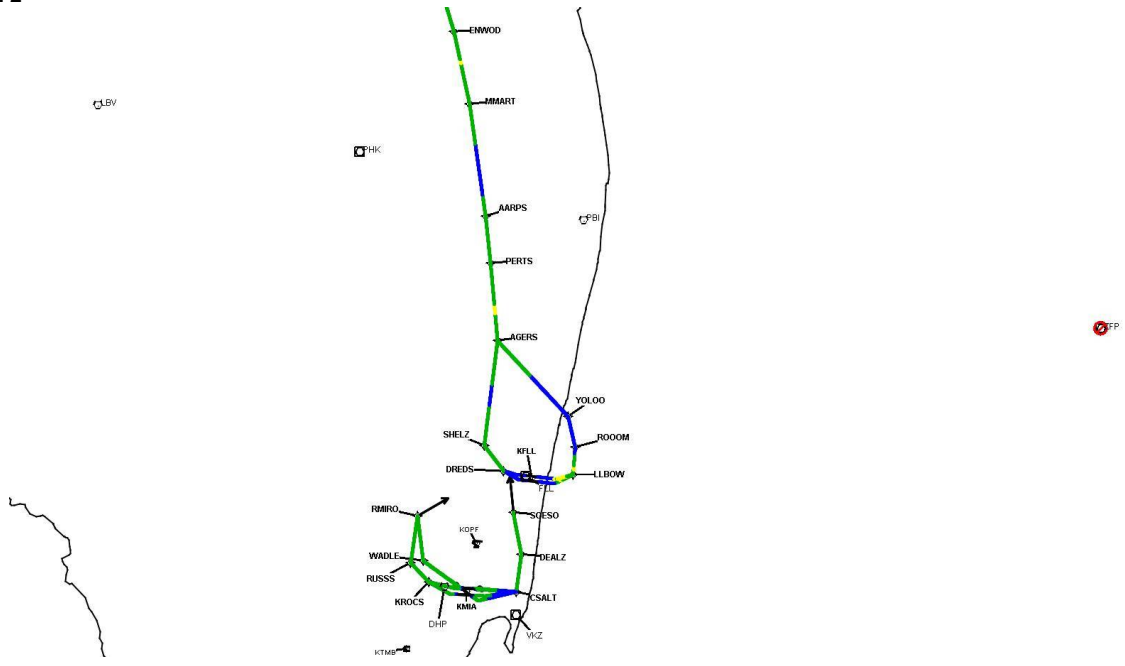
DME DME Assessment Results for AARPS1 path KMIA:RW30:DER_RMIRO

Graphic Depiction 1



DME DME Assessment Results for AARPS1 path KMIA:RW30:DER_RMIRO

Graphic Depiction 2



DME DME Assessment Results for AARPS1 path KMIA:RW30:DER_RMIRO

Graphic Depiction 3

QUAL

