



Flight Procedures Cover Page	Task Action: FLIGHT CHECK	Task Type: IAP	Estimated Chart Date: 05/16/2024	APWS Task ID: 95A31693489549EFA3DA2088C29B7C7C	APWS Project ID: 869C477D4A924B51B6CFF04DDE150ABA
Procedure: ILS OR LOC RWY 17 AMDT 4		Enroute: NO	Specialist: Zeder, Joseph		Agreement Number:
Airport ID: KMHT			Airport City: MANCHESTER		State: NH
Facility ID: I-MNA	Facility Type: ILS	Flight Inspection Remark Type: New FC Slot			
<div>Procedure Comments:</div> <div>REMOVED MHT VOR/DME FROM PROCEDURE</div> <div>POC: CASIMIR TABAKA PH 405-954-7931</div> <div><div>QUALITY 38 CHECKED</div><div>QUALITY 10 CHECKED</div></div>					

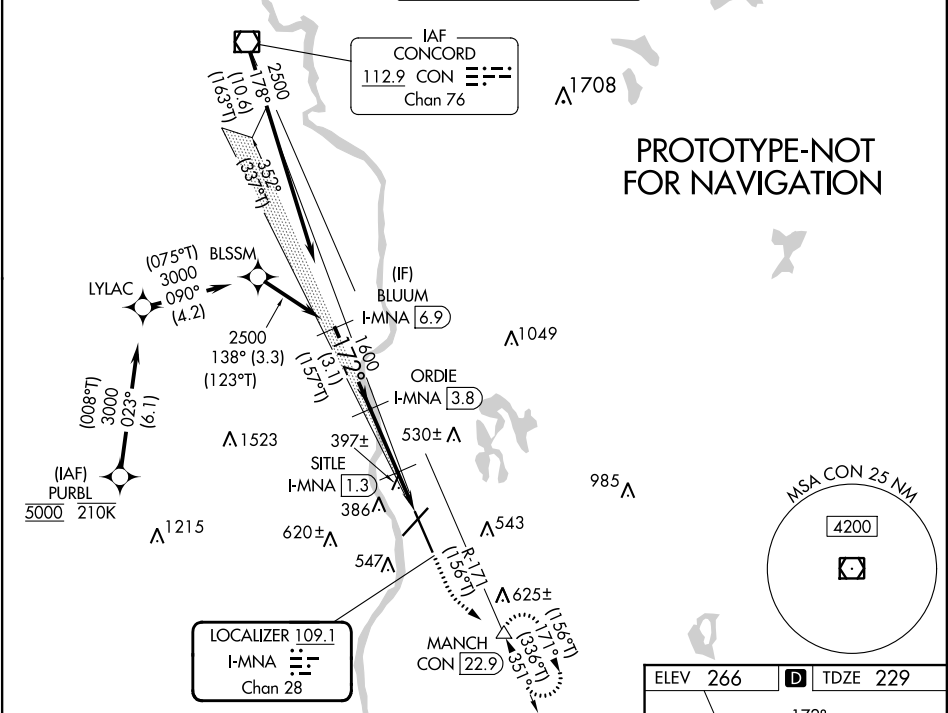
<b>FIPC BASIC FORM</b>							
<b>PROCEDURE:</b> ILS OR LOC RWY 17 AMDT 4			<b>AIRPORT NAME:</b> MANCHESTER BOSTON RGNL		<b>AIRPORT ID:</b> KMHT	<b>SPECIAL CONTROL NO:</b> YP-01-245-24	
<b>FAC ID:</b> MNA		<b>CITY:</b> MANCHESTER			<b>ST:</b> NH	<b>ORIG CHART DATE:</b> 05/16/2024	
<b>DFL TYPE:</b> PROC/AR	<b>THIRD PARTY:</b> <input type="checkbox"/> YES	<b>EST. TIME ON SITE:</b> 0.5	<b>REIMB. NUMBER:</b> AC0721		<b>PTS TASK ID:</b> 95A31693489549EFA3DA2088C29B7C7C		
<b>PREFLIGHT NOTES</b>							
<b>REVIEWER:</b>					<b>DATE:</b>		
<b>COMMENTS:</b>					<b>CHECK ONE:</b>		
					<input type="checkbox"/> FLT CK REQ <input type="checkbox"/> NFCR <input type="checkbox"/> REJECT		
							<b>YES</b>
					<b>CPV COMPLETE?</b>		<b>X</b>
<b>PROCEDURE RESULTS</b>							
<b>INSPECTION DATE:</b> 02/22/2024		<b>CREW #:</b> VN137	<b>N #:</b> N70	<b>INSTRUMENT PROCEDURE STATUS:</b> <input checked="" type="checkbox"/> SAT <input type="checkbox"/> SAT W/CHANGES <input type="checkbox"/> UNSAT		<b>ARINC CODING:</b> <input type="checkbox"/> SAT <input type="checkbox"/> SAT/GOLD <input type="checkbox"/> UNSAT	
<b>FLIGHT INSPECTOR SIGNATURE:</b> bob s pressler @ 02/22/2024 17:32			<b>PRINTED NAME:</b> PRESSLER, ROBERT STEPHEN				<b>NOTAM INITIATED?</b> <input type="checkbox"/> YES <input checked="" type="checkbox"/> NO
<b>FLIGHT INSPECTOR REMARKS:</b> SAT							
<b>IN-FLIGHT OBSTACLE REPORT</b>							
<b>OBSTRUCTION ID #:</b>	<b>COORDINATES OR LOCATION:</b>		<b>GNSS ALTITUDE (MSL):</b>		<b>BAROMETRIC ALTITUDE (MSL):</b>		<b>HEIGHT ABOVE GROUND LEVEL:</b>

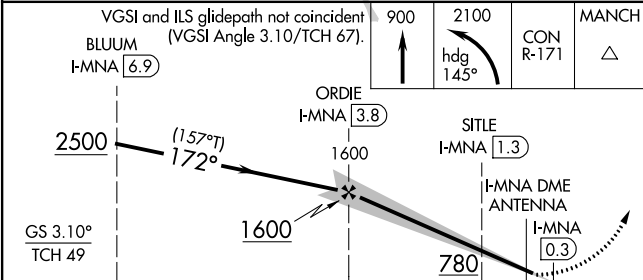
LOC/DME I-MNA	APP CRS	Rwy Idg	8914
109.1	172°	TDZE	229
Chan 28		Apt Elev	266

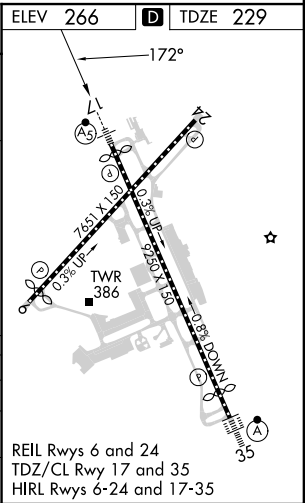
ILS or LOC RWY 17  
MANCHESTER BOSTON RGNL (MHT)

DME required. From PURBL: RNP APCH-GPS.	MALSR 	MISSED APPROACH: Climb to 900 then climbing left turn o 2100 on heading 145° and on CON VOR/DME R-171 to MANCH/CON 22.9 DME and hold, continue climb-in-hold to 2100.
		

ATIS 119.55	BOSTON APP CON 124.9 269.075	MANCHESTER TOWER 121.3 239.025	GND CON 121.9	CLNC DEL 135.9
----------------	---------------------------------	-----------------------------------	------------------	-------------------



VGSI and ILS glidepath not coincident (VGSI Angle 3.10/TCH 67).				
				
CATEGORY	A	B	C	D
S-ILS 17	429/18		200 (200-½)	
S-LOC 17	660/24	431 (400-½)	660/40	431 (400-¾)
CIRCLING	880-1	614 (700-1)	980-2 714 (800-2)	1100-2¾ 834 (900-2¾)



OLD

MANCHESTER, NEW HAMPSHIRE

AL-246 (FAA)

23278

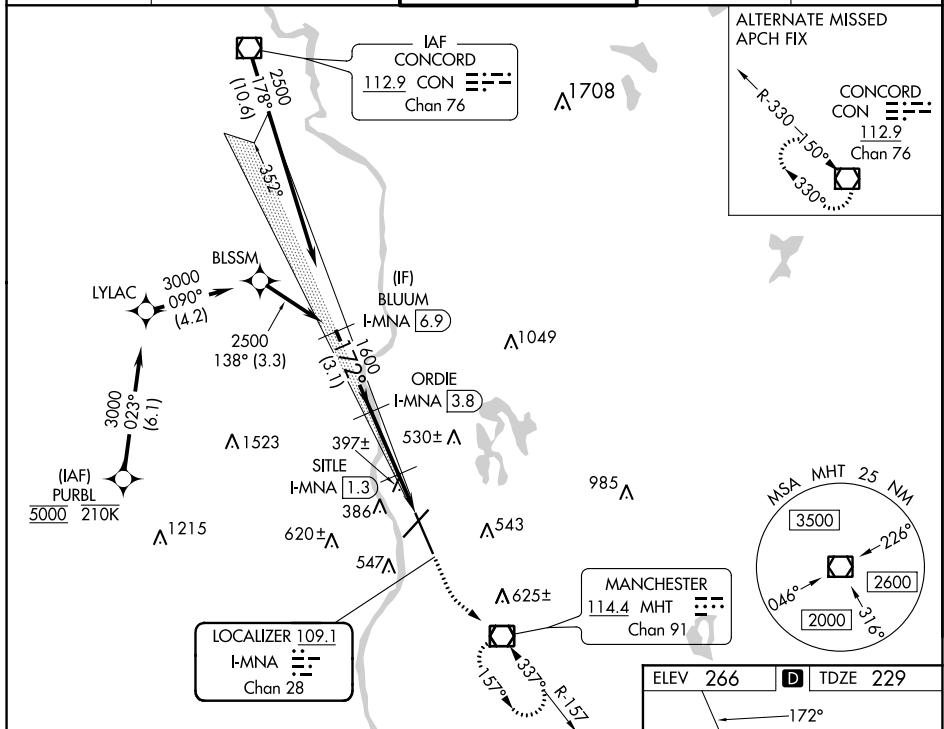
LOC/DME I-MNA	APP CRS	Rwy ldg
<b>109.1</b>	<b>172°</b>	<b>8914</b>
Chan 28		TDZE
		<b>229</b>
		Apt Elev
		<b>266</b>

# ILS or LOC RWY 17

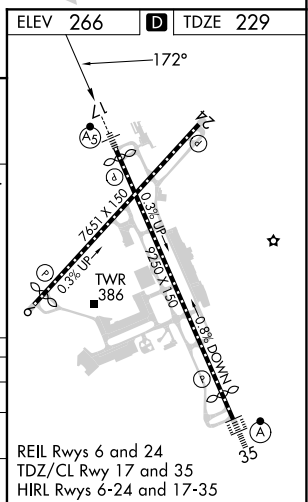
MANCHESTER BOSTON RGNL (MHT)

DME required. From PURBL: RNAV 1-GPS required.	MALSR 	MISSED APPROACH: Climb to 800 then climbing left turn to 2000 direct MHT VOR/DME and hold.
---	-----------	--

ATIS <b>119.55</b>	BOSTON APP CON <b>124.9 269.075</b>	MANCHESTER TOWER <b>121.3 239.025</b>	GND CON <b>121.9</b>	CLNC DEL <b>135.9</b>
-----------------------	--	--	-------------------------	--------------------------



BLUUM I-MNA 6.9	ORDIE I-MNA 3.8	SITLE I-MNA 1.3	I-MNA DME ANTENNA	I-MNA 0.3
2500	1600	800		
172°				
GS 3.10° TCH 49				
3.1 NM	2.5 NM	1.6 NM		
CATEGORY	A	B	C	D
S-ILS 17	429/18	200 (200-½)		
S-LOC 17	660/24	431 (400-½)	660/40	431 (400-¾)
CIRCLING	880-1	614 (700-1)	980-2	1100-2¾
			714 (800-2)	834 (900-2¾)



MANCHESTER, NEW HAMPSHIRE  
Amdt 3A 28FEB19

42°56'N-71°26'W

# MANCHESTER BOSTON RGNL (MHT)

ILS or LOC RWY 17

NE-1, 05 OCT 2023 to 02 NOV 2023



MANCHESTER BOSTON RGNL KMHT  
ILS OR LOC RWY 17  
1:500K

Initial LYLAC to BLSSM TERRAIN+AAO (1073)  
TP52

CON:VOR/DME to BLUUM TERRAIN+AAO (1119)  
TP1458351

Initial BLSSM to BLUUM TERRAIN+AAO (1090)  
TP102

Intermediate BLUUM to ORDIE TERRAIN+AAO (893)  
TP141 (RNAV)

LOC:ORDIE to SITLE BUILDING (509)  
33-000055

LOC:SITLE to KMHT:RWY17:AER TREE (397)  
33-028534

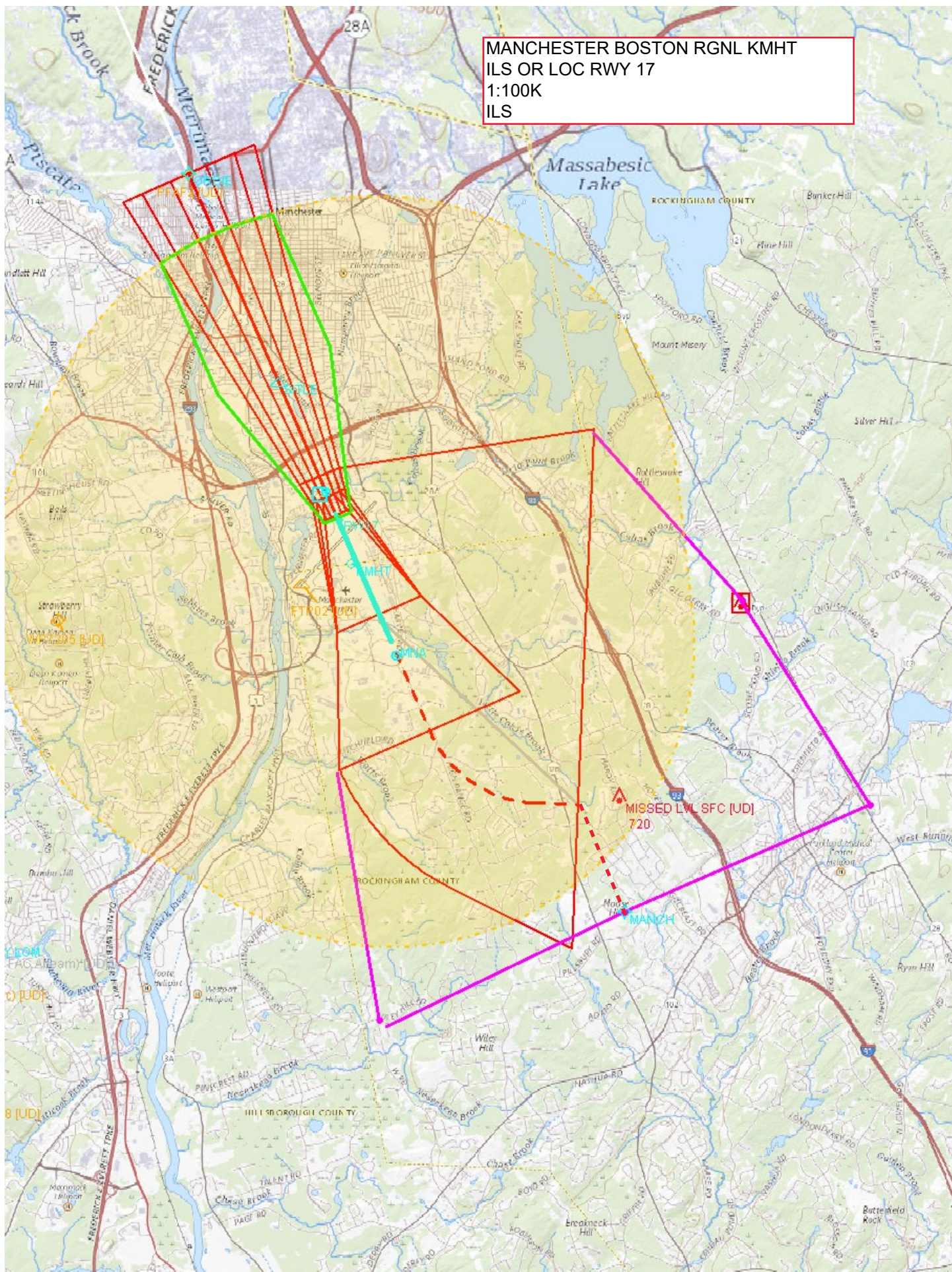
Missed Level Surface TERRAIN+AAO (689)  
TP1552749

Initial PURBL to LYLAC TERRAIN+AAO (1477)  
TP0

MANCH PRIMARY TOWER (869)  
33-023160



MANCHESTER BOSTON RGNL KMHT  
ILS OR LOC RWY 17  
1:100K  
ILS

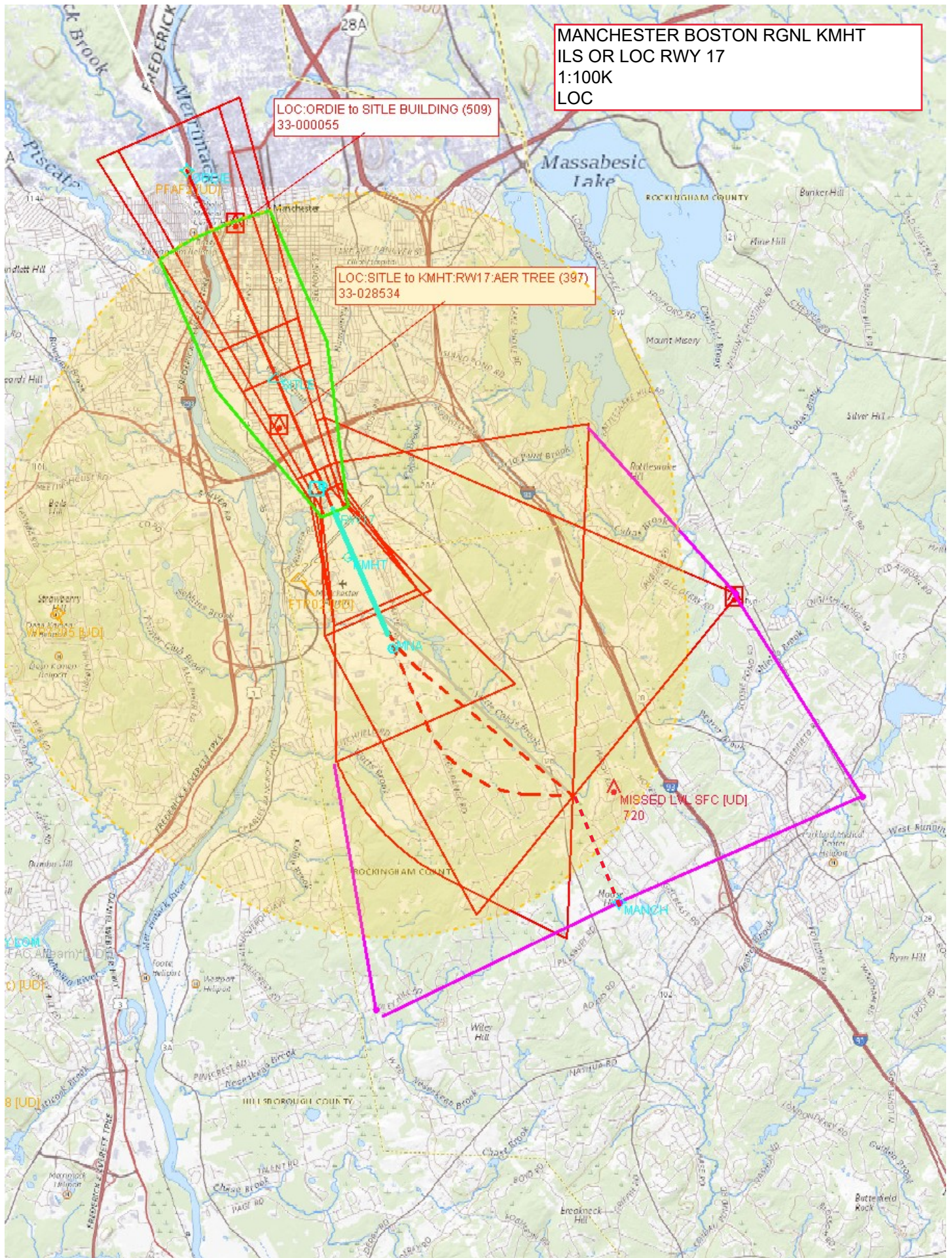




MANCHESTER BOSTON RGNL KMHT  
ILS OR LOC RWY 17  
1:100K  
LOC

LOC:ORDIE to SITLE BUILDING (509)  
33-000055

LOC:SITLE to KMHT:RW17:AER TREE (397)  
33-028534





MANCHESTER BOSTON RGNL KMHT  
ILS OR LOC RWY 17  
1:100K  
CIRC

