
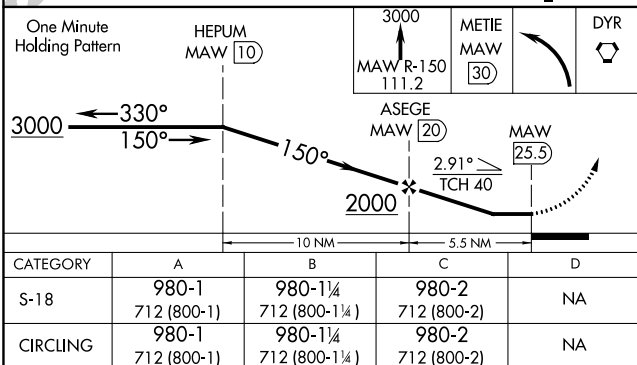
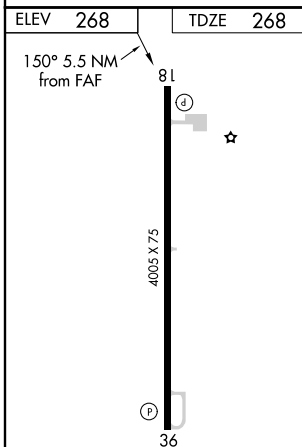
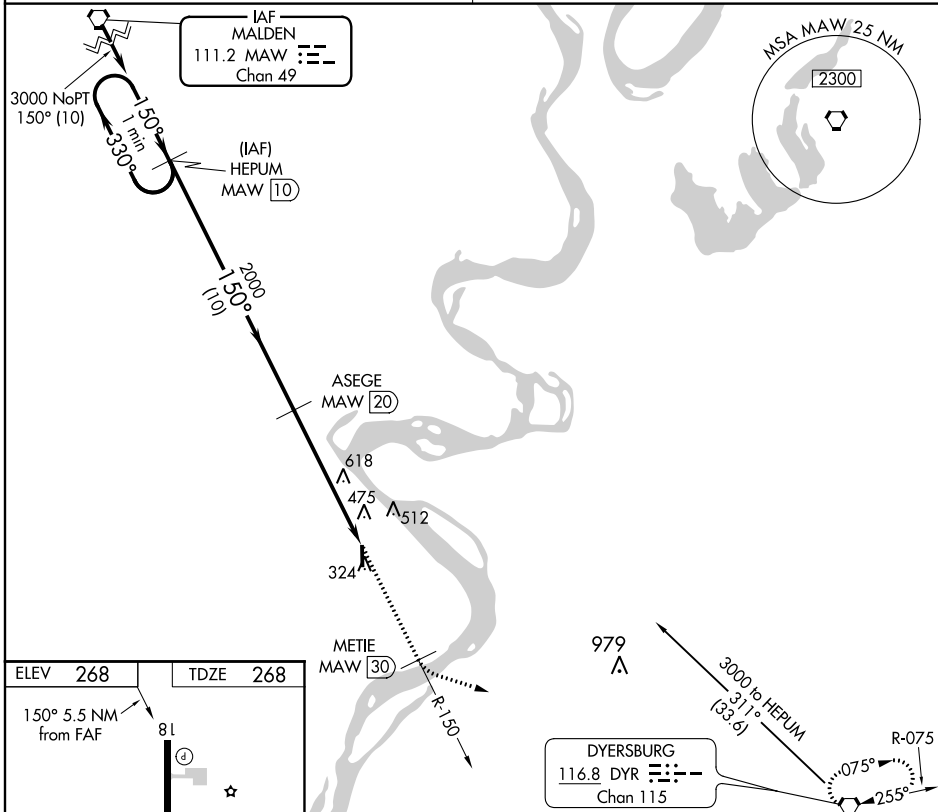


|   |                         |                                |                                     |   |  |
|---|-------------------------|--------------------------------|-------------------------------------|---|--|
| Flight Procedures Cover Page  | Task Action:<br>P-NOTAM | Task Type:<br>IAP              | Estimated Chart Date:<br>07/15/2021 | APWS Task ID:<br>950EDE6B9DF941169F84D2B976144188 | APWS Project ID:<br>796CEC03EBAD4E819022F3BF29D85E4D |
| Procedure:<br>VOR/DME RWY 18 AMDT 0B  |                         | Enroute:<br>NO                 | Specialist:<br>Lafferty, James      |   | Agreement Number:                                    |
| Airport ID:<br>M05  |                         |                                | Airport City:<br>CARUTHERSVILLE     |   | State:<br>MO   |
| Facility ID:  | Facility Type:          | Flight Inspection Remark Type: |                                     |   |  |
| <div> <div>Procedure Comments:</div> <div> P-NOTAM<br/><br/> This Cancels FDC 0/8062<br/><br/> Order 8260.3, chapter 2, New Circling Criteria Applied<br/><br/> Contact Dave Teffeteller at 202-267-5177 </div> <div>  </div> </div> |                         |                                |                                     |   |  |

15204

VOR/DME RWY 18  
CARUTHERSVILLE MEMORIAL (M05)

**MISSED APPROACH:** Climb to 3000 via MAW VORTAC R-150 to METIE/MAW 30 DME, then left turn direct DYR VORTAC and hold.

CTAF  
122.9 **L**

CARUTHERSVILLE MEMORIAL (M05)  
VOR/DME RWY 18

36°10'N-89°41'W

NC-3, 23 JUL 2015 to 20 AUG 2015

