

Flight Procedures Cover Page	Task Action: P-NOTAM	Task Type: IAP	Estimated Chart Date: 06/17/2021	APWS Task ID: 94E30BEBAA00147598F1E15AA1AB361BC	APWS Project ID: 5DD87E8E506148139262412DCE667D8B
Procedure: RNAV GPS RWY 15 ORIG-A		Enroute: NO	Specialist: Donkor, Kweku		Agreement Number:
Airport ID: KEYF			Airport City: ELIZABETH TOWN		State: NC
Facility ID:	Facility Type:	Flight Inspection Remark Type:			
<p>Procedure Comments: P-NOTAM.</p> <p>THIS CANCELS FDC 0/6589.</p> <p>ORDER 8260.3, CHAPTER 2, NEW CIRCLING CRITERIA APPLIED.</p> <p>CONTACT: LONNIE EVERHART 405-954-4576/DAVID TEFFETELLER 202-267-5177.</p>					



OLD

ELIZABETHTOWN, NORTH CAROLINA

AL-6982 (FAA)

19283

WAAS CH 82419 W15A	APP CRS 152°	Rwy Idg TDZE Apt Elev	5006 132 132
--	------------------------	-----------------------------	---

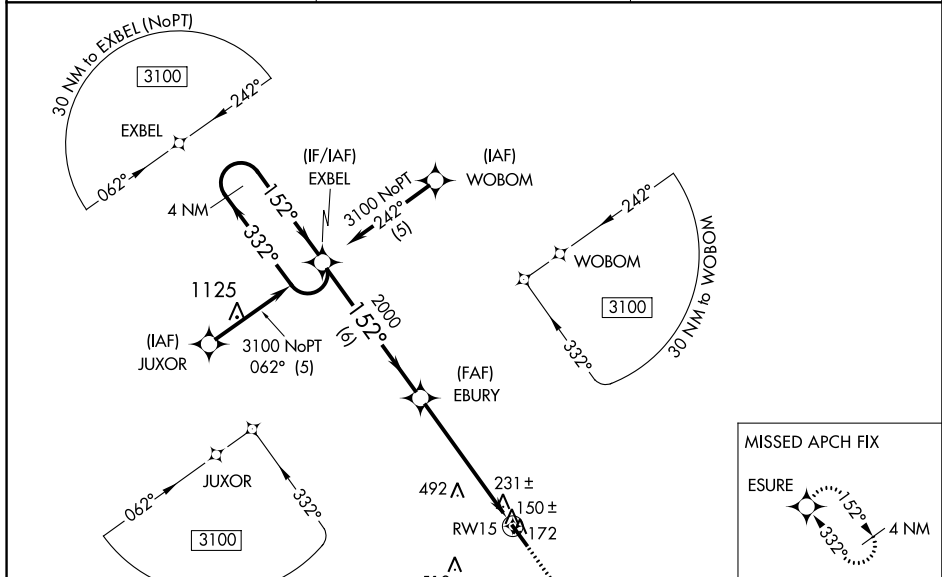
RNAV (GPS) RWY 15

CURTIS L BROWN JR FIELD (EYF)

⚠ DME/DME RNP-0.3 NA. Visibility reduction by helicopters NA. When local altimeter setting not received, use Fayetteville, NC altimeter setting and increase all DA 72 feet and LPV and LNAV/VNAV all Cats visibility ¼ mile; increase all MDA 80 feet and increase LNAV visibility Cats C and D ¼ mile and increase Circling visibility Cat C ¼ mile and Cat D ½ mile. Baro-VNAV and VDP NA when using Fayetteville, NC altimeter setting. For uncompensated Baro-VNAV systems, LNAV/VNAV NA below -15°C (5°F) or above 48°C (118°F).

MISSED APPROACH: Climb to 3100 direct ESURE and hold, continue climb-in-hold to 3100.

AWOS-3P 119.475	FAYETTEVILLE APP CON 133.0 290.25	UNICOM 122.8 (CTAF) 0
---------------------------	---	---------------------------------



4 NM Holding Pattern		VGSI and RNAV glidepath not coincident (VGSI Angle 3.00/TCH 32).		3100	ESURE
3100 ← 332°		152° →		152°	
GP 3.00° TCH 45		2000		*1.1 NM to RWY 15	*LNAV only.
6 NM		4.6 NM		1.1 NM	
CATEGORY	A	B	C	D	
LPV DA	382-1		250 (300-1)		
LNAV/VNAV DA	529-1½		397 (400-1½)		
LNAV MDA	660-1	528 (600-1)	660-1½ 528 (600-1½)	660-1¾ 528 (600-1¾)	
CIRCLING	660-1	528 (600-1)	660-1½ 528 (600-1½)	800-2 668 (700-2)	

REIL Rwy 15 and 33 0
MIRL Rwy 15-33 0

ELIZABETHTOWN, NORTH CAROLINA

Orig 23SEP10

34°36'N-78°35'W

RNAV (GPS) RWY 15

SE-2, 28 JAN 2021 to 25 FEB 2021

