


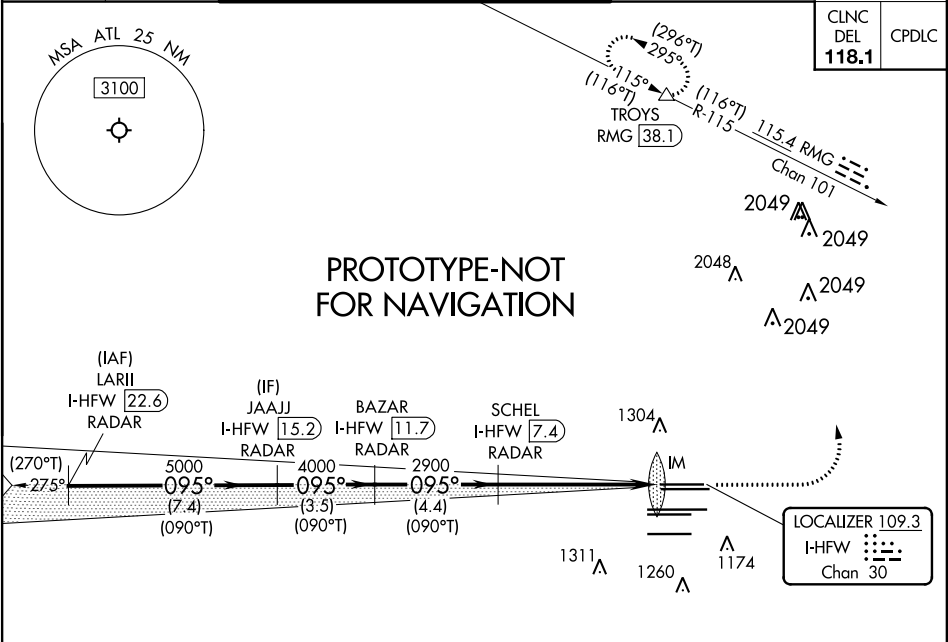
Flight Procedures Cover Page	Task Action: FLIGHT CHECK	Task Type: IAP	Estimated Chart Date: 04/22/2021	APWS Task ID: 94A5DA72D5B04797948AEAE5709C0637	APWS Project ID: A802207258D94829873477C6CEAA3ADF
Procedure: ILS OR LOC RWY 8L AMDT 6		Enroute: NO	Specialist: Snider, Heidi		Agreement Number:
Airport ID: KATL			Airport City: ATLANTA		State: GA
Facility ID: HFW	Facility Type: ILS	Flight Inspection Remark Type: New FC Slot			
<div>Procedure Comments: ACTIVE DATA USED ATL AND PDK VORMON DECOMM FT LOM DECOM  CONTACT JOHN BORDY 405-954-0980</div> <div>SN 1/14/21 6</div> <div>QUALITY CHECKED</div> <div>QUALITY 26 CHECKED</div>					

[illegible]

LOC/DME	I-HFW	APP CRS	Rwy Idg	8L	8R
<b>109.3</b>		<b>095°</b>	TDZE	<b>8800</b>	<b>9999</b>
Chan <b>30</b>			Apt Elev	<b>1015</b>	<b>1024</b>
				<b>1026</b>	<b>1026</b>

ILS or LOC RWY 8L  
HARTSFIELD-JACKSON ATLANTA INTL (ATL)

RADAR required for procedure entry. DME or RADAR required.				Rwy 8L ALSIF-2		MISSED APPROACH: Climb to 1500 then climbing left turn to 3500 on heading 360° and RMG VORTAC R-115 to TROYS/RMG 38.1 DME/RADAR and hold.			
Simultaneous approach authorized. Inop table does not apply to sidestep 8R.									
D-ATIS		ATLANTA		ATLANTA TOWER				GND CON	
ARR 119.65		APP CON		8L-26R	8R-26L	9L-27R	9R-27L	10-28	ALL RWYS
DEP 125.55		127.9 379.9		119.1	125.325	123.85	119.3	119.5	254.4



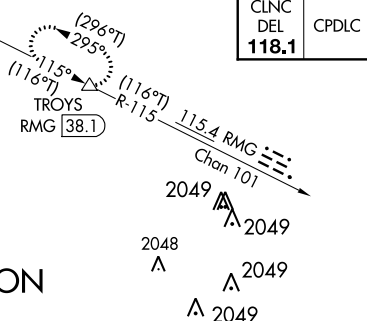
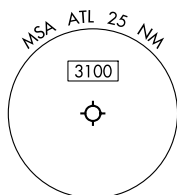
ELEV 1026		D		TDZE 8L 1015	
				TDZE 8R 1024	
VGSi and ILS glidepath not coincident (VGSi Angle 3.00/TCH 70).					
1500		3500		RMG TROYS	
hdg 360°					
095° 5.8 NM from FAF					
0.6% DOWN → X 150					
0.3% DOWN → X 150					
0.5% DOWN → X 150					
0.4% DOWN → X 150					
0.5% UP → X 150					
0.4% DOWN → X 150					
0.5% DOWN → X 150					
0.4% DOWN → X 150					
0.5% DOWN → X 150					
0.4% DOWN → X 150					
0.5% DOWN → X 150					
0.4% DOWN → X 150					
0.5% DOWN → X 150					
0.4% DOWN → X 150					
0.5% DOWN → X 150					
0.4% DOWN → X 150					
0.5% DOWN → X 150					
0.4% DOWN → X 150					
0.5% DOWN → X 150					
0.4% DOWN → X 150					
0.5% DOWN → X 150					
0.4% DOWN → X 150					
0.5% DOWN → X 150					
0.4% DOWN → X 150					
0.5% DOWN → X 150					
0.4% DOWN → X 150					
0.5% DOWN → X 150					
0.4% DOWN → X 150					
0.5% DOWN → X 150					
0.4% DOWN → X 150					
0.5% DOWN → X 150					
0.4% DOWN → X 150					
0.5% DOWN → X 150					
0.4% DOWN → X 150					
0.5% DOWN → X 150					
0.4% DOWN → X 150					
0.5% DOWN → X 150					
0.4% DOWN → X 150					
0.5% DOWN → X 150					
0.4% DOWN → X 150					
0.5% DOWN → X 150					
0.4% DOWN → X 150					
0.5% DOWN → X 150					
0.4% DOWN → X 150					
0.5% DOWN → X 150					
0.4% DOWN → X 150					
0.5% DOWN → X 150					
0.4% DOWN → X 150					
0.5% DOWN → X 150					
0.4% DOWN → X 150					
0.5% DOWN → X 150					
0.4% DOWN → X 150					
0.5% DOWN → X 150					
0.4% DOWN → X 150					
0.5% DOWN → X 150					
0.4% DOWN → X 150					
0.5% DOWN → X 150					
0.4% DOWN → X 150					
0.5% DOWN → X 150					
0.4% DOWN → X 150					
0.5% DOWN → X 150					
0.4% DOWN → X 150					
0.5% DOWN → X 150					
0.4% DOWN → X 150					
0.5% DOWN → X 150					
0.4% DOWN → X 150					
0.5% DOWN → X 150					
0.4% DOWN → X 150					
0.5% DOWN → X 150					
0.4% DOWN → X 150					
0.5% DOWN → X 150					
0.4% DOWN → X 150					
0.5% DOWN → X 150					
0.4% DOWN → X 150					
0.5% DOWN → X 150					
0.4% DOWN → X 150					
0.5% DOWN → X 150					
0.4% DOWN → X 150					
0.5% DOWN → X 150					
0.4% DOWN → X 150					
0.5% DOWN → X 150					
0.4% DOWN → X 150					
0.5% DOWN → X 150					
0.4% DOWN → X 150					
0.5% DOWN → X 150					
0.4% DOWN → X 150					
0.5% DOWN → X 150					
0.4% DOWN → X 150					
0.5% DOWN → X 150					
0.4% DOWN → X 150					
0.5% DOWN → X 150					
0.4% DOWN → X 150					
0.5% DOWN → X 150					
0.4% DOWN → X 150					
0.5% DOWN → X 150					
0.4% DOWN → X 150					
0.5% DOWN → X 150					
0.4% DOWN → X 150					
0.5% DOWN → X 150					
0.4% DOWN → X 150					
0.5% DOWN → X 150					
0.4% DOWN → X 150					
0.5% DOWN → X 150					
0.4% DOWN → X 150					
0.5% DOWN → X 150					
0.4% DOWN → X 150					
0.5% DOWN → X 150					
0.4% DOWN → X 150					
0.5% DOWN → X 150					
0.4% DOWN → X 150					
0.5% DOWN → X 150					
0.4% DOWN → X 150					
0.5% DOWN → X 150					
0.4% DOWN → X 150					
0.5% DOWN → X 150					
0.4% DOWN → X 150					
0.5% DOWN → X 150					
0.4% DOWN → X 150					
0.5% DOWN → X 150					
0.4% DOWN → X 150					
0.5% DOWN → X 150					
0.4% DOWN → X 150					
0.5% DOWN → X 150					
0.4% DOWN → X 150					
0.5% DOWN → X 150					
0.4% DOWN → X 150					
0.5% DOWN → X 150					
0.4% DOWN → X 150					
0.5% DOWN → X 150					
0.4% DOWN → X 150					
0.5% DOWN → X 150					
0.4% DOWN → X 150					
0.5% DOWN → X 150					
0.4% DOWN → X 150					
0.5% DOWN → X 150					
0.4% DOWN → X 150					
0.5% DOWN → X 150					
0.4% DOWN → X 150					
0.5% DOWN → X 150					
0.4% DOWN → X 150					
0.5% DOWN → X 150					
0.4% DOWN → X 150					
0.5% DOWN → X 150					
0.4% DOWN → X 150					
0.5% DOWN → X 150					
0.4% DOWN → X 150					
0.5% DOWN → X 150					
0.4% DOWN → X 150					
0.5% DOWN → X 150					
0.4% DOWN → X 150					
0.5% DOWN → X 150					
0.4% DOWN → X 150					
0.5% DOWN → X 150					
0.4% DOWN → X 150					
0.5% DOWN → X 150					
0.4% DOWN → X 150					
0.5% DOWN → X 150					
0.4% DOWN → X 150					
0.5% DOWN → X 150					
0.4% DOWN → X 150					
0.5% DOWN → X 150					
0.4% DOWN → X 150					
0.5% DOWN → X 150					
0.4% DOWN → X 150					
0.5% DOWN → X 150					
0.4% DOWN → X 150					
0.5% DOWN → X 150					
0.4% DOWN → X 150					
0.5% DOWN → X 150					
0.4% DOWN → X 150					
0.5% DOWN → X 150					
0.4% DOWN → X 150					
0.5% DOWN → X 150					
0.4% DOWN → X 150					
0.5% DOWN → X 150					
0.4% DOWN → X 150					
0.5% DOWN → X 150					
0.4% DOWN → X 150					
0.5% DOWN → X 150					
0.4% DOWN → X 150					
0.5% DOWN → X 150					
0.4% DOWN → X 150					
0.5% DOWN → X 150					
0.4% DOWN → X 150					
0.5% DOWN → X 150					
0.4% DOWN → X 150					
0.5% DOWN → X 150					
0.4% DOWN → X 150					
0.5% DOWN → X 150					
0.4% DOWN → X 150					
0.5% DOWN → X 150					
0.4% DOWN → X 150					
0.5% DOWN → X 150					
0.4% DOWN → X 150					
0.5% DOWN → X 150					
0.4% DOWN → X 150					
0.5% DOWN → X 150					
0.4% DOWN → X 150					
0.5% DOWN → X 150					
0.4% DOWN → X 150					
0.5% DOWN → X 150					
0.4% DOWN → X 150					
0.5% DOWN → X 150					
0.4% DOWN → X 150					
0.5% DOWN → X 150					
0.4% DOWN → X 150					
0.5% DOWN → X 150					
0.4% DOWN → X 150					
0.5% DOWN → X 150					
0.4% DOWN → X 150					
0.5% DOWN → X 150					
0.4% DOWN → X 150					
0.5% DOWN → X 150					
0.4% DOWN → X 150					
0.5% DOWN → X 150					
0.4% DOWN → X 150					
0.5% DOWN → X 150					
0.4% DOWN → X 150					
0.5% DOWN → X 150					
0.4% DOWN → X 150					
0.5% DOWN → X 150					
0.4% DOWN → X 150					
0.5% DOWN → X 150					
0.4% DOWN → X 150					
0.5% DOWN → X 150					
0.4% DOWN → X 150					
0.5% DOWN → X 150					
0.4% DOWN → X 150					
0.5% DOWN → X 150					
0.4% DOWN → X 150					
0.5% DOWN → X 150					
0.4% DOWN → X 150					
0.5% DOWN → X 150					
0.4% DOWN → X 150					
0.5% DOWN → X 150					
0.4% DOWN → X 150					
0.5% DOWN → X 150					
0.4% DOWN → X 150					
0.5% DOWN → X 150					
0.4% DOWN → X 150					
0.5% DOWN → X 150					
0.4% DOWN → X 150					
0.5% DOWN → X 150					
0.4% DOWN → X 150					
0.5% DOWN → X 150					
0.4% DOWN → X 150					
0.5% DOWN → X 150					
0.4% DOWN → X 150					
0.5% DOWN → X 150					
0.4% DOWN → X 150					
0.5% DOWN → X 150					
0.4% DOWN → X 150					
0.5% DOWN → X 150					
0.4% DOWN → X 150					
0.5% DOWN → X 150					
0.4% DOWN → X 150					
0.5% DOWN → X 150					
0.4% DOWN →					

**ILS RWY 8L (CAT II & III)**  
HARTSFIELD-JACKSON ATLANTA INTL (ATL)

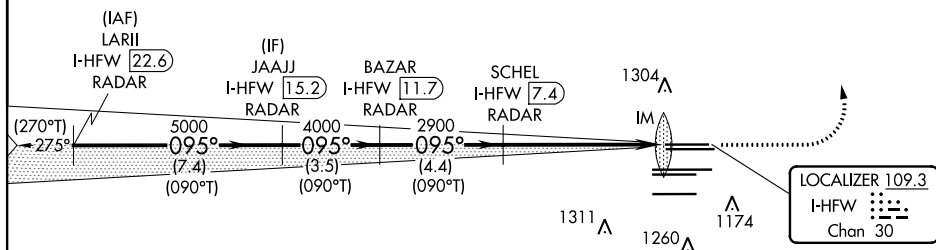
**MISSED APPROACH:** Climb to 1500 then climbing left turn to 3500 on heading 360° and RMG VORTAC R-115 to TROYS/RMG 38.1 DME/RADAR and hold.

**A**

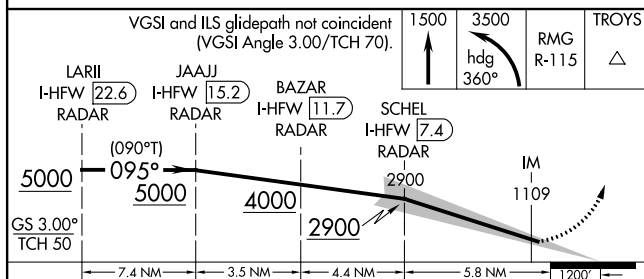
D-ATIS	ATLANTA	ATLANTA TOWER						ALL	GND CON				ALL
ARR <b>119.65</b>	APP CON	8L-26R	8R-26L	9L-27R	9R-27L	10-28	RWYS	(8L-26R,8R-26L)	(9L-27R,9R-27L)	10-28	RWYS		
DEP <b>125.55</b>	<b>127.9 379.9</b>	<b>119.1</b>	<b>125.325</b>	<b>123.85</b>	<b>119.3</b>	<b>119.5</b>	<b>254.4</b>	<b>121.9</b>	<b>121.75</b>	<b>121.65</b>	<b>254.4</b>		



PROTOTYPE-NOT FOR NAVIGATION

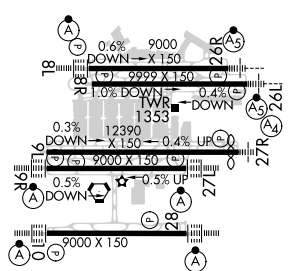


ELEV 1026	<b>D</b>	TDZE 1015
-----------	----------	-----------



CATEGORY	A	B	C	D
S-ILS 8L	CAT II RA 105/12 100 DA 1115			
S-ILS 8L	CAT III RVR 06			

## CATEGORY II & III ILS SPECIAL AIRCREW & AIRCRAFT CERTIFICATION REQUIRED

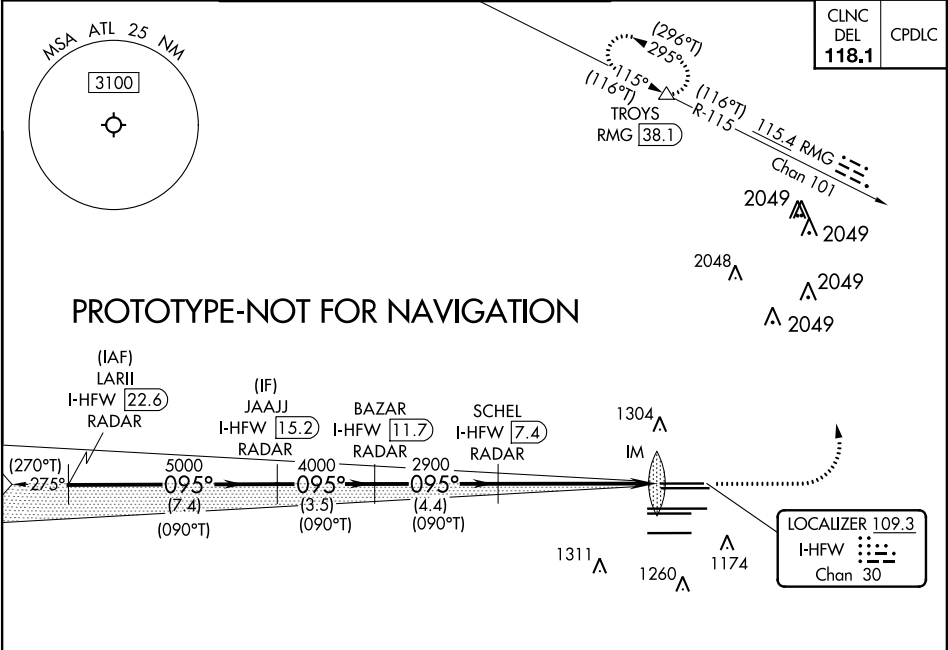


HIRL all Rwys  
TDZ/CL Rwys 8L, 9R, 10, 26R,  
27L and 28

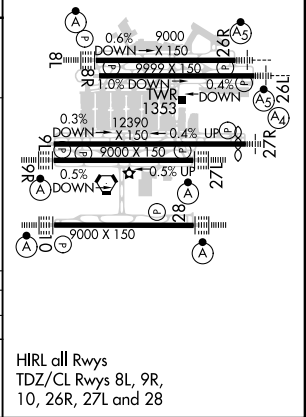
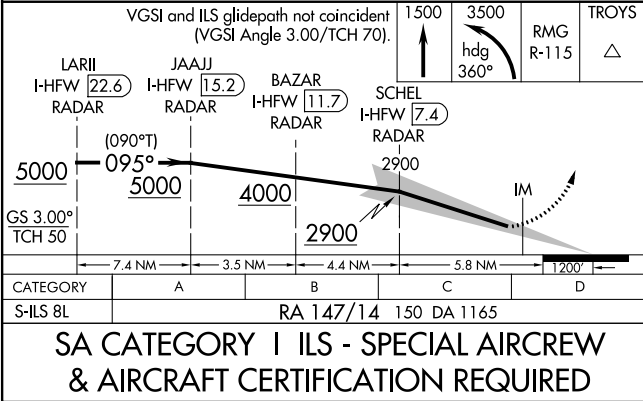
LOC/DME I-HFW	APP CRS	Rwy Idg	8800
109.3	095°	TDZE	1015
Chan 30		Apt Elev	1026

ILS RWY 8L (SA CAT I)  
HARTSFIELD-JACKSON ATLANTA INTL (ATL)

RADAR required for procedure entry. DME or RADAR required.				ALSIF-2	MISSED APPROACH: Climb to 1500 then climbing left turn to 3500 on heading 360° and RMG VORTAC R-115 to TROYS/RMG 38.1 DME/RADAR and hold.			
Simultaneous approach authorized. Requires specific OPSPEC, MSPEC, or LOA approval.								
D-ATIS	ATLANTA	ATLANTA TOWER				GND CON		ALL
ARR 119.65	APP CON	8L-26R	8R-26L	9L-27R	9R-27L	10-28	RWYS	(8L-26R,8R-26L) (9L-27R,9R-27L) 10-28
DEP 125.55	127.9 379.9	119.1	125.325	123.85	119.3	119.5	254.4	121.9 121.75 121.65 254.4



ELEV 1026	D	TDZE 1015
-----------	---	-----------







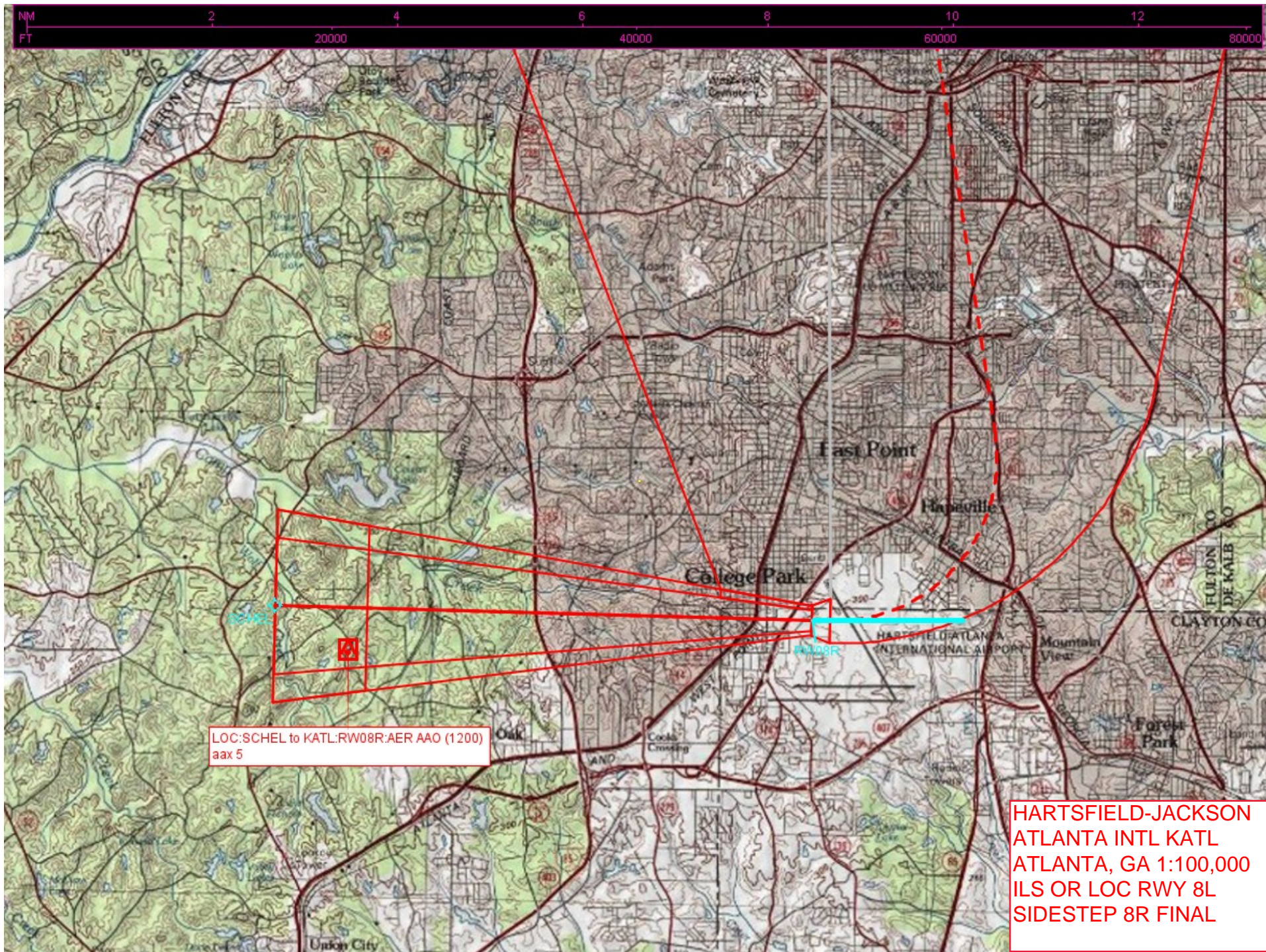




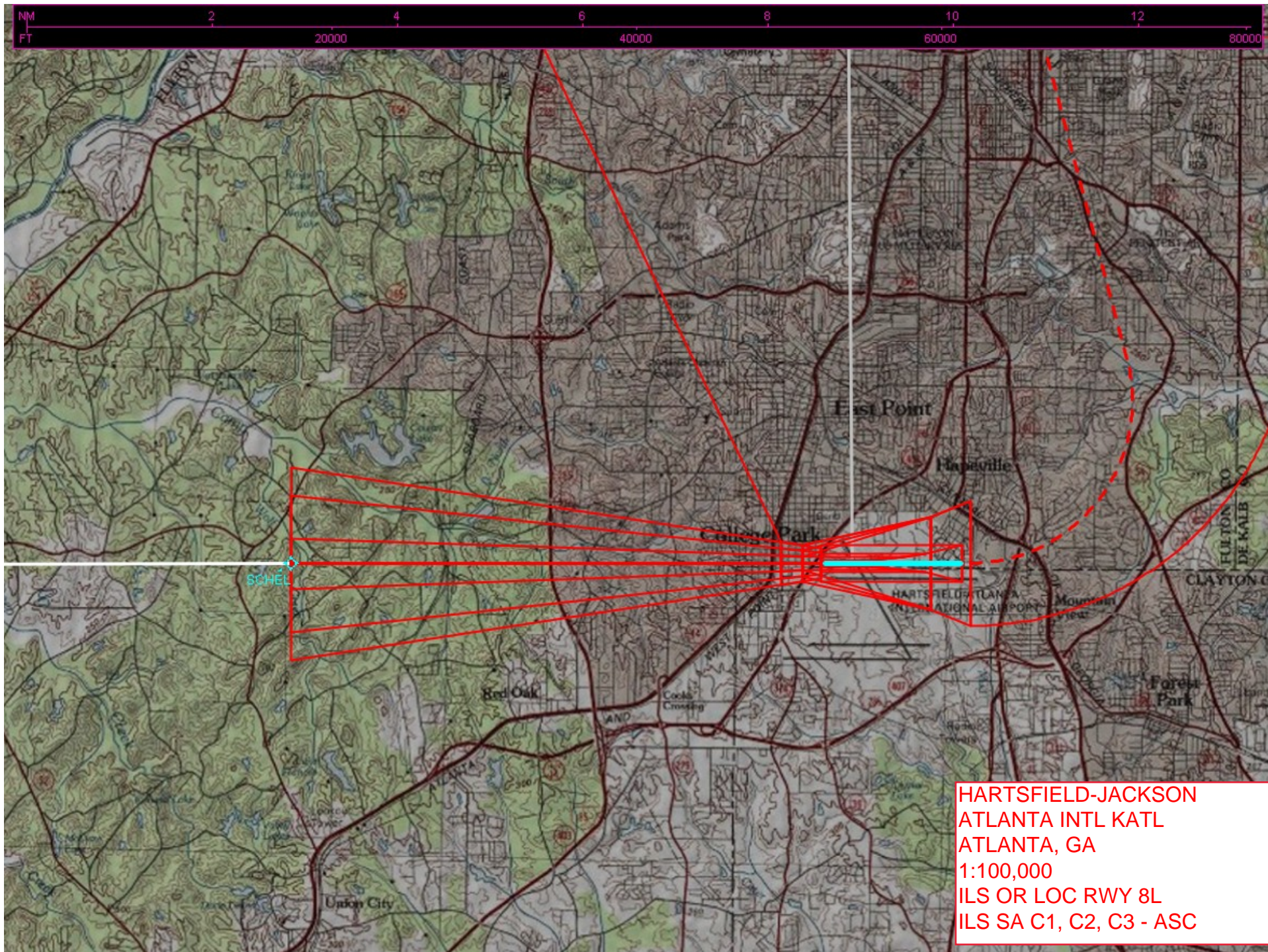














# Federal Aviation Administration Categorical Exclusion Declaration

**Date:** 03/09/20

**IFP:** Erstfeld, David (David.F.Erstfeld@faa.gov)

**Airport Contact:** -

**Request ID:** KATL\_2036

**Single or Multiple Procedure:** Multiple

**Procedure Name(s):** ILS 8L and all variants (SA CAT 1), CAT 2-3, ILS PRM 8L, ILS PRM (SA CAT1), ILS PRM 8L (SA CAT 2-3) to remove references to ATL VOR, PDK VOR AND FTY LOM. NAVAIDs to be decommissioned. ILS 8R and all variants. ILS 9L and all variants. ILS 9R and all variants. ILS 10 and all variants ILS 26L and all variants ILS 26R and all variants ILS 27L and all variants ILS 27R and all variants ILS 28 and all variants

**Procedure Request Description:**

ILS 8L and all variants (SA CAT 1), CAT 2-3, ILS PRM 8L, ILS PRM (SA CAT1), ILS PRM 8L (SA CAT 2-3) to remove references to ATL VOR, PDK VOR AND FTY LOM. NAVAIDs to be decommissioned. ILS 8R and all variants. ILS 9L and all variants. ILS 9R and all variants. ILS 10 and all variants. ILS 26L and all variants. ILS 26R and all variants. ILS 27L and all variants. ILS 27R and all variants. ILS 28 and all variants. NO TRACK CHANGES TO ALL PROCEDURES. NAVAIDs to be decommissioned.

Procedure Benefit: VOR MON program decommissions.

**Declaration of Exclusion:**

The FAA has reviewed the above referenced proposed action and it has been determined, by the undersigned, to be categorically excluded from further environmental documentation according to FAA Order 1050.1, "Environmental Impacts: Policies and Procedures." The implementation of this action will not result in any extraordinary circumstances in accordance with FAA Order 1050.1.

**Basis for this Determination:**

This review was conducted in accordance with policies and procedures in Department of Transportation Order 5610.1, "Procedures for Considering Environmental Impacts" and FAA Order 1050.1.

**The applicable Categorical Exclusion is:**

**5-6.5.k:** Publication of existing air traffic control procedures that do not essentially change existing tracks, create new tracks, change altitude, or change concentration of aircraft on these tracks. (ATO, AVS)

**The above flight procedure has been developed within the accepted parameters.**

Concurrence/Reviewed By:

Veronda JohnsonDate: March 9, 2020

Title:

Environmental Protection Specialist

Approved By:

Charles J GibsonDate: March 9, 2020

Title:

Manager, Environmental, CI & NAS Analytics