

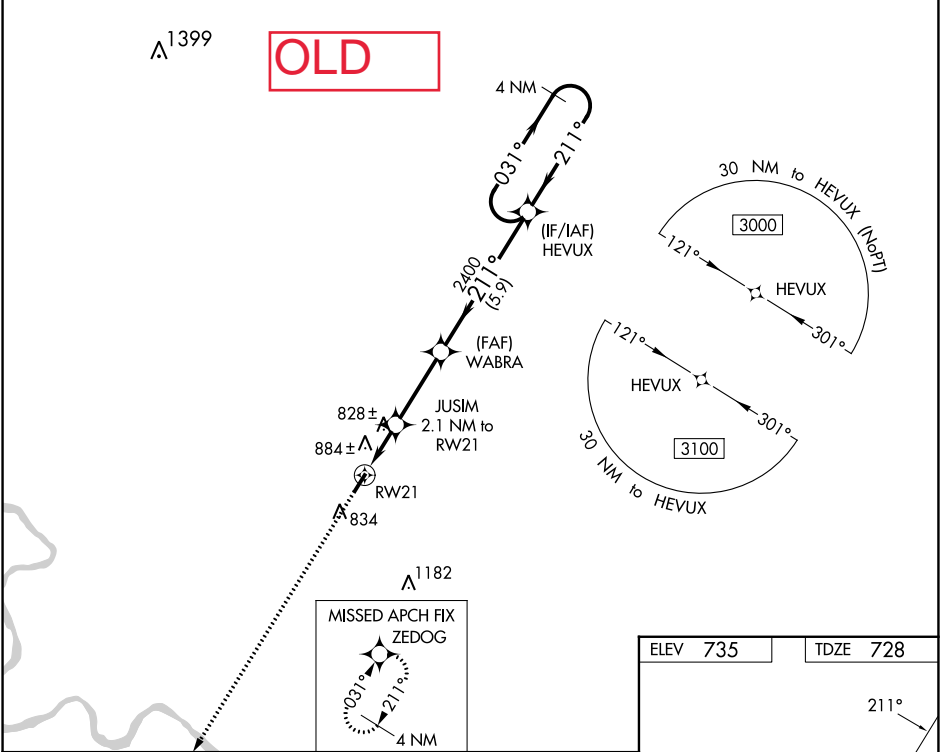
Flight Procedures Cover Page	Task Action: FLIGHT CHECK	Task Type: IAP	Estimated Chart Date: 06/12/2025	APWS Task ID: 9485B2F8DEB94938927C69F243630836	APWS Project ID: 9E7A618DFFE14234A5DC09DF16D4E94F
Procedure: RNAV (GPS) RWY 21 AMDT 3		Enroute: NO	Specialist: Secaida, Roni		Agreement Number:
Airport ID: 42A			Airport City: MELBOURNE		State: AR
Facility ID:	Facility Type:	Flight Inspection Remark Type: New FC Slot			
<div>Procedure Comments: LP mins removed LPV and LNAV/VNAV mins added Contact John Bordy, AJV-A33, 405-954-0980</div> <div><div>QUALITY 41 CHECKED</div><div>QUALITY 25 CHECKED</div></div>					

FIPC BASIC FORM									
PROCEDURE: RNAV (GPS) RWY 21 AMDT 3				AIRPORT NAME: MELBOURNE MUNI/JOHN E MILLER		AIRPORT ID: K42A		SPECIAL CONTROL NO: OG-03-295-25	
FAC ID: K42A21.03			CITY: MELBOURNE			ST: AR		ORIG CHART DATE: 06/12/2025	
DFL TYPE: PROC/S		THIRD PARTY: <input type="checkbox"/> YES		EST. TIME ON SITE: 0.4		REIMB. NUMBER:		PTS TASK ID: 9485B2F8DEB94938927C69F243630836	
PREFLIGHT NOTES									
REVIEWER:						DATE:			
COMMENTS:						CHECK ONE:			
						<input type="checkbox"/> FLT CK REQ <input type="checkbox"/> NFCR <input type="checkbox"/> REJECT			
								YES	NO
						CPV COMPLETE?		X	
PROCEDURE RESULTS									
INSPECTION DATE: 04/18/2025		CREW #: VN568		N #: N67		INSTRUMENT PROCEDURE STATUS: <input checked="" type="checkbox"/> SAT <input type="checkbox"/> SAT W/CHANGES <input type="checkbox"/> UNSAT		ARINC CODING: <input checked="" type="checkbox"/> SAT <input type="checkbox"/> SAT/GOLD <input type="checkbox"/> UNSAT	
FLIGHT INSPECTOR SIGNATURE: russell roslewski @ 04/18/2025 14:39				PRINTED NAME: ROSLEWSKI, RUSSELL BRIAN				NOTAM INITIATED? <input type="checkbox"/> YES <input checked="" type="checkbox"/> NO	
FLIGHT INSPECTOR REMARKS:									
IN-FLIGHT OBSTACLE REPORT									
OBSTRUCTION ID #:		COORDINATES OR LOCATION:		GNSS ALTITUDE (MSL):		BAROMETRIC ALTITUDE (MSL):		HEIGHT ABOVE GROUND LEVEL:	

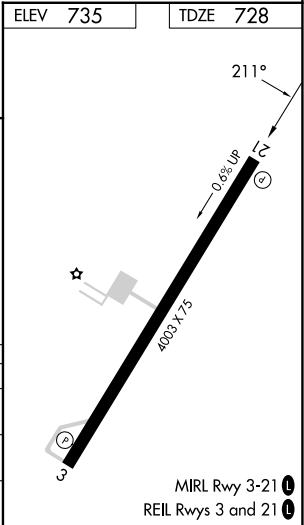
WAAS CH 82131 W21A	APP CRS 211°	Rwy Idg TDZE Apt Elev	4003 728 735
--	------------------------	-----------------------------	---

RNAV (GPS) RWY 21
MELBOURNE MUNI - JOHN E MILLER FLD (42A)

RNP APCH-GPS. When local altimeter setting not received, use Batesville altimeter setting. VDP NA when using Batesville Rgnl altimeter setting. Helicopter visibility reduction below 3/4 SM NA.		MISSED APPROACH: Climb to 3100 direct ZEDOG and hold.	
BVX AWOS-3 126.375	AWOS-3PT 121.575	MEMPHIS CENTER 126.85 281.55	CTAF 122.9 0



3100	ZEDOG	JUSIM 2.1 NM to RW21	WABRA	HEVUX	4 NM Holding Pattern
1.3	0.8 NM	3.1 NM	5.9 NM		
CATEGORY	A	B	C	D	
LP MDA	1180-1	452 (500-1)	NA	NA	
LNAV MDA	1240-1	512 (600-1)	NA	NA	
CIRCLING	1320-1	585 (600-1)	NA	NA	



SC-1, 03 OCT 2024 to 31 OCT 2024

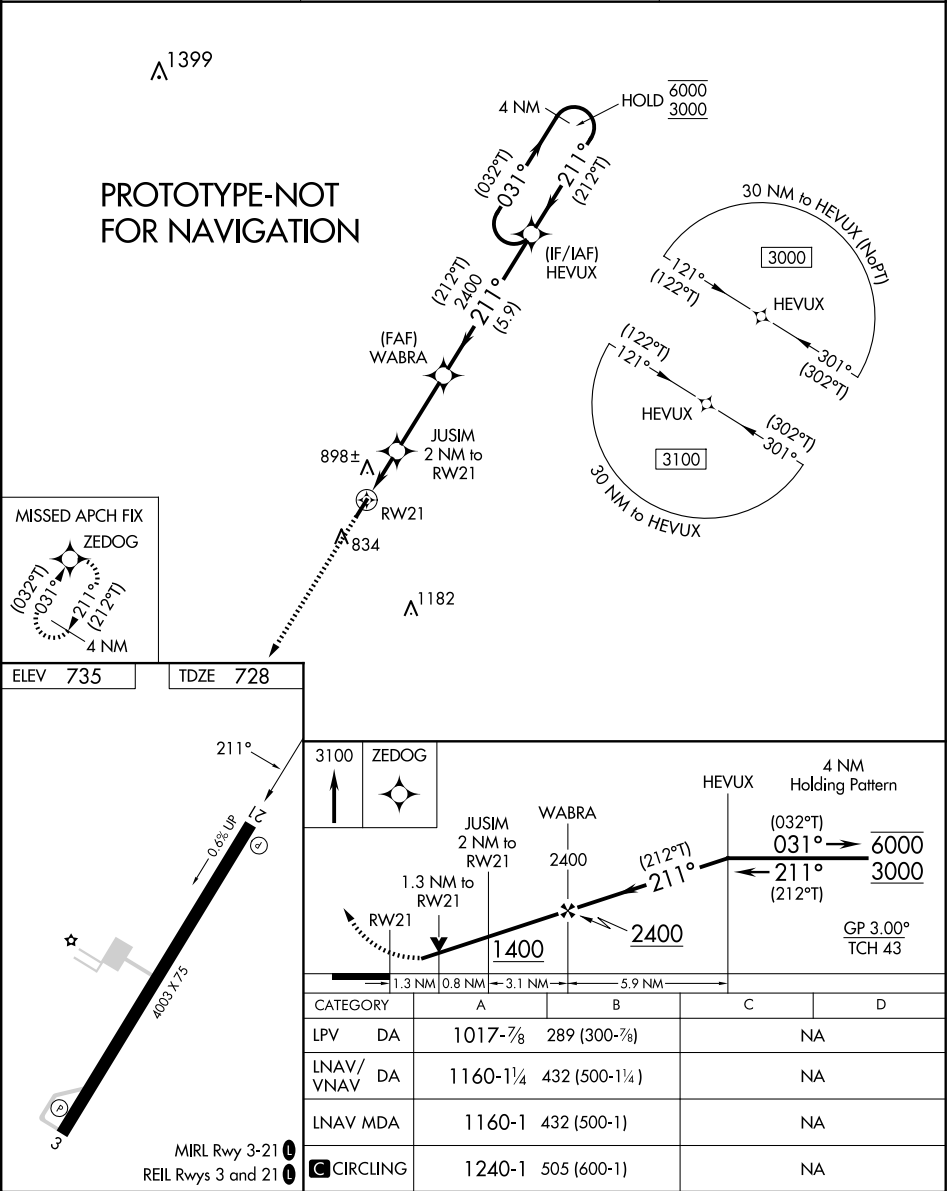
SC-1, 03 OCT 2024 to 31 OCT 2024

WAAS CH 82131 W21A	APP CRS 211°	Rwy Idg TDZE Apt Elev	4003 728 735
--------------------------	-----------------	-----------------------------	--------------------

RNAV (GPS) RWY 21

MELBOURNE MUNI/JOHN E MILLER FLD (42A)

RNP APCH-GPS. ▼ Rwy 21 helicopter visibility reduction below ¾ SM NA. For uncompensated Baro-VNAV systems, LNAV/VNAV NA below -16°C or above 54°C. ▲		MISSED APPROACH: Climb to 3100 direct ZEDOG and hold.
AWOS-3PT 121.575	MEMPHIS CENTER 126.85 281.55	CTAF 122.9 0



K42A MELBOURNE MUNI-JOHN E
MILLER FIELD MELBOURNE, AR
RNAV (GPS) RWY 21
AMDT 3
1:100,000
LPV

LPVMA PENETRATOR TREE (809)
05-092876

Missed Level Surface TERRAIN+AAO (1227)
TPMA329

K42A MELBOURNE MUNI-JOHN E
MILLER FIELD MELBOURNE, AR
RNAV (GPS) RWY 21
AMDT 3
1:100,000
LPV

RW21

LPVMA PENETRATOR TREE (809)
05-092876

Missed Level Surface TERRAIN+AAO (1227)
TPMA329

K42A MELBOURNE MUNI-JOHN E
MILLER FIELD MELBOURNE, AR
RNAV (GPS) RWY 21
AMDT 3
1:100,000
LPV

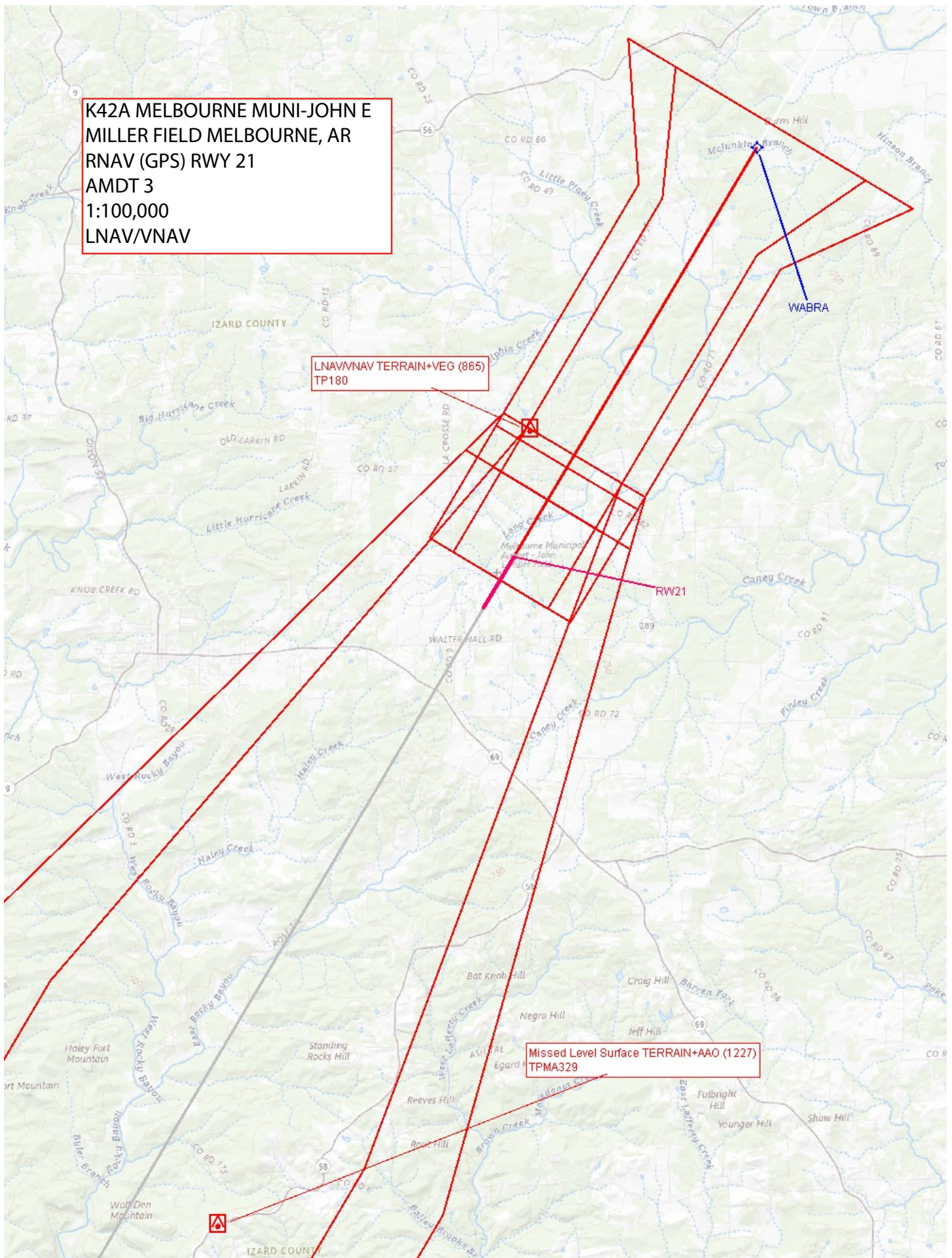
LPVMA PENETRATOR TREE (809)
05-092876

Missed Level Surface TERRAIN+AAO (1227)
TPMA329

K42A MELBOURNE MUNI-JOHN E
MILLER FIELD MELBOURNE, AR
RNAV (GPS) RWY 21
AMDT 3
1:100,000
LNAV/VNAV

LNAV/VNAV TERRAIN+VEG (865)
TP180

Missed Level Surface TERRAIN+AAO (1227)
TPMA329



K42A MELBOURNE MUNI-JOHN E
MILLER FIELD MELBOURNE, AR
RNAV (GPS) RWY 21
AMDT 3
1:100,000
LNAV AND CIRCLING

LNAV WABRA to JUSIM TERRAIN+AAO (1034)
TP0

LNAV JUSIM to K42A:RW21:AER TERRAIN+VEG (898)
TP130

Circling CAT A/B TANK (925)
05-070155

Missed Level Surface TERRAIN+AAO (1227)
TPMA329

K42A MELBOURNE MUNI-JOHN E MILLER FIELD
MELBOURNE, AR
RNAV (GPS) RWY 21
AMDT 3
1:500,000
LNAV FINAL

HEVUX_1 TOWER (1242)
05-001900

Intermediate HEVUX to WABRA TOWER (1067)
05-002092

ZEDOG_1 TOWER (1845)
05-000607

Missed Level Surface TERRAIN+AAO (1227)
TPMA329

K42A MELBOURNE MUNI-JOHN E MILLER FIELD
MELBOURNE, AR
RNAV (GPS) RWY 21
AMDT 3
1:500,000
LNAV FINAL

HEVUX_1 TOWER (1242)
05-001900

Intermediate HEVUX to WABRA TOWER (1067)
05-002092

ZEDOG_1 TOWER (1845)
05-000607

Missed Level Surface TERRAIN+AAO (1227)
TPMA329

K42A MELBOURNE MUNI-JOHN E MILLER FIELD
MELBOURNE, AR
RNAV (GPS) RWY 21
AMDT 3
1:500,000
LNAV FINAL

HEVUX_1 TOWER (1242)
05-001900

Intermediate HEVUX to WABRA TOWER (1067)
05-002092

ZEDOG_1 TOWER (1845)
05-000607

Missed Level Surface TERRAIN+AAO (1227)
TPMA329

K42A MELBOURNE MUNI-JOHN E MILLER FIELD
MELBOURNE, AR
RNAV (GPS) RWY 21
AMDT 3
1:500,000
LNAV FINAL

HEVUX_1 TOWER (1242)
05-001900

Intermediate HEVUX to WABRA TOWER (1067)
05-002092

ZEDOG_1 TOWER (1845)
05-000607

Missed Level Surface TERRAIN+AAO (1227)
TPMA329

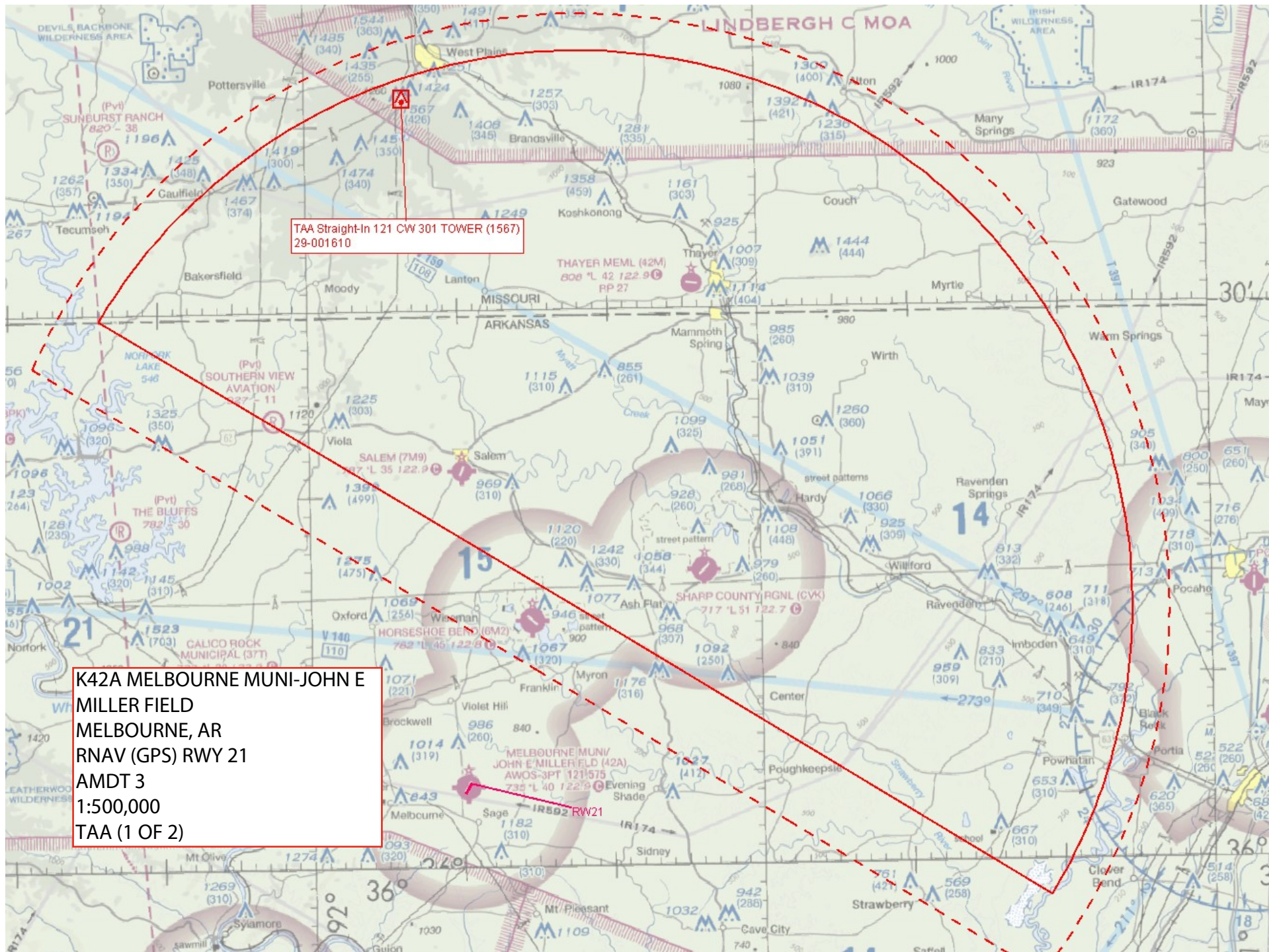
K42A MELBOURNE MUNI-JOHN E MILLER FIELD
MELBOURNE, AR
RNAV (GPS) RWY 21
AMDT 3
1:500,000
LNAV FINAL

HEVUX_1 TOWER (1242)
05-001900

Intermediate HEVUX to WABRA TOWER (1067)
05-002092

ZEDOG_1 TOWER (1845)
05-000607

Missed Level Surface TERRAIN+AAO (1227)
TPMA329



K42A MELBOURNE MUNI-JOHN E MILLER
FIELD
MELBOURNE, AR
RNAV (GPS) RWY 21
AMDT 3
1:500,000
TAA (2 OF 2)

TAA Straight-In 301 CW 121 TOWER (1845)
05-000607

