

Flight Procedures Cover Page	Task Action: Cancellation	Task Type: Graphical DP	Estimated Chart Date: 04/20/2023	APWS Task ID: 939D7734606E4C0B8BE0018DD5048740	APWS Project ID: FFC57918CB974519A1FBBF33F8A273599
Procedure: DEPARTURE OATES ONE (OBSTACLE) (RNAV)		Enroute: NO	Specialist: Jackson, Frank		Agreement Number:
Airport ID: KSEZ			Airport City: SEDONA		State: AZ
Facility ID:	Facility Type:	Flight Inspection Remark Type:			
<div>Procedure Comments: ACTIVE DATA USED.</div> <div>CONTACT: ERIC SUSKI, AJV-A431 LEAD, 405.954.7331.</div> <div>QUALITY 20 CHECKED</div>					

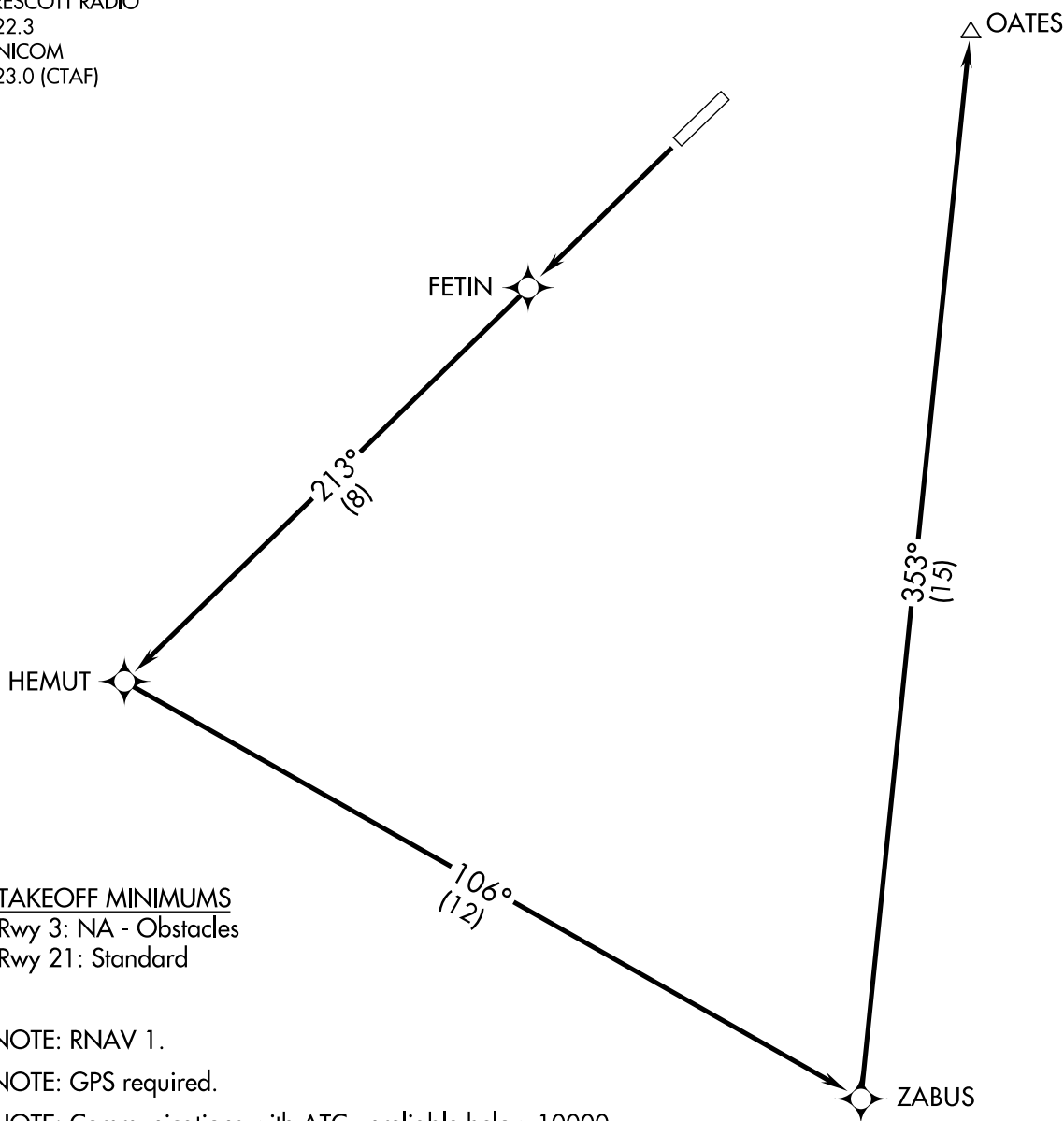
(OATES1.OATES) 16259

# OATES ONE DEPARTURE (OBSTACLE) (RNAV)

SL-6169 (FAA)

SEDONA (SEZ)  
SEDONA, ARIZONA

PHOENIX DEP CON  
126.375 236.775  
PRESCOTT RADIO  
122.3  
UNICOM  
123.0 (CTAF)



TAKEOFF MINIMUMS  
Rwy 3: NA - Obstacles  
Rwy 21: Standard

NOTE: RNAV 1.

NOTE: GPS required.

NOTE: Communications with ATC unreliable below 10000.

## TAKEOFF OBSTACLE NOTES

Rwy 21: Trees beginning 1642' from DER, 240' right of centerline, up to 100' AGL/4786' MSL.  
Bush 147' from DER, 202' left of centerline, 5' AGL/4740' MSL.

NOTE: Chart not to scale

## DEPARTURE ROUTE DESCRIPTION

TAKEOFF RUNWAY 21: Climb direct FETIN then via 213° track/8 NM to HEMUT, then left turn via 106° track/12 NM to ZABUS, then left turn via 353° track/15 NM to OATES. Maintain 10500 or assigned altitude.

SW-4, 03 NOV 2022 to 01 DEC 2022

SW-4, 03 NOV 2022 to 01 DEC 2022

OATES ONE DEPARTURE (OBSTACLE) (RNAV)  
(OATES1.OATES) 10APR08

SEDONA, ARIZONA  
SEDONA (SEZ)