

Flight Procedures Cover Page	Task Action: P-NOTAM	Task Type: IAP	Estimated Chart Date: 10/08/2020	APWS Task ID: 92EEC23DE7074F2B829DA1AC4AA696D1	APWS Project ID: 54448796B33C4C29B2F5D47FB14653F7
Procedure: ILS OR LOC RWY 4 AMDT 17D		Enroute: NO	Specialist: Roslewski, Russell		Agreement Number:
Airport ID: KLEX	Airport Name: BLUE GRASS		Airport City: LEXINGTON		State: KY
Facility ID:	Facility Type:	Flight Inspection Remark Type:			
<p>Procedure Comments: P-NOTAM</p> <p>New circling areas based on existing procedure at the airport – RNAV (GPS) RWY 4, Amdt 1B.</p> <p>Processed IAW Aircraft Operations Group (AJF-10) Memo, April 29, 2020, Subject: Flight Inspection Review Not Required.</p> <p>Dave Danner, 405-954-5077</p>					

QUALITY
24
CHECKED

QUALITY
41
CHECKED

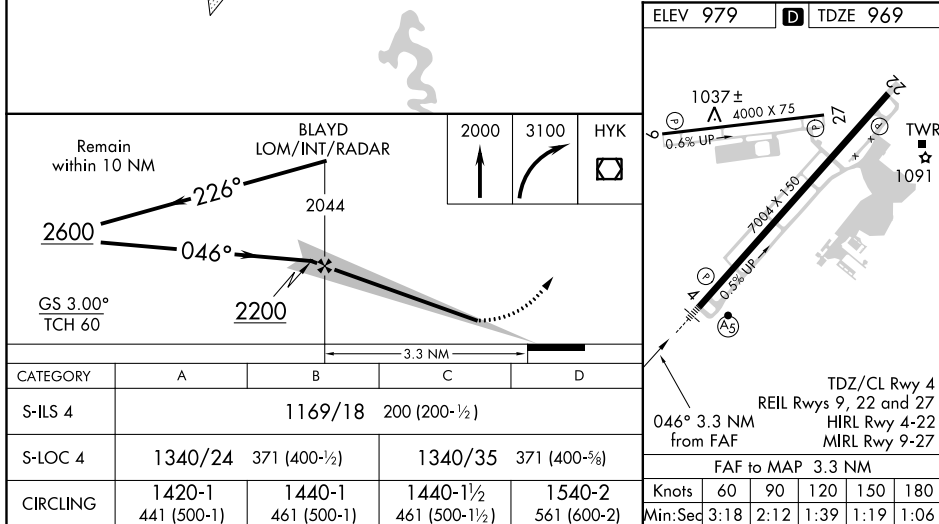
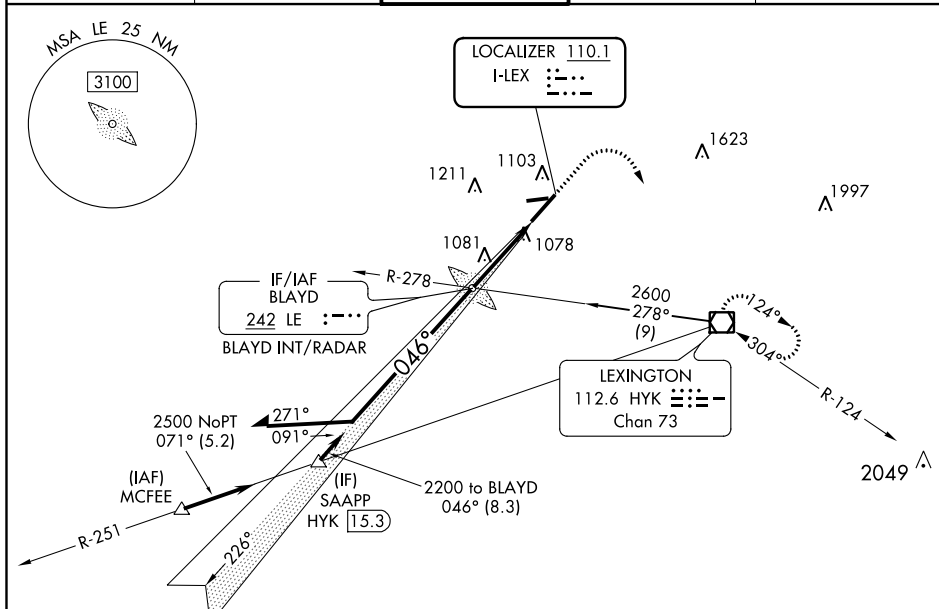
LOC I-LEX 110.1	APP CRS 046°	Rwy Idg 6604
		TDZE 969
		Apt Elev 979

ILS or LOC RWY 4

BLUE GRASS (LEX)

<p>⚠ When local altimeter setting not received, use Capital City altimeter setting and increase all DA 62 feet and all MDA 80 feet and S-LOC 4 Cats C/D visibility ¼ SM. For inop MALSR when using Capital City altimeter setting, increase S-ILS 4 all Cats visibility to RVR 4500.</p>	<p>MALSR</p>	<p>MISSED APPROACH: Climb to 2000 then climbing right turn to 3100 direct to HYK VOR/DME and hold.</p>
---	--------------	---

ATIS 126.3	LEXINGTON APP CON 120.15 259.3	LEXINGTON TOWER 119.1 257.8	GND CON 121.9	CLNC DEL 132.35
----------------------	--	---------------------------------------	-------------------------	---------------------------



1:100K

Map from RNAV (GPS) RWY 4, Amdt 1B showing new circling areas and controlling obstacles.

