

Flight Procedures Cover Page	Task Action: Abbreviated Amendment	Task Type: IAP	Estimated Chart Date: 11/27/2025	APWS Task ID: 92D7477572954548965A7A9F8A484E08	APWS Project ID: 91AF05E82D70417991C4A29ED39C8EBB
Procedure: RNAV (GPS) RWY 35 AMDT 1A		Enroute: NO	Specialist: Gorman, Barbara		Agreement Number:
Airport ID: KAZO			Airport City: KALAMAZOO		State: MI
Facility ID:	Facility Type:	Flight Inspection Remark Type:			
<div>Procedure Comments: PROCESSED IAW TECHNICAL SUPPORT GROUP (AJF-17) MEMO DATED 07/07/2021 GUIDANCE FOR PROCEDURAL CHANGES REQUIRING FLIGHT INSPECTION/VALIDATION. REMOVE NOTAM FDC 5/1928. CONTACT: CASIMIR TABAKA: 405.954.7931</div> <div><div>QUALITY 9 CHECKED BEGUE</div><div>07/21/2025 QUALITY 14 CHECKED</div></div>					

WAAS CH 61102 W35A	APP CRS 354°	Rwy Idg 6502 TDZE 868 Apt Elev 874
--	------------------------	---

RNAV (GPS) RWY 35
KALAMAZOO/BATTLE CREEK INTL (AZO)

RNP APCH.	<div><div>For uncompensated Baro-VNAV systems, LNAV/VNAV NA below -19°C or above 54°C. Circling Rwy 5, 9, 17, 23, 27 NA at night. **RVR 1800 authorized with use of FD or AP or HUD to DA.</div><div>MALSR</div><div>MISSED APPROACH: Climb to 3000 direct OSEGO and hold.</div></div>
-----------	--

ATIS 127.25	GREAT LAKES APP CON ★ 121.2 239.25	KALAMAZOO TOWER ★ 118.3 (CTAF) 0 257.875	GND CON 121.9	CLNC DEL 121.75	UNICOM 122.95
-----------------------	--	--	-------------------------	---------------------------	-------------------------

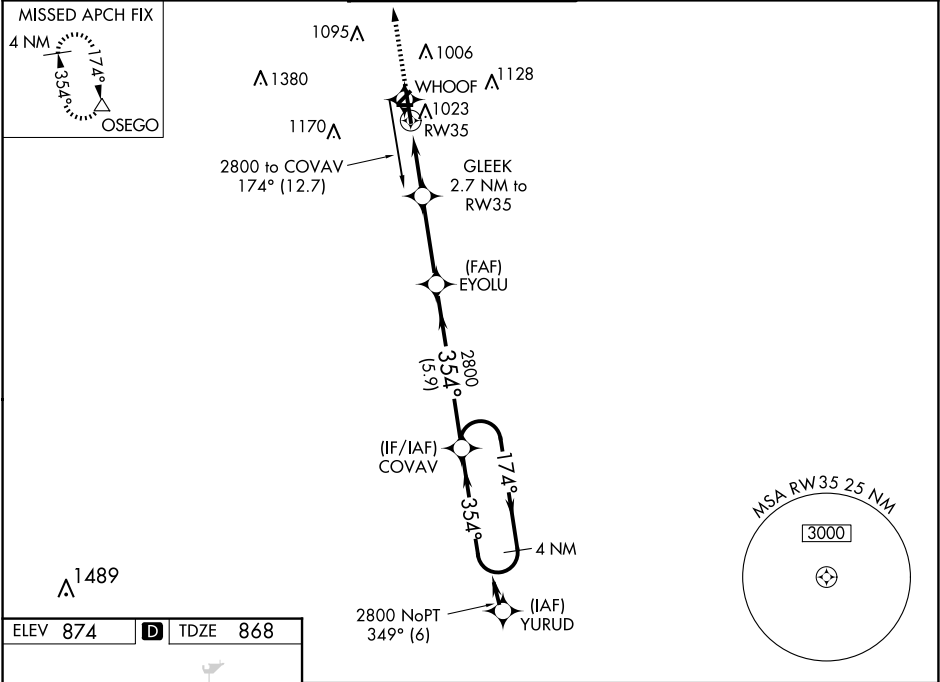


Diagram of HIRL Rwy 17-35 showing various navigation aids and distances. It includes a 65° heading, 2800 X 60, 0.4° UP, 3235 X 100, 0.7° UP, 0.51 X 0.59, 947, 354°, and 35°.

HIRL Rwy 17-35
 REIL Rwys 5, 17 and 23
 MRL Rwys 5-23 and 9-27

<div> <div> <div>3000</div> <div>OSEGO</div> <div></div> </div> <div> <div>* LNAV only.</div> <div>GLEEK 2.7 NM to RW35</div> <div>EYOLU</div> <div>COVAV</div> <div>4 NM Holding Pattern</div> <div>2800</div> <div>GP 3.00° TCH 53</div> </div> </div>				
<div> <div> <div>1.1</div> <div>1.6 NM</div> <div>3.2 NM</div> <div>5.9 NM</div> </div> <div> <div>1.1 NM to RW35</div> <div>*1780</div> <div>354°</div> <div>174°</div> <div>354°</div> </div> </div>				
CATEGORY	A	B	C	D
LPV DA **	1068/24		200 (200-½)	
LNAV/VNAV DA	1264/35		396 (400-¾)	
LNAV MDA	1280/24	412 (500-½)	1280/40	412 (500-¾)
CIRCLING	1380-1	506 (600-1)	1480-1¾ 606 (700-1¾)	1480-2 606 (700-2)

