

Flight Procedures Cover Page	Task Action: P-NOTAM	Task Type: IAP	Estimated Chart Date: 12/30/2021	APWS Task ID: 92B1648CF90941B694E40DDBBE995285	APWS Project ID: BF8A8953D7934875BC341556A703797F
Procedure: RNAV (GPS) RWY 36 AMDT 0C		Enroute: NO	Specialist: Marsh, Andre		Agreement Number:
Airport ID: KJAS		Airport City: JASPER		State: TX	
Facility ID:	Facility Type:	Flight Inspection Remark Type:			
<p>Procedure Comments: P-NOTAM CIRCLING RADII INCREASE JASON KRETSCHMER: 405-954-5077</p> <p style="text-align: center;"><i>Digitally signed by</i> JASON KRETSCHMER Nov 05, 2021</p>					



WAAS CH 42813 W36A	APP CRS 357°	Rwy Idg TDZE 192 Apt Elev 213	5500
--	------------------------	---	-------------

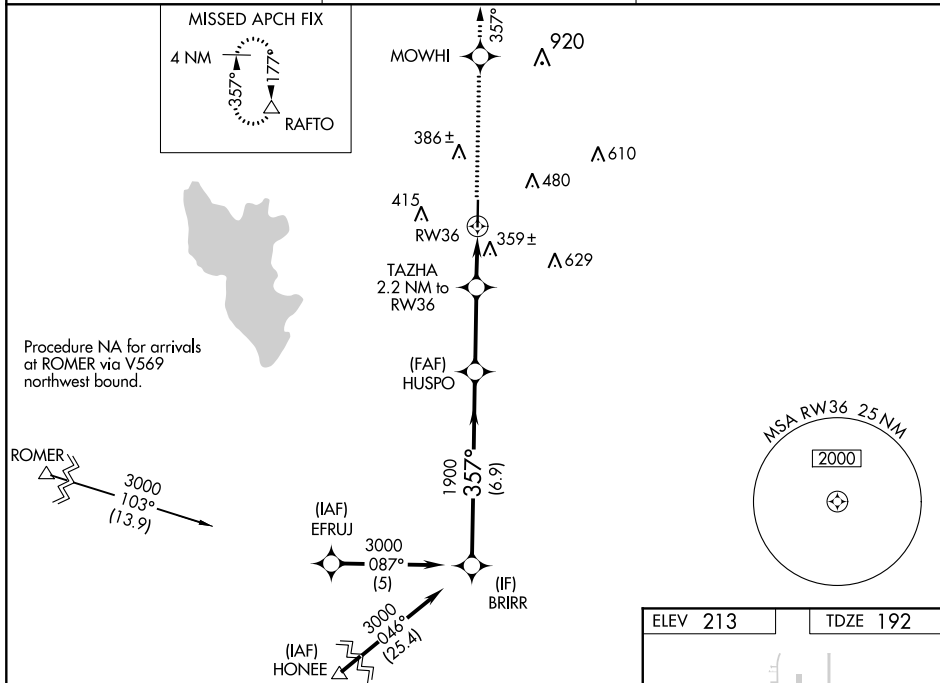
RNAV (GPS) RWY 36

JASPER COUNTY-BELL FIELD (JAS)

⚠ Baro-VNAV NA when using De Ridder altimeter setting. For uncompensated Baro-VNAV systems, LNAV/VNAV NA below -15°C (5°F) or above 54°C (130°F). DME/DME RNP-0.3 NA. Helicopter visibility reduction below $\frac{3}{4}$ SM NA. VDP NA when using De Ridder altimeter setting. When local altimeter setting not received, use De Ridder altimeter setting and increase all DA 85 feet, all MDA 100 feet; increase LPV visibility all Cats and LNAV Cat C $\frac{3}{8}$ mile, LNAV/VNAV visibility all Cats and Circling Cat C $\frac{1}{4}$ mile.

MISSED APPROACH:
Climb to 4000 direct MOWHI and via track 357° to RAFTO and hold.

AWOS-3 118.375	HOUSTON CENTER 126.95 363.05	UNICOM 122.8 (CTAF) 0
--------------------------	--	---------------------------------



Procedure Turn NA	BRIRR	VGSI and RNAV glidepath not coincident (VGSI Angle 3.15/TCH 49).	4000	MOWHI	tr 357°	RAFTO
3000	357°	HUSPO	1900	900	TAZHA 2.2 NM to RW36	*1.5 NM to RW36
GP 3.00° TCH 41	6.9 NM	3 NM	0.7 NM	1.5 NM	RW36	*LNAV only
CATEGORY	A	B	C	D		
LPV DA	594-1 $\frac{3}{8}$	402 (400-1 $\frac{3}{8}$)			NA	
LNAV/VNAV DA	675-1 $\frac{3}{4}$	483 (500-1 $\frac{3}{4}$)			NA	
LNAV MDA	680-1	488 (500-1)	680-1 $\frac{3}{8}$ 488 (500-1 $\frac{3}{8}$)		NA	
CIRCLING	740-1	527 (600-1)	740-1 $\frac{1}{2}$ 527 (600-1 $\frac{1}{2}$)		NA	

