

Flight Procedures Cover Page	Task Action: FLIGHT CHECK	Task Type: SID	Estimated Chart Date: 09/10/2020	APWS Task ID: 926CA5DC20DE47548A608AB4BAABE356	APWS Project ID: DBDE8CB8D80442DF9843C4BBEEEE1497
Procedure: SID ALANA TWO HONOLULU HI PHNL		Enroute: YES	Specialist: Lafferty, James		Agreement Number:
Airport ID: PHNL	Airport Name: DANIEL K INOUYE INTL		Airport City: HONOLULU		State: HI
Facility ID:	Facility Type:	Flight Inspection Remark Type: New FC Slot			

Procedure Comments:

ACTIVE DATA USED FOR PHNL SID AMENDMENT.

CANCELS NOTAM 9/8768.

NOT FOR CIVIL USE PROCEDURE.

CHANGE IN CLIMB GRADIENT RWY 8L/R.

CONTACT DAVE TEFFETELLER AT 202-267-5177.

QUALITY  
22  
CHECKED  
6.19.2020  
BD

QUALITY  
26  
CHECKED

<b>FIPC BASIC FORM</b>						
<b>PROCEDURE:</b> SID ALANA TWO HONOLULU HI PHNL			<b>AIRPORT NAME:</b> DANIEL K INOUE INTL		<b>AIRPORT ID:</b> PHNL	<b>SPECIAL CONTROL NO:</b> PP-07-160-20
<b>FAC ID:</b> ALANA2		<b>CITY:</b> HONOLULU			<b>ST:</b> HI	<b>ORIG CHART DATE:</b> 12/31/2020
<b>DFL TYPE:</b> PROC/T	<b>THIRD PARTY:</b> <input type="checkbox"/> YES	<b>EST. TIME ON SITE:</b> 0.4	<b>REIMB. NUMBER:</b>	<b>PTS TASK ID:</b>		
<b>PREFLIGHT NOTES</b>						
<b>REVIEWER:</b>					<b>DATE:</b>	
<b>COMMENTS:</b>					<b>CHECK ONE:</b> <input type="checkbox"/> FLT CK REQ <input type="checkbox"/> NFCR <input type="checkbox"/> REJECT	
					<b>YES</b>	<b>NO</b>
					<b>CPV COMPLETE?</b>	
<b>PROCEDURE RESULTS</b>						
<b>INSPECTION DATE:</b> 10/21/2020	<b>CREW #:</b> VN284	<b>N #:</b> N87	<b>INSTRUMENT PROCEDURE STATUS:</b> <input checked="" type="checkbox"/> SAT <input type="checkbox"/> SAT W/CHANGES <input type="checkbox"/> UNSAT		<b>ARINC CODING:</b> <input type="checkbox"/> SAT <input type="checkbox"/> SAT/GOLD <input type="checkbox"/> UNSAT	
<b>FLIGHT INSPECTOR SIGNATURE:</b> todd d haifley @ 10/21/2020 22:57			<b>PRINTED NAME:</b> HAIFLEY, TODD DANIEL			<b>NOTAM INITIATED?</b> <input type="checkbox"/> YES <input checked="" type="checkbox"/> NO
<b>FLIGHT INSPECTOR REMARKS:</b> DP sat						
<b>IN-FLIGHT OBSTACLE REPORT</b>						
<b>OBSTRUCTION ID #:</b>	<b>COORDINATES OR LOCATION:</b>	<b>GNSS ALTITUDE (MSL):</b>	<b>BAROMETRIC ALTITUDE (MSL):</b>	<b>HEIGHT ABOVE GROUND LEVEL:</b>		

OLD

17117

JOINT BASE PEARL HARBOR HICKAM (PHIK)

## ALANA ONE DEPARTURE (ALANA1•ALANA)

SL-754 [USAF]

HONOLULU, HAWAII

ATIS  
127.9 279.4  
CLNC DEL  
121.4 281.4  
GND CON  
121.9 348.6  
HONOLULU TOWER  
118.1 257.8  
HCF APP  
118.3 317.6  
N119.1 265.0  
W118.3 269.0

HONOLULU  
114.8 HNL  
Chan 95

Departure from Rwy 8L/R:  
Right turn to heading 155° must be  
completed within 2 NM of departure  
end of rwy (HNL VORTAC 3.6 DME).  
Departure from Rwy 26L/R:  
Left turn to heading 220° must be  
completed within 2 NM of departure  
end of rwy (HNL VORTAC 3 DME).

CAUTION: Large ships operating in  
channel waters surrounding HNL  
airport.

### TAKEOFF MINIMUMS

Rwy 4L/R: NA - Obstacles/Noise.  
Rwy 22L/R, 26L/R: Standard.  
Rwy 8L: Standard with minimum climb  
of 375' per NM to 1800.  
Rwy 8R: Standard with climb  
of 210' per NM to 600.

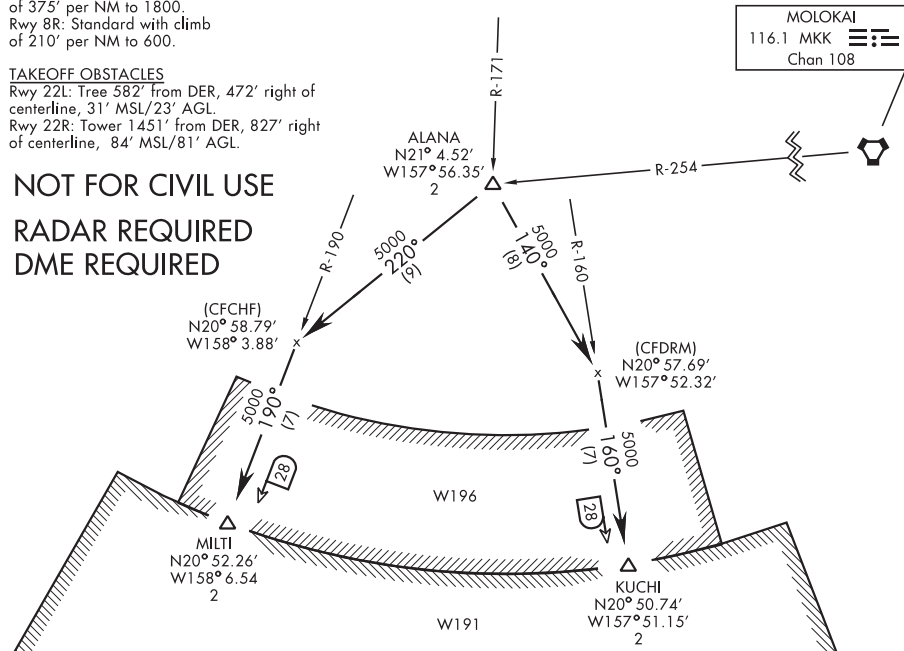
### TAKEOFF OBSTACLES

Rwy 22L: Tree 582' from DER, 472' right of  
centerline, 31' MSL/23' AGL.  
Rwy 22R: Tower 1451' from DER, 827' right  
of centerline, 84' MSL/81' AGL.

NOT FOR CIVIL USE

RADAR REQUIRED

DME REQUIRED



### DEPARTURE ROUTE DESCRIPTION

TAKE-OFF RWY 8 L/R: Climbing right turn heading 155° to 2500. Thence...

TAKE-OFF RWY 22 L/R: Climb heading 220° to 2500. Thence...

TAKE-OFF RWY 26 L/R: Climbing left turn heading 220° to 2500. Thence...

... expect RADAR vectors to ALANA, then on assigned transition. Maintain 5000, expect clearance to enroute altitude at ALANA.

KUCHI TRANSITION (ALANA1•KUCHI): From over ALANA via heading 140° and  
HNL R-160 to KUCHI.

MILTI TRANSITION (ALANA1•MILTI): From over ALANA via heading 220° and  
HNL R-190 to MILTI.

## ALANA ONE DEPARTURE (ALANA1•ALANA)

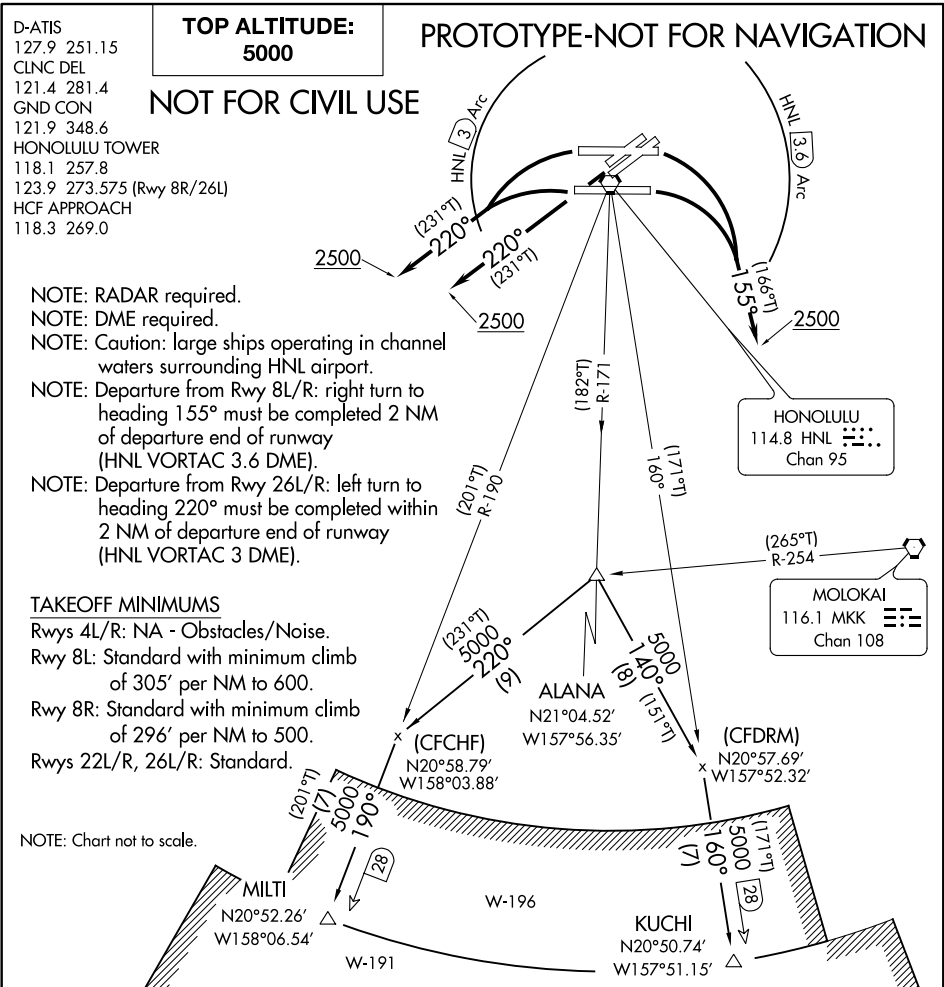
HONOLULU, HAWAII

Orig 27APR17

JOINT BASE PEARL HARBOR HICKAM (PHIK)

(ALANA2.ALANA) FIG  
ALANA TWO DEPARTURE

DANIEL K INOUE INTL (HNL) (PHNL)  
HONOLULU, HAWAII



**DEPARTURE ROUTE DESCRIPTION**

**TAKEOFF RUNWAYS 8L/R:** Climbing right turn heading 155° to 2500. Thence. . .

**TAKEOFF RUNWAYS 22L/R:** Climb heading 220° to 2500. Thence. . .

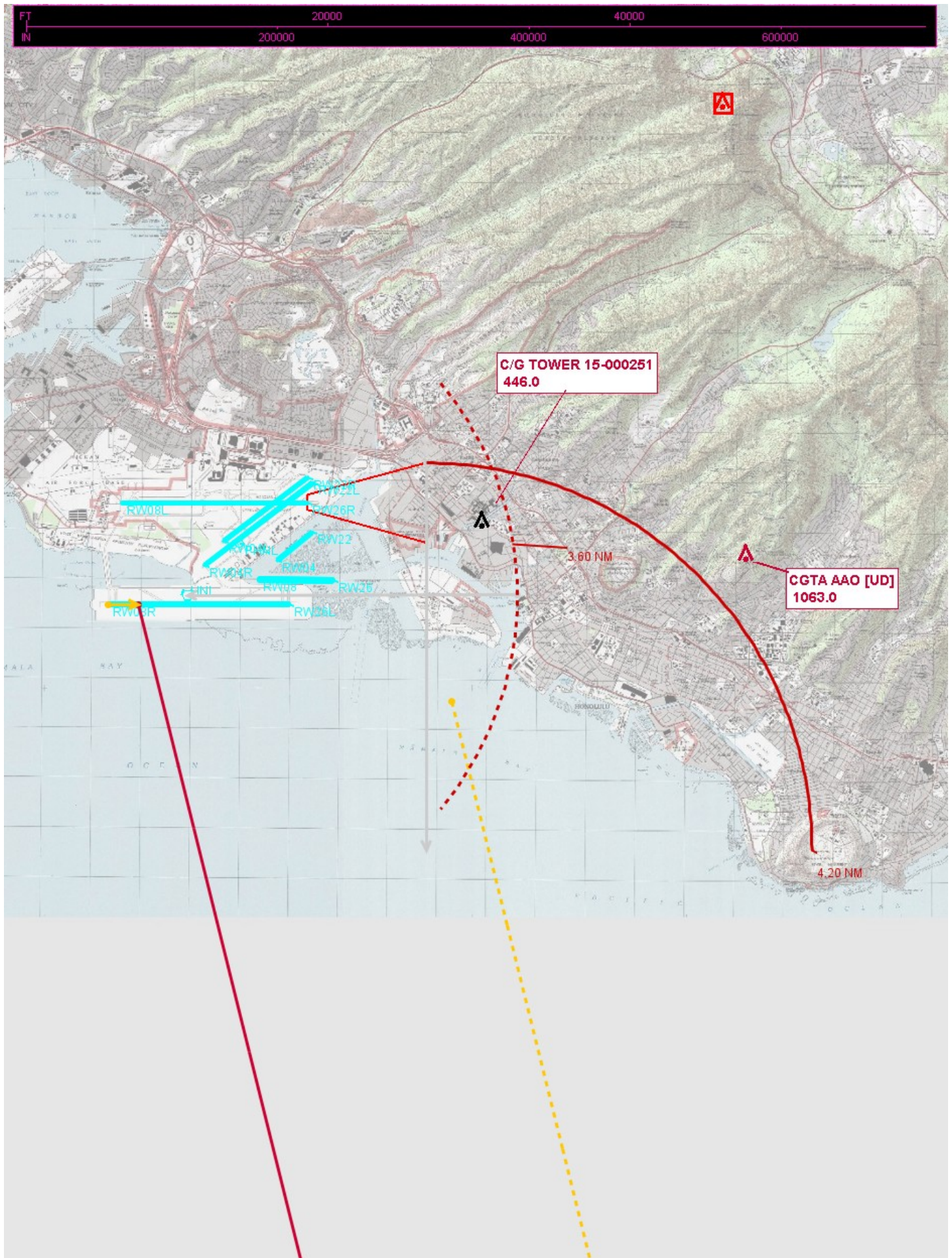
**TAKEOFF RUNWAYS 26L/R:** Climbing left turn heading 220° to 2500. Thence. . .

. . . expect RADAR vectors to ALANA, then on assigned transition. Maintain 5000, expect clearance to enroute altitude at ALANA.

**KUCHI TRANSITION (ALANA2.KUCHI):** From over ALANA on heading 140° and HNL R-160 to KUCHI.

**MILTI TRANSITION (ALANA2.MILTI):** From over ALANA on heading 220° and HNL R-190 to MILTI.

# RWY 8L ICA





# RWY 8R ICA

