

Flight Procedures Cover Page	Task Action: Flight Inspection	Task Type: IAP	Estimated Chart Date: 11/27/2025	APWS Task ID: 9203B5CF225B4404AEBBC600BEA04361B	APWS Project ID: ADF725D1C5674C3294D19A34C1030CAD
Procedure: RNAV (GPS) RWY 6 AMDT 0E		Enroute: NO	Specialist: Gorman, Barbara		Agreement Number:
Airport ID: KBMG			Airport City: BLOOMINGTON		State: IN
Facility ID:	Facility Type:	Flight Inspection Remark Type:			
<div>Procedure Comments: PROCESSED IAW TECHNICAL SUPPORT GROUP (AJF-17) MEMO DATED 07/07/2021 GUIDANCE FOR PROCEDURAL CHANGES REQUIRING FLIGHT INSPECTION/VALIDATION. NEW FINAL LNAV CONTROLLING OBSTACLE. REMOVE NOTAM FDC 5/6284. CONTACT: CASIMIR TABAKA: 405.954.7931</div> <div>QUALITY 6 SN 7/16/25 CHECKED</div> <div>QUALITY 41 CHECKED</div>					

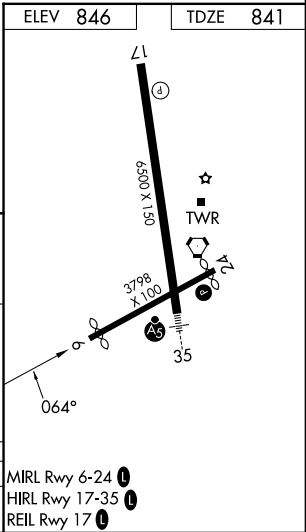
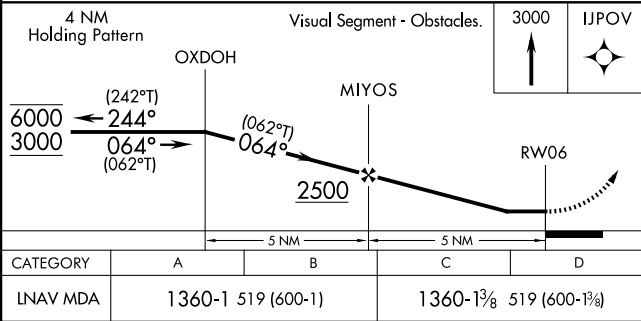
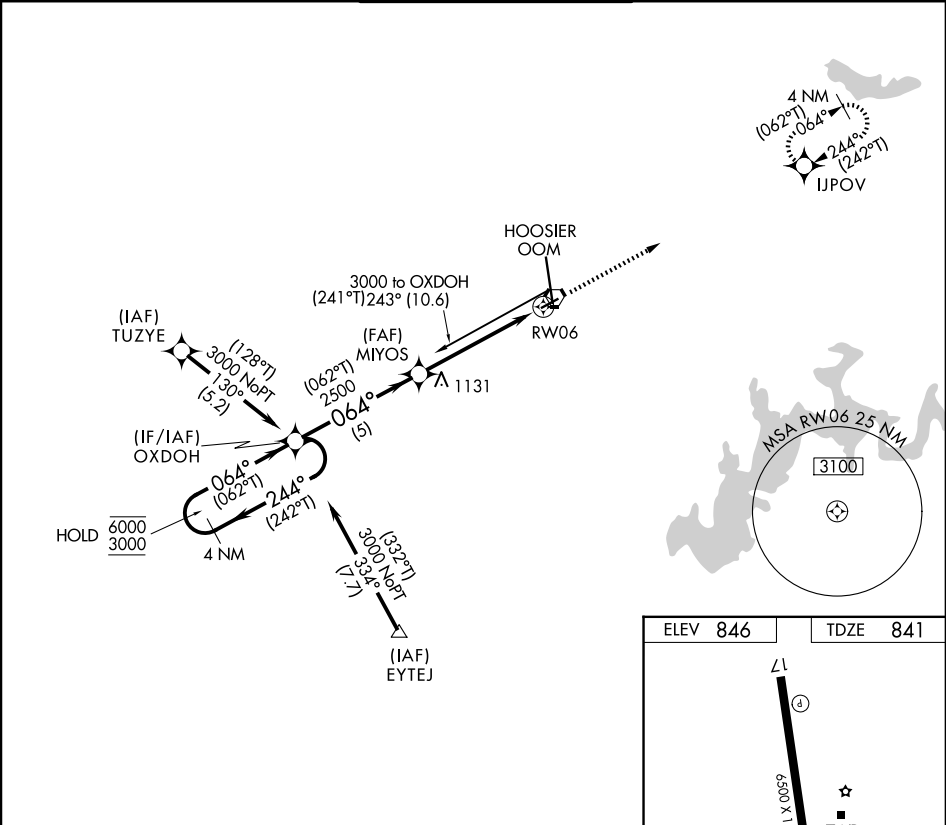
APP CRS	Rwy Ldg	3494
064°	TDZE	841
	Apt Elev	846

RNAV (GPS) RWY 6

MONROE COUNTY (BMG)

RNP APCH - GPS.		MISSED APPROACH: Climb to 3000 direct IJPOV and hold.
	Rwy 6 helicopter visibility reduction below 1 SM NA. Procedure NA at night.	
	When local altimeter setting not received, use HUF altimeter setting and increase all MDAs 140 feet and visibility Cats C and D ½ SM.	

ASOS 134.525	HULMAN APP CON 128.025 339.8	BLOOMINGTON TOWER ★ 120.775 (CTAF)	GND CON 121.9	UNICOM 122.95
-----------------	---------------------------------	---------------------------------------	------------------	------------------



BLOOMINGTON, INDIANA

APP CRS	Rwy Ldg	<b>3494</b>
<b>064°</b>	TDZE	<b>840</b>
	Apt Elev	<b>846</b>

# RNAV (GPS) RWY 6

## MONROE COUNTY (BMG)

RNP APCH.

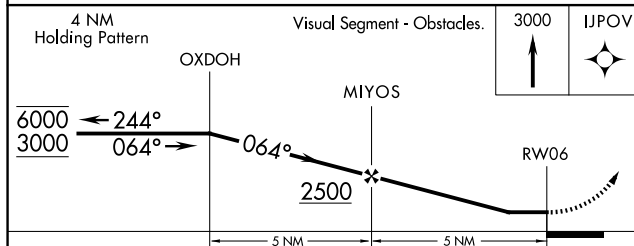
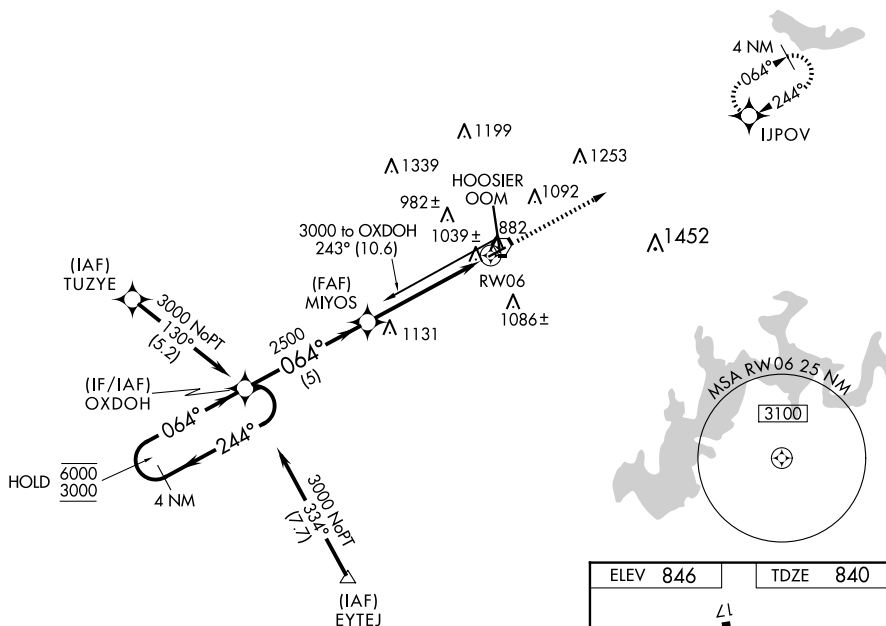


ANA

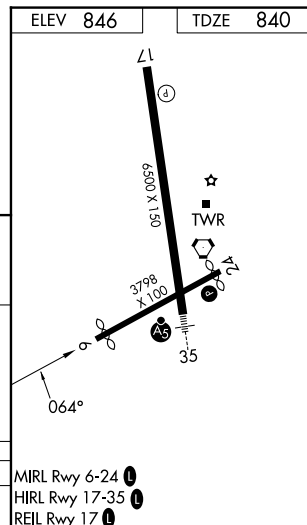
Procedure NA at night.  
Rwy 6 helicopter visibility reduction below 1 SM NA.

**MISSED APPROACH:** Climb to 3000 direct UPOV and hold.

ASOS <b>134.525</b>	HULMAN APP CON <b>128.025 339.8</b>	BLOOMINGTON TOWER ★ <b>120.775 (CTAF) 0</b>	GND CON <b>121.9</b>	UNICOM <b>122.95</b>
------------------------	--	--	-------------------------	-------------------------



CATEGORY	A	B	C	D
LNAV MDA	1300-1 460 (500-1)		1300-1¼ 460 (500-1¼)	1300-1½ 460 (500-1½)



BLOOMINGTON, INDIANA

Orig-D 18JUL19

39°09'N-86°37'W

MONROE COUNTY (BMG)

## RNAV (GPS) RWY 6

EC-2, 12 JUN 2025 to 10 JUL 2025

EC-2, 12 JUN 2025 to 10 JUL 2025



