

| | | | | | |
|---|------------------------------|--------------------------------|-------------------------------------|---|--|
| Flight Procedures Cover Page | Task Action: P-NOTAM | Task Type: IAP | Estimated Chart Date: 11/05/2020 | APWS Task ID: 91B98BC9BB264997B50B47ED4C46C43F | APWS Project ID: 0F0FCDCBE1594470BEDA2DA24A2D76C1 |
| Procedure: RNAV (GPS) RWY 17 AMDT 2A | | Enroute: NO | Specialist: Barnett, Georgette | | Agreement Number: |
| Airport ID: KOWI | Airport Name: OTTAWA MUNI | | Airport City: OTTAWA | | State: KS |
| Facility ID: | Facility Type: | Flight Inspection Remark Type: | | | |
| <p>Procedure Comments:</p> <p>P-NOTAM</p> <p>THIS CANCELS FDC 0/8976</p> <p>PROCESSED IAW AIRCRAFT OPERATIONS GROUP (AJF-10) MEMO, APRIL 29, 2020, SUBJECT: FLIGHT INSPECTION REVIEW NOT REQUIRED.</p> <p>CONTACT JOHN BORDY, MANAGER AJV-A421 (405) 954-0980</p> | | | | | |

J ZEDER 08/20/2020



| | | |
|--|------------------------|---|
| WAAS CH 86726 W17A | APP CRS 176° | Rwy Idg 4500 TDZE 964 Apt Elev 966 |
|--|------------------------|---|

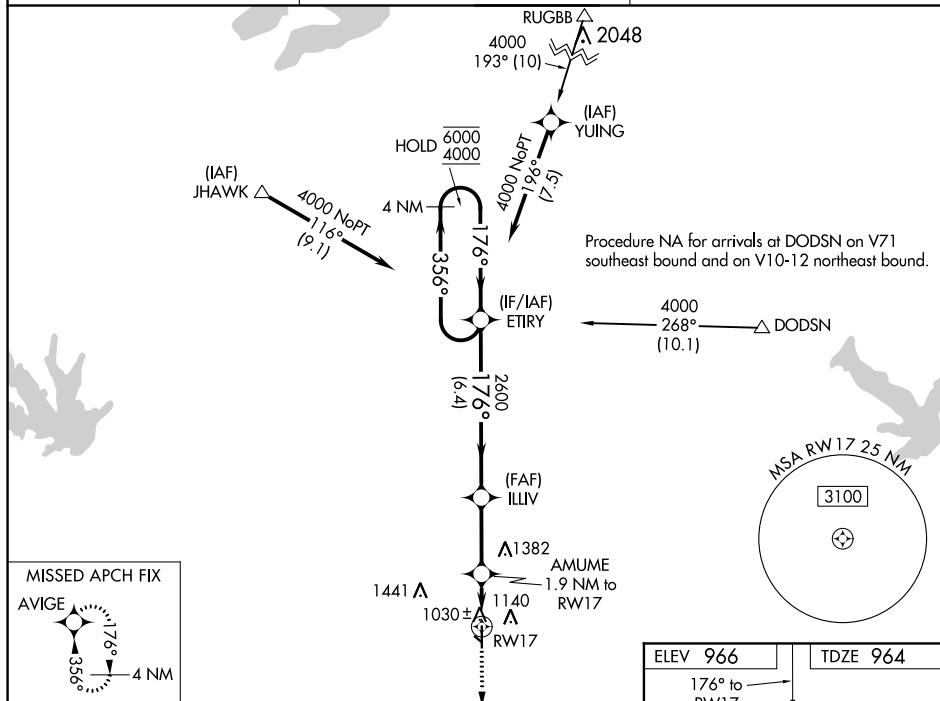
RNAV (GPS) RWY 17
OTTAWA MUNI (OWI)

RNP APCH.

- T** Circling NA to Rwy 13 and 31. Rwy 17 helicopter visibility reduction below $\frac{3}{4}$ SM NA.
A For uncompensated Baro-VNAV systems, LNAV/VNAV NA below -16°C or above 54°C.

MISSED APPROACH: Climb to 4000 direct AVIGE and hold, continue climb-in-hold to 4000.

| | | |
|-------------------------|---|---------------------------------|
| AWOS-3 118.25 | KANSAS CITY CENTER 127.725 270.25 | UNICOM 122.8 (CTAF) ① |
|-------------------------|---|---------------------------------|



4 NM Holding Pattern

6000 ← 356°

4000 → 176°

GP 3.25° TCH 40

ETIRY

ILLIV 2600

AMUME 1.9 NM to RW17

*LNAV only

*0.8 NM to RW17

RW17

*1640

6.4 NM

2.7 NM

1.1 NM

0.8 NM

| CATEGORY | A | B | C | D |
|-------------------|----------|---------------|-------------------------------|----|
| LPV DA | 1214-3/4 | 250 (300-3/4) | | NA |
| LNAV/VNAV DA | 1214-3/4 | 250 (300-3/4) | | NA |
| LNAV MDA | 1280-1 | 316 (400-1) | | NA |
| C CIRCLING | 1500-1 | 534 (600-1) | 1760-2 1/4 794 (800-2 1/4) | NA |

