

FEDERAL AVIATION ADMINISTRATION  
FLIGHT STANDARDS SERVICE  
STANDARD TERMINAL ARRIVAL (STAR)

Bearings, headings, courses, tracks and radials are magnetic. Elevations and altitudes are in feet, MSL. Altitudes are minimum altitudes unless otherwise indicated.  
Distances are in nautical miles (NM). Graphic depictions attached.

Arrival Name CHSLY (RNAV)	Number FIVE	STAR Computer Code CHSLY.CHSLY5	Superseded Number FOUR	Dated 01/03/2019	Effective Date				
TRANSITION ROUTES:									
Transition Name	Transition Computer Codes	From FIX/NAVAID	To FIX/NAVAID	Mag Course	Distance	MEA	MOCA	MAA	Crossing Altitudes / Fixes
COUPN	COUPN.CHSLY5	COUPN	COUPN						
			ARGAL	247.12	64.61	16000	2500		
			PELTS	267.35	62.66	16000	2900		
			FEDOX	271.38	08.39	16000	2900		
			SHANZ	271.54	04.34	15000	2200		
			SDAIL	271.52	05.85	13000	2900		BETWEEN 17000 AND FL230
			WLLSH	264.66	19.40	13000	3100		AT/ABOVE 16000
			CHSLY	259.15	11.10	13000	2900		BETWEEN 13000 AND FL220
LYNCHBURG	LYH.CHSLY5	LYH VOR/DME	LYH VOR/DME						
			BEMOH	221.09	17.12	FL180	4000		
			WRLLD	221.17	15.56	FL180	4000		
			BLUEJ	221.02	22.05	17000	4000		AT/ABOVE FL270
			BURRZ	220.86	11.63	15000	3800		BETWEEN FL240 AND FL270
			SKLES	220.76	05.50	13000	3400		AT/ABOVE FL220
			DENTT	220.73	19.68	13000	3500		AT/ABOVE 16000
			BOOTS	220.61	08.10	13000	3000		BETWEEN 13000 AND FL230
			CHSLY	220.51	03.00	13000	2200		BETWEEN 13000 AND FL220
NUUMN	NUUMN.CHSLY5	NUUMN	NUUMN						
			SDAIL	246.00	23.86	13000	2900		BETWEEN 17000 AND FL230
			WLLSH	264.66	19.40	13000	3100		AT/ABOVE 16000
			CHSLY	259.15	11.10	13000	2900		BETWEEN 13000 AND FL220
SDAIL	SDAIL.CHSLY5	SDAIL	SDAIL						BETWEEN 17000 AND FL230
			WLLSH	264.66	19.40	13000	3100		AT/ABOVE 16000
			CHSLY	259.15	11.10	13000	2900		BETWEEN 13000 AND FL220

QUALITY  
14  
CHECKED

FEDERAL AVIATION ADMINISTRATION  
FLIGHT STANDARDS SERVICE  
STANDARD TERMINAL ARRIVAL (STAR)

Bearings, headings, courses, tracks and radials are magnetic. Elevations and altitudes are in feet, MSL. Altitudes are minimum altitudes unless otherwise indicated.  
Distances are in nautical miles (NM). Graphic depictions attached.

Arrival Name	Number	STAR Computer Code	Superseded Number	Dated	Effective Date
<b>CHSLY (RNAV)</b>	<b>FIVE</b>	<b>CHSLY.CHSLY5</b>	<b>FOUR</b>	<b>01/03/2019</b>	

ARRIVAL ROUTE DESCRIPTION:

FROM CHSLY ON TRACK 225.20/6.44 TO CROSS KRISS AT OR ABOVE 11000, THEN ON TRACK 210.73/3.79 TO CROSS SLPOH BETWEEN 10000 AND FL210.

LANDING RWY 36R/C/L, 05: FROM SLPOH ON TRACK 218.80/10.35 TO CROSS JAMGO BETWEEN 10000 AND 16000 AND AT 250 KIAS, THEN ON TRACK 218.39/8.35 TO CROSS WHIZE BETWEEN 9000 AND 12000, THEN ON TRACK 218.34/9.94 TO CROSS CAATT AT 9000 AND AT 210 KIAS, THEN ON TRACK 183.08/12.00 TO CROSS EPAYE AT 6000 AND AT 210 KIAS, THEN ON TRACK 183.08. EXPECT RADAR VECTORS TO FINAL APPROACH COURSE.

LANDING RWY 18R/C/L: FROM SLPOH ON TRACK 201.26/7.43 TO CROSS NODEW BETWEEN 8000 AND 9000 AND AT 230 KIAS, THEN ON TRACK 276.25/10.01 TO CROSS HEELZ AT 6000 AND AT 210 KIAS, THEN ON TRACK 270.00. EXPECT RADAR VECTORS TO FINAL APPROACH COURSE.

LANDING RWY 23: FROM SLPOH ON TRACK 201.26/7.43 TO CROSS NODEW BETWEEN 8000 AND 9000 AND AT 230 KIAS, THEN ON TRACK 201.24/6.81 TO CROSS BLNCO AT OR ABOVE 7000, THEN ON TRACK 235.67/3.98 TO CROSS JEPHS AT OR ABOVE 6000. EXPECT ILS OR LOC RWY 23 APPROACH.

PROCEDURAL DATA NOTES:

NOTE: RADAR REQUIRED

NOTE: RNAV 1

NOTE: DME/DME/IRU OR GPS REQUIRED

NOTE: TURBOJET AIRCRAFT ONLY

NOTE: DESCEND VIA MACH NUMBER UNTIL INTERCEPTING 280 KIAS. MAINTAIN 280 KIAS UNTIL SLOWED BY THE STAR or ASSIGNED BY ATC.

NOTE: EXPECT "DESCEND VIA" CLEARANCE AND LANDING DIRECTION ASSIGNMENT (NORTH or SOUTH) BY ARTCC. FOR VERTICAL NAVIGATION PLANNING, LANDING SOUTH, SELECT RWY 18L, LANDING NORTH, SELECT RWY 36R.

NOTE: NUUMN TRANSITION ATC ASSIGNED ONLY.

NOTE: CLT APPROACH WILL ASSIGN LANDING RUNWAY.

NOTE: CAUTION: PARACHUTE JUMPING 3 NM S SLPOH, 5 NM RADIUS KRUQ (MID-CAROLINA RGNL), AOB 14,500 MSL (SR-SS).

NOTE: CHART NOTE at HEELZ: LANDING SOUTH RUNWAYS 18 L/C/R: EXPECT RADAR VECTORS TO FINAL APPROACH COURSE AFTER HEELZ.

NOTE: CHART NOTE at EPAYE: LANDING NORTH RUNWAYS 5, 36 L/C/R: EXPECT RADAR VECTORS TO FINAL APPROACH COURSE AFTER EPAYE.

NOTE: LANDING SOUTH RWY23: INTERCEPT LOCALIZER OR AS ASSIGNED BY ATC AFTER JEPHS.

FIXES AND/OR HOLDING PATTERNS:

CHART HOLDING AT BLUEJ: HOLD NE, RT, 221.02 INBOUND, 10 NM LEGS.

CHART HOLDING AT CHSLY: HOLD NE, LT, 220.51 INBOUND, 10 NM LEGS.

CHART HOLDING AT FEDOX: HOLD E, RT, 271.38 INBOUND, 10 NM LEGS.

CHART HOLDING AT PELTS: HOLD E, RT, 267.35 INBOUND, 10 NM LEGS.

CHART HOLDING AT WRLLD: HOLD NE, RT, 221.17 INBOUND, 10 NM LEGS.

COMMUNICATIONS:

CHARLOTTE APP CON, CHARLOTTE ARR ATIS.

AIRPORTS SERVED:

CHARLOTTE/DOUGLAS INTL (KCLT), CHARLOTTE, NC

LOST COMMUNICATIONS PROCEDURE:



FEDERAL AVIATION ADMINISTRATION  
FLIGHT STANDARDS SERVICE  
STANDARD TERMINAL ARRIVAL (STAR)

Bearings, headings, courses, tracks and radials are magnetic. Elevations and altitudes are in feet, MSL. Altitudes are minimum altitudes unless otherwise indicated.  
Distances are in nautical miles (NM). Graphic depictions attached.

Arrival Name	Number	STAR Computer Code	Superseded Number	Dated	Effective Date
<b>CHSLY (RNAV)</b>	<b>FIVE</b>	<b>CHSLY.CHSLY5</b>	<b>FOUR</b>	<b>01/03/2019</b>	

**REMARKS:**  
ABBREVIATED AMDT; DOES NOT QUALIFY AS A PERIODIC REVIEW.

**ADDITIONAL FLIGHT DATA:**

DME/DME ASSESSMENT: SAT (RNP 2.0)  
REFERENCE MAGNETIC VARIATION = KCLT 07W/2000

**FLIGHT INSPECTED BY:**

FLIGHT INSPECTION REVIEW NOT REQUIRED - PROCESSED IAW  
AIRCRAFT OPERATIONS GROUP (AJW-33) MEMO, APRIL 29, 2020

AJW-333  
Organization

Date

*Digitally signed by*  
**DAVID DANNER**

Jun 28, 2021

Signature

*Digitally signed by*  
**DAVID DANNER**  
Jun 28, 2021

**DEVELOPED BY:**

DAN POWELL

Name

AJV-A442

Organization

06/22/2021

Date

*Digitally signed by*  
**DAVID DANNER**

Jun 28, 2021

Signature

Signature

**APPROVED BY:**

PAT MULQUEEN, MANAGER

Name

AJV-A440

Organization

Date

**CHANGES:**

1. EDITED VERTICAL NAV PLANNING NOTE: CHANGED SELECT RWY 23 TO RWY 18L.
2. EDITED PARACHUTE JUMP AREA NOTE: MAX ALT CHANGED FROM AOB 10500 TO AOB 14500.
3. REMOVED RECOMMENDED NAVAID FROM 17.2.

**REASONS:**

- 1, 2. ATC REQUEST TO INCREASE SAFETY.
3. NO LONGER REQUIRED.



FEDERAL AVIATION ADMINISTRATION  
FLIGHT STANDARDS SERVICE  
STANDARD TERMINAL ARRIVAL (STAR)

Bearings, headings, courses, tracks and radials are magnetic. Elevations and altitudes are in feet, MSL. Altitudes are minimum altitudes unless otherwise indicated.  
Distances are in nautical miles (NM). Graphic depictions attached.

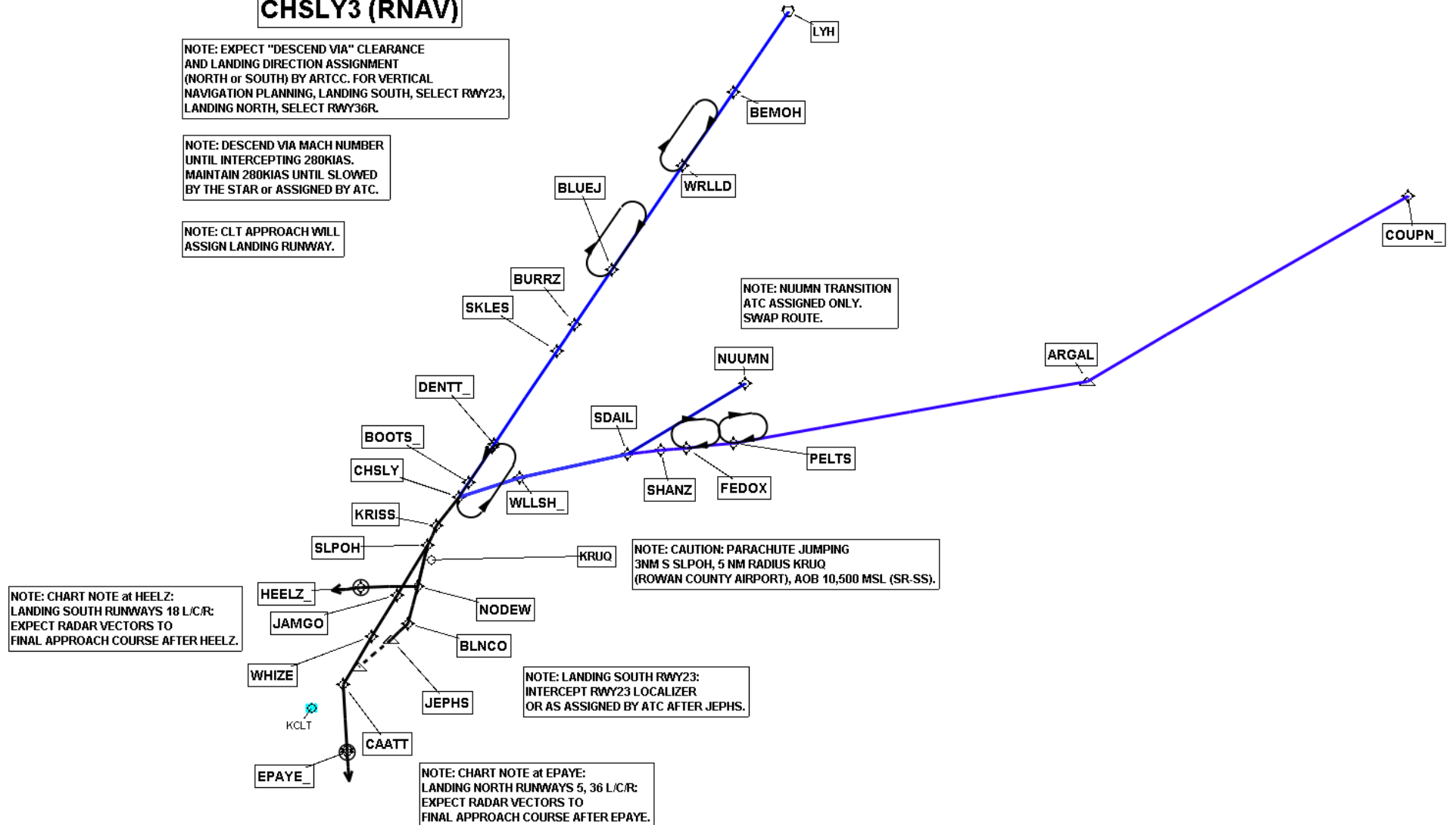
Arrival Name	Number	STAR Computer Code	Superseded Number	Dated	Effective Date
CHSLY (RNAV)	FIVE	CHSLY.CHSLY5	FOUR	01/03/2019	
Graphic Depiction 1					

**CHSLY3 (RNAV)**

NOTE: EXPECT "DESCEND VIA" CLEARANCE AND LANDING DIRECTION ASSIGNMENT (NORTH or SOUTH) BY ARTCC. FOR VERTICAL NAVIGATION PLANNING, LANDING SOUTH, SELECT RWY23, LANDING NORTH, SELECT RWY36R.

NOTE: DESCEND VIA MACH NUMBER UNTIL INTERCEPTING 280KIAS. MAINTAIN 280KIAS UNTIL SLOWED BY THE STAR or ASSIGNED BY ATC.

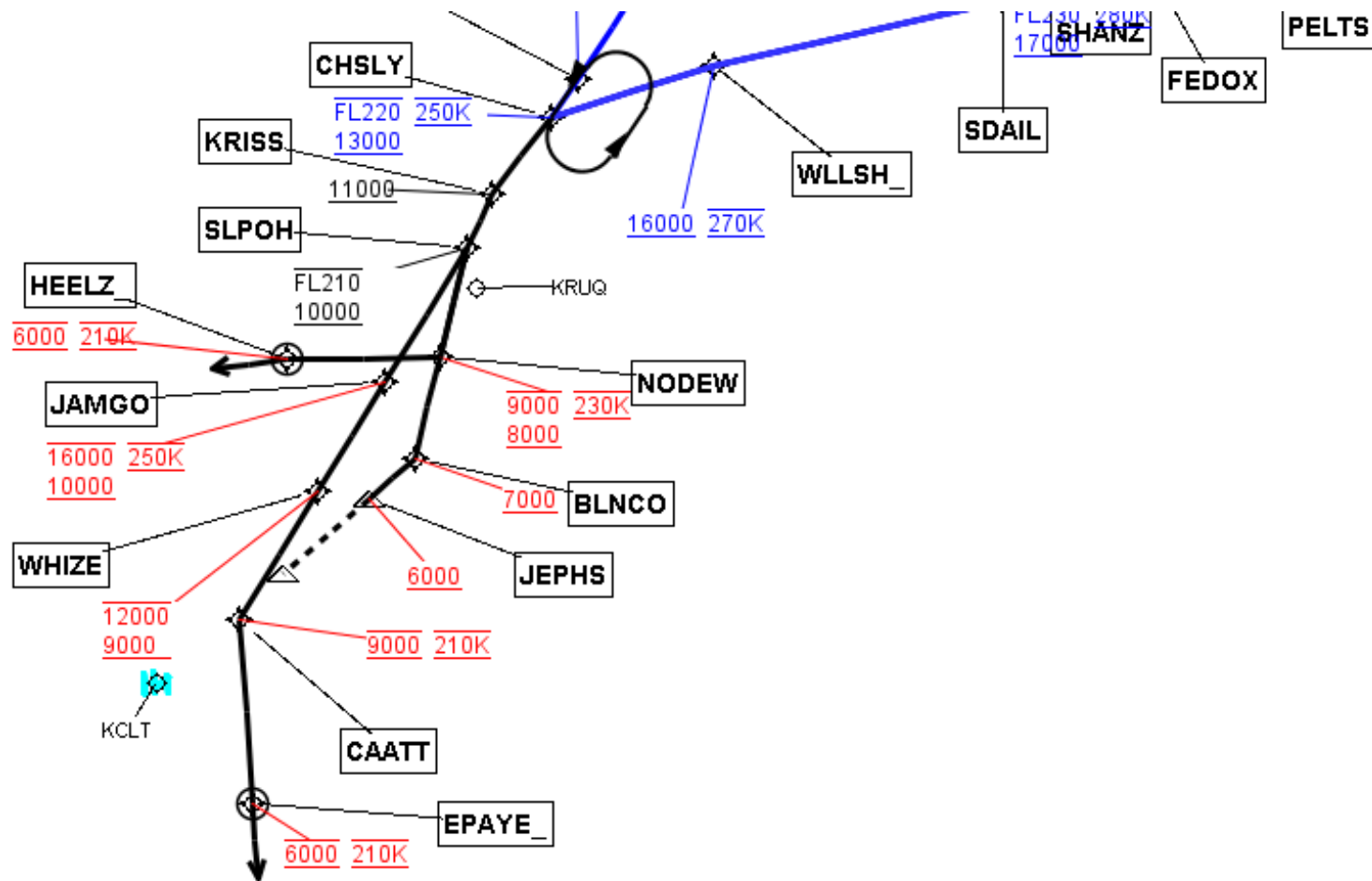
NOTE: CLT APPROACH WILL ASSIGN LANDING RUNWAY.



FEDERAL AVIATION ADMINISTRATION  
FLIGHT STANDARDS SERVICE  
STANDARD TERMINAL ARRIVAL (STAR)

Bearings, headings, courses, tracks and radials are magnetic. Elevations and altitudes are in feet, MSL. Altitudes are minimum altitudes unless otherwise indicated.  
Distances are in nautical miles (NM). Graphic depictions attached.

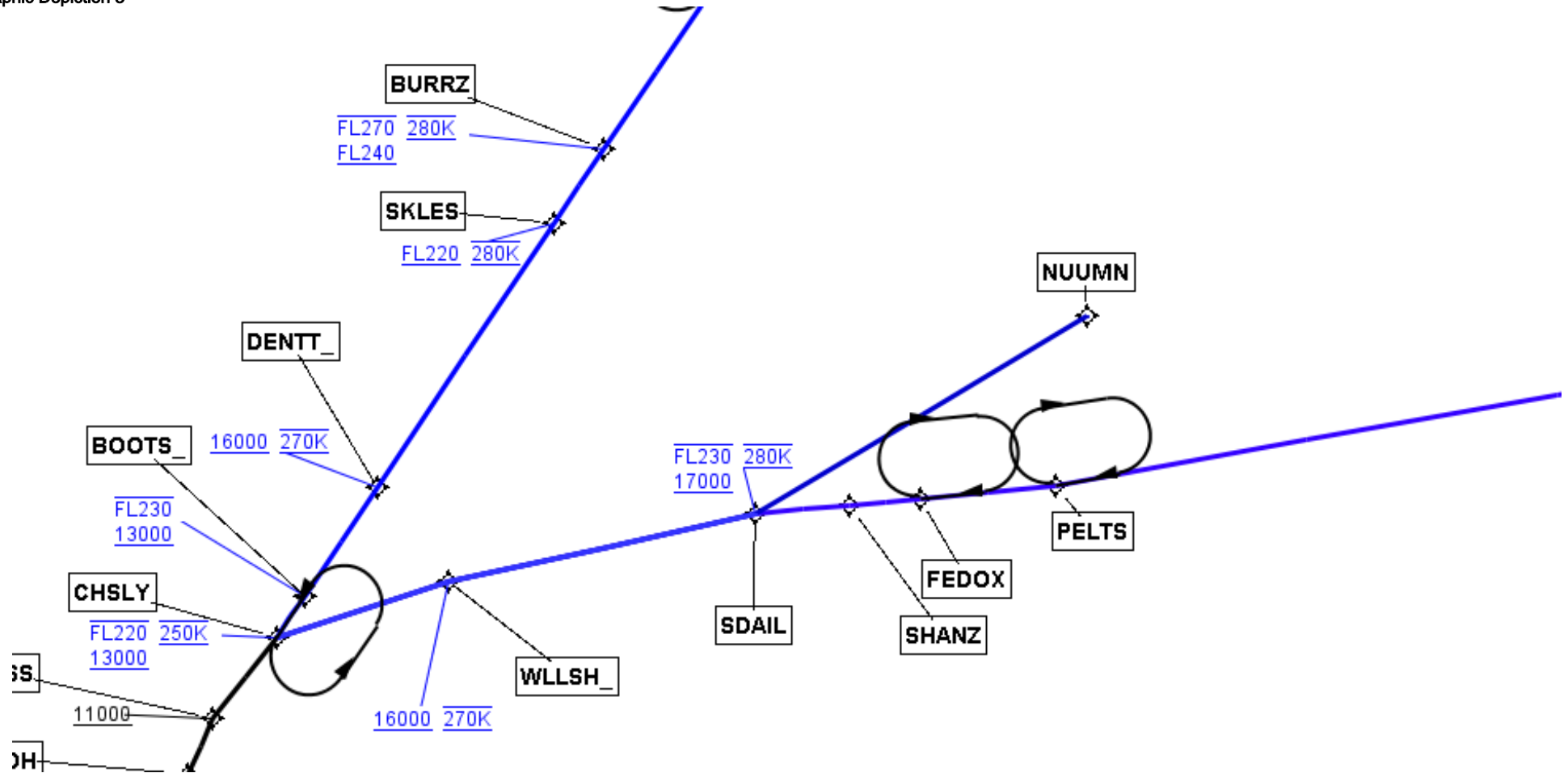
Arrival Name	Number	STAR Computer Code	Superseded Number	Dated	Effective Date
CHSLY (RNAV)	FIVE	CHSLY.CHSLY5	FOUR	01/03/2019	
Graphic Depiction 2					



FEDERAL AVIATION ADMINISTRATION  
FLIGHT STANDARDS SERVICE  
STANDARD TERMINAL ARRIVAL (STAR)

Bearings, headings, courses, tracks and radials are magnetic. Elevations and altitudes are in feet, MSL. Altitudes are minimum altitudes unless otherwise indicated.  
Distances are in nautical miles (NM). Graphic depictions attached.

Arrival Name	Number	STAR Computer Code	Superseded Number	Dated	Effective Date
CHSLY (RNAV)	FIVE	CHSLY.CHSLY5	FOUR	01/03/2019	
Graphic Depiction 3					



FEDERAL AVIATION ADMINISTRATION  
FLIGHT STANDARDS SERVICE  
STAR (DATA RECORD)

Arrival Name CHSLY (RNAV)	Number FIVE	STAR Computer Code CHSLY.CHSLY5	Superseded Number FOUR	Dated 01/03/2019	Effective Date				
FIX/NAVAID	LAT/LONG	C	FO/FB	LEG TYPE	TC	DIST (NM)	ALTITUDE	SPEED	REMARKS
En Route Transition									
COUPN	364250.83N / 0770044.04W	Y		IF					COUPN.CHSLY5
ARGAL	361016.63N / 0780955.31W	Y	FB	TF	240.12	64.61			
PELTS	355921.35N / 0792602.35W	Y	FB	TF	260.35	62.66			
FEDOX	355831.50N / 0793619.66W	Y	FB	TF	264.38	08.39			
SHANZ	355806.56N / 0794139.23W	Y	FB	TF	264.54	04.34			
SDAIL	355732.76N / 0794849.98W	Y	FB	TF	264.52	05.85	17000BFL230	AT 280K	
WLLSH	355321.38N / 0801209.65W	Y	FB	TF	257.66	19.40	AT/ABOVE 16000	AT 270K	
CHSLY	354956.17N / 0802509.43W	Y	FB	TF	252.15	11.10	13000BFL220	AT 250K	
En Route Transition									
LYH VOR/DME	371516.48N / 0791410.97W	Y		IF					LYH.CHSLY5
BEMOH	370104.39N / 0792609.73W	Y	FB	TF	214.09	17.12			
WRLLD	364810.44N / 0793702.65W	Y	FB	TF	214.17	15.56			
BLUEJ	362951.50N / 0795220.48W	Y	FB	TF	214.02	22.05	AT/ABOVE FL270		
BURRZ	362011.05N / 0800021.64W	Y	FB	TF	213.86	11.63	FL240BFL270	AT 280K	
SKLES	361536.24N / 0800408.37W	Y	FB	TF	213.76	05.50	AT/ABOVE FL220	AT 280K	
DENTT	355911.99N / 0801736.24W	Y	FB	TF	213.73	19.68	AT/ABOVE 16000	AT 270K	
BOOTS	355226.50N / 0802307.22W	Y	FB	TF	213.61	08.10	13000BFL230		
CHSLY	354956.17N / 0802509.43W	Y	FB	TF	213.51	03.00	13000BFL220	AT 250K	
En Route Transition									
NUUMN	360953.78N / 0792338.70W	Y		IF					NUUMN.CHSLY5
SDAIL	355732.76N / 0794849.98W	Y	FB	TF	239.00	23.86	17000BFL230	AT 280K	
WLLSH	355321.38N / 0801209.65W	Y	FB	TF	257.66	19.40	AT/ABOVE 16000	AT 270K	
CHSLY	354956.17N / 0802509.43W	Y	FB	TF	252.15	11.10	13000BFL220	AT 250K	

FEDERAL AVIATION ADMINISTRATION  
FLIGHT STANDARDS SERVICE  
STAR (DATA RECORD)

Arrival Name CHSLY (RNAV)	Number FIVE	STAR Computer Code CHSLY.CHSLY5		Superseded Number FOUR		Dated 01/03/2019		Effective Date	
FIX/NAVAID	LAT/LONG	C	FO/FB	LEG TYPE	TC	DIST (NM)	ALTITUDE	SPEED	REMARKS
En Route Transition									
SDAIL	355732.76N / 0794849.98W	Y		IF			17000BFL230	AT 280K	SDAIL.CHSLY5
WLLSH	355321.38N / 0801209.65W	Y	FB	TF	257.66	19.40	AT/ABOVE 16000	AT 270K	
CHSLY	354956.17N / 0802509.43W	Y	FB	TF	252.15	11.10	13000BFL220	AT 250K	
Common Route									
CHSLY	354956.17N / 0802509.43W	Y		IF			13000BFL220	AT 250K	CHSLY.CHSLY5
KRISS	354452.11N / 0803002.82W	Y	FB	TF	218.20	06.44	AT/ABOVE 11000		
SLPOH	354123.61N / 0803155.16W	Y	FB	TF	203.73	03.79	10000BFL210		
Runway Transition									
SLPOH	354123.61N / 0803155.16W	Y		IF			10000BFL210		
JAMGO	353234.84N / 0803836.23W	Y	FB	TF	211.80	10.35	10000B16000	AT 250K	
WHIZE	352526.54N / 0804355.47W	Y	FB	TF	211.39	08.35	9000B12000		
CAATT	351656.00N / 0805014.48W	Y	FB	TF	211.34	09.94	AT 9000	AT 210K	
EPAYE	350456.54N / 0804914.43W	Y	FO	TF	176.08	12.00	AT 6000	AT 210K	
KCLT:RWY 05,RWY 36C,RWY 36L,RWY 36R				FM	176.08				
Runway Transition									
SLPOH	354123.61N / 0803155.16W	Y		IF			10000BFL210		
NODEW	353410.88N / 0803409.81W	Y	FB	TF	194.26	07.43	8000B9000	AT 230K	
HEELZ	353402.34N / 0804626.00W	Y	FO	TF	269.25	10.01	AT 6000	AT 210K	
KCLT:RWY 18C,RWY 18L,RWY 18R				FM	263.00				
Runway Transition									
SLPOH	354123.61N / 0803155.16W	Y		IF			10000BFL210		
NODEW	353410.88N / 0803409.81W	Y	FB	TF	194.26	07.43	8000B9000	AT 230K	



FEDERAL AVIATION ADMINISTRATION  
FLIGHT STANDARDS SERVICE  
STAR (DATA RECORD)

Arrival Name		Number		STAR Computer Code		Superseded Number		Dated		Effective Date	
CHSLY (RNAV)		FIVE		CHSLY.CHSLY5		FOUR		01/03/2019			
FIX/NAVAID	LAT/LONG	C	FO/FB	LEG TYPE	TC	DIST (NM)	ALTITUDE	SPEED	REMARKS		
BLNCO	352734.01N / 0803612.93W	Y	FB	TF	194.24	06.81	AT/ABOVE 7000				
JEPHS	352455.89N / 0803952.48W	Y	FB	TF	228.67	03.98	AT/ABOVE 6000				
KCLT:RWY 23											