

Flight Procedures Cover Page	Task Action: Amendment	Task Type: SID	Estimated Chart Date: 06/17/2021	APWS Task ID: 9098611E5EB44B1CBC3D1F2BEA5733C5	APWS Project ID: D16DC50424064C66AD27F521BB71BA0E
Procedure: SID OSHNN (RNAV) ONE		Enroute: YES	Specialist: Martinelli, Tara		Agreement Number:
Airport ID: KLAX		Airport City: LOS ANGELES			State: CA
Facility ID:	Facility Type:	Flight Inspection Remark Type:			
<p>Procedure Comments: ABBREVIATED AMENDMENT</p> <p>AMEND: SID OSHNN (RNAV) - REMOVED THE HAILO, LAS VEGAS AND NNAVY TRANSITON.</p> <p>PROCESSED IAW AIRCRAFT OPERATIONS GROUP (AJF-10) MEMO, APRIL 29, 2020 SUBJECT: FLIGHT INSPECTION REVIEW NOT REQUIRED.</p> <p>CONTACT DON LANIER, AJV-A431 405-495-8242.</p>					

QUALITY
41
CHECKED

QUALITY
5
CHECKED

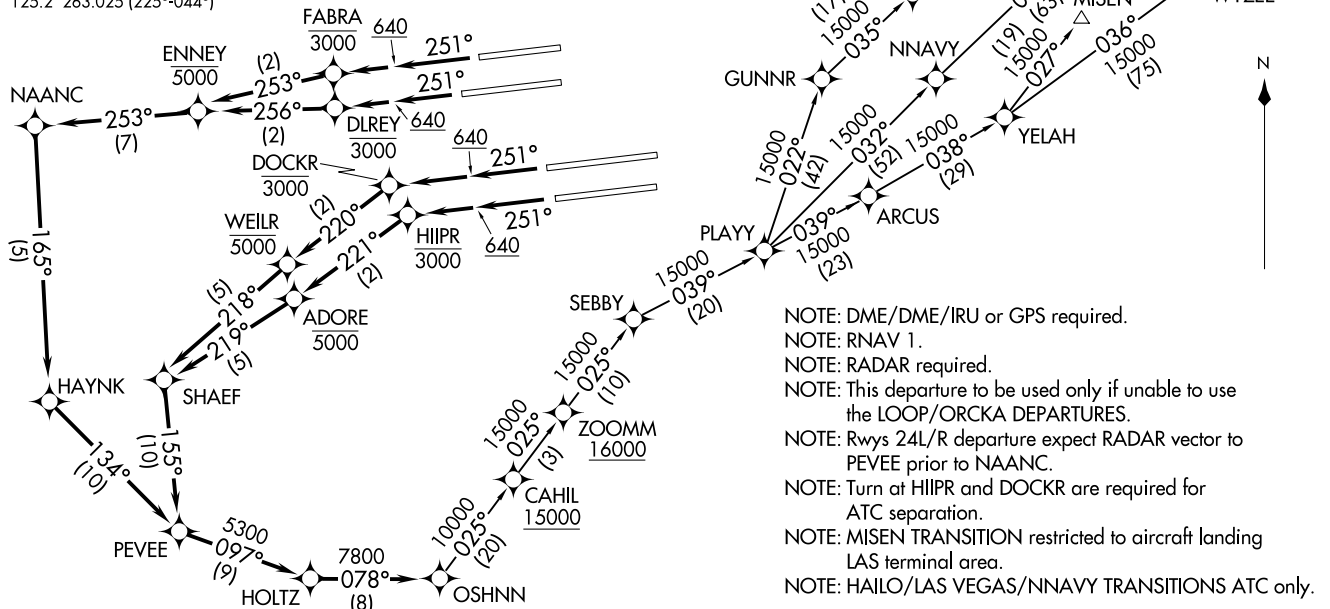
TOP ALTITUDE:
17000

TAKEOFF MINIMUMS

Rwys 6L/R, 7L/R: NA-ATC.

Rwys 24L/R, 25L/R: Standard with minimum climb of 500' per NM to 640.

D-ATIS DEP
135.65
CLNC DEL
120.35 327.0
CPDLC
GND CON
(N) 121.65 327.0
(S) 121.75 327.0
(W) 121.4 327.0
LOS ANGELES TOWER
(N) 133.9 239.3
(S) 120.95 379.1
SOCAL DEP CON
124.3 363.2 (045°-224°)
125.2 263.025 (225°-044°)



NOTE: DME/DME/IRU or GPS required.

NOTE: RNAV 1.

NOTE: RADAR required.

NOTE: This departure to be used only if unable to use the LOOP/ORCKA DEPARTURES.

NOTE: Rwys 24L/R departure expect RADAR vector to PEVEE prior to NAANC.

NOTE: Turn at HIIPR and DOCKR are required for ATC separation.

NOTE: MISEN TRANSITION restricted to aircraft landing LAS terminal area.

NOTE: HAILO/LAS VEGAS/NNNAVY TRANSITIONS ATC only.

(NARRATIVE ON FOLLOWING PAGE)

NOTE: Chart not to scale.



DEPARTURE ROUTE DESCRIPTION

TAKEOFF RUNWAY 24L: Climb on heading 251° to 640, then climb direct to cross DLREY at or below 3000, then on track 256° to cross ENNEY at or below 5000, then on depicted route to OSHNN, thence. . . .

TAKEOFF RUNWAY 24R: Climb on heading 251° to 640, then climb direct to cross FABRA at or below 3000, then on track 253° to cross ENNEY at or below 5000, then on depicted route to OSHNN, thence. . . .

TAKEOFF RUNWAY 25L: Climb on heading 251° to 640, then climb direct to cross HIIPR at or below 3000, then on track 221° to cross ADORE at or below 5000, then on depicted route to OSHNN, thence. . . .

TAKEOFF RUNWAY 25R: Climb on heading 251° to 640, then climb direct to cross DOCKR at or below 3000, then on track 220° to cross WEILR at or below 5000, then on depicted route to OSHNN, thence. . . .

. . . .on (transition). Maintain 17000. Expect filed altitude five minutes after departure.

BEALE TRANSITION (OSHNN9.BEALE)

HAILO TRANSITION (OSHNN9.HAILO)

LAS VEGAS TRANSITION (OSHNN9.LAS)

MISEN TRANSITION (OSHNN9.MISEN)

NNAVY TRANSITION (OSHNN9.NNAVY)

SW-3, 03 DEC 2020 to 31 DEC 2020

SW-3, 03 DEC 2020 to 31 DEC 2020

Federal Aviation Administration Categorical Exclusion Declaration

Date: 12/02/20

IFP: Graham, Bob (bob.ctr.graham@faa.gov)

Airport Contact: -

Request ID: KLAX_201110

Single or Multiple Procedure: Multiple

Procedure Name(s): OSHNN ONE RNAV DEPARTURE

Procedure Request Description:

This is an abbreviated amendment. Three enroute transitions are being removed from this procedure: LAS, NNAVY, and HAILO. There are no other changes to routes or altitudes.

Declaration of Exclusion:

The FAA has reviewed the above referenced proposed action and it has been determined, by the undersigned, to be categorically excluded from further environmental documentation according to FAA Order 1050.1, "Environmental Impacts: Policies and Procedures." The implementation of this action will not result in any extraordinary circumstances in accordance with FAA Order 1050.1.

Basis for this Determination:

This review was conducted in accordance with policies and procedures in Department of Transportation Order 5610.1, "Procedures for Considering Environmental Impacts" and FAA Order 1050.1.

The applicable Categorical Exclusion is:

5-6.5.k: Publication of existing air traffic control procedures that do not essentially change existing tracks, create new tracks, change altitude, or change concentration of aircraft on these tracks. (ATO, AVS)

The above flight procedure has been developed within the accepted parameters.

Concurrence/Reviewed By: **VIKAS UBEROI** Digitally signed by VIKAS UBEROI
Date: 2020.12.07 11:15:08 -08'00'

Date: _____

Title: _____

Approved By: **RYAN WADE WELLER** Digitally signed by RYAN WADE WELLER
Date: 2020.12.07 11:10:57 -08'00'

Date: _____

Title: _____