

Flight Procedures Cover Page	Task Action: FLIGHT CHECK	Task Type: IAP	Estimated Chart Date: 06/15/2023	APWS Task ID: 90433D3639A646D4AF15A23D585CC671	APWS Project ID: D6886C3565564B1CA1C8B4456DE42E23
Procedure: RNAV (GPS) RWY 31 AMDT 1		Enroute: NO	Specialist: Smart, Phillip		Agreement Number:
Airport ID: KBPI			Airport City: BIG PINEY		State: WY
Facility ID:	Facility Type:	Flight Inspection Remark Type: New FC Slot			
<div>Procedure Comments:</div> <div>HARD DATE</div> <div>Assigned MAG VAR, BPI VOR/DME: OLD 16E-NEW 10E Assigned MAG VAR, KBPI: OLD 16E-NEW 10E</div> <div>PENDING DATA (6-15-23) USED FOR BPI VOR/DME AND KBPI AIRPORT</div> <div>RUNWAY NUMBERS NOT TO BE CHANGED PER FPT</div> <div>CONTACT CASIMIR TABAKA, Manager AJV-A432, 405.954.7931</div> <div>03/17/2023 THIS IS AN UPDATED COPY OF THE FORM DEVELOPED ON 12/23/2022 CHANGED REQUIRED EFFECTIVE DATE FROM ROUTINE TO 06/15/2023</div> <div>04/14/2023: THIS IS AN CORRECTED COPY OF THE FORM APPROVED ON 03/17/2023 TERMINAL ROUTES: CHANGE CA LEG FROM FO TO BLANK.</div> <div><div>J ZEDER 04/14//2023</div><div>QUALITY 16 CHECKED</div><div>QUALITY 50 CHECKED</div></div>					

OLD

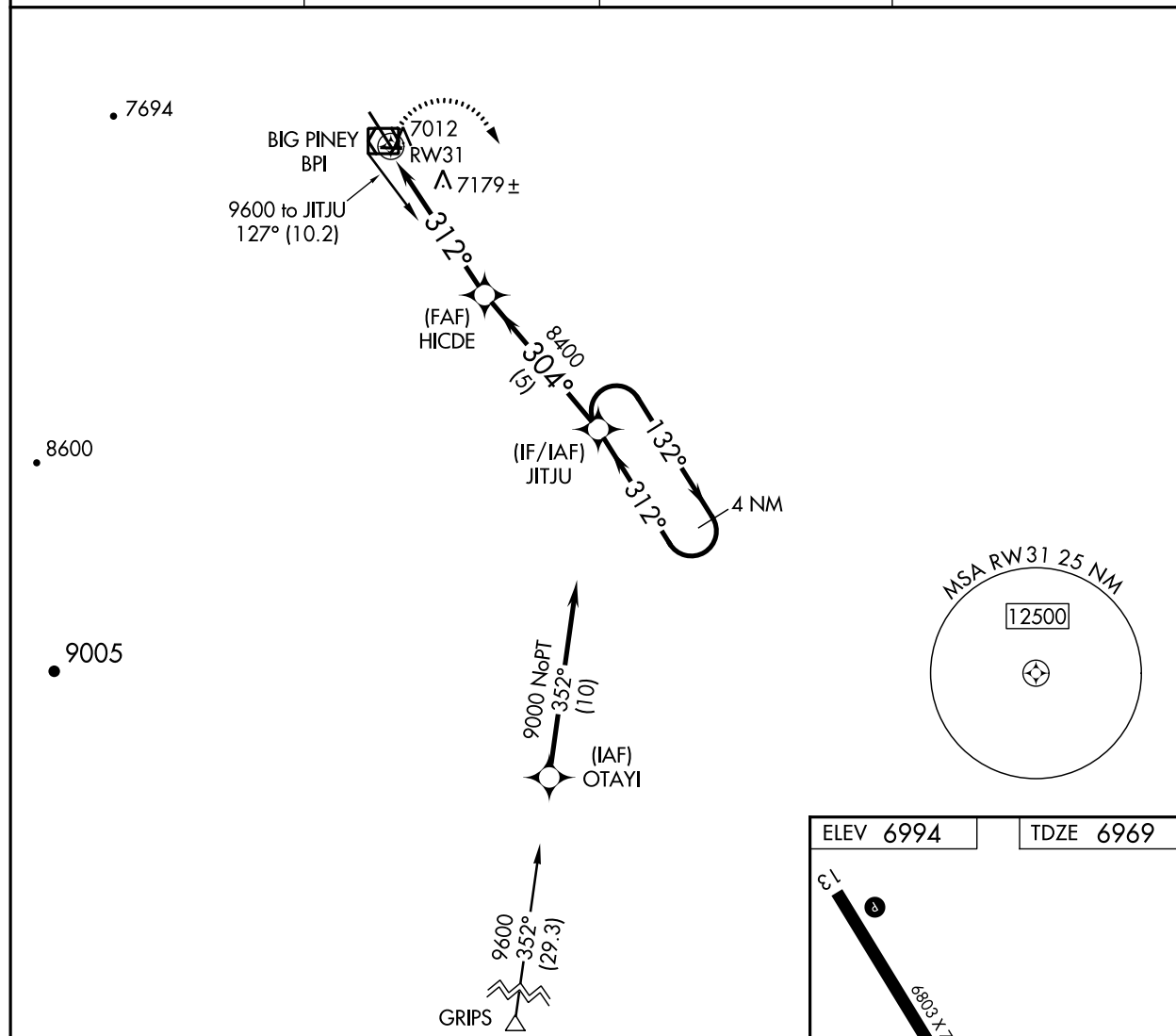
BIG PINEY, WYOMING



22279

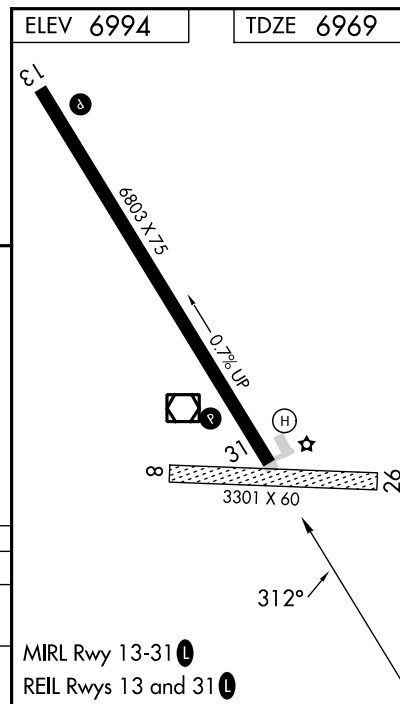
APP CRS	Rwy Idg	6803
312°	TDZE	6969
	Apt Elev	6994

RNAV (GPS) RWY 31 MILEY MEML FLD (BPI)

RNP APCH.		MISSED APPROACH: Climbing right turn to 9000 direct JITJU and hold.	
<div><div></div><div></div><div></div></div> Circling NA to Rwys 8 and 26.			
ASOS 135.225	SALT LAKE CENTER 128.35 239.25	UNICOM 122.8 (CTAF)	122.70



9000	JITJU	VGSi and descent angles not coincident (VGSi Angle 3.00/TCH 33).		
		HICDE	JITJU	4 NM Holding Pattern
RW31		≤ 2.69° TCH 30	304°	132° → 9000
5 NM		5 NM	312°	
CATEGORY	A	B	C	D
LNAV MDA	7440-1	471 (500-1)	7440-1½ 471 (500-1½)	7440-1½ 471 (500-1½)
CIRCLING	7460-1 466 (500-1)	7560-1 566 (600-1)	7800-2¼ 806 (900-2¼)	7820-2¾ 826 (900-2¾)



NW-1, 01 DEC 2022 to 29 DEC 2022

NW-1, 01 DEC 2022 to 29 DEC 2022

BIG PINEY, WYOMING
Orig-E 06OCT22

42°35'N-110°07'W

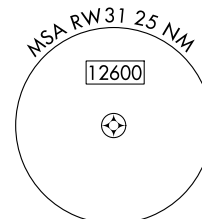
MILEY MEML FLD (BPI)
RNAV (GPS) RWY 31

FIG

RNAV (GPS) RWY 31
MILEY MEML FLD (BPI)

MISSED APPROACH: Climbing right turn to 9000 direct JITU and hold.

PROTOTYPE: NOT
FOR NAVIGATION



ELEV 6994

TDZE 6969

6803 X 75

0.7% UP

3301 X 60

318°

MRL Rwy 13-31

REIL Rwy 13 and 31

AUTOMATED AL-5790 RNAV (GPS) RWY 31

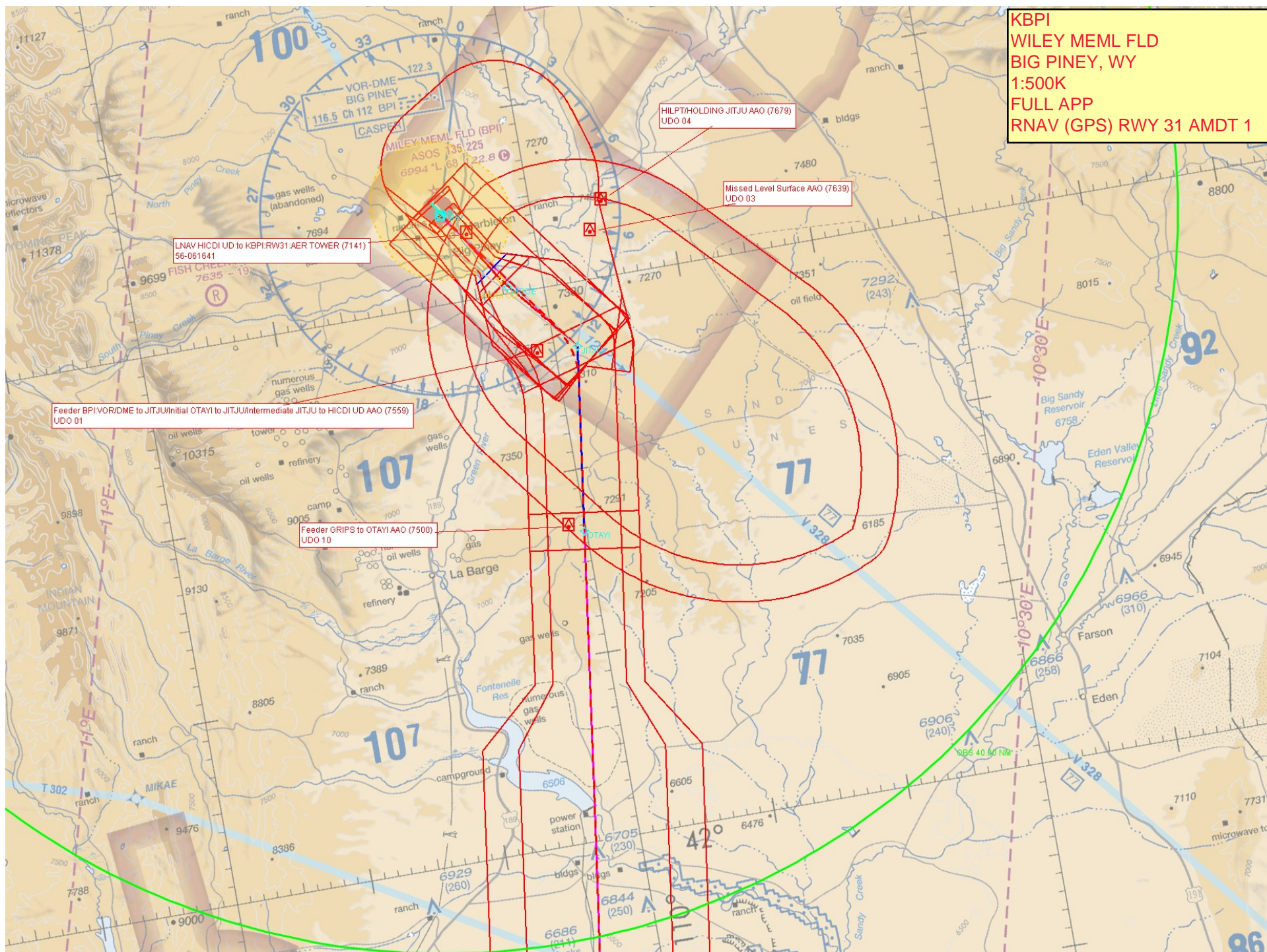
NW-1
21 FEB 2023
COMPILER: CG
REVIEWER:
DBL CHKR:
EFF: FIG

MILEY MEML FLD (BPI)

42°35'N-110°07'W

RNAV (GPS) RWY 31

KBPI
WILEY MEML FLD
BIG PINEY, WY
1:500K
FULL APP
RNAV (GPS) RWY 31 AMDT 1



KBPI
WILEY MEML FLD
BIG PINEY, WY
1:100K
FINAL / MISSED
RNAV (GPS) RWY 31 AMDT 1

