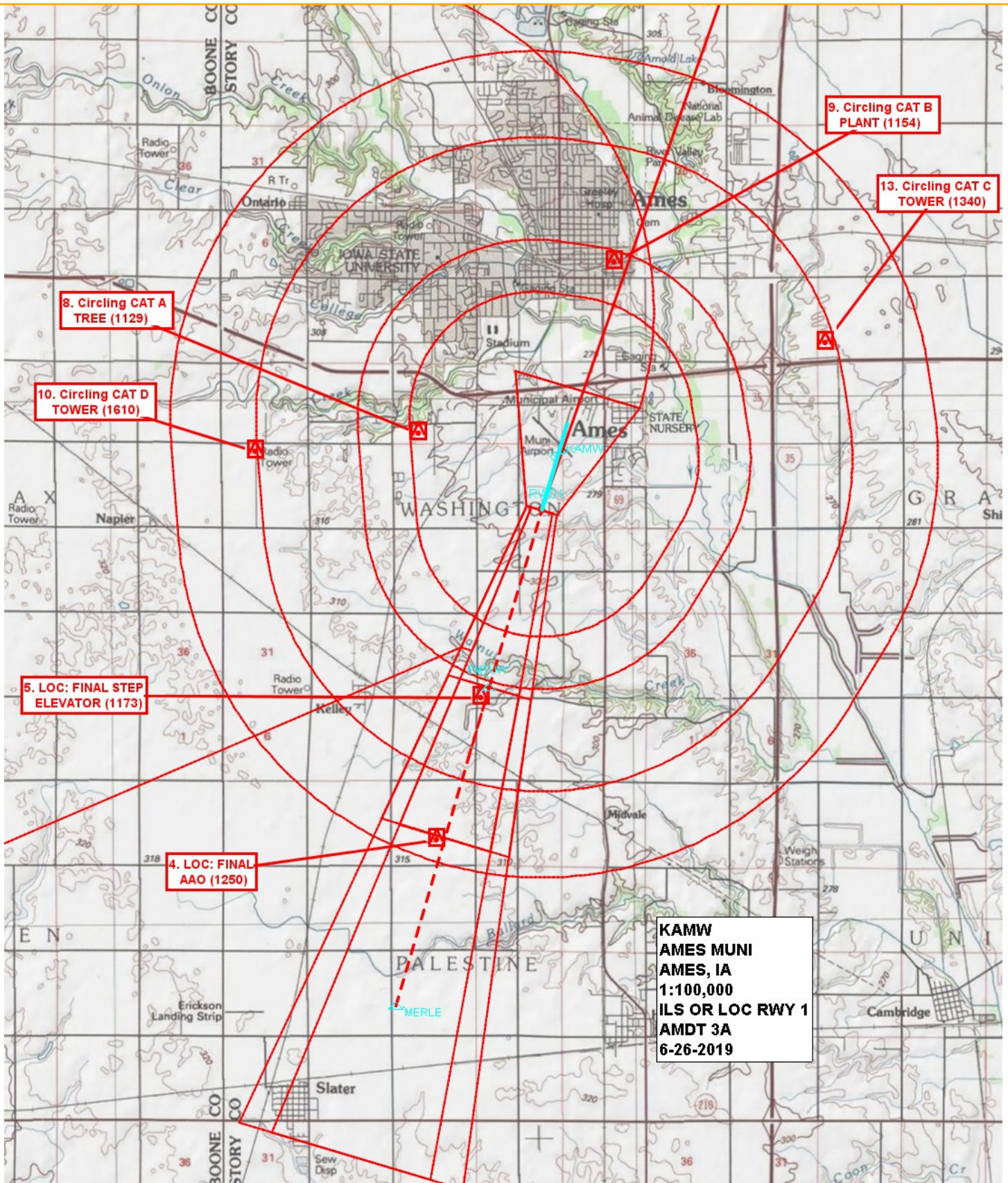


Flight Procedures Cover Page	Task Action: P-NOTAM	Task Type: IAP	Estimated Chart Date: 08/12/2021	APWS Task ID: 8F7ABAF9F5274E2D87F1D41E587BDFD6	APWS Project ID: 8D3D9225C2B1450D8E22E117B60F6827
Procedure: RNAV (GPS) RWY 1 AMDT 2B		Enroute: NO	Specialist: Sickels, Dale		Agreement Number:
Airport ID: KAMW			Airport City: AMES		State: IA
Facility ID:	Facility Type:	Flight Inspection Remark Type:			
<p>Procedure Comments: P-NOTAM</p> <p>CIRCLING RADII INCREASE</p> <p>CONTACT JASON KRETSCHMER, AJV-A421, 405-954-4019</p> <p style="text-align: center;"><i>Digitally signed by</i> JASON KRETSCHMER Jun 10, 2021</p>					


QUALITY
25
CHECKED

QUALITY
38
CHECKED

Map from ILS or LOC Rwy 1 showing Cat A-C circling obstacles.
New circling radii: Cat A 1.30, Cat B 1.84, Cat C 2.89



RNAV (GPS) RWY 1
AMES MUNI (AMW)

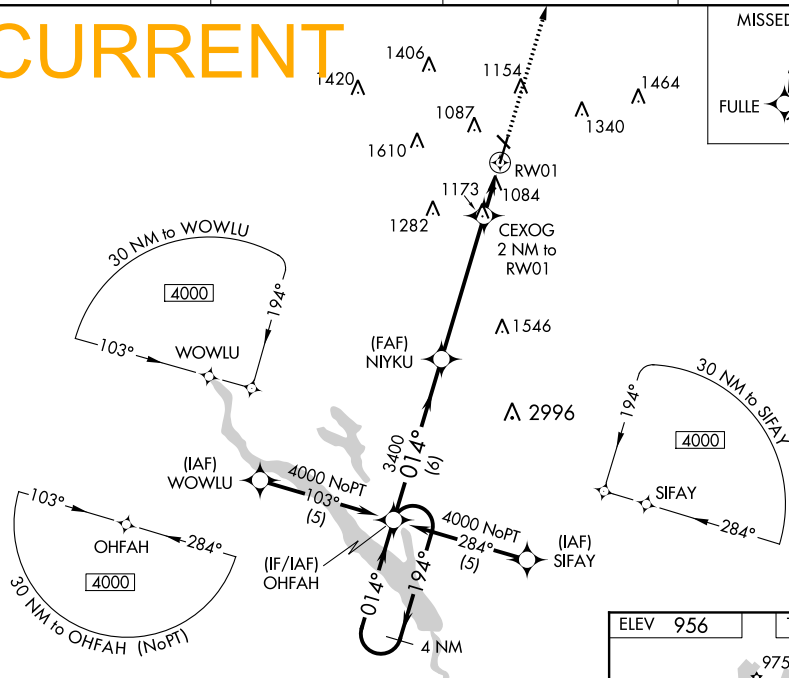
 -27°C For uncompensated Baro-VNAV systems, LNAV/VNAV NA below -16°C (4°F) or above 54°C (130°F). For inop MALSR, increase LNAV Cats A, B visibility to 1 mile. Circling Rwy 31 NA at night.

MALSR

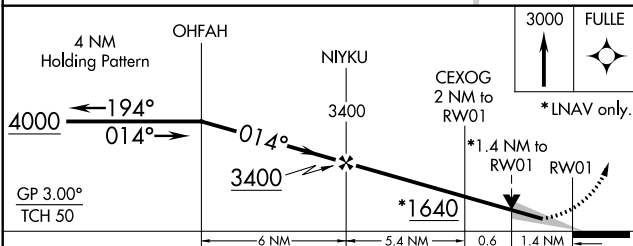
MISSED APPROACH: Climb to 3000
direct FULLE and hold.

ASOS 132.025	DES MOINES APP CON 123.9 307.15	CLNC DEL 126.0	UNICOM 122.7 (CTAF)
------------------------	---	--	---

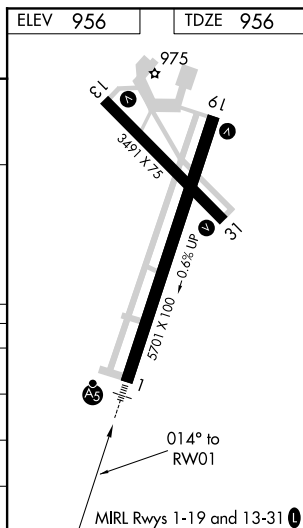
CURRENT



MISSED APCH FIX



CATEGORY		A	B	C	D
LPV	DA	1261 ^{-3/4} 305 (400 ^{-3/4})			NA
LNAV/ VNAV	DA	1364-1 408 (500-1)			NA
LNAV	MDA	1440 ^{-3/4} 484 (500 ^{-3/4})			NA
CIRCLING		1440-1 484 (500-1)		1460-1 ^{1/2} 504 (600-1 ^{1/2})	NA



NC-3, 22 APR 2021 to 20 MAY 2021