

DME DME Assessment Results for GESNR2 path AEX_HOWLN

Results Summary

Flyability:	Completed
DME/DME:	Completed - No Critical DMEs
Name:	Jose G-CTR Medina
Project File:	C:\Users\Jose G-CTR Medina\OneDrive - Federal Aviation Administration\Documents\01. Projects\DME EVALUATIONS\KIAH\GESNR STAR\GESNR2 STAR DME SCREENS 20240829.tgs
Output File:	C:\Users\Jose G-CTR Medina\OneDrive - Federal Aviation Administration\Documents\01. Projects\DME EVALUATIONS\KIAH\GESNR STAR\KIAH [IFPA] GESNR2 20240829_0751 CDT\AEX_HOWLN\KIAH GESNR2 RNAV STAR AEX HOWLN 20240829_0751 CDT.pdf
Procedure Name:	GESNR2
Software: DmeDmePlugin:	7.3.3
Date/Time:	08/29/2024 07:51 CDT
Databases:	DTED LEVEL 0 MAX

Failures

No Failures

Warnings

No Warnings

Informational

No Informational

Notes For Flight Check

None

Flight Plan

Name	Type	Lat/Lon	Altitude (ft)	VNAV Mode	Ground Speed (kts)	Turn Type	Leg Type
AEX	WP	N31° 15' 24.2339", W092° 30' 03.5007"	8000	VNAV	280	FLY_BY	TF
EMGEE	WP	N30° 47' 00.7100", W093° 49' 41.1200"	8000	VNAV	280	FLY_BY	TF
SCHEX	WP	N30° 39' 59.7300", W094° 08' 55.5000"	8000	VNAV	280	FLY_BY	TF
ZEEKK	WP	N30° 32' 08.8600", W094° 30' 14.8900"	8000	VNAV	280	FLY_BY	TF
GESNR	WP	N30° 24' 07.7800", W094° 42' 00.0600"	8000	VNAV	280	FLY_BY	TF
KENNN	WP	N30° 17' 10.8000", W094° 51' 11.1900"	8000	VNAV	250	FLY_BY	TF
KNGWD	WP	N30° 07' 35.8100", W095° 04' 26.9900"	7000	VNAV	240	FLY_BY	TF
EDEEE	WP	N30° 03' 33.6400", W095° 09' 34.6600"	7000	VNAV	240	FLY_BY	TF
REAPR	WP	N29° 56' 34.3700", W095° 18' 28.9900"	5000	VNAV	240	FLY_BY	TF
SHIVV	WP	N29° 53' 31.4400", W095° 22' 21.9000"	5000	VNAV	240	FLY_BY	TF
HOWLN	WP	N29° 53' 32.2100", W095° 27' 54.9000"	5000	VNAV	210	FLY_OVER	TF

DME DME Assessment Results for GESNR2 path AEX_HOWLN

Flyability	
Flight Type:	RNAV_STAR
Selected Airport:	KIAH [IFPA]
Climb Gradient:	None assigned
Speeds:	200 Ground Speed to 11000 FT
	240 Ground Speed to 18000 FT
	260 Ground Speed to 24000 FT
	340 Ground Speed above 24000 FT
Descent During a Turn:	Allowed
VNAV Mode:	Flight Plan

DME/DME	
RNP:	RNP 2
Flight Mode:	Manual
Line of Sight (DTED Level 0 Max):	Evaluated
Inertial Drift:	Enabled
Initial Drift:	0.558 NM
INS Drift Rate:	8.0 NM/Hour
Range Mode:	OSV
RNP Edges:	Evaluated
Min DME Range:	3.0 NM
DME Types:	DME, VOR-DME, VORTAC
DME Include Angles:	30 to 150
Critical DMEs:	Allowed
DoD Facilities:	Not included
Foreign Facilities:	Not included
High DMEs:	Included
Low DMEs:	Included
Terminal DMEs:	Included
Flight Check DMEs:	Not selected
Higher Altitudes:	Not Evaluated
Near Maximum Altitude:	Not Evaluated
Automatic ESVs:	Not enabled
Disabled DMEs:	None

DME/DME (Continued)										
DMEs Used										
#	Name	Lat/Lon	MAGVAR	Range	Type	Source	Critical	Status	Time	Distance
1	LFK	N31° 09' 44.7908", W094° 43' 00.5974"	5.0 E	130	H	IFPA	NO	Enabled		
2	LCH	N30° 08' 29.4490", W093° 06' 20.0490"	7.0 E	130	H	IFPA	NO	Enabled		
3	SWB	N31° 58' 23.5000", W092° 40' 37.5200"	2.0 E	130	DH	IFPA	NO	Enabled		
4	VUH	N29° 16' 09.6039", W094° 52' 03.8108"	6.0 E	130	DH	IFPA	NO	Enabled		
5	ELA	N29° 39' 44.9259", W096° 19' 01.6411"	0.0 E	130	DH	IFPA	NO	Enabled		
6	AEX	N31° 15' 24.2339", W092° 30' 03.5007"	3.0 E	130	H	IFPA	NO	Enabled		
7	MHF	N29° 32' 46.8350", W094° 44' 51.0460"	7.0 E	130	DL	IFPA	NO	Enabled		
8	DAS	N30° 11' 22.9622", W094° 38' 41.9440"	5.0 E	130	H	IFPA	NO	Enabled		
9	IAH	N29° 57' 24.9013", W095° 20' 44.5885"	5.0 E	130	H	IFPA	NO	Enabled		
10	HEZ	N31° 37' 05.4416", W091° 17' 58.7235"	3.0 E	40	L	IFPA	NO	Enabled		

DME DME Assessment Results for GESNR2 path AEX_HOWL

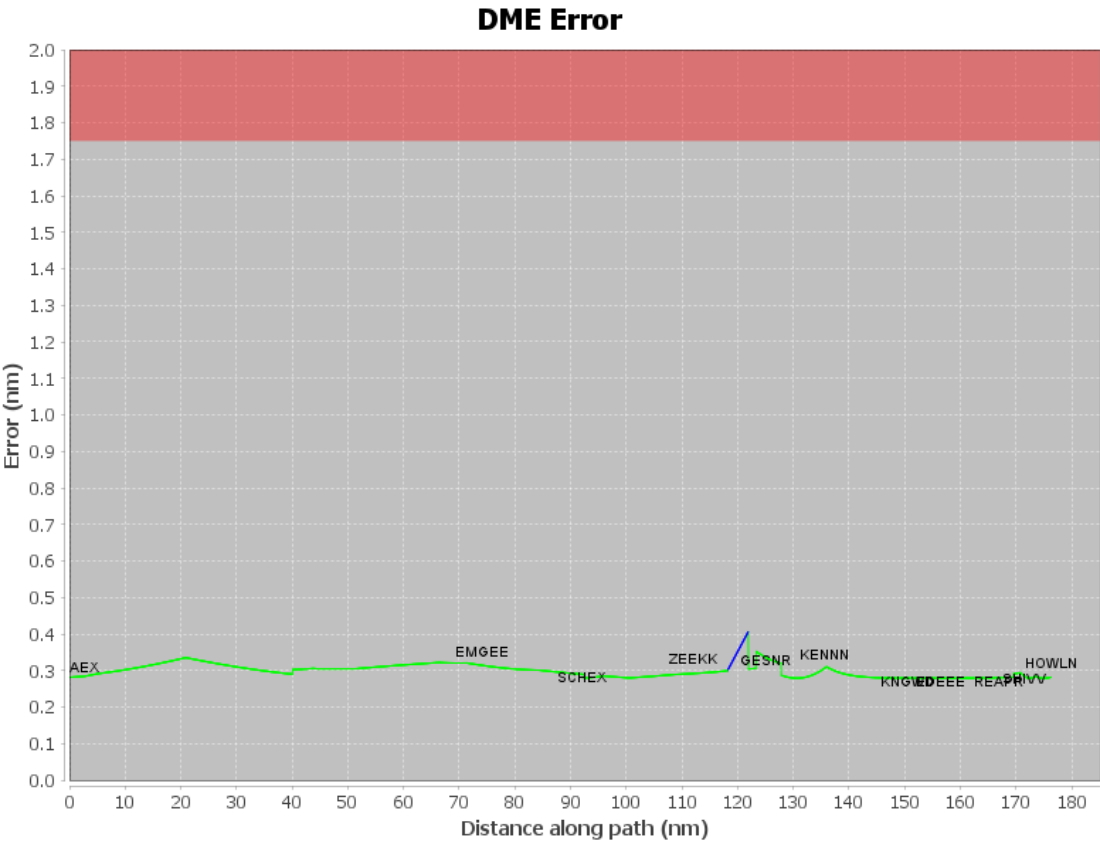
Flight Check DME Selection						
Distance [NM]	Selected DMEs					Alternate
0.0	HEZ [IFPA]	SWB [IFPA]	LCH [IFPA]			
3.0	HEZ [IFPA]	SWB [IFPA]	AEX [IFPA]	LCH [IFPA]		
38.4	LCH [IFPA]	AEX [IFPA]	LFK [IFPA]	SWB [IFPA]	HEZ [IFPA]	
38.7	LCH [IFPA]	AEX [IFPA]	LFK [IFPA]	SWB [IFPA]		
39.9	LFK [IFPA]	LCH [IFPA]	SWB [IFPA]			
62.6	LFK [IFPA]	SWB [IFPA]	LCH [IFPA]	MHF [IFPA]		
79.3	LFK [IFPA]	MHF [IFPA]	LCH [IFPA]			
81.1	LFK [IFPA]	MHF [IFPA]	LCH [IFPA]	SWB [IFPA]	VUH [IFPA]	
81.3	LFK [IFPA]	MHF [IFPA]	LCH [IFPA]			
84.5	LCH [IFPA]	MHF [IFPA]	LFK [IFPA]	VUH [IFPA]		
92.4	LFK [IFPA]	DAS [IFPA]	LCH [IFPA]	MHF [IFPA]	VUH [IFPA]	
94.5	LCH [IFPA]	DAS [IFPA]	MHF [IFPA]	VUH [IFPA]		
118.2						
122.0	DAS [IFPA]	ELA [IFPA]	MHF [IFPA]	VUH [IFPA]		
127.9	IAH [IFPA]	DAS [IFPA]	ELA [IFPA]	MHF [IFPA]	VUH [IFPA]	
128.1	DAS [IFPA]	ELA [IFPA]	MHF [IFPA]	VUH [IFPA]		
128.2	IAH [IFPA]	DAS [IFPA]	ELA [IFPA]	MHF [IFPA]	VUH [IFPA]	
165.5	VUH [IFPA]	DAS [IFPA]	ELA [IFPA]	MHF [IFPA]		
168.1	VUH [IFPA]	ELA [IFPA]	MHF [IFPA]			
170.1	VUH [IFPA]	ELA [IFPA]	MHF [IFPA]	IAH [IFPA]		
171.5	VUH [IFPA]	ELA [IFPA]	MHF [IFPA]			
173.1	MHF [IFPA]	IAH [IFPA]	VUH [IFPA]	ELA [IFPA]		

Inertial Drift Segments			
#	Start Location	End Location	Length [NM]
1	N30° 28' 18.5359", W094° 35' 52.9363"	N30° 26' 00.2236", W094° 39' 15.5518"	3.716

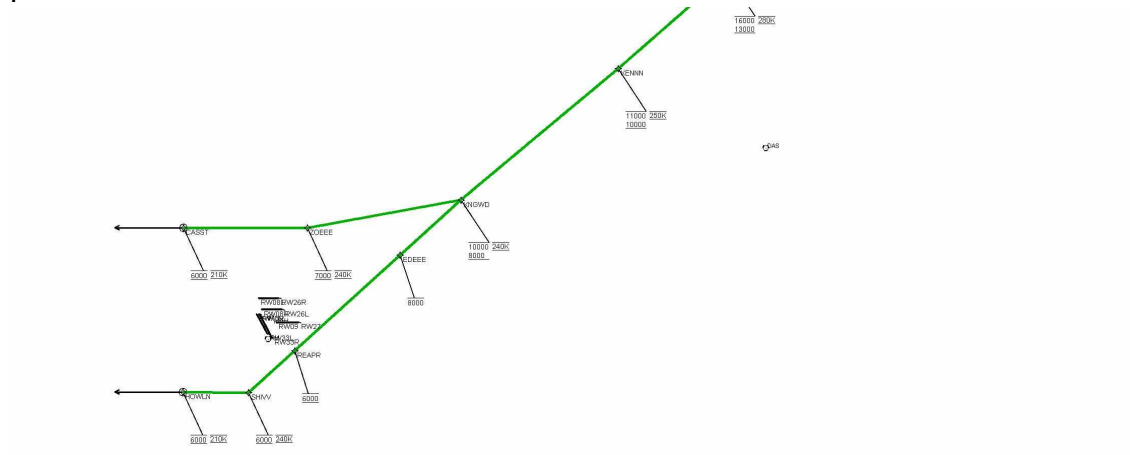
DME DME Assessment Results for GESNR2 path AEX_HOWLNL

Available DMEs by Waypoints			
Waypoint Before	Waypoint After	DME List	Suggested DMEs
AEX	EMGEE	LFK [IFPA], LCH [IFPA], SWB [IFPA], AEX [IFPA], MHF [IFPA], HEZ [IFPA]	
EMGEE	SCHEX	LFK [IFPA], LCH [IFPA], SWB [IFPA], VUH [IFPA], MHF [IFPA]	
SCHEX	ZEEKK	LFK [IFPA], LCH [IFPA], VUH [IFPA], MHF [IFPA], DAS [IFPA]	
ZEEKK	GESNR	LCH [IFPA], VUH [IFPA], ELA [IFPA], MHF [IFPA], DAS [IFPA]	
GESNR	KENNN	VUH [IFPA], ELA [IFPA], MHF [IFPA], DAS [IFPA], IAH [IFPA]	
KENNN	KNGWD	VUH [IFPA], ELA [IFPA], DAS [IFPA], MHF [IFPA], IAH [IFPA]	
KNGWD	EDEEE	VUH [IFPA], ELA [IFPA], DAS [IFPA], MHF [IFPA], IAH [IFPA]	
EDEEE	REAPR	VUH [IFPA], ELA [IFPA], DAS [IFPA], MHF [IFPA], IAH [IFPA]	
REAPR	SHIVV	VUH [IFPA], ELA [IFPA], DAS [IFPA], MHF [IFPA], IAH [IFPA]	
SHIVV	HOWLNL	VUH [IFPA], ELA [IFPA], MHF [IFPA], IAH [IFPA]	

User Data Files								
#	File Name							
1	UserDMEsKIAH [IFPA] GESNR2 RNAV STAR_20240814_0856 CDT.udt							
User DMEs								
#	Name	Lat/Lon	MAGVAR	Range	Elevation [ft]	Frequency	Replaces	Status
1	EMG FAA 850108-020 EMG [IFPA]	N32° 24' 01.4600", W093° 35' 42.5300"	7.0 E	40	155	111.2	EMG FAA 850108-020	
ESV:		Bearing [True]: 109.0° to 141.0° Bearing [Mag]: 102.0° to 134.0°				Arc Distance: Out to 61.0 NM Altitude: 7900.0 to 18200.0 ft		
2	GGG FAA 190508-010 GGG [IFPA]	N32° 25' 03.9211", W094° 45' 11.5002"	7.0 E	130	328.5	112.9	GGG FAA 190508-010	
ESV:		Bearing [True]: 131.0° to 157.0° Bearing [Mag]: 124.0° to 150.0°				Arc Distance: Out to 105.0 NM Altitude: 8000.0 to 18400.0 ft		
3	EMG FAA 850108-018 EMG [IFPA]	N32° 24' 01.4600", W093° 35' 42.5300"	7.0 E	40	155	111.2	EMG FAA 850108-018	
ESV:		Bearing [True]: 182.0° to 195.0° Bearing [Mag]: 175.0° to 188.0°				Arc Distance: Out to 94.0 NM Altitude: 7900.0 to 18200.0 ft		
4	LFK FAA 698119-070 LFK [IFPA]	N31° 09' 44.7908", W094° 43' 00.5974"	5.0 E	130	207.3	112.1	LFK FAA 698119-070	
ESV:		Bearing [True]: 89.0° to 140.0° Bearing [Mag]: 84.0° to 135.0°				Arc Distance: Out to 81.0 NM Altitude: 7900.0 to 14800.0 ft		
5	HEZ FAA 815799-009 HEZ [IFPA]	N31° 37' 05.4416", W091° 17' 58.7235"	3.0 E	40	280.2	110.0	HEZ FAA 815799-009	
ESV:		Bearing [True]: 247.0° to 255.0° Bearing [Mag]: 244.0° to 252.0°				Arc Distance: Out to 104.0 NM Altitude: 7900.0 to 18300.0 ft		
6	MLU FAA 731790-021 MLU [IFPA]	N32° 31' 00.7658", W092° 02' 09.6503"	3.0 E	40	76.7	117.2	MLU FAA 731790-021	
ESV:		Bearing [True]: 220.0° to 231.0° Bearing [Mag]: 217.0° to 228.0°				Arc Distance: Out to 72.0 NM Altitude: 7900.0 to 18100.0 ft		
7	LCH FAA 704136-79 LCH [IFPA]	N30° 08' 29.4490", W093° 06' 20.0490"	7.0 E	130	20	113.4	LCH FAA 704136-79	
ESV:		Bearing [True]: 266.0° to 29.0° Bearing [Mag]: 259.0° to 22.0°				Arc Distance: Out to 83.0 NM Altitude: 7100.0 to 14600.0 ft		

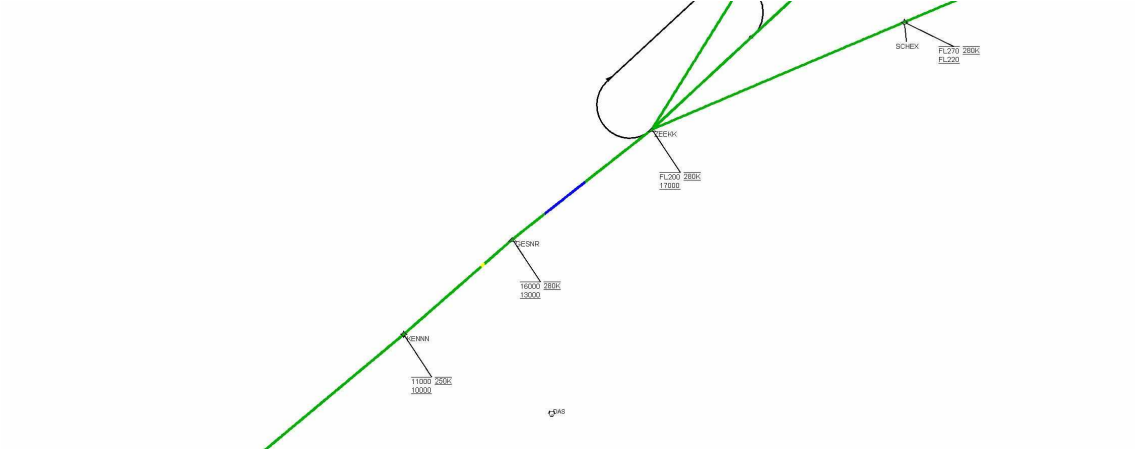


Graphic Depiction 1



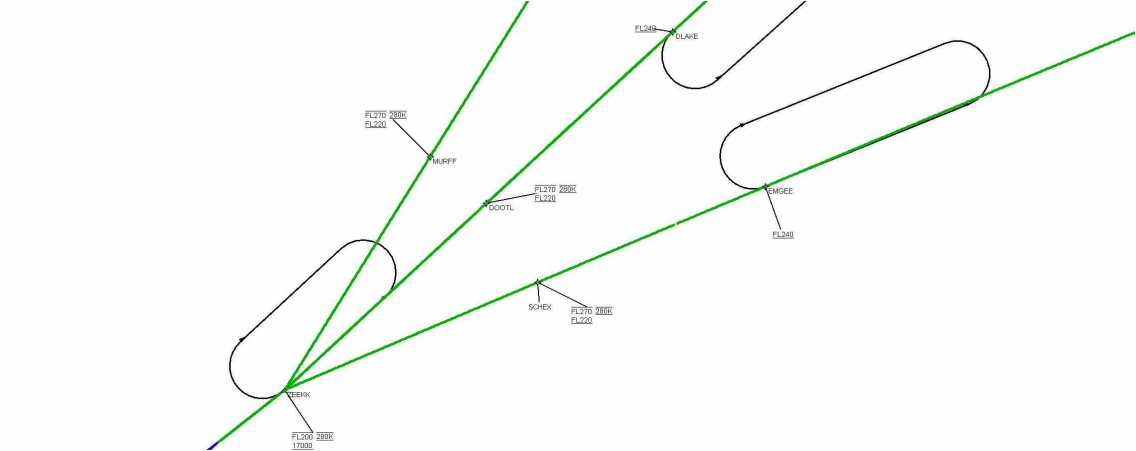
DME DME Assessment Results for GESNR2 path AEX_HOWLN

Graphic Depiction 2



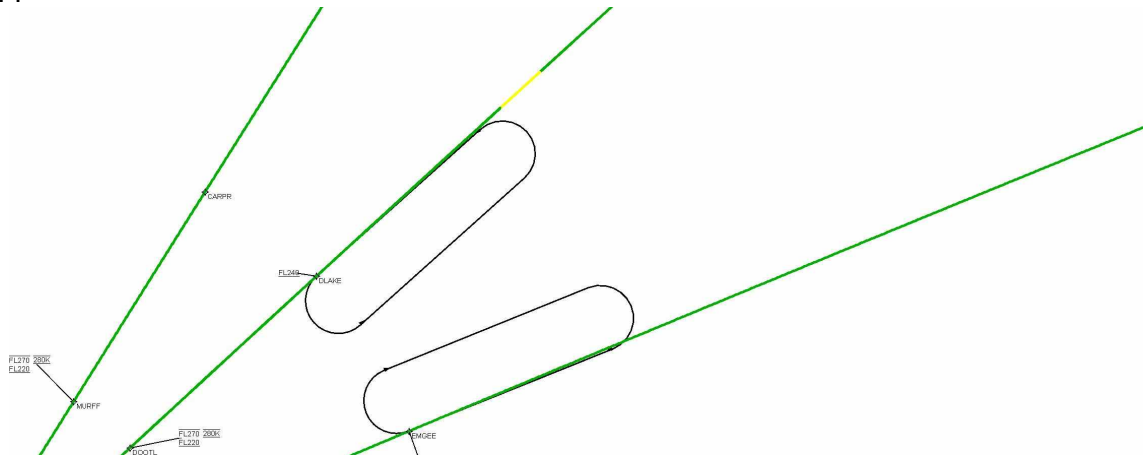
DME DME Assessment Results for GESNR2 path AEX_HOWL

Graphic Depiction 3



DME DME Assessment Results for GESNR2 path AEX_HOWLN

Graphic Depiction 4



DME DME Assessment Results for GESNR2 path KNGWD_CASST

Results Summary

Flyability:	Completed
DME/DME:	Completed - No Critical DMEs
Name:	Jose G-CTR Medina
Project File:	C:\Users\Jose G-CTR Medina\OneDrive - Federal Aviation Administration\Documents\01. Projects\DME EVALUATIONS\KIAH\GESNR STAR\GESNR2 STAR DME SCREENS 20240829.tgs
Output File:	C:\Users\Jose G-CTR Medina\OneDrive - Federal Aviation Administration\Documents\01. Projects\DME EVALUATIONS\KIAH\GESNR STAR\KIAH [IFPA] GESNR2 20240829_0751 CDT\KNGWD_CASST\KIAH GESNR2 RNAV STAR KNGWD CASST 20240829_0751 CDT.pdf
Procedure Name:	GESNR2
Software: DmeDmePlugin:	7.3.3
Date/Time:	08/29/2024 07:51 CDT
Databases:	DTED LEVEL 0 MAX

Failures

No Failures

Warnings

No Warnings

Informational

No Informational

Notes For Flight Check

None

Flight Plan

Name	Type	Lat/Lon	Altitude (ft)	VNAV Mode	Ground Speed (kts)	Turn Type	Leg Type
KNGWD	WP	N30° 07' 35.8100", W095° 04' 26.9900"	7000	VNAV	240	FLY_BY	TF
ZOEEO	WP	N30° 05' 32.5600", W095° 17' 25.1600"	6000	VNAV	240	FLY_BY	TF
CASST	WP	N30° 05' 33.2500", W095° 27' 52.4800"	5000	VNAV	210	FLY_OVER	TF

Flyability

Flight Type:	RNAV_STAR
Selected Airport:	KIAH [IFPA]
Climb Gradient:	None assigned
Speeds:	200 Ground Speed to 11000 FT
	240 Ground Speed to 18000 FT
	260 Ground Speed to 24000 FT
	340 Ground Speed above 24000 FT
Descent During a Turn:	Allowed
VNAV Mode:	Flight Plan

DME DME Assessment Results for GESNR2 path KNGWD_CASST

DME/DME	
RNP:	RNP 2
Flight Mode:	Manual
Line of Sight (DTED Level 0 Max):	Evaluated
Inertial Drift:	Enabled
Initial Drift:	0.558 NM
INS Drift Rate:	8.0 NM/Hour
Range Mode:	OSV
RNP Edges:	Evaluated
Min DME Range:	3.0 NM
DME Types:	DME, VOR-DME, VORTAC
DME Include Angles:	30 to 150
Critical DMEs:	Allowed
DoD Facilities:	Not included
Foreign Facilities:	Not included
High DMEs:	Included
Low DMEs:	Included
Terminal DMEs:	Included
Flight Check DMEs:	Not selected
Higher Altitudes:	Not Evaluated
Near Maximum Altitude:	Not Evaluated
Automatic ESVs:	Not enabled
Disabled DMEs:	None

DME/DME (Continued)										
DMEs Used										
#	Name	Lat/Lon	MAGVAR	Range	Type	Source	Critical	Status	Time	Distance
1	VUH	N29° 16' 09.6039", W094° 52' 03.8108"	6.0 E	130	DH	IFPA	NO	Enabled		
2	ELA	N29° 39' 44.9259", W096° 19' 01.6411"	0.0 E	130	DH	IFPA	NO	Enabled		
3	TNV	N30° 17' 18.6954", W096° 03' 29.6635"	8.0 E	130	H	IFPA	NO	Enabled		
4	DAS	N30° 11' 22.9622", W094° 38' 41.9440"	5.0 E	130	H	IFPA	NO	Enabled		
5	MHF	N29° 32' 46.8350", W094° 44' 51.0460"	7.0 E	130	DL	IFPA	NO	Enabled		
6	IAH	N29° 57' 24.9013", W095° 20' 44.5885"	5.0 E	130	H	IFPA	NO	Enabled		

Flight Check DME Selection						
Distance [NM]	Selected DMEs					Alternate
0.0	VUH [IFPA]	DAS [IFPA]	MHF [IFPA]	ELA [IFPA]	IAH [IFPA]	
16.7	VUH [IFPA]	ELA [IFPA]	IAH [IFPA]	MHF [IFPA]	TNV [IFPA]	

Inertial Drift Segments			
#	Start Location	End Location	Length [NM]

Available DMEs by Waypoints			
Waypoint Before	Waypoint After	DME List	Suggested DMEs
KNGWD	ZOEEO	VUH [IFPA], ELA [IFPA], DAS [IFPA], MHF [IFPA], IAH [IFPA]	
ZOEEO	CASST	VUH [IFPA], ELA [IFPA], TNV [IFPA], DAS [IFPA], MHF [IFPA], IAH [IFPA]	

DME DME Assessment Results for GESNR2 path KNGWD_CASST

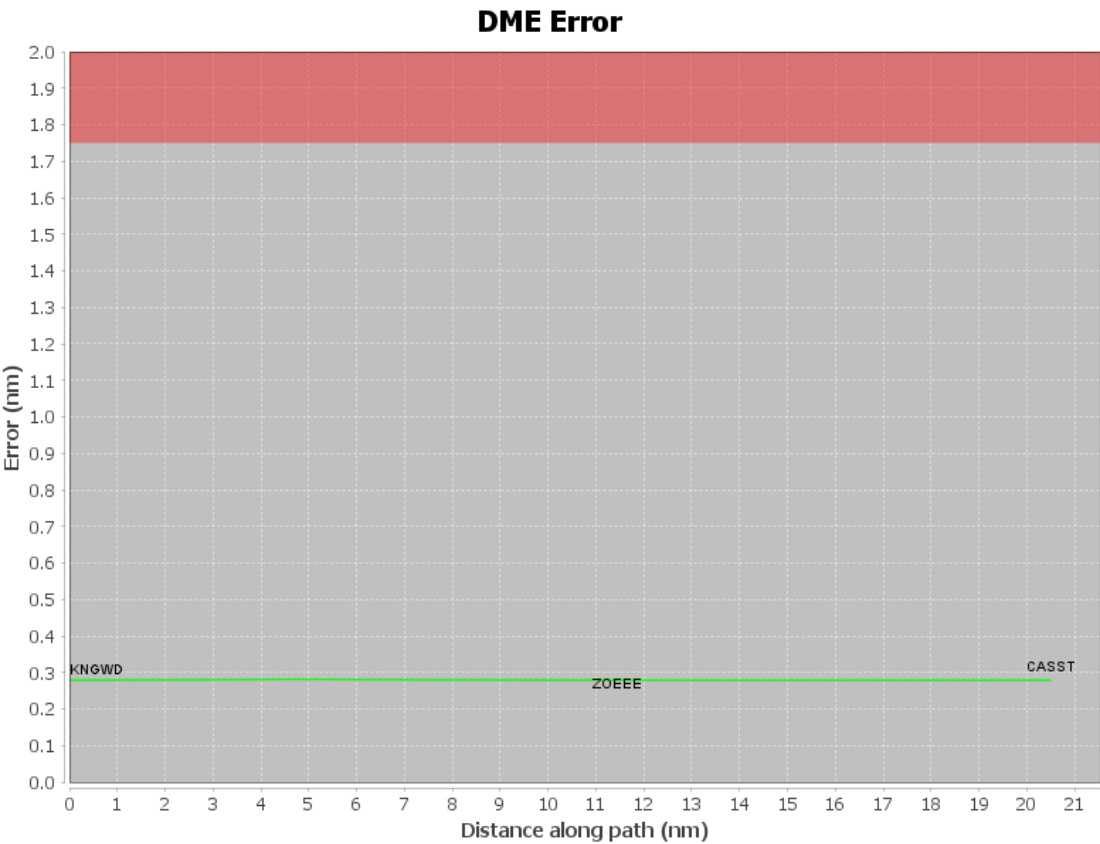
User Data Files

#	File Name
1	UserDMEsKIAH [IFPA] GESNR2 RNAV STAR_20240814_0856 CDT.udt

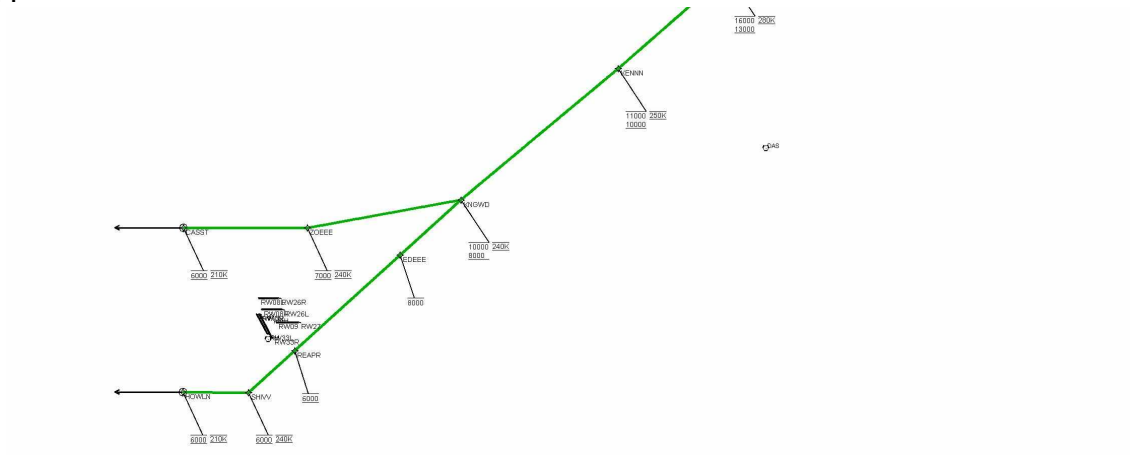
User DMEs

#	Name	Lat/Lon	MAGVAR	Range	Elevation [ft]	Frequency	Replaces	Status
1	EMG FAA 850108-020 EMG [IFPA]	N32° 24' 01.4600", W093° 35' 42.5300"	7.0 E	40	155	111.2	EMG FAA 850108-020	
ESV:		Bearing [True]: 109.0° to 141.0° Bearing [Mag]: 102.0° to 134.0°				Arc Distance: Out to 61.0 NM Altitude: 7900.0 to 18200.0 ft		
2	GGG FAA 190508-010 GGG [IFPA]	N32° 25' 03.9211", W094° 45' 11.5002"	7.0 E	130	328.5	112.9	GGG FAA 190508-010	
ESV:		Bearing [True]: 131.0° to 157.0° Bearing [Mag]: 124.0° to 150.0°				Arc Distance: Out to 105.0 NM Altitude: 8000.0 to 18400.0 ft		
3	EMG FAA 850108-018 EMG [IFPA]	N32° 24' 01.4600", W093° 35' 42.5300"	7.0 E	40	155	111.2	EMG FAA 850108-018	
ESV:		Bearing [True]: 182.0° to 195.0° Bearing [Mag]: 175.0° to 188.0°				Arc Distance: Out to 94.0 NM Altitude: 7900.0 to 18200.0 ft		
4	LFK FAA 698119-070 LFK [IFPA]	N31° 09' 44.7908", W094° 43' 00.5974"	5.0 E	130	207.3	112.1	LFK FAA 698119-070	
ESV:		Bearing [True]: 89.0° to 140.0° Bearing [Mag]: 84.0° to 135.0°				Arc Distance: Out to 81.0 NM Altitude: 7900.0 to 14800.0 ft		
5	HEZ FAA 815799-009 HEZ [IFPA]	N31° 37' 05.4416", W091° 17' 58.7235"	3.0 E	40	280.2	110.0	HEZ FAA 815799-009	
ESV:		Bearing [True]: 247.0° to 255.0° Bearing [Mag]: 244.0° to 252.0°				Arc Distance: Out to 104.0 NM Altitude: 7900.0 to 18300.0 ft		
6	MLU FAA 731790-021 MLU [IFPA]	N32° 31' 00.7658", W092° 02' 09.6503"	3.0 E	40	76.7	117.2	MLU FAA 731790-021	
ESV:		Bearing [True]: 220.0° to 231.0° Bearing [Mag]: 217.0° to 228.0°				Arc Distance: Out to 72.0 NM Altitude: 7900.0 to 18100.0 ft		
7	LCH FAA 704136-79 LCH [IFPA]	N30° 08' 29.4490", W093° 06' 20.0490"	7.0 E	130	20	113.4	LCH FAA 704136-79	
ESV:		Bearing [True]: 266.0° to 29.0° Bearing [Mag]: 259.0° to 22.0°				Arc Distance: Out to 83.0 NM Altitude: 7100.0 to 14600.0 ft		

DME DME Assessment Results for GESNR2 path KNGWD_CASST

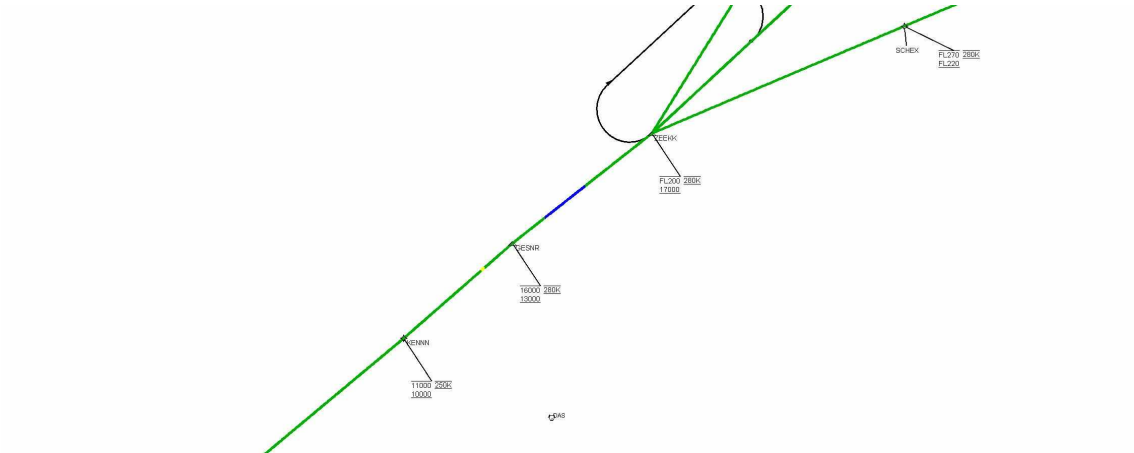


Graphic Depiction 1



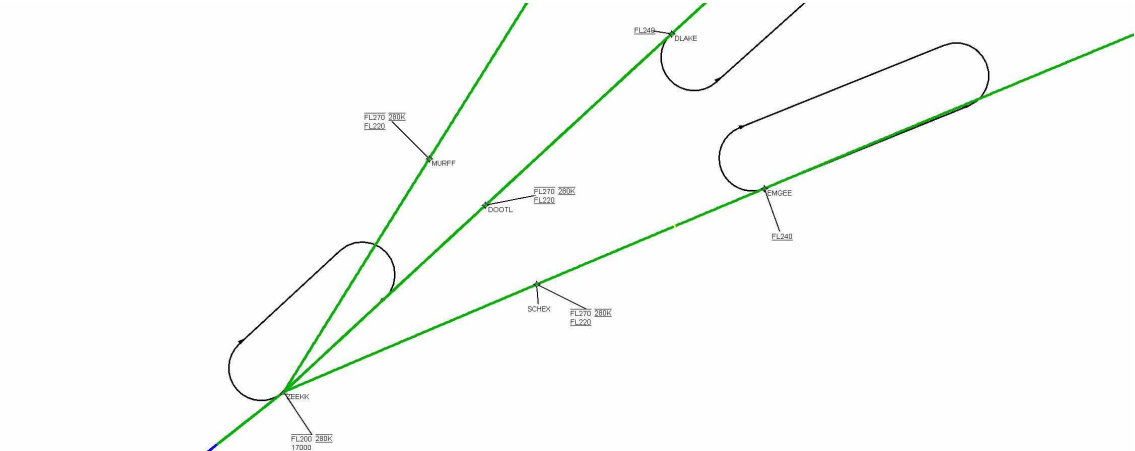
DME DME Assessment Results for GESNR2 path KNGWD_CASST

Graphic Depiction 2



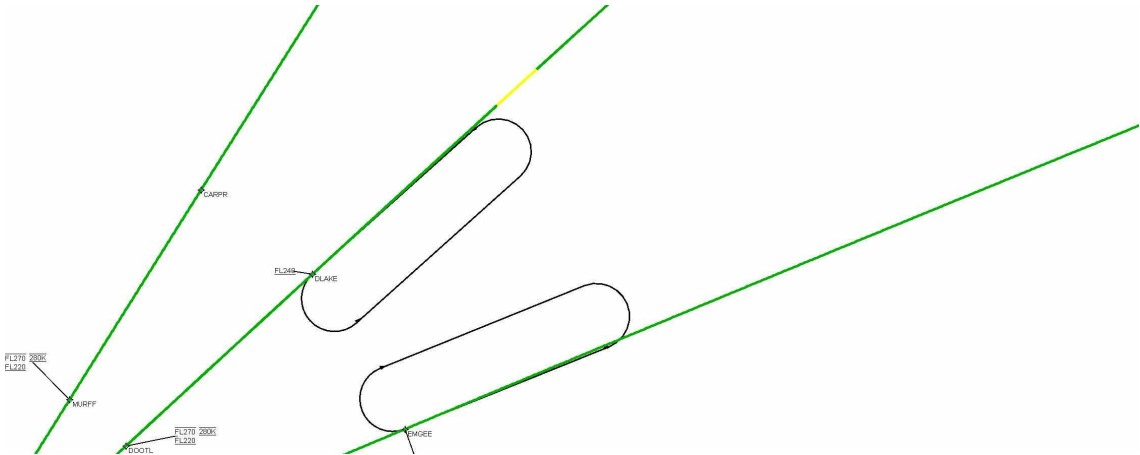
DME DME Assessment Results for GESNR2 path KNGWD_CASST

Graphic Depiction 3



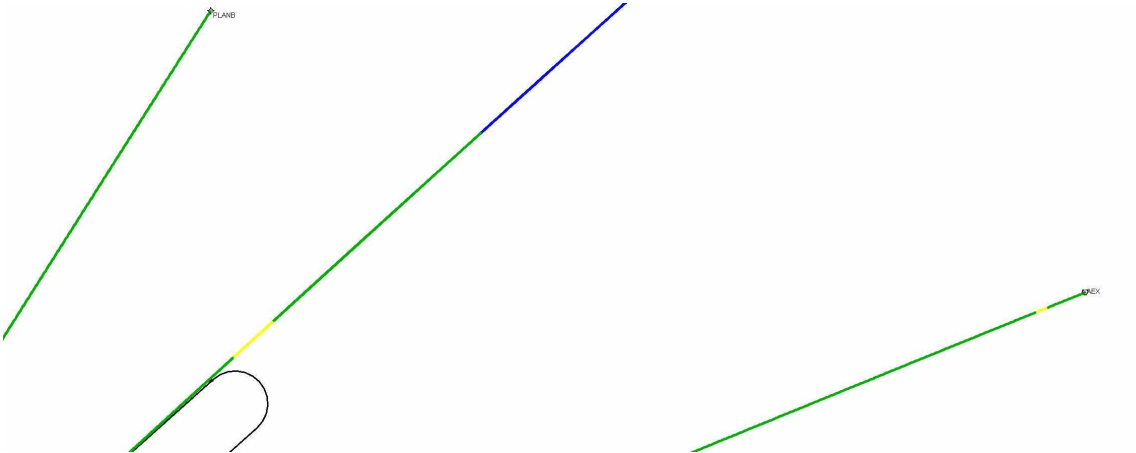
DME DME Assessment Results for GESNR2 path KNGWD_CASST

Graphic Depiction 4

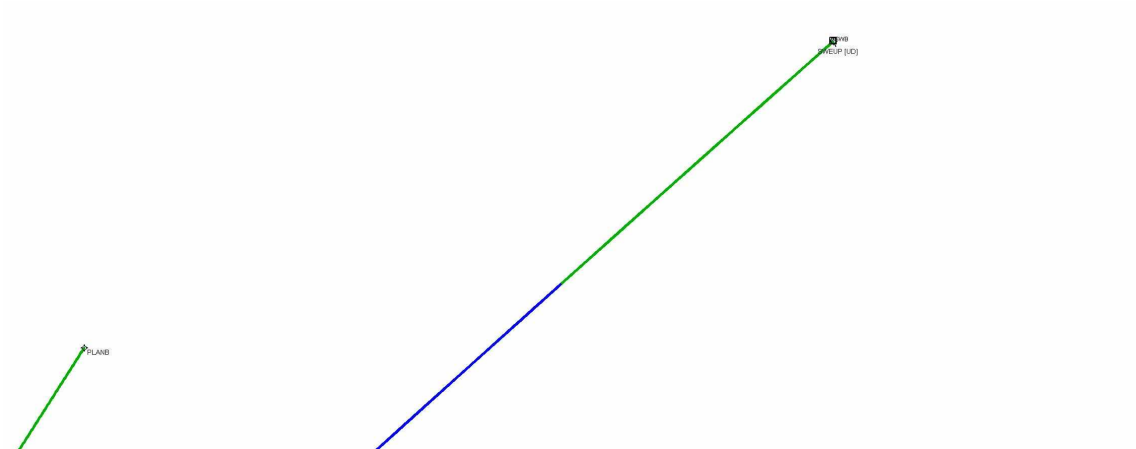


DME DME Assessment Results for GESNR2 path KNGWD_CASST

Graphic Depiction 5



Graphic Depiction 6



DME DME Assessment Results for GESNR2 path PLANB_ZEEKK

Results Summary

Flyability:	Completed
DME/DME:	Completed - No Critical DMEs
Name:	Jose G-CTR Medina
Project File:	C:\Users\Jose G-CTR Medina\OneDrive - Federal Aviation Administration\Documents\01. Projects\DME EVALUATIONS\KIAH\GESNR STAR\GESNR2 STAR DME SCREENS 20240829.tgs
Output File:	C:\Users\Jose G-CTR Medina\OneDrive - Federal Aviation Administration\Documents\01. Projects\DME EVALUATIONS\KIAH\GESNR STAR\KIAH [IFPA] GESNR2 20240829_0751 CDT\PLANB_ZEEKK\KIAH GESNR2 RNAV STAR PLANB ZEEKK 20240829_0751 CDT.pdf
Procedure Name:	GESNR2
Software: DmeDmePlugin:	7.3.3
Date/Time:	08/29/2024 07:51 CDT
Databases:	DTED LEVEL 0 MAX

Failures

No Failures

Warnings

No Warnings

Informational

No Informational

Notes For Flight Check

None

Flight Plan

Name	Type	Lat/Lon	Altitude (ft)	VNAV Mode	Ground Speed (kts)	Turn Type	Leg Type
PLANB	WP	N31° 35' 59.2600", W093° 43' 51.5400"	8000	VNAV	280	FLY_BY	TF
CARPR	WP	N31° 04' 28.3400", W094° 06' 54.8300"	8000	VNAV	280	FLY_BY	TF
MURFF	WP	N30° 49' 10.9700", W094° 17' 58.9400"	8000	VNAV	280	FLY_BY	TF
ZEEKK	WP	N30° 32' 08.8600", W094° 30' 14.8900"	8000	VNAV	280	FLY_BY	TF

Flyability

Flight Type:	RNAV_STAR
Selected Airport:	KIAH [IFPA]
Climb Gradient:	None assigned
Speeds:	200 Ground Speed to 11000 FT
	240 Ground Speed to 18000 FT
	260 Ground Speed to 24000 FT
	340 Ground Speed above 24000 FT
Descent During a Turn:	Allowed
VNAV Mode:	Flight Plan

DME DME Assessment Results for GESNR2 path PLANB_ZEEKK

DME/DME	
RNP:	RNP 2
Flight Mode:	Manual
Line of Sight (DTED Level 0 Max):	Evaluated
Inertial Drift:	Enabled
Initial Drift:	0.558 NM
INS Drift Rate:	8.0 NM/Hour
Range Mode:	OSV
RNP Edges:	Evaluated
Min DME Range:	3.0 NM
DME Types:	DME, VOR-DME, VORTAC
DME Include Angles:	30 to 150
Critical DMEs:	Allowed
DoD Facilities:	Not included
Foreign Facilities:	Not included
High DMEs:	Included
Low DMEs:	Included
Terminal DMEs:	Included
Flight Check DMEs:	Not selected
Higher Altitudes:	Not Evaluated
Near Maximum Altitude:	Not Evaluated
Automatic ESVs:	Not enabled
Disabled DMEs:	None

DME/DME (Continued)										
DMEs Used										
#	Name	Lat/Lon	MAGVAR	Range	Type	Source	Critical	Status	Time	Distance
1	LFK	N31° 09' 44.7908", W094° 43' 00.5974"	5.0 E	130	H	IFPA	NO	Enabled		
2	LCH	N30° 08' 29.4490", W093° 06' 20.0490"	7.0 E	130	H	IFPA	NO	Enabled		
3	SWB	N31° 58' 23.5000", W092° 40' 37.5200"	2.0 E	130	DH	IFPA	NO	Enabled		
4	VUH	N29° 16' 09.6039", W094° 52' 03.8108"	6.0 E	130	DH	IFPA	NO	Enabled		
5	MHF	N29° 32' 46.8350", W094° 44' 51.0460"	7.0 E	130	DL	IFPA	NO	Enabled		
6	DAS	N30° 11' 22.9622", W094° 38' 41.9440"	5.0 E	130	H	IFPA	NO	Enabled		
7	GGG	N32° 25' 03.9211", W094° 45' 11.5002"	7.0 E	130	H	IFPA	NO	Enabled		
8	EMG	N32° 24' 01.4600", W093° 35' 42.5300"	7.0 E	40	L	IFPA	NO	Enabled		

DME DME Assessment Results for GESNR2 path PLANB_ZEEKK

Flight Check DME Selection						
Distance [NM]	Selected DMEs					Alternate
0.0	GGG [IFPA]	SWB [IFPA]	EMG [IFPA]			
6.3	GGG [IFPA]	SWB [IFPA]				
26.4	GGG [IFPA]	SWB [IFPA]	LFK [IFPA]			
28.3	LCH [IFPA]	SWB [IFPA]	GGG [IFPA]	LFK [IFPA]		
32.9	LCH [IFPA]	SWB [IFPA]	LFK [IFPA]			
35.4	LCH [IFPA]	SWB [IFPA]	MHF [IFPA]	LFK [IFPA]		
44.0	MHF [IFPA]	LFK [IFPA]	LCH [IFPA]			
53.6	LCH [IFPA]	MHF [IFPA]	LFK [IFPA]	VUH [IFPA]		
57.7	LCH [IFPA]	DAS [IFPA]	LFK [IFPA]	MHF [IFPA]	VUH [IFPA]	
71.4	LCH [IFPA]	DAS [IFPA]	MHF [IFPA]	VUH [IFPA]		

Inertial Drift Segments			
#	Start Location	End Location	Length [NM]

Available DMEs by Waypoints			
Waypoint Before	Waypoint After	DME List	Suggested DMEs
PLANB	CARPR	LFK [IFPA], LCH [IFPA], SWB [IFPA], MHF [IFPA], GGG [IFPA], EMG [IFPA]	
CARPR	MURFF	LFK [IFPA], LCH [IFPA], SWB [IFPA], VUH [IFPA], MHF [IFPA]	
MURFF	ZEEKK	LFK [IFPA], LCH [IFPA], VUH [IFPA], MHF [IFPA], DAS [IFPA]	

DME DME Assessment Results for GESNR2 path PLANB_ZEEKK

User Data Files

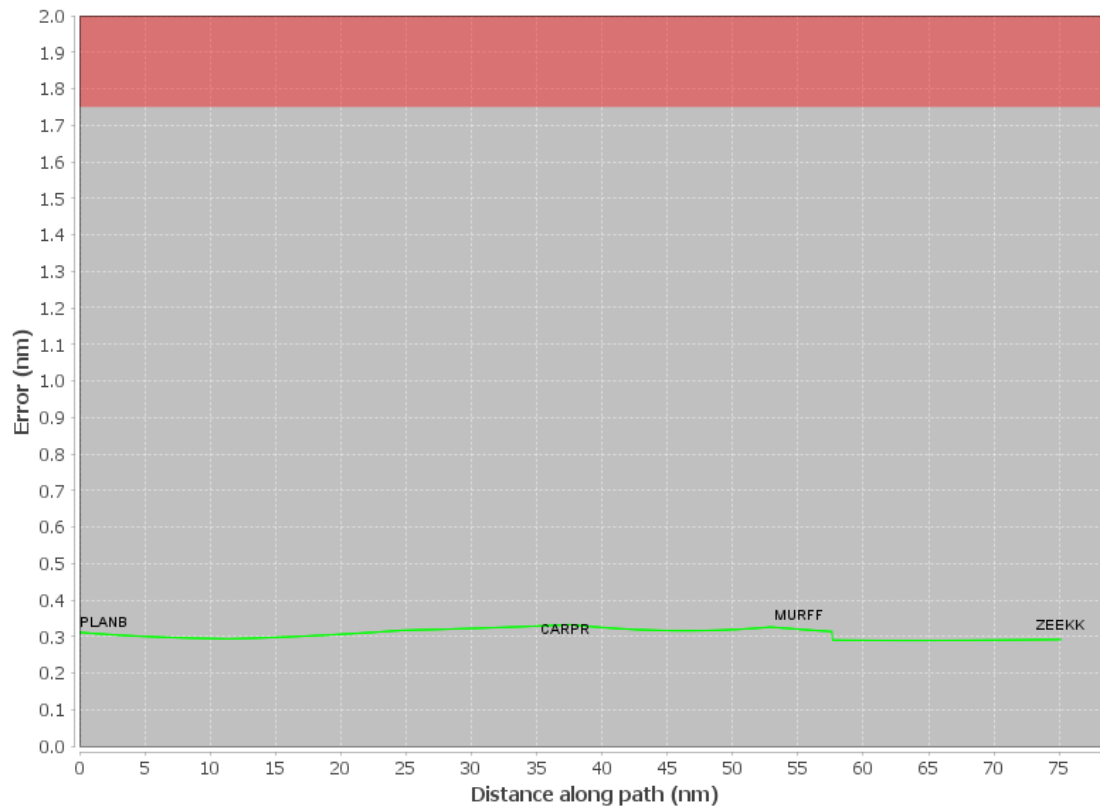
#	File Name
1	UserDMEsKIAH [IFPA] GESNR2 RNAV STAR_20240814_0856 CDT.udt

User DMEs

#	Name	Lat/Lon	MAGVAR	Range	Elevation [ft]	Frequency	Replaces	Status
1	EMG FAA 850108-020 EMG [IFPA]	N32° 24' 01.4600", W093° 35' 42.5300"	7.0 E	40	155	111.2	EMG FAA 850108-020	
ESV:		Bearing [True]: 109.0° to 141.0° Bearing [Mag]: 102.0° to 134.0°				Arc Distance: Out to 61.0 NM Altitude: 7900.0 to 18200.0 ft		
2	GGG FAA 190508-010 GGG [IFPA]	N32° 25' 03.9211", W094° 45' 11.5002"	7.0 E	130	328.5	112.9	GGG FAA 190508-010	
ESV:		Bearing [True]: 131.0° to 157.0° Bearing [Mag]: 124.0° to 150.0°				Arc Distance: Out to 105.0 NM Altitude: 8000.0 to 18400.0 ft		
3	EMG FAA 850108-018 EMG [IFPA]	N32° 24' 01.4600", W093° 35' 42.5300"	7.0 E	40	155	111.2	EMG FAA 850108-018	
ESV:		Bearing [True]: 182.0° to 195.0° Bearing [Mag]: 175.0° to 188.0°				Arc Distance: Out to 94.0 NM Altitude: 7900.0 to 18200.0 ft		
4	LFK FAA 698119-070 LFK [IFPA]	N31° 09' 44.7908", W094° 43' 00.5974"	5.0 E	130	207.3	112.1	LFK FAA 698119-070	
ESV:		Bearing [True]: 89.0° to 140.0° Bearing [Mag]: 84.0° to 135.0°				Arc Distance: Out to 81.0 NM Altitude: 7900.0 to 14800.0 ft		
5	HEZ FAA 815799-009 HEZ [IFPA]	N31° 37' 05.4416", W091° 17' 58.7235"	3.0 E	40	280.2	110.0	HEZ FAA 815799-009	
ESV:		Bearing [True]: 247.0° to 255.0° Bearing [Mag]: 244.0° to 252.0°				Arc Distance: Out to 104.0 NM Altitude: 7900.0 to 18300.0 ft		
6	MLU FAA 731790-021 MLU [IFPA]	N32° 31' 00.7658", W092° 02' 09.6503"	3.0 E	40	76.7	117.2	MLU FAA 731790-021	
ESV:		Bearing [True]: 220.0° to 231.0° Bearing [Mag]: 217.0° to 228.0°				Arc Distance: Out to 72.0 NM Altitude: 7900.0 to 18100.0 ft		
7	LCH FAA 704136-79 LCH [IFPA]	N30° 08' 29.4490", W093° 06' 20.0490"	7.0 E	130	20	113.4	LCH FAA 704136-79	
ESV:		Bearing [True]: 266.0° to 29.0° Bearing [Mag]: 259.0° to 22.0°				Arc Distance: Out to 83.0 NM Altitude: 7100.0 to 14600.0 ft		

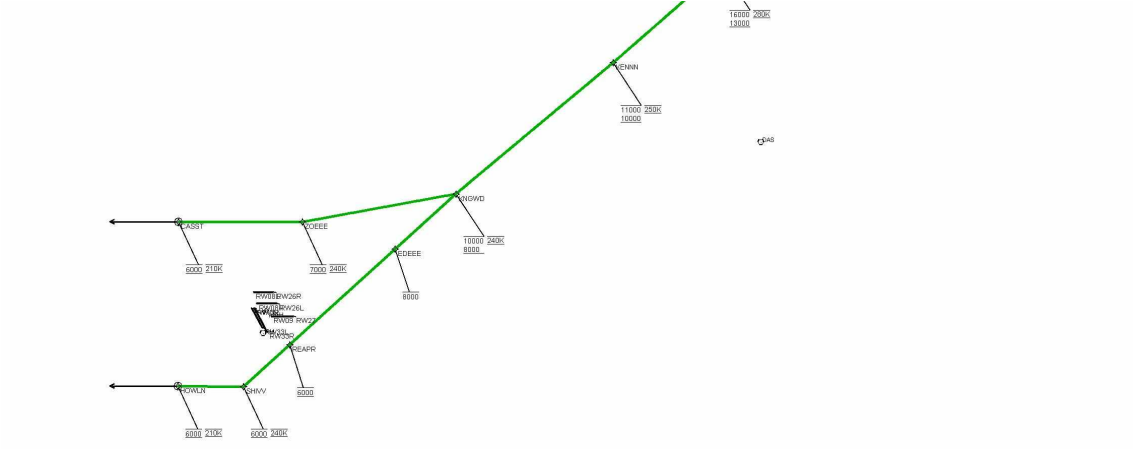
DME DME Assessment Results for GESNR2 path PLANB_ZEEKK

DME Error

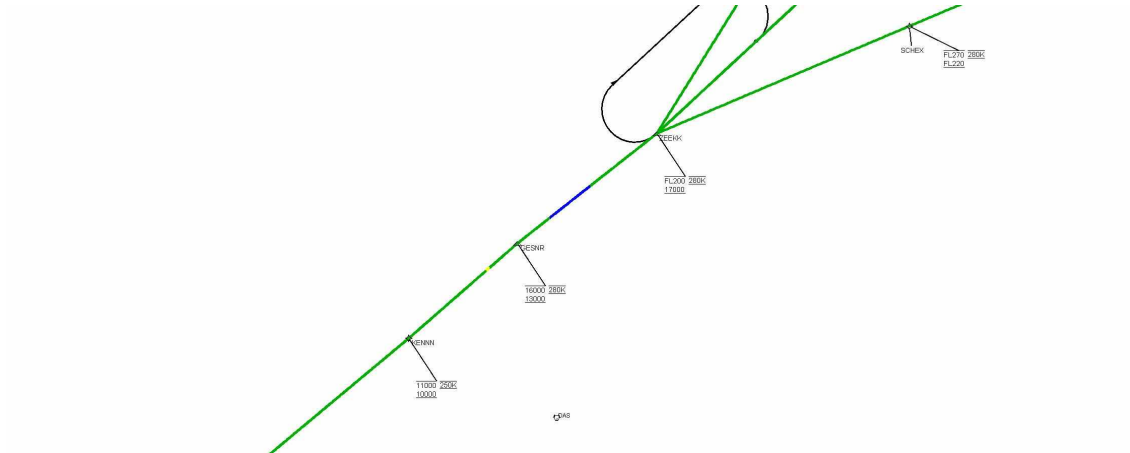


Graphic Depiction 1

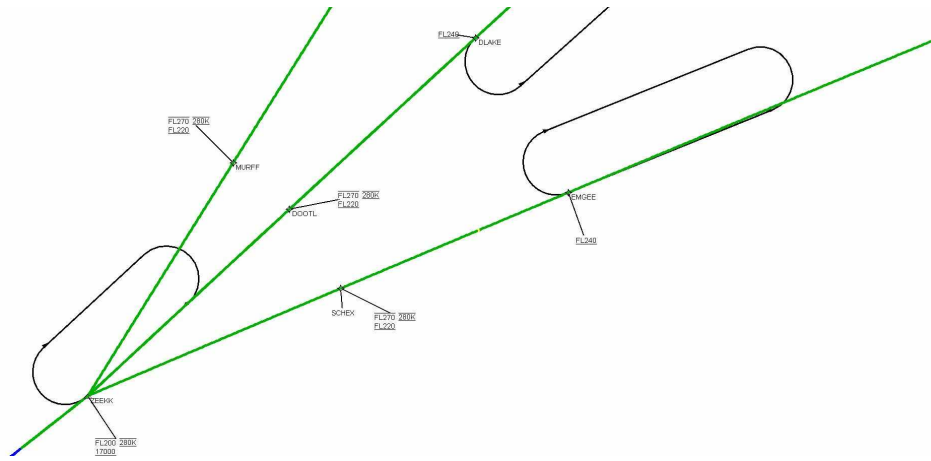
DME DME Assessment Results for GESNR2 path PLANB_ZEEKK



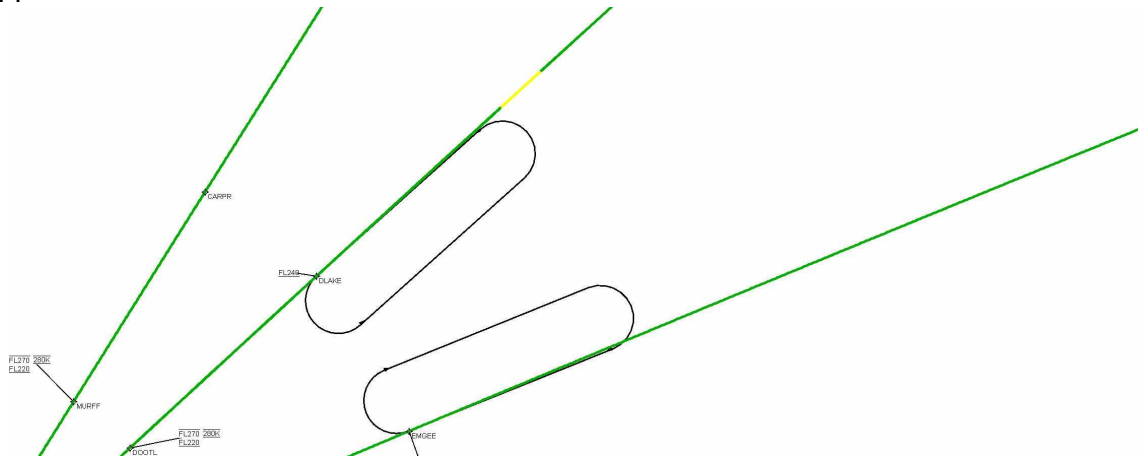
Graphic Depiction 2



Graphic Depiction 3

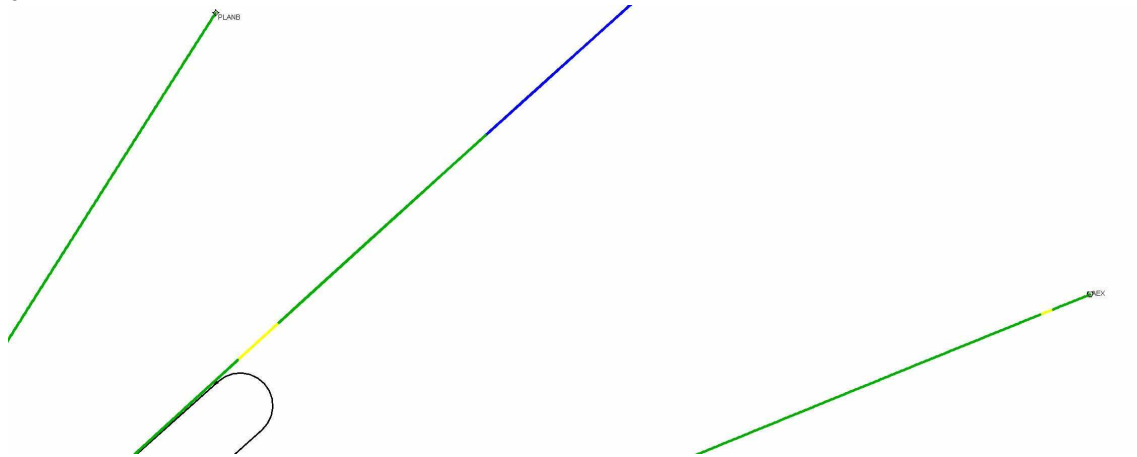


Graphic Depiction 4



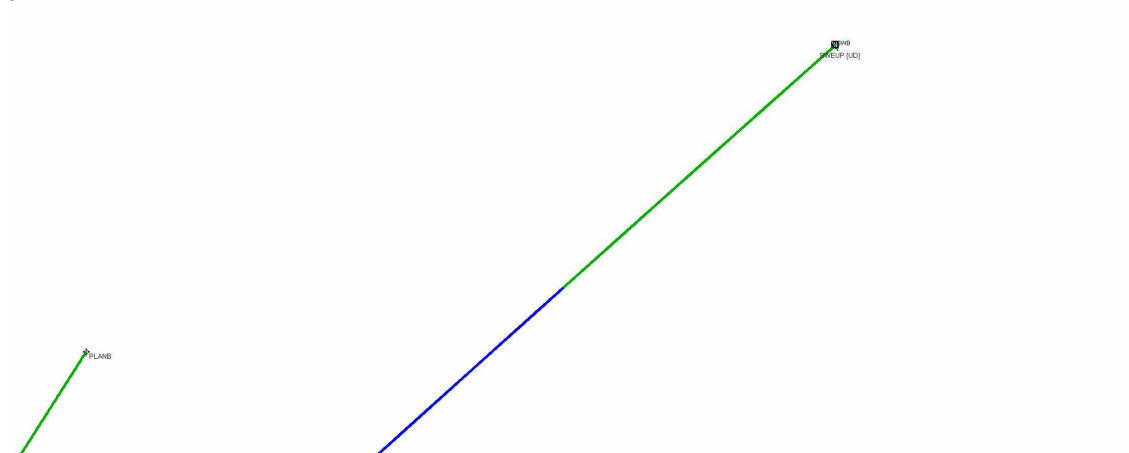
DME DME Assessment Results for GESNR2 path PLANB_ZEEKK

Graphic Depiction 5



DME DME Assessment Results for GESNR2 path PLANB_ZEEKK

Graphic Depiction 6



DME DME Assessment Results for GESNR2 path SWEUP_ZEEKK

Results Summary

Flyability:	Completed
DME/DME:	Completed - No Critical DMEs
Name:	Jose G-CTR Medina
Project File:	C:\Users\Jose G-CTR Medina\OneDrive - Federal Aviation Administration\Documents\01. Projects\DME EVALUATIONS\KIAH\GESNR STAR\GESNR2 STAR DME SCREENS 20240829.tgs
Output File:	C:\Users\Jose G-CTR Medina\OneDrive - Federal Aviation Administration\Documents\01. Projects\DME EVALUATIONS\KIAH\GESNR STAR\KIAH [IFPA] GESNR2 20240829_0751 CDT\SWEUP_ZEEKK\KIAH GESNR2 RNAV STAR SWEUP ZEEKK 20240829_0751 CDT.pdf
Procedure Name:	GESNR2
Software: DmeDmePlugin:	7.3.3
Date/Time:	08/29/2024 07:51 CDT
Databases:	DTED LEVEL 0 MAX

Failures

No Failures

Warnings

No Warnings

Informational

No Informational

Notes For Flight Check

None

Flight Plan

Name	Type	Lat/Lon	Altitude (ft)	VNAV Mode	Ground Speed (kts)	Turn Type	Leg Type
SWEUP	WP	N31° 58' 23.0700", W092° 40' 38.0000"	8000	VNAV	280	FLY_BY	TF
DLAKE	WP	N30° 58' 20.0900", W093° 57' 30.1200"	8000	VNAV	280	FLY_BY	TF
DOOTL	WP	N30° 45' 47.0400", W094° 13' 14.3900"	8000	VNAV	280	FLY_BY	TF
ZEEKK	WP	N30° 32' 08.8600", W094° 30' 14.8900"	8000	VNAV	280	FLY_BY	TF

Flyability

Flight Type:	RNAV_STAR
Selected Airport:	KIAH [IFPA]
Climb Gradient:	None assigned
Speeds:	200 Ground Speed to 11000 FT
	240 Ground Speed to 18000 FT
	260 Ground Speed to 24000 FT
	340 Ground Speed above 24000 FT
Descent During a Turn:	Allowed
VNAV Mode:	Flight Plan

DME DME Assessment Results for GESNR2 path SWEUP_ZEEKK

DME/DME	
RNP:	RNP 2
Flight Mode:	Manual
Line of Sight (DTED Level 0 Max):	Evaluated
Inertial Drift:	Enabled
Initial Drift:	0.558 NM
INS Drift Rate:	8.0 NM/Hour
Range Mode:	OSV
RNP Edges:	Evaluated
Min DME Range:	3.0 NM
DME Types:	DME, VOR-DME, VORTAC
DME Include Angles:	30 to 150
Critical DMEs:	Allowed
DoD Facilities:	Not included
Foreign Facilities:	Not included
High DMEs:	Included
Low DMEs:	Included
Terminal DMEs:	Included
Flight Check DMEs:	Not selected
Higher Altitudes:	Not Evaluated
Near Maximum Altitude:	Not Evaluated
Automatic ESVs:	Not enabled
Disabled DMEs:	None

DME/DME (Continued)										
DMEs Used										
#	Name	Lat/Lon	MAGVAR	Range	Type	Source	Critical	Status	Time	Distance
1	LFK	N31° 09' 44.7908", W094° 43' 00.5974"	5.0 E	130	H	IFPA	NO	Enabled		
2	LCH	N30° 08' 29.4490", W093° 06' 20.0490"	7.0 E	130	H	IFPA	NO	Enabled		
3	SWB	N31° 58' 23.5000", W092° 40' 37.5200"	2.0 E	130	DH	IFPA	NO	Enabled		
4	VUH	N29° 16' 09.6039", W094° 52' 03.8108"	6.0 E	130	DH	IFPA	NO	Enabled		
5	ELD	N33° 15' 22.1537", W092° 44' 38.2119"	7.0 E	130	DH	IFPA	NO	Enabled		
6	MHF	N29° 32' 46.8350", W094° 44' 51.0460"	7.0 E	130	DL	IFPA	NO	Enabled		
7	DAS	N30° 11' 22.9622", W094° 38' 41.9440"	5.0 E	130	H	IFPA	NO	Enabled		
8	MLU	N32° 31' 00.7658", W092° 02' 09.6503"	3.0 E	40	L	IFPA	NO	Enabled		
9	EMG	N32° 24' 01.4600", W093° 35' 42.5300"	7.0 E	40	L	IFPA	NO	Enabled		
10	GGG	N32° 25' 03.9211", W094° 45' 11.5002"	7.0 E	130	H	IFPA	NO	Enabled		

DME DME Assessment Results for GESNR2 path SWEUP_ZEEKK

Flight Check DME Selection						
Distance [NM]	Selected DMEs					Alternate
0.0	EMG [IFPA]	MLU [IFPA]	ELD [IFPA]			
4.2	EMG [IFPA]	MLU [IFPA]	SWB [IFPA]	ELD [IFPA]		
20.2	SWB [IFPA]	ELD [IFPA]	MLU [IFPA]			
25.7	SWB [IFPA]	ELD [IFPA]				
26.4						
46.5	LCH [IFPA]	SWB [IFPA]				
50.8	GGG [IFPA]	SWB [IFPA]	LCH [IFPA]			
66.9	LCH [IFPA]	SWB [IFPA]	GGG [IFPA]	EMG [IFPA]		
75.6	EMG [IFPA]	LFK [IFPA]	LCH [IFPA]	SWB [IFPA]	GGG [IFPA]	
90.2	LCH [IFPA]	SWB [IFPA]	LFK [IFPA]	MHF [IFPA]	GGG [IFPA]	
91.7	LCH [IFPA]	SWB [IFPA]	LFK [IFPA]	MHF [IFPA]		
98.9	LFK [IFPA]	MHF [IFPA]	LCH [IFPA]			
104.6	LCH [IFPA]	MHF [IFPA]	LFK [IFPA]	VUH [IFPA]		
109.6	LCH [IFPA]	DAS [IFPA]	LFK [IFPA]	MHF [IFPA]	VUH [IFPA]	
118.9	LCH [IFPA]	DAS [IFPA]	MHF [IFPA]	VUH [IFPA]		

Inertial Drift Segments			
#	Start Location	End Location	Length [NM]
1	N31° 40' 40.2935", W093° 03' 34.9704"	N31° 27' 05.5182", W093° 21' 01.1209"	20.1374

Available DMEs by Waypoints			
Waypoint Before	Waypoint After	DME List	Suggested DMEs
SWEUP	DLAKE	LFK [IFPA], LCH [IFPA], SWB [IFPA], ELD [IFPA], MHF [IFPA], MLU [IFPA], EMG [IFPA], GGG [IFPA]	
DLAKE	DOOTL	LFK [IFPA], LCH [IFPA], SWB [IFPA], VUH [IFPA], MHF [IFPA], GGG [IFPA], EMG [IFPA]	
DOOTL	ZEEKK	LFK [IFPA], LCH [IFPA], VUH [IFPA], MHF [IFPA], DAS [IFPA]	

DME DME Assessment Results for GESNR2 path SWEUP_ZEEKK

User Data Files

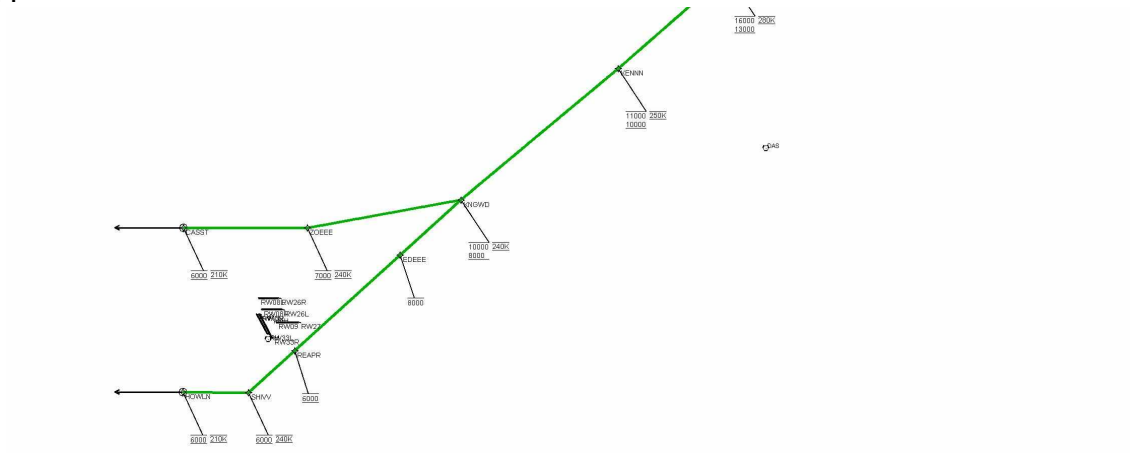
#	File Name							
1	UserDMEsKIAH [IFPA] GESNR2 RNAV STAR_20240814_0856 CDT.udt							

User DMEs

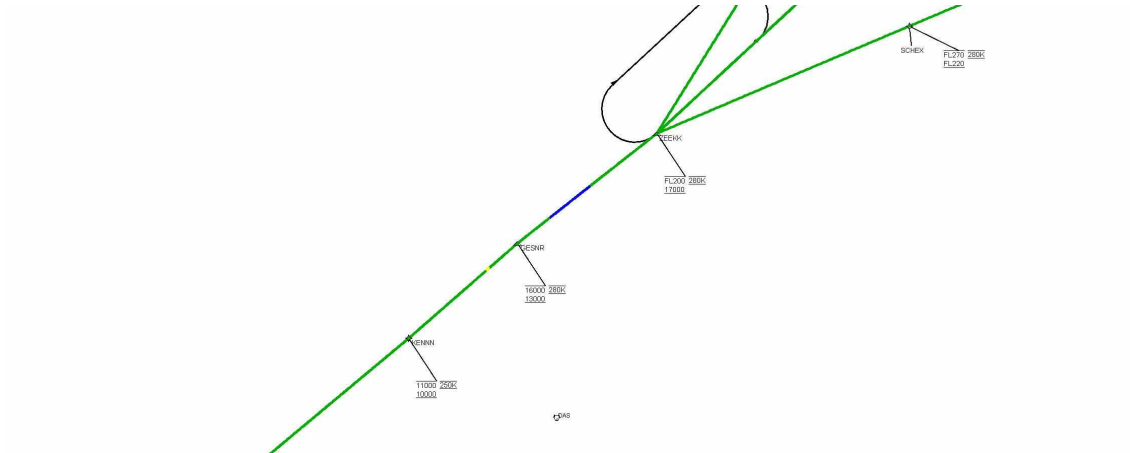
#	Name	Lat/Lon	MAGVAR	Range	Elevation [ft]	Frequency	Replaces	Status
1	EMG FAA 850108-020 EMG [IFPA]	N32° 24' 01.4600", W093° 35' 42.5300"	7.0 E	40	155	111.2	EMG FAA 850108-020	
ESV:		Bearing [True]: 109.0° to 141.0° Bearing [Mag]: 102.0° to 134.0°				Arc Distance: Out to 61.0 NM Altitude: 7900.0 to 18200.0 ft		
2	GGG FAA 190508-010 GGG [IFPA]	N32° 25' 03.9211", W094° 45' 11.5002"	7.0 E	130	328.5	112.9	GGG FAA 190508-010	
ESV:		Bearing [True]: 131.0° to 157.0° Bearing [Mag]: 124.0° to 150.0°				Arc Distance: Out to 105.0 NM Altitude: 8000.0 to 18400.0 ft		
3	EMG FAA 850108-018 EMG [IFPA]	N32° 24' 01.4600", W093° 35' 42.5300"	7.0 E	40	155	111.2	EMG FAA 850108-018	
ESV:		Bearing [True]: 182.0° to 195.0° Bearing [Mag]: 175.0° to 188.0°				Arc Distance: Out to 94.0 NM Altitude: 7900.0 to 18200.0 ft		
4	LFK FAA 698119-070 LFK [IFPA]	N31° 09' 44.7908", W094° 43' 00.5974"	5.0 E	130	207.3	112.1	LFK FAA 698119-070	
ESV:		Bearing [True]: 89.0° to 140.0° Bearing [Mag]: 84.0° to 135.0°				Arc Distance: Out to 81.0 NM Altitude: 7900.0 to 14800.0 ft		
5	HEZ FAA 815799-009 HEZ [IFPA]	N31° 37' 05.4416", W091° 17' 58.7235"	3.0 E	40	280.2	110.0	HEZ FAA 815799-009	
ESV:		Bearing [True]: 247.0° to 255.0° Bearing [Mag]: 244.0° to 252.0°				Arc Distance: Out to 104.0 NM Altitude: 7900.0 to 18300.0 ft		
6	MLU FAA 731790-021 MLU [IFPA]	N32° 31' 00.7658", W092° 02' 09.6503"	3.0 E	40	76.7	117.2	MLU FAA 731790-021	
ESV:		Bearing [True]: 220.0° to 231.0° Bearing [Mag]: 217.0° to 228.0°				Arc Distance: Out to 72.0 NM Altitude: 7900.0 to 18100.0 ft		
7	LCH FAA 704136-79 LCH [IFPA]	N30° 08' 29.4490", W093° 06' 20.0490"	7.0 E	130	20	113.4	LCH FAA 704136-79	
ESV:		Bearing [True]: 266.0° to 29.0° Bearing [Mag]: 259.0° to 22.0°				Arc Distance: Out to 83.0 NM Altitude: 7100.0 to 14600.0 ft		



Graphic Depiction 1

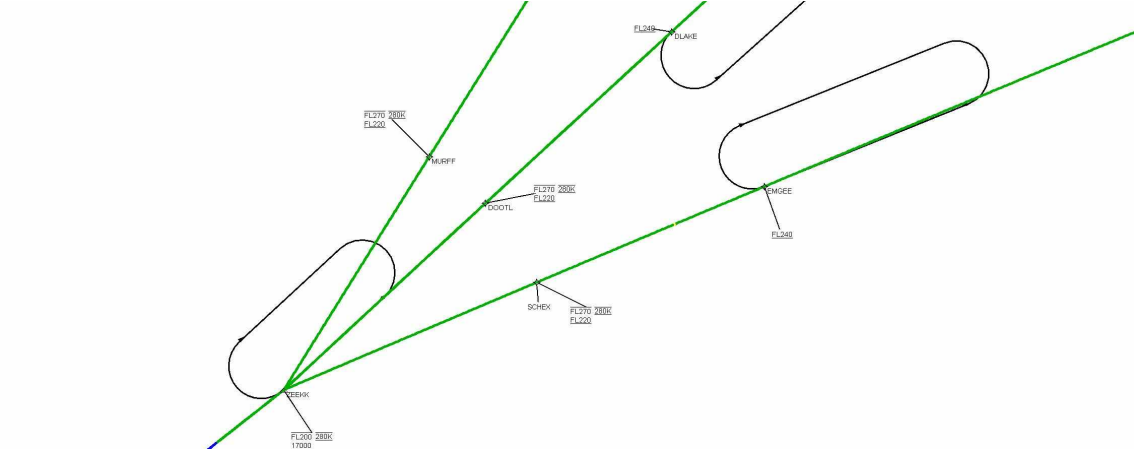


Graphic Depiction 2



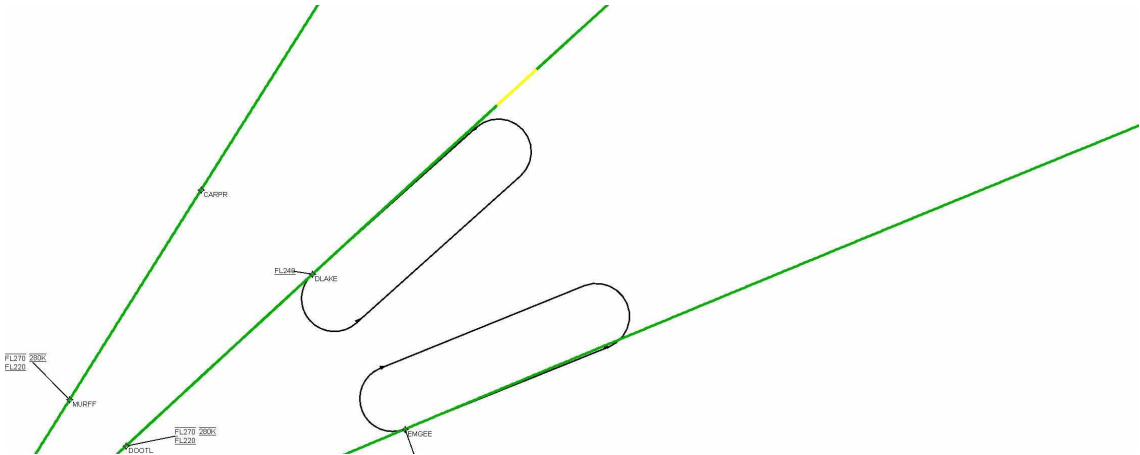
DME DME Assessment Results for GESNR2 path SWEUP_ZEEKK

Graphic Depiction 3



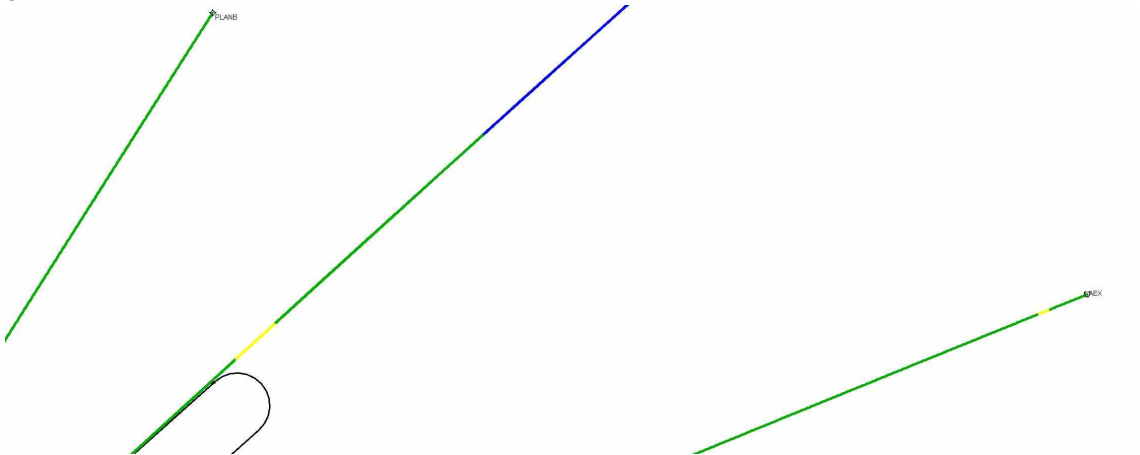
DME DME Assessment Results for GESNR2 path SWEUP_ZEEKK

Graphic Depiction 4

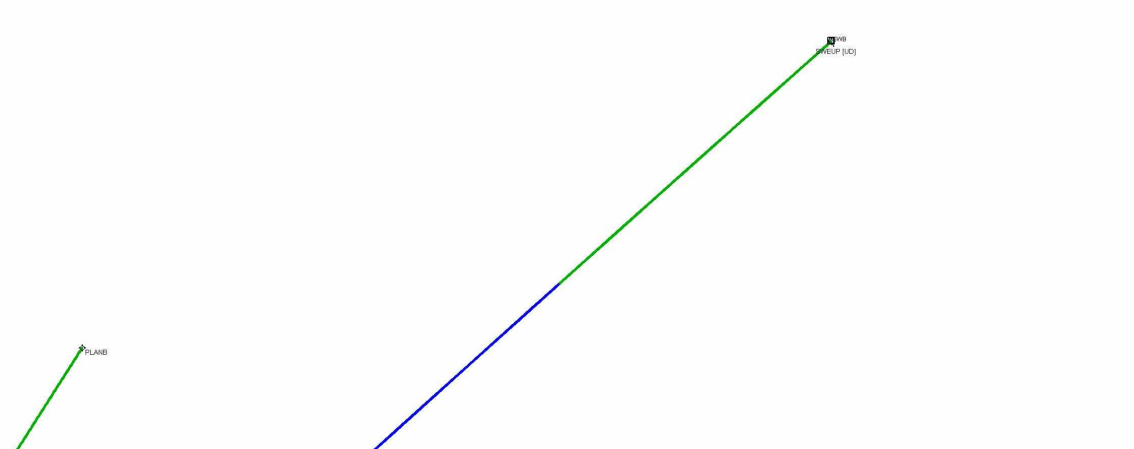


DME DME Assessment Results for GESNR2 path SWEUP_ZEEKK

Graphic Depiction 5

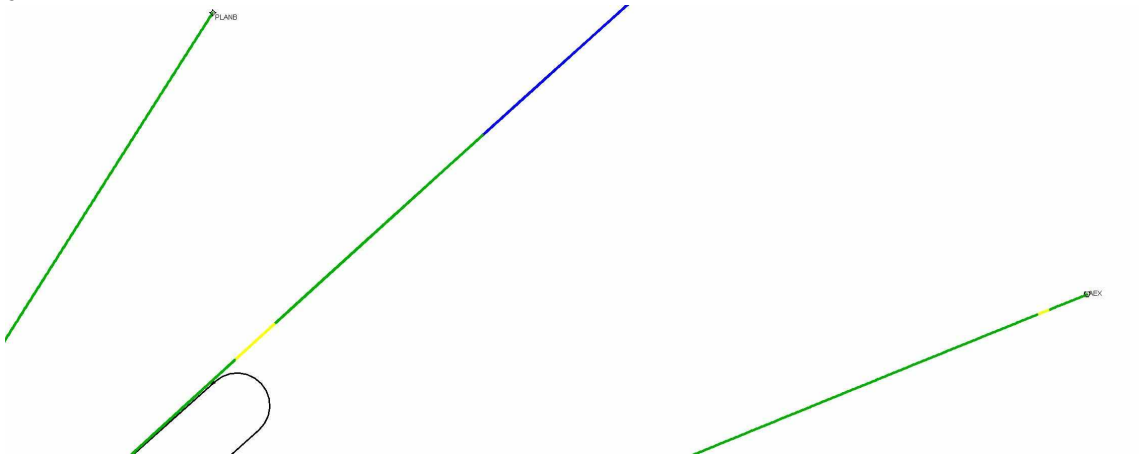


Graphic Depiction 6



DME DME Assessment Results for GESNR2 path AEX_HOWLN

Graphic Depiction 5



Graphic Depiction 6

