

Flight Procedures Cover Page	Task Action: FLIGHT CHECK	Task Type: IAP	Estimated Chart Date: 06/17/2021	APWS Task ID: EC8013B662D64776BB90B867CE8C24C7	APWS Project ID: EA78BDB6CF5F4CACBA600B5BD6B6D981
Procedure: RNAV (GPS) RWY 32 AMDT 1B		Enroute: NO	Specialist: Eubanks, Katherine		Agreement Number:
Airport ID: KPRO			Airport City: PERRY		State: IA
Facility ID:	Facility Type:	Flight Inspection Remark Type: New FC Slot			
<p>Procedure Comments: ACTIVE AIRPORT AND RUNWAY DATA FOR KPRO.</p> <p>CRC REMAINDER CHANGED FROM C7E17BE1 TO 477C0868.</p> <p>CONTACT: JON DENTON: 405.954.5467</p>					

QUALITY
22
CHECKED

3.16.2021
BD

QUALITY
38
CHECKED

PERRY, IOWA

AL-5668 (FAA)

FIG

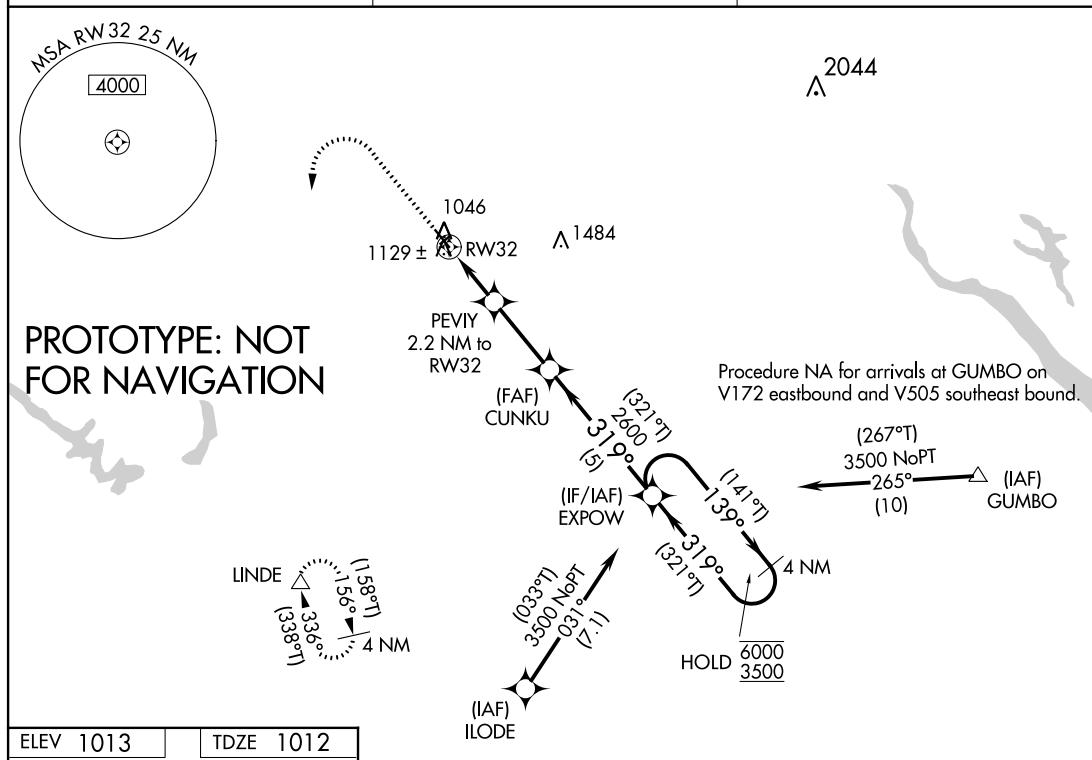
WAAS CH 90508 W32A	APP CRS 319°	Rwy Idg TDZE Apt Elev	4001 1012 1013
--	------------------------	-----------------------------	---

RNAV (GPS) RWY 32

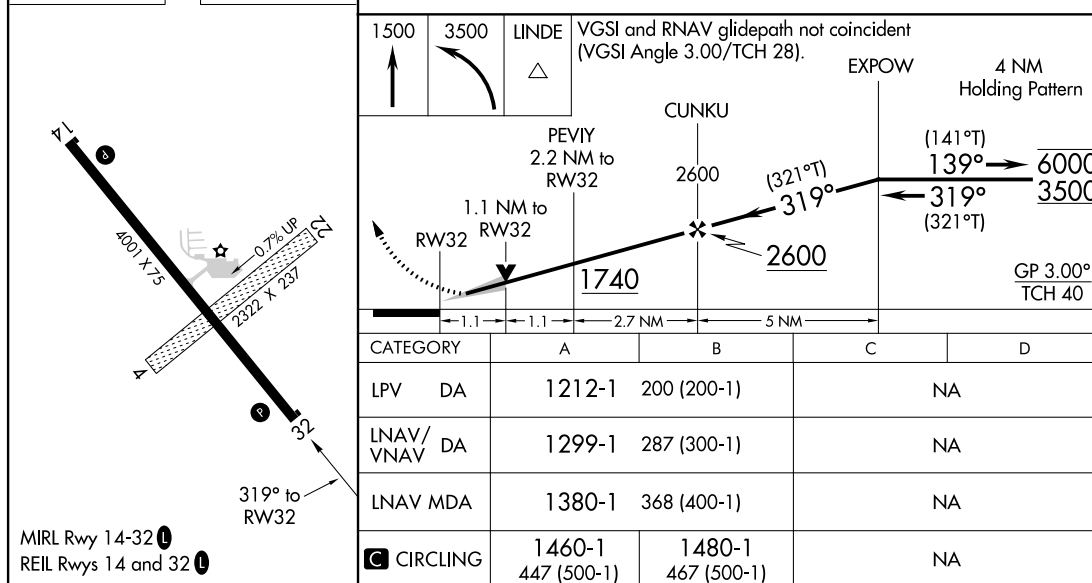
PERRY MUNI (PRO)

RNP APCH - GPS.	MISSED APPROACH: Climb to 1500 then climbing left turn to 3500 direct LINDE and hold.
-----------------	---

AWOS-3 118.0	DES MOINES APP CON 135.2 360.7	UNICOM 122.8 (CTAF) 1
------------------------	--	---------------------------------



ELEV 1013	TDZE 1012
-----------	-----------



PERRY, IOWA

Amdt 1B FIG

41°50'N-94°10'W

PERRY MUNI (PRO)

RNAV (GPS) RWY 32

AUTOMATED AL-5668 RNAV (GPS) RWY 32

NC-3
17 MAR 2021
COMPILER: CG
REVIEWER:
DBL CHKR:
EFF DATE: FIG

OLD

PERRY, IOWA

AL-5668 (FAA)

20142

WAAS CH 90508 W32A	APP CRS 319°	Rwy Idg TDZE Apt Elev	4001 1012 1013
--	------------------------	-----------------------------	---

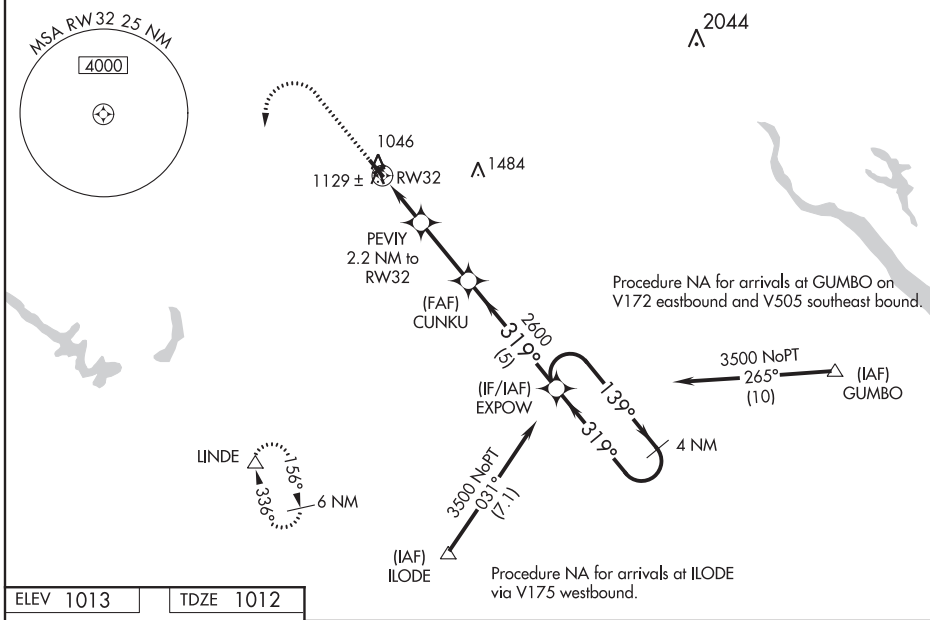
RNAV (GPS) RWY 32

PERRY MUNI (PRO)

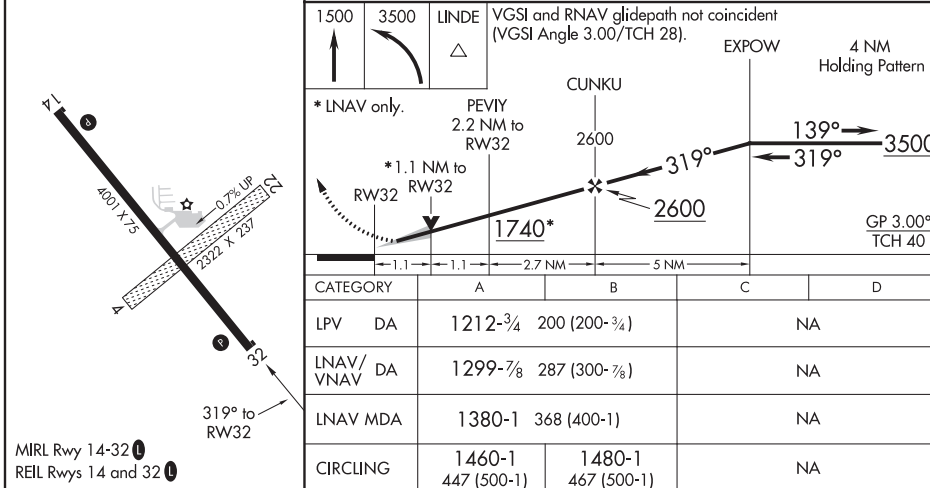
⚠ For uncompensated Baro-VNAV systems, LNAV/VNAV NA below -17°C (2°F) or above 54°C (130°F). DME/DME RNP-0.3 NA. When local altimeter setting not received, use Boone altimeter setting and increase all DA 66 feet and all MDA 80 feet. Increase LPV visibility all Cats to 7/8 mile, and increase LNAV/VNAV visibility all Cats to 1 1/8 mile. Baro-VNAV and VDP NA when using Boone altimeter setting.

MISSED APPROACH: Climb to 1500 then climbing left turn to 3500 direct LINDE and hold.

AWOS-3 118.0	DES MOINES APP CON 135.2 360.7	UNICOM 122.8 (CTAF) 1
------------------------	--	---------------------------------



ELEV 1013	TDZE 1012
-----------	-----------



PERRY, IOWA

Amdt 1A 29MAY14

41°50'N-94°10'W

RNAV (GPS) RWY 32

PERRY MUNI (PRO)

NC-3, 31 DEC 2020 to 28 JAN 2021

NC-3, 31 DEC 2020 to 28 JAN 2021

