

Flight Procedures Cover Page	Task Action: Abbreviated Amendment	Task Type: IAP	Estimated Chart Date: 04/18/2024	APWS Task ID: 8F0104065DD14080A0EAD13323469932	APWS Project ID: 9D01F20ED78148E78AC467D7C17E8985
Procedure: RNAV (GPS) RWY 19 AMDT 0B		Enroute: NO	Specialist: Dougherty, Steven		Agreement Number:
Airport ID: KCXO			Airport City: HOUSTON		State: TX
Facility ID:	Facility Type:	Flight Inspection Remark Type:			
<div>Procedure Comments: PROCESSED IAW TECHNICAL SUPPORT GROUP (AJF-17) MEMO DATED 07/07/2021, SUBJECT: GUIDANCE FOR PROCEDURAL CHANGES REQUIRING FLIGHT INSPECTION/VALIDATION. REASON FOR PROJECT: UPDATE FORMS TO DELETE LNAV SDF CONTROLLING OBST THAT WAS PLANTED INSIDE THE OIS SURVEY AREA AND USE A DTED OBST AS THE SDF CONTROLLING OBST. ACTIVE AIRPORT DATA USED. CONTACT DAVID M. DANNER, AJV-A421, 405-954-5077.</div> <div>QUALITY 12 CHECKED</div> <div>QUALITY 41 CHECKED</div>					

OLD

HOUSTON, TEXAS

AL-5573 (FAA)

21336

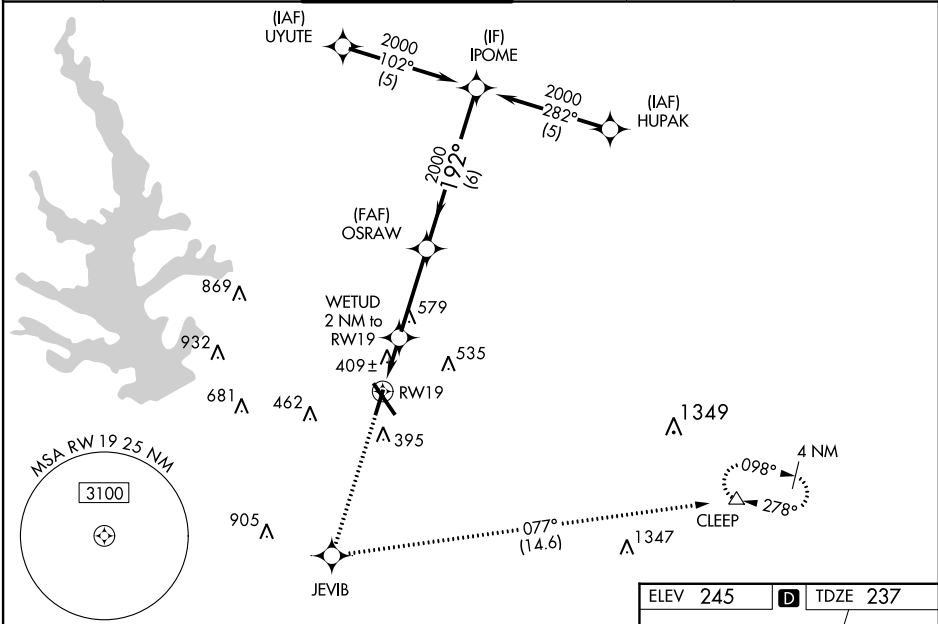
WAAS CH 90219 W19A	APP CRS 192°	Rwy Idg TDZE Apt Elev 5000 237 245
--	------------------------	--

RNAV (GPS) RWY 19 CONROE/NORTH HOUSTON RGNL (CXXO)

▼ For uncompensated Baro-VNAV systems, LNAV/VNAV NA below -1.5°C (5°F) or above 48°C (118°F). DME/DME RNP-0.3 NA.
▲ Rwy 19 helicopter visibility reduction below ¾ SM NA.

MISSED APPROACH: Climb to 3100 direct JEVIB and left turn on track 077° to CLEEP and hold.

ATIS 118.325	HOUSTON APP CON 119.7 281.4	CONROE TOWER ★ 124.125 (CTAF)	GND CON 120.45	CLNC DEL 120.45	CLNC DEL 119.55 (When twr closed)
------------------------	---------------------------------------	---	--------------------------	---------------------------	--



3100

↑

JEVIB

✦

CLEEP

△

*LNAV only.

WETUD

2 NM to RW19

*1.2 NM to RW19

↓

RW19

↶

900*

OSRAW

2000

IPOME

2000

GP 3.00°

TCH 49

1.2 NM

0.8 NM

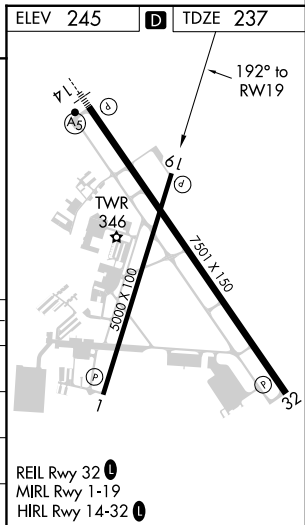
3.3 NM

6 NM

192°

2000

CATEGORY	A		B	C	D
LPV DA	527-1 290 (300-1)				
LNAV/VNAV DA	682-1½ 445 (500-1½)				
LNAV MDA	660-1 423 (500-1)	660-1¼ 423 (500-1¼)			
CIRCLING	700-1 455 (500-1)	880-1¾ 635 (700-1¾)	960-2¼ 715 (800-2¼)		



HOUSTON, TEXAS
Orig-A 22JUN17

30°21'N-95°25'W

CONROE/NORTH HOUSTON RGNL (CXXO) **RNAV (GPS) RWY 19**

SC-5, 05 OCT 2023 to 02 NOV 2023

SC-5, 05 OCT 2023 to 02 NOV 2023