

Flight Procedures Cover Page	Task Action: FLIGHT CHECK	Task Type: IAP	Estimated Chart Date: 02/20/2025	APWS Task ID: 8EED4088BCC848B68ADF80BB72BE12C4	APWS Project ID: FB92122B929342D7B2D3181905E5ECE6
Procedure: RNAV (RNP) Z RWY 27 AMDT 1		Enroute: NO	Specialist: Mitchell, Tyler		Agreement Number:
Airport ID: KCVG			Airport City: COVINGTON		State: KY
Facility ID:	Facility Type:	Flight Inspection Remark Type: New FC Slot			
<div>Procedure Comments: PROCEDURE REDESIGN</div> <div>APPROVAL LETTER - FIBSU MANDATORY ALT APPROVAL LETTER - ZALD MANDATORY ALT</div> <div>CONTACT CASIMIR TABAKA 405-954-7931</div> <div>QUALITY 26 CHECKED</div> <div>QUALITY 38 CHECKED</div>					

FIPC BASIC FORM							
PROCEDURE: RNAV (RNP) Z RWY 27 AMDT 1			AIRPORT NAME: CINCINNATI/NORTHERN KENTUCKY		AIRPORT ID: KCVG	SPECIAL CONTROL NO: AG-01-220-25	
FAC ID: KCVG27.01Z		CITY: COVINGTON			ST: KY	ORIG CHART DATE: 06/12/2025	
DFL TYPE: PROC/P	THIRD PARTY: <input type="checkbox"/> YES	EST. TIME ON SITE: 0.4	REIMB. NUMBER:		PTS TASK ID: 8EED4088BCC848B68ADF80BB72BE12C4		
PREFLIGHT NOTES							
REVIEWER:					DATE:		
COMMENTS:					CHECK ONE:		
					<input type="checkbox"/> FLT CK REQ <input type="checkbox"/> NFCR <input type="checkbox"/> REJECT		
							YES
					CPV COMPLETE?		X
PROCEDURE RESULTS							
INSPECTION DATE: 02/26/2025		CREW #: VN526	N #: N73	INSTRUMENT PROCEDURE STATUS: <input checked="" type="checkbox"/> SAT <input type="checkbox"/> SAT W/CHANGES <input type="checkbox"/> UNSAT		ARINC CODING: <input checked="" type="checkbox"/> SAT <input type="checkbox"/> SAT/GOLD <input type="checkbox"/> UNSAT	
FLIGHT INSPECTOR SIGNATURE: eric l geyer @ 02/26/2025 12:05			PRINTED NAME: GEYER, ERIC LEE			NOTAM INITIATED? <input type="checkbox"/> YES <input checked="" type="checkbox"/> NO	
FLIGHT INSPECTOR REMARKS: Cincinnati/Northern Kentucky INTL, Covington, KY, RNAV (RNP) Z RWY 27 AMDT 1. SAT. Modernization project with multiple new feeder legs. Comments: SIAP points need to be corrected to match Form F							
IN-FLIGHT OBSTACLE REPORT							
OBSTRUCTION ID #:	COORDINATES OR LOCATION:		GNSS ALTITUDE (MSL):		BAROMETRIC ALTITUDE (MSL):		HEIGHT ABOVE GROUND LEVEL:



FAA

Aviation Safety

Memorandum

Date: 01/09/2023

To: Manager, Instrument Flight Procedures Coordination Team

From: Manager, Flight Technologies and Procedures Division

Prepared by: Flight Procedures & Airspace Group

Subject: Approval Request; Memorandum Dated 12/12/2023

Wade Terrell
Signed By: Wade Terrell
Tue Jan 16 2024 10:28:08
GMT-06:00:00 (Central
Standard Time)

Your request to chart a mandatory crossing altitude of 6000 feet at FIBSU on the "RNAV (RNP) Z RWY 27, AMDT 1" at Cincinnati/Northern Kentucky Intl, Covington, KY was discussed at the Flight Standards Procedure Review Board on 01/04/2024 and is approved.

Please direct all inquiries to Sherri Hubbard, PRB Lead, Flight Procedures and Airspace Group, at (405) 954-6618.

Attachments



Federal Aviation Administration

Memorandum

To: Douglas F Rodzon, Acting Manager, Flight Technologies and Procedures Division
THRU: Wade E.K. Terrell, Manager, Flight Procedures and Airspace Group

From: Marlon J. Robinson, Manager, Instrument Flight Procedures (IFP)
Coordination Team, AJV-A45

Subject: Approval Request: Cincinnati/Northern Kentucky Intl, Covington, KY (KCVG)

Digitally signed by
CLIVE BOND
Dec 12, 2023

KCVG RNAV RNP Z RWY 27: FIBSU Mandatory Altitude.

KCVG TRACON requests AFS approval to chart a mandatory altitude restriction at the following fix: FIBSU at 6000ft MSL for the RNAV RNP Z RWY 27 instrument approach procedure for Cincinnati-Northern Kentucky International Airport (KCVG).

Currently, FAAO 8260.19I paragraph 8-6-10n (1) requires Flight Standards approval from the Flight Technologies and Procedures Division to chart a mandatory altitude on the intermediate segment of an instrument approach procedure.

Therefore, Cincinnati TRACON requests to chart the mandatory restriction at FIBSU on the RNAV RNP Z RWY 27. This is an ATC operational request to ensure vertical separation between aircraft on the approach and other TRACON traffic.



FAA

Aviation Safety

Memorandum

Date: 01/09/2023

To: Manager, Instrument Flight Procedures Coordination Team

From: Manager, Flight Technologies and Procedures Division

Prepared by: Flight Procedures & Airspace Group

Subject: Approval Request; Memorandum Dated 12/12/2023

Your request to chart a mandatory crossing altitude of 6000 feet at FIBSU on the “RNAV (RNP) Z RWY 27, AMDT 1” at Cincinnati/Northern Kentucky Intl, Covington, KY was discussed at the Flight Standards Procedure Review Board on 01/04/2024 and is approved.

Please direct all inquiries to Sherri Hubbard, PRB Lead, Flight Procedures and Airspace Group, at (405) 954-6618.

Attachments

CONCURRENCES
ROUTING SYMBOL
AFS-410 MANAGER
INITIALS/SIG
DATE
ROUTING SYMBOL
AFS-410B MANAGER
INITIALS/SIG
Merrill L. Armstrong Signed By: Merrill L. Armstrong Tue Jan 9 2024 15:08:30 GMT-06:00:00 (Central Standard Time)
DATE
ROUTING SYMBOL
AFS-420C MANAGER
INITIALS/SIG
DATE
ROUTING SYMBOL
AFS-420E MANAGER
INITIALS/SIG
Romana Wolf Signed By: Romana Wolf Fri Jan 12 2024 11:02:22 GMT-06:00:00 (Central Standard Time)
DATE
ROUTING SYMBOL
AFS-420W MANAGER
INITIALS/SIG
DATE
ROUTING SYMBOL
INITIALS/SIG
DATE
ROUTING SYMBOL
INITIALS/SIG
DATE
ROUTING SYMBOL
INITIALS/SIG
DATE
ROUTING SYMBOL
INITIALS/SIG
DATE



FAA

Aviation Safety

Memorandum

Date: 01/09/2023

To: Manager, Instrument Flight Procedures Coordination Team

From: Manager, Flight Technologies and Procedures Division

Prepared by: Flight Procedures & Airspace Group

Subject: Approval Request; Memorandum Dated 12/12/2023

Wade Terrell
Signed By: Wade Terrell
Tue Jan 16 2024 10:28:08
GMT-06:00:00 (Central
Standard Time)

Your request to chart a mandatory crossing altitude of 6000 feet at ZALED on the "RNAV (RNP) Z RWY 27, AMDT 1" at Cincinnati/Northern Kentucky Intl, Covington, KY was discussed at the Flight Standards Procedure Review Board on 01/04/2024 and is approved.

Please direct all inquiries to Sherri Hubbard, PRB Lead, Flight Procedures and Airspace Group, at (405) 954-6618.

Attachments



Federal Aviation Administration

Memorandum

To: Douglas F Rodzon, Acting Manager, Flight Technologies and Procedures Division
THRU: Wade E.K. Terrell, Manager, Flight Procedures and Airspace Group

From: Marlon J. Robinson, Manager, Instrument Flight Procedures (IFP)
Coordination Team, AJV-A45

Subject: Approval Request: Cincinnati/Northern Kentucky Intl, Covington, KY (KCVG)

Digitally signed by
CLIVE BOND
Dec 12, 2023

KCVG RNAV RNP Z RWY 27: ZALED Mandatory Altitude.

KCVG TRACON requests AFS approval to chart a mandatory altitude restriction at the following fix: ZALED at 6000ft MSL for the RNAV RNP Z RWY 27 instrument approach procedure for Cincinnati-Northern Kentucky International Airport (KCVG).

Currently, FAAO 8260.19I paragraph 8-6-10n (1) requires Flight Standards approval from the Flight Technologies and Procedures Division to chart a mandatory altitude on the intermediate segment of an instrument approach procedure.

Therefore, Cincinnati TRACON requests to chart the mandatory restriction at ZALED on the RNAV RNP Z RWY 27. This is an ATC operational request to ensure vertical separation between aircraft on the approach and other TRACON traffic.



FAA

Aviation Safety

Memorandum

Date: 01/09/2023

To: Manager, Instrument Flight Procedures Coordination Team

From: Manager, Flight Technologies and Procedures Division

Prepared by: Flight Procedures & Airspace Group

Subject: Approval Request; Memorandum Dated 12/12/2023

Your request to chart a mandatory crossing altitude of 6000 feet at ZALED on the "RNAV (RNP) Z RWY 27, AMDT 1" at Cincinnati/Northern Kentucky Intl, Covington, KY was discussed at the Flight Standards Procedure Review Board on 01/04/2024 and is approved.

Please direct all inquiries to Sherri Hubbard, PRB Lead, Flight Procedures and Airspace Group, at (405) 954-6618.

Attachments

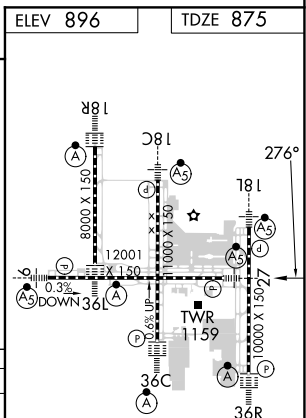
CONCURRENCES
ROUTING SYMBOL
AFS-410 MANAGER
INITIALS/SIG
DATE
ROUTING SYMBOL
AFS-410B MANAGER
INITIALS/SIG
Merrill Armstrong Signed By: Merrill Armstrong Tue Jan 9 2024 15:08:30 GMT-06:00:00 (Central Standard Time)
DATE
ROUTING SYMBOL
AFS-420C MANAGER
INITIALS/SIG
DATE
ROUTING SYMBOL
AFS-420E MANAGER
INITIALS/SIG
Romana Wolf Signed By: Romana Wolf Fri Jan 12 2024 11:02:22 GMT-06:00:00 (Central Standard Time)
DATE
ROUTING SYMBOL
AFS-420W MANAGER
INITIALS/SIG
DATE
ROUTING SYMBOL
INITIALS/SIG
DATE
ROUTING SYMBOL
INITIALS/SIG
DATE
ROUTING SYMBOL
INITIALS/SIG
DATE

23222

CINCINNATI/NORTHERN KENTUCKY INTL (CVG)

MISSED APPROACH: Climb to 3000 on track 276° SEMSE and on track 220° to AVIEW and hold.

CPDLC



AUTHORIZATION REQUIRED

CINCINNATI/NORTHERN KENTUCKY INTL (CVG)
39°03'N-84°40'W **RNAV (RNP) Z RWY 27**

HIRL all Rwy's
TDZ/CL all Rwy's except 27

SE-1, 05 OCT 2023 to 02 NOV 2023

APP CRS
276°

Rwy Idg
TDZE
875

12001
Apt Elev
896

RNAV (RNP) Z RWY 27

CINCINNATI/NORTHERN KENTUCKY INTL (CVG)

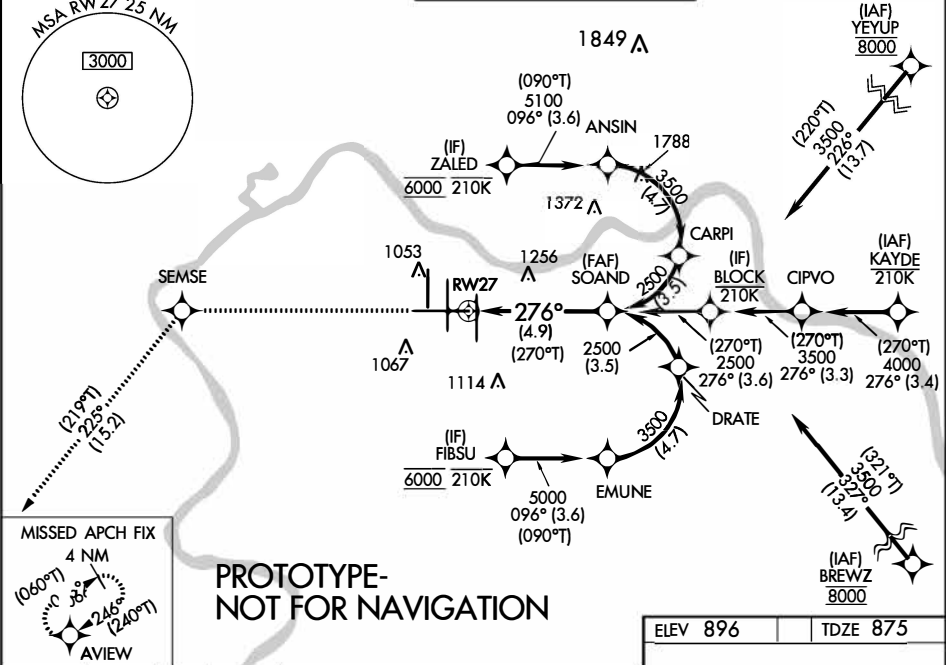
RNP AR APCH - GPS.

For uncompensated Baro-VNAV systems, procedure NA below -14°C or above 54°C. For inop ALS, increase RNP 0.15 all Cats visibility to RVR 5500, increase RNP 0.3 all Cats visibility to 1 3/8 SM.

MALSR

MISSED APPROACH: Climb to 3000 direct SEMSE and on track 225° to AVIEW and hold.

D-ATIS		CINCINNATI APP CON		CINCINNATI TOWER		GND CON	CLNC DEL	CPDLC
ARR	DEP	119.7	363.15 (090°-269°)	118.975	360.85 (RWY 18L/36R)			
134.375	135.3	123.875	363.15 (270°-089°)	118.3 (RWYS 18C/36C, 09/27)	133.325 (RWY 18R/36L)			



3000

SEMSE

tr 225°

AVIEW

VGSI and RNAV glidepath not coincident (VGSI Angle 3.00/TCH 67).

RW27

276°

270°T

2500

GP 3.00°

TCH 55

See planview for multiple IF locations.

4.9 NM

CATEGORY	A	B	C	D
RNP 0.15 DA	1244/35	369 (400-%)		
RNP 0.23 DA	1260 / 35	385 (400-%)		
RNP 0.30 DA	1364 / 50	489 (500-1)		

AUTHORIZATION REQUIRED

HIRL all Rwys

TDZ/CL all Rwys except 27

ELEV 896

TDZE 875

18L

18R

36L

36R

12001

1000 X 150

8000 X 150

1000 X 150

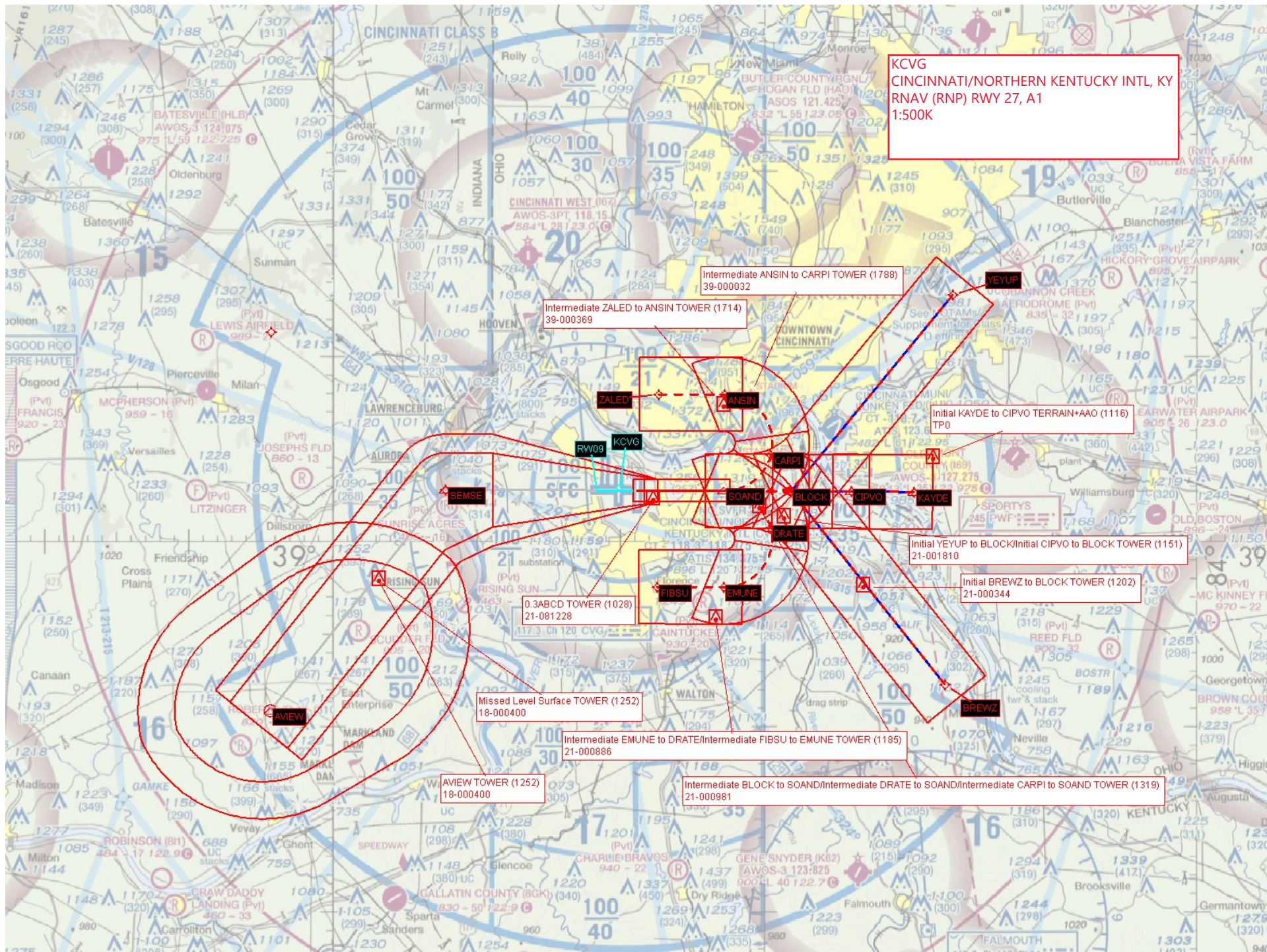
10000 X 150

TWR 1159

36C

36R

276°



KCVG
CINCINNATI/NORTHERN KENTUCKY INTL, KY
RNAV (RNP) RWY 27, A1
1:500K

Intermediate ANSIN to CARPI TOWER (1788)
39-00032

Intermediate ZALEZ to ANSIN TOWER (1714)
39-000369

Initial KAYDE to CIPVO TERRAIN+AAO (1116)
TP0

Initial YEYUP to BLOCK/Initial CIPVO to BLOCK TOWER (1151)
21-001810

Initial BREWZ to BLOCK TOWER (1202)
21-000344

0.3ABCD TOWER (1028)
21-081228

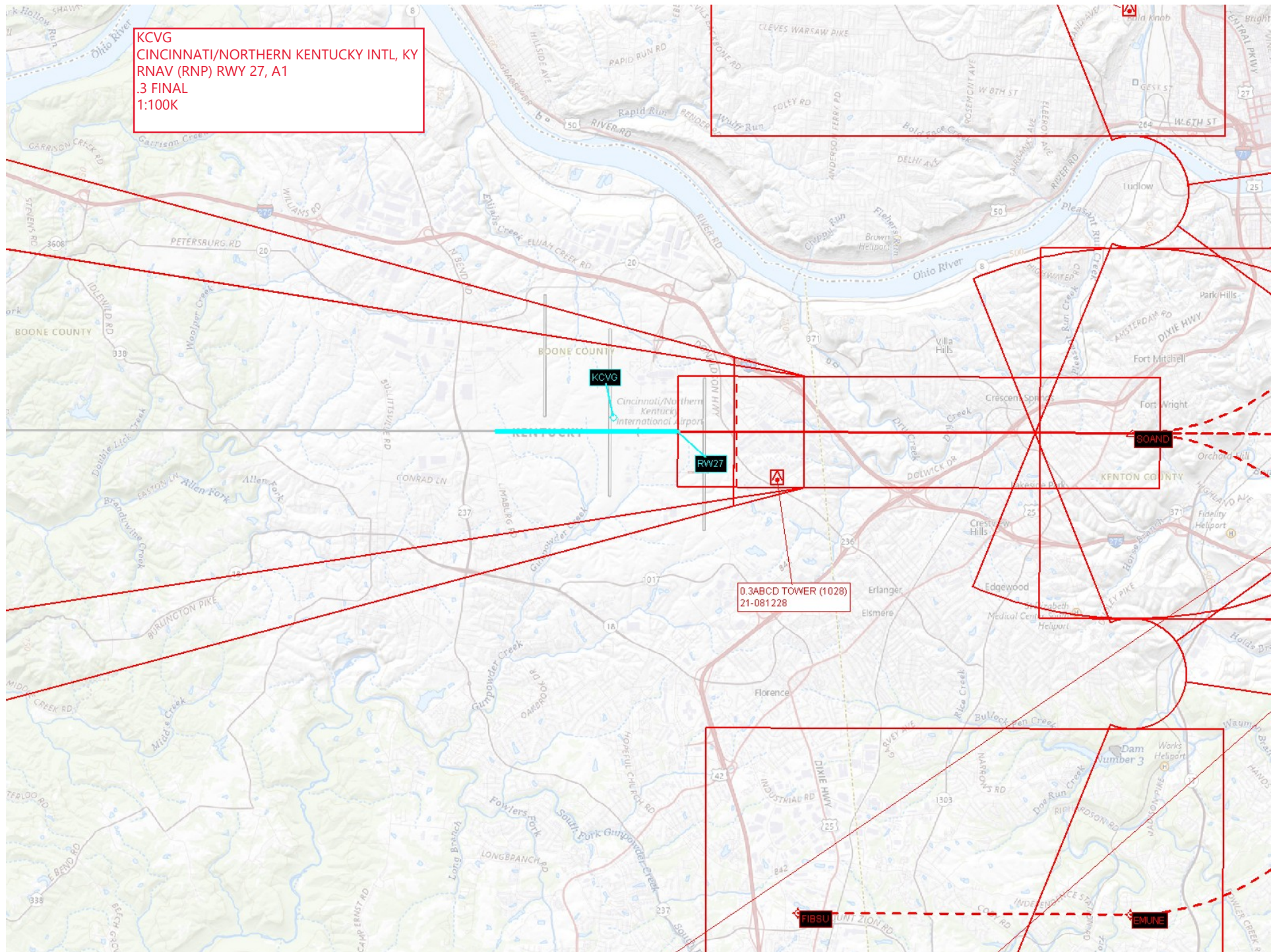
Missed Level Surface TOWER (1252)
18-000400

Intermediate EMUNE to DRATE/Intermediate FIBSU to EMUNE TOWER (1185)
21-000886

AVIEW TOWER (1252)
18-000400

Intermediate BLOCK to SOAND/Intermediate DRATE to SOAND/Intermediate CARPI to SOAND TOWER (1319)
21-000981

KCVG
CINCINNATI/NORTHERN KENTUCKY INTL, KY
RNAV (RNP) RWY 27, A1
.3 FINAL
1:100K



KCVG
CINCINNATI/NORTHERN KENTUCKY INTL, KY
RNAV (RNP) RWY 27, A1
.23 FINAL
1:100K

0.23ABCD TREE (1010)
21-071135

KCVG

Cincinnati/Northern
Kentucky
International Airport

RWY 27

SOUND

FISBL

ENGINE

KCVG
CINCINNATI/NORTHERN KENTUCKY INTL, KY
RNAV (RNP) RWY 27, A1
.15 FINAL
1:100K

Missed CG/HAT/CGTA CONTROL_TOWER (1159)
21-001297

0.15ABCD TREE (1004)
21-022673

Intermediate ZALED to ANSIN TOWER (1714)
39-000369

Intermediate ANSIN to CARPI TOWER (1788)
39-000032

Intermediate BLOCK to SOAND/Intermediate DRAKE to SOAND/Intermediate CARPI to SOAND TOWER (1319)
21-000981