

Flight Procedures Cover Page	Task Action: Amendment	Task Type: IAP	Estimated Chart Date: 04/23/2020	APWS Task ID: 8E26D2451F964AB39945D4D6F4B5A4F6	APWS Request ID: A17AD24463644AFF98FC80D00AAE4899
Procedure: APPROACH VOR/DME RWY 18 R AMDT 5F		Enroute: NO	Specialist: Miles, Alexander		Agreement Number:
Airport ID: KMCO	Airport Name: ORLANDO INTL		Airport City: ORLANDO		State: FL
Facility ID:	Facility Type:	Flight Inspection Remark Type:			
<div>Procedure Comments: P-NOTAM NEW CIRCLING AREAS PROCESSED IAW AIRCRAFT OPERATIONS GROUP (AJW-33) MEMO, OCTOBER 3, 2018, SUBJECT: FLIGHT INSPECTION REVIEW NOT REQUIRED. DAVE DANNER, 405-954-5077</div> <div>QUALITY 6 CHECKED SN 2/10/20</div> <div>QUALITY 41 CHECKED DNAC</div>					

ORLANDO, FLORIDA

AL-571 (FAA)

19059

VORTAC ORL	APP CRS	Rwy Idg	12005
112.2	176°	TDZE	94
Chan 59		Apt Elev	96

OLD

VOR/DME RWY 18R  
ORLANDO INTL (MCO)

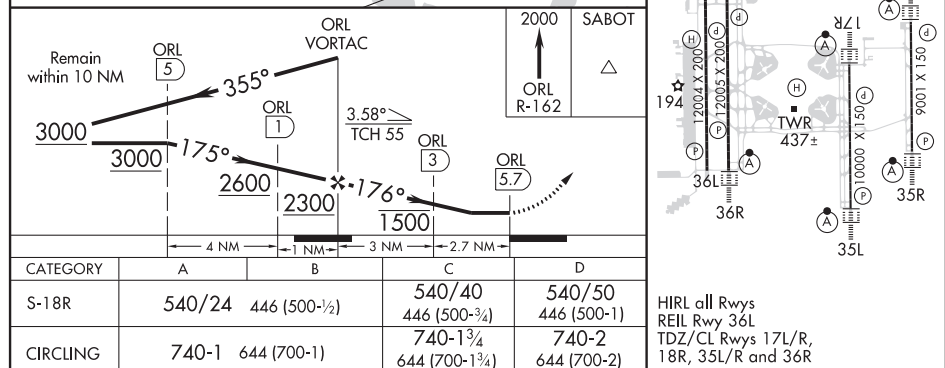
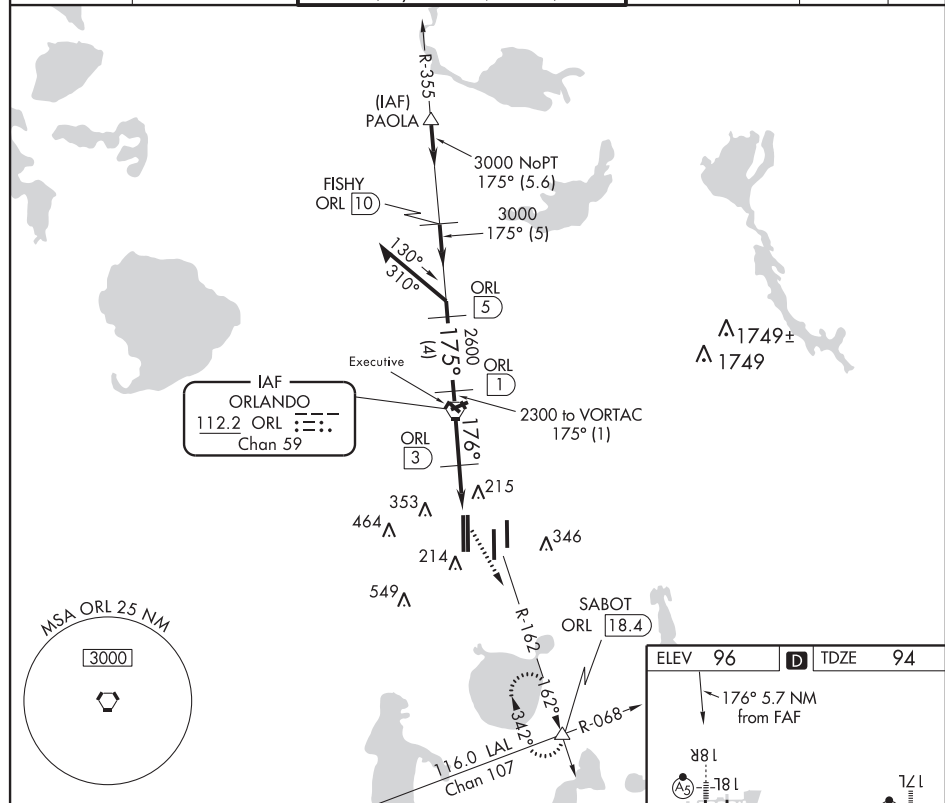


MISSED APPROACH: Climb to 2000 via  
ORL R-162 to SABOT INT and hold.

D-ATIS	ORLANDO APP CON	ORLANDO TOWER	GND CON	CLNC DEL	CPDLC
ARR 121.25	124.8 307.0	124.3 (Rwys 18L-36R, 18R-36L)	126.4 275.8 (East)	134.7	
DEP 120.525		118.45 (Rwys 17L-35R, 17R-35L)	121.8 275.8 (West)	341.7	

SE-3, 02 JAN 2020 to 30 JAN 2020

SE-3, 02 JAN 2020 to 30 JAN 2020



ORLANDO, FLORIDA  
Amdt 5E 29JUL10

28°26'N-81°19'W

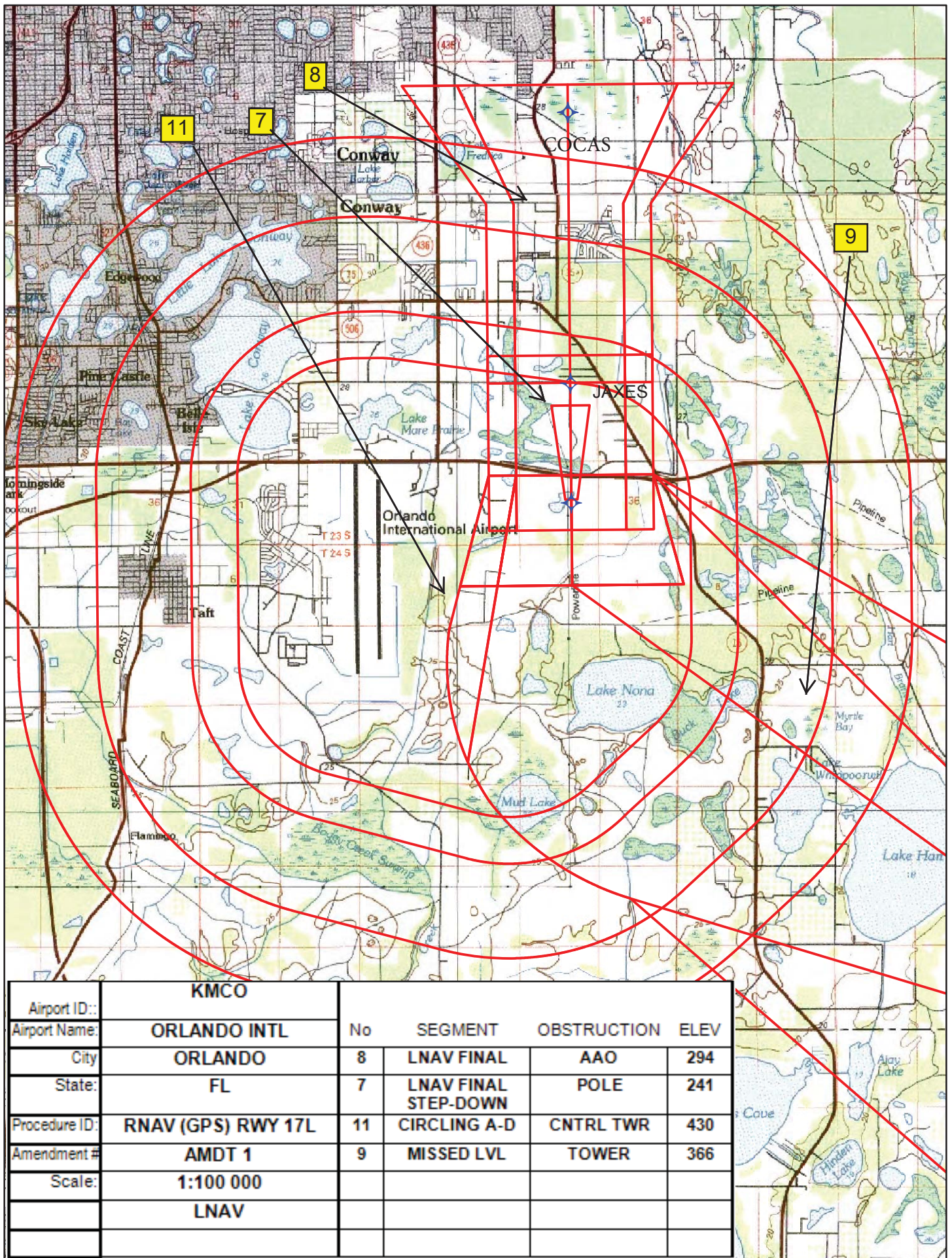
ORLANDO INTL (MCO)  
VOR/DME RWY 18R

## STANDARD INSTRUMENT APPROACH PROCEDURE DATA RECORD

## PART - A OBSTRUCTION DATA

1. APP SEGMENT		FROM	TO	OBSTRUCTION	COORDINATES	ELEV. MSL	ROC	ALT. ADJUSTMENTS	MIN. ALT.		
INITIAL	KAKEY	HERVI	1. TOWER (12-002970)	283820.56N/0811657.87W	333 (1A)	1000	AT2667	4000			
			2. TERRAIN	283800.00N/0811557.00W	109 (100)		AS1500	1600			
INTERMEDIATE	HERVI	FONIK	3. TOWER (12-001931)	283539.00N/0811805.00W	411 (5D)	500	AT2089	3000			
			2. TERRAIN	283800.00N/0811557.00W	109 (100)		AS1500	1600			
INTERMEDIATE:	FONIK	SEEDO	3. TOWER (12-001931)	283539.00N/0811805.00W	411 (5D)	500	AT1589	2500			
STEPDOWN			4. TERRAIN	283403.00N/0811448.00W	98 (100)		AS1500	1600			
INTERMEDIATE:	SEEDO	COCAS	5. AAO	283042.00N/0811630.00W	308 (4D)	500	AT632 AC50	1500			
STEPDOWN			6. TERRAIN	283112.00N/0811609.00W	105 (100)		AS1000	1100			
FINAL: LPV	COCAS	RW17L				ASC		290/200			
FINAL: LNAV/VNAV	COCAS	RW17L	7. POLE (KMCOT000224)	282744.53N/0811718.02W	241 (1A)	21.98:1		515/425			
FINAL: LNAV	COCAS	JAXES/1.31 NM TO RW17L	8. AAO	283000.50N/0811713.07W	294 (2C)	250		560			
FINAL: LNAV STEPDOWN	JAXES/1.31 NM TO RW17L	RW17L	7. POLE (KMCOT000224)	282744.53N/0811718.02W	241 (1A)	250		500			
2. PROCEDURE TURN	NA										
3. MISSED APPROACH	MAP: DA / DA / RW17L	PRESK				ASC		3000			
	ELEV: 123/354/400		9. TOWER (12-003371)	282429.10N/0811404.90W	366 (1A)	1000		1400			
			10. TERRAIN	282048.00N/0811221.00W	108 (100)		AS1500	1600			
4. CIRCLING AREA	DISTANCE	HT. ABV. ARPT.									
CATEGORY A	1.3 NM	REQUIRED	350	ACTUAL	644	11. C-TWR (12-004633)	282537.96N/0811828.23W	430 (1A)	300		740
CATEGORY B	1.5 NM		450		644	11. C-TWR (12-004633)	282537.96N/0811828.23W	430 (1A)	300		740
CATEGORY C	1.7 NM		450		644	11. C-TWR (12-004633)	282537.96N/0811828.23W	430 (1A)	300		740
CATEGORY D	2.3 NM		550		644	11. C-TWR (12-004633)	282537.96N/0811828.23W	430 (1A)	300		740
CATEGORY E	4.5 NM		550								
5. MINIMUM SAFE ALTITUDES	PRIMARY NAVAID: RW17L										
SECTOR	OBSTRUCTION	BRG/DIST	ELEVATION (MSL)	M S A	SECTOR	OBSTRUCTION	BRG/DIST	ELEVATION (MSL)	M S A		
360-360	TWR (12-004140)	131/16.9	1948 (2C)	3000							
CITY AND STATE	ELEVATION: 96		FACILITY		PROCEDURE AND AMENDMENT NO:			REGION			
ORLANDO, FL	AIRPORT NAME: ORLANDO INTL		RNAV		RNAV (GPS) RWY 17L, AMDT 1			ASO			





Map from KMCO RNAV (GPS) RWY 17L showing new circling areas and controlling obstacles