

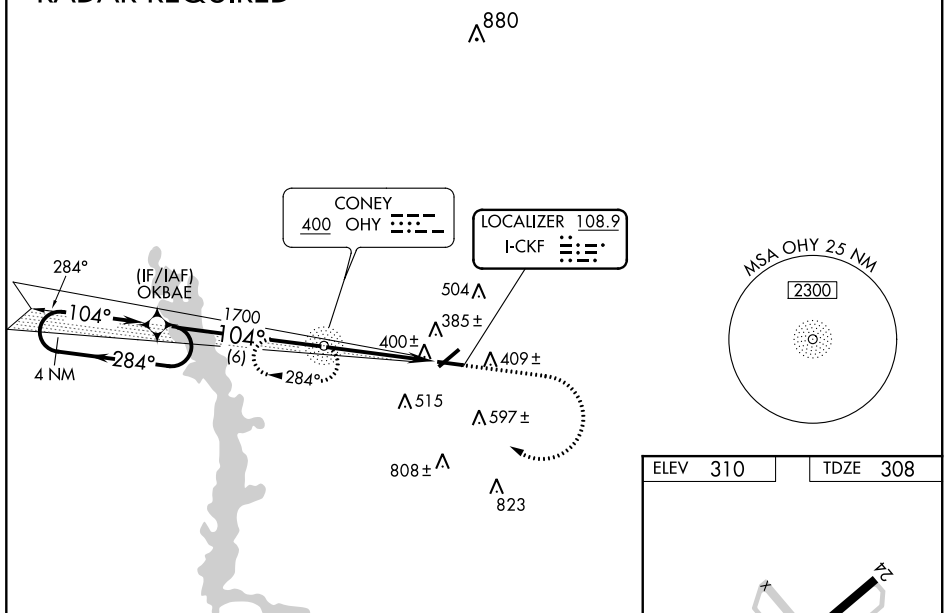
Flight Procedures Cover Page	Task Action: FLIGHT CHECK	Task Type: IAP	Estimated Chart Date: 09/08/2022	APWS Task ID: 8D9243BBB9B645F38D13975B9B76C428	APWS Project ID: 67B60C2BB7A541688522C5C4884BBFF8
Procedure: LOC RWY 10 AMDT 1A		Enroute: NO	Specialist: Ulvestad, Arthur		Agreement Number:
Airport ID: KCKF			Airport City: CORDELE		State: GA
Facility ID:	Facility Type:	Flight Inspection Remark Type: New FC Slot			
<div>Procedure Comments: PROCESSED IAW TECHNICAL SUPPORT GROUP (AJF-17) MEMO DATED 07/07/2021 SUBJECT: GUIDANCE FOR PROCEDURAL CHANGES REQUIRING FLIGHT INSPECTION/VALIDATION</div> <div>P-NOTAM</div> <div>INCORPORATED NOTAM !FDC 2/4166</div> <div>CONTACT DONALD E SMITH 405-954-8222</div> <div>2/4996</div> <div>QUALITY 38 CHECKED</div> <div>QUALITY 8 CHECKED</div>					

LOC I-CKF 108.9	APP CRS 104°	Rwy Idg 5001 TDZE 308 Apt Elev 310
---------------------------	------------------------	--

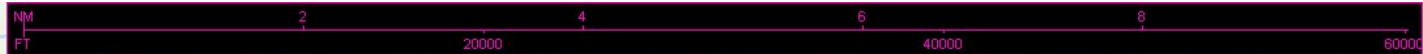
LOC RWY 10

CRISP COUNTY-CORDELE (CKF)

<p>▽ Rwy 10 helicopter visibility reduction below 1 SM NA. ADF required. Circling Rwy 28 NA at night. When local altimeter setting not received, use Albany altimeter setting and increase all MDA 100 feet and increase S-10 Cat C/D visibility $\frac{1}{8}$ SM and Circling Cat C/D visibility $\frac{1}{4}$ SM. Inop table does not apply to S-10. Inop table does not apply to S-10 Cat A/B when using Albany altimeter setting. For inop ALS, when using Albany altimeter setting increase S-10 Cat C/D visibility to $\frac{1}{8}$ SM.</p> <p>△ NA</p>	<p>ODALS</p>	<p>MISSED APPROACH: Climb to 800 then climbing right turn to 2200 direct OHY NDB and hold, continue climb-in-hold to 2200.</p>
--	--------------	--

AWOS-3PT
119.325JACKSONVILLE CENTER
125.75 226.8UNICOM
123.050 (CTAF) 0RNAV 1-GPS or
RADAR REQUIRED

4 NM Holding Pattern OKBAE		800		2200		OHY	
2200 ← 284°		104° →		104°		3.08°	
1700		OHY NDB		TCH 42		1700	
6 NM		4.2 NM		104° 4.2 NM from FAF		MRL Rwy 10-28 0	
CATEGORY		A		B		C	
S-10		660-1		352 (400-1)		D	
CIRCLING		760-1 450 (500-1)		820-1 510 (600-1)		1080-2 $\frac{1}{4}$ 770 (800-2 $\frac{1}{4}$)	
						1160-2 $\frac{3}{4}$ 850 (900-2 $\frac{3}{4}$)	
						FAF to MAP 4.2 NM	
						Knots	
						Min:Sec	
						4:12	
						2:48	
						2:06	
						1:41	
						1:24	



1" = 6333 feet

AIRPORT ID: KCKF
AIRPORT: CRISP COUNTY-CORDELE
CITY/ST: CORDELE, GA
PROC ID: LOC RWY 10
AMDT: 1A
CIRCLING
SCALE 1:100,000

Circling CAT A SIGN (458)
13-140131

Circling CAT B TOWER (520)
13-003777

Circling CAT C TOWER (725)
13-104096

Circling CAT D TOWER (808)
13-003819

