

Flight Procedures Cover Page	Task Action: FLIGHT CHECK	Task Type: IAP	Estimated Chart Date: 02/20/2025	APWS Task ID: 8D173AE9788C40129A7A9C5AADDCC19F	APWS Project ID: 6B893E476D8F4860A5572AB5B6D40554
Procedure: RNAV (GPS) RWY 17 AMDT 1		Enroute: NO	Specialist: Denton, Hope		Agreement Number:
Airport ID: KGYB			Airport City: GIDDINGS		State: TX
Facility ID:	Facility Type:	Flight Inspection Remark Type: New FC Slot			
<div>Procedure Comments:</div> <div>UTILIZED ACTIVE DATA FOR KGYB AIRPORT AND RUNWAYS.</div> <div>CONTACT CASIMIR TABAKA: AJV-A432, 405-202-7857.</div> <div><div>QUALITY 41 CHECKED</div><div>QUALITY 34 CHECKED</div></div>					

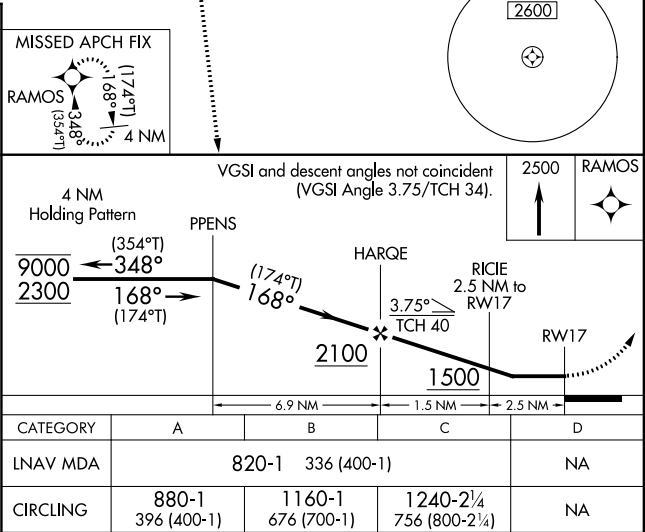
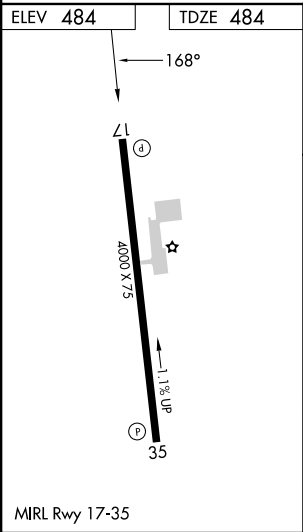
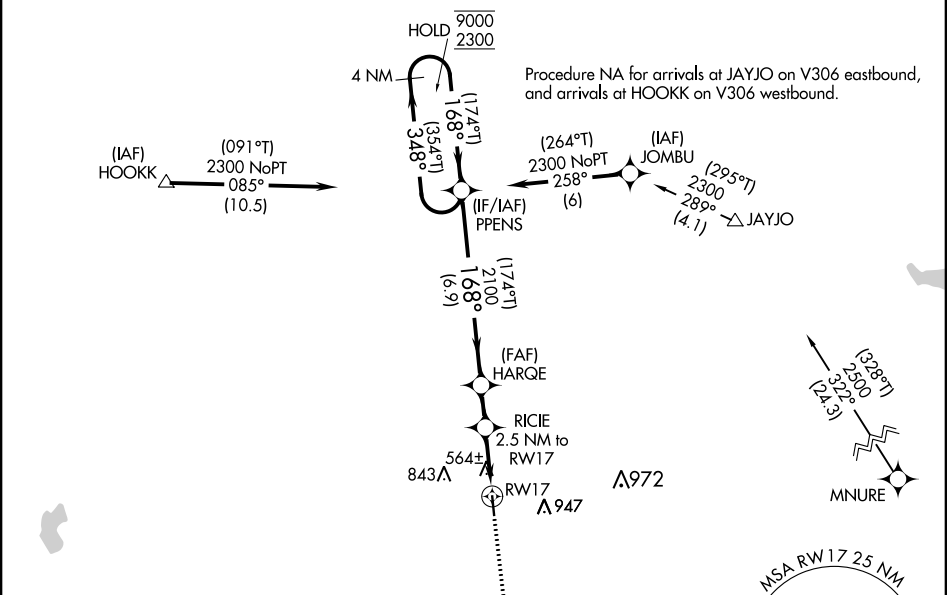
APP CRS	Rwy Idg	4000
168°	TDZE	484
	Apt Elev	484

RNAV (GPS) RWY 17
GIDDINGS-LEE COUNTY (GYB)

RNP APCH - GPS.	MISSED APPROACH: Climb to 2500 direct RAMOS and hold.
▼ Procedure NA at night. Rwy 17 helicopter visibility reduction below 1 SM NA. When local altimeter setting not received, use AUS altimeter setting and increase all MDAs 100 feet and LNAV visibility Cat C ¼ SM, and Circling visibility Cat C ¼ SM.	

AWOS-3 119.225	AUSTIN APP CON 127.225 317.65	UNICOM 123.05 (CTAF)
-------------------	----------------------------------	-------------------------

PROTOTYPE-NOT FOR NAVIGATION



GIDDINGS, TEXAS

22027

APP CRS
168°

Rwy Idg **4000**
TDZE **484**
Apt Elev **484**

OLD

RNAV (GPS) RWY 17
GIDDINGS-LEE COUNTY (GYB)

▼ DME/DME RNP-0.3 NA. Helicopter
▲ Procedure NA at night. When
altimeter setting and increase all MDA 100 feet; increase visibility Cat C ¼ SM.

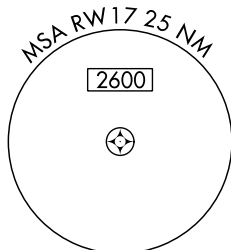
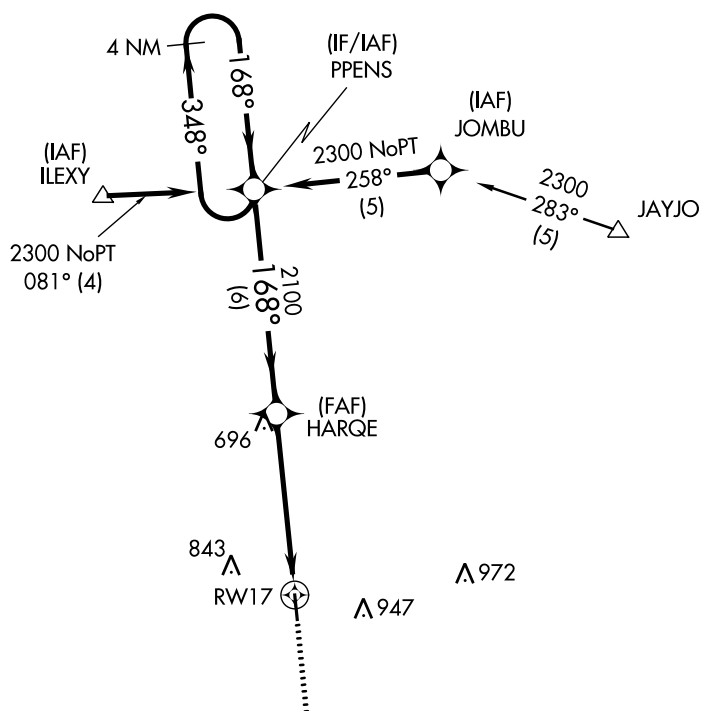
Bergstrom Intl

MISSED APPROACH:
Climb to 2500 direct
RAMOS and hold.

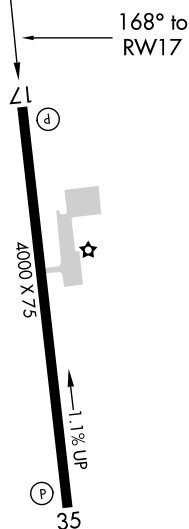
AWOS-3
119.225

AUSTIN APP CON
127.225 317.65

UNICOM
123.05 (CTAF)



ELEV **484** TDZE **484**



MISSED APCH FIX

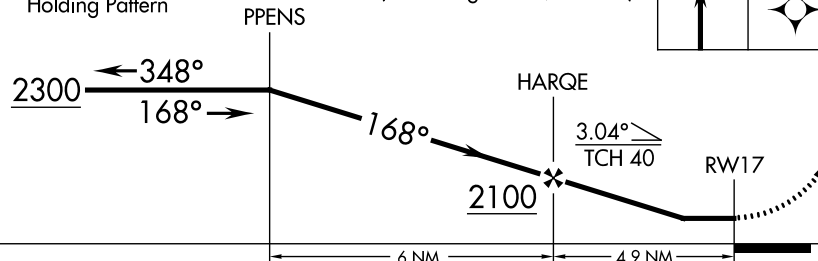


4 NM
Holding Pattern

VGSI and descent angles not coincident
(VGSI Angle 3.75/TCH 34).

2500

RAMOS



CATEGORY	A	B	C	D
LNAV MDA	940-1 456 (500-1)	940-1 456 (500-1)	940-1 456 (500-1)	NA
CIRCLING	940-1 456 (500-1)	1160-1 676 (700-1)	1240-2 756 (800-2)	NA

MIRL Rwy 17-35

GIDDINGS, TEXAS
Orig-B 27JAN22

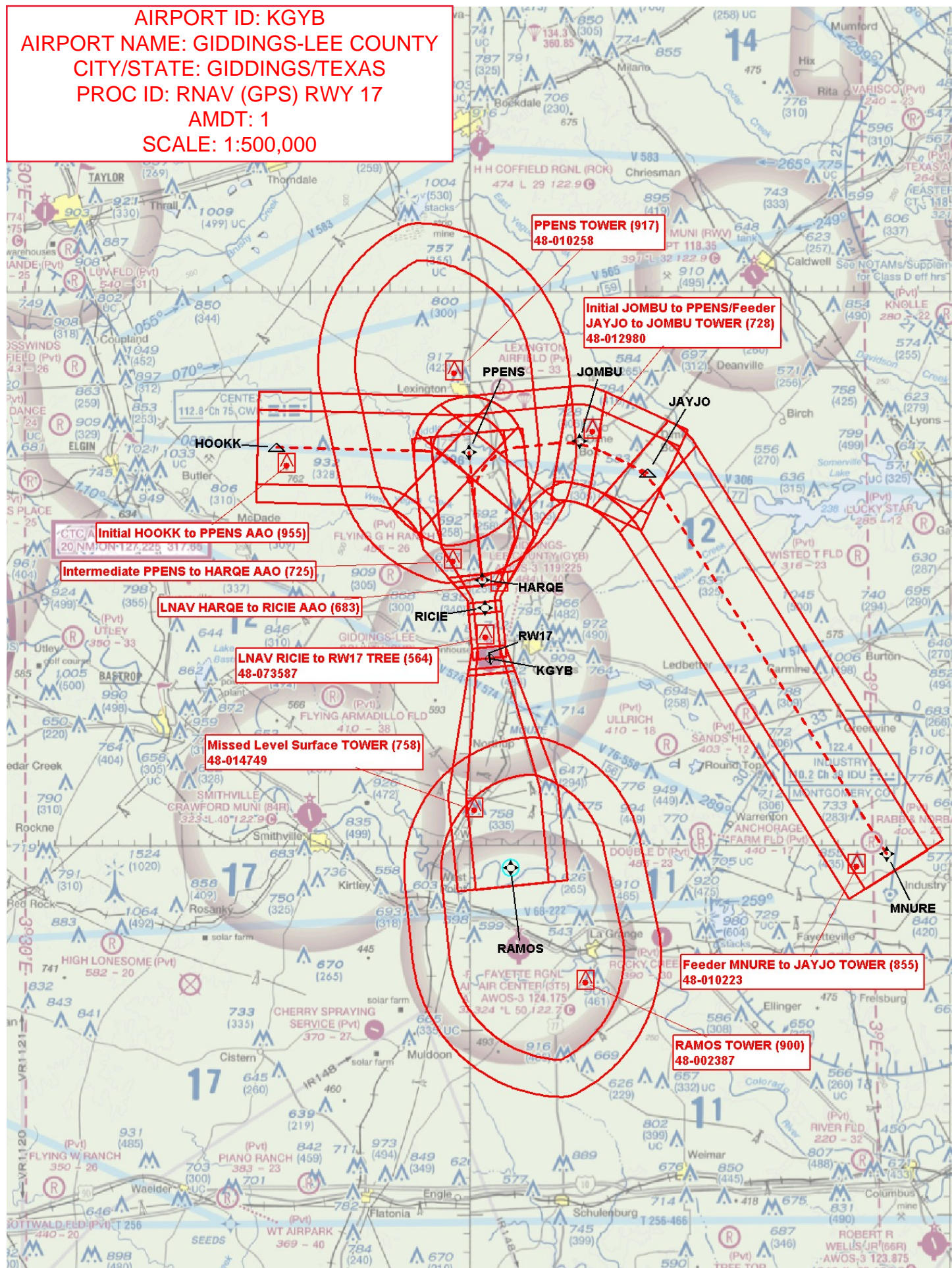
30°10'N-96°59'W

GIDDINGS-LEE COUNTY (GYB)
RNAV (GPS) RWY 17

SC-5, 05 SEP 2024 to 03 OCT 2024

SC-5, 05 SEP 2024 to 03 OCT 2024

AIRPORT ID: KGYB
AIRPORT NAME: GIDDINGS-LEE COUNTY
CITY/STATE: GIDDINGS/TEXAS
PROC ID: RNAV (GPS) RWY 17
AMDT: 1
SCALE: 1:500,000



AIRPORT ID: KGYB
AIRPORT NAME: GIDDINGS-LEE COUNTY
CITY/STATE: GIDDINGS/TEXAS
PROC ID: RNAV (GPS) RWY 17
AMDT: 1
SCALE: 1:100,000
LNAV, CIRCLING

