

Flight Procedures Cover Page	Task Action: P-NOTAM	Task Type: IAP	Estimated Chart Date: 05/20/2021	APWS Task ID: 8CF596FBCCC542518EBDBC440CE63BF1	APWS Project ID: 0A561AAE926045F1BE67D091CBD91C53
Procedure: RNAV (GPS) RWY 1 AMDT 0A		Enroute: NO	Specialist: Martinez, Rafael		Agreement Number:
Airport ID: M54			Airport City: LEBANON		State: TN
Facility ID:	Facility Type:	Flight Inspection Remark Type:			
<p>Procedure Comments:</p> <p>P-NOTAM.</p> <p>THIS CANCELS FDC 0/6288.</p> <p>ORDER 8260.3, CHAPTER 2, NEW CIRCLING CRITERIA APPLIED.</p> <p>CONTACT: LONNIE EVERHART 405-954-4576/DAVID TEFFETELLER 202-267-5177.</p>					

QUALITY
18
CHECKED

QUALITY
26
CHECKED

WAAS CH 65809 W01A	APP CRS 009°	Rwy Idg TDZE 588 Apt Elev 588
--	------------------------	---

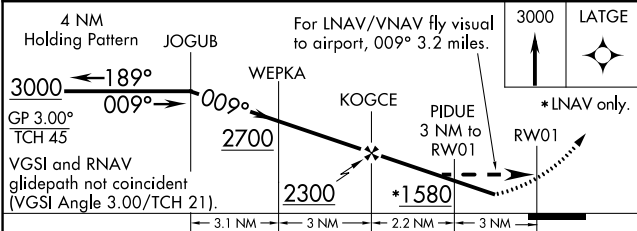
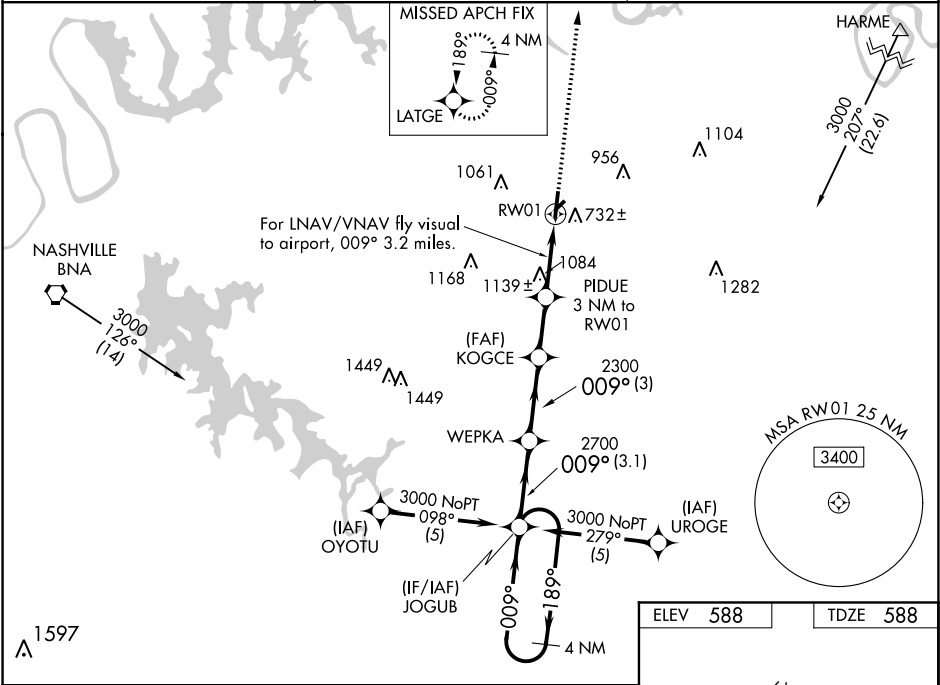
RNAV (GPS) RWY 1
LEBANON MUNI (M54)

NA

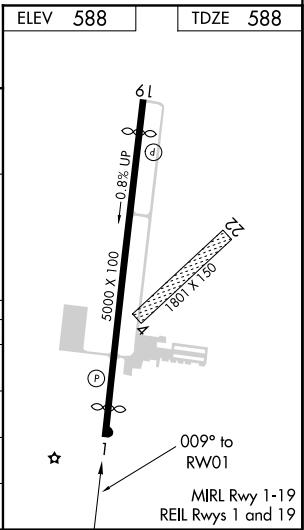
For uncompensated Baro-VNAV systems, LNAV/VNAV NA below -16° C (4° F) or above 47° C (116° F). DME/DME RNP-0.3 NA. Visibility reduction by helicopters NA. When local altimeter setting not received, use Nashville Intl altimeter setting and increase LPV DA 43 feet and all MDA 60 feet, increase LPV all Cats. visibility ¼ mile and Circling Cat. D visibility ¼ mile. LNAV/VNAV NA when using Nashville Intl altimeter setting.

MISSED APPROACH:
Climb to 3000 direct LATGE and hold.

AWOS-3 118.325	NASHVILLE APP CON 118.4 360.7	UNICOM 122.725 (CTAF)
--------------------------	---	---------------------------------



CATEGORY	A	B	C	D
LPV DA	1088-1¾ 500 (500-1¾)			
LNAV/VNAV DA	1663-2 1075 (1100-2)	1663-3 1075 (1100-3)		
LNAV MDA	1400-1 812 (900-1)	1400-1¼ 812 (900-1¼)	1400-2½ 812 (900-2½)	1400-2¾ 812 (900-2¾)
CIRCLING	1400-1 812 (900-1)	1400-1¼ 812 (900-1¼)	1400-2½ 812 (900-2½)	1440-2¾ 852 (900-2¾)



SE-1, 25 FEB 2021 to 25 MAR 2021

SE-1, 25 FEB 2021 to 25 MAR 2021

KM54
LEBANON MUNI
LEBANON, TN
RNAV (GPS) RWY 1, ORIG-A
CIRCLING 1:100,000

