

Flight Procedures Cover Page	Task Action: Abbreviated Amendment	Task Type: IAP	Estimated Chart Date: 08/10/2023	APWS Task ID: 8BD29CE3783144489E64B46C2EC9939E	APWS Project ID: 4CDE85573B0348D0BD22425338D3376B
Procedure: VOR RWY 17 AMDT 1E		Enroute: NO	Specialist: Boone-walt, Rose		Agreement Number:
Airport ID: KAEL			Airport City: ALBERT LEA		State: MN
Facility ID: AEL	Facility Type: VOR_DME	Flight Inspection Remark Type:			
<div>Procedure Comments: Processed IAW Technical Support Group (AJF-17) Memo dated 07/07/2021, Subject: Guidance for Procedural Changes Requiring Flight Inspection/Validation</div> <div>CONTACT: JASON KRETSCHMER AJV-A421 LEAD: 405.954.4019</div> <div>06/30/23: THIS IS A CORRECTED COPY OF THE FORM APPROVED ON 05/11/23.</div> <div>1. CHANGED CHART NOTE FROM "RWY 17 HELICOPTER VISIBILITY REDUCTION BELOW 3/4 NOT AUTHORIZED" TO "CHART NOTE: RWY 17 HELICOPTER VISIBILITY REDUCTION BELOW 3/4 SM NOT AUTHORIZED".</div> <div>2. CHANGED AMENDMENT NUMBER FROM "1C" TO "1D" IN LINE 2 OF BASIC INFORMATION BLOCK.</div> <div><div>Digitally signed by <b>JASON KRETSCHMER</b> Jun 30, 2023</div><div><div>QUALITY 40 CHECKED</div><div><div>QUALITY 33 CHECKED</div><div>QUALITY 34 CHECKED</div></div></div></div>					

ALBERT LEA, MINNESOTA

AL-5420 (FAA)

22027

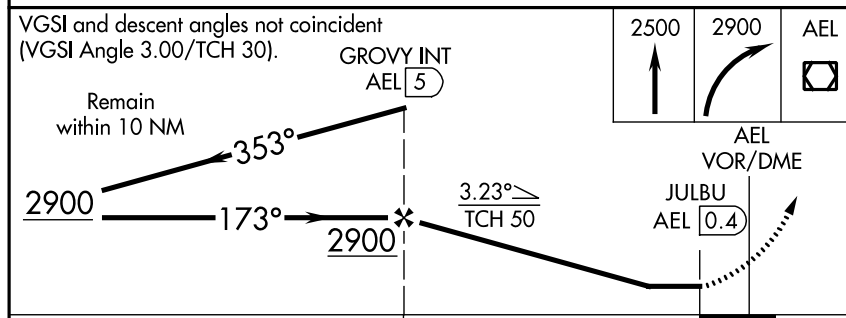
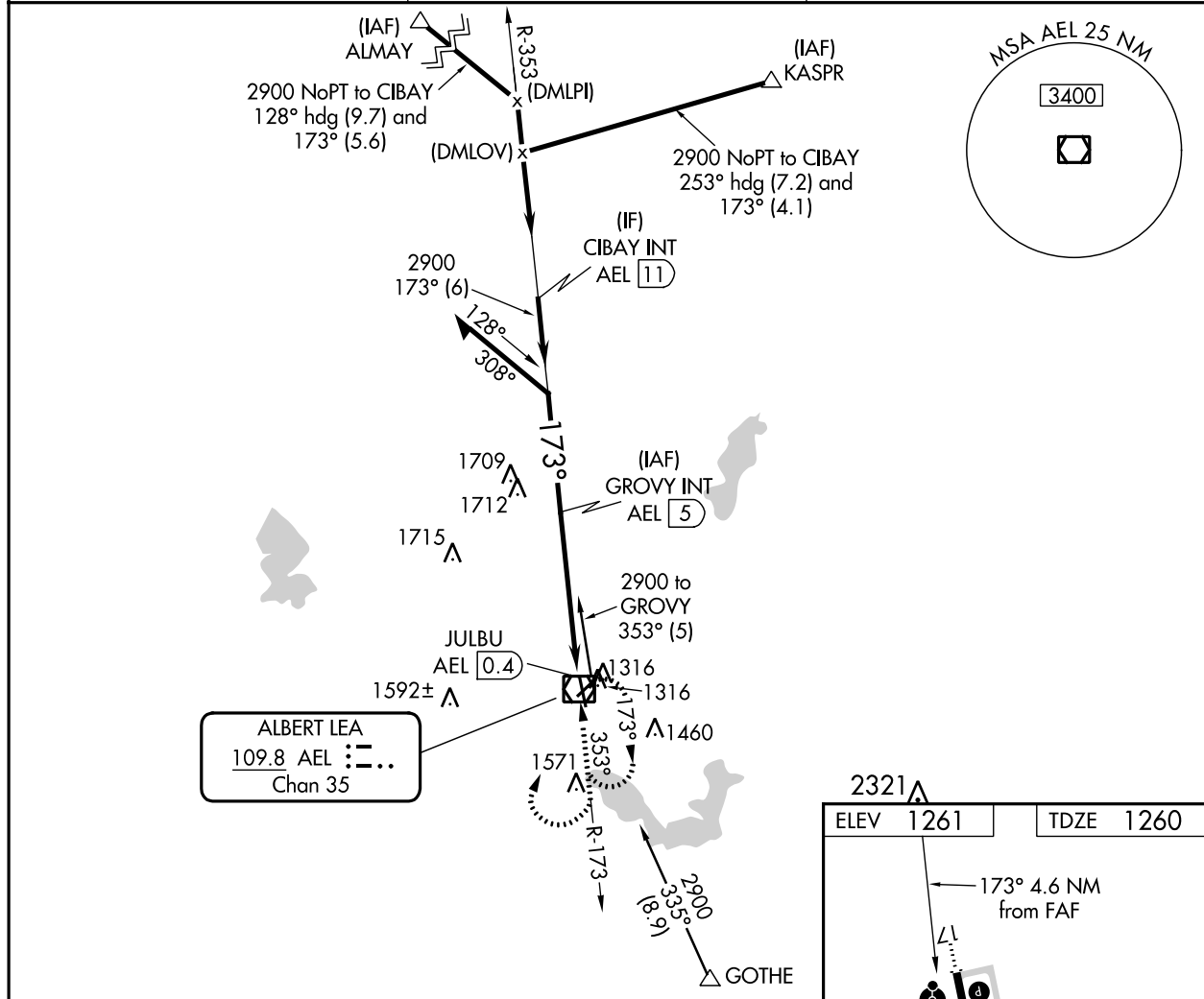
VOR/DME AEL <b>109.8</b> Chan <b>35</b>	APP CRS <b>173°</b>	Rwy Idg TDZE Apt Elev	<b>5000</b> <b>1260</b> <b>1261</b>
---	------------------------	-----------------------------	---

# VOR RWY 17

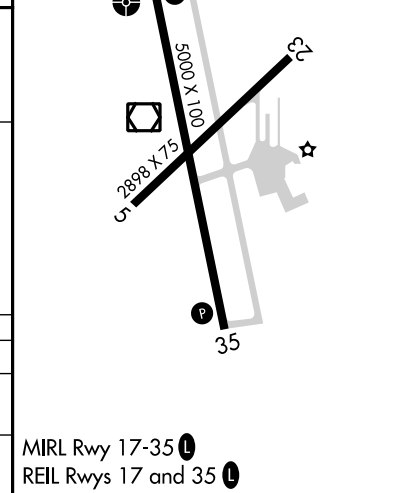
ALBERT LEA MUNI (AEL)

DME required.	ODALS	MISSED APPROACH: Climb to 2500 then climbing right turn to 2900 direct AEL VOR/DME and hold.
<p><b>▼</b> Circling Rwy 5, 23 NA at night. Rwy 17 helicopter visibility reduction below <math>\frac{3}{4}</math> SM NA. When local altimeter setting not received, use Austin altimeter setting: increase all MDA 60 feet; increase S-17 Cat C/D visibility <math>\frac{1}{2}</math> SM and Circling Cat A/C/D visibility <math>\frac{1}{4}</math> SM.</p>		

AWOS-3 <b>109.8</b>	ROCHESTER APP CON ★ <b>119.8 251.125</b>	UNICOM <b>123.0</b> (CTAF) <b>0</b>
------------------------	---	--



CATEGORY	A	B	C	D
S-17	2020-1 760 (800-1)	2020-2 760 (800-2)		
CIRCLING	2020-1 759 (800-1)	2020-1¼ 759 (800-1¼)	2020-2¼ 759 (800-2¼)	2040-2½ 779 (800-2½)



ALBERT LEA, MINNESOTA  
Amdt 1D 27JAN22

43°41'N-93°22'W

ALBERT LEA MUNI (AEL)  
VOR RWY 17

NC-1, 23 FEB 2023 to 23 MAR 2023