

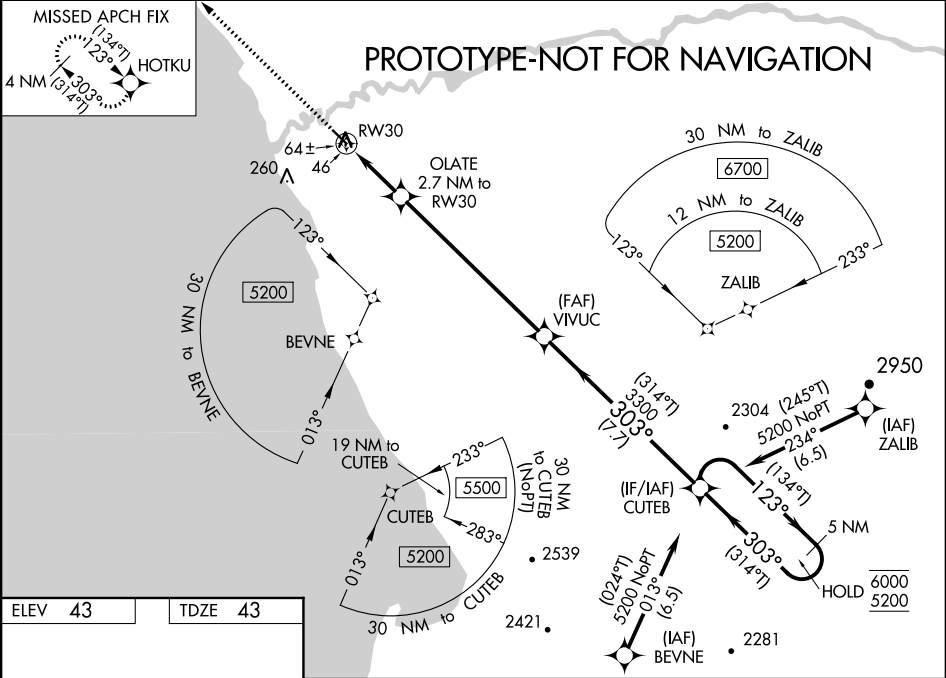
Flight Procedures Cover Page	Task Action: FLIGHT CHECK	Task Type: IAP	Estimated Chart Date: 01/27/2022	APWS Task ID: 8B104148EBC847D08D18FE17C9B21E37	APWS Project ID: C9F4D55F78FB499F98F68BA02BF5934C
Procedure: RNAV (GPS) RWY 30 AMDT 1A		Enroute: NO	Specialist: Feronti, Tia		Agreement Number:
Airport ID: PAQH		Airport City: QUINHAGAK		State: AK	
Facility ID:	Facility Type:	Flight Inspection Remark Type: New FC Slot			
<p>Procedure Comments: PENDING AIRPORT AND RUNWAY DATA USED. CANCEL NOTAM FDC 0/7834 UPON PUBLICATION. CONTACT DON LANIER 405-954-8242.</p> <div style="text-align: right;"> <p>J ZEDER 10/28/2021</p> <p>QUALITY 9 CHECKED</p> <p>QUALITY 16 CHECKED</p> </div>					

WAAS CH 58310 W30A	APP CRS 303°	Rwy Idg 4000 TDZE 43 Apt Elev 43
--	------------------------	---

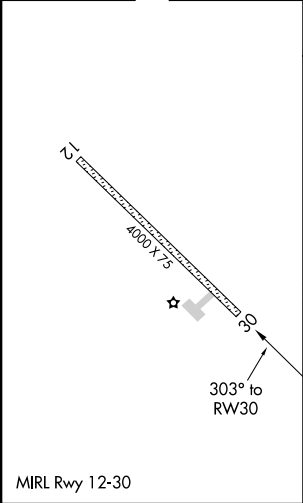
RNAV (GPS) RWY 30
QUINHAGAK (AQH) (PAQH)

RNP APCH - GPS.		MISSED APPROACH: Climb to 2500 direct HOTKU and hold, continue climb-in-hold to 2500.
▼ ▲ For uncompensated Baro-VNAV systems, LNAV/VNAV NA below -25°C or above 54°C.		

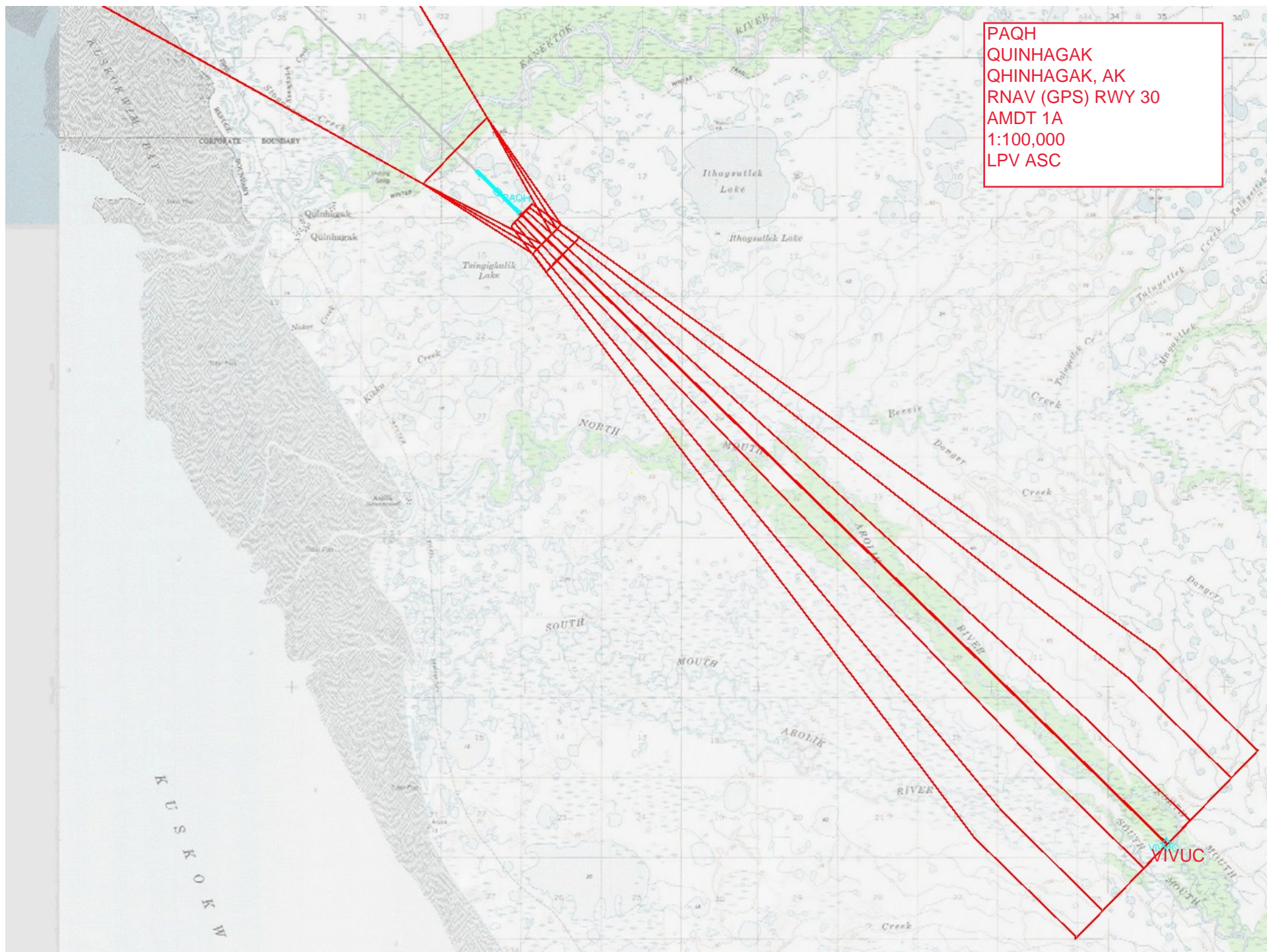
AWOS-3P 121.575	ANCHORAGE CENTER 125.2 372.0	KENAI RADIO 122.1	UNICOM 122.8 (CTAF)
---------------------------	--	-----------------------------	-------------------------------

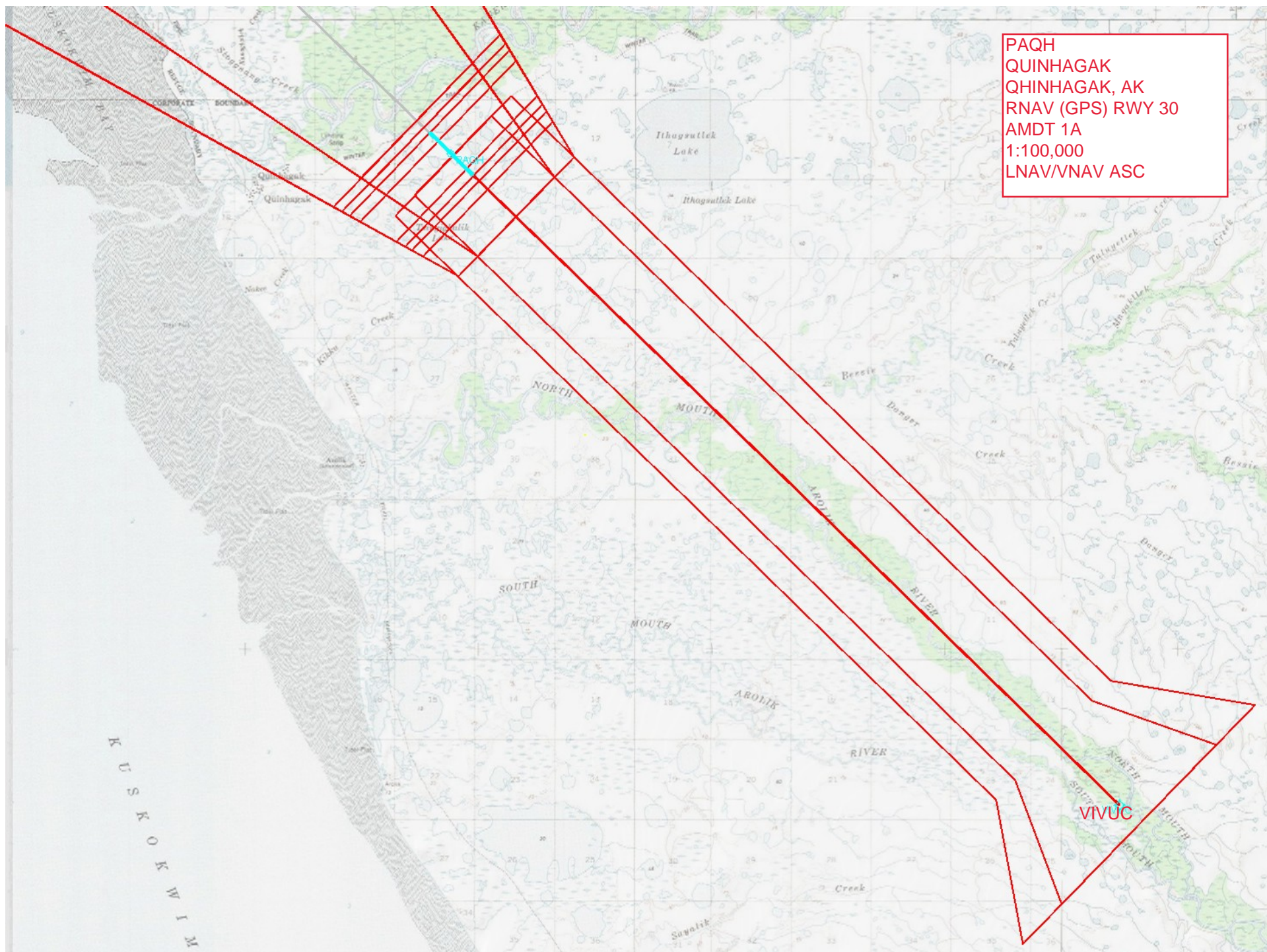


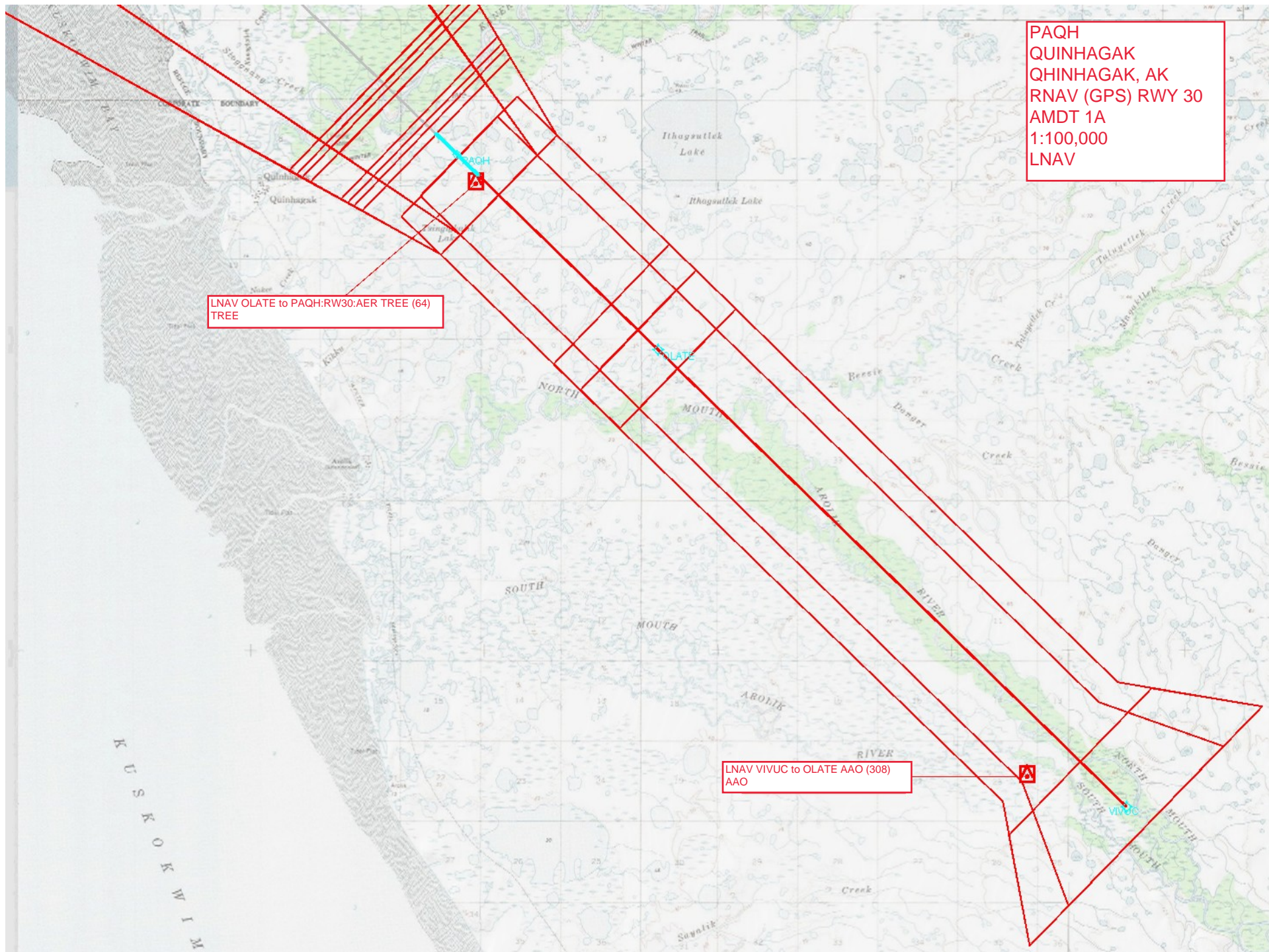
ELEV 43	TDZE 43
----------------	----------------



2500 HOTKU		OLATE 2.7 NM to RW30		VIVUC 3300		CUTEUB 3300		5 NM Holding Pattern	
0.7 NM to RW30		2 NM		7.1 NM		7.7 NM		GP 3.10° TCH 35	
CATEGORY		A		B		C		D	
LPV DA				293-1		250 (300-1)			
LNAV/VNAV DA				293-1		250 (300-1)			
LNAV MDA				320-1		277 (300-1)			
CIRCLING		400-1 357 (400-1)		500-1 457 (500-1)		580-1½ 537 (600-1½)		600-2 557 (600-2)	







PAQH
QUINHAGAK
QHINHAGAK, AK
RNAV (GPS) RWY 30
AMDT 1A
1:100,000
LNAV

LNAV Olate to PAQH:RW30:AER TREE (64)
TREE

LNAV VIVUC to Olate AAO (308)
AAO

PAQH
QUINHAGAK
QHINHAGAK, AK
RNAV (GPS) RWY 30
AMDT 1A
1:100,000
CIRCLING

Circling CAT C/D TOWER (260)
02-000667

Circling CAT A/B TREE (64)
TREE

