

Flight Procedures Cover Page	Task Action: P-NOTAM	Task Type: IAP	Estimated Chart Date: 05/20/2021	APWS Task ID: 8AB1539C7A3F4B7CA384D34281F481E0	APWS Project ID: B3B8BF2C7EC24F229143BA03E8D7BF21
Procedure: VOR/DME RWY 30 AMDT 11B		Enroute: NO	Specialist: Dougherty, Steven		Agreement Number:
Airport ID: KFOD			Airport City: FORT DODGE		State: IA
Facility ID: FOD	Facility Type: VORTAC	Flight Inspection Remark Type:			
<p>Procedure Comments: P-NOTAM.</p> <p>CIRCLING RADII INCREASE.</p> <p>ACTIVE DATA USED.</p> <p>CONTACT JASON KRETSCHMER, AJV-A421, 405-954-4019.</p> <div style="display: flex; justify-content: space-between; align-items: flex-end; margin-top: 20px;"> <div style="text-align: center;"> <p><i>Digitally signed by</i> JASON KRETSCHMER Mar 26, 2021</p> </div> <div style="text-align: center;"> <p><i>Digitally signed by</i> MARY MCDONALD 12 Mar 25, 2021</p> </div> </div>					



19115

FORT DODGE, IOWA

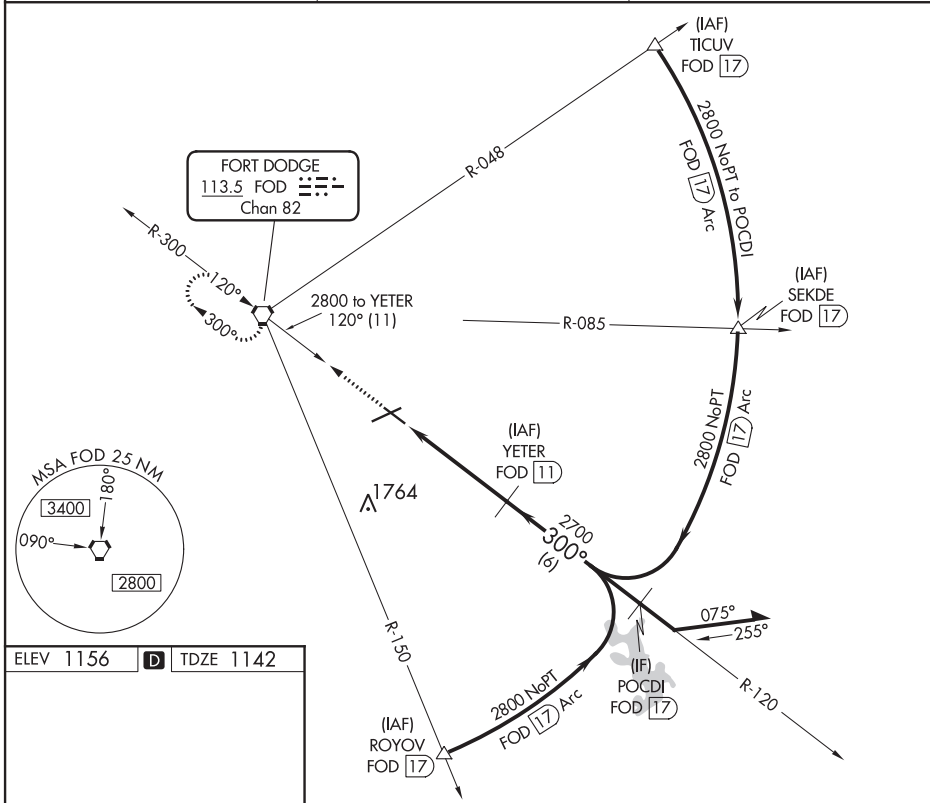
VORTAC FOD 113.5 Chan 82	APP CRS 300°	Rwy Idg 5301 TDZE 1142 Apt Elev 1156
--	------------------------	---

VOR/DME RWY 30
FORT DODGE RGNL (FOD)

T When local altimeter setting not received, use Webster City altimeter setting and increase all MDA 60 feet. Helicopter visibility reduction below $\frac{3}{4}$ SM NA.

MISSED APPROACH: Climb to 2800 direct FOD VORTAC and hold.

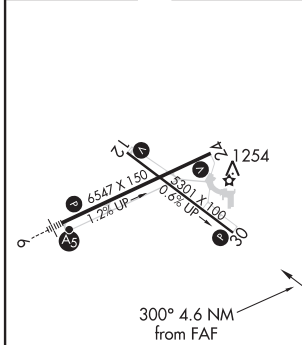
AWOS-3PT 118.775	MINNEAPOLIS CENTER 134.0 288.3	UNICOM 123.0 (CTAF) 1
----------------------------	--	---------------------------------



NC-3, 03 DEC 2020 to 31 DEC 2020

NC-3, 03 DEC 2020 to 31 DEC 2020

ELEV 1156	D	TDZE 1142
-----------	----------	-----------



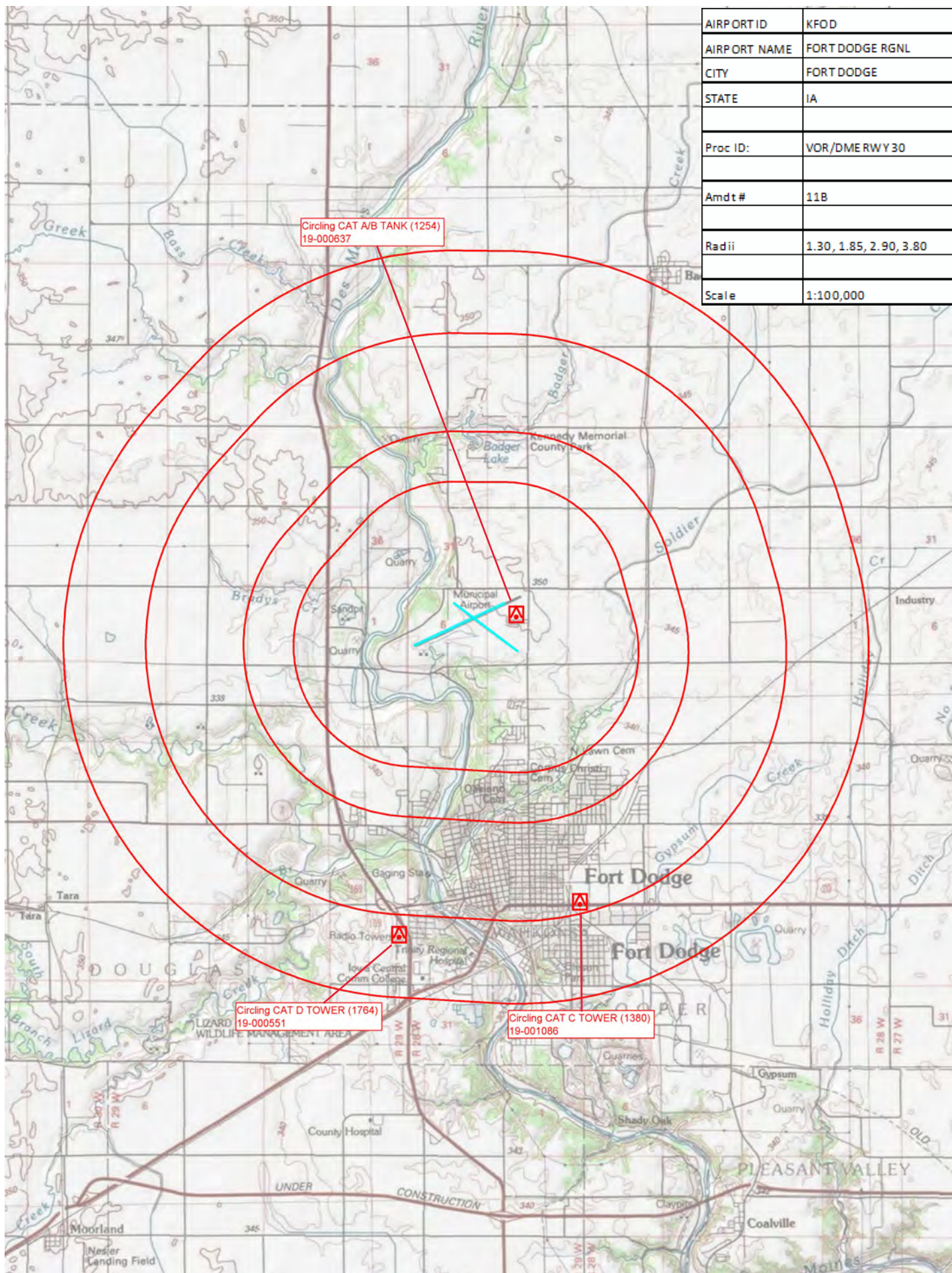
MIRL Rwy 12-30 **L**
REIL Rwy 12, 24 and 30 **L**
HIRL Rwy 6-24 **L**

CATEGORY	A	B	C	D
S-30	1600-1	458 (500-1)	1600-1 $\frac{3}{8}$	458 (500-1 $\frac{3}{8}$)
CIRCLING	1600-1 444 (500-1)	1620-1 464 (500-1)	1620-1 $\frac{1}{2}$ 464 (500-1 $\frac{1}{2}$)	1720-2 564 (600-2)

FORT DODGE, IOWA
Amdt 11A 21AUG14

42°33'N-94°12'W

FORT DODGE RGNL (FOD)
VOR/DME RWY 30



AIRPORT ID	KFOD
AIRPORT NAME	FORT DODGE RGNL
CITY	FORT DODGE
STATE	IA
Proc ID:	VOR/DME RWY 30
Amdt #	11B
Radii	1.30, 1.85, 2.90, 3.80
Scale	1:100,000