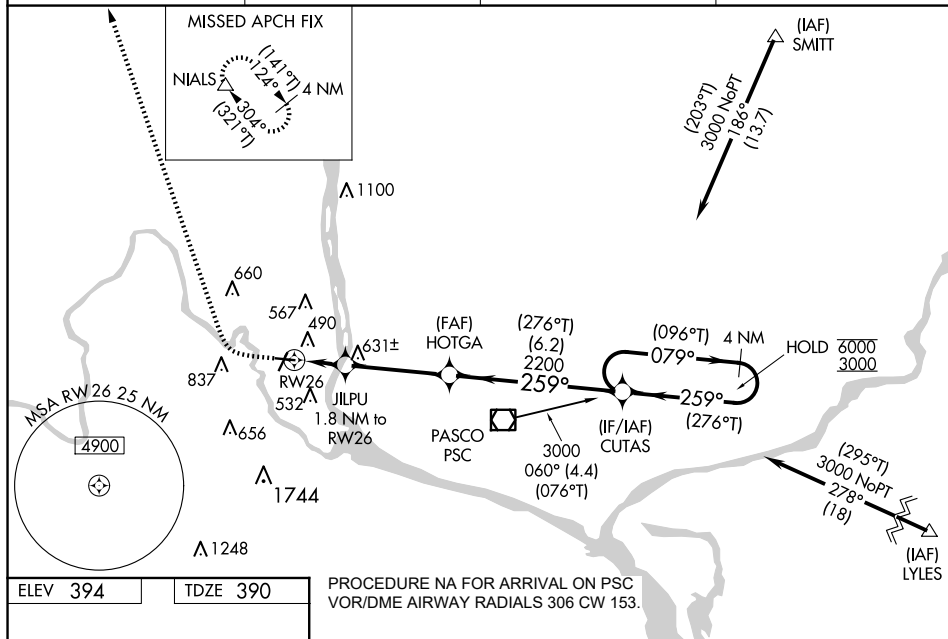


Flight Procedures Cover Page	Task Action: FLIGHT CHECK	Task Type: IAP	Estimated Chart Date: 08/07/2025	APWS Task ID: 8A85CEDCB69640119096F16C8003C5A6	APWS Project ID: EFA6AAB7B8CE41F3B4FDFB94BC9767C9
Procedure: RNAV (GPS) RWY 26 AMDT 3		Enroute: NO	Specialist: Neidigh, Jon		Agreement Number:
Airport ID: KRLD			Airport City: RICHLAND		State: WA
Facility ID:	Facility Type:	Flight Inspection Remark Type: New FC Slot			
<div>Procedure Comments: ACTIVE AIRPORT DATA USED CLEARs FDC NOTAM 3/7081 INCREASES MINIMUM VISIBILITY TO 7/8 SM TO MITIGATE PART 77 PRIMARY SURFACE PENETRATION CONTACT CASIMIR TABAKA 405-954-7931</div> <div>QUALITY 9 CHECKED BEGUE</div> <div>QUALITY 25 CHECKED</div>					



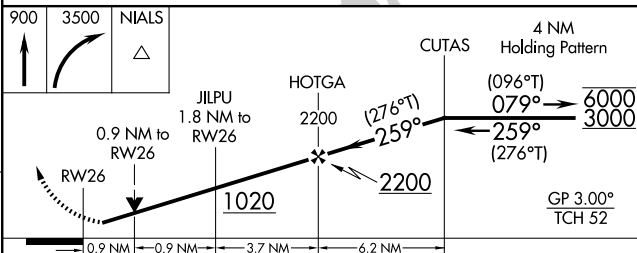
RNAV (GPS) RWY 26  
RICHLAND (RLD)

**MISSED APPROACH:**  
Climb to 900 then climbing  
right turn to 3500 direct  
NIALS and hold.

UNICOM  
122.7 (CTAF) **L**

TDZE 390

## PROCEDURE NA FOR ARRIVAL ON PSC VOR/DME AIRWAY RADIALS 306 CW 153



CATEGORY	A	B	C	D
LPV DA		646-7/8	256 (300-7/8)	
LPV/DA		651-7/8	261 (300-7/8)	
LPV MDA		740-1	350 (400-1)	
CIRCLING	820-1 426 (500-1)	1000-1 606 (700-1)	1200-2¼ 806 (900-2¼)	1960-3 1566 (1600-3)

REIL Rwy 1 and 19 **L**  
MIRL Rwy 1-19 and 8-26 **L**

RICHLAND, WASHINGTON  
Amdt 3 FIG

46°18'N-119°18'W

RICHLAND (RLD)

RNAV (GPS) RWY 26

OLD

RICHLAND, WASHINGTON

AL-5966 (FAA)

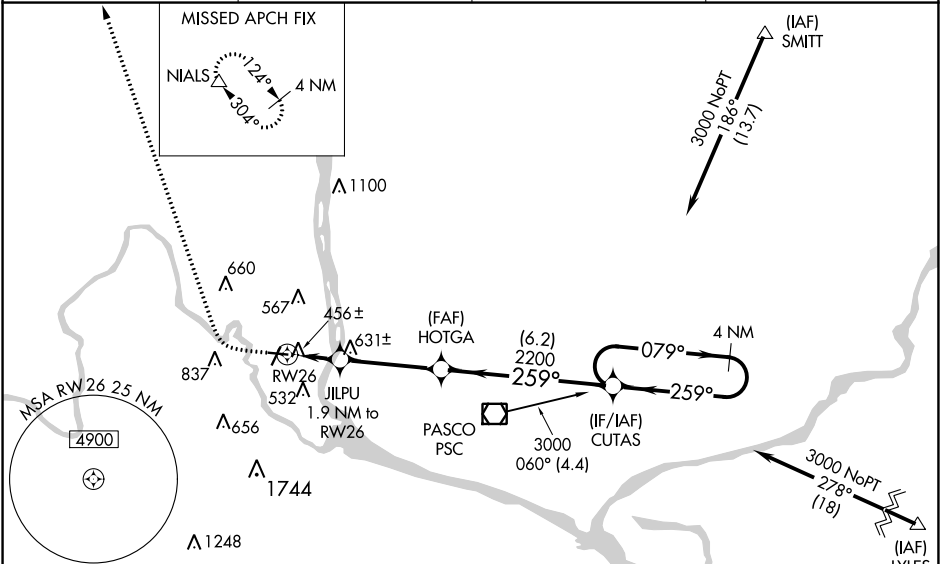
23334

WAAS CH <b>77903</b> <b>W26A</b>	APP CRS <b>259°</b>	Rwy Idg TDZE Apt Elev	<b>4001</b> <b>389</b> <b>394</b>
--	------------------------	-----------------------------	---

RNAV (GPS) RWY 26  
RICHLAND (RLD)

RNP APCH.	When local altimeter setting not received, use Pasco altimeter setting and increase all DA 21 feet and all MDA 40 feet and increase LNAV/VNAV Cats A and B visibility ½ mile, Circling Cat C visibility ¼ mile. Baro-VNAV NA when using Pasco altimeter setting. For uncompensated Baro-VNAV systems, LNAV/VNAV NA below -15°C (4°F) or above 41°C (107°F). Rwy 26 helicopter visibility reduction below ¾ SM NA.	MISSED APPROACH: Climb to 900 then climbing right turn to 3500 direct NIALS and hold.
-----------	---	---

AWOS-3PT <b>132.675</b>	SPOKANE APP CON ★ <b>128.75 377.2</b>	CLNC DEL <b>122.4</b>	UNICOM <b>122.7 (CTAF) 0</b>
----------------------------	--	--------------------------	---------------------------------



ELEV <b>394</b>	TDZE <b>389</b>
-----------------	-----------------

Procedure NA for arrivals at PSC VOR/DME on V187 southwest bound and on V281 southeast bound.

	900 3500 NIALS △	CUTAS 4 NM Holding Pattern			
	*LNAV only *0.9 NM to RW26	JILPU 1.9 NM to RW26	HOTGA 2200	259°	079° → 3000
	RW26	*1020	2200	259°	GP 3.00° TCH 53
	0.9 NM	1 NM	3.6 NM	6.2 NM	
	CATEGORY	A	B	C	D
LPV DA	657-7/8	268 (300-7/8)	657-1	268 (300-1)	
LNAV/VNAV DA	639-3/4	250 (300-3/4)	639-1	250 (300-1)	
LNAV MDA	720-1 331 (400-1)				
CIRCLING	920-1 526 (600-1)	1000-1 606 (700-1)	1200-2 1/4 806 (900-2 1/4)	1940-3 1546 (1600-3)	

REIL Rwy 1 and 19 0  
MIRL Rwy 1-19 and 8-26 0

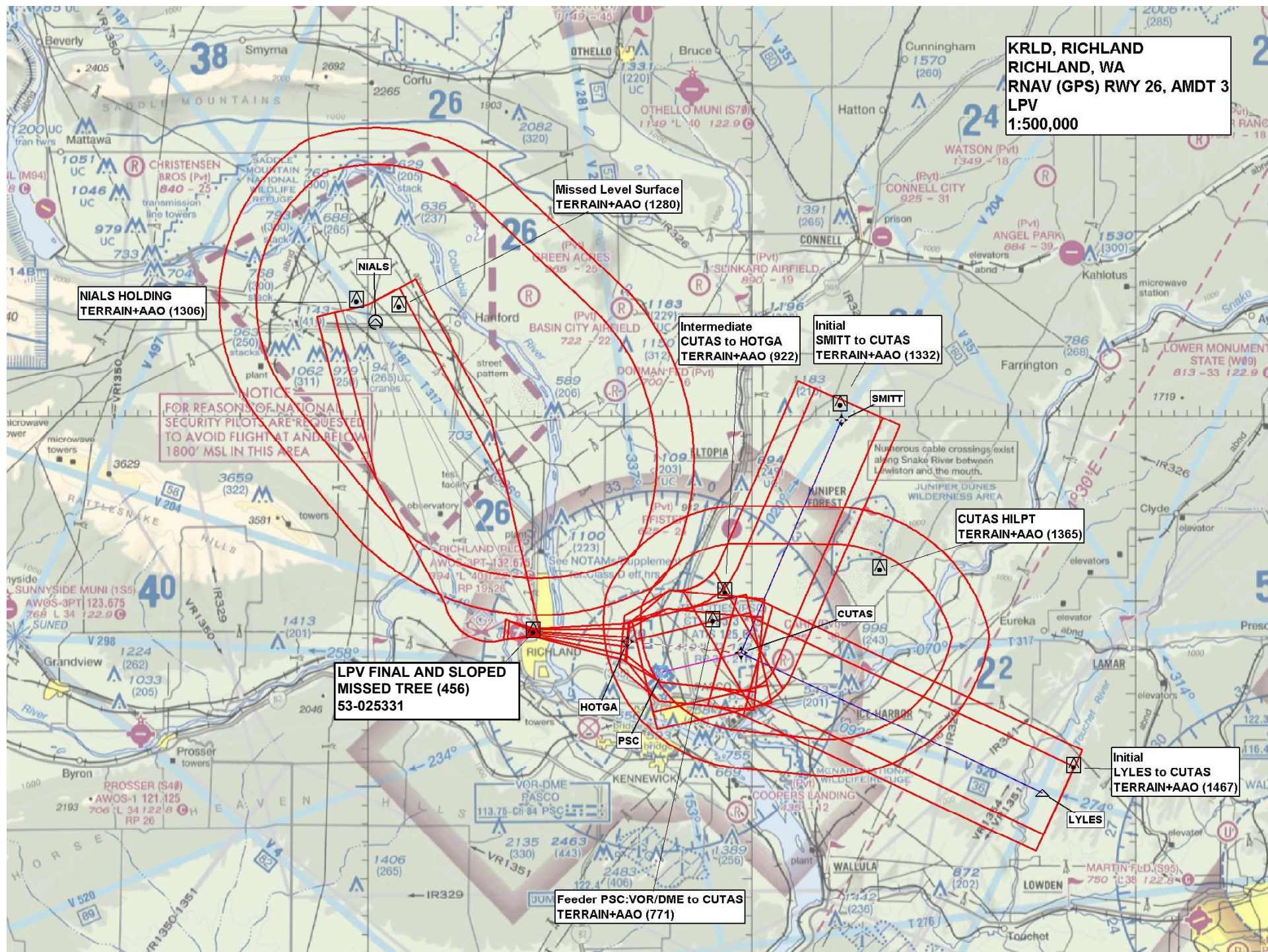
RICHLAND, WASHINGTON  
Amdt 2B 06DEC18

46°18'N-119°18'W

RNAV (GPS) RWY 26

NW-1, 26 DEC 2024 to 23 JAN 2025



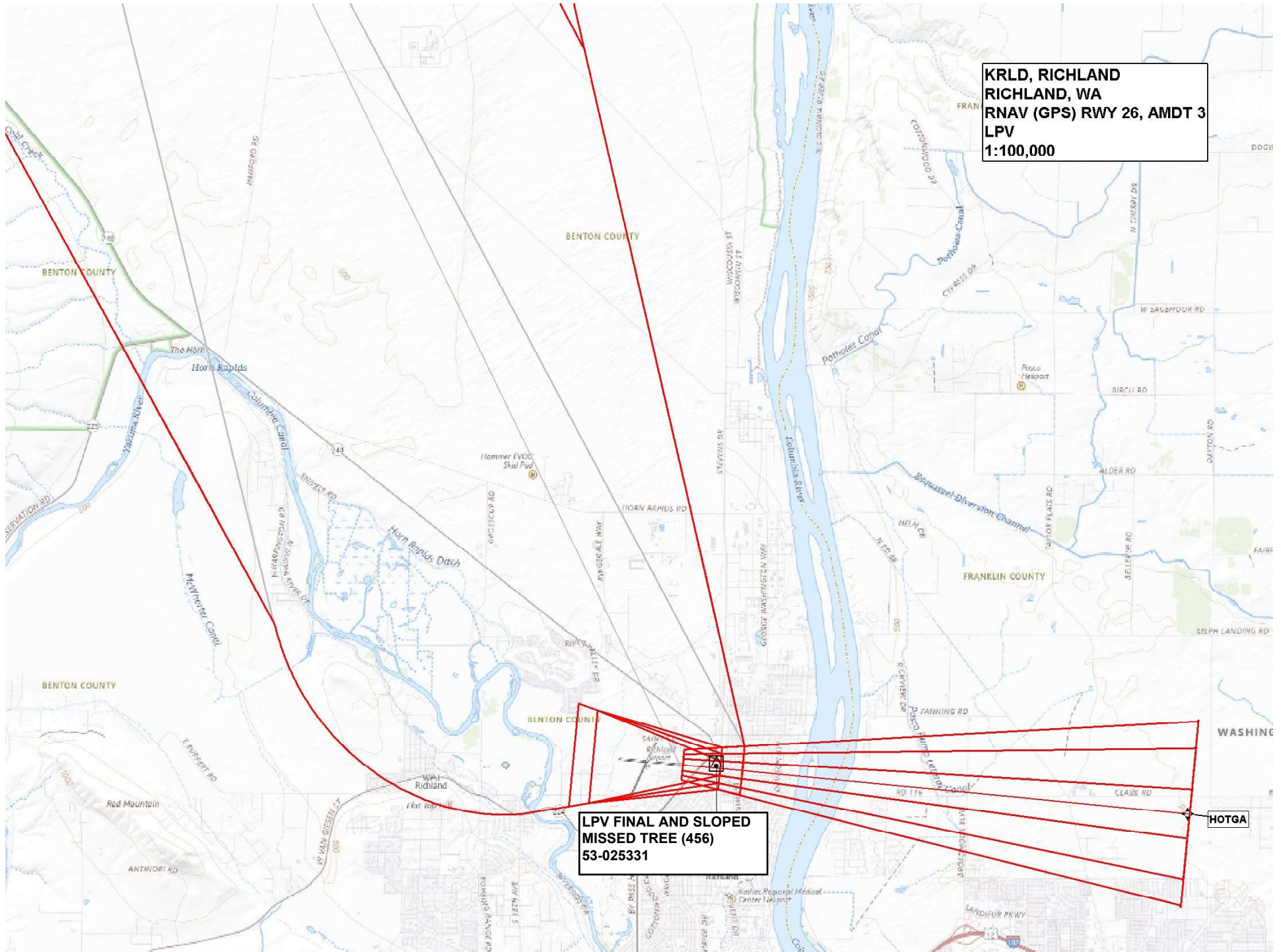




KRLD, RICHLAND  
RICHLAND, WA  
RNAV (GPS) RWY 26, AMDT 3  
LPV  
1:100,000

LPV FINAL AND SLOPED  
MISSED TREE (456)  
53-025331

HOTGA





**KRLD, RICHLAND  
RICHLAND, WA  
RNAV (GPS) RWY 26, AMDT 3  
LNAV/VNAV  
1:100,000**

**LNAV/VNAV  
ELECTRICAL\_SYSTEM (490)  
53-121808**

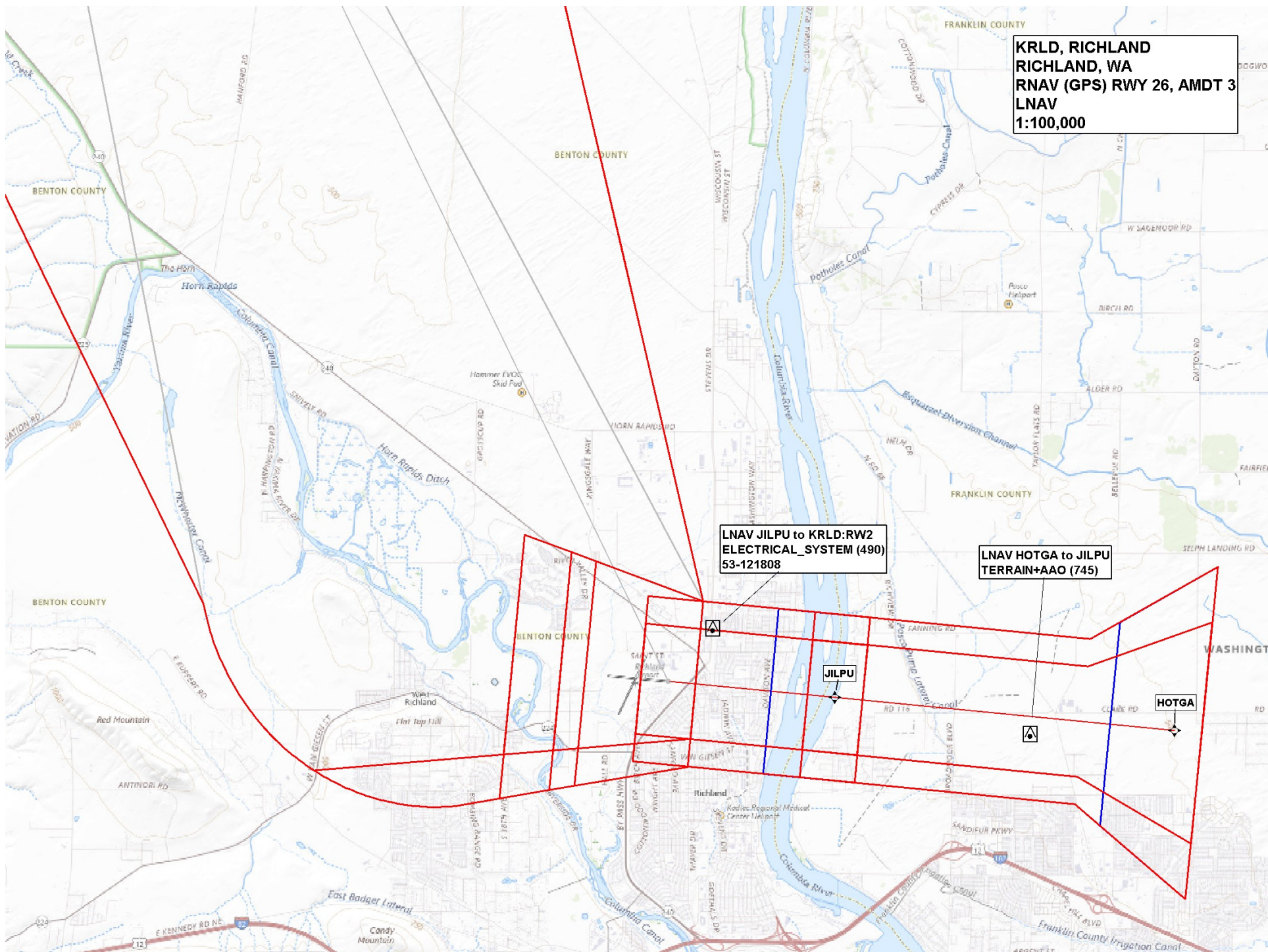
**HOTGA**



**KRLD, RICHLAND**  
**RICHLAND, WA**  
**RNAV (GPS) RWY 26, AMDT 3**  
**LNAV**  
**1:100,000**

**LNAV JILPU to KRLD:RW2**  
**ELECTRICAL\_SYSTEM (490)**  
**53-121808**

**LNAV HOTGA to JILPU**  
**TERRAIN+AAO (745)**





**RRLD, RICHLAND**  
**RICHLAND, WA**  
**RNAV (GPS) RWY 26, AMDT 3**  
**CIRCLING**  
**1:100,000**

**Circling CAT C  
TOWER (837)  
53-001325**

**Circling CAT B  
SPIRE (689)  
53-121740**

**Circling CAT A  
TERRAIN+VEG (514)**

**Circling CAT D  
TERRAIN+AAO (1654)**

