



|   |                          |                                |                                     |   |  |
|---|--------------------------|--------------------------------|-------------------------------------|---|--|
| Flight Procedures Cover Page  | Task Action:<br>P-NOTAM  | Task Type:<br>IAP              | Estimated Chart Date:<br>08/12/2021 | APWS Task ID:<br>8A53970EA10E4FC3B5D3E3318FDA5A6D | APWS Project ID:<br>F343C17A6BD4406F9602F93FD7354761 |
| Procedure:<br>VOR RWY 17 AMDT 7A  |                          | Enroute:<br>NO                 | Specialist:<br>Boone-walt, Rose     |   | Agreement Number:                                    |
| Airport ID:<br>KLNK   |                          |                                | Airport City:<br>LINCOLN            |   | State:<br>NE   |
| Facility ID:<br>LNK   | Facility Type:<br>VORTAC | Flight Inspection Remark Type: |                                     |   |  |
| <p>Procedure Comments:<br/>PNOTAM<br/>Circling radii increase based on existing procedure at airport - RNAV (GPS) RWY 35, Orig, Chart date 12/10/2015.<br/>Processed IAW Aircraft Operations Group (AJF-10) Memo, April 29, 2020 Subject: Flight Inspection Not Required.</p> <p>CONTACT: JASON KRETSCHMER AJV-A421 LEAD: 405.954.4019</p> <p style="text-align: center;"><i>Digitally signed by</i><br/><b>JASON KRETSCHMER</b><br/>Jun 15, 2021</p> <div style="text-align: right;">  5/13/21 J. DuBois </div> <div style="text-align: right;">  </div> |                          |                                |                                     |   |  |

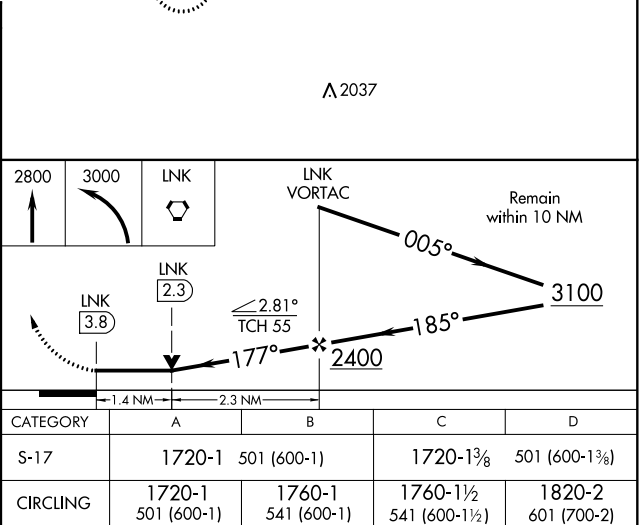
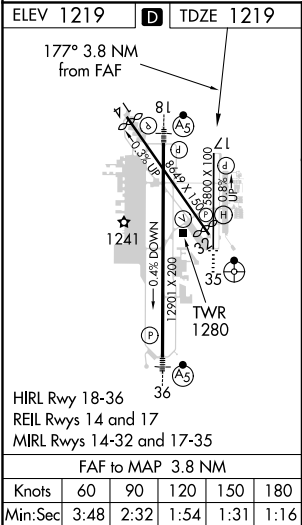
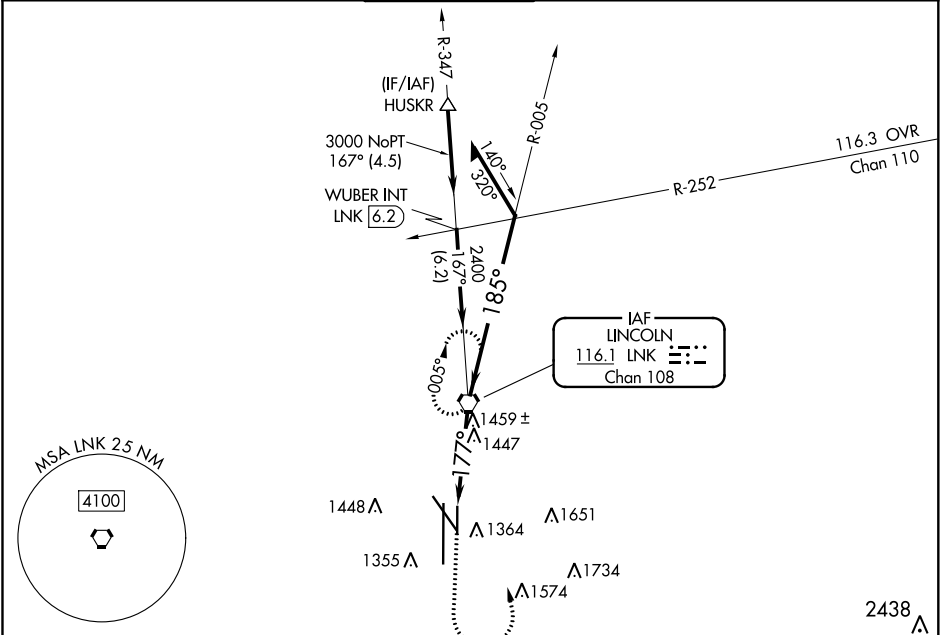
|            |         |          |      |
|------------|---------|----------|------|
| VORTAC LNK | APP CRS | Rwy Idg  | 5400 |
| 116.1      | 177°    | TDZE     | 1219 |
| Chan 108   |         | Apt Elev | 1219 |



VOR RWY 17  
LINCOLN (LNK)

|  |   |
|--|---|
| <p><b>⚠</b> Visibility reduction by helicopters NA. When local altimeter setting not received, use Beatrice altimeter setting and increase all MDA 100 feet; increase S-17 Cat C/D visibility 3/8 mile and Circling Cat C/D visibility 1/4 mile. VDP NA when using Beatrice altimeter setting.</p> | <p><b>MISSED APPROACH:</b> Climb to 2800 then climbing left turn to 3000 direct LNK VORTAC and hold</p> |
|--|---|

|                      |                              |                                      |                        |                         |                  |
|----------------------|------------------------------|--------------------------------------|------------------------|-------------------------|------------------|
| ATIS<br>118.05 290.9 | OMAHA APP CON<br>124.0 270.3 | LINCOLN TOWER *<br>118.5(CTAF) 253.5 | GND CON<br>121.9 275.8 | CLNC DEL<br>120.7 225.4 | UNICOM<br>122.95 |
|----------------------|------------------------------|--------------------------------------|------------------------|-------------------------|------------------|



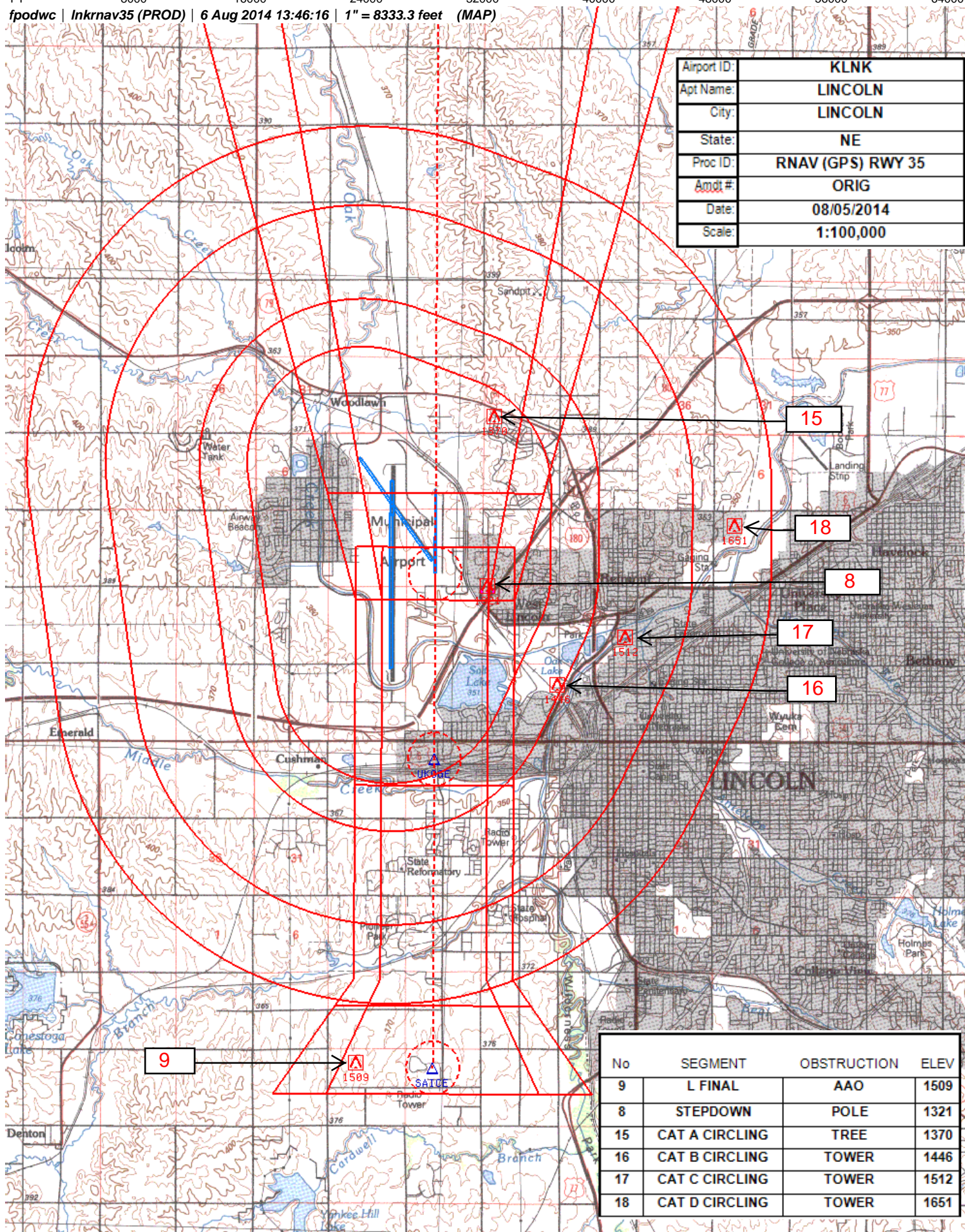
NC-2, 20 MAY 2021 to 17 JUN 2021

NC-2, 20 MAY 2021 to 17 JUN 2021

NM 1 2 3 4 5 6 7 8 9 10  
FT 8000 16000 24000 32000 40000 48000 56000 64000

fpodwc | Inkrnav35 (PROD) | 6 Aug 2014 13:46:16 | 1" = 8333.3 feet (MAP)

|             |                   |
|-------------|-------------------|
| Airport ID: | KLNK              |
| Apt Name:   | LINCOLN           |
| City:       | LINCOLN           |
| State:      | NE                |
| Proc ID:    | RNAV (GPS) RWY 35 |
| Amdt #:     | ORIG              |
| Date:       | 08/05/2014        |
| Scale:      | 1:100,000         |



| No | SEGMENT        | OBSTRUCTION | ELEV |
|----|----------------|-------------|------|
| 9  | L FINAL        | AAO         | 1509 |
| 8  | STEPDOWN       | POLE        | 1321 |
| 15 | CAT A CIRCLING | TREE        | 1370 |
| 16 | CAT B CIRCLING | TOWER       | 1446 |
| 17 | CAT C CIRCLING | TOWER       | 1512 |
| 18 | CAT D CIRCLING | TOWER       | 1651 |