

GREEN BAY, WISCONSIN

3 (FAA)

20142

WAAS CH 63015 W06A	APP CRS 062°	Rwy Idg 7699 TDZE 692 Apt Elev 695
--	------------------------	---

RNAV (GPS) RWY 6

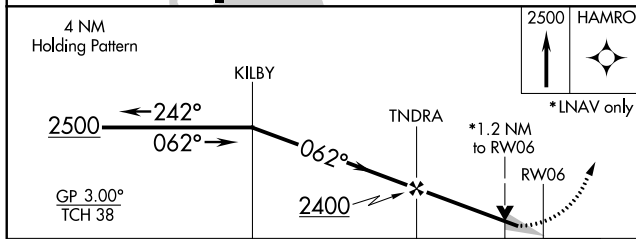
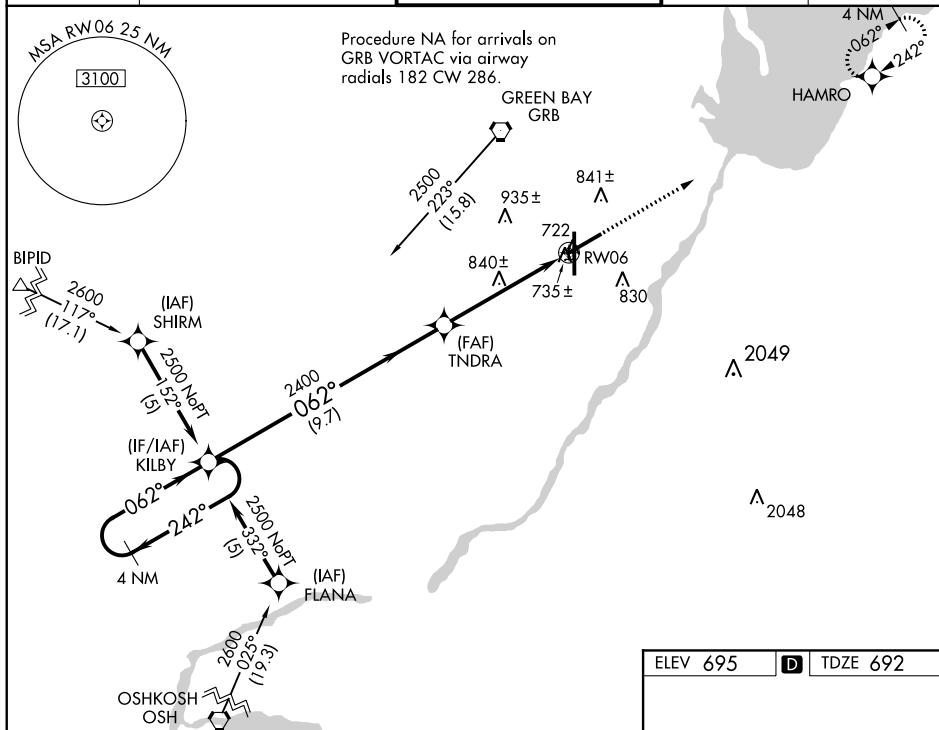
GREEN BAY-AUSTIN STRAUBEL INTL (GRB)

For uncompensated Baro-VNAV systems, LNAV/VNAV NA below -16°C (4°F) or above 47°C (116°F). DME/DME RNP-0.3 NA. For inoperative MALSR, increase ASR LNAV/VNAV Cat D visibility to RVR 5000 and LNAV Cat D visibility to RVR 6000.

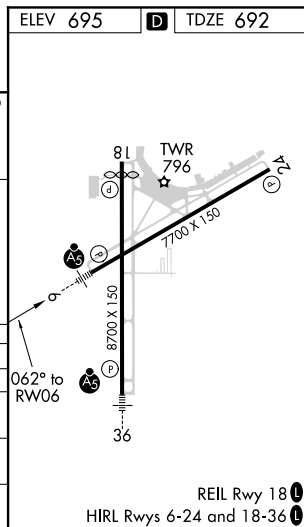


MISSED APPROACH: Climb to 2500 direct HAMRO and hold.

ATIS 124.1	GREEN BAY APP CON* 119.4 338.2	GREEN BAY TOWER* 118.7 (CTAF) 0 257.8	GND CON 121.9	CLNC DEL 121.75
----------------------	--	---	-------------------------	---------------------------



CATEGORY	A	B	C	D
LPV DA	892/24	200 (200-1/2)		
LNAV/VNAV DA	1000/24	308 (400-1/2)		1000/40 308 (400-3/4)
LNAV MDA	1100/24	408 (500-1/2)		1100/50 408 (500-1)
CIRCLING	1200-1	505 (600-1)	1200-1 1/2 505 (600-1 1/2)	1260-2 565 (600-2)



GREEN BAY, WISCONSIN

Amdt 2A 17AUG17

44°29'N-88°08'W

GREEN BAY-AUSTIN STRAUBEL INTL (GRB)

RNAV (GPS) RWY 6

EC-3, 18 JUN 2020 to 16 JUL 2020

EC-3, 18 JUN 2020 to 16 JUL 2020

Circling - all procedures

