


Flight Procedure Tracking Form		Action: AMENDMENT	Task Type: IAP	Date Open: 09/26/2019	Task #: 2019092631314801005	Request #: 20190926313148
Procedure: RNAV (GPS) RWY 5R AMDT 2E			Airport ID: KGSO	Airport: PIEDMONT TRIAD INTL		Reimbursable #: NO
City: GREENSBORO	ST: NC	GPS #:	Estimated Chart Date: 03/26/2020		FICO #:	
Fac ID: N/A		Fac. Type:		Specialist: RUSSELL ROSLEWSKI		
Procedure Review						
	Rec'd	Rel'd	Full Name	Comments		
Lead:	09/26/2019					
QA:						
Liaison:						
Procedure Comments: ENROUTE-NON Remark Type: INFORMATION P-NOTAM NEW CIRCLING AREAS BASED ON EXISTING PROCEDURES. PROCESSED IAW AIRCRAFT OPERATIONS GROUP (AJW-33) MEMO, OCTOBER 3, 2018, SUBJECT: FLIGHT INSPECTION REVIEW NOT REQUIRED. DAVE DANNER, 405-954-5077						

WAAS CH 53610 W05A	APP CRS 052°	Rwy Idg 10001 TDZE 900 Apt Elev 926
--	------------------------	--

RNAV (GPS) RWY 5R

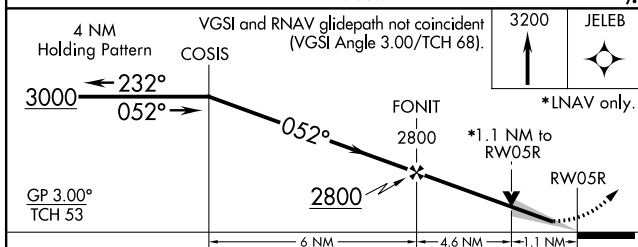
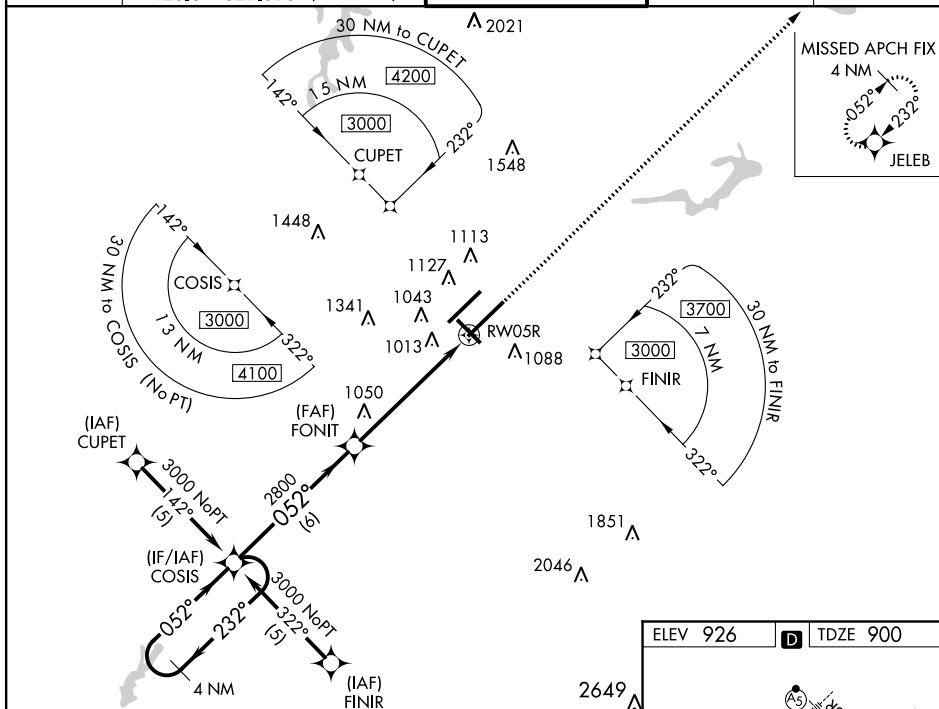
PIEDMONT TRIAD INTL (GSO)

▼ For inop MALSR, increase LNAV Cat D visibility to RVR 6000. For uncompensated Baro-VNAV systems, LNAV/VNAV NA below -16°C (4°F) or above 47°C (116°F). DME/DME RNP-0.3 NA. Simultaneous approach authorized with ILS or LOC Rwy 5L, ILS Rwy 5L (CAT II), ILS Rwy 5L (CAT III). Use of FD or AP providing RNAV track guidance required during simultaneous operations. LNAV Procedure NA during simultaneous operations.
**RVR 1800 authorized with use of FD or AP or HUD to DA.

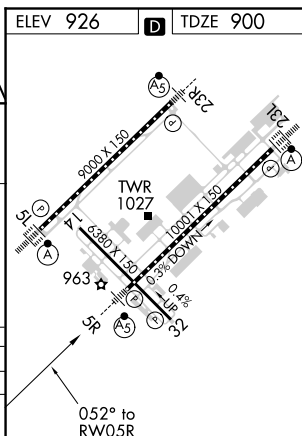


MISSED APPROACH:
Climb to 3200 direct
JELEB and hold.

D-ATIS 128.55	GREENSBORO APP CON 124.35 269.225 (250°-049°) 126.6 327.075 (050°-249°)	GREENSBORO TOWER 119.1 290.325	GND CON 121.9 348.6	CLNC DEL 121.75
-------------------------	---	--	-------------------------------	---------------------------



CATEGORY	A	B	C	D
LPV DA**	1100/24		200 (200-½)	
LNAV/VNAV DA	1321/50		421 (400-1)	
LNAV MDA	1320/24	420 (400-½)	1320/40 420 (400-¾)	1320/50 420 (400-1)
CIRCLING	1440-1	514 (600-1)	1440-1½ 514 (600-1½)	1480-2 554 (600-2)



TDZ/CL Rwy 5L, 23R and 23L
REIL Rwy 32
HIRL Rwy 14-32, 5R-23L and 5L-23R

