

Flight Procedures Cover Page	Task Action: Abbreviated Amendment	Task Type: IAP	Estimated Chart Date: 05/16/2024	APWS Task ID: 8A11B4AC1E474BE79D1AC09206B44900	APWS Project ID: 9CEAB3279473402BA7F15E45DBDF16CC
Procedure: ILS OR LOC RWY 15R AMDT 2B		Enroute: NO	Specialist: Johnson, Timothy		Agreement Number:
Airport ID: KBOS			Airport City: BOSTON		State: MA
Facility ID: MDC	Facility Type: ILS	Flight Inspection Remark Type:			
<div>Procedure Comments: CONTACT: DAVID DANNER (405)-954-5077.</div> <div>PROCESSED IAW TECHNICAL SUPPORT GROUP (AJF-17) MEMO DATED 07/07/2021, SUBJECT: GUIDANCE FOR PROCEDURAL CHANGES REQUIRING FLIGHT INSPECTION/VALIDATION.</div> <div><div>QUALITY 9 CHECKED BEGUE</div><div>QUALITY 8 CHECKED</div></div>					

LOC/DME I-MDC	APP CRS	Rwy Idg	9201
110.7	149°	TDZE	17
Chan 44		Apt Elev	19

ILS or LOC RWY 15R

GENERAL EDWARD LAWRENCE LOGAN INTL (BOS)

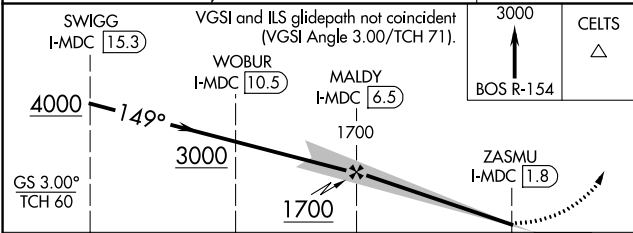
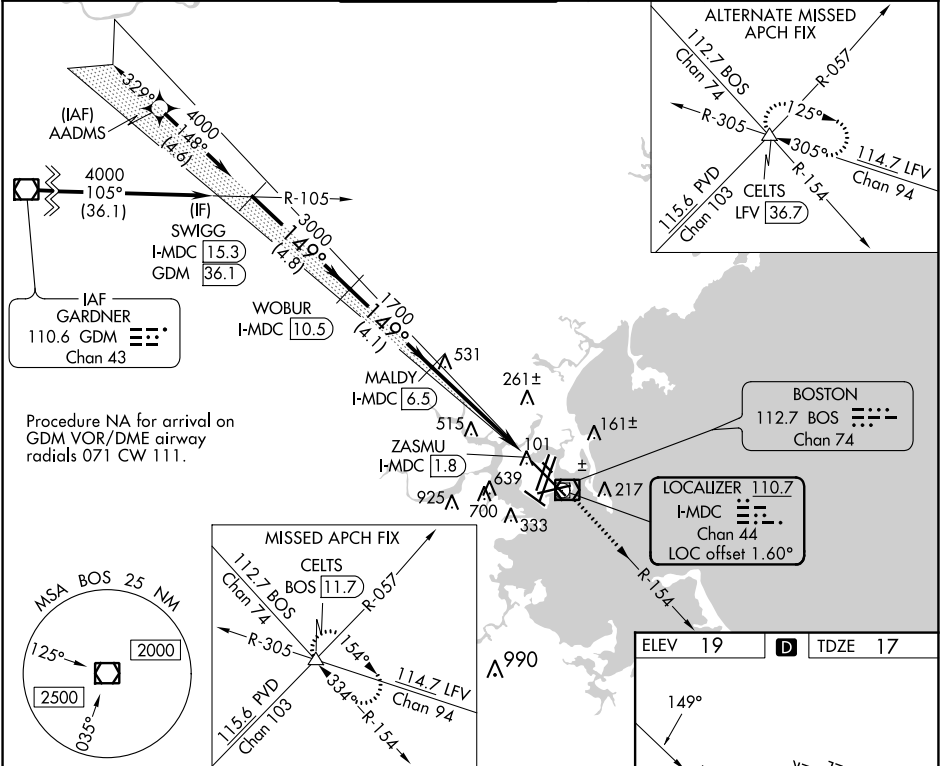
DME required. From AADMS: RNAV 1-GPS required.

- ⚠ Circling NA for Cats C and D west of Rwy 4L and 15R. Circling NA to Rwy 14. For inop ALS, increase S-LOC 15R Cat C/D visibility to 1½ SM.



MISSED APPROACH: Climb to 3000 on BOS VOR/DME R-154 to CELTS INT/BOS 11.7 DME and hold.

D-ATIS	BOSTON APP CON	BOSTON TOWER	GND CON	CLNC DEL	CPDLC
135.0	120.6 263.1	128.8 257.8 (WEST) 132.225 257.8 (EAST)	121.9 121.75	121.65 257.8	



CATEGORY	A	B	C	D
S-ILS 15R		267/24	250 (300-½)	
S-LOC 15R		580/24	563 (600-½)	580-1¼ 563 (600-1¼)
Ⓢ CIRCLING	940-1¼ 921 (1000-1¼)	1040-1½ 1021 (1100-1½)	620-1¾ 601 (700-1¾)	620-2 601 (700-2)

