

Flight Procedures Cover Page	Task Action: Amendment	Task Type: IAP	Estimated Chart Date: 04/23/2020	APWS Task ID: 89C0FD5346B1477894C1DBB64CDE9460	APWS Request ID: C8518230C6E14F69AD41A7AECB8A9F92
Procedure: RNAV (GPS) RWY 32 AMDT 2B		Enroute: NO	Specialist: Sickels, Dale		Agreement Number:
Airport ID: KDIK	Airport Name: DICKINSON - THEODORE ROOSEVELT RGNL		Airport City: DICKINSON		State: ND
Facility ID:	Facility Type:	Flight Inspection Remark Type: New FC Slot			
<div>Procedure Comments: PROCESSED IAW AIRCRAFT OPERATIONS GROUP (AJW-33) MEMO, OCTOBER 3, 2018, SUBJECT: FLIGHT INSPECTION REVIEW NOT REQUIRED.</div> <div>P-NOTAM.</div> <div>CIRCLING ICON.</div> <div>ACTIVE DATA USED.</div> <div>CONTACT DAVID DANNER, AJV-A421, 405-954-5077.</div> <div>QUALITY 15 CHECKED</div> <div>QUALITY 10 CHECKED</div>					

WAAS CH 45512 W32A	APP CRS 320°	Rwy ldg 6399 TDZE 2591 Apt Elev 2592
--	------------------------	---

OLD

RNAV (GPS) RWY 32

DICKINSON-THEODORE ROOSEVELT RGNL (DIK)

RNP APCH

T

A

❄-30°C

For uncompensated Baro-VNAV systems, LNAV/VNAV NA below -20°C (-4°F) or above 44°C (111°F). When local altimeter setting not received, use Bowman altimeter setting and increase all DA 266 feet, all MDA 280 feet, increase LPV all Cats visibility ½ SM, LNAV/VNAV Cats A/B/C visibility 1 SM, Cat D visibility ¾ SM, LNAV Cats C/D visibility ¾ SM, Circling Cat B visibility ¼ SM, Cats C/D visibility ¾ SM. For inop ALS when using Bowman altimeter setting, increase LPV all Cats visibility to 1½ SM, LNAV/VNAV all Cats visibility to 2 SM, LNAV Cat C visibility to 2 SM and Cat D visibility to 2 ¼ SM. For inop ALS, increase LNAV/VNAV Cat D visibility to 1 SM and LNAV Cat D visibility to 1 ½ SM. VDP and Baro-VNAV NA when using Bowman altimeter setting.

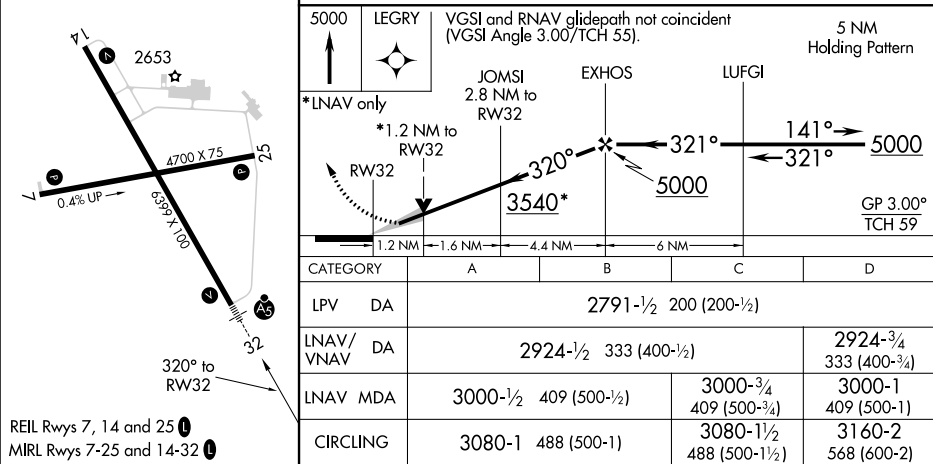
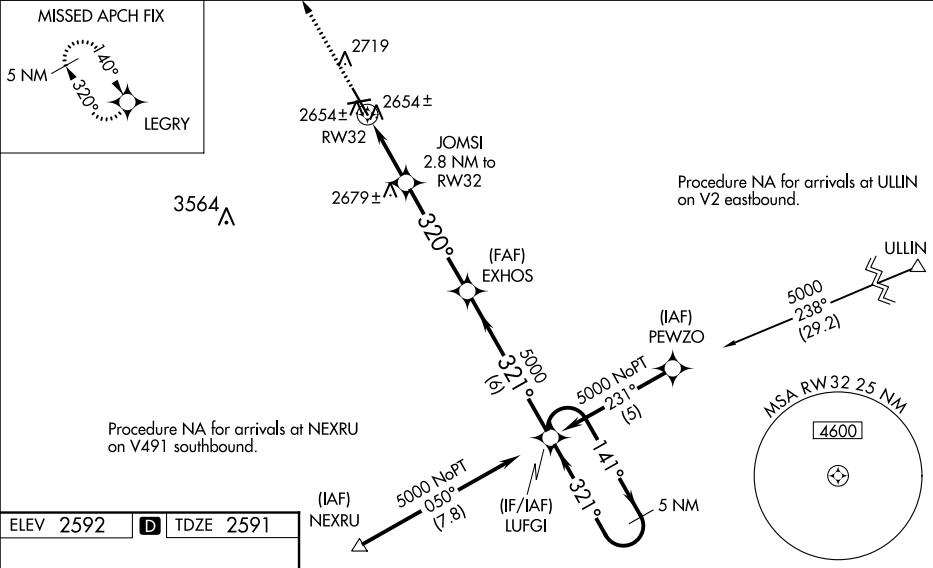
MALSRL

AS

5

MISSED APPROACH:
Climb to 5000 direct
LEGY and hold.

ASOS 118.375	MINNEAPOLIS CENTER 124.25 236.825	UNICOM 123.0 (CTAF) 0
------------------------	---	---------------------------------



NM
FT
fpocj

Map from KDIK ILS OR LOC RWY 32 showing new circling areas and controlling obstacles.

64000

