

Flight Procedures Cover Page	Task Action: Amendment	Task Type: IAP	Estimated Chart Date: 03/23/2023	APWS Task ID: 88DA32E81B1C4E7ABE9CCBFE72F1206C	APWS Request ID: B2FE2F38D46E4BBB82EFB7A177BF1AA0
Procedure: VOR/DME RWY 21 AMDT 9C		Enroute: NO	Specialist: Roslewski, Russell		Agreement Number:
Airport ID: KCWI	Airport Name: CLINTON MUNI		Airport City: CLINTON		State: IA
Facility ID:	Facility Type:	Flight Inspection Remark Type:			
<div>Procedure Comments: P-NOTAM</div> <div>New circling areas - MDAs did not change with increased radii.</div> <div>Processed IAW Aircraft Operations Group (AJW-33) Memo, October 3, 2018, Subject: Flight Inspection Review Not Required.</div> <div>Dave Danner, 405-954-5077</div> <div><div>J ZEDER 06/25/2020</div><div>QUALITY 16 CHECKED</div><div>QUALITY 26 CHECKED</div></div>					

CLINTON, IOWA

OLD

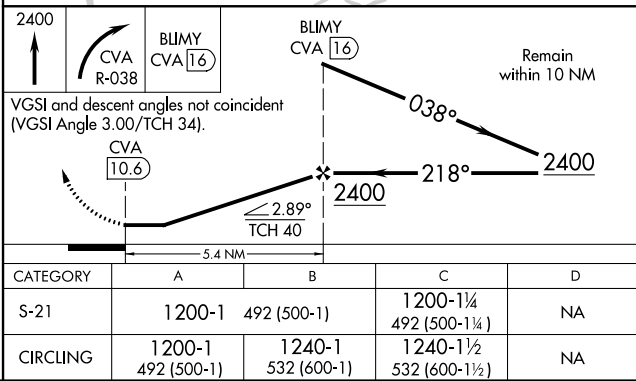
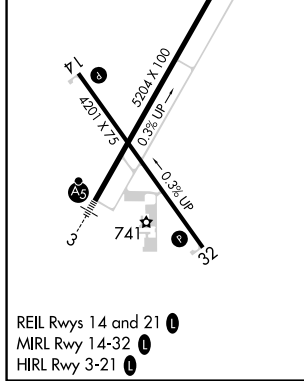
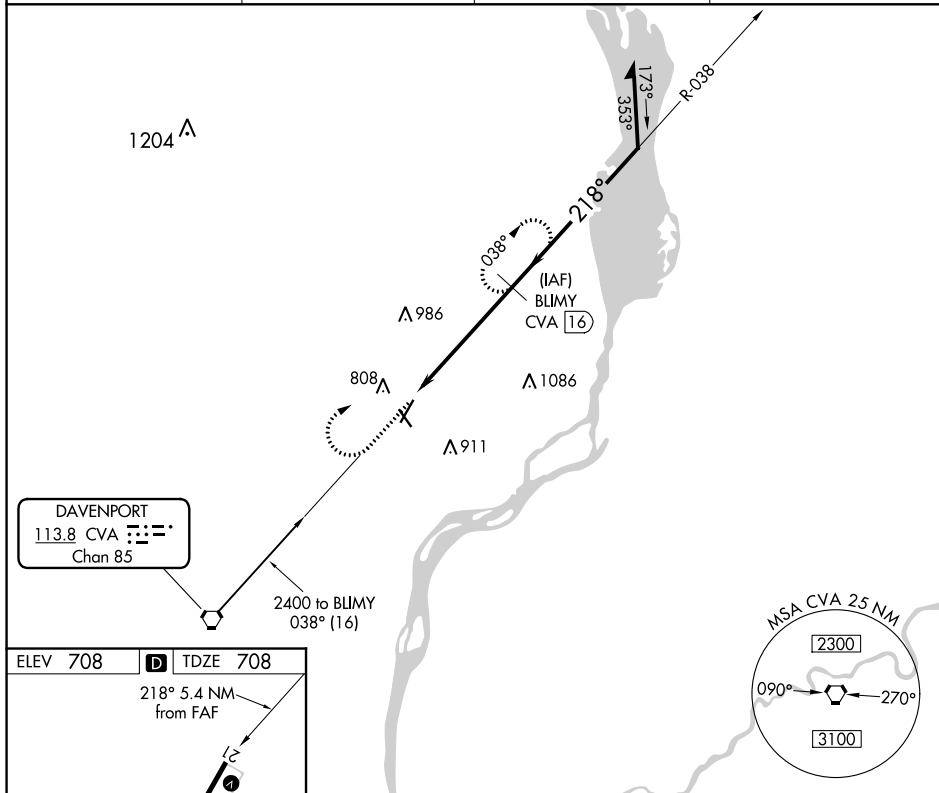
19171

VORTAC CVA <b>113.8</b> Chan <b>85</b>	APP CRS <b>218°</b>	Rwy Idg TDZE Apt Elev	<b>5204</b> <b>708</b> <b>708</b>
--	------------------------	-----------------------------	---

## VOR/DME RWY 21

CLINTON MUNI (CWI)

<div><div><div></div><div></div></div><div><div></div><div></div></div></div> <div><div></div><div></div></div> <div>-35°C/-31°F</div>		MISSED APPROACH: Climb to 2400 then right turn via CVA R-038 to BLIMY 16 DME and hold.	
AWOS-3PT 125.525	QUAD CITY APP CON ★ 125.95 257.8	CLNC DEL 118.5 0	UNICOM 122.8 (CTAF)



CLINTON, IOWA  
Amdt 9B 08APR10

41°50'N-90°20'W

## VOR/DME RWY 21

NC-3, 30 JAN 2020 to 27 FEB 2020

NC-3, 30 JAN 2020 to 27 FEB 2020



KCWI  
Clinton Muni  
Clinton, IA  
1:100k  
Circling - all procedures

