

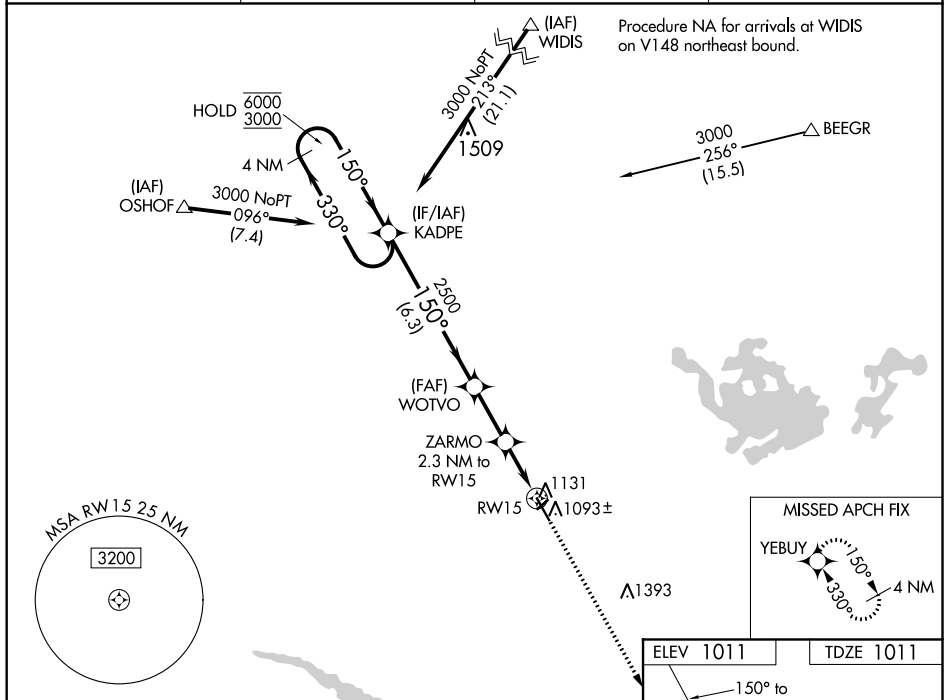
Flight Procedures Cover Page	Task Action: P-NOTAM	Task Type: IAP	Estimated Chart Date: 02/23/2023	APWS Task ID: 88B54FDF6BD047C998755C8307766C91	APWS Project ID: B3F596EA29CD479F934AA1AABF39F4EE
Procedure: RNAV (GPS) RWY 15 AMDT 0D		Enroute: NO	Specialist: Armentrout, Britney		Agreement Number:
Airport ID: KULM			Airport City: NEW ULM		State: MN
Facility ID:	Facility Type:	Flight Inspection Remark Type:			
<div>Procedure Comments:</div> <div>Processed IAW Technical Support Group (AJF-17) Memo dated 07/07/2021 Guidance for Procedural Changes Requiring Flight Inspection/Validation</div> <div>Active airport and runway data used</div> <div>Contact Rake McGraw 405-594-8711</div> <div>This cancels FDC 2/5504</div> <div><div>QUALITY 38 CHECKED</div><div>QUALITY 13 CHECKED</div></div>					

WAAS CH 87131 W15A	APP CRS 150°	Rwy Idg TDZE Apt Elev 5401 1011 1011
--	------------------------	--

RNAV (GPS) RWY 15
NEW ULM MUNI (ULM)

RNP APCH. ▼ Circling NA to Rwys 4 and 22. For uncompensated Baro-VNAV systems, LNAV/VNAV NA below -17°C or above 54°C.	MISSED APPROACH: Climb to 3000 direct YEBUY and hold.
---	---

AWOS-3 118.325	MINNEAPOLIS CENTER 127.1 290.2	GCO 121.725	UNICOM 123.0 (CTAF) 0
--------------------------	--	-----------------------	---------------------------------



4 NM Holding Pattern		VGSI and RNAV glidepath not coincident (VGSI Angle 3.00/TCH 25).		3000	YEBUY
6000 ← 330° 3000 → 150°		KADPE		WOTVO	ZARMO 2.3 NM to RW15
GP 3.00° TCH 40		2500		*1760	
6.3 NM		2.3 NM		1.1 NM	1.2 NM
CATEGORY	A	B	C	D	
LPV DA	1261-7/8		250 (300-7/8)		
LNAV/VNAV DA	1298-1		287 (300-1)		
LNAV MDA	1400-1 389 (400-1)		1400-1 1/8 389 (400-1 1/8)		
CIRCLING	1440-1 429 (500-1)	1500-1 489 (500-1)	1620-1 3/4 609 (700-1 3/4)	1620-2 609 (700-2)	

