

Flight Procedures Cover Page	Task Action: P-NOTAM	Task Type: IAP	Estimated Chart Date: 06/12/2025	APWS Task ID: 88A9F97A769547FCB07B6254D5FD5F3F	APWS Project ID: 60EA275908204CAC9CADD49996BD4AE3
Procedure: RNAV (GPS) RWY 25 AMDT 0B		Enroute: NO	Specialist: Slane, Cory		Agreement Number:
Airport ID: 3I2			Airport City: POINT PLEASANT		State: WV
Facility ID:	Facility Type:	Flight Inspection Remark Type:			
<div>Procedure Comments: P-NOTAM 5/2302</div> <div>AMENDED BACKUP ALTIMETER (ATHENS/ALBANY) NOTES TO REFLECT 3 LETTER IDENTIFIER (UNI) FOR ALL REQUIRED NOTES.</div> <div>PROCESSED IAW TECHNICAL SUPPORT GROUP (AJF-17) MEMO DATED 07/07/2021, SUBJECT: GUIDANCE FOR PROCEDURAL CHANGES REQUIRING FLIGHT INSPECTION/VALIDATION</div> <div>POC: JOHN BORDY, AJV-A33, 405-954-0980</div> <div><div>Digitally signed by ERIC N SUSKI Apr 04, 2025</div><div>QUALITY 9 CHECKED BEGUE</div><div>QUALITY 19 CHECKED</div></div>					

WAAS CH 97416 W25A	APP CRS 252°	Rwy Idg TDZE 643 Apt Elev 643
--	------------------------	---

RNAV (GPS) RWY 25

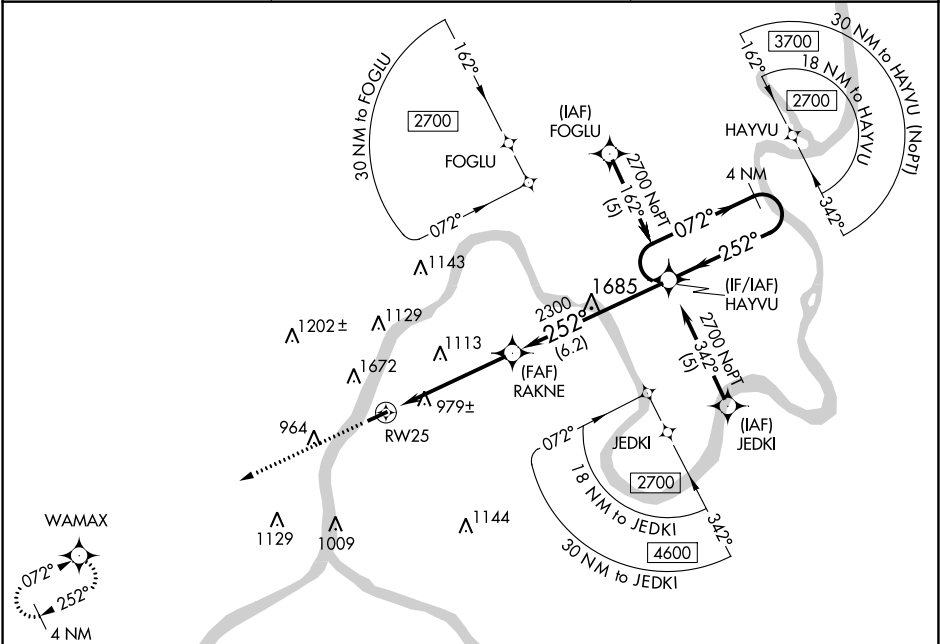
MASON COUNTY (3I2)

RNP APCH - GPS.

Circling NA NW of Rwy 7-25. Baro-VNAV NA when using Athens/Albany, OH altimeter setting. For uncompensated Baro-VNAV systems, LNAV/VNAV NA below -16°C or above 47°C. Rwy 25 helicopter visibility reduction below ¾ SM NA. When local altimeter setting not received, use Athens/Albany, OH altimeter setting and increase all DA 61 feet and all MDA 80 feet; increase LPV all Cats visibility ¼ mile and increase LNAV-VNAV all Cats visibility 1 mile. VDP NA when using Ohio University altimeter setting.

MISSED APPROACH:
Climb to 3200 direct
WAMAX and hold.

AWOS-3 119.675	HUNTINGTON APP CON 128.4 270.1	UNICOM 122.8 (CTAF) 0
--------------------------	--	---------------------------------



ELEV 643

TDZE 643

REIL Rwy 7 and 25 0
MIRL Rwy 7-25 0

3200 WAMAX VGSI and RNAV glidepath angles not coincident (VGSI Angle 3.00/TCH 43). 4 NM Holding Pattern

252° to RW25
0.3% UP
4000 X 75
4000

3.2 NM to RW25
1.8 NM
6.2 NM

252°
2300
2700
GP 3.00°
TCH 54

CATEGORY	A	B	C	D
LPV DA		1430-2¾	787 (800-2¾)	
LNAV/VNAV DA		1727-4	1084 (1100-4)	
LNAV MDA	1700-1¼ 1057 (1100-1¼)	1700-1½ 1057 (1100-1½)	1700-3 1057 (1100-3)	
CIRCLING	1700-1¼ 1057 (1100-1¼)	1700-1½ 1057 (1100-1½)	1700-3 1057 (1100-3)	