

Flight Procedures Cover Page	Task Action: P-NOTAM	Task Type: IAP	Estimated Chart Date: 05/19/2022	APWS Task ID: 87E54A661CD342C2B1EE5BA90C652A06	APWS Project ID: 1DEE18C2472C41A08FF010CDD8AD57A5
Procedure: RNAV (RNP) RWY 19 AMDT 1B		Enroute: NO	Specialist: Combs, Patrick		Agreement Number:
Airport ID: KSEF		Airport City: SEBRING		State: FL	
Facility ID:	Facility Type:	Flight Inspection Remark Type:			
<p>Procedure Comments: P- NOTAM</p> <p>UPDATES NIGHT RESTRICTION AND CHART/PLANVIEW NOTES.</p> <p>PROCESSED IAW TECHNICAL SUPPORT GROUP (AJF-17) MEMO DATED 07/07/2021, SUBJECT: GUIDANCE FOR PROCEDURAL CHANGES REQUIRING FLIGHT INSPECTION/VALIDATION</p> <p>CONTACT JASON KRETSCHMER, AJV-A421, 405-954-4019.</p> <div style="text-align: center; margin-top: 20px;"> <i>Digitally signed by</i> JASON KRETSCHMER Apr 05, 2022 </div>					

QUALITY
24
CHECKED

QUALITY
38
CHECKED

APP CRS
185°

Rwy Idg
5234

TDZE
62

Apt Elev
62

CURRENT

RNAV (RNP) RWY 19

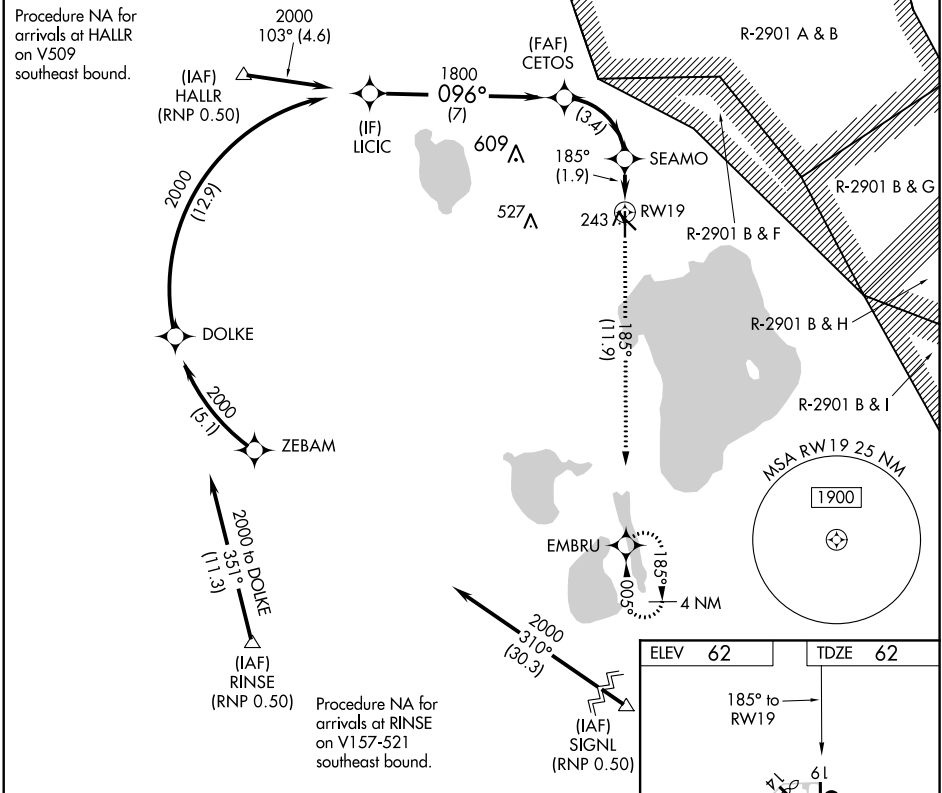
SEBRING RGNL (SEF)

NA

For uncompensated Baro-VNAV systems, procedure NA below -15°C (5°F) or above 54°C (130°F). GPS and RF required. Night landing: Rwy 14, 32 NA.

MISSED APPROACH: Climb to 2000 on track 185° to EMBRU and hold.

AWOS-3 119.475	MIAMI CENTER 134.55 257.7	UNICOM 122.7 (CTAF) 0
--------------------------	-------------------------------------	---------------------------------



LICIC

2000

GP 3.00° TCH 55

CETOS

1800

SEAMO

718

EMBRU

2000

tr 185°

096°

1800

185°

RW19

7 NM

3.4 NM

1.9 NM

CATEGORY	A	B	C	D
RNP 0.30 DA	440-1¼ 378 (400-1¼)			

AUTHORIZATION REQUIRED

MIRL Rwy 1-19 0
REIL Rwys 1 and 19 0