

Flight Procedures Cover Page	Task Action: P-NOTAM	Task Type: IAP	Estimated Chart Date: 10/06/2022	APWS Task ID: 879DEAD41E084A6FA932847C7E15A837	APWS Project ID: 68CE1F8D05B64F7BBDA062C56B41F157
Procedure: RNAV (GPS) RWY 15 AMDT 0B		Enroute: NO	Specialist: Brooks, Charles		Agreement Number:
Airport ID: KBWP			Airport City: WAHPETON		State: ND
Facility ID:	Facility Type:	Flight Inspection Remark Type:			
<div>Procedure Comments: P-NOTAM</div> <div>CIRCLING RADII INCREASE.</div> <div>CONTACT JASON KRETSCHMER, AJV-A421, 405-954-4019</div> <div><div>Digitally signed by JASON KRETSCHMER Aug 22, 2022</div><div>QUALITY 47 CHECKED</div><div>QUALITY 9 CHECKED</div></div>					

WAHPETON, NORTH DAKOTA

AL-6654 (FAA)

20086

APP CRS	Rwy Idg	5100
151°	TDZE	968
	Apt Elev	968

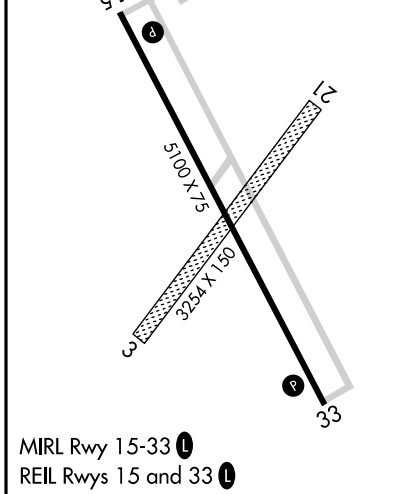
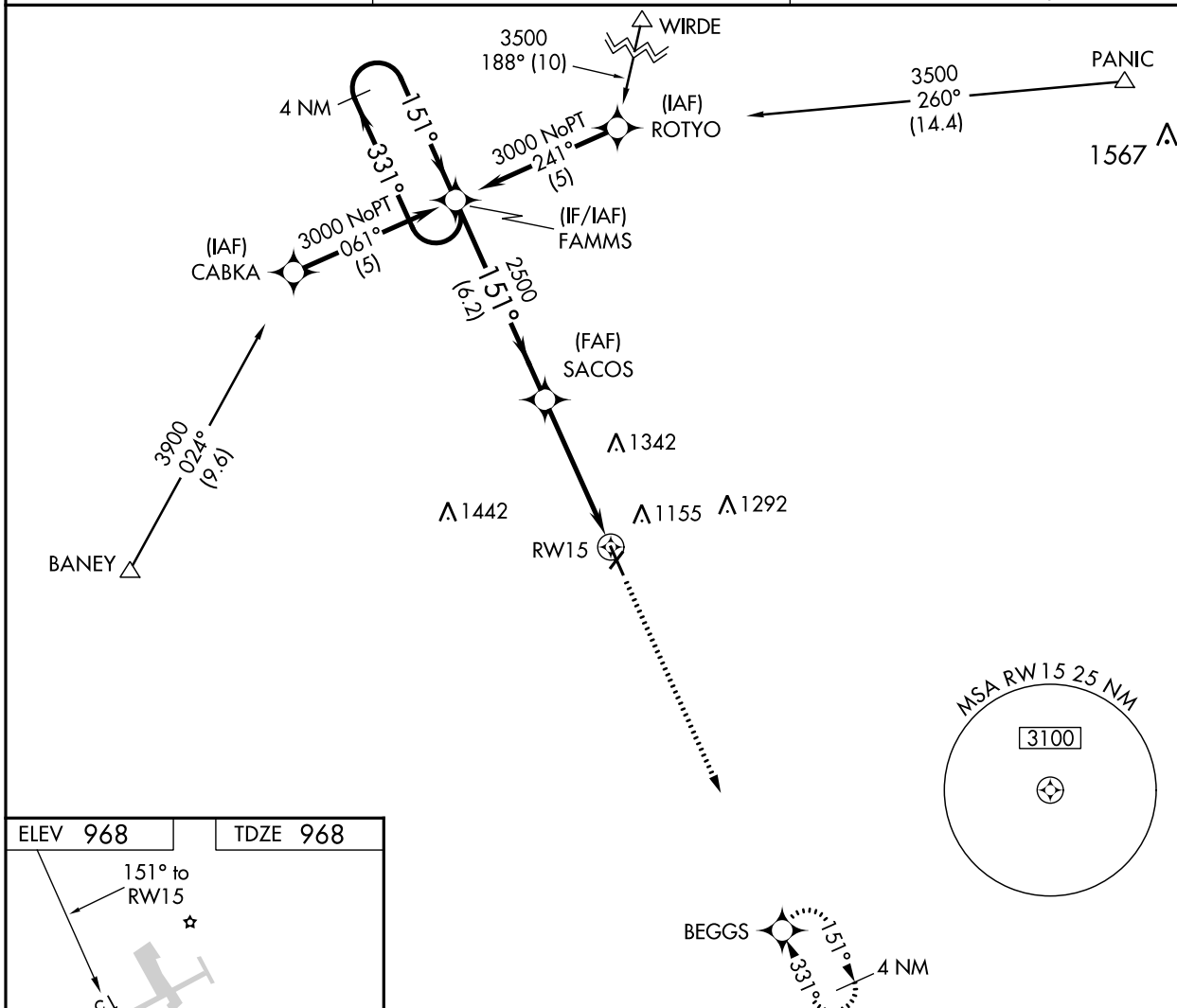
OLD

RNAV (GPS) RWY 15

HARRY STERN (BWP)

<p>NA DME/DME RNP-0.3 NA. Circling to Rwy 3/21 NA at night. If local altimeter setting not received, use Fergus Falls, MN altimeter setting and increase all MDAs 80 feet. VDP NA when using Fergus Falls, MN altimeter setting.</p>	<p>MISSED APPROACH: Climb to 3000 direct BEGGS and hold.</p>
---	--

AWOS-3 127.875	MINNEAPOLIS CENTER 127.35 278.3	UNICOM 123.0 (CTAF) 0
--------------------------	---	---------------------------------



4 NM Holding Pattern	FAMMS	SACOS	3000	BEGGS
3000	331°	151°	151°	331°
VGSI and descent angles not coincident (VGSI Angle 3.00/TCH 42).	151°	2500	1.6 NM to RW15	RW15
6.2 NM	3 NM	1.6 NM		
CATEGORY	A	B	C	D
LNAV MDA	1500-1 532 (600-1)	1500-1½ 532 (600-1½)	1500-1¾ 532 (600-1¾)	1500-2 532 (600-2)
CIRCLING	1520-1 552 (600-1)	1520-1½ 552 (600-1½)	1560-2 592 (600-2)	

WAHPETON, NORTH DAKOTA
Orig-A 16FEB06

46°15'N-96°36'W

HARRY STERN (BWP)
RNAV (GPS) RWY 15

NC-1, 19 MAY 2022 to 16 JUN 2022

NC-1, 19 MAY 2022 to 16 JUN 2022

NM
FT

2

4

6

8

20000

40000

KBWP
HARRY STERN
RNAV GPS RWY 15
ORIG B
1:100,000
CIRCLING
THIS MAP CREATED FOR
CIRCLING ICON
INITIATIVE

Circling CAT C/D TOWER (1342)
38-000675

Circling CAT A/B TOWER (1155)
27-000718

